

GETTING READY FOR 2020

A rundown of scenarios and safety precautions

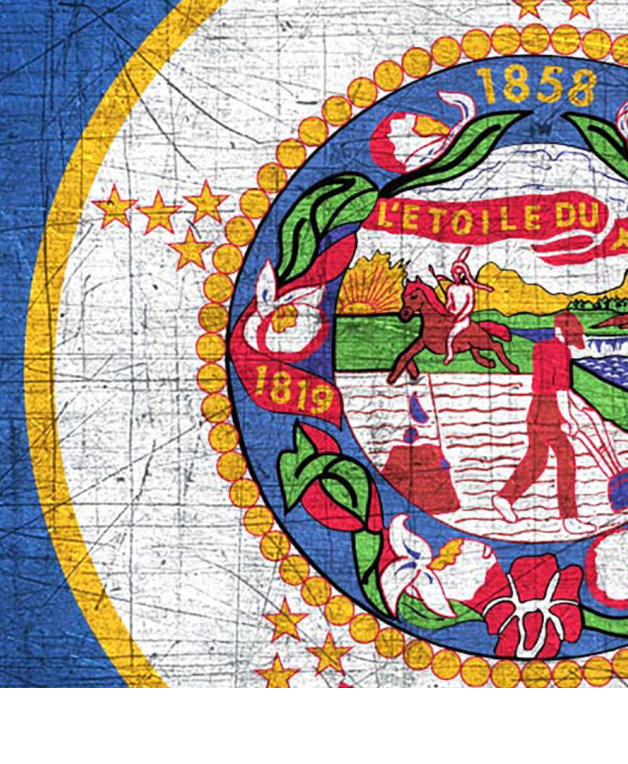


- During distance learning and across the summer of 2020, families and staff had opportunities to participate in multiple surveys and provide feedback.
- Stakeholder feedback shaped district planning for this fall and improvements to distance learning if we must return to that model of education.
- A 70-member team made up of teachers, district staff and school administration worked throughout the summer to plan for this fall. They reviewed social distance and classroom practices, supports for students with special needs, and other considerations in returning to school.

STATE GUIDANCE

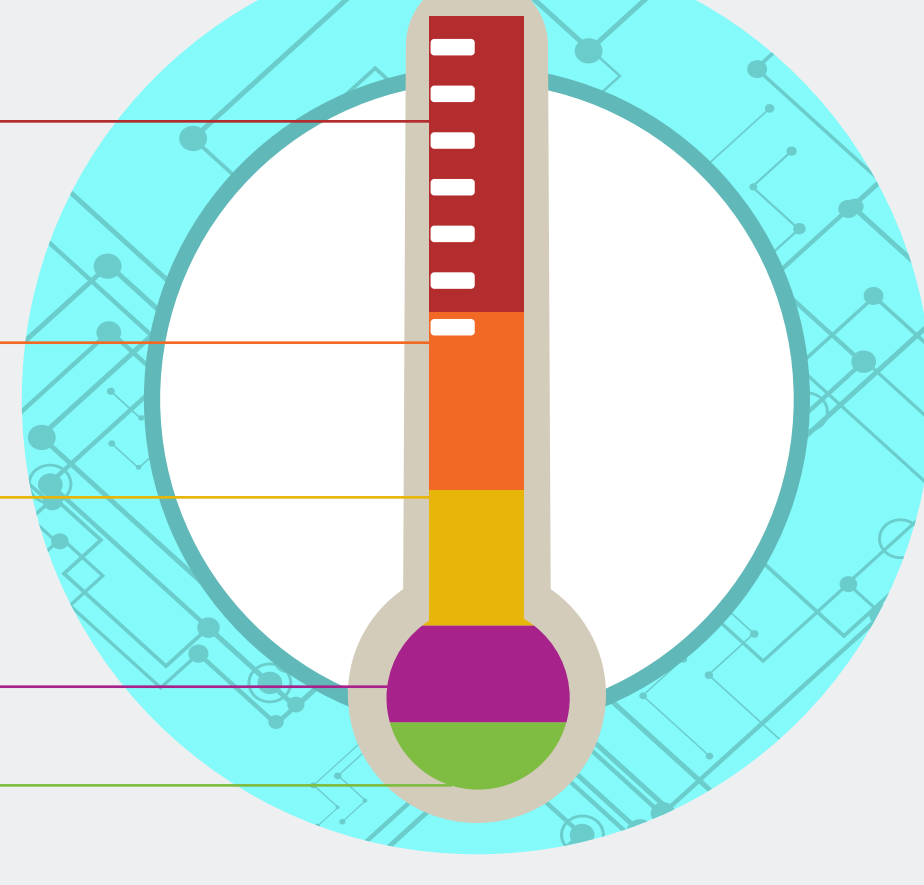


Gov. Tim Walz's Safe Learning Plan requires school districts to use local data about the rate of COVID-19 cases to determine the level of in person instruction.



LEARNING SCENARIOS

- 50+ cases*** | Distance learning for all students
- 30-49 cases** | Hybrid learning for elementary students
Distance learning for secondary students
- 20-29 cases** | Hybrid learning for all students
- 10-19 cases** | In-person learning for elementary students
Hybrid learning for secondary students
- 0-9 cases** | In-person learning for all students



As these data change, schools will change their learning models.

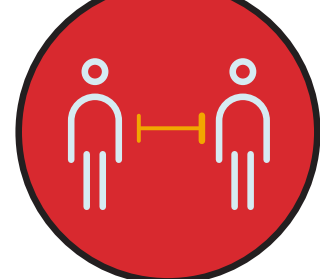
*COVID-19 responses are based on the number of cases per 10,000 over a 14-day average.

IN-PERSON

IN-PERSON LEARNING



- **Face coverings are required**



- **Social distance between students and school staff will be maintained as much as possible**



- **Classrooms of students will be kept together as much as possible**



- **Classroom furniture and layouts will maximize social distance and efficient cleaning**



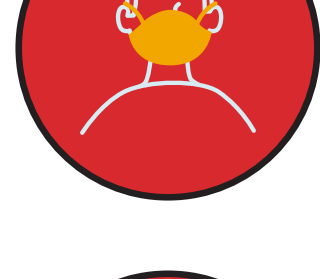
- **Frequent hand washing**

- **Families are encouraged to transport their children to and from school if possible. This will provide more social distance on school buses.**

- **Eagle Zone's fee-based child care is available during before- and after-school hours**

HYBRID

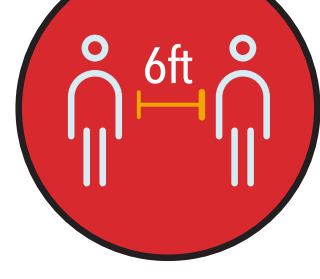
HYBRID LEARNING



- **K-1 students would be in person, Monday through Friday, with appropriate social distance.**



- **Grades 2-12 would attend school in person on an alternating schedule - approximately 50% of students in school at a time.**



- **As much as possible, students in the same family would have the same schedule.**

- **In the hybrid model, all safety plans for in-person learning remain in place.**

- **The hybrid model maximizes social distance.**



Hybrid schedule grades 2-12

Weekly Schedule	M	T	W	TH	F
	A	A	B	B	Virtual Learning



Half of grades 2-12 students (**group A**) learn in person on Monday and Tuesday. The other half of grades 2-12 students (**group B**) learn in person on Wednesday & Thursday. Friday would be a virtual learning day for students in grades 2-12.



- **Virtual learning includes times for synchronous, real-time video conferencing with teachers.**



- **Eagle Zone Child Care would be available for essential workers daily. For everyone else, fee-based child care is available during before- and after-school hours.**

DISTANCE

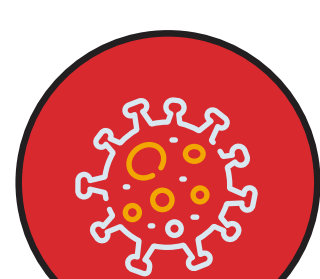
DISTANCE LEARNING



- **Full-time distance learning would be used in order to contain COVID-19 cases.**



- **State guidelines say distance learning could be used for a few days at a school site to contain and trace close contacts if there are a small number of cases.**



- **If there are a large number of cases in a short period of time, at least two weeks of distance learning would be needed to help control spread of COVID-19.**



- **87% of Eden Prairie Schools parents/guardians rated the quality of this spring's distance learning favorably.**

- **School and district leaders collected extensive feedback on how to improve the distance learning experience.**



- **Distance learning will now incorporate more synchronous, real-time lessons between teachers and students.**

- **Eagle Zone Child Care would be available for essential workers daily. For everyone else, fee-based child care is available during before- and after-school hours.**

EP ONLINE



- EP Online is Eden Prairie Schools' 100 percent online learning option available for grades K-12.

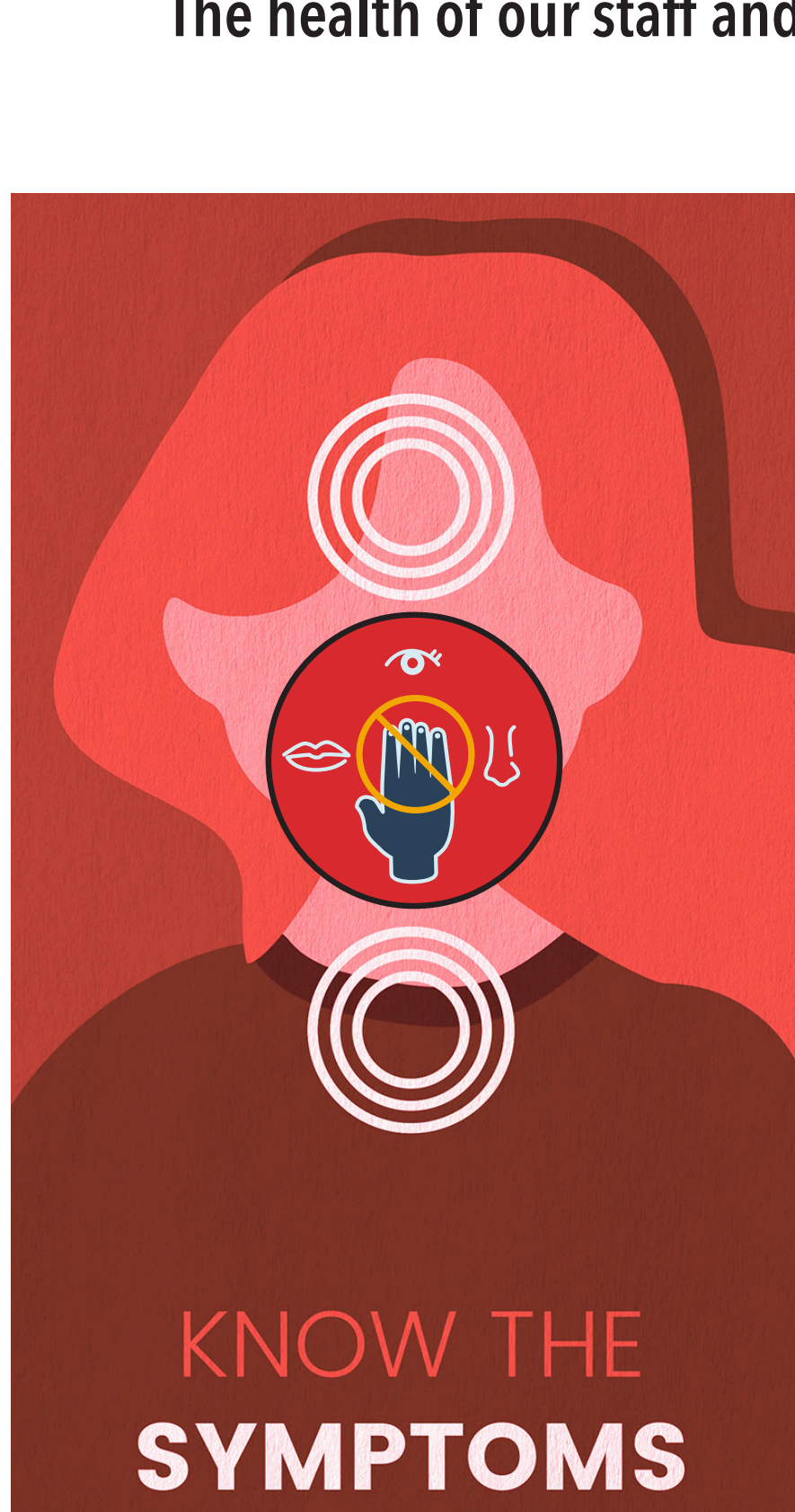
- EP Online will be taught by highly-acclaimed Eden Prairie teachers using a combination of real-time learning through live video conferencing and asynchronous learning.

- Students will experience Eden Prairie Schools' outstanding personalized learning in an online format that follows rigorous academic standards.

www.edenpr.org/ep-online

HEALTH & SAFETY

The health of our staff and students is our top priority as we return to school.



Eden Prairie Schools will provide:

- A reusable fabric face covering for all students and one-time masks as needed
- Face covering options for all staff (mask, gaiter and face shield)
- More time for hand washing and more hand sanitizer stations
- Tools for temperature checks (non-contact thermometers and, at entrances, temperature scanning machines)
- Daily employee health checks
- Training and guidance for employees
- A COVID-19 liaison for each school site and a districtwide coordinator will connect regularly with public health officials
- Response plans if a student or staff member has a confirmed case of COVID-19