



Oak Park Elementary School District 97

2018

MONTHLY CHRONIC ABSENTEEISM ATTENDANCE REPORT

This report provides an overview of student attendance on a monthly basis.

Kristin Imberger
Student Data Coordinator

Oak Park Elementary School District 97

Monthly Chronic Absenteeism Attendance Report

Monthly Attendance

The purpose of this report is to provide a monthly overview of student attendance. Charts and graphs represent the percentage of students within the chart's demographic who are at a 90% attendance rate or higher on a monthly basis.

If a student is absent 10% or more of school days of the most recent academic school year, including absences with and without valid cause and out of school suspensions, then they are identified as a chronic absentee based on the guidelines from the Illinois School Code ([105 ILCS 5/26-18](#))

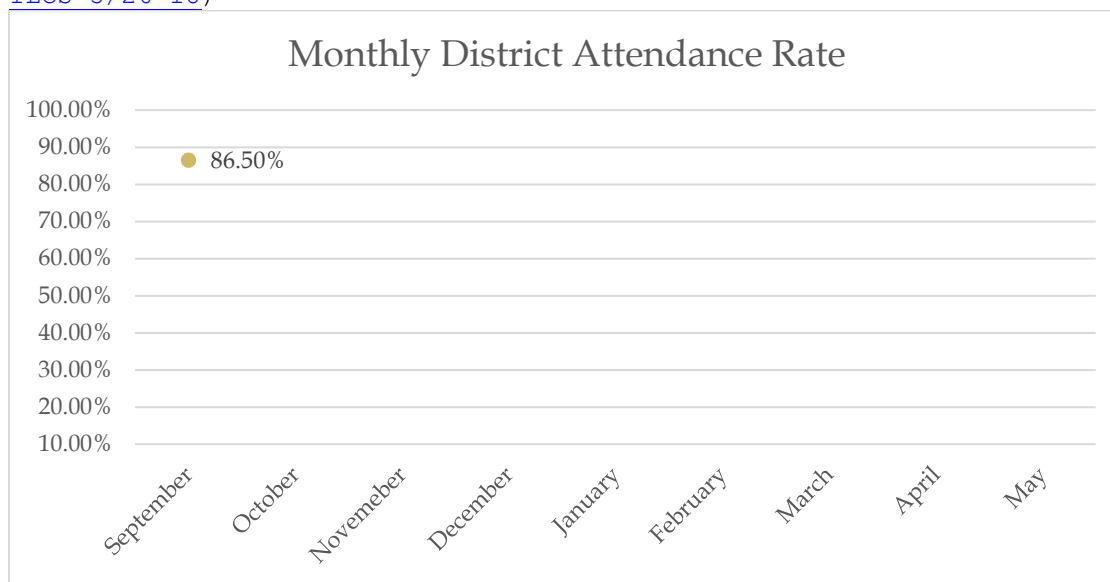


Figure 1: Percentage of students whose attendance rates are 90% or higher.

Grade	Total # of Instructional Minutes ⁱ	Full Day Credit	½ Day Credit	Zero Credit
K – 1	240	240+	120 – 239	119 or less
2 – 12	300	300+	150 – 299	149 or less

**The percentages reflected in this report are the percentage of students with 90% attendance or higher for September 1 – September 27, 2018.*

Report Month: September

Reported enrollment as of 9/27/2018: 6209

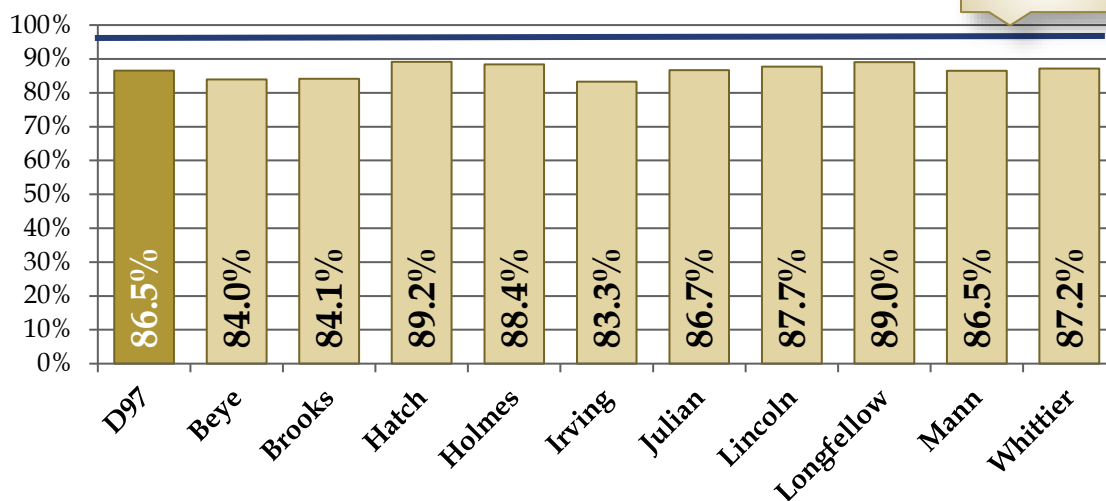
**PKP, students in Special Placement and Homeschooled students are excluded from this number*

Oak Park Elementary School District 97

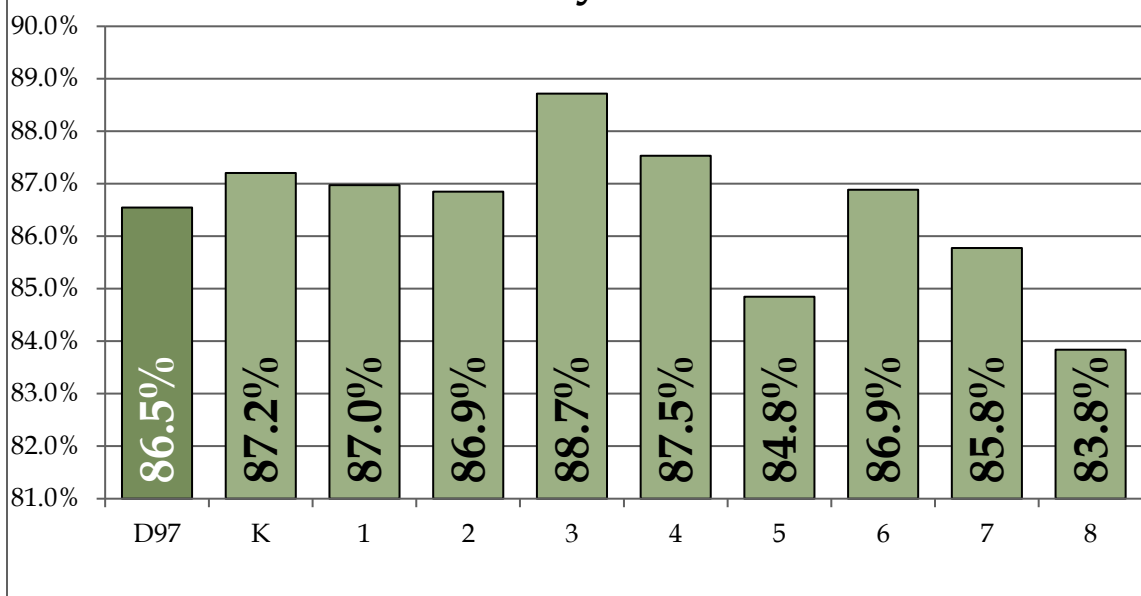
Monthly Chronic Absenteeism Attendance Report

Student Attendance by School

Excellence
Target
98%



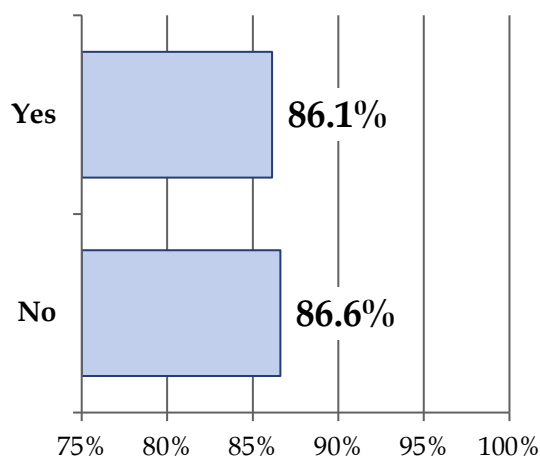
Attendance by Grade Level



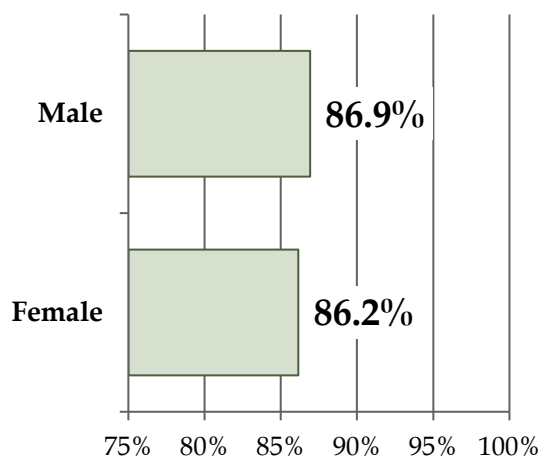
Oak Park Elementary School District 97

Monthly Chronic Absenteeism Attendance Report

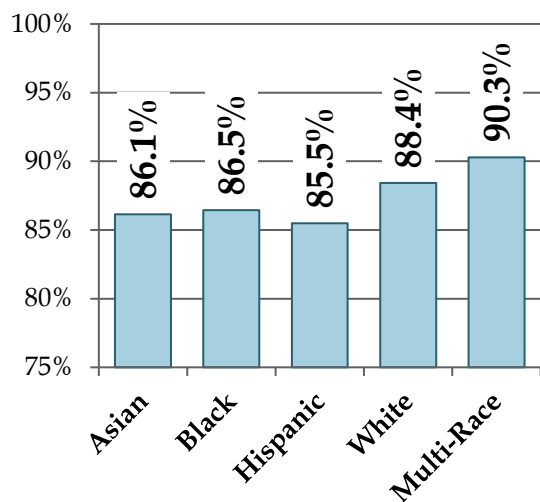
IEP Status



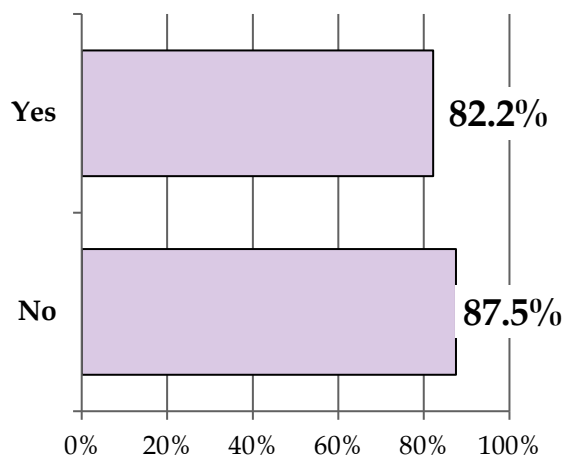
Gender



Race



Low Income



Oak Park Elementary School District 97

Monthly Chronic Absenteeism Attendance Report

Month	Number of Instructional Days	Total # of days a student must be present to achieve 90% or more monthly attendance rate
August	8	7.2
September	19	17.1
October	21	18.9
November	18	16.2
December	15	13.5
January	17	15.3
February	18	16.2
March	16	14.4
April	20	18
May	22	19.8
June	2	1.8

Attendance

District 97's elementary schools utilize the Illinois best practice "Time to Day" automated calculation when taking daily attendance. Per the chart on page 2, Illinois School Code ties attendance to instructional minutes per grade level. The state's requirement for instructional minutes may mean that a child arriving very late or leaving very early from school will be counted as absent. The "Time to Day" calculation simplifies this process by allowing the school to enter the time of day students arrive late or leave early to automatically calculate their attendance for that day. The district's middle schools do not utilize this calculation because they take attendance each class period.