

*Denton
Independent
School
District*



Quarterly
Report
2Q19

*Learn from Yesterday...
Understand Today...
Plan for Tomorrow*



TEMPLETON
DEMOGRAPHICS



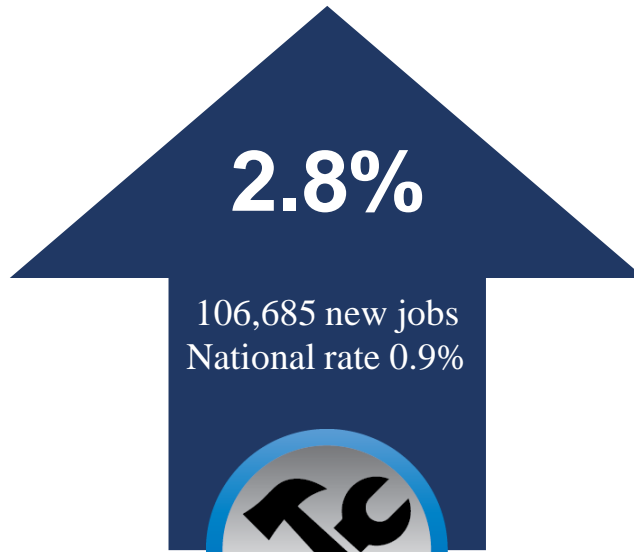
Economic Conditions – DFW Area (June 2019)

Unemployment Rate



U.S. 3.8%
 Texas 3.6%
 DFW MSA 3.3%
 Denton 3.0%

-0.6%



Job Growth

Annual Home Starts



1,979 fewer starts than 2Q18

33,285





DFW New Home Ranking Report

ISD Ranked by Annual Closings – 2Q19

Rank	District Name	Annual Starts	Annual Closings	VDL	Future
1	Prosper ISD	2,417	2,666	4,055	21,880
2	Denton ISD**	2,237	2,164	4,711	36,742*
3	Frisco ISD	2,203	2,063	4,073	5,053
4	Northwest ISD	1,863	1,832	2,631	22,007
5	Dallas ISD	1,673	1,563	2,068	5,975
6	Eagle Mt.-Saginaw ISD	1,600	1,509	1,847	20,502
7	Little Elm ISD	1,238	1,358	1,140	2,469
8	Lewisville ISD	1,235	1,202	1,941	3,285
9	Forney ISD	1,163	1,093	2,063	14,630
10	Crowley ISD	925	907	1,386	15,701
11	Rockwall ISD	739	873	2,026	9,550
12	Mansfield ISD	922	862	1,094	7,542
13	Wylie ISD	655	807	920	3,868
14	McKinney ISD	748	753	2,089	8,121
15	Princeton ISD	665	719	446	8,280
16	Royse City ISD	770	706	1,155	10,171
17	Allen ISD	651	655	1,222	809
18	Melissa ISD	627	649	742	5,831
19	Midlothian ISD	543	630	1,375	19,268
20	Waxahachie ISD	576	594	898	20,600

*Based on additional Templeton Demographics housing research

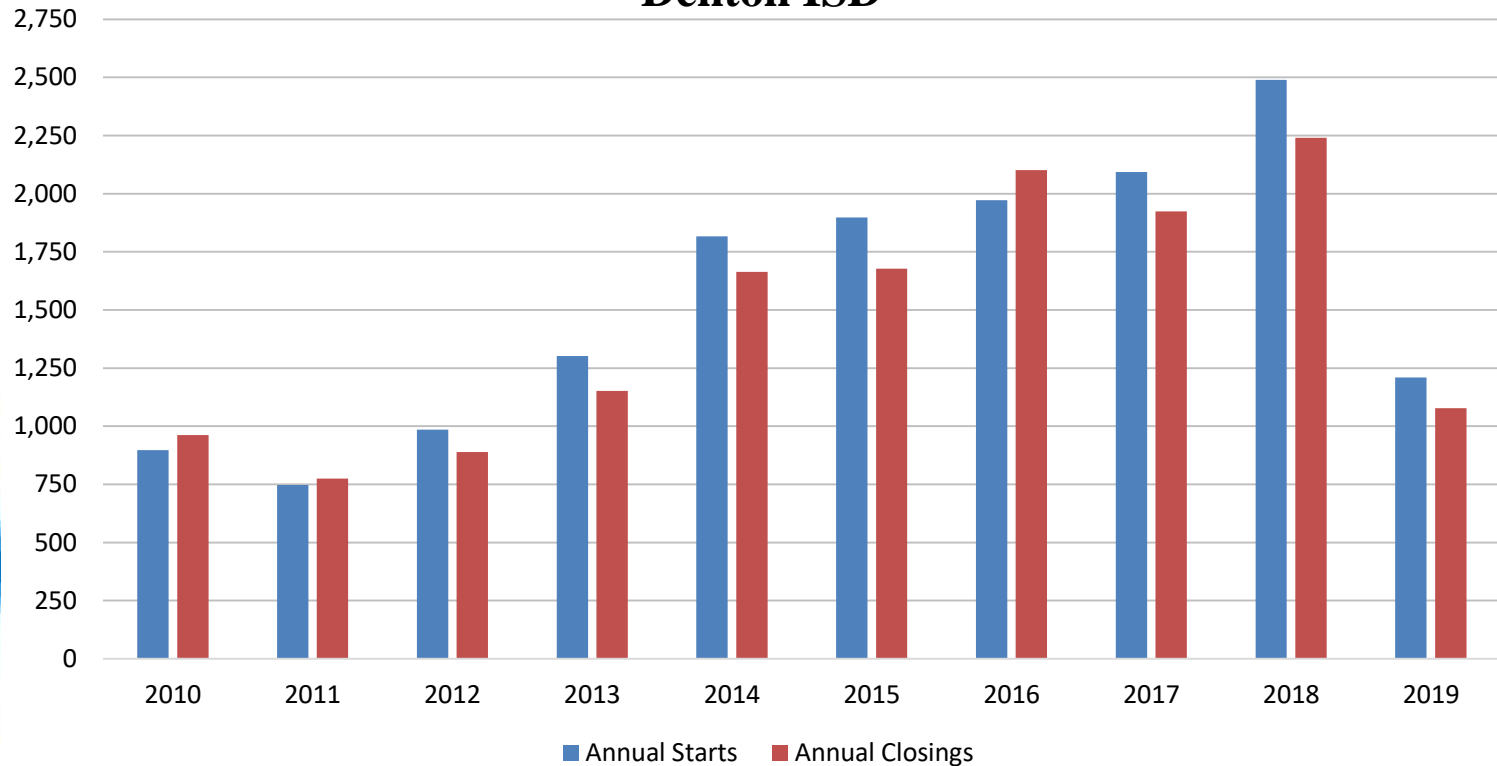
Table **DOES include age restricted communities





New Housing Activity

Denton ISD



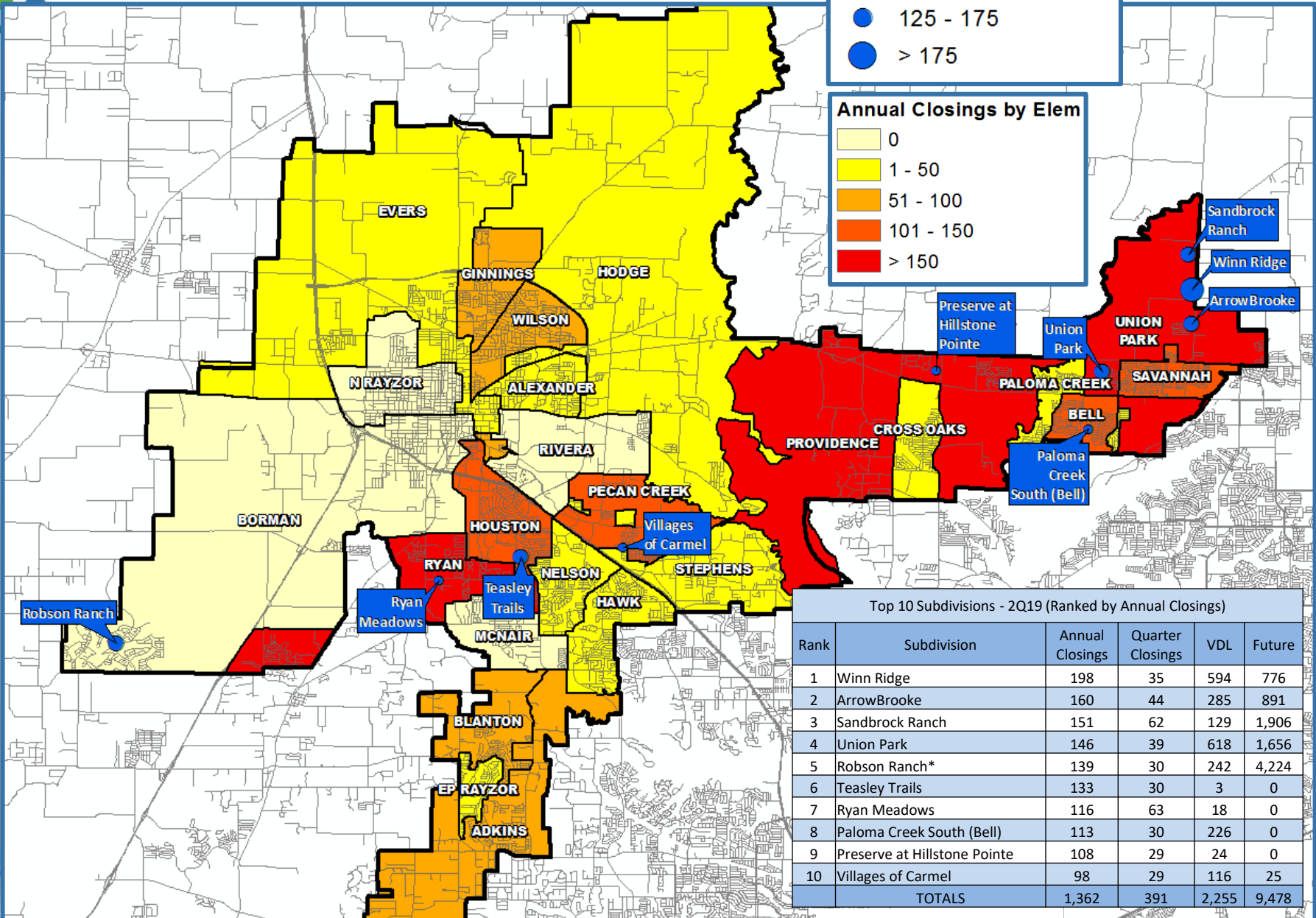
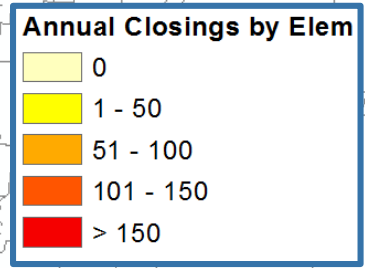
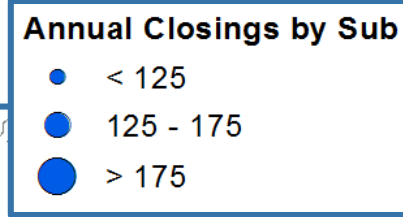
Starts	2014	2015	2016	2017	2018	2019
1Q	434	335	532	447	555	572
2Q	466	451	480	536	801	638
3Q	457	607	543	608	563	
4Q	459	505	417	502	571	
Total	1,816	1,898	1,972	2,093	2,490	1,210

Closings	2014	2015	2016	2017	2018	2019
1Q	315	340	461	436	561	495
2Q	383	474	556	450	563	583
3Q	531	450	544	559	561	
4Q	435	413	541	479	555	
Total	1,664	1,677	2,102	1,924	2,240	1,078

- Within the district there were more than 630 new home starts in 2Q19, the second highest quarter starts in more than 12 years
- The district had the most closings in a single quarter in more than 12 years



Annual Closing Distribution



Top 10 Subdivisions - 2Q19 (Ranked by Annual Closings)

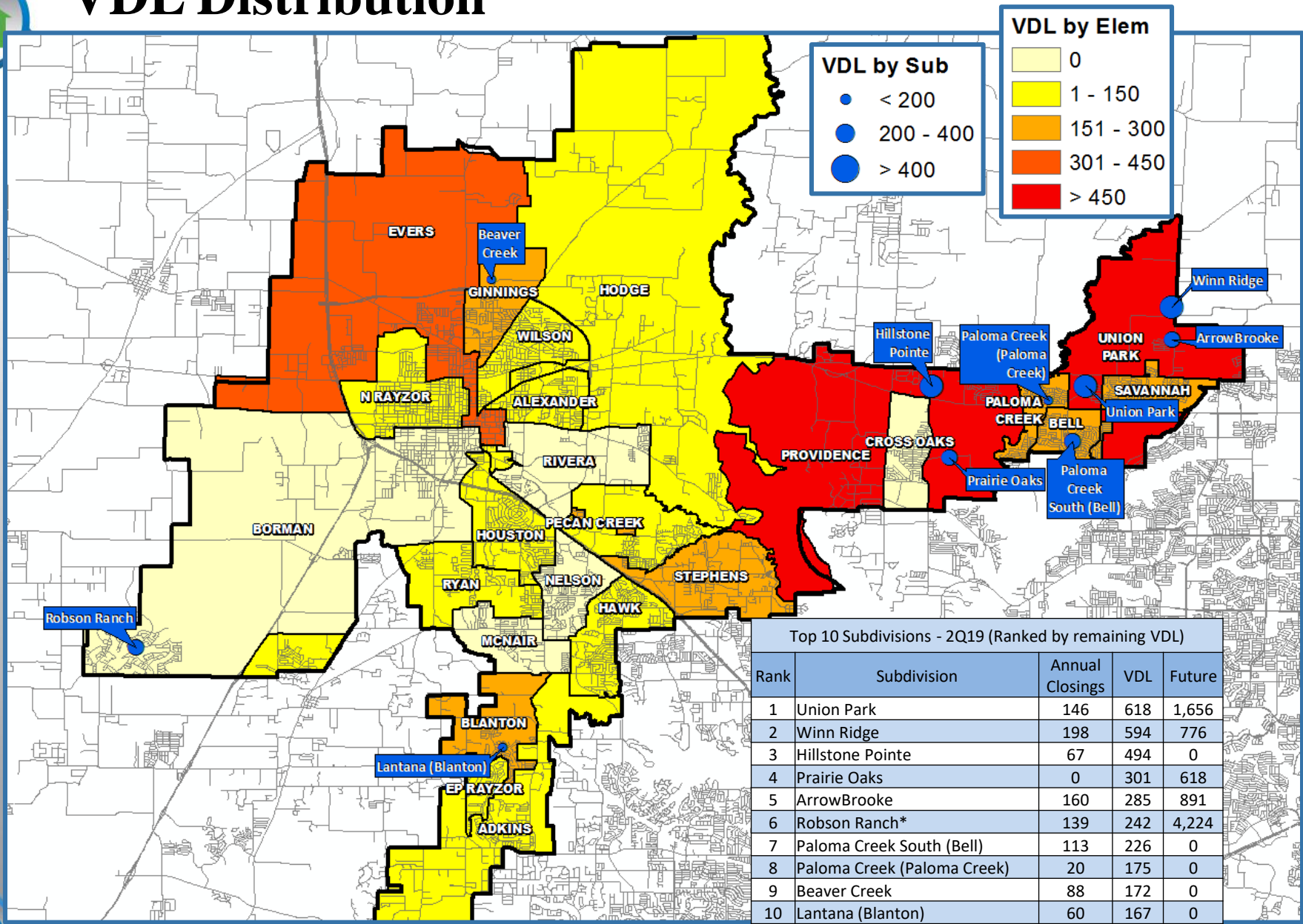
Rank	Subdivision	Annual Closings	Quarter Closings	VDL	Future
1	Winn Ridge	198	35	594	776
2	ArrowBrooke	160	44	285	891
3	Sandbrock Ranch	151	62	129	1,906
4	Union Park	146	39	618	1,656
5	Robson Ranch*	139	30	242	4,224
6	Teasley Trails	133	30	3	0
7	Ryan Meadows	116	63	18	0
8	Paloma Creek South (Bell)	113	30	226	0
9	Preserve at Hillstone Pointe	108	29	24	0
10	Villages of Carmel	98	29	116	25
TOTALS		1,362	391	2,255	9,478

*Age Restricted Community





VDL Distribution



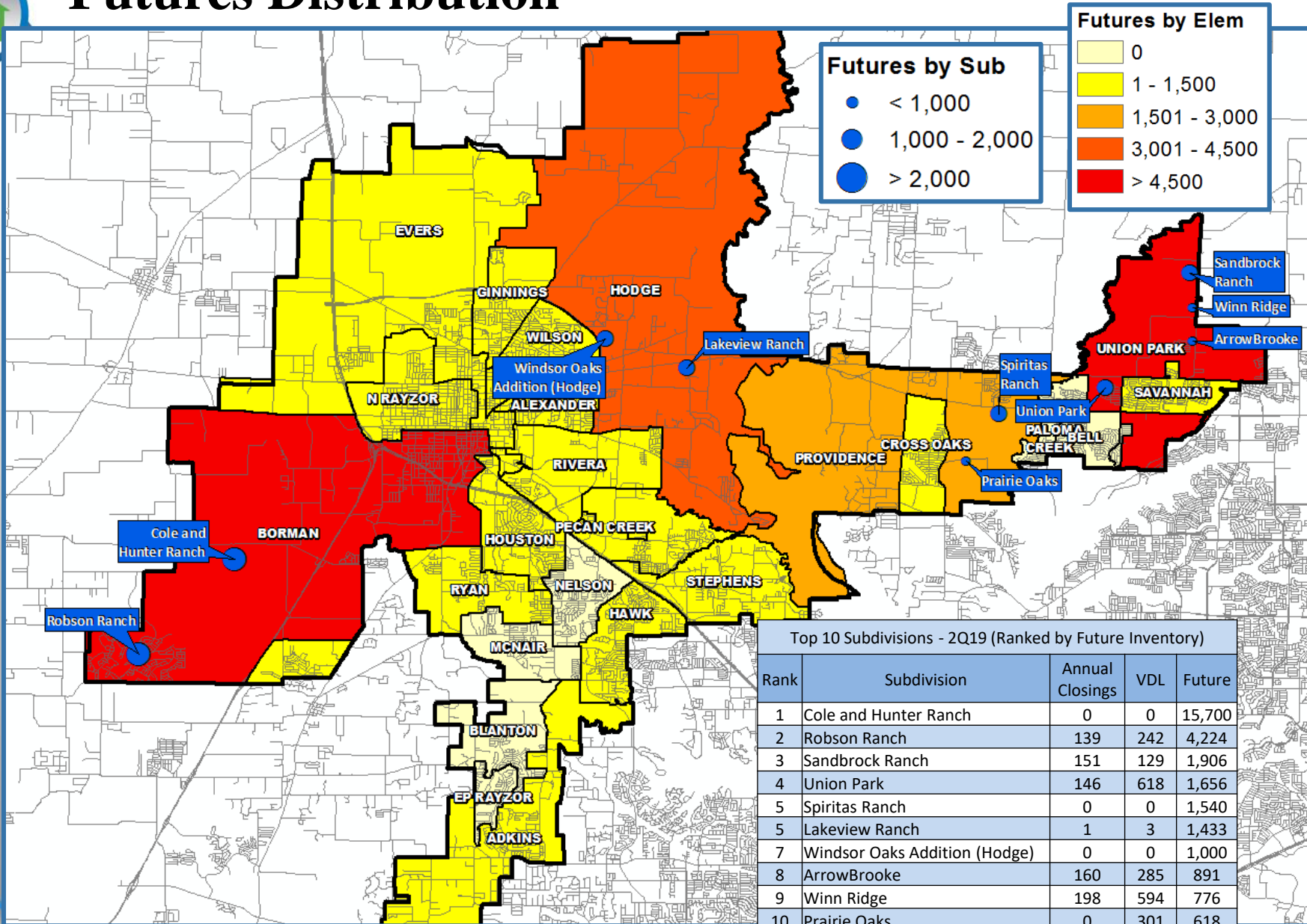
Top 10 Subdivisions - 2Q19 (Ranked by remaining VDL)

Rank	Subdivision	Annual Closings	VDL	Future
1	Union Park	146	618	1,656
2	Winn Ridge	198	594	776
3	Hillstone Pointe	67	494	0
4	Prairie Oaks	0	301	618
5	ArrowBrooke	160	285	891
6	Robson Ranch*	139	242	4,224
7	Paloma Creek South (Bell)	113	226	0
8	Paloma Creek (Paloma Creek)	20	175	0
9	Beaver Creek	88	172	0
10	Lantana (Blanton)	60	167	0
TOTALS		991	3,274	8,165



*Age Restricted Community

Futures Distribution



Top 10 Subdivisions - 2Q19 (Ranked by Future Inventory)

Rank	Subdivision	Annual Closings	VDL	Future
1	Cole and Hunter Ranch	0	0	15,700
2	Robson Ranch	139	242	4,224
3	Sandbrock Ranch	151	129	1,906
4	Union Park	146	618	1,656
5	Spiritas Ranch	0	0	1,540
5	Lakeview Ranch	1	3	1,433
7	Windsor Oaks Addition (Hodge)	0	0	1,000
8	ArrowBrooke	160	285	891
9	Winn Ridge	198	594	776
10	Prairie Oaks	0	301	618
TOTALS		795	2,172	29,234

*Age Restricted Community



New Home Activity by Elementary Zone

Elementary	Annual Starts	Quarter Starts	Annual Closings	Quarter Closings	Under Construction	Inventory	Vacant Dev. Lots	Future
ADKINS	58	20	80	20	29	43	72	84
ALEXANDER	5	1	24	8	1	10	30	477
BELL	86	11	113	30	15	34	226	0
BLANTON	73	29	67	14	31	47	170	0
BORMAN	0	0	0	0	0	0	0	15,860
CROSS OAKS	0	0	2	0	0	0	0	439
EP RAYZOR	5	1	9	3	2	2	3	0
EVERS	122	88	20	1	108	112	328	1,199
GINNINGS	68	45	88	16	15	27	184	616
HAWK	7	0	13	4	0	2	2	169
HODGE	6	6	15	7	6	7	27	3,464
HOUSTON	66	10	133	30	30	40	3	20
MCNAIR	0	0	0	0	0	0	0	0
N RAYZOR	0	0	0	0	1	1	6	150
NELSON	2	0	4	0	0	0	0	0
PALOMA CREEK	41	7	20	11	10	23	175	0
PECAN CREEK	116	45	107	30	49	62	124	435
PROVIDENCE	168	66	190	51	62	124	884	2,491
RIVERA	0	0	0	0	0	0	0	342
RYAN	202	15	215	78	32	59	125	565
SAVANNAH	102	22	113	34	29	76	156	16
STEPHENS	55	14	45	12	26	37	159	98
UNION PARK	846	220	668	187	289	503	1,685	5,933
WILSON	86	14	99	17	42	57	110	53
GRAND TOTAL*	2,114	614	2,025	553	777	1,266	4,469	32,411

*Table does NOT include age restricted communities

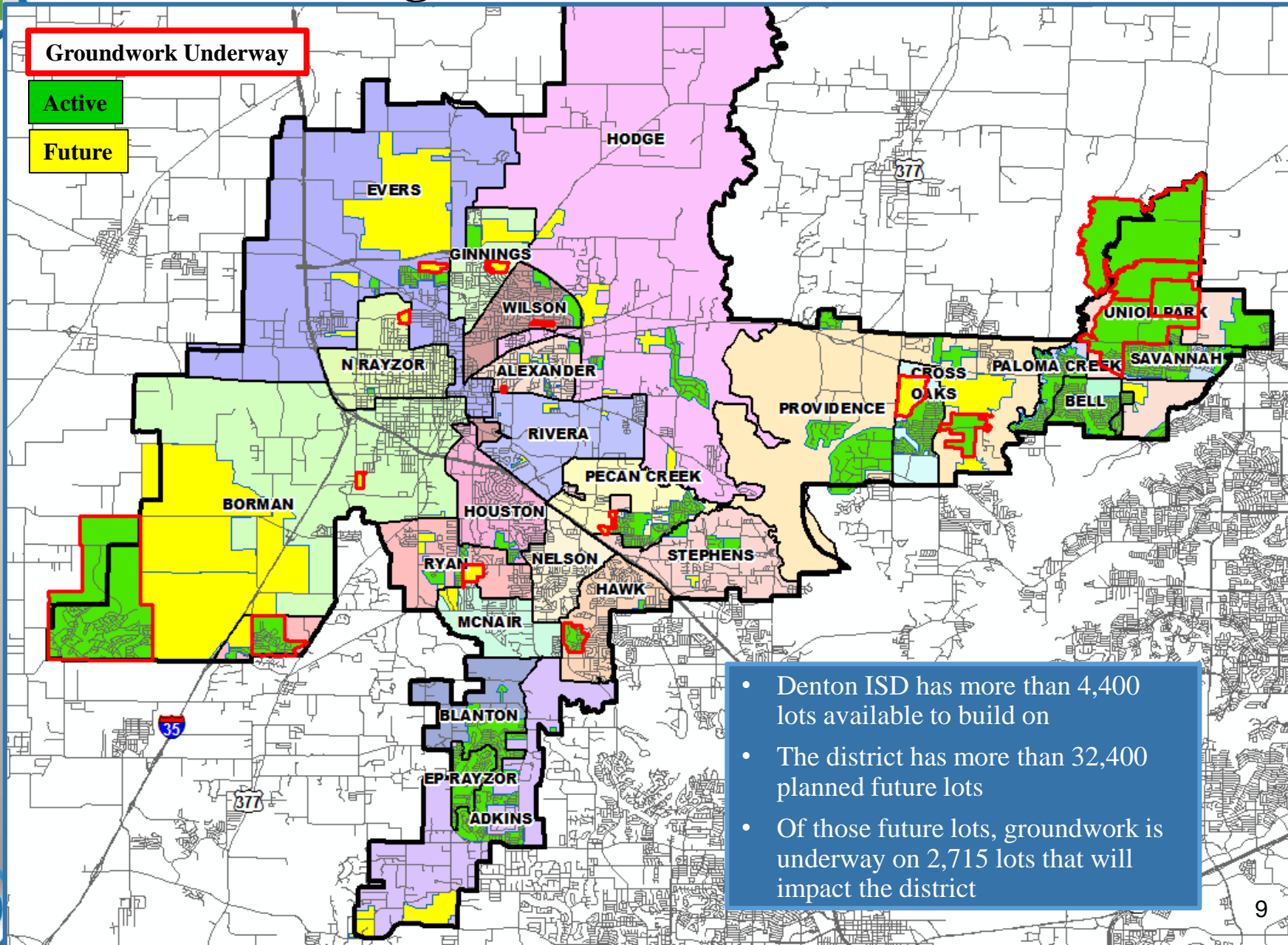
Highest activity in the category

Second highest activity in the category

Third highest activity in the category



District Housing Overview

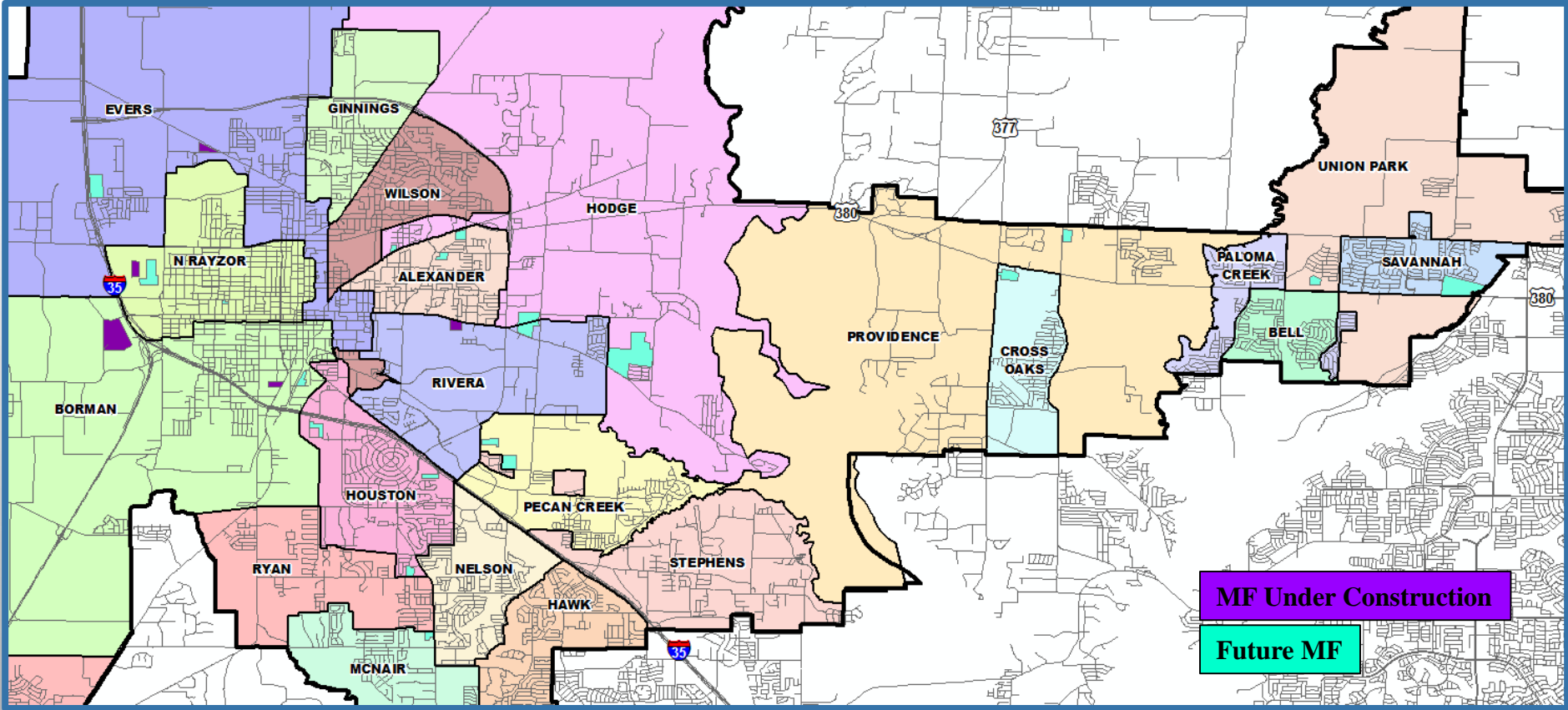


- Denton ISD has more than 4,400 lots available to build on
- The district has more than 32,400 planned future lots
- Of those future lots, groundwork is underway on 2,715 lots that will impact the district





District Multi-Family Overview



- Denton ISD has more roughly 1,190 multi-family units under construction
- Of those, 289 units are in student housing developments
- There are more than 4,450 planned multi-family units in various stages of development, including 384 tax-credit units

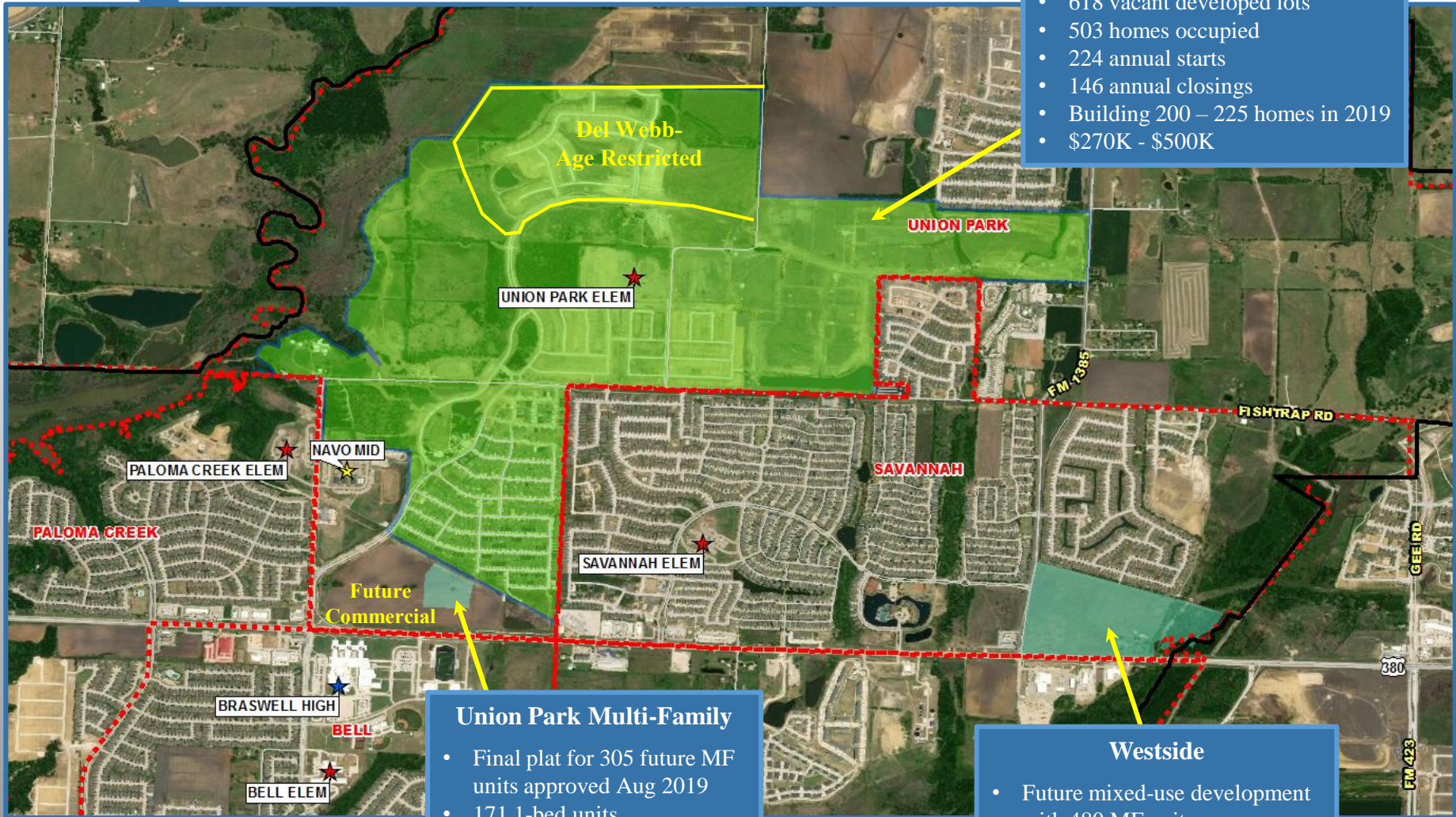




Residential Activity

Union Park

- 2,948 total lots that will impact district enrollment
- 1,656 future lots
- 618 vacant developed lots
- 503 homes occupied
- 224 annual starts
- 146 annual closings
- Building 200 – 225 homes in 2019
- \$270K - \$500K



Union Park Multi-Family

- Final plat for 305 future MF units approved Aug 2019
- 171 1-bed units
- 124 2-bed units
- 10 3-bed units
- Market rate complex

Westside

- Future mixed-use development with 480 MF units
- Phase 1 with 243 units site plan under review





Residential Activity



Spiritas Ranch

- 2,530 total residential units proposed
- 480 future multi-family units
- 510 future townhomes
- 1,540 future single family lots
- Preliminary plat approved for 1,030 SF lots on 306 acres Jan 2019

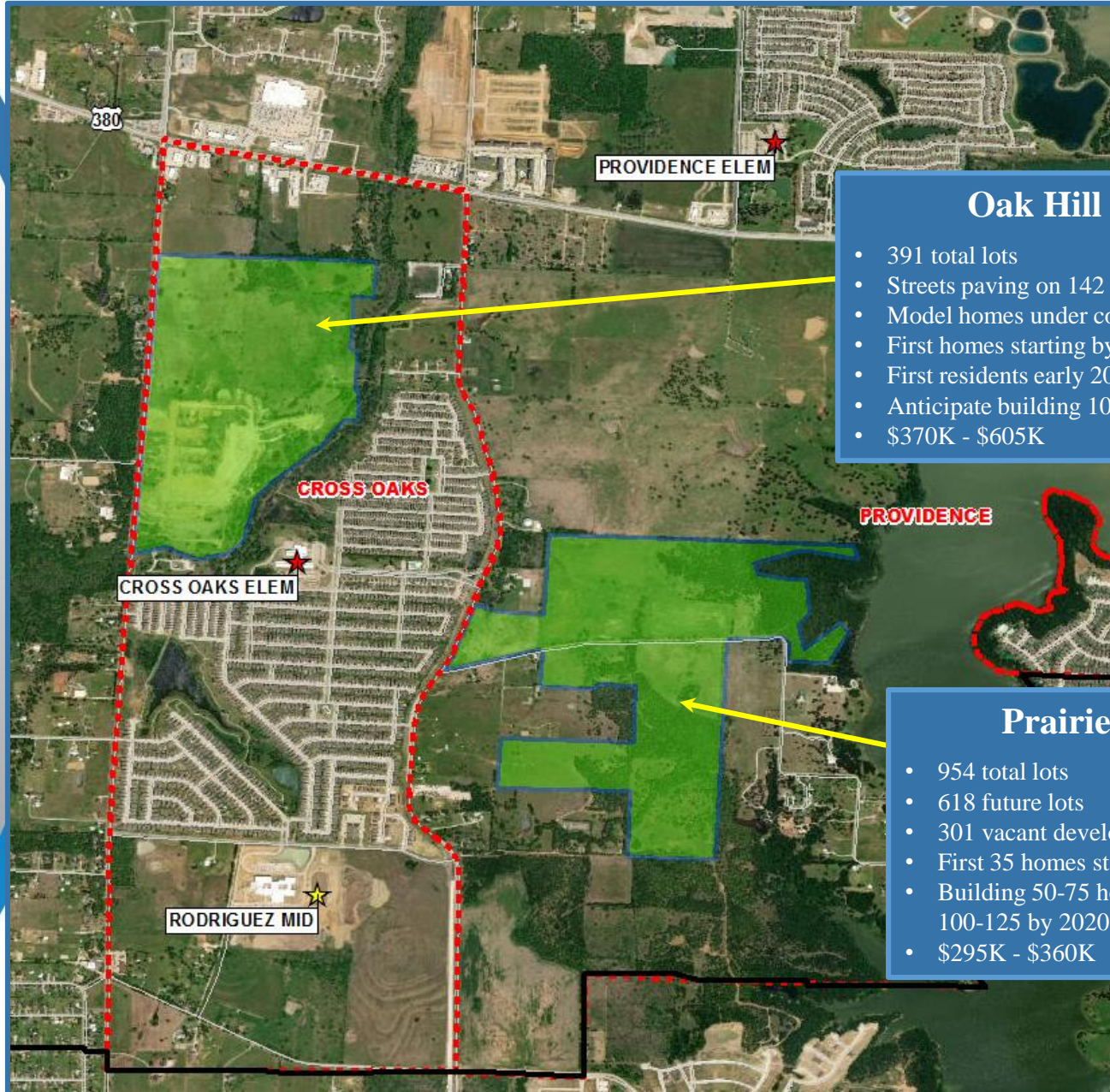
Spiritas Ranch East

- Preliminary plat for 386 SF lots on 96 acres approved Feb 2019





Residential Activity



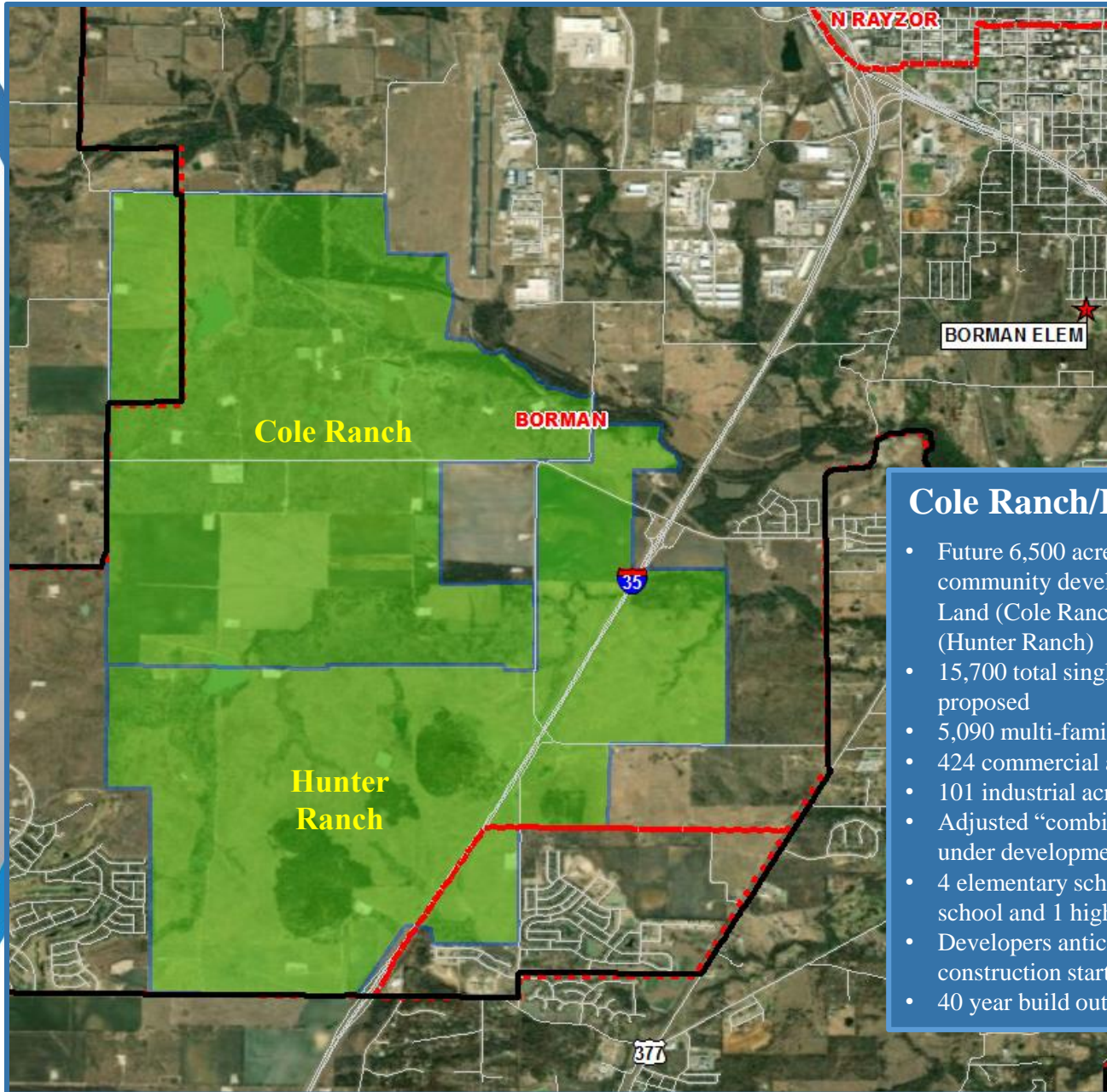
Oak Hill Ranch

- 391 total lots
- Streets paving on 142 lots in Phase 1
- Model homes under construction
- First homes starting by mid September
- First residents early 2020
- Anticipate building 100-125 homes in 2020
- \$370K - \$605K

Prairie Oaks

- 954 total lots
- 618 future lots
- 301 vacant developed lots
- First 35 homes started in 2Q19
- Building 50-75 homes in 2019 and 100-125 by 2020
- \$295K - \$360K

Residential Activity



Cole Ranch/Hunter Ranch

- Future 6,500 acre master planned community developed by Stratford Land (Cole Ranch) and Hillwood (Hunter Ranch)
- 15,700 total single family lots proposed
- 5,090 multi-family units
- 424 commercial acres
- 101 industrial acres
- Adjusted “combined” master plan under development summer 2019
- 4 elementary school sites, 1 middle school and 1 high school
- Developers anticipate home construction starting 2023
- 40 year build out





Ten Year Forecast

By Grade Level

Year (Oct.)	EE/PRE-K	K	1st	2nd	3rd	4th	5th	6th	7th	8th	9th	10th	11th	12th	Total	Total Growth	Percent
2014/15	1,063	2,068	2,099	2,178	2,166	2,082	2,133	2,075	2,052	1,973	2,042	1,873	1,665	1,551	27,020		
2015/16	1,143	1,954	2,143	2,088	2,190	2,152	2,115	2,154	2,128	2,094	2,091	1,985	1,756	1,566	27,559	539	2.0%
2016/17	1,128	2,066	2,044	2,194	2,181	2,231	2,219	2,159	2,202	2,175	2,293	2,084	1,967	1,685	28,628	1,069	3.9%
2017/18	1,141	2,081	2,100	2,119	2,230	2,251	2,300	2,264	2,232	2,205	2,346	2,245	2,018	1,887	29,419	791	2.8%
2018/19	1,147	2,145	2,117	2,168	2,134	2,277	2,291	2,331	2,327	2,306	2,398	2,302	2,199	1,973	30,115	696	2.4%
2019/20	1,147	2,184	2,232	2,193	2,248	2,200	2,347	2,329	2,398	2,394	2,484	2,348	2,204	2,150	30,858	743	2.5%
2020/21	1,147	2,353	2,286	2,316	2,232	2,316	2,254	2,391	2,379	2,434	2,607	2,424	2,246	2,152	31,537	679	2.2%
2021/22	1,147	2,426	2,455	2,387	2,359	2,306	2,392	2,295	2,462	2,423	2,667	2,554	2,326	2,186	32,385	848	2.7%
2022/23	1,147	2,504	2,506	2,545	2,432	2,436	2,366	2,438	2,330	2,518	2,572	2,609	2,448	2,277	33,128	743	2.3%
2023/24	1,147	2,614	2,594	2,608	2,627	2,496	2,511	2,418	2,478	2,364	2,707	2,513	2,499	2,389	33,965	837	2.5%
2024/25	1,147	2,671	2,698	2,682	2,663	2,695	2,567	2,561	2,465	2,536	2,539	2,643	2,408	2,438	34,713	748	2.2%
2025/26	1,147	2,712	2,729	2,743	2,737	2,725	2,745	2,628	2,598	2,520	2,718	2,471	2,532	2,353	35,358	645	1.9%
2026/27	1,147	2,733	2,799	2,798	2,802	2,795	2,786	2,817	2,673	2,650	2,710	2,660	2,368	2,470	36,208	850	2.4%
2027/28	1,147	2,792	2,818	2,853	2,833	2,865	2,860	2,853	2,868	2,728	2,837	2,622	2,547	2,313	36,936	728	2.0%
2028/29	1,147	2,750	2,868	2,890	2,910	2,908	2,948	2,933	2,901	2,929	2,927	2,763	2,511	2,486	37,871	935	2.5%

*Yellow box = largest grade per year

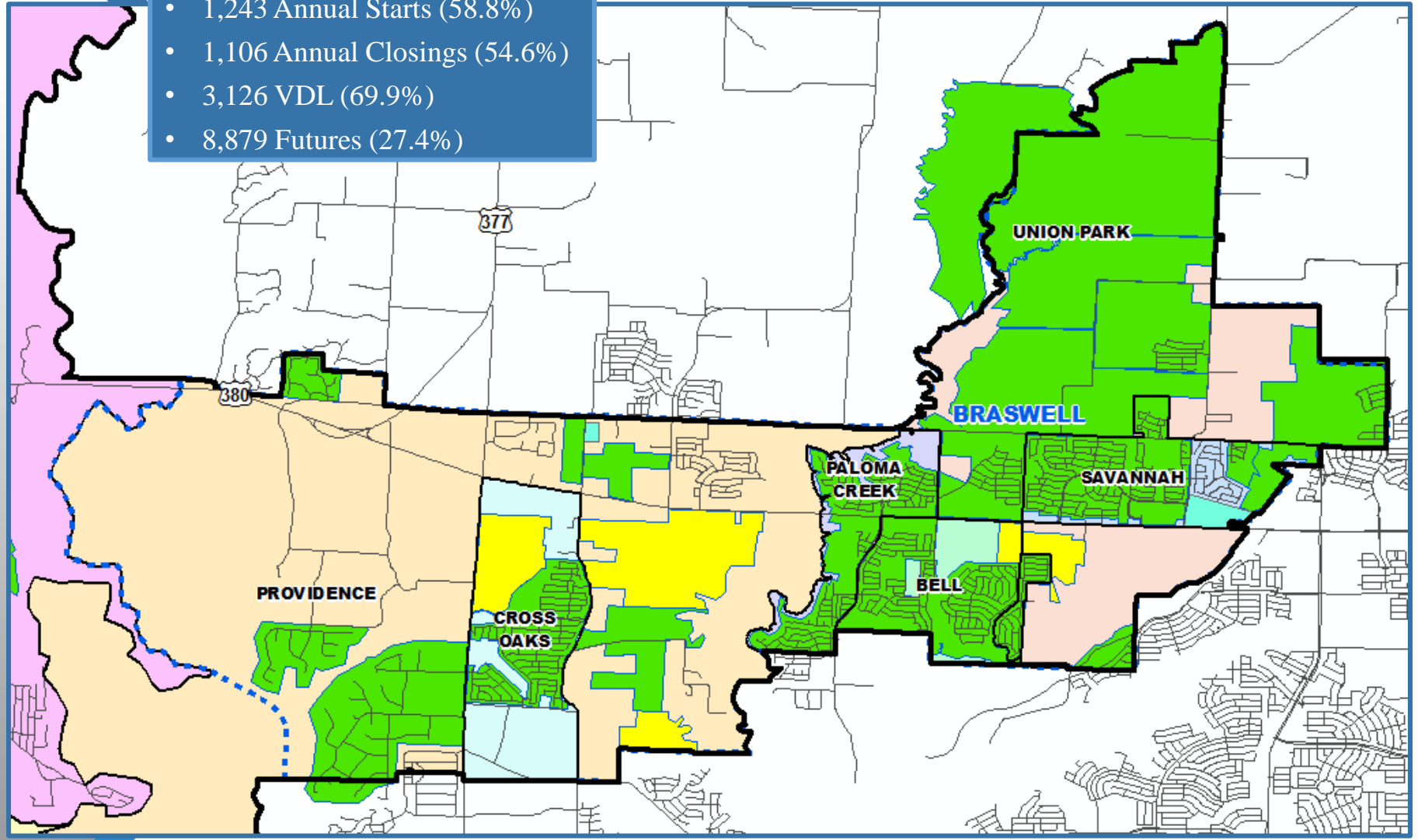
*Green box = second largest grade per year

- Denton ISD will enroll more than 31,000 students by 2020
- 5 year growth = 3,850 students
- 2023/24 enrollment = 33,965 students
- 10 year growth = 7,756 students
- 2028/29 enrollment = 37,871 students



Braswell High School Zone

- 1,243 Annual Starts (58.8%)
- 1,106 Annual Closings (54.6%)
- 3,126 VDL (69.9%)
- 8,879 Futures (27.4%)



Vertical Zones- Ten Year Forecast

Braswell High School

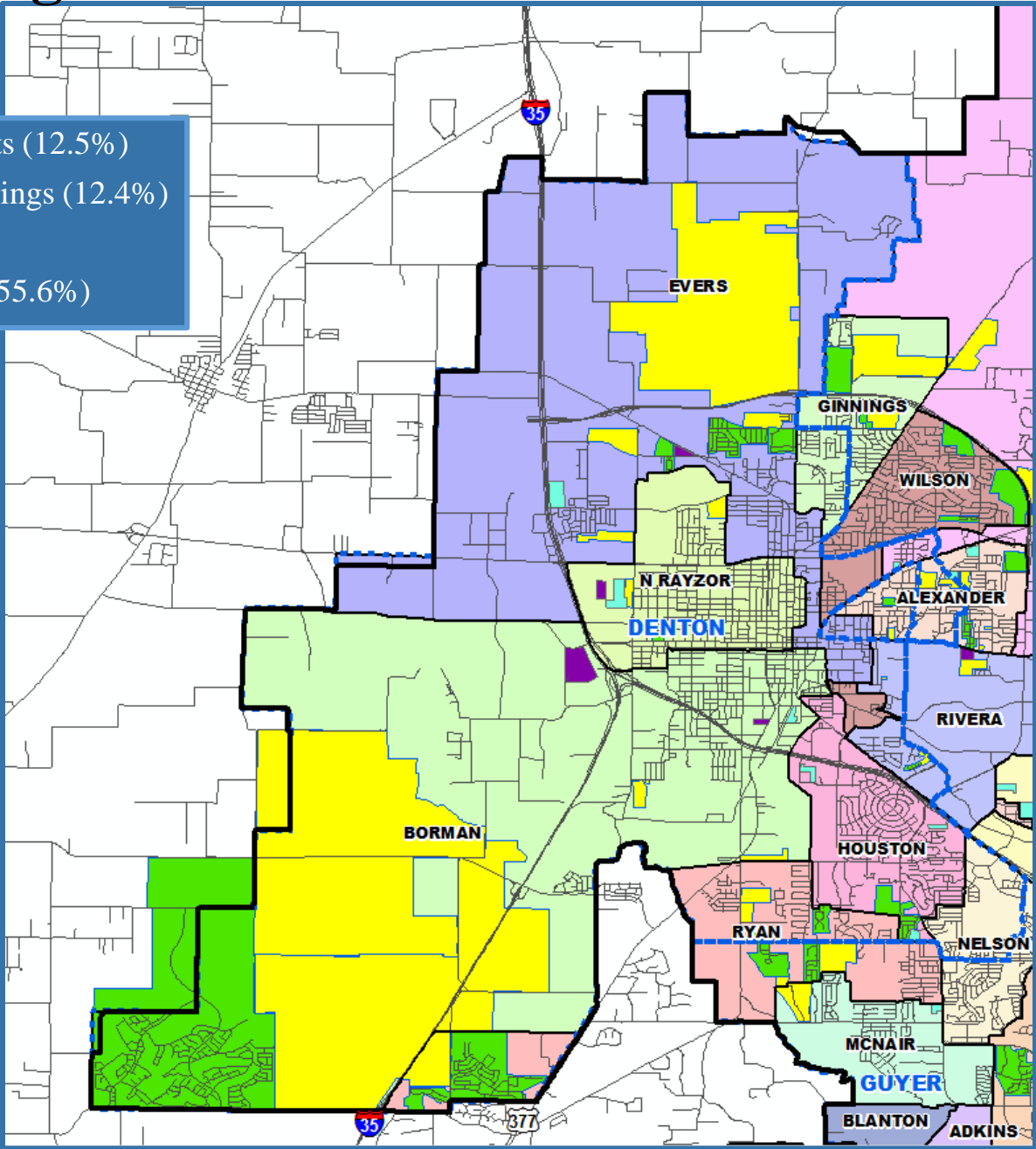
Campus Name	Capacity	HISTORY	Fall	ENROLLMENT PROJECTIONS									
		2017/18	2018/19	2019/20	2020/21	2021/22	2022/23	2023/24	2024/25	2025/26	2026/27	2027/28	2028/29
Bell Elementary School	740	801	815	648	660	691	690	686	698	708	713	714	726
Cross Oaks Elementary School	740	724	728	732	748	747	766	758	766	770	773	772	764
Paloma Creek Elementary School	740	659	784	532	540	558	561	569	573	567	559	558	559
Providence Elementary School	740	416	454	529	572	641	695	753	815	858	887	920	953
Savannah Elementary School	740	719	733	747	757	770	778	793	776	770	769	772	765
Union Park Elementary School	741	0	0	549	702	851	1,008	1,230	1,436	1,655	1,834	1,968	2,086
ELEMENTARY TOTALS	4,441	3,319	3,514	3,737	3,979	4,258	4,498	4,789	5,064	5,328	5,535	5,704	5,853
Elementary Absolute Change		315	195	223	242	279	240	291	275	264	207	169	149
Elementary Percent Change		10.49%	5.88%	6.35%	6.48%	7.01%	5.64%	6.47%	5.74%	5.21%	3.89%	3.05%	2.61%
Navo Middle School	1,181	937	989	1,061	1,126	1,162	1,193	1,220	1,307	1,345	1,424	1,472	1,548
Rodriguez Middle School	1,323	661	825	855	917	907	991	1,037	1,108	1,163	1,246	1,332	1,414
MIDDLE SCHOOL TOTALS	2,504	1,598	1,814	1,916	2,043	2,069	2,184	2,257	2,415	2,508	2,670	2,804	2,962
Middle School Absolute Change		226	216	102	127	26	115	73	158	93	162	134	158
Middle School Percent Change		16.47%	13.52%	5.62%	6.63%	1.27%	5.56%	3.34%	7.00%	3.85%	6.46%	5.02%	5.63%
Braswell High School	2,398	1,756	2,005	2,295	2,446	2,726	2,926	3,051	3,128	3,188	3,322	3,434	3,620
HIGH SCHOOL TOTALS	2,398	1,756	2,005	2,295	2,446	2,726	2,926	3,051	3,128	3,188	3,322	3,434	3,620
High School Absolute Change		536	249	290	151	280	200	125	77	60	134	112	186
High School Percent Change		43.93%	14.18%	14.46%	6.58%	11.45%	7.34%	4.27%	2.52%	1.92%	4.20%	3.37%	5.42%
BRASWELL ZONE TOTALS	9,343	6,673	7,333	7,948	8,468	9,053	9,608	10,097	10,607	11,024	11,527	11,942	12,435
Braswell Zone Absolute Change		1,077	660	615	520	585	555	489	510	417	503	415	493
Braswell Zone Percent Change		19.20%	9.90%	8.40%	6.50%	6.90%	6.10%	5.10%	5.10%	3.90%	4.60%	3.60%	4.10%

*Yellow box = over stated capacity



Denton High School Zone

- 264 Annual Starts (12.5%)
- 251 Annual Closings (12.4%)
- 439 VDL (9.8%)
- 18,032 Futures (55.6%)



Vertical Zones- Ten Year Forecast

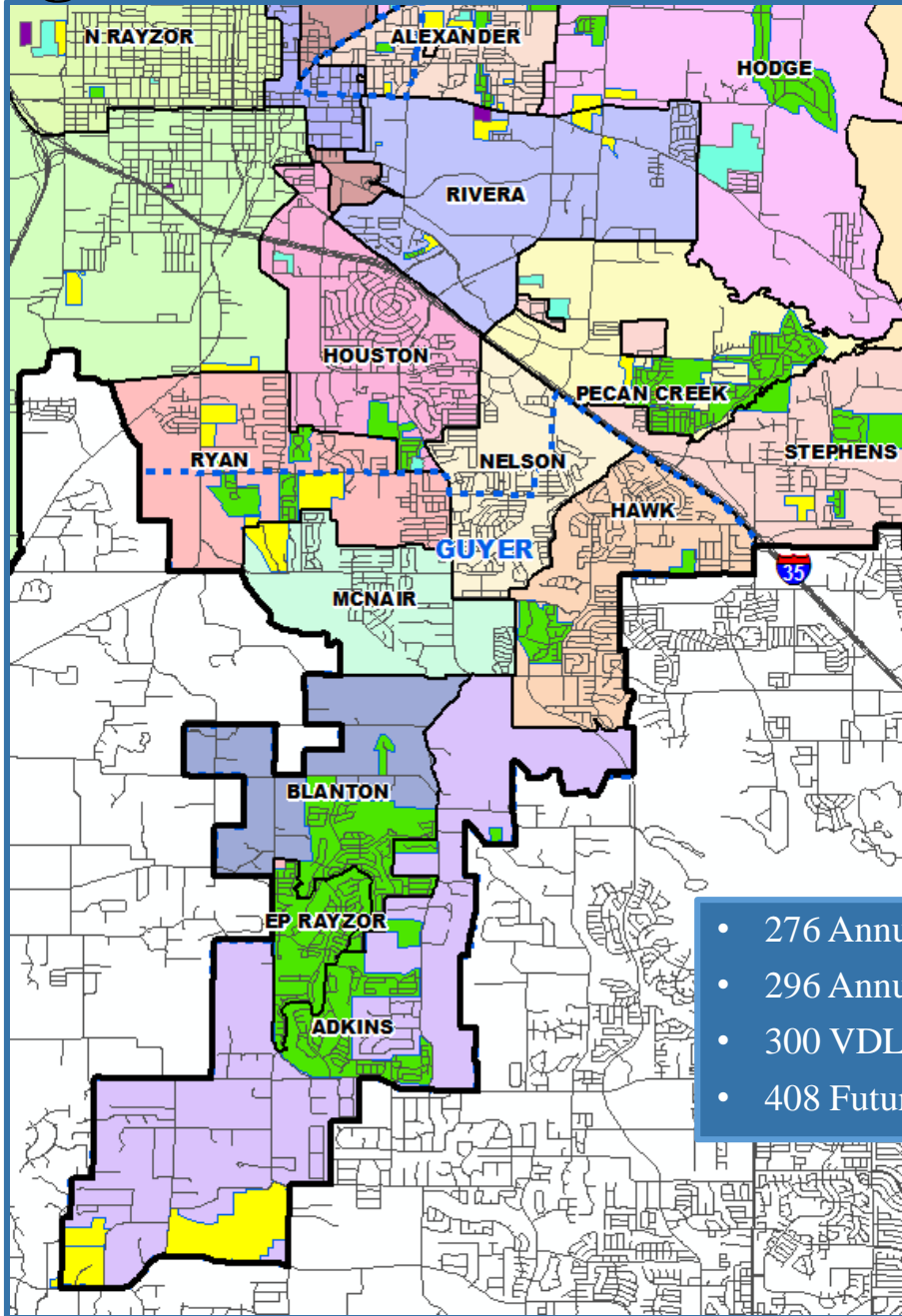
Denton High School

Campus Name	Capacity	HISTORY	FALL	ENROLLMENT PROJECTIONS									
		2017/18	2018/19	2019/20	2020/21	2021/22	2022/23	2023/24	2024/25	2025/26	2026/27	2027/28	2028/29
Alexander Elementary School	740	641	579	595	599	624	637	661	674	681	679	676	662
Borman Elementary School	740	469	425	419	435	478	503	539	580	623	662	694	736
Evers Park Elementary School	740	574	579	606	610	660	694	746	788	836	871	916	947
Sam Houston Elementary School	740	584	580	597	616	615	624	643	649	642	637	633	635
Newton Rayzor Elementary School	740	624	637	644	663	667	680	704	706	703	700	701	706
Ryan Elementary School	740	672	639	663	716	746	769	807	823	824	822	813	805
ELEMENTARY TOTALS	4,440	3,564	3,439	3,524	3,639	3,790	3,907	4,100	4,220	4,309	4,371	4,433	4,491
Elementary Absolute Change		34	-125	85	115	151	117	193	120	89	62	62	58
Elementary Percent Change		0.96%	-3.51%	2.47%	3.26%	4.15%	3.09%	4.94%	2.93%	2.11%	1.44%	1.42%	1.31%
Calhoun Middle School	1,268	729	721	719	723	726	748	726	781	809	876	911	953
McMath Middle School	1,181	781	774	810	805	833	840	878	923	952	1,017	1,071	1,106
MIDDLE SCHOOL TOTALS	2,449	1,510	1,495	1,529	1,528	1,559	1,588	1,604	1,704	1,761	1,893	1,982	2,059
Middle School Absolute Change		45	-15	34	-1	31	29	16	100	57	132	89	77
Middle School Percent Change		3.07%	-0.99%	2.27%	-0.07%	2.03%	1.86%	1.01%	6.23%	3.35%	7.50%	4.70%	3.88%
Denton High School	2,460	2,030	1,999	1,987	2,018	1,971	2,049	2,080	2,070	2,158	2,179	2,258	2,379
HIGH SCHOOL TOTALS	2,460	2,030	1,999	1,987	2,018	1,971	2,049	2,080	2,070	2,158	2,179	2,258	2,379
High School Absolute Change		-22	-31	-12	31	-47	78	31	-10	88	21	79	121
High School Percent Change		-1.07%	-1.53%	-0.60%	1.56%	-2.33%	3.96%	1.51%	-0.48%	4.25%	0.97%	3.63%	5.36%
Denton High Zone Totals	9,349	7,104	6,933	7,040	7,185	7,320	7,544	7,784	7,994	8,228	8,443	8,673	8,929
Denton Zone Absolute Change		62	-171	107	145	135	224	240	210	234	215	230	256
Denton Zone Percent Change		0.90%	-2.41%	1.54%	2.06%	1.88%	3.06%	3.18%	2.70%	2.93%	2.61%	2.72%	2.95%

*Yellow box = over stated capacity



Guyer High School Zone



- 276 Annual Starts (13.0%)
- 296 Annual Closings (14.6%)
- 300 VDL (6.7%)
- 408 Futures (1.2%)



Vertical Zones- Ten Year Forecast

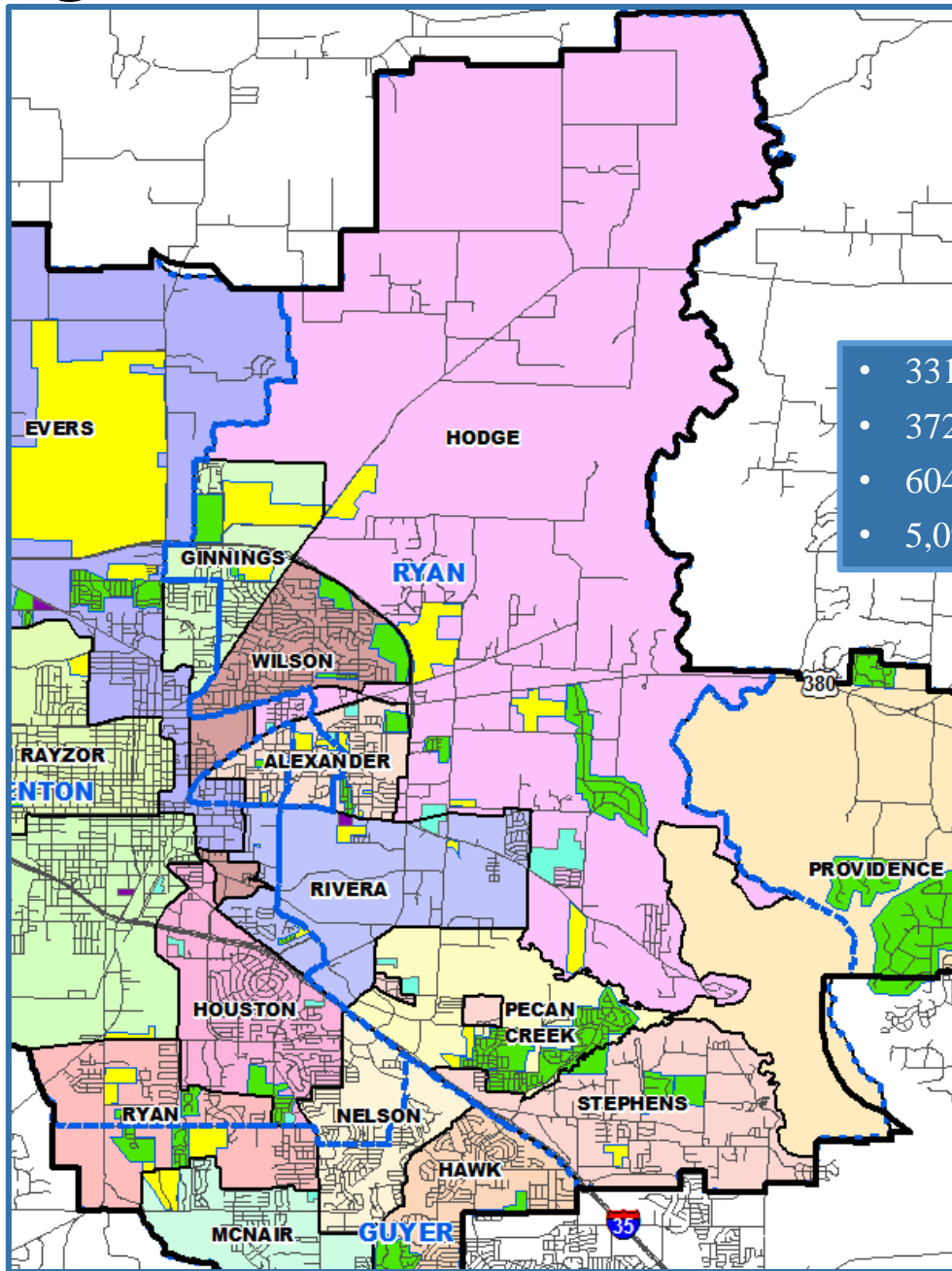
Guyer High School

Campus Name	Capacity	2017/18	FALL	ENROLLMENT PROJECTIONS									
			2018/19	2019/20	2020/21	2021/22	2022/23	2023/24	2024/25	2025/26	2026/27	2027/28	2028/29
Adkins Elementary School	740	383	402	416	420	420	411	417	427	436	445	451	457
Blanton Elementary School	740	489	499	470	472	454	474	469	480	478	474	473	468
E P Rayzor Elementary School	740	395	388	375	366	361	371	370	370	372	368	363	367
Hawk Elementary School	740	671	648	635	620	632	636	653	643	639	638	640	645
McNair Elementary School	740	533	554	534	517	525	517	532	551	560	572	581	585
Nelson Elementary School	740	634	653	656	647	639	626	636	633	630	624	631	627
ELEMENTARY TOTALS	4,440	3,105	3,144	3,086	3,042	3,031	3,035	3,077	3,104	3,115	3,121	3,139	3,149
Elementary Absolute Change		-107	39	-58	-44	-11	4	42	27	11	6	18	10
Elementary Percent Change		-3.33%	1.26%	-1.84%	-1.43%	-0.36%	0.13%	1.38%	0.88%	0.35%	0.19%	0.58%	0.32%
Crownover Middle School	1,181	927	959	932	911	845	846	796	828	813	847	843	848
Harpool Middle School	1,181	990	911	938	909	917	873	835	788	794	801	828	842
MIDDLE SCHOOL TOTALS	2,362	1,917	1,870	1,870	1,820	1,762	1,719	1,631	1,616	1,607	1,648	1,671	1,690
Middle School Absolute Change		-12	-47	0	-50	-58	-43	-88	-15	-9	41	23	19
Middle School Percent Change		-0.62%	-2.45%	0.00%	-2.67%	-3.19%	-2.44%	-5.12%	-0.92%	-0.56%	2.55%	1.40%	1.14%
John Guyer High School	3,200	2,524	2,626	2,626	2,628	2,661	2,593	2,580	2,503	2,437	2,360	2,310	2,299
HIGH SCHOOL TOTALS	3,200	2,524	2,626	2,626	2,628	2,661	2,593	2,580	2,503	2,437	2,360	2,310	2,299
High School Absolute Change		-19	102	0	2	33	-68	-13	-77	-66	-77	-50	-11
High School Percent Change		-0.75%	4.04%	0.00%	0.08%	1.26%	-2.56%	-0.50%	-2.98%	-2.64%	-3.16%	-2.12%	-0.48%
Guyer High Zone Totals	10,002	7,602	7,694	7,636	7,544	7,508	7,401	7,342	7,277	7,213	7,183	7,174	7,192
Guyer Zone Absolute Change		-133	92	-58	-92	-36	-107	-59	-65	-64	-30	-9	18
Guyer Zone Percent Change		-1.7%	1.2%	-0.8%	-1.2%	-0.5%	-1.4%	-0.8%	-0.9%	-0.9%	-0.4%	-0.1%	0.3%

*Yellow box = over stated capacity



Ryan High School Zone



- 331 Annual Starts (15.6%)
- 372 Annual Closings (18.3%)
- 604 VDL (13.5%)
- 5,092 Futures (15.7%)



Vertical Zones- Ten Year Forecast

Ryan High School

Campus Name	Capacity	FALL		ENROLLMENT PROJECTIONS									
		2017/18	2018/19	2019/20	2020/21	2021/22	2022/23	2023/24	2024/25	2025/26	2026/27	2027/28	2028/29
Ginnings Elementary School	740	569	561	559	572	575	584	604	633	657	675	702	723
Hodge Elementary School	740	584	635	629	637	691	734	802	847	863	895	920	936
Olive Stephens Elementary School	740	447	418	432	431	442	461	480	483	482	479	480	487
Pecan Creek Elementary School	740	703	665	656	661	702	726	763	780	785	788	791	785
Rivera Elementary School	740	604	620	603	607	620	616	616	628	633	633	636	632
Wilson Elementary School	740	598	617	659	670	697	709	700	698	700	697	697	699
ELEMENTARY TOTALS	4,440	3,505	3,516	3,538	3,578	3,727	3,830	3,965	4,069	4,120	4,167	4,226	4,262
Elementary Absolute Change		-95	11	22	40	149	103	135	104	51	47	59	36
Elementary Percent Change		-2.64%	0.31%	0.63%	1.13%	4.16%	2.76%	3.52%	2.62%	1.25%	1.14%	1.42%	0.85%
Strickland Middle School	1,334	881	907	930	938	935	944	955	1002	1030	1,057	1,084	1,123
Bette Myers Middle School	1,323	773	866	864	863	843	838	799	811	827	860	896	917
MIDDLE SCHOOL TOTALS	2,657	1,654	1,773	1,794	1,801	1,778	1,782	1,754	1,813	1,857	1,917	1,980	2,040
Middle School Absolute Change		-95	119	21	7	-23	4	-28	59	44	60	63	60
Middle School Percent Change		-5.43%	7.19%	1.18%	0.39%	-1.28%	0.22%	-1.57%	3.36%	2.43%	3.23%	3.29%	3.03%
Fred Moore High School		49	64	64	64	64	64	64	64	64	64	64	64
Ryan High School	2,340	2,048	2,103	2,139	2,198	2,236	2,199	2,258	2,188	2,152	2,208	2,178	2,250
HIGH SCHOOL TOTALS	2,340	2,097	2,167	2,203	2,262	2,300	2,263	2,322	2,252	2,216	2,272	2,242	2,314
High School Absolute Change		36	70	36	59	38	-37	59	-70	-36	56	-30	72
High School Percent Change		1.75%	3.34%	1.66%	2.68%	1.68%	-1.61%	2.61%	-3.01%	-1.60%	2.53%	-1.32%	3.21%
Ryan High Zone Totals	9,437	7,256	7,456	7,535	7,641	7,805	7,875	8,041	8,134	8,193	8,356	8,448	8,616
Ryan Zone Absolute Change		-149	200	79	106	164	70	166	93	59	163	92	168
Ryan Zone Percent Change		-2.00%	2.76%	1.06%	1.41%	2.15%	0.90%	2.11%	1.16%	0.73%	1.99%	1.10%	1.99%

*Yellow box = over stated capacity



Alternate Campus- Ten Year Forecast

Campus Name	Capacity	HISTORY	FALL	ENROLLMENT PROJECTIONS									
		2017/18	2018/19	2019/20	2020/21	2021/22	2022/23	2023/24	2024/25	2025/26	2026/27	2027/28	2028/29
Ann Windle School For Young Child	740	390	339	339	339	339	339	339	339	339	339	339	339
Gonzalez School For Young Child	740	333	326	326	326	326	326	326	326	326	326	326	326
Denton J J A E P		5	3	3	3	3	3	3	3	3	3	3	3
Juvenile Detention CTR		56	54	54	54	54	54	54	54	54	54	54	54
Lester Davis School		56	31	31	31	31	31	31	31	31	31	31	31
ALTERNATIVE SCHOOL TOTALS		840	753	753	753	753	753	753	753	753	753	753	753
DISTRICT TOTALS	39,611	29,419	30,115	30,858	31,537	32,385	33,128	33,965	34,713	35,358	36,208	36,936	37,871
District Absolute Change		791	696	743	679	848	743	837	748	645	850	728	935
District Percent Change		2.76%	2.37%	2.47%	2.20%	2.69%	2.29%	2.53%	2.20%	1.86%	2.40%	2.01%	2.53%





Summary

- Denton's unemployment rate is 3%.
- Denton ISD has the 2nd most annual closings of any district in DFW, behind only Prosper in new home activity.
- In 2Q19, Denton ISD had the most new home closings in a single quarter in more than 12 years.
- The Union Park Elementary zone accounts for 40% of all district new home starts in the last 12 months.
- Denton ISD can expect an increase of nearly 3,850 students during the next 5 years.
- 2023/24 enrollment projection: 33,965 students.
- DISD is projected to enroll more than 37,870 students for the 2028/29 school year.