

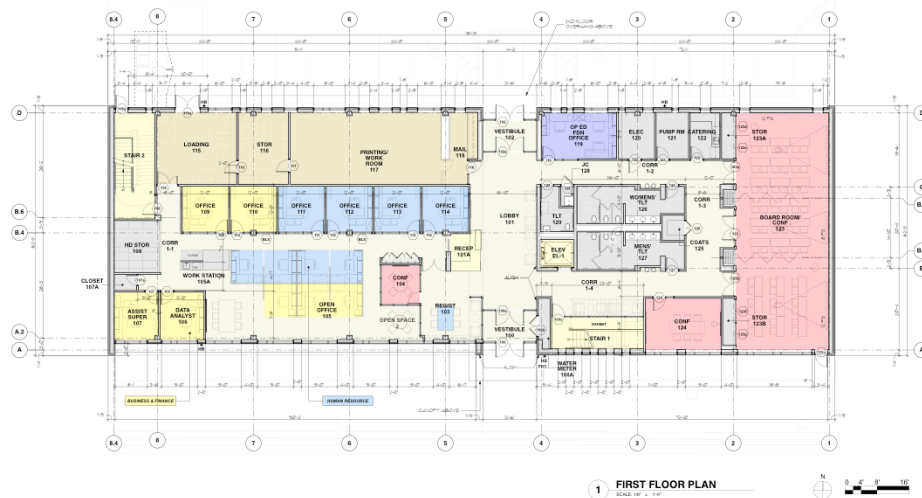


Oak Park Elementary School District 97

Administration Building Project Update 05.26.15

STR

ENHANCING NOW ENVISIONING FUTURES



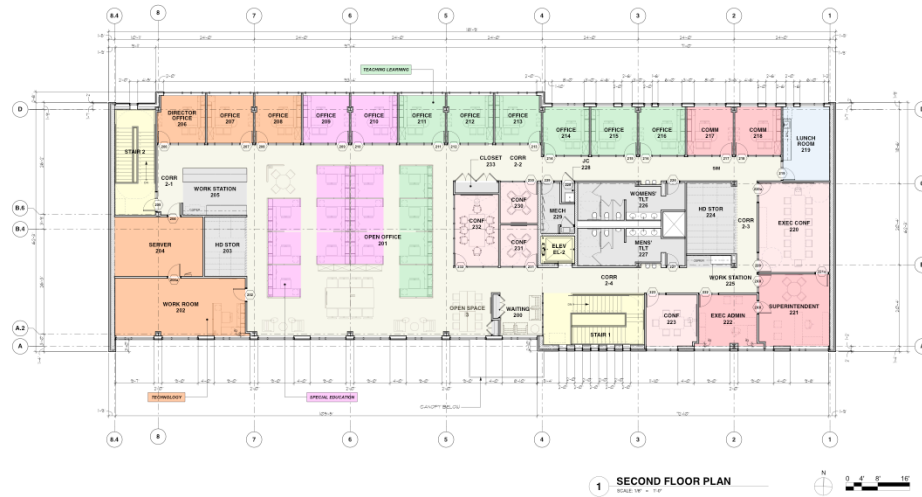
STR

First Floor Plan (Madison Street is to bottom of page)

The overall concept is to push to the east and west the uses that do not benefit from a window

- Stairs, storage, conference since less occupied than an office
- There is a main circulation/entry spine from Madison and Parking Lot with Reception at the center.
- The public side is to the east with access to the toilets, conference rooms and even registration.
- The west side is devoted to back of the house (print shop and loading/receiving) and HR and Business/Finance departments.
- High Density storage is provided for these two departments with copier/work station adjacent

Second Floor Plan



STR

Second Floor Plan (Madison Street is to bottom of page)

Again, the ancillary spaces are pushed to the east and west ends in order to leave the center open as possible.

- The remainder of departments are located on second floor
- Individual offices located along the north wall.
- Open offices located in center and facing Madison
- As with the first floor, there is a mix of private spaces and collaborative spaces
- Every office is the same size – smaller size that can handle only 2-3 people.
- To allow for groups of 4-5 administrators to meet, small conference rooms have been provided
 - 2 on second floor
 - 1 on first floor
- High Density storage is provided in two locations on this floor with copy/work stations adjacent.
-



View from above Madison Street

STR

Exterior Images

The exterior continues to be refined.

- We have eliminated the overhang along the building and created a canopy over the main entrance.
 - FAC has commented on the height/elevation of the canopy and recommends STR study lowering the canopy – we are looking into this and how it affects the structural framing and cost.
- Sunshades integral to the curtainwall system are provided at the west portion of building – south façade.
- We have eliminated the wood grain aluminum siding on the east end where the product would have no buffer from passers-by. Masonry piers are provided instead.
- The colored glass remains but is more subtle and continues to symbolize for us student energy and give a hint of the celebration of students inside – we call this the fireworks.
- All windows are floor to ceiling – with exception of the planter area – windows start at 2 feet above floor.
- There is a mechanical penthouse on the roof with adjacent air handling equipment screened by metal panels – all in accordance with the Zoning Ordinance.
-

View looking east on
Madison Street



View looking west on
Madison Street



STR



View from Julian MS site

STR

Exterior Images

The north façade facing Julian MS has a more horizontal feel.

The materials are applied differently to account for higher abuse with cars and trucks near the building.

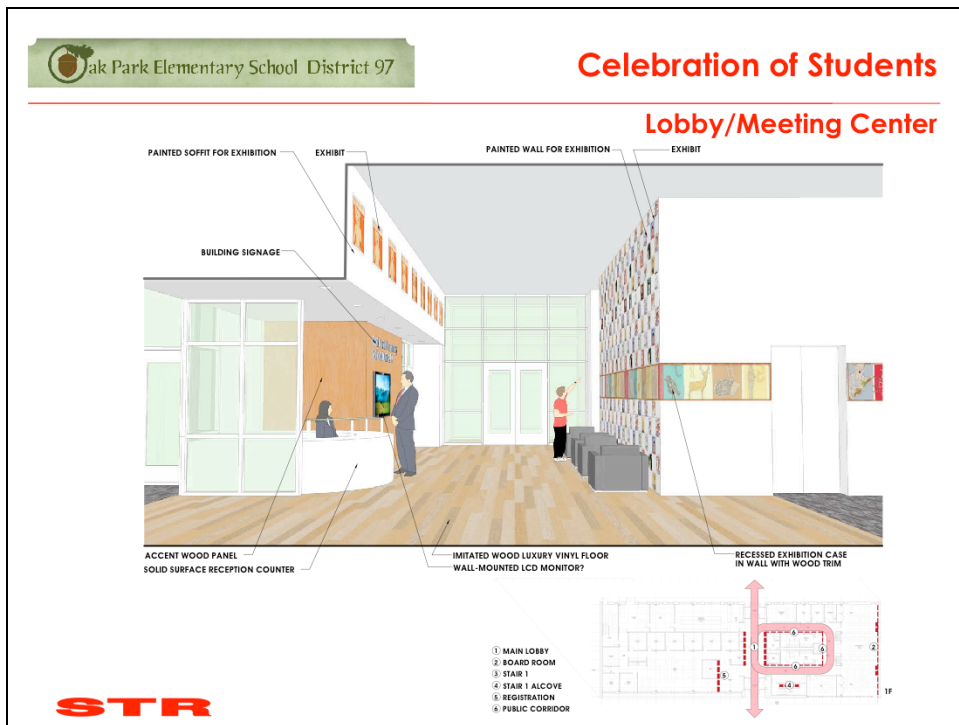
Masonry is along the entire first floor.

Wood grain aluminum siding is along the second floor.

There are two tones of the siding, the area of 2nd floor overhang having a darker tone.

Second floor windows are again floor to ceiling.

First floor windows are raised to protect from and shield view of cars.



Celebration of Students

One of the goals from the Focus Group meetings is that this building should clearly express a celebration of students.

We have identified areas in the building to do this

1. Lobby
2. Board Room
3. Main Stair
4. Registration

There is also the idea that some should be permanent and some should be changing so not static.

The goal is to engage the Art Teachers so that this can be part of the planned curriculum for next year.

Lobby:

- The tall wall is conceived of as a wall of tiles designed by students (a portrait, a depiction of their school, or some theme) – permanent art
- The frieze going around the public core provides a continuous theme of student art. The frieze is intended to be changing art – 2-D art behind removable glass.
- Exhibit space is also located above the reception desk.

We also have opportunity to tie in the wood siding from exterior in the lobby. Provides a place for District identity and announcements with a flatscreen or other device.

Board Room



Board Room

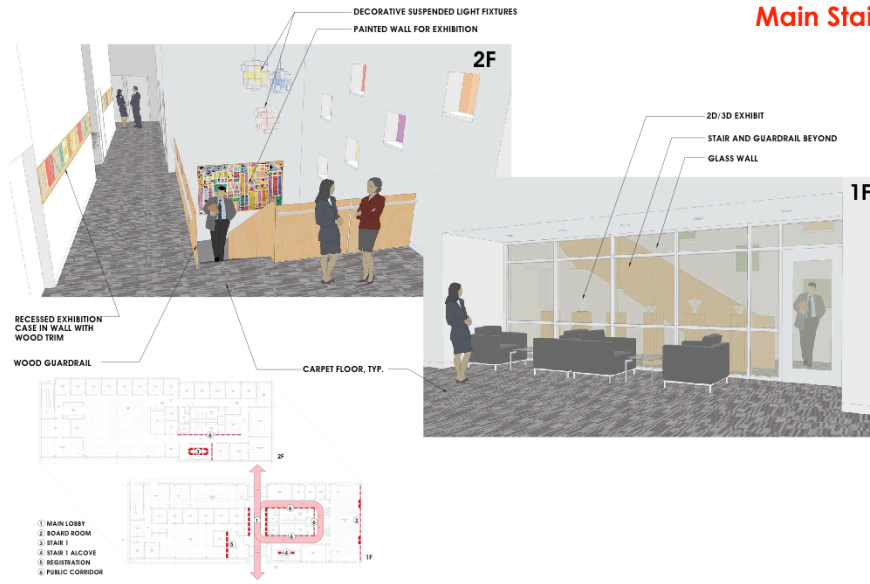
Continuing the wood paneling with a picture rail at chair height.

Student art in this room is conceived of being dynamic

- Not only changing out physical art,
- Utilizing the projectors in each of the 3 spaces to project student work, students at work, performance clips, etc.
 - would be District controlled
 - mostly before meetings or when no meetings, but activities.

This display is still under further development.

Main Stair



Main Stair

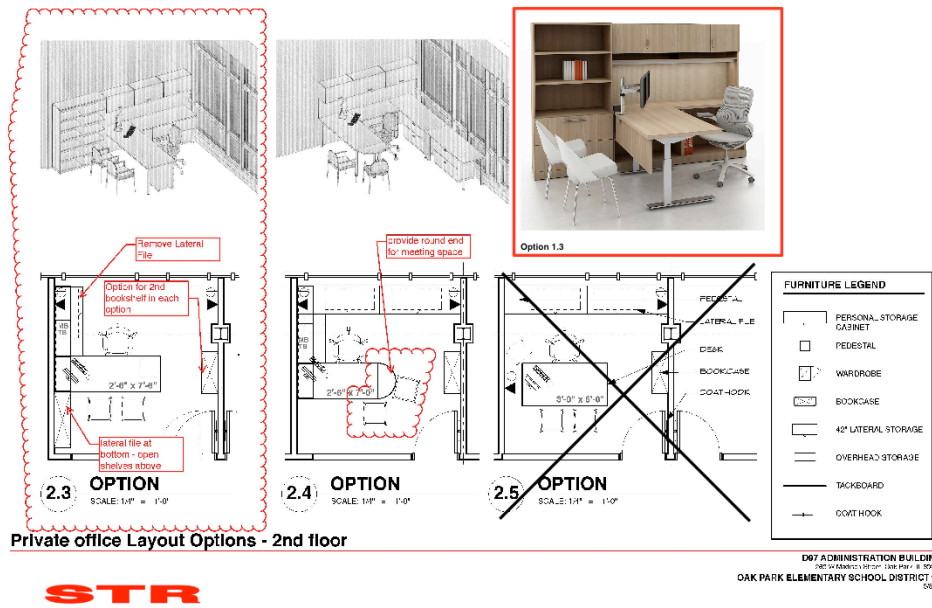
Wanted to step back and be more subtle at the stair.

We are letting the colored windows provide the art but have located spaces art can be integrated if desired.

The first floor provides a casual seating area – pre-function for events at conference rooms, or during the day. Using glass wall for security reasons, but keeps the idea of transparency – shows activity of the stair.

Provided a space for some 3-D art behind the glazing.

There is a place at the landing to show artwork – and opportunity for a hanging element (either lighting or a mobile).



Offices

Each individual office is the same size and has also been standardized to have the same layout.

The exterior windows are left free of furniture.

The desk surface is L-shaped to allow administrator to face the interior open office or the wall to see both outside and inside.

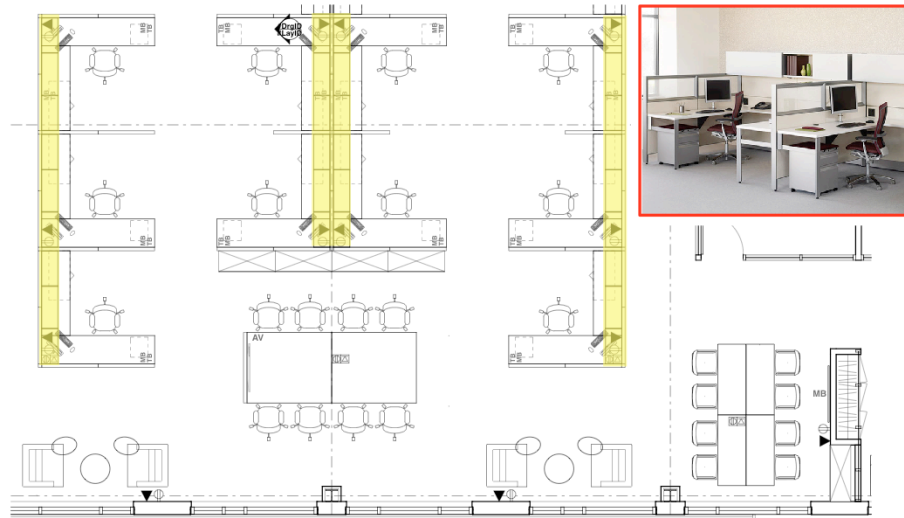
Lateral files are moved outside of desk area with shelving above.

Guest chairs are provided and a rounded end for informal meeting.

Room allows for a second bookshelf if needed for certain departments.

All offices have glass walls to the inside again with idea of transparency as well as maximizing daylight within the building – borrowing light where possible.

Typical Open Cubicles



Open office Layout Options - 2nd Floor

STR

D97 ADMINISTRATION BUILDING
2403 W Madison Street, Oak Park, IL 60302
OAK PARK ELEMENTARY SCHOOL DISTRICT 97
JWB/10

Open Cubicle Offices

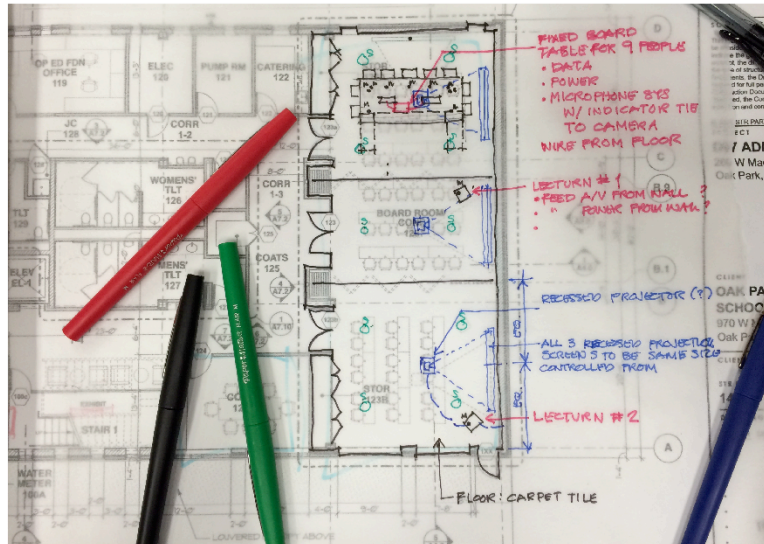
Cubicles are roughly 8feet x 8feet (slightly smaller than existing)

Each station will have overhead storage cabinets with doors, L-shaped desk, and under counter lateral files.

Overhead cabinets, because they are taller, are located in the north-south direction to maintain views to the outside in either direction.

The preference is to have glass panels at the top of the dividing partitions – again to further idea of transparency but also to provide a sense of space to the cube.

Option for Permanent Board Table



STR

Board Room Layout

After considering the use of the space, it is preferred to provide a fixed table for the Board members.

- Concern is time for set up and break down of furniture
- For power and data wiring set up for meetings

Concept now is to create a table that seats 9 comfortably for Board meetings that is also adaptable for use as a conference table during the day

- so a large table but not too large to make conferences dysfunctional.

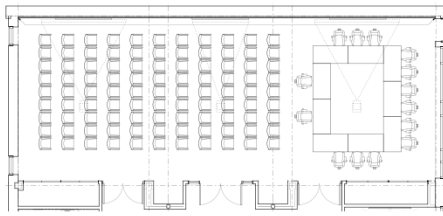
Because this is a permanent table, it was agreed that it makes more sense to set up the Board meetings with the table to the north end of the room. This leaves the space along Madison more dynamic as it changes functions. During Board meetings, there is the option to leave all operable doors open to allow transparency during the meeting.

The room is divisible into three spaces. So there will be three projectors and screens along the east wall.

The wall behind the Board table will now be developed to accommodate for District identity as a permanent backdrop to the Board table.

Board Room Layout

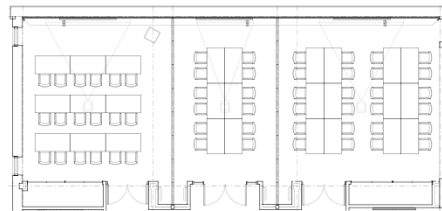
Options for Flexible Layout



Boardroom - Option 1

STR

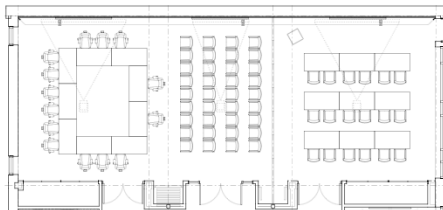
017 ADMINISTRATION BUILDING
1000 NORTH LAUREL STREET, SUITE 100
OAK PARK ELEMENTARY SCHOOL DISTRICT 97



Boardroom - Option 3

STR

017 ADMINISTRATION BUILDING
1000 NORTH LAUREL STREET, SUITE 100
OAK PARK ELEMENTARY SCHOOL DISTRICT 97



Boardroom - Option 2

STR

017 ADMINISTRATION BUILDING
1000 NORTH LAUREL STREET, SUITE 100
OAK PARK ELEMENTARY SCHOOL DISTRICT 97

STR

Meeting Center Layouts

The options here show the various ways the three spaces can be used – with several more iterations possible.

They are slightly out of date now that we understand the preferred Board table configuration



View from above Madison Street

STR

Q&A