

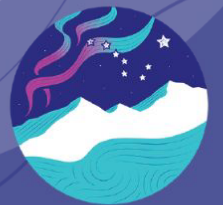
# AASB Grant Partnership Update:



**ALASKA FAMILY  
ENGAGEMENT CENTER**

September 29, 2025

Claudia Pleșa [cpleșa@aasb.org](mailto:cpleșa@aasb.org)





**ALASKA FAMILY  
ENGAGEMENT CENTER**

RESOURCES ▾

SPOTLIGHT

TRAININGS & EVENTS

ABOUT ▾

CONTACT

# ALASKA FAMILY ENGAGEMENT CENTER

Welcome to the Alaska Family Engagement Center. Our mission is to improve school-family partnerships across the state by providing access to training, resources, and activities for schools and families.



[www.AlaskaFEC.org](http://www.AlaskaFEC.org)

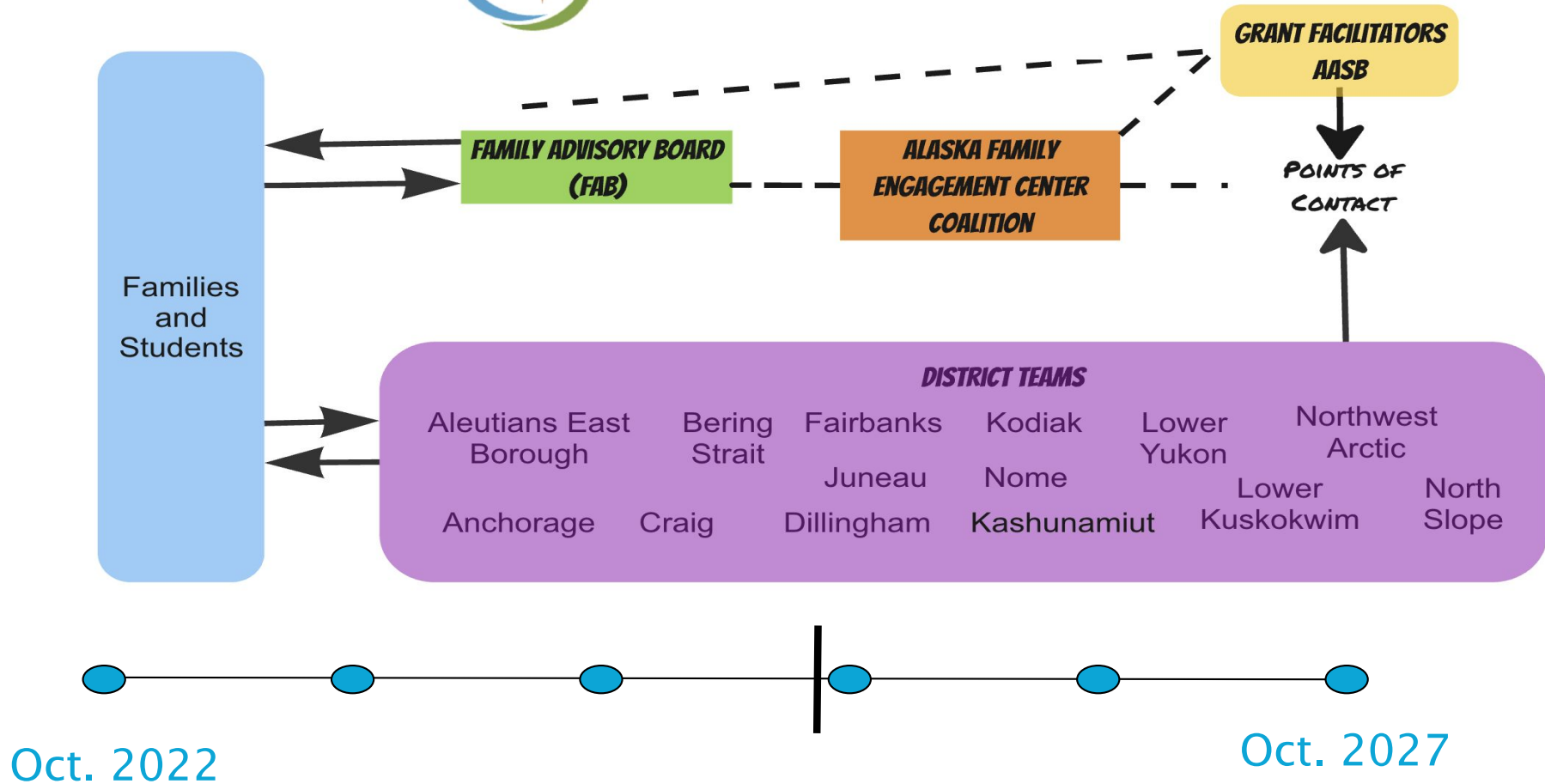
# Family Engagement is..



The practice of building partnerships between families, schools, & community members to drive student success in school and beyond.



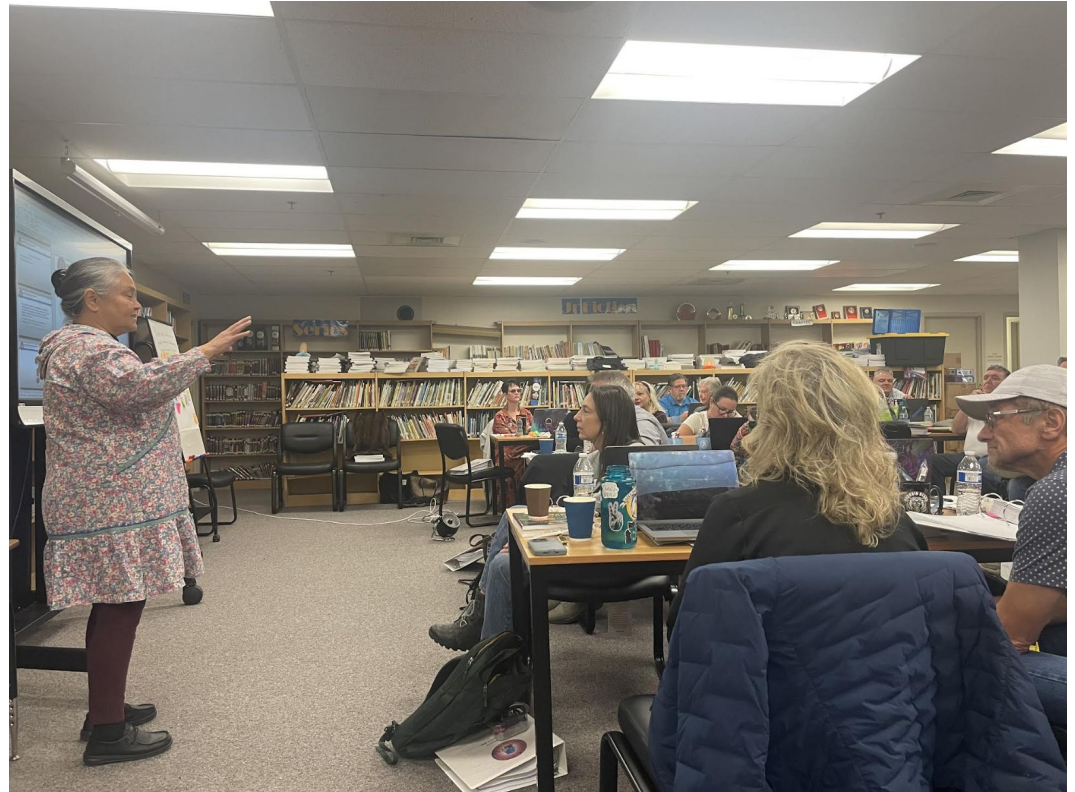
## ALASKA FAMILY ENGAGEMENT CENTER





# Training for Staff/Teams

- **Convenings**
  - Safety & Wellbeing
  - Community dialogue training
- **Virtual**
  - PLC (Earn credits)
  - Team building/learning
- **Tailored**
  - Counseling team
  - Admin/leadership teams





*98% of staff who participated in training reported having enhanced capacity to work with families to meet the academic and developmental needs of their children.*

# Trainings for Families

Registration Open!

## HELPING OUR KIDS THRIVE THIS SCHOOL YEAR

Virtual Training Series for Parents, Gaurdians, and Caregivers

### We Meet Twice a Month

- First Wednesday @ 12:00pm - 1:30pm
- Third Wednesday @ 6:00pm - 7:30pm

Opportunity to have an open  
conversation and ask questions with  
others who share similar interests.

[Register Here](#)



Starting September - First and Third Wednesdays



# LOVE AROUND READING (AND PLANNING AWESOME FAMILY NIGHTS) – NORTHWEST ARCTIC BOROUGH SCHOOL DISTRICT

February 29, 2024



# Resources:

Family Reading Toolkits  
NWSB schools:  
Amber, Buckland, Deering,  
Kiana, Kobuk, Noatak.



## Books for families:

The Our Alaskan Home Family Night 2.0 Toolkit has been designed to accompany these books:



Other toolkits have been designed for:

## I Know I Can



## Online Safety



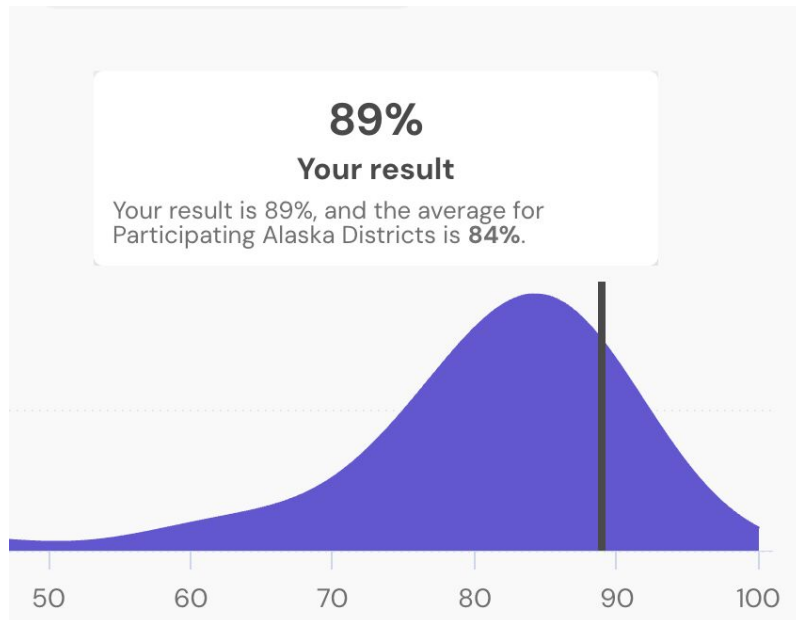
## Howling with Huskies



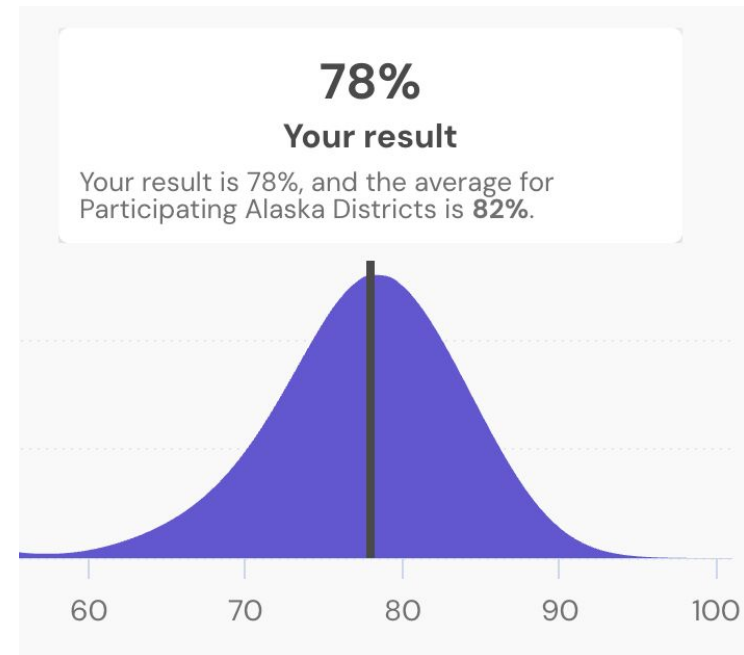
# School Climate & Connectedness Survey

## Family-School Partnership Scale

Staff said...



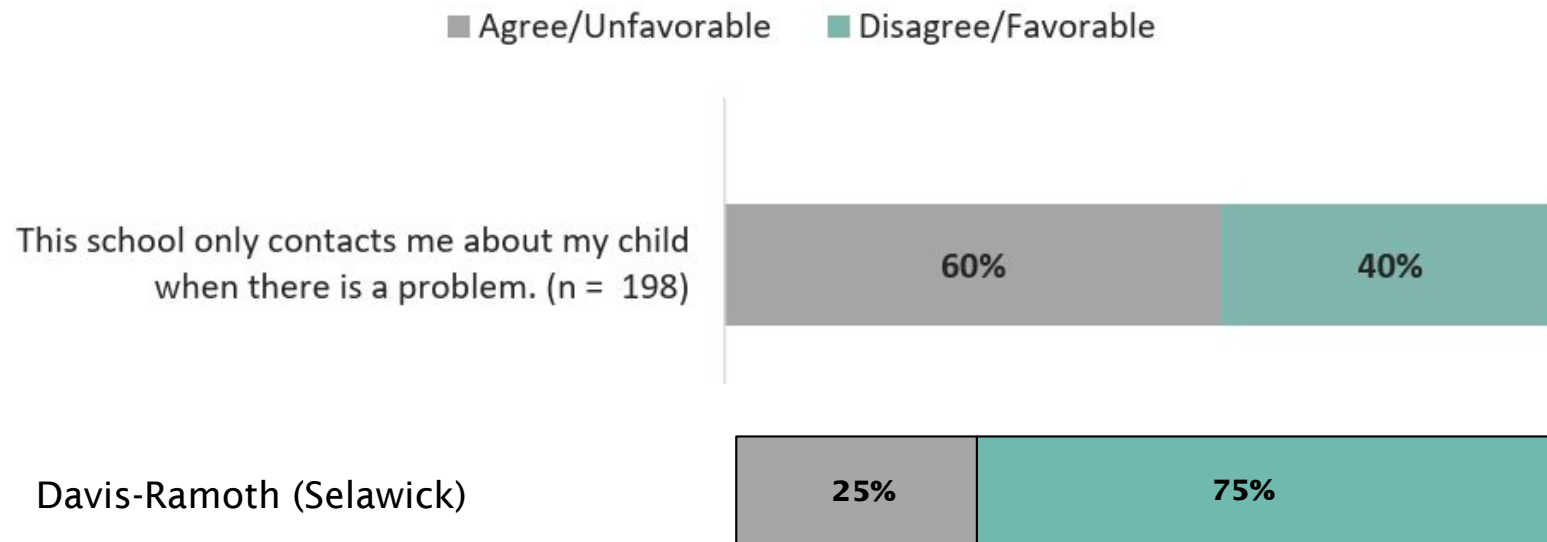
Families said....



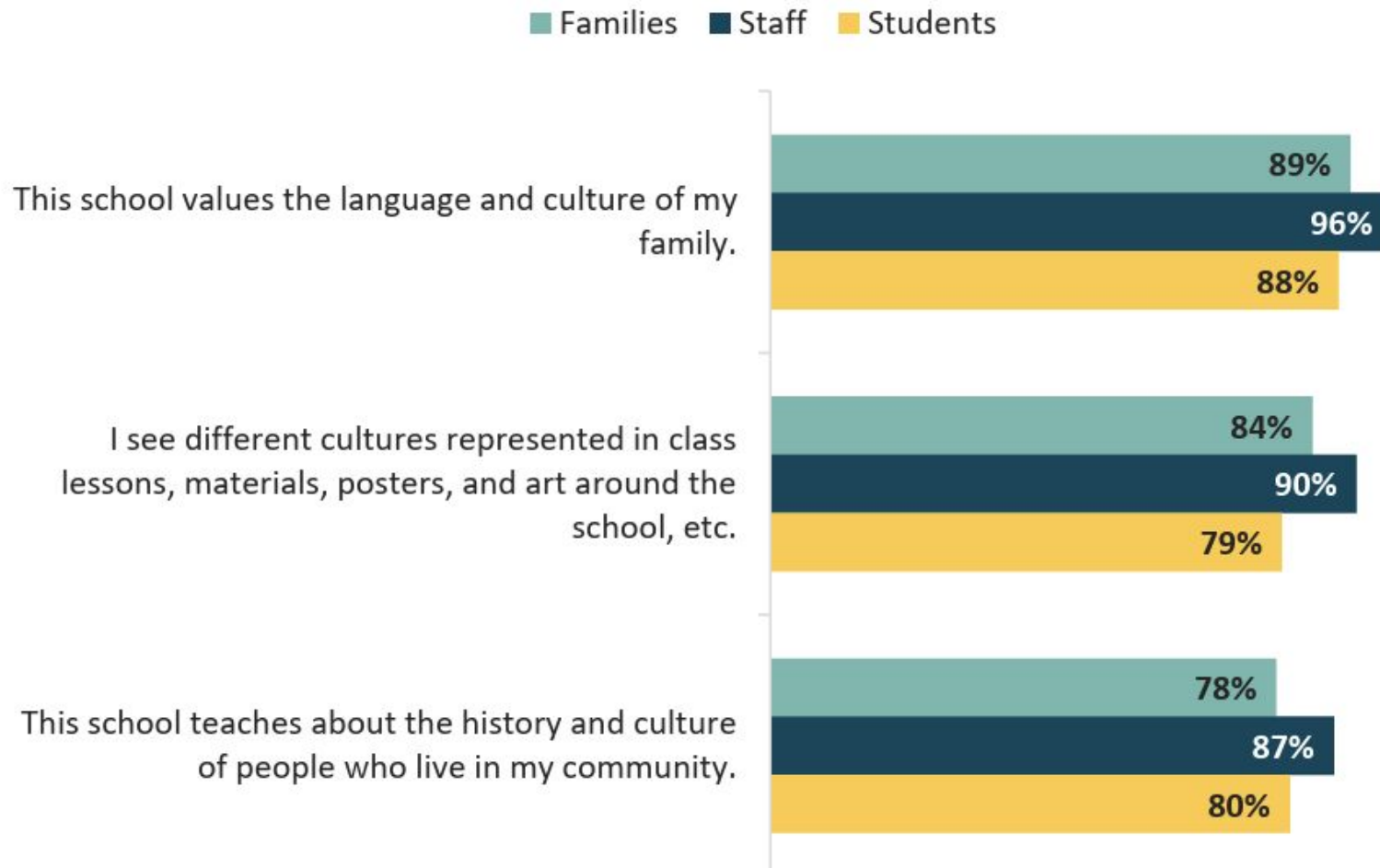


# School Climate & Connectedness Survey

*Figure 3. Percentage of families who agreed about when their school contacts them*



**Figure 7. Percentage of favorable responses on survey items related to cultural connectedness**



## Policy & Strategic Planning

- Reduced cost strategic planning services
- Facilitation training & support
- Enhanced process:
  - Ex: Community Cafe to augment Survey

**Thank you!**

Contact information

Claudia Plesa  
[CPlesa@aasb.org](mailto:CPlesa@aasb.org)

971.235.6642

Association of Alaska School Boards  
1111 W. 9th Street, Juneau, Alaska 99801  
907-463-1660



