

*Denton  
Independent  
School  
District*



Quarterly  
Report  
4Q17

*Learn from Yesterday...  
Understand Today...  
Plan for Tomorrow*



TEMPLETON  
DEMOGRAPHICS



# Economic Conditions – DFW Area (December 2017)

**2.8%**

101,539 new jobs  
National rate 1.2%



**Job Growth**

**Unemployment Rate**



U.S. 3.9%  
Texas 3.7%  
DFW MSA 3.1%  
Denton 2.6%

**-0.7%**

**33,262**

3,202 more starts than 4Q16



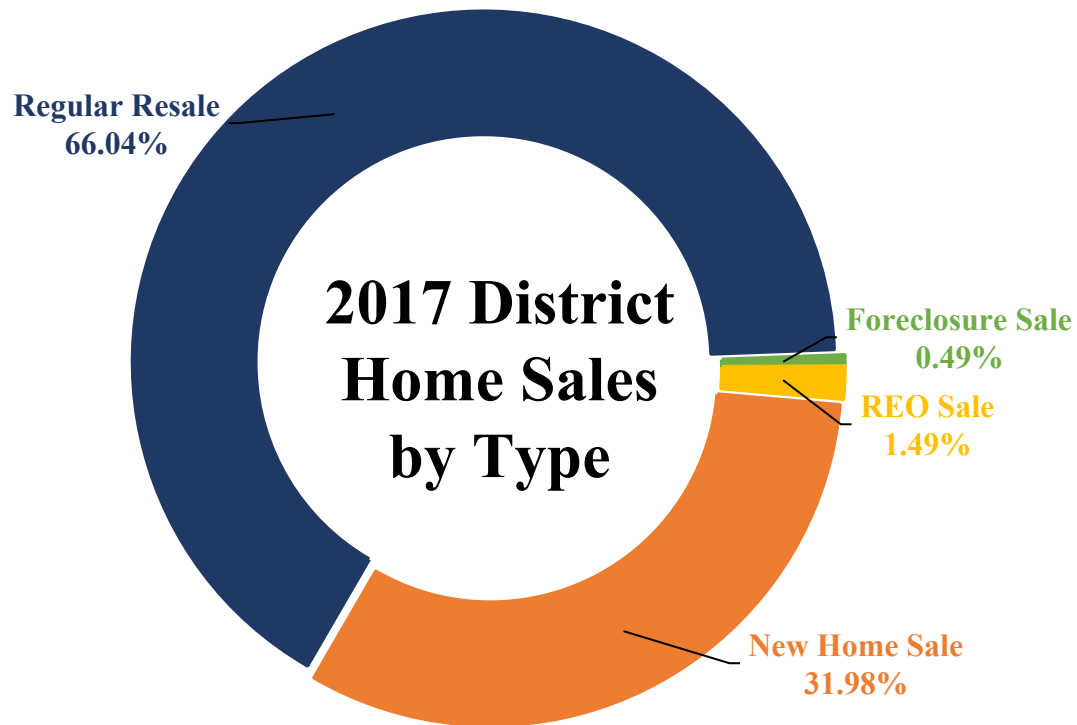
**Annual Home Starts**





# Denton ISD Housing Activity

## 2017 Home Sales by Transaction Type



- Denton ISD had 5,960 home sales in 2017, and roughly 32% were new homes
- The average new home sale price in Denton ISD in 2017 was \$307,123
- The average existing home sale price in Denton ISD in 2017 was \$270,111





# DFW New Home Ranking Report

## ISD Ranked by Annual Closings – 4Q17

Rank	District Name	Annual Starts	Annual Closings	VDL	Future
1	Frisco ISD	2,486	2,729	4,488	5,628
2	Prosper ISD	2,890	2,692	6,351	24,785
3	Northwest ISD	1,870	1,945	2,014	25,518
<b>4</b>	<b>Denton ISD**</b>	<b>2,037</b>	<b>1,883</b>	<b>2,651</b>	<b>33,081*</b>
5	Dallas ISD	2,041	1,854	1,733	7,339
6	Little Elm ISD	1,473	1,258	1,227	3,436
7	Lewisville ISD	1,141	1,188	1,943	4,485
8	Rockwall ISD	968	961	1,862	8,291
9	Eagle Mt.-Saginaw ISD	1,181	925	1,377	19,265
10	McKinney ISD	788	863	1,626	8,084
11	Forney ISD	1,120	850	1,595	13,949
12	Wylie ISD	813	759	1,164	3,996
13	Mansfield ISD	654	710	1,018	6,836
14	Allen ISD	711	707	1,406	1,208
15	Midlothian ISD	768	611	1,331	19,550
16	Fort Worth ISD	587	606	824	5,034
17	Garland ISD	411	578	390	4,065
18	Crowley ISD	653	537	996	12,584
19	Waxahachie ISD	574	511	754	9,446
20	Keller ISD	372	487	708	1,746

\*Based on additional Templeton Demographics housing research

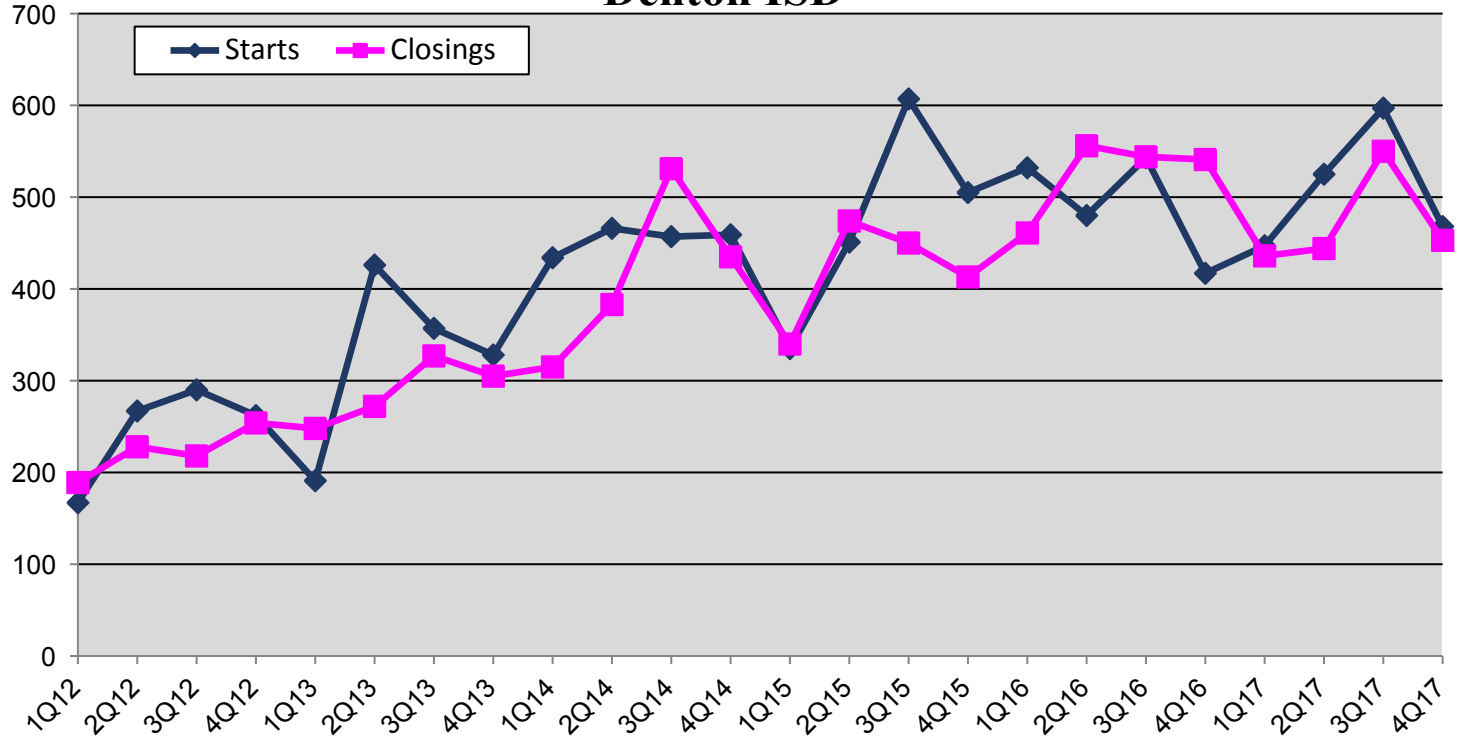
\*\*Table DOES include age restricted communities





# New Housing Activity

## Denton ISD



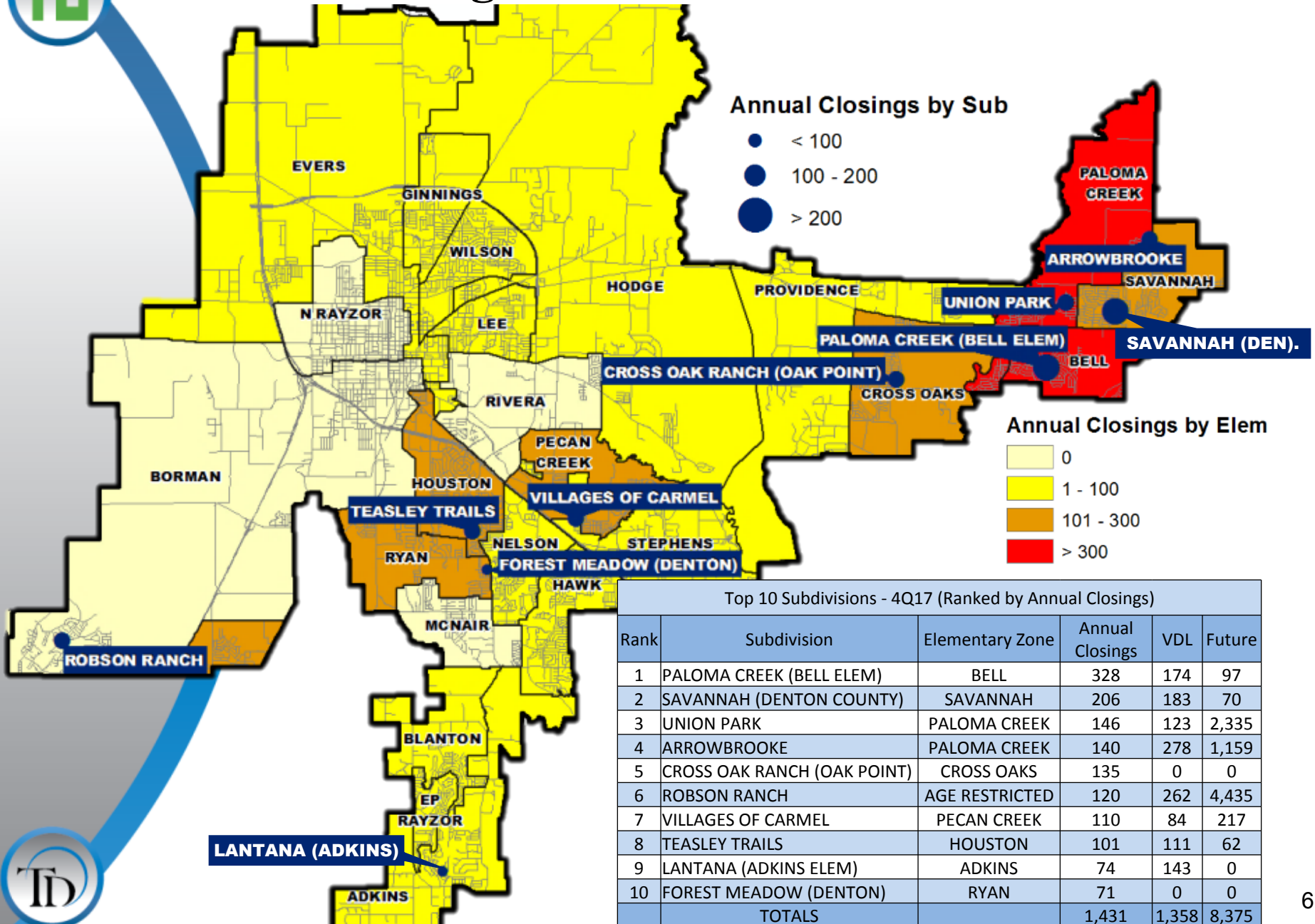
Starts	2012	2013	2014	2015	2016	2017
1Q	167	191	434	335	532	447
2Q	267	426	466	451	480	525
3Q	290	357	457	607	543	597
4Q	262	328	459	505	417	468
Total	986	1,302	1,816	1,898	1,972	2,037

Closings	2012	2013	2014	2015	2016	2017
1Q	189	248	315	340	461	436
2Q	228	272	383	474	556	444
3Q	218	327	531	450	544	550
4Q	254	305	435	413	541	453
Total	889	1,152	1,664	1,677	2,102	1,883

- Denton ISD started more than 2,000 new homes in 2017, the most annual closings in more than 9 years
- District closings slowed from 2016, but are expected to rebound as builders work through available inventory



# Annual Closing Distribution



Annual Closings by Sub

- < 100
- 100 - 200
- > 200

Annual Closings by Elem

- 0
- 1 - 100
- 101 - 300
- > 300

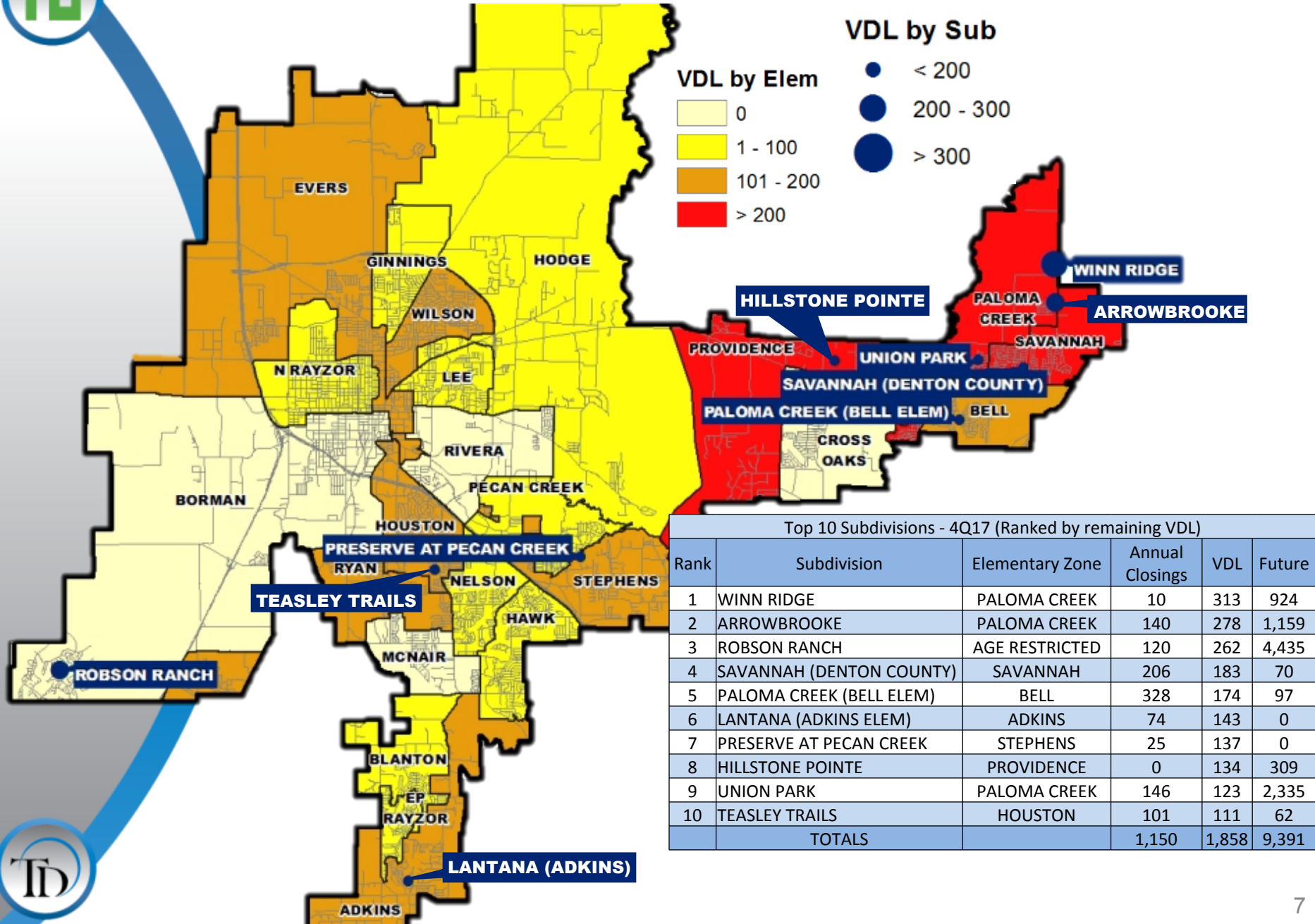
Top 10 Subdivisions - 4Q17 (Ranked by Annual Closings)

Rank	Subdivision	Elementary Zone	Annual Closings	VDL	Future
1	PALOMA CREEK (BELL ELEM)	BELL	328	174	97
2	SAVANNAH (DENTON COUNTY)	SAVANNAH	206	183	70
3	UNION PARK	PALOMA CREEK	146	123	2,335
4	ARROWBROOKE	PALOMA CREEK	140	278	1,159
5	CROSS OAK RANCH (OAK POINT)	CROSS OAKS	135	0	0
6	ROBSON RANCH	AGE RESTRICTED	120	262	4,435
7	VILLAGES OF CARMEL	PECAN CREEK	110	84	217
8	TEASLEY TRAILS	HOUSTON	101	111	62
9	LANTANA (ADKINS ELEM)	ADKINS	74	143	0
10	FOREST MEADOW (DENTON)	RYAN	71	0	0
TOTALS			1,431	1,358	8,375





# VDL Distribution



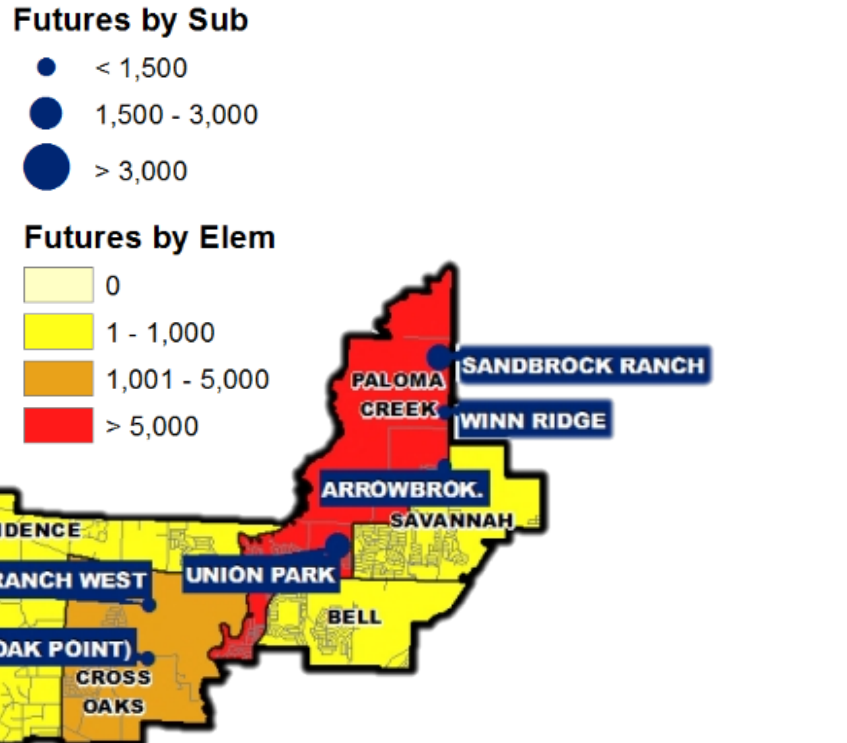
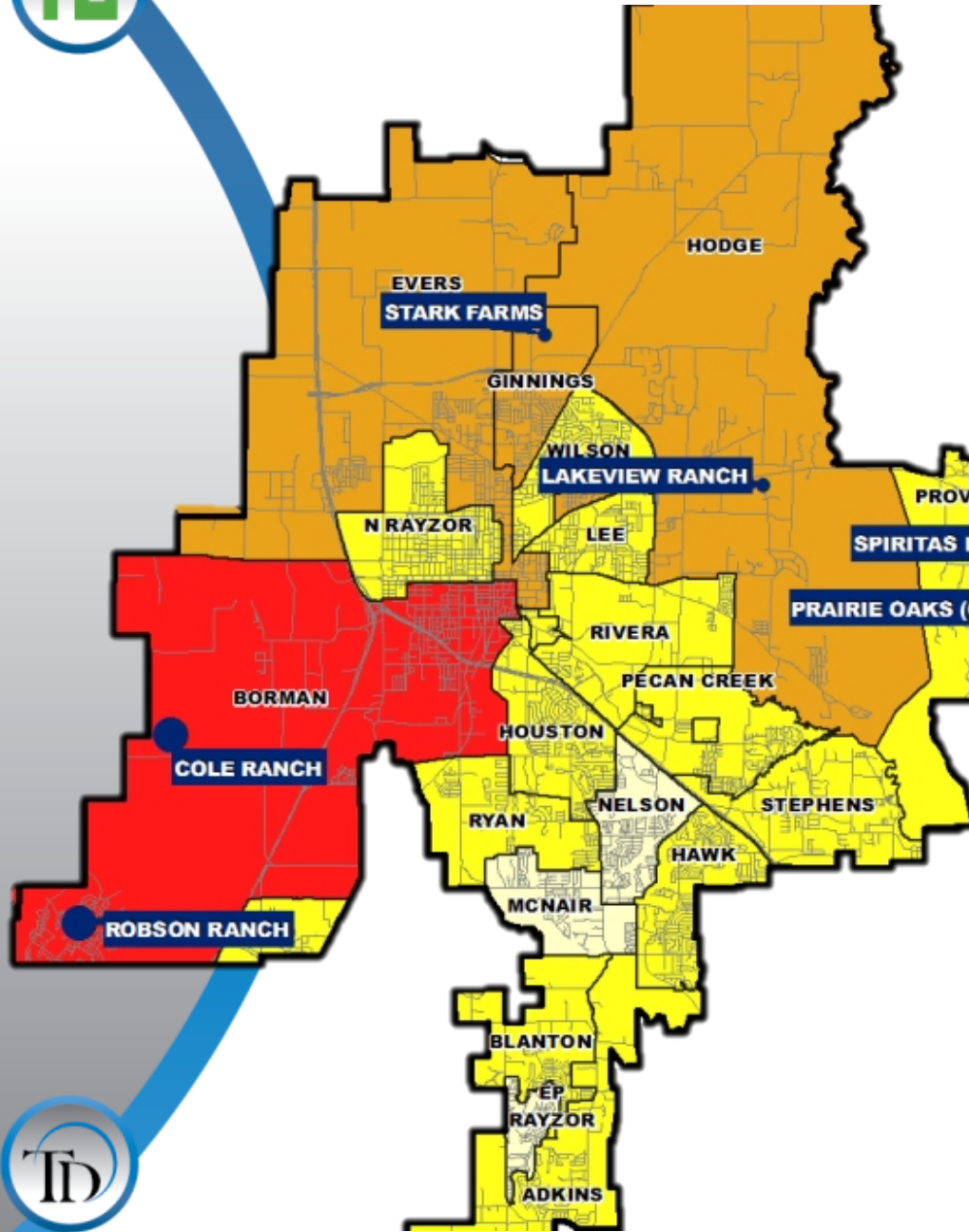
Top 10 Subdivisions - 4Q17 (Ranked by remaining VDL)

Rank	Subdivision	Elementary Zone	Annual Closings	VDL	Future
1	WINN RIDGE	PALOMA CREEK	10	313	924
2	ARROWBROOKE	PALOMA CREEK	140	278	1,159
3	ROBSON RANCH	AGE RESTRICTED	120	262	4,435
4	SAVANNAH (DENTON COUNTY)	SAVANNAH	206	183	70
5	PALOMA CREEK (BELL ELEM)	BELL	328	174	97
6	LANTANA (ADKINS ELEM)	ADKINS	74	143	0
7	PRESERVE AT PECAN CREEK	STEPHENS	25	137	0
8	HILLSTONE POINTE	PROVIDENCE	0	134	309
9	UNION PARK	PALOMA CREEK	146	123	2,335
10	TEASLEY TRAILS	HOUSTON	101	111	62
TOTALS			1,150	1,858	9,391





# Future Lots



Top 10 Subdivisions - 4Q17 (Ranked by Future Inventory)

Rank	Subdivision	Elementary Zone	Annual Closings	VDL	Future
1	COLE RANCH	BORMAN	0	0	8,600
2	ROBSON RANCH	AGE RESTRICTED	120	262	4,435
3	UNION PARK	PALOMA CREEK	146	123	2,335
4	SANDBROCK RANCH	PALOMA CREEK	0	0	2,300
5	LAKEVIEW RANCH	HODGE	2	4	1,433
6	SPIRITAS RANCH WEST	CROSS OAKS	0	0	1,217
7	ARROWBROOKE	PALOMA CREEK	140	278	1,159
8	WINN RIDGE	PALOMA CREEK	10	313	924
9	PRAIRIE OAKS (OAK POINT)	CROSS OAKS	0	0	840
10	STARK FARMS	GINNINGS	0	0	817
TOTALS			418	980	24,060







# New Home Activity by Elementary Zone

Elementary	Annual Starts	Quarter Starts	Annual Closings	Quarter Closings	Under Construction	Inventory	Vacant Dev. Lots	Future
ADKINS	100	28	76	24	32	61	148	317
BELL	333	46	362	107	65	112	187	859
BLANTON	94	17	73	22	20	35	46	231
BORMAN	0	0	0	0	0	0	0	8,946
CROSS OAKS	63	0	135	9	1	7	0	2,748
EP RAYZOR	7	3	6	1	4	6	12	0
EVERS	45	9	30	8	13	23	105	1,464
GINNINGS	33	24	7	7	11	26	3	1,388
HAWK	20	4	13	6	18	18	9	155
HODGE	1	0	2	0	0	0	4	2,058
HOUSTON	79	9	101	20	29	42	111	62
LEE	8	7	7	0	7	7	63	408
MCNAIR	0	0	0	0	0	0	0	0
N RAYZOR	0	0	0	0	1	1	1	326
NELSON	4	4	3	1	2	3	4	0
PALOMA CREEK	354	91	353	81	137	208	715	6,948
PECAN CREEK	109	32	110	23	33	43	84	217
PROVIDENCE	13	5	11	3	10	11	218	480
RIVERA	0	0	0	0	0	0	0	243
RYAN	327	70	198	50	151	192	169	774
SAVANNAH	234	61	223	48	89	149	212	482
STEPHENS	69	24	50	14	29	39	160	91
WILSON	8	2	3	2	2	5	138	348
<b>Grand Totals*</b>	<b>1,901</b>	<b>436</b>	<b>1,763</b>	<b>426</b>	<b>654</b>	<b>988</b>	<b>2,389</b>	<b>28,545</b>

\*Table does **NOT** include age restricted communities

Highest activity in the category

Second highest activity in the category

Third highest activity in the category

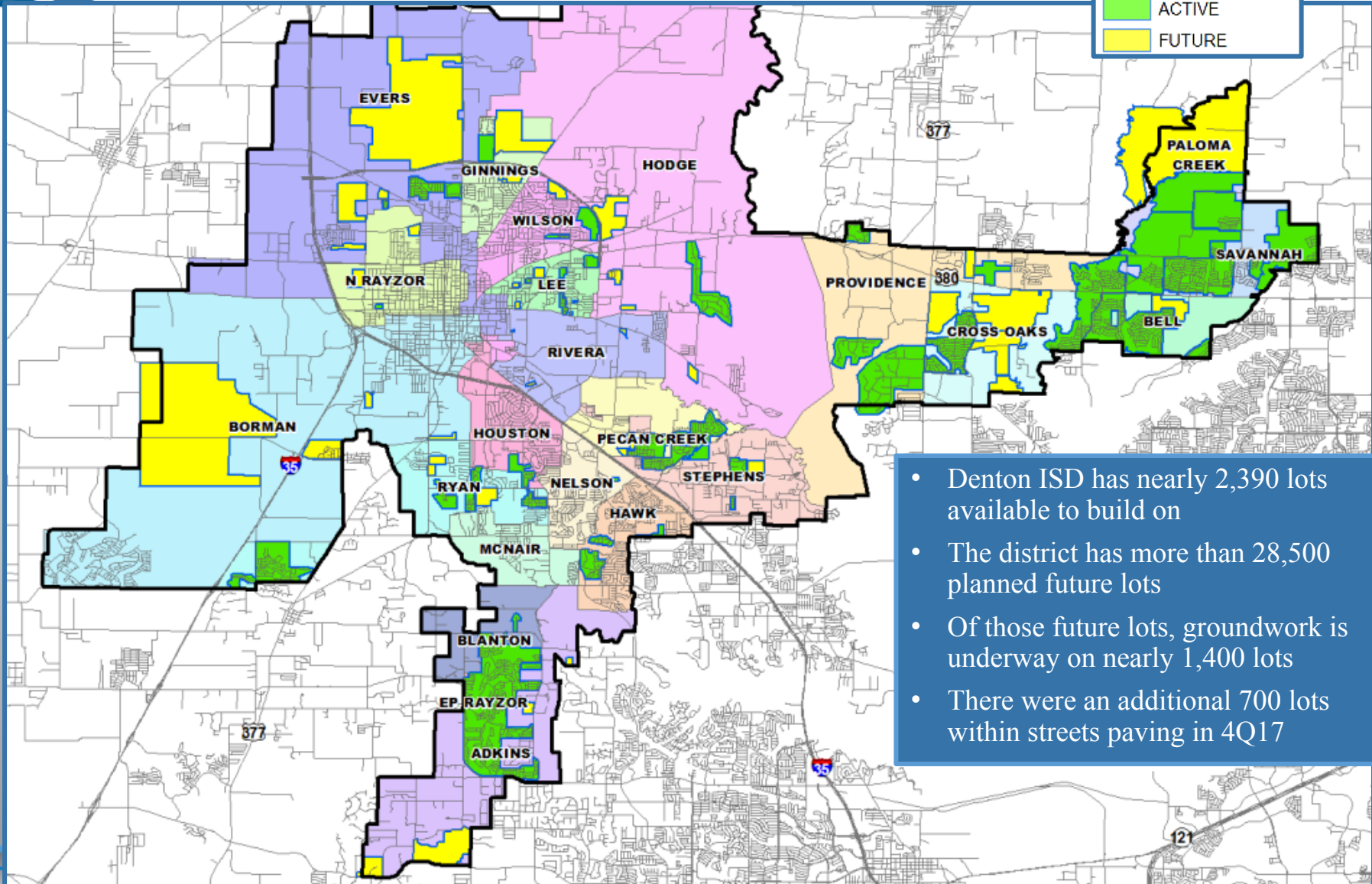




# District Housing Overview

**Development Status**

- ACTIVE
- FUTURE



- Denton ISD has nearly 2,390 lots available to build on
- The district has more than 28,500 planned future lots
- Of those future lots, groundwork is underway on nearly 1,400 lots
- There were an additional 700 lots within streets paving in 4Q17

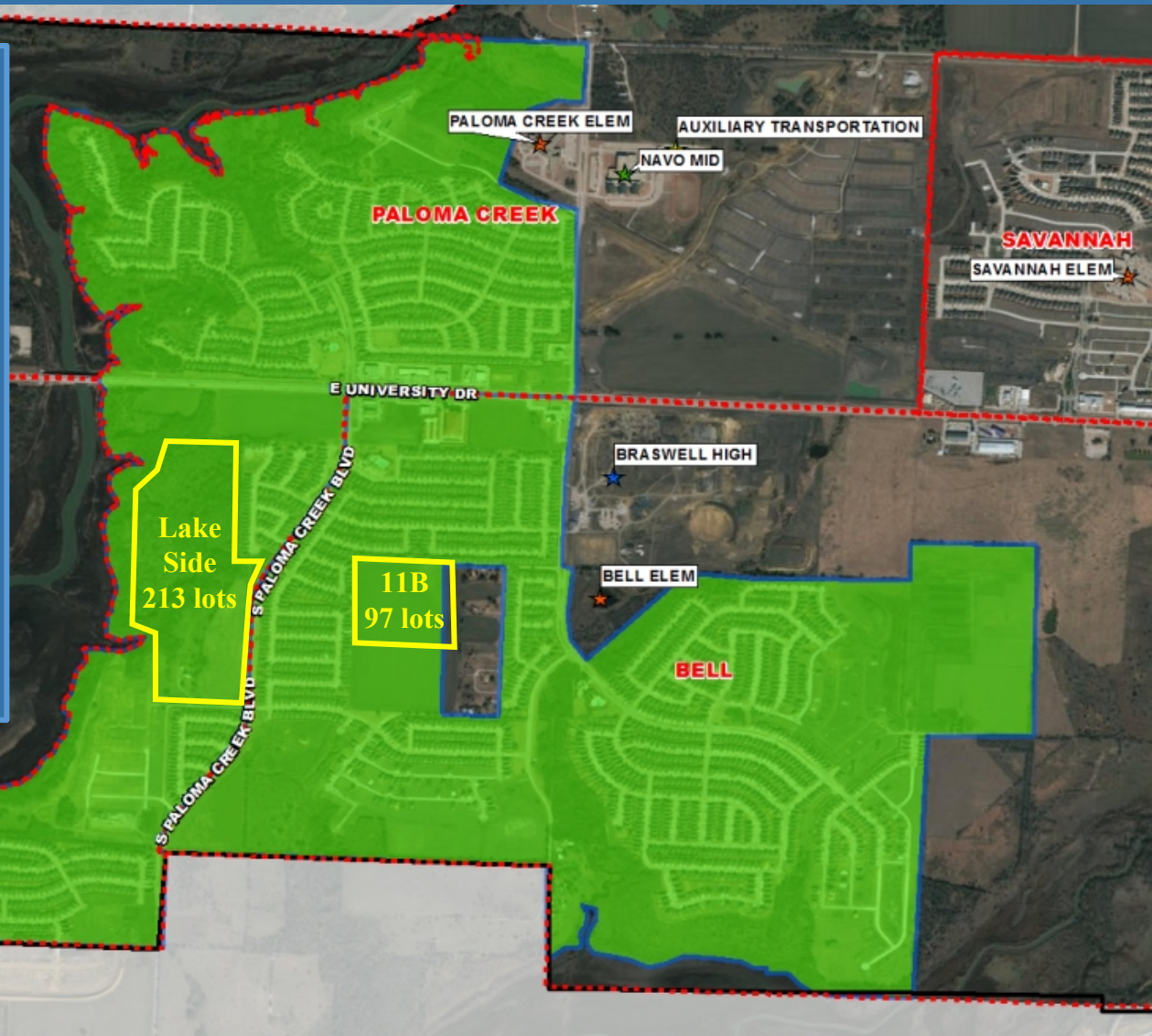


# Residential Activity

## Paloma Creek

### Paloma Creek

- Paloma Creek Elementary
  - 1,798 total lots
  - 230 future lots
  - 1,562 homes occupied
  - Groundwork on Lake side phase (213 lots) nearing completion, homes anticipated spring 2018
  - 57 homes built in 2017
- Bell Elementary
  - 3,013 total lots
  - 97 future lots
  - 174 vacant developed lots
  - 2,654 homes occupied
  - Ph. 11B (97 lots) in planning, groundwork anticipated to begin late spring 2018
  - Built 328 homes in 2017





# Residential Activity

## Union Park



### Union Park

- 2,832 total lots
- 2,335 future lots that will impact district
- 123 vacant developed lots
- 275 homes occupied
- Phase 2 B,C,D (350 lots) groundwork nearing completion, homes starting early 2018
- Groundwork underway on additional section of Union Park that is age restricted (600 lots)
- Building appx. 150 homes per year
- Paloma Creek Elementary





# Residential Activity

## Hillstone Pointe & The Landing at Little Elm



### The Landing at Little Elm

- 384 total units
- Currently under construction
- First units available late 2018/early 2019
- Providence Elementary

### Hillstone Pointe

- 443 total lots
- 309 future lots
- 134 vacant developed lots
- Phase 1 (134 lots) delivered 4Q17, homes starting early 2018
- Providence Elementary



# Future Residential Activity

## Creekside



**Creekside**

- 137 total future lots
- Preliminary plat approved January 2018
- Final plat under review with city
- Groundwork has not started
- Ryan Elementary





# Ten Year Forecast

## By Grade Level

Year (Oct.)	EE/ PRE-K	K	1st	2nd	3rd	4th	5th	6th	7th	8th	9th	10th	11th	12th	Total	Total Growth	Percent Growth
2013/14	967	2,074	2,164	2,163	2,069	2,104	2,085	2,041	1,919	1,904	1,925	1,708	1,640	1,549	26,312		
2014/15	1,063	2,068	2,099	2,178	2,166	2,082	2,133	2,075	2,052	1,973	2,042	1,873	1,665	1,551	27,020	708	2.7%
2015/16	1,143	1,954	2,143	2,088	2,190	2,152	2,115	2,154	2,128	2,094	2,091	1,985	1,756	1,566	27,559	539	2.0%
2016/17	1,128	2,066	2,044	2,194	2,181	2,231	2,219	2,159	2,202	2,175	2,293	2,084	1,967	1,685	28,628	1,069	3.9%
2017/18	1,152	2,082	2,100	2,121	2,231	2,251	2,302	2,263	2,232	2,207	2,355	2,259	2,016	1,880	29,451	823	2.9%
2018/19	1,152	2,104	2,136	2,143	2,163	2,272	2,300	2,344	2,308	2,282	2,368	2,290	2,214	1,937	30,013	562	1.9%
2019/20	1,152	2,146	2,180	2,203	2,207	2,184	2,344	2,341	2,379	2,359	2,441	2,311	2,262	2,126	30,635	622	2.1%
2020/21	1,152	2,314	2,219	2,251	2,262	2,235	2,255	2,379	2,377	2,424	2,533	2,370	2,281	2,168	31,220	585	1.9%
2021/22	1,152	2,390	2,392	2,295	2,306	2,301	2,293	2,296	2,420	2,414	2,610	2,490	2,339	2,185	31,883	663	2.1%
2022/23	1,152	2,452	2,466	2,477	2,337	2,329	2,350	2,330	2,341	2,467	2,572	2,541	2,456	2,244	32,514	631	2.0%
2023/24	1,152	2,551	2,513	2,541	2,522	2,373	2,381	2,390	2,370	2,374	2,625	2,514	2,476	2,345	33,127	613	1.9%
2024/25	1,152	2,590	2,613	2,575	2,577	2,551	2,425	2,422	2,429	2,414	2,533	2,559	2,464	2,373	33,677	550	1.7%
2025/26	1,152	2,666	2,643	2,673	2,622	2,610	2,607	2,470	2,481	2,481	2,569	2,471	2,478	2,363	34,286	609	1.8%
2026/27	1,152	2,679	2,737	2,709	2,726	2,656	2,668	2,652	2,512	2,532	2,640	2,505	2,409	2,373	34,950	664	1.9%
2027/28	1,152	2,746	2,757	2,800	2,745	2,761	2,712	2,707	2,697	2,562	2,694	2,557	2,425	2,308	35,623	673	1.9%

\*Yellow box = largest grade per year

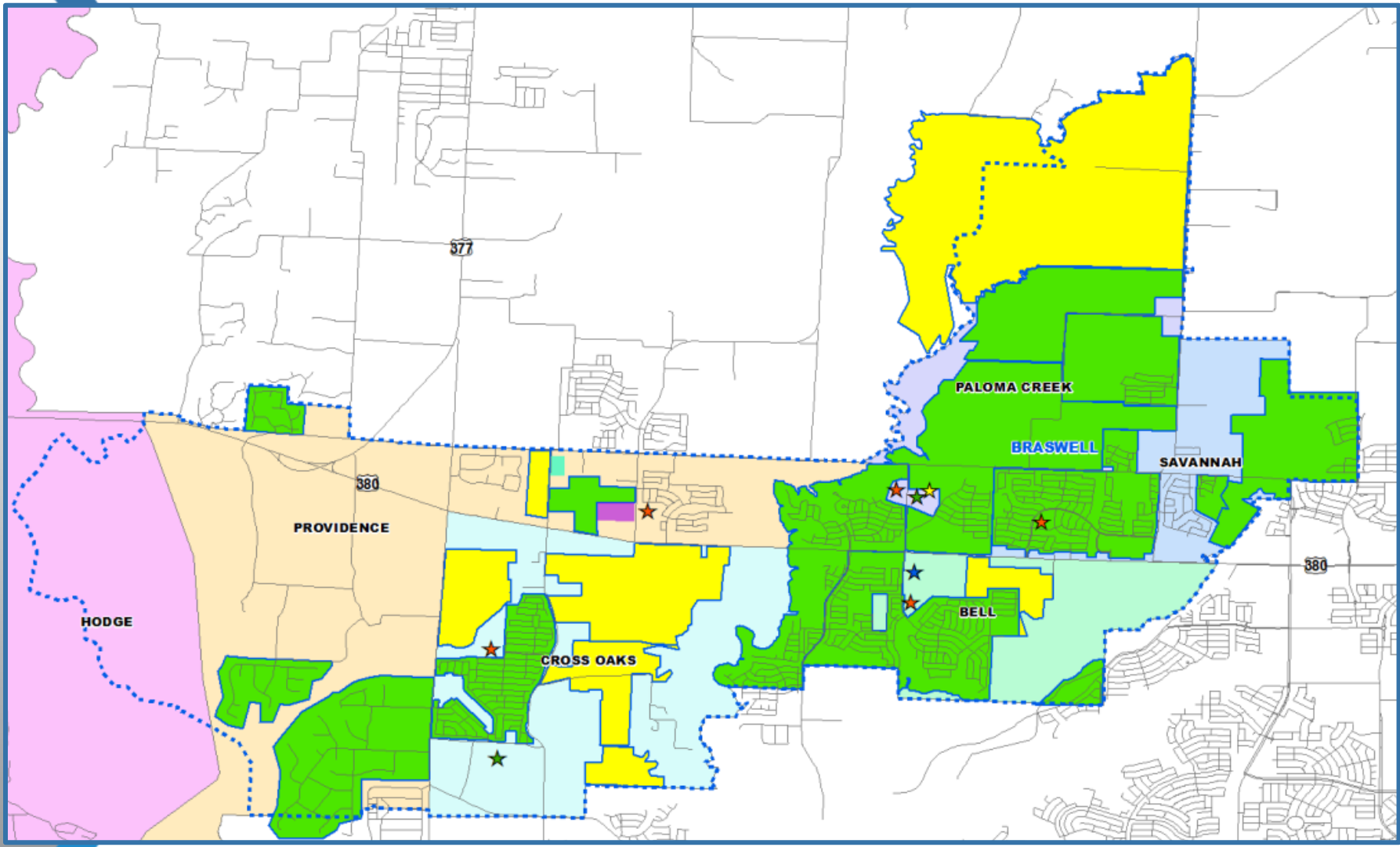
\*Green box = second largest grade per year

- Denton ISD will enroll more than 31,000 students by 2020
- 5 year growth = 3,063 students
- 2022/23 enrollment = 32,514 students
- 10 year growth = 6,172 students
- 2027/28 enrollment = 35,623 students





# Braswell High School Zone





# Vertical Zones- Ten Year Forecast

## Braswell High School

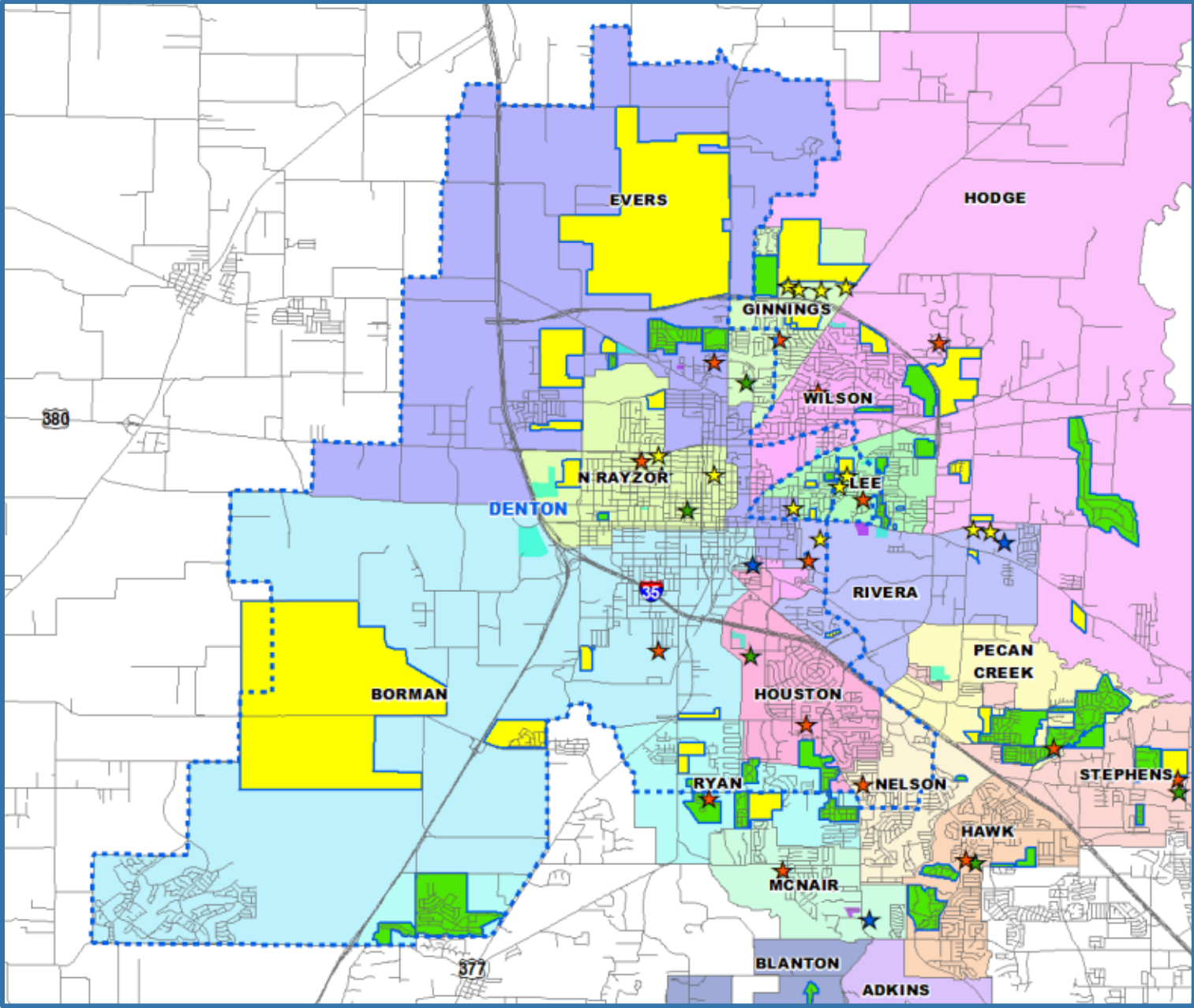
Campus Name	Capacity	HISTORY		ENROLLMENT PROJECTIONS									
		2016/17	Current 2017/18	2018/19	2019/20	2020/21	2021/22	2022/23	2023/24	2024/25	2025/26	2026/27	2027/28
Bell Elementary School	740	662	801	860	887	885	894	897	910	920	939	943	952
Cross Oaks Elementary School	740	734	724	711	727	765	819	889	927	979	1,045	1,110	1,155
Paloma Creek Elementary School	740	502	658	752	845	960	1,077	1,176	1,272	1,366	1,454	1,552	1,683
Providence Elementary School	740	406	417	431	480	506	534	544	571	580	592	602	613
Savannah Elementary School	740	700	721	748	790	815	847	890	914	938	950	955	954
<b>ELEMENTARY TOTALS</b>	3,700	3,004	3,321	3,502	3,729	3,931	4,171	4,396	4,594	4,783	4,980	5,162	5,357
Elementary Absolute Change		353	317	181	227	202	240	225	198	189	197	182	195
Elementary Percent Change		13.32%	10.55%	5.45%	6.48%	5.42%	6.11%	5.39%	4.50%	4.11%	4.12%	3.65%	3.78%
Navo Middle School	1,181	1,372	938	1,057	1,167	1,310	1,321	1,331	1,310	1,325	1,346	1,356	1,291
Rodriguez Middle School	1,323	0	662	728	729	745	775	850	928	1,004	1,087	1,202	1,347
<b>MIDDLE SCHOOL TOTALS</b>	2,504	1,372	1,600	1,785	1,896	2,055	2,096	2,181	2,238	2,329	2,433	2,558	2,638
Middle School Absolute Change		161	228	185	111	159	41	85	57	91	104	125	80
Middle School Percent Change		13.29%	16.62%	11.56%	6.22%	8.39%	2.00%	4.06%	2.61%	4.07%	4.47%	5.14%	3.13%
Braswell High School		1,220	1,760	2,055	2,391	2,551	2,823	3,017	3,130	3,237	3,272	3,371	3,442
<b>HIGH SCHOOL TOTALS</b>		1,220	1,760	2,055	2,391	2,551	2,823	3,017	3,130	3,237	3,272	3,371	3,442
High School Absolute Change		1,220	540	295	336	160	272	194	113	107	35	99	71
High School Percent Change			44.26%	16.76%	16.35%	6.69%	10.66%	6.87%	3.75%	3.42%	1.08%	3.03%	2.11%
<b>Braswell High Zone Totals</b>	6,204	5,596	6,681	7,342	8,016	8,537	9,090	9,594	9,962	10,349	10,685	11,091	11,437
Zone Absolute Change		1,734	1,085	661	674	521	553	504	368	387	336	406	346
Zone Percent Change		44.9%	19.4%	9.9%	9.2%	6.5%	6.5%	5.5%	3.8%	3.9%	3.2%	3.8%	3.1%

\*Yellow box = over stated capacity





# Denton High School Zone



# Vertical Zones- Ten Year Forecast

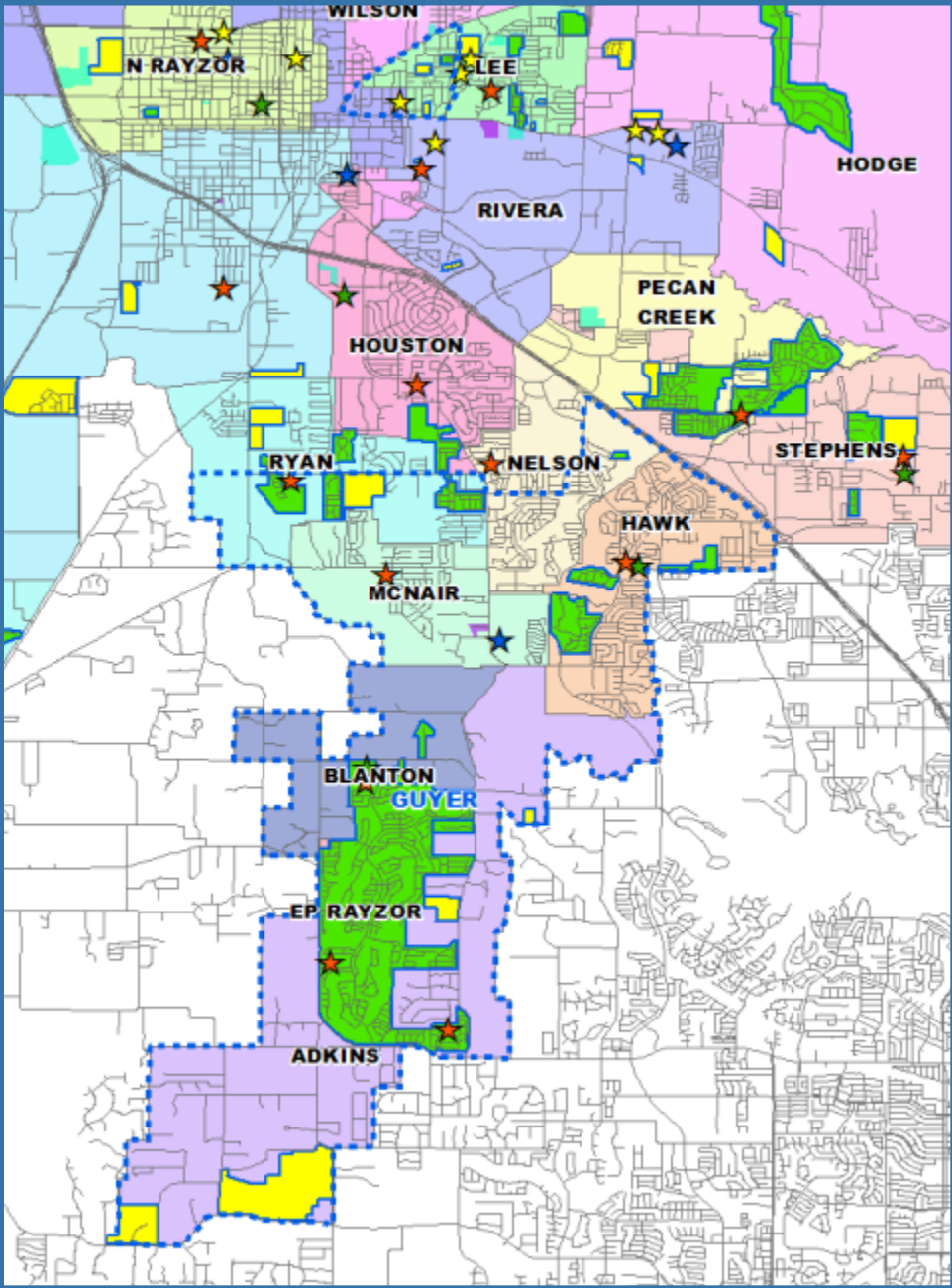
## Denton High School

Campus Name	Capacity	HISTORY	Current	ENROLLMENT PROJECTIONS									
		2016/17	2017/18	2018/19	2019/20	2020/21	2021/22	2022/23	2023/24	2024/25	2025/26	2026/27	2027/28
Borman Elementary School	740	470	470	462	471	492	536	590	659	706	751	790	820
Evers Park Elementary School	740	578	574	585	605	598	618	636	676	722	777	823	871
Sam Houston Elementary School	740	592	584	599	607	624	616	630	643	654	656	655	651
Lee Elementary School	740	597	641	646	649	651	668	667	666	676	691	692	692
Newton Rayzor Elementary School	740	651	624	604	581	580	573	584	597	606	619	625	628
Ryan Elementary School	740	642	673	705	725	759	800	825	858	896	928	945	948
<b>ELEMENTARY TOTALS</b>	4,440	3,530	3,566	3,601	3,638	3,704	3,811	3,932	4,099	4,260	4,422	4,530	4,610
Elementary Absolute Change		67	36	35	37	66	107	121	167	161	162	108	80
Elementary Percent Change		1.93%	1.02%	0.98%	1.03%	1.81%	2.89%	3.18%	4.25%	3.93%	3.80%	2.44%	1.77%
Calhoun Middle School	1,268	711	729	733	726	719	724	746	751	755	761	788	817
McMath Middle School	1,181	754	781	810	846	880	898	900	923	936	977	1,044	1,108
<b>MIDDLE SCHOOL TOTALS</b>	2,449	1,465	1,510	1,543	1,572	1,599	1,622	1,646	1,674	1,691	1,738	1,832	1,925
Middle School Absolute Change		45	45	33	29	27	23	24	28	17	47	94	93
Middle School Percent Change		3.17%	3.07%	2.19%	1.88%	1.72%	1.44%	1.48%	1.70%	1.02%	2.78%	5.41%	5.08%
Denton High School	2,460	2,052	2,036	2,038	2,043	2,081	2,092	2,144	2,169	2,200	2,229	2,251	2,304
<b>HIGH SCHOOL TOTALS</b>	2,460	2,052	2,036	2,038	2,043	2,081	2,092	2,144	2,169	2,200	2,229	2,251	2,304
High School Absolute Change		-272	-16	2	5	38	11	52	25	31	29	22	53
High School Percent Change		-11.70%	-0.78%	0.10%	0.25%	1.86%	0.53%	2.49%	1.17%	1.43%	1.32%	0.99%	2.35%
<b>Denton High Zone Totals</b>	9,349	7,047	7,112	7,182	7,253	7,384	7,525	7,722	7,942	8,151	8,389	8,613	8,839
Zone Absolute Change		-160	65	70	71	131	141	197	220	209	238	224	226
Zone Percent Change		-2.2%	0.9%	1.0%	1.0%	1.8%	1.9%	2.6%	2.8%	2.6%	2.9%	2.7%	2.6%

\*Yellow box = over stated capacity



# Guyer High School Zone



# Vertical Zones- Ten Year Forecast

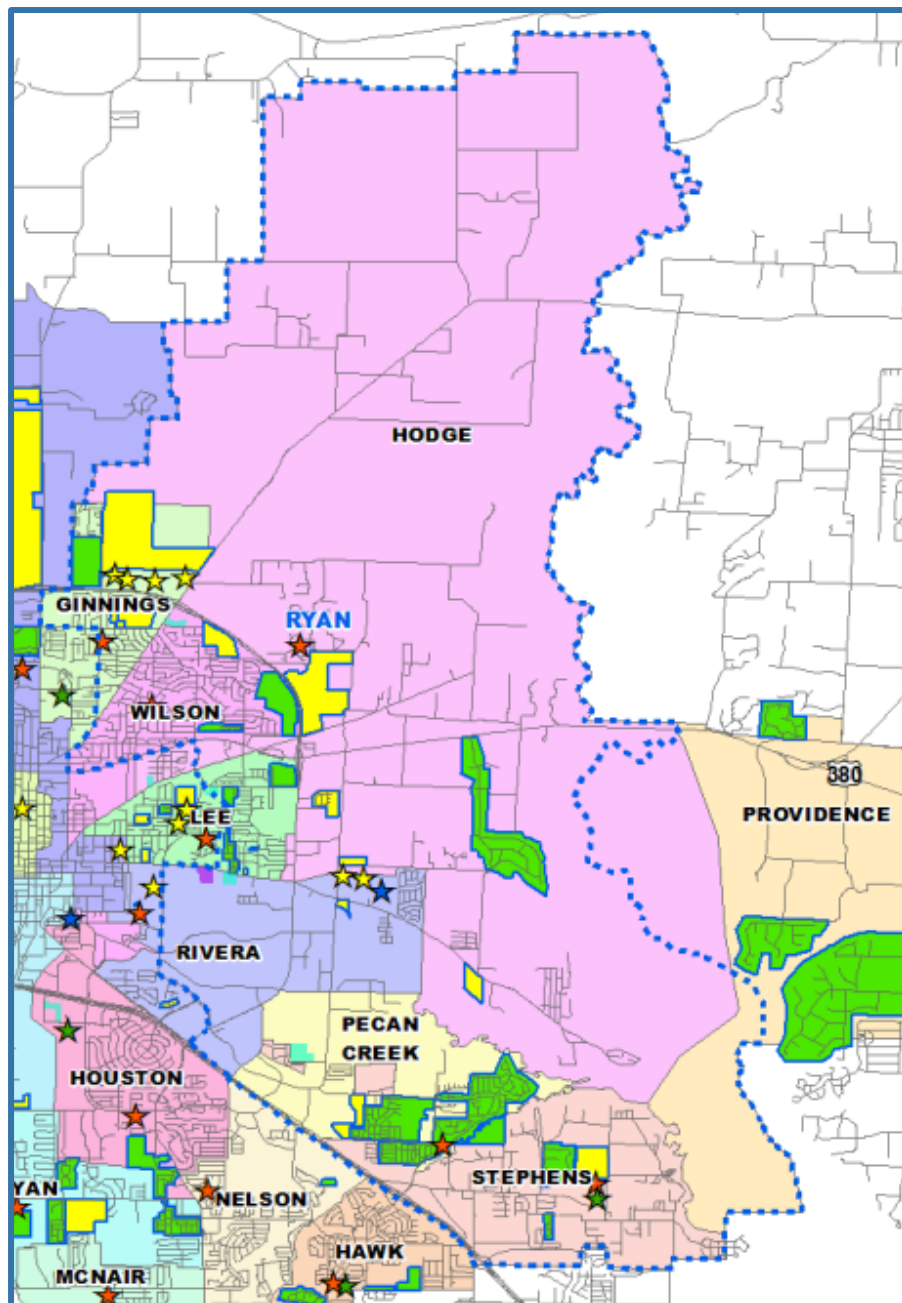
## Guyer High School

Campus Name	Capacity	HISTORY	Current	ENROLLMENT PROJECTIONS									
		2016/17	2017/18	2018/19	2019/20	2020/21	2021/22	2022/23	2023/24	2024/25	2025/26	2026/27	2027/28
Adkins Elementary School	740	381	386	377	388	389	396	398	408	418	427	428	431
Blanton Elementary School	740	493	489	485	459	465	465	489	491	496	495	491	491
E P Rayzor Elementary School	740	422	395	379	363	360	359	368	365	369	375	375	372
Hawk Elementary School	740	692	672	635	587	556	562	560	572	568	579	581	577
McNair Elementary School	740	587	533	515	475	463	461	455	462	468	475	476	479
Nelson Elementary School	740	637	636	593	577	561	545	525	531	536	537	539	544
<b>ELEMENTARY TOTALS</b>	4,440	3,212	3,111	2,984	2,849	2,794	2,788	2,795	2,829	2,855	2,888	2,890	2,894
Elementary Absolute Change		42	-101	-127	-135	-55	-6	7	34	26	33	2	4
Elementary Percent Change		1.32%	-3.14%	-4.08%	-4.52%	-1.93%	-0.21%	0.25%	1.22%	0.92%	1.16%	0.07%	0.14%
Crownover Middle School	1,181	946	926	933	934	921	851	819	770	765	730	740	767
Harpool Middle School	1,181	983	990	933	944	884	854	799	774	741	759	769	790
<b>MIDDLE SCHOOL TOTALS</b>	2,362	1,929	1,916	1,866	1,878	1,805	1,705	1,618	1,544	1,506	1,489	1,509	1,557
Middle School Absolute Change		8	-13	-50	12	-73	-100	-87	-74	-38	-17	20	48
Middle School Percent Change		0.42%	-0.67%	-2.61%	0.64%	-3.89%	-5.54%	-5.10%	-4.57%	-2.46%	-1.13%	1.34%	3.18%
John Guyer High School	2,140	2,543	2,523	2,591	2,618	2,659	2,717	2,649	2,613	2,514	2,404	2,309	2,239
<b>HIGH SCHOOL TOTALS</b>	2,140	2,543	2,523	2,591	2,618	2,659	2,717	2,649	2,613	2,514	2,404	2,309	2,239
High School Absolute Change		85	-20	68	27	41	58	-68	-36	-99	-110	-95	-70
High School Percent Change		3.46%	-0.79%	2.70%	1.04%	1.57%	2.18%	-2.50%	-1.36%	-3.79%	-4.38%	-3.95%	-3.03%
<b>Guyer High Zone Totals</b>	8,942	7,684	7,550	7,441	7,345	7,258	7,210	7,062	6,986	6,875	6,781	6,708	6,690
Zone Absolute Change		135	-134	-109	-96	-87	-48	-148	-76	-111	-94	-73	-18
Zone Percent Change		1.8%	-1.7%	-1.4%	-1.3%	-1.2%	-0.7%	-2.1%	-1.1%	-1.6%	-1.4%	-1.1%	-0.3%





# Ryan High School Zone



# Vertical Zones- Ten Year Forecast

## Ryan High School

Campus Name	Capacity	HISTORY	Current	ENROLLMENT PROJECTIONS									
		2016/17	2017/18	2018/19	2019/20	2020/21	2021/22	2022/23	2023/24	2024/25	2025/26	2026/27	2027/28
Ginnings Elementary School	740	596	568	563	563	571	576	587	607	639	667	688	717
Hodge Elementary School	740	658	582	560	558	563	580	598	634	659	692	718	739
Olive Stephens Elementary School	740	464	446	435	448	448	450	466	465	470	477	477	477
Pecan Creek Elementary School	740	691	703	687	690	712	744	760	776	785	803	823	842
Rivera Elementary School	740	609	604	603	597	610	631	635	635	637	646	648	653
Wilson Elementary School	740	582	600	597	606	617	640	656	656	657	660	653	646
<b>ELEMENTARY TOTALS</b>	4,440	3,600	3,503	3,445	3,462	3,521	3,621	3,702	3,773	3,847	3,945	4,007	4,074
Elementary Absolute Change		-164	-97	-58	17	59	100	81	71	74	98	62	67
Elementary Percent Change		-4.36%	-2.69%	-1.66%	0.49%	1.70%	2.84%	2.24%	1.92%	1.96%	2.55%	1.57%	1.67%
Bette Myers Middle School	1,323	890	772	829	831	822	796	798	795	831	848	849	864
Strickland Middle School	1,334	859	882	889	880	877	889	873	861	886	902	926	960
<b>MIDDLE SCHOOL TOTALS</b>	2,657	1,749	1,654	1,718	1,711	1,699	1,685	1,671	1,656	1,717	1,750	1,775	1,824
Middle School Absolute Change		-55	-95	64	-7	-12	-14	-14	-15	61	33	25	49
Middle School Percent Change		-3.05%	-5.43%	3.87%	-0.41%	-0.70%	-0.82%	-0.83%	-0.90%	3.68%	1.92%	1.43%	2.76%
Fred Moore High School		61	48	48	48	48	48	48	48	48	48	48	48
Ryan High School	2,340	2,061	2,054	1,988	1,951	1,924	1,855	1,866	1,911	1,841	1,839	1,859	1,862
<b>HIGH SCHOOL TOTALS</b>	2,340	2,122	2,102	2,036	1,999	1,972	1,903	1,914	1,959	1,889	1,887	1,907	1,910
High School Absolute Change		-395	-20	-66	-37	-27	-69	11	45	-70	-2	20	3
High School Percent Change		-15.69%	-0.94%	-3.14%	-1.82%	-1.35%	-3.50%	0.58%	2.35%	-3.57%	-0.11%	1.06%	0.16%
<b>Ryan High Zone Totals</b>	9,437	7,471	7,259	7,199	7,172	7,192	7,209	7,287	7,388	7,453	7,582	7,689	7,808
Zone Absolute Change		-614	-212	-60	-27	20	17	78	101	65	129	107	119
Zone Percent Change		-7.6%	-2.8%	-0.8%	-0.4%	0.3%	0.2%	1.1%	1.4%	0.9%	1.7%	1.4%	1.5%

\*Yellow box = over stated capacity



# Alternate Campus- Ten Year Forecast

Campus Name	Capacity	HISTORY	Current	ENROLLMENT PROJECTIONS									
		2016/17	2017/18	2018/19	2019/20	2020/21	2021/22	2022/23	2023/24	2024/25	2025/26	2026/27	2027/28
Ann Windle School For Young Child	740	362	392	392	392	392	392	392	392	392	392	392	392
Gonzalez School For Young Child	740	346	340	340	340	340	340	340	340	340	340	340	340
Denton J J A E P		3	5	5	5	5	5	5	5	5	5	5	5
Juvenile Detention CTR		51	54	54	54	54	54	54	54	54	54	54	54
Lester Davis School		68	58	58	58	58	58	58	58	58	58	58	58
<b>ALTERNATIVE SCHOOL TOTALS</b>		122	117	117	117	117	117	117	117	117	117	117	117
<b>DISTRICT TOTALS</b>	35,412	28,628	29,451	30,013	30,635	31,220	31,883	32,514	33,127	33,677	34,286	34,950	35,623
District Absolute Change		1,069	823	562	622	585	663	631	613	550	609	664	673
District Percent Change		3.9%	2.9%	1.9%	2.1%	1.9%	2.1%	2.0%	1.9%	1.7%	1.8%	1.9%	1.9%







# Summary

- Denton's unemployment rate is currently below 3%.
- The average new home sale price within Denton ISD in 2017 was \$307,123.
- In 2017, Denton ISD started more than 2,000 homes.
- The Bell and Paloma Creek Elementary zones accounted for more than 40% of the total district annual closings in 2017.
- Denton ISD can expect an increase of approximately 3,060 students during the next 5 years.
- 2022/23 enrollment projection: 32,514 students.
- DISD is projected to enroll more than 35,623 students for the 2027/28 school year.