

**FAMILY OWNED. AMERICAN MADE.**



# CLASSIC MAT

RSP600  
RSP625

*Athletes, coaches, and officials prefer the look, feel, and comfort of the Classic Mat.*



## SUPERIOR DURABILITY

*Made from closed-cell rubber nitrile foam core, the longest lasting foam available.*

*With two complete wrestling surfaces, the life of your mat is doubled.*

## LONG-TERM INVESTMENT

*Coated on all sides with our exclusive #457 poly-vinyl paint.*

*The easiest to clean and disinfect.*

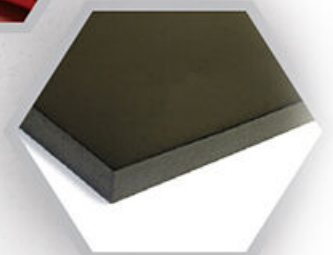
*Reconditioning available for extended use.*

*Available in 16 standard Resilite vinyl-coating colors.*

## OUTSTANDING PROTECTION

*One of the most shock-absorbing foams for its thickness.*

*Meets or exceeds the ASTM 355 impact test.*



The Official Mat Supplier to the  
NCAA® Wrestling Championships

 **RESILITE**  
The Mat Company

[www.resilite.com](http://www.resilite.com) | 1.800.843.6287

**Resilite Independent Sales Pro.**

200 Point Township Drive  
Northumberland, PA 17857  
United States

T: 1-800-843-6287  
F: 570-473-8988

Quote #	46277 v2
Date	09-19-2023
Price Firm For 30-Days	10-19-2023
Contact	Nick Simmons

**Prepared for**

Livonia Stevenson High School  
Arnold Muscat  
33500 6 Mile Rd  
Livonia, MI 48152  
United States

T: 2482079874  
E: amuscat@livoniapublicschools.org

**Ship to**

Livonia Stevenson High School  
Arnold Muscat  
33500 6 Mile Rd  
Livonia 48152  
United States

T: 2482079874  
E: amuscat@livoniapublicschools.org

[ACCEPT QUOTE](#)

## Classic Mat

### Classic Mat

Item	Qty	Price	Total
<b>Classic RSP-625</b>	4000	\$8.85	<b>\$35,400.00</b>


1.25 " Thick / Meets ASTM F355 Shock Absorbency / Includes: Straps, Tubes and 3-year Warranty

**Maximum longevity:** Resilite Classic Mats are double-sided, giving you two complete wrestling surfaces and doubling the life of the mat. They're coated on all sides with our exclusive #457 poly-vinyl coating leaving no exposed foam, and can be reconditioned for extended use.

**Best Impact Protection, Inch for Inch:** The Resilite "G-Max Approved" seal indicates that our Classic Mats meet or exceed the ASTM 355 impact test, and our closed-cell rubber nitrile foam core is one of the most shock-absorbing foams for its thickness.

**Long-term, high-value investment:** The closed-cell rubber nitrile foam core is the longest-lasting foam available. With their higher density and greater thickness, Resilite Classic Mats last up to twice as long as standard lightweight mats.

Resilite (Code: RSP-625)

 [Resilite\\_Classic\\_RSP625\\_Specifications.pdf](#) (348 KB)

Size: Custom Size (Square Foot)

## Top Side Lines (Classic Mats Have a Top and Bottom Wrestling Area)

Item	Qty	Price	Total
<b>Top Side Wrestling Mat Markings</b>	1	\$0.00	<b>\$0.00</b>

Code: MRKG.

Included Markings: Practice Circles with Competition Lines (MRKG005)

### Bottom Side Lines

Item	Qty	Price	Total
Bottom Side Wrestling Mat Markings & Options	1	\$0.00	\$0.00
Code: MRKG.			
Included Markings : Practice Circles with Competition Lines (MRKG005)			


### Summary

ACCEPT QUOTE

### Cost Breakdown

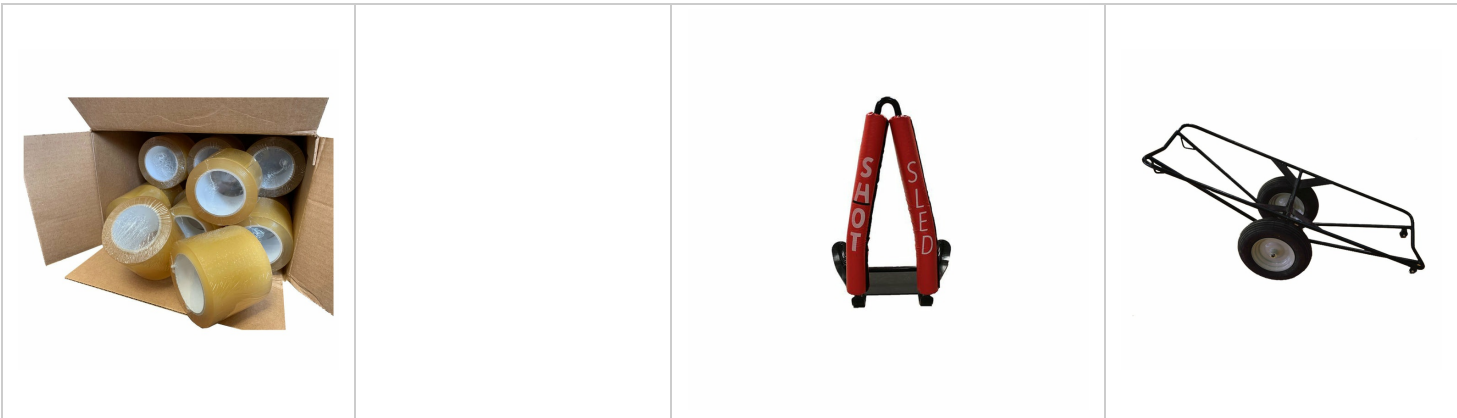
Type	One-Time Fees
Product	\$35,400.00
Shipping and Handling	\$3,000.00
MI Sales Tax	\$2,304.00
Total	\$40,704.00 USD

### Quote Attachments

 [Stevenson\\_Classic\\_Opt1.pdf](#) (301 KB)

Layout Information:: classic custom  
Shipping Destination:: School

### Mat Cleaners and Accessories



<a href="#">Shop Mat Tape</a>	<a href="#">Shop Mat Cleaning Supplies</a>	<a href="#">Shop ShotSled</a>	<a href="#">Shop Resi-Wheelers</a>
-------------------------------	--	-------------------------------	------------------------------------

## Current Lead Time

With the current global supply chain issues and demand, Resilite is anticipating a 20-26 week lead time on most products.

## Resilite Shipping

Resilite does not provide inside delivery. All quotes are curbside delivery unless otherwise noted on the quote.

## Resilite Classic Mat Disclaimer

Resilite Classic Mats will be designed and manufactured as close as possible to the specifications and dimensions that were provided to Resilite at the time this layout was produced. Because of the characteristics of Classic Mats, Resilite will manufacture the mat or mat sections with 4% - 5% of oversize. This oversize is based on many factors and is required because of the Classic Mat manufacturing process and shrinkage. Resilite Classic Mats CAN NOT and WILL NOT be manufactured to exact and precise measurements. Classic Mats will continue to shrink and require 8 to 12 months before the full curing process is complete.

## Possible Shrinkage - Plan Accordingly

All foam wrestling mats are subject to expansion and contraction due to environmental and physical conditions. Vinyl-coated mats are subject to shrinkage. Therefore, mats are oversized to compensate for this shrinkage. Resilite guarantees the mats to be within a +/- 4% tolerance.

**CURING:** Resilite Classic Mats WILL NEED TO BE CURED for no less than two (2) weeks.

NOTE: Mats should be unrolled and laid flat for seven (7) days on each side.

DO NOT leave a new mat or newly reconditioned mat rolled for an extended period of time.

## Classic Mat Warranty

### New Mats:

3-Year Limited Warranty on New Vinyl-Coated Mats

### Reconditioned Mats:

1-Year Limited Warranty on Factory-Reconditioned Vinyl-Coated Mats

Contact us or reference the Care and Handling Instructions booklet for more information.

**\*\* PLEASE NOTE: This Quote is a firm estimate based on the information and specifications that were provided at the time of this quote.**

IMPORTANT: All Resilite Mats are custom manufactured for each order. Since these are customized products in size, color, and markings; **Resilite requires that any private entity or organization must submit pre-payment BEFORE the order will be started.** Pre-payment terms may be worked out and agreed upon prior to placing the order. If pre-payment terms are agreed upon, the initial deposit amount will be considered approval to begin production and will be deemed NON-REFUNDABLE, if the order is canceled or not paid in full. However, All pre-payment terms will include payment in full ( 100% of total order including delivery ) BEFORE the mats will be shipped or delivered. Resilite will not produce or fulfill orders that have not been paid in Full.

Once Resilite receives an approved School Purchase Order or Private Entity Pre-payment, an Order Acknowledgement will be emailed to you. Orders will be placed on HOLD and Production will not begin until a signed Order Acknowledgement is received at Resilite. All payments should be made payable to Resilite Sports Products, Inc.

Mail to Resilite Sports Products, Inc. **Resilite Sports Products / 200 Point Township Drive / Northumberland PA 17857**