

Franklin High School

QTY	DESCRIPTION	SEATS	RISE	SPAN
Bank #1	12 Row Friction Power Wall Attached 108'-7 1/2" W/ 10" Excel Seat Module -00 TBE	722	11.5	22
4	12 Row Foot Level Aisles W/ Self-Storing F-Rail			
4	12 Row Intermediate Steps			
7	1 Row Recoverable 3'-0 1/4" Notchout			
Bank #2	12 Row Friction Power Wall Attached 108'-7 1/2" W/ 10" Excel Seat Module -00 TBE	722	11.5	22
4	12 Row Foot Level Aisles W/ Self-Storing F-Rail			
4	12 Row Intermediate Steps			
8	1 Row Recoverable 3'-0 1/4" Notchout			

NOTES:

TOTAL SEATS

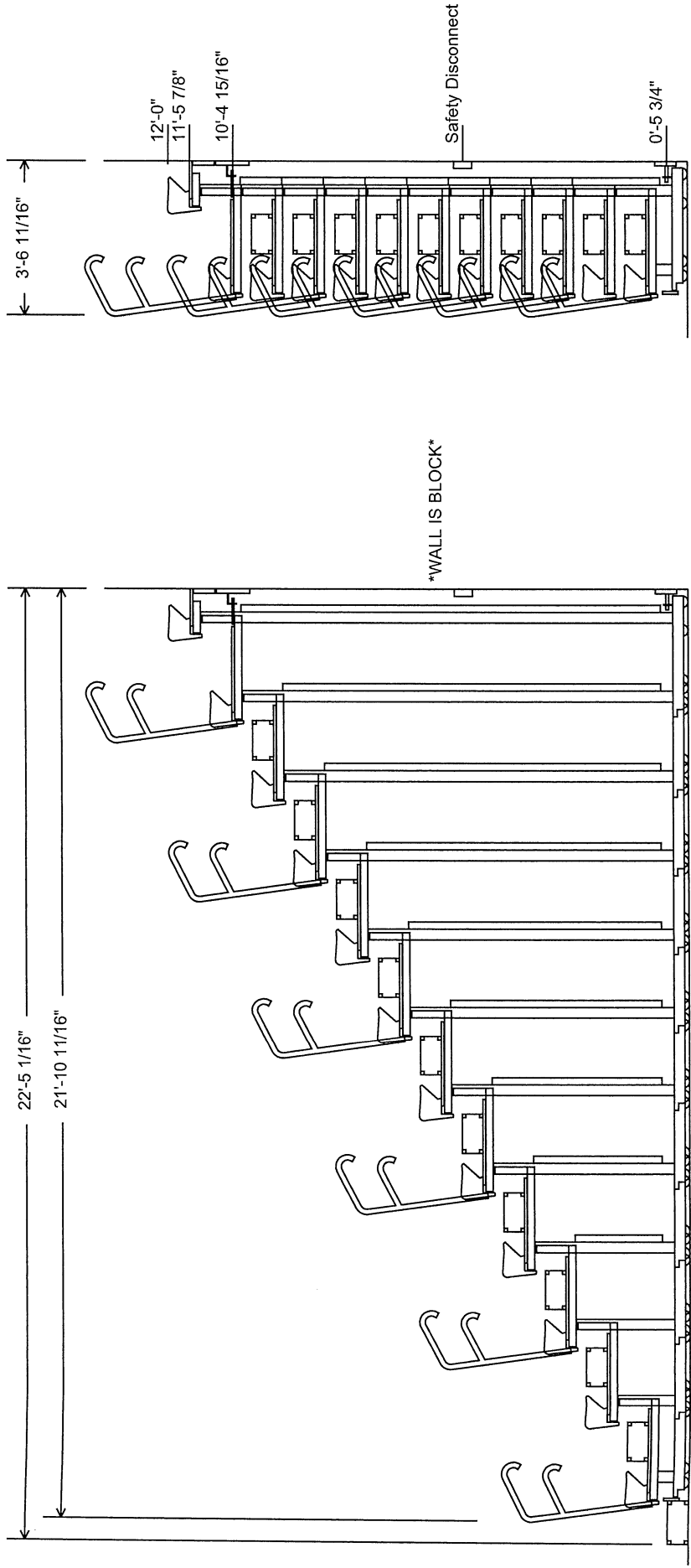
1444



5981 East Cork Street, PO Box 2107, Kalamazoo, MI 49003-2107
telephone (269) 349-1521 fax (269) 349-6530

Franklin High School

Bank 1 - 108'-7 1/2" Friction Power
 Building Code: IBC 2015
 12 Row - 22 Span - 11.5 Rise - Wall Attached
 722 seats (EM10)
 11'-1 15/16" Court To Step Dimension
 11'-8 1/4" Court To First Row Dimension



Side Elevation View A1



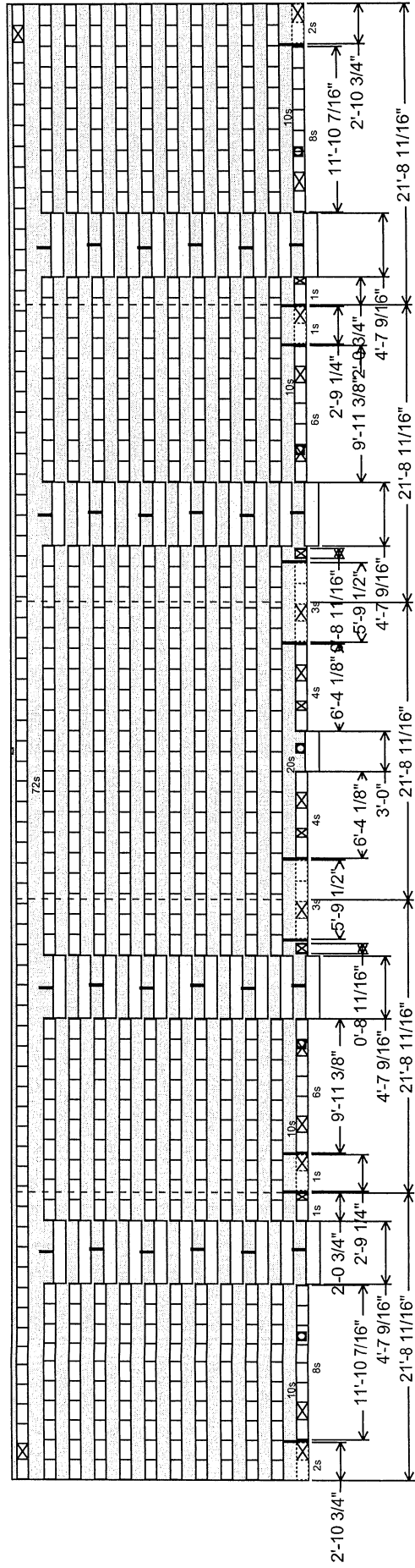
5981 East Cork Street, PO Box 2107, Kalamazoo, MI 49003-2107
 telephone (269) 349-1521 fax (269) 349-6530

Drawings produced by this program are only as good as the information provided. These drawings are PRELIMINARY only.
 All drawings created are subject to Interkal approval for design and construction capability.
 Printed: January 9, 2018 v2.2.0

Franklin High School

Bank 2 - 108'-7 1/2" Friction Power
 Building Code: IBC 2015
 109'-0 1/2" Clear Dimension
 12 Row - 22 Span - 11.5 Rise
 722 seats (EM10)

- POWER REQUIREMENTS:**
1. Wiring and non-fusible safety switch(es) suitable for the line voltage to be provided by electrical contractor or others with branch circuit protection to each not exceeding 15 amps.
 2. Branch circuit protection devices by others to be accessible when platforms are closed.
 3. Verify electrical information:
 Circuit 3 Phase, 208-230 Volts, 60 Hertz
 Each 1/2 Horse Power Motor: Draws 2.0-2.2 amps. Full Load. Motors run simultaneously.
 4. Junction box(es) by electrical contractor to be mounted at locations TBD, 5' AFF.
 Typical location shall be at section joints.

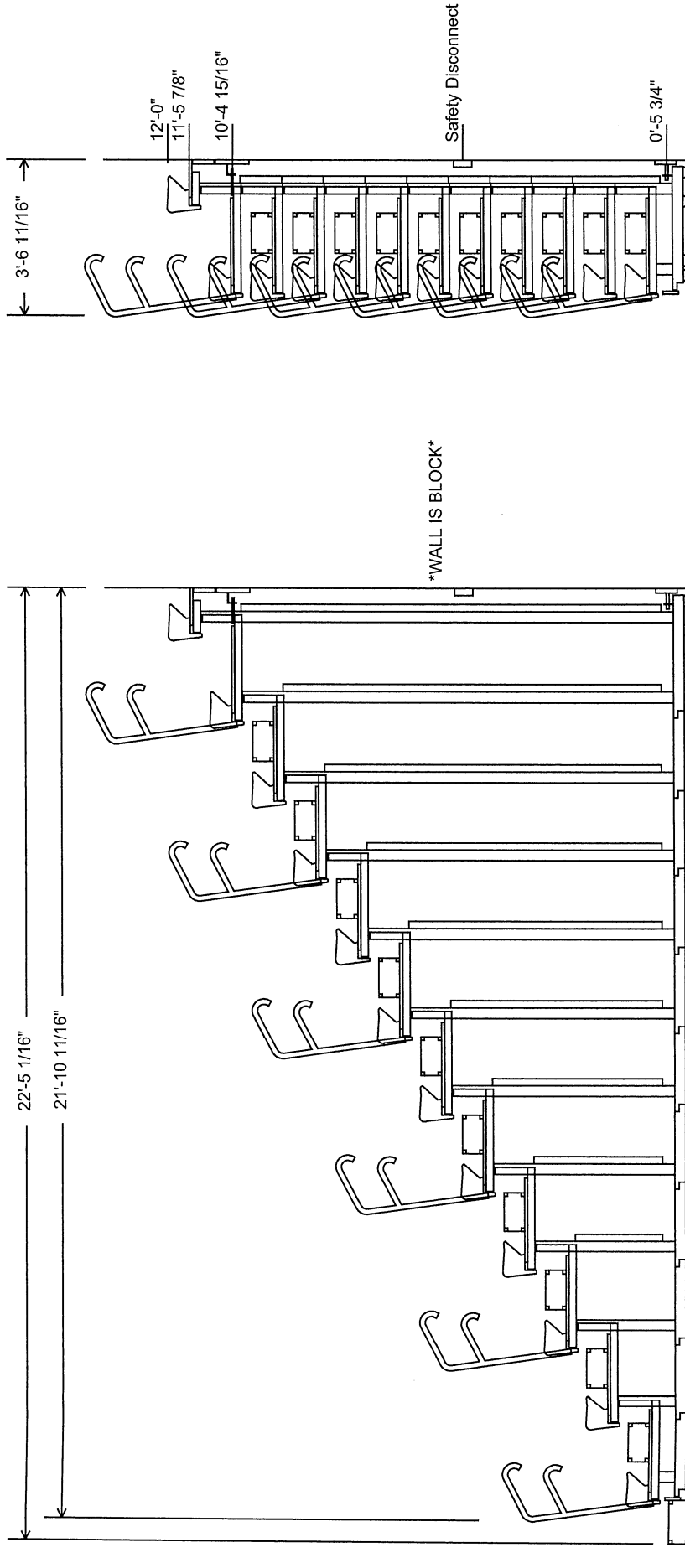


5981 East Cork Street, PO Box 2107, Kalamazoo, MI 49003-2107
 telephone (269) 349-1521 fax (269) 349-6530

Drawings produced by this program are only as good as the information provided. These drawings are PRELIMINARY only.
 All drawings created are subject to Interkal approval for design and construction capability.
 Printed: January 9, 2018 v2.2.0

Franklin High School

Bank 2 - 108'-7 1/2" Friction Power
 Building Code: IBC 2015
 12 Row - 22 Span - 11.5 Rise - Wall Attached
 722 seats (EM10)
 10'-5 7/8" Court To Step Dimension
 11'-0 1/4" Court To First Row Dimension



FLOOR IS WOOD FLOATING

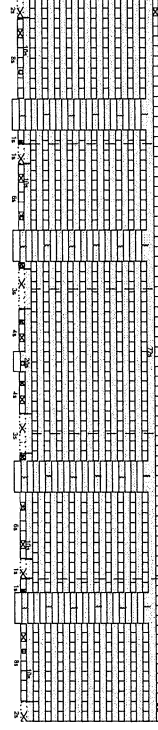
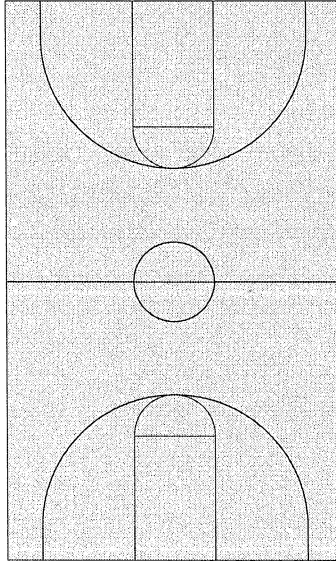
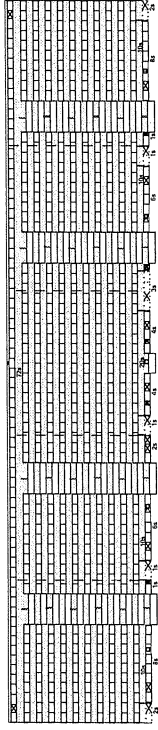
WALL IS BLOCK



5981 East Cork Street, PO Box 2107, Kalamazoo, MI 49003-2107
 telephone (269) 349-1521 fax (269) 349-6530

Drawings produced by this program are only as good as the information provided. These drawings are PRELIMINARY only.
 All drawings created are subject to Intertek approval for design and construction capability.
 Printed: January 9, 2018 v2.2.0

Franklin High School
 Gymnasium 1
 Building Code: IBC 2015



5981 East Cork Street, PO Box 2107, Kalamazoo, MI 49003-2107
 telephone (269) 349-1521 fax (269) 349-6530

Drawings produced by this program are only as good as the information provided. These drawings are PRELIMINARY only.
 All drawings created by Interkal are subject to Interkal approval for design and construction capability.
 Printed: January 9, 2016 v2.2.0