

Architect's Field Report

DATE: March 19, 2025

TIME: 3:00 PM

REPORT BY: Douglas Draeger

OBSERVATIONS:

1. The hanging bridge at the New Berlin Elementary School Playground has the rubber coating deteriorating and the metal that is exposed is corroding and has sharp rusty edges. It is recommended that the bridge portion of the playground equipment be replaced.

PHOTOS:



Location of the "Bridge" on the elementary playground.



Close-up image of deterioration and sharp rusty edges.



Close-up image of deterioration and sharp rusty edges.



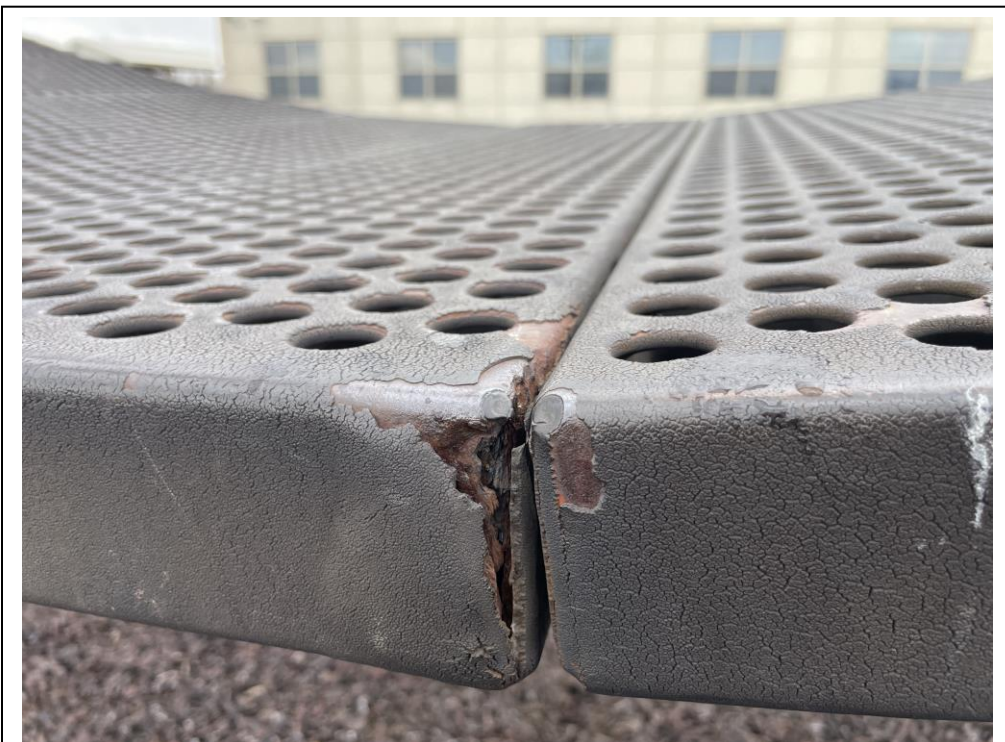
Close-up image of deterioration and sharp rusty edges.



Close-up image of deterioration and sharp rusty edges.



Close-up image of deterioration and sharp rusty edges.



Close-up image of deterioration and sharp rusty edges.



Close-up image of deterioration and sharp rusty edges.