

Bristol Public Schools

Enrollment Analysis & Projections

March 2020





Contents

- Projections Performance
- Demographic Profile
- Housing and Economic Trends
- Birth Trends and Projections
- Enrollment Trends and Projections



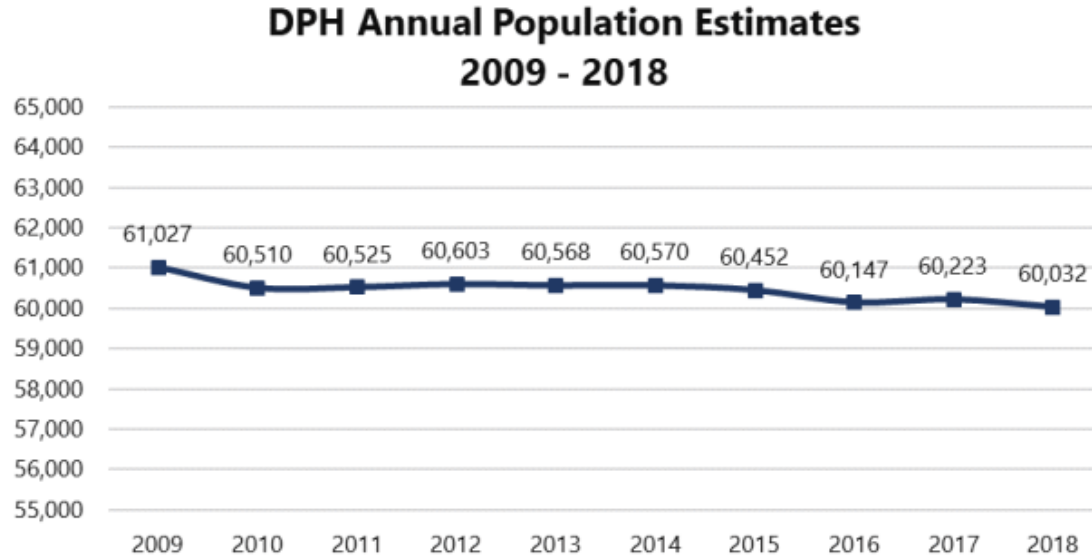
Projections Performance

Enrollment	K	1	2	3	4	5	6	7	8	9	10	11	12	K-5 Total	6-8 Total	9-12 Total	K-12 Total
2019-20 Proj. (Med)	577	520	549	557	546	579	574	636	630	696	552	532	544	3,328	1,840	2,324	7,492
2019-20 Actual	580	490	565	579	600	568	587	649	640	703	556	586	588	3,382	1,876	2,433	7,691
Deviation	3	(30)	16	22	54	(11)	13	13	10	7	4	54	44	54	36	109	199
% Difference	0.5%	-5.8%	2.9%	3.9%	9.9%	-1.9%	2.3%	2.0%	1.6%	1.0%	0.7%	10.2%	8.1%	1.6%	2.0%	4.7%	2.7%

Enrollment	K	1	2	3	4	5	6	7	8	9	10	11	12	K-5 Total	6-8 Total	9-12 Total	K-12 Total
2019-20 Proj. (High)	581	557	576	550	556	570	555	646	644	698	552	532	549	3,390	1,845	2,331	7,566
2019-20 Actual	580	490	565	579	600	568	587	649	640	703	556	586	588	3,382	1,876	2,433	7,691
Deviation	(1)	(67)	(11)	29	44	(2)	32	3	(4)	5	4	54	39	(8)	31	102	125
% Difference	-0.2%	-12.0%	-1.9%	5.3%	7.9%	-0.4%	5.8%	0.5%	-0.6%	0.7%	0.7%	10.2%	7.1%	-0.2%	1.7%	4.4%	1.7%

- Projections last updated using October 1, 2017 data, 2 years out from initial projections
- Actual K-12 enrollments are 2.7% higher than medium model and 1.7% higher than the high model
- Overall, elementary enrollments as projected with high model. However, individual grades deviate from projections.
 - 2018-19 kindergarten class much smaller than expected. However, 2019-20 kindergarten enrollment in line with projections
 - Elevated levels of in-migration in upper elementary grades over last two school years
- Middle School enrollments are 1.7% higher than high model primarily due to larger 6th grade cohort
- High school enrollments exceed high model by 4.4% driven by larger 11th and 12th grade classes

Population Estimates

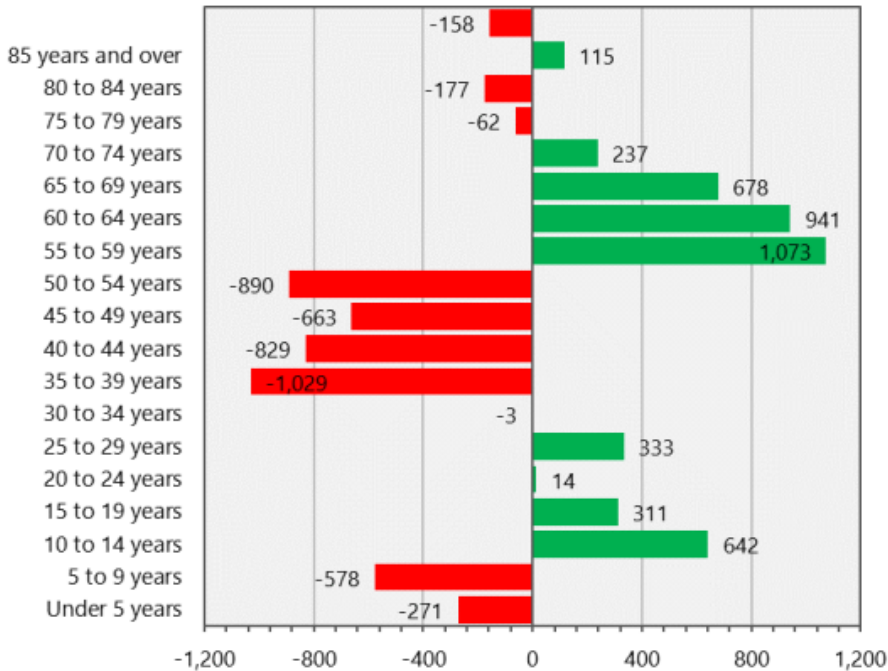


Source: CT Dept. of Public Health; Annual Town and County Population Statistics

- Since 2009, Bristol's overall estimated population has been relatively stable
- Decreased by about 995 or 1%

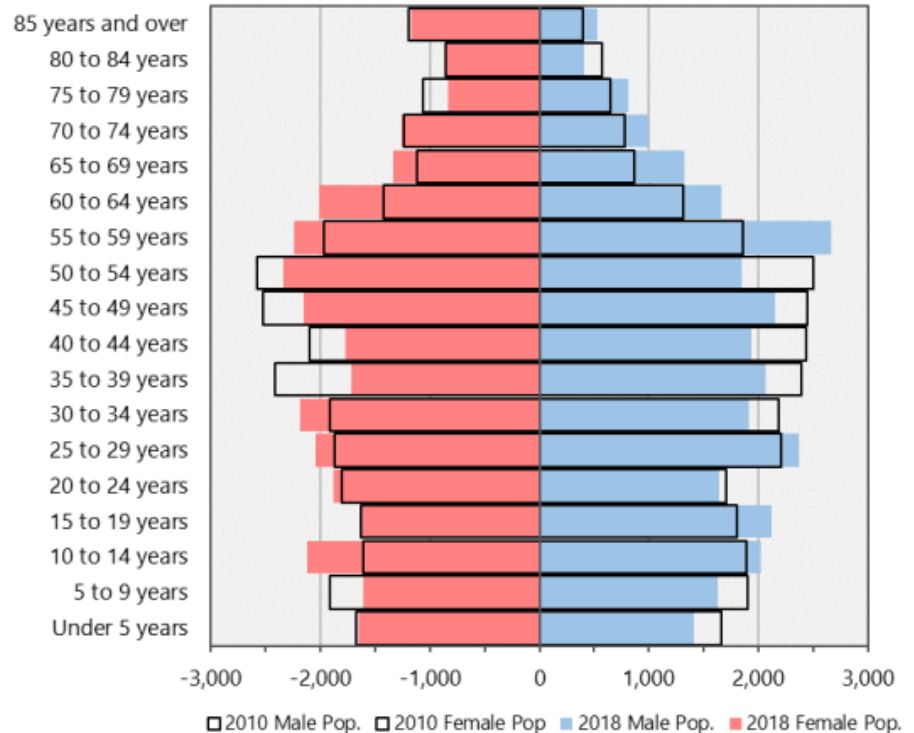
Population by Age Groups

**Population Change, by Age Group
2010 to 2018**



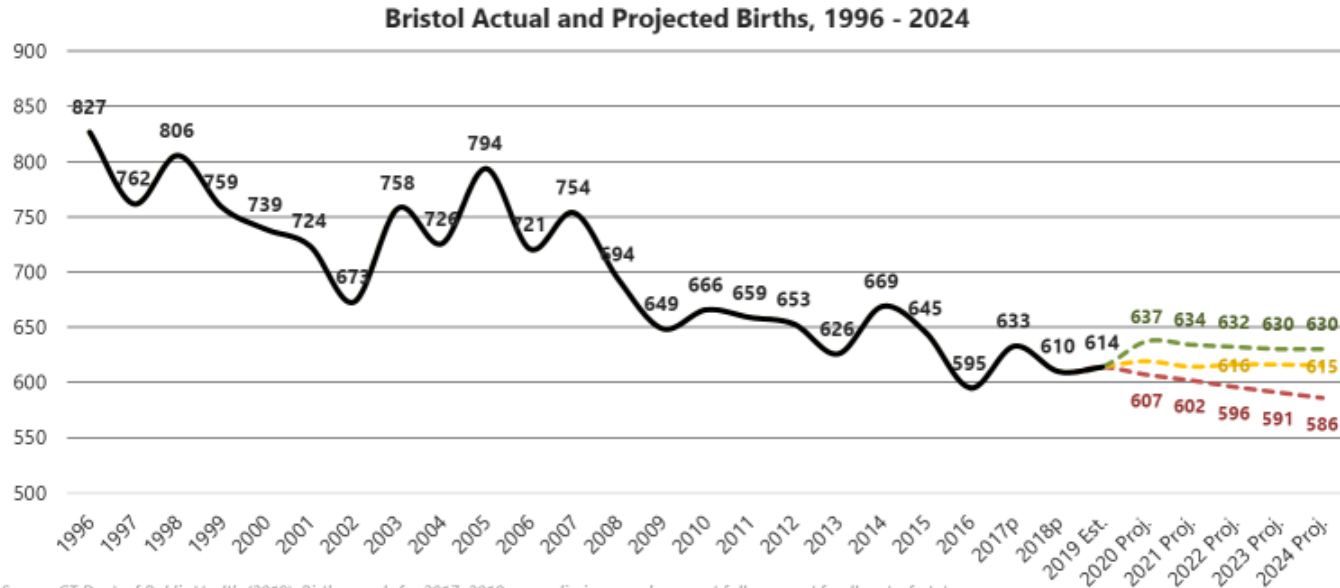
Source: ACS 5-yr Estimates (2006-2010, 2014-2018)

**Population, by Age Group
2010 to 2018**



- Estimated decreases in children 9 years or younger, while children between 10-19 increased – indicating some in-migration of families
- Baby-boomer generation shows increases to age groups 55-69

Birth Trends



Source: CT Dept. of Public Health (2019). Birth records for 2017, 2018 are preliminary and may not fully account for all out-of-state births. 2019 is estimated based on births since 2010.

- Annual births have been on a downward trend over the past 20+ years reaching an estimated 614 births in 2019
- The most recent birth “bubble” occurred in 2014 at 669 births– cohort corresponds to this year’s Kindergarten class which yielded 580 students
 - This is following an unusually small Kindergarten class in 2018-19 of 485 students
- Projected births are estimated to be within a range of about ± 30 births from 2019-20

Housing Units Change

Southeast and southwest Bristol show an increase in housing units, while the downtown area saw the most significant decline

Bristol had a **2.5% decrease** in total housing units between the 2014 and 2018 ACS estimates

29,358 total housing units in 2010-2014 estimates

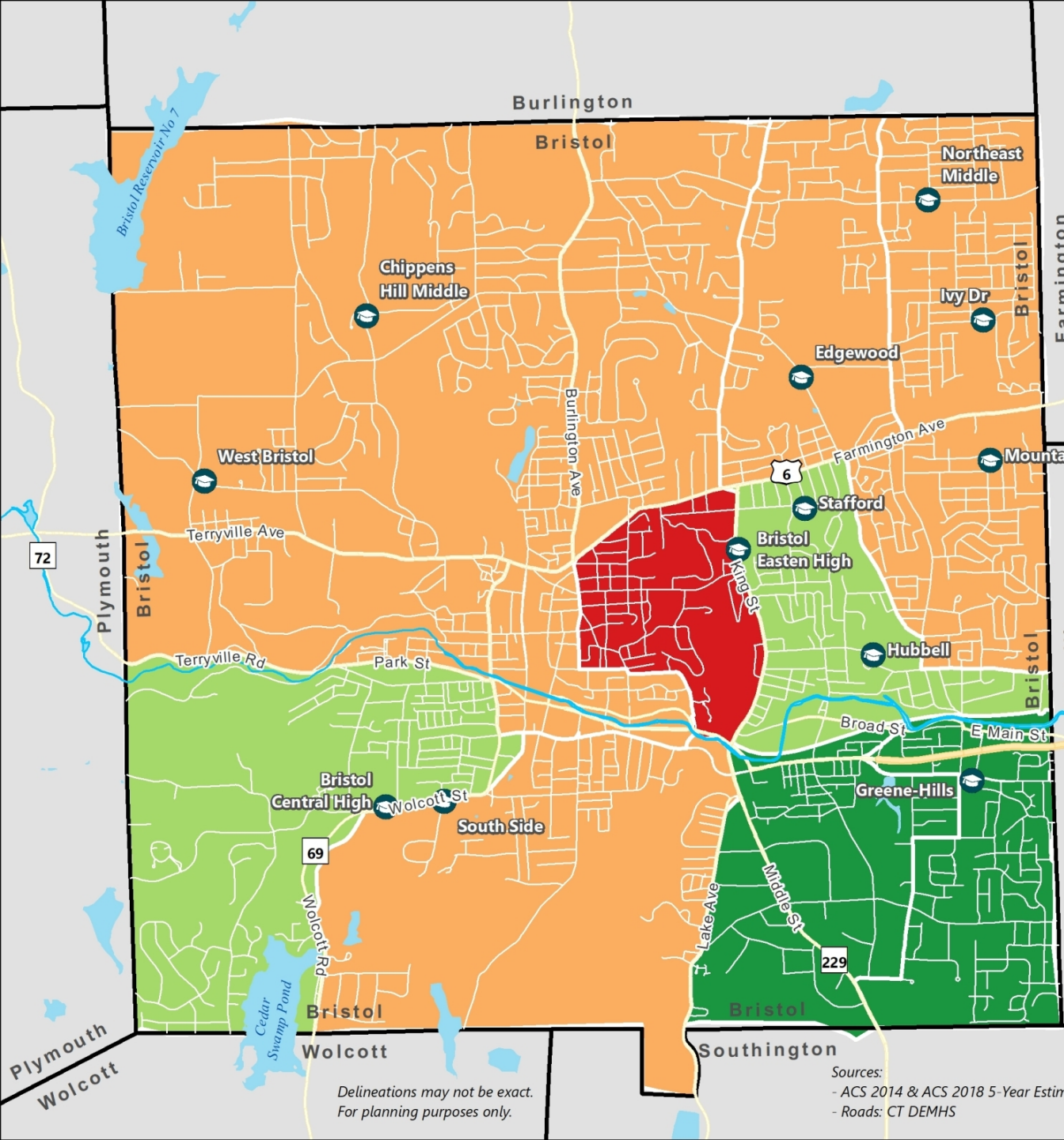
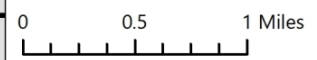
28,606 total housing units in 2014-2018 estimates

Change in Total Housing Units by Census Tract: 2014 - 2018 (ACS 5-Yr)

- 9.9% to -5.0%
- 4.9% to -2.5%
- 2.49% to 0.0%
- 0.1% to 5.0%



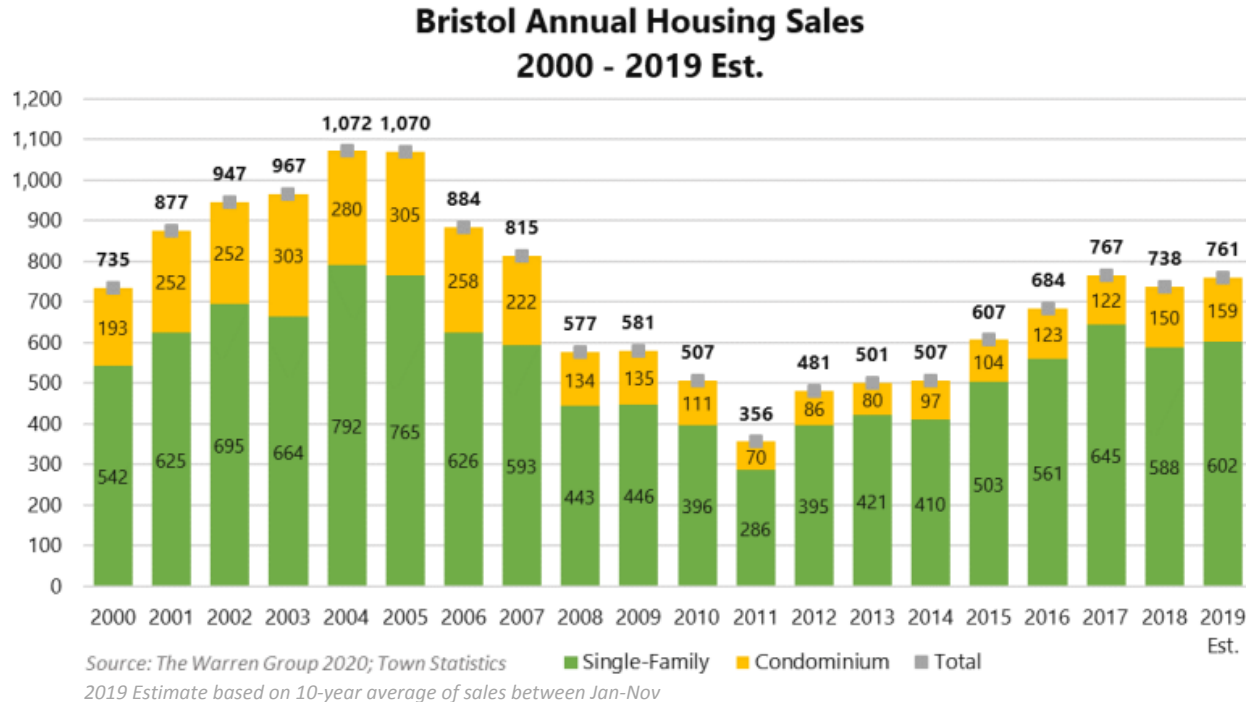
Public Schools



Delineations may not be exact. For planning purposes only.

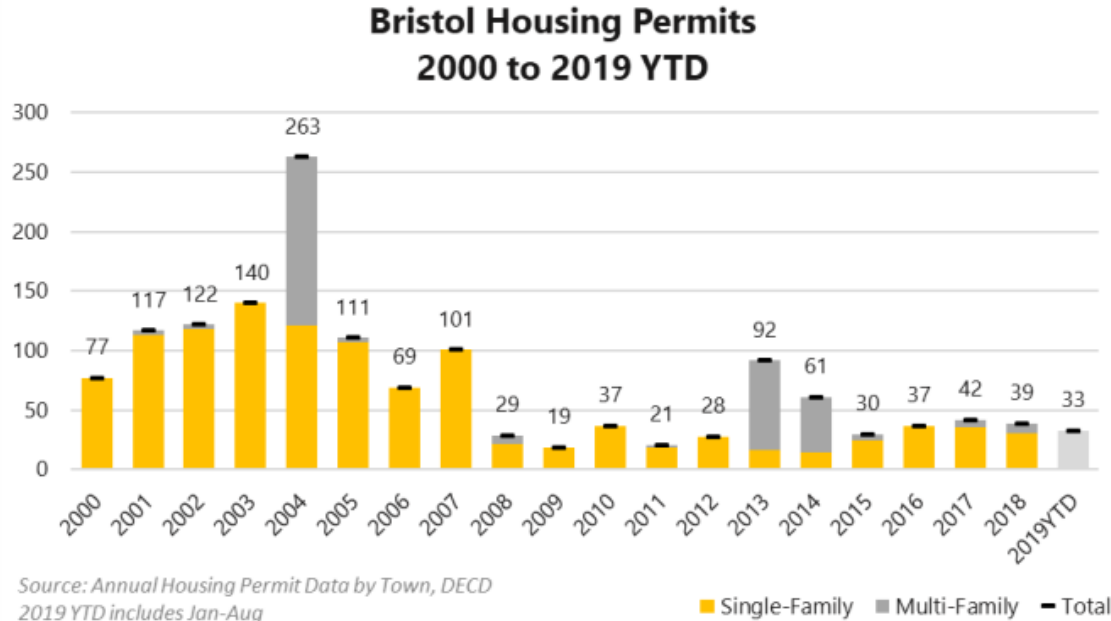
Sources:
 - ACS 2014 & ACS 2018 5-Year Estimates
 - Roads: CT DEMHS

Home Sales



- Home sales recently peaked and leveled out over the past three years averaging 753 sales
- Over the past five years, total home sales have increased by 50% recovering from the recessionary low of 356 in 2011

Housing Permits



- The trend of limited housing growth has continued since 2015, with an estimated 33 housing permits issued in 2019



Approved Residential Developments

Name	Address	Unit Type	Total Units	Total Bedrooms	Developed Bedroom Count	Undeveloped Bedroom Count	Bedrooms Per Unit	Elementary District
Orchard Hill Subdivision	Matthews Street	Single Family	61	170	(16) 2-BR, (27) 3-BR, (1) 4-BR, (1) 5-BR	(16 Units) 48-BRs	2.79	West Bristol
Saddlebrook Condos	Allentown Road	Condo	76	212	(11) 2-BR, (15) 3-BR, (5) 4-BR, (1) 5-BR	(40 Units) 120-BRs	2.79	South Side
Woodshire	365 Allentown Road	Detached Condo	43	134	(22) 3-BR, (3) 4-BR	(18 Units) 56-BRs	3.12	South Side
301 Main St	301 Main St	Apartment	32	64		(32) 2-BR	2.00	Hubbell
Trademark Acquisitions and Arcadia Acres	Barlow St	Single Family	92	299		(69) 3-BR, (23) 4-BR	3.25	West Bristol
Total			304	879	292	587		

Source: Bristol Assessor's Office

- According to City Planning Department, five currently approved residential projects of scale (potential to impact BPS enrollment)
- Currently, 35% of these units are developed with the remaining 65% to come on line over the next several years
- Half of these units located in West Bristol attendance area, and 40% located in South Side attendance area – potential for new students


Approved Residential Developments

Elementary School District	Total Approved Units
Hubbell	32
South Side	119
West Bristol	153
Total	304

West Bristol has the most approved residential units (50%) to be developed over the next several years


Other approved developments not included due to project scale and likelihood to produce students include: 164 Hill Street (4 Units) and Pine and Mitchell elderly housing (128 Units)

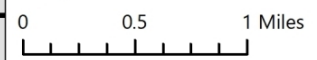
Recently Approved Residential Projects

 Approved Residential Developments

Elementary Districts

-  Edgewood
-  Mountain View
-  Greene-Hills
-  South Side
-  Hubbell
-  Stafford
-  Ivy Drive
-  West Bristol

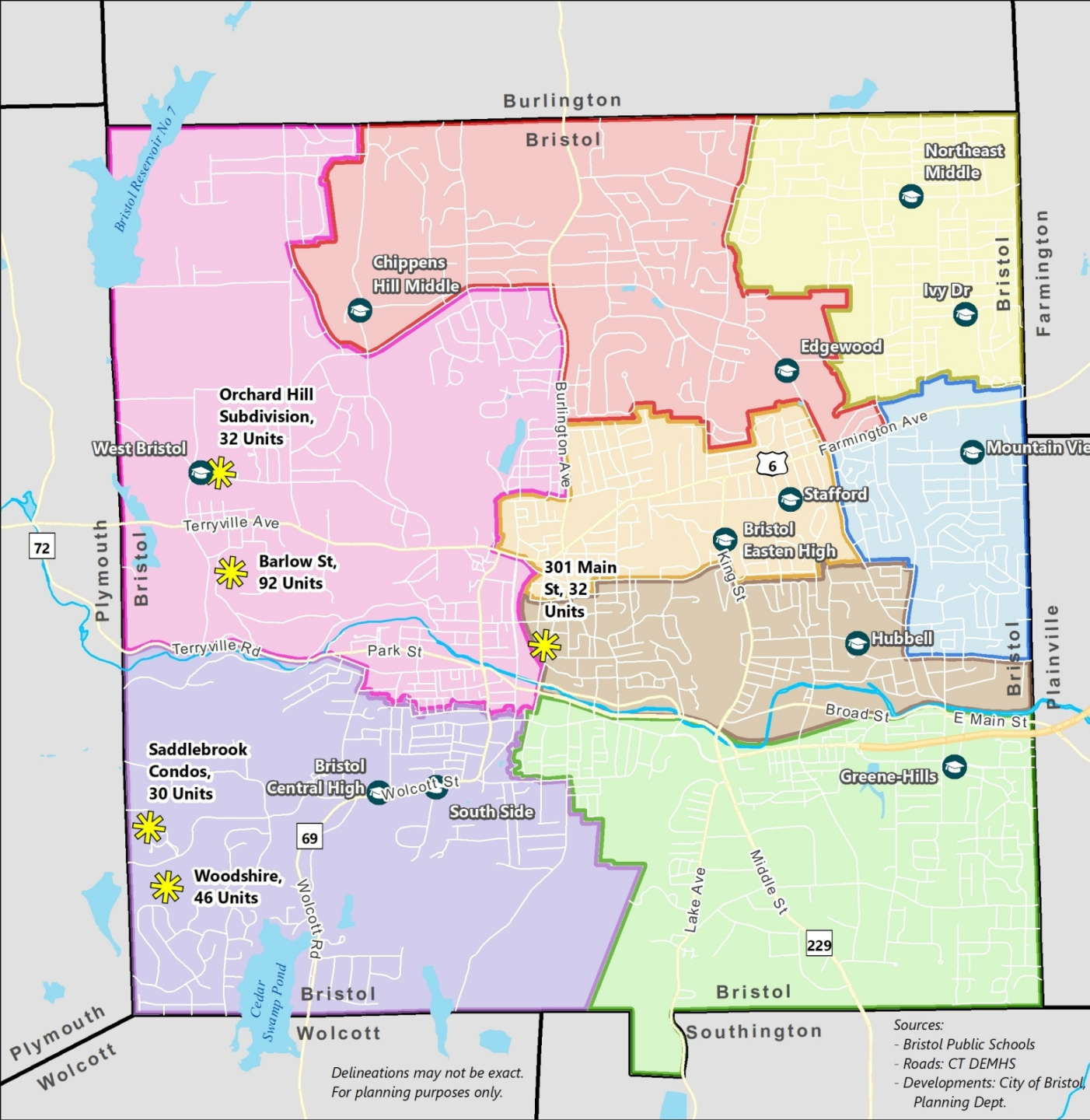
 Public Schools



 MILONE & MACBROOM



Sources:
 - Bristol Public Schools
 - Roads: CT DEMHS
 - Developments: City of Bristol Planning Dept.



Delineations may not be exact. For planning purposes only.

Renter Occupied Housing

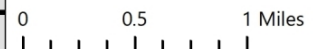
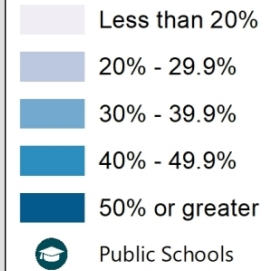
Several neighborhoods of Bristol with a majority renter occupants

Highest density renter occupied neighborhoods in the center, northeast, and southwest parts of Bristol

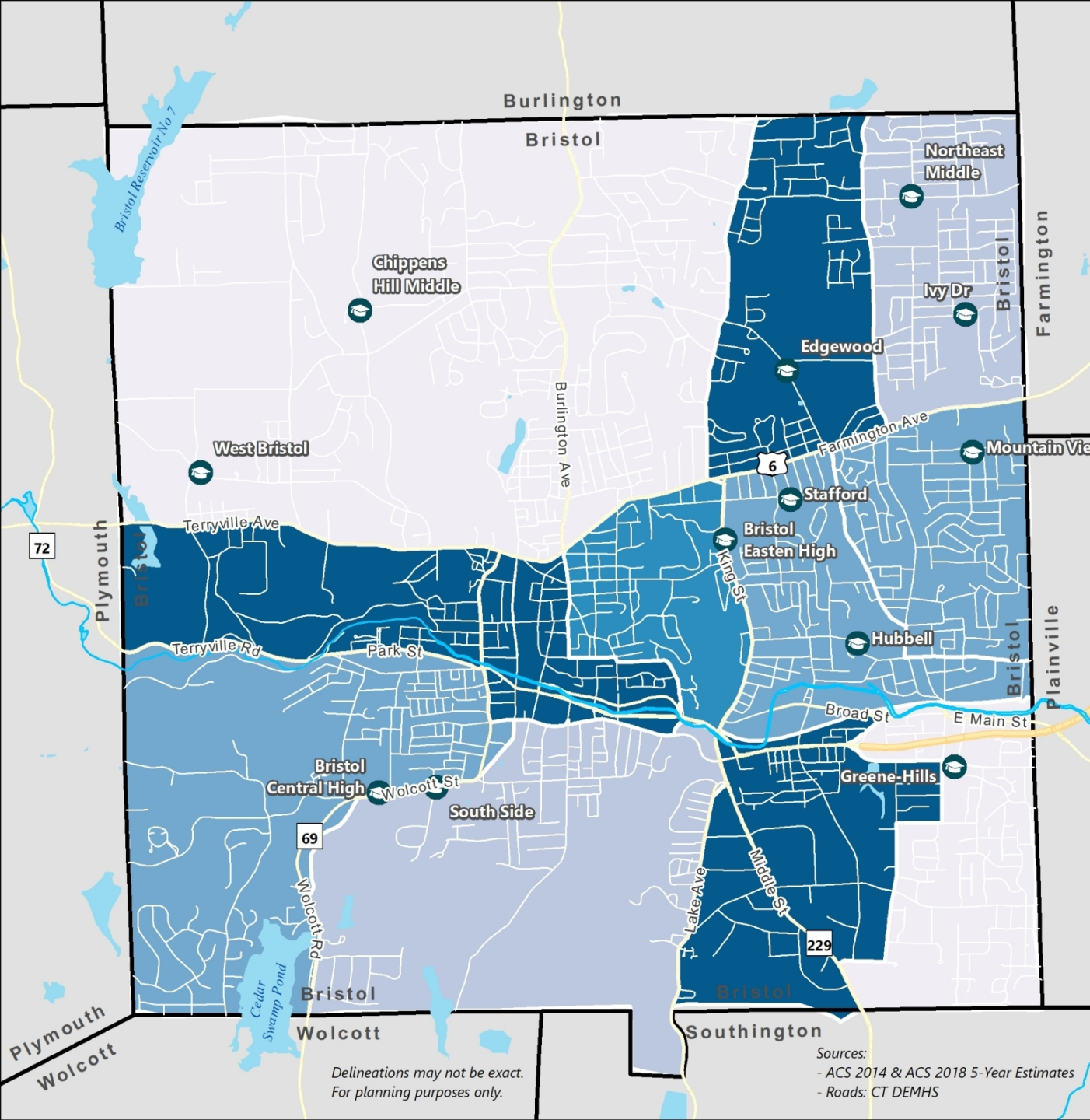
In total, Bristol is **38% renter occupied**

10,097 renter occupied housing units
26,382 total housing units

Renter Occupied Housing Units by Census Tract: 2018 (ACS 5-Yr)



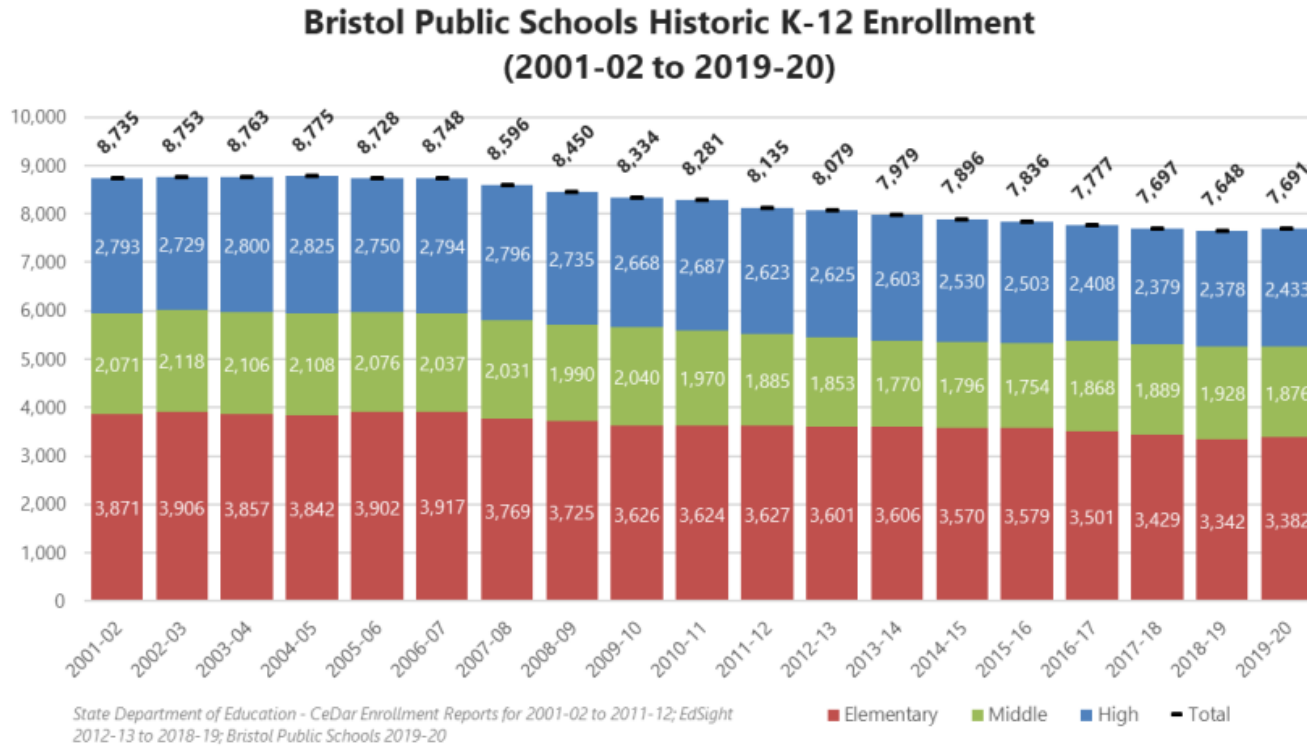
MILONE & MACBROOM



Delineations may not be exact.
 For planning purposes only.

Sources:
 - ACS 2014 & ACS 2018 5-Year Estimates
 - Roads: CT DEMHS

Historic Enrollment



- Steady enrollment decline since 2006-07
- Districtwide enrollment decreased by 643 students or 8% over the last decade
 - Elementary enrollment decreased 7% since 2009-10
 - Middle school enrollment decreased 8% since 2009-10
 - High school enrollment decreased 9% over the last decade
- However, 2019-20 marked the first year of growth at the elementary and high school levels in more than a decade

Elementary Enrollment: 2019-20

School	K-5
Edgewood	286
Greene Hills	597
Hubbell	381
Ivy Drive	350
Mt. View	316
South Side	452
Stafford	375
West Bristol	608
Outside BPS	17
Other BPS Facility	
TOTAL	3,382

Student Enrollment (PK-5): 2019-20

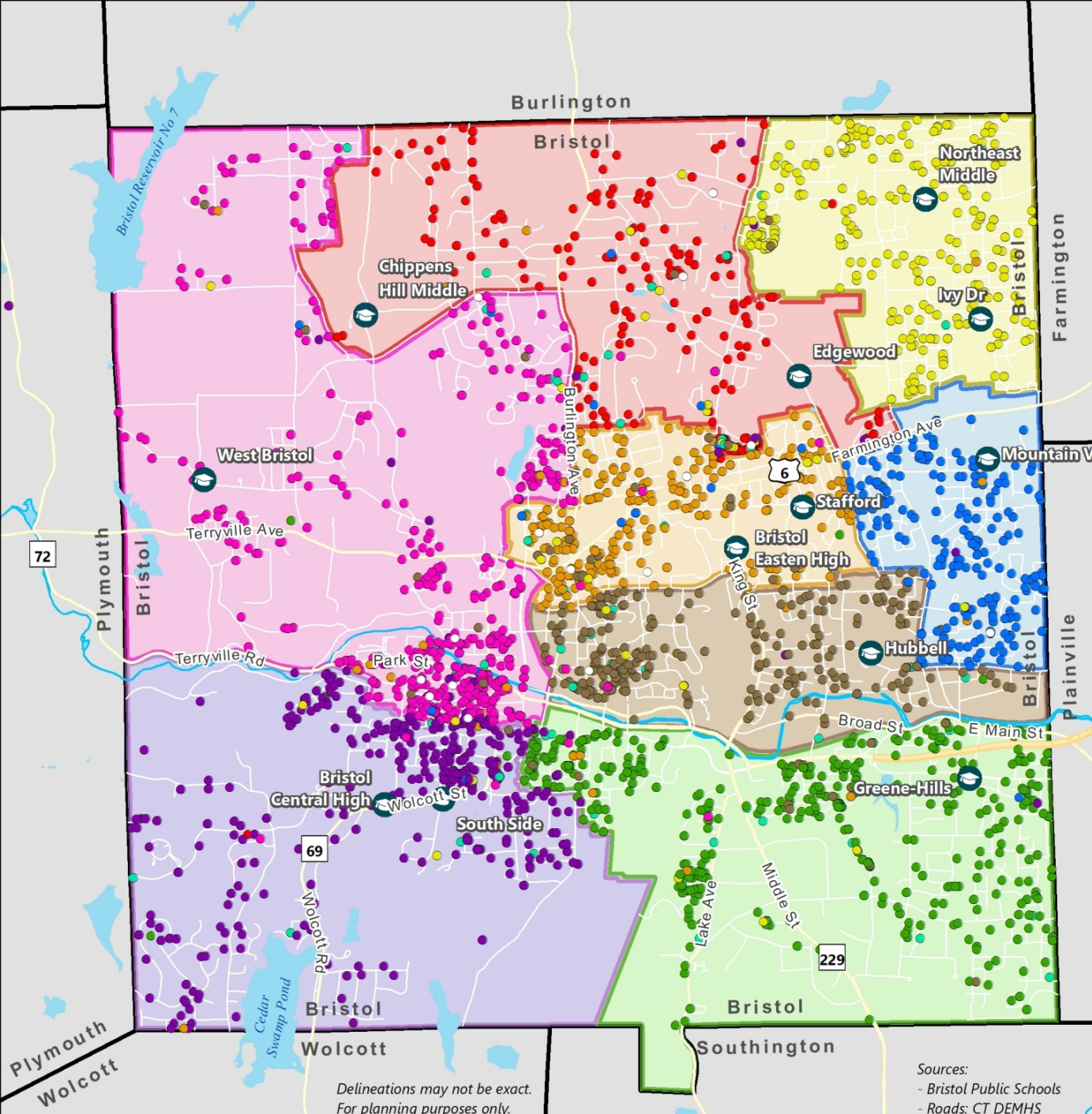
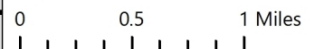
Student Enrollment

- Bristol ECC
- Mountain View
- Edgewood
- Southside
- Green-Hills
- Stafford
- Hubbell
- West Bristol
- Ivy Drive
- Outside BPS
- Other BPS Facility

Elementary Districts

- Edgewood
- Mountain View
- Greene-Hills
- South Side
- Hubbell
- Stafford
- Ivy Drive
- West Bristol

Public Schools

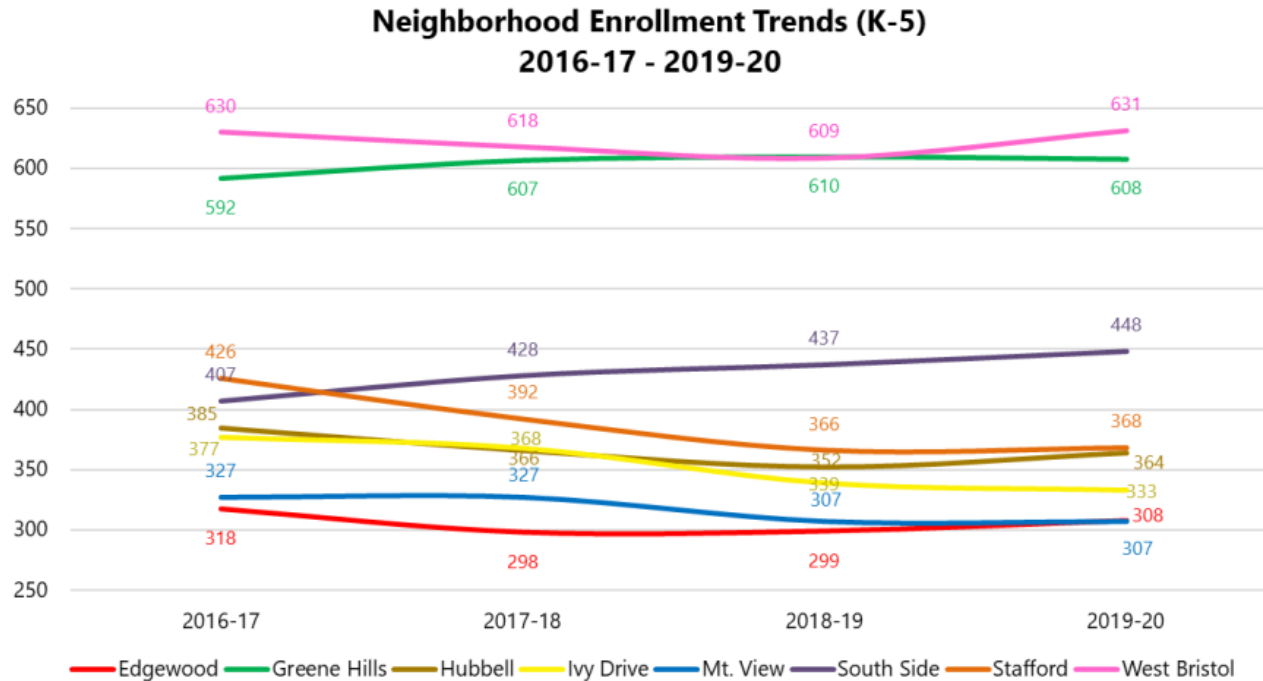


Delineations may not be exact.
For planning purposes only.

Sources:
- Bristol Public Schools
- Roads: CT DEMHS



Neighborhood Enrollment Trends

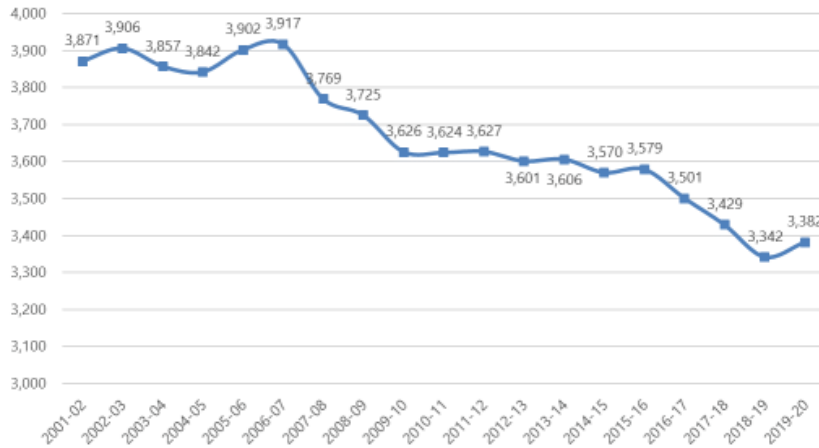


- Students were tracked by residence to analyze neighborhood trends at each elementary school
- Increases in resident population of a school district may not translate to increased enrollments due to placing students in districtwide programs



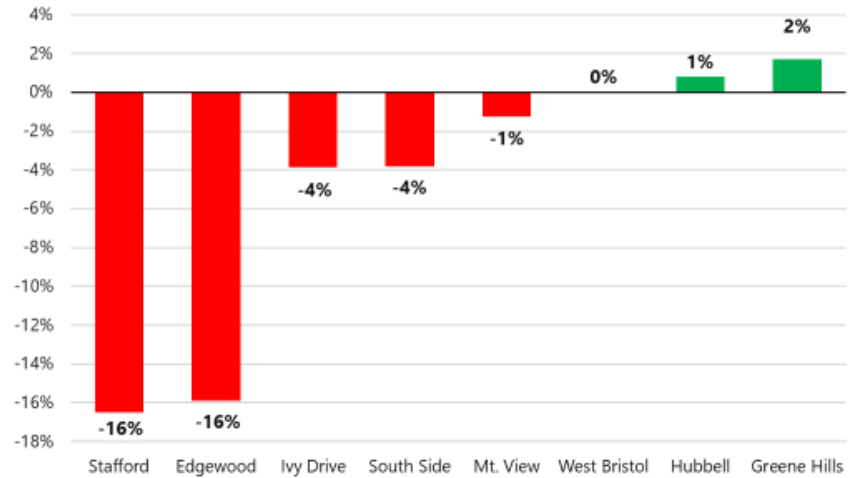
K-5 Enrollment

Bristol Public Schools Historic K-5 Enrollment (2001-02 to 2019-20)



Source: EdSight 2012-13 to 2018-19; Bristol Public Schools 2019-20

5-Year Enrollment (K-5) Change

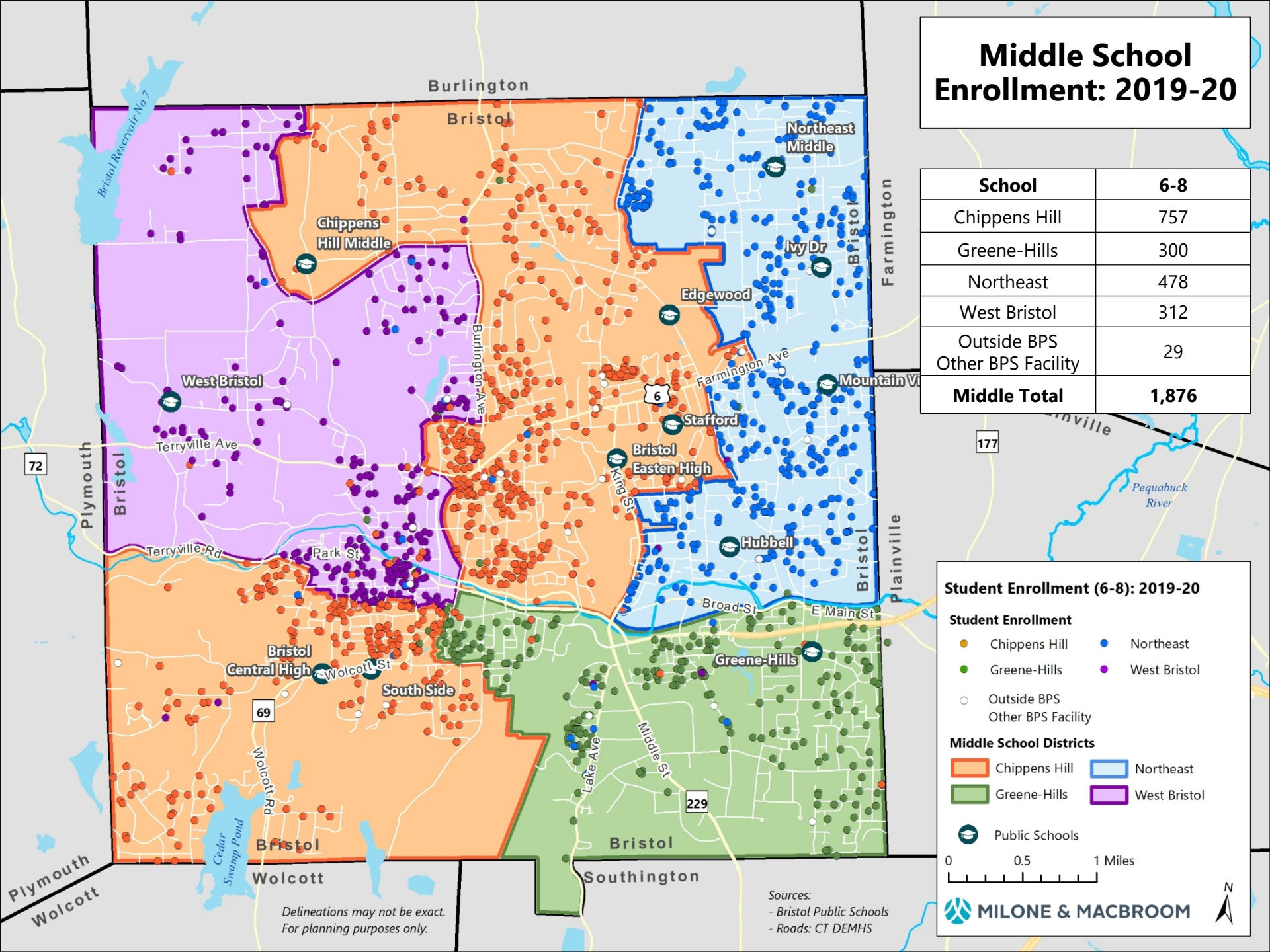


Source: EdSight 2012-13 to 2018-19; Bristol Public Schools 2019-20

- Elementary school enrollment peaked in 2006-07 at 3,917 students. Decreased to a low of 3,342 students in 2018-19
 - Elementary enrollment experienced a small uptick in 2019-20
- Since 2014-15, 5 of the 8 elementary schools have decreased in enrollment
 - Stafford (-16%) saw the most significant declines in enrollment (K-5)
- Enrollment increased at Greene-Hills (2%) and Hubbell (1%)

Middle School Enrollment: 2019-20

School	6-8
Chippens Hill	757
Greene-Hills	300
Northeast	478
West Bristol	312
Outside BPS Other BPS Facility	29
Middle Total	1,876



Student Enrollment (6-8): 2019-20

Student Enrollment

- Chippens Hill
- Greene-Hills
- Outside BPS
Other BPS Facility
- Northeast
- West Bristol

Middle School Districts

- ▭ Chippens Hill
- ▭ Greene-Hills
- ▭ Northeast
- ▭ West Bristol

● Public Schools

0 0.5 1 Miles

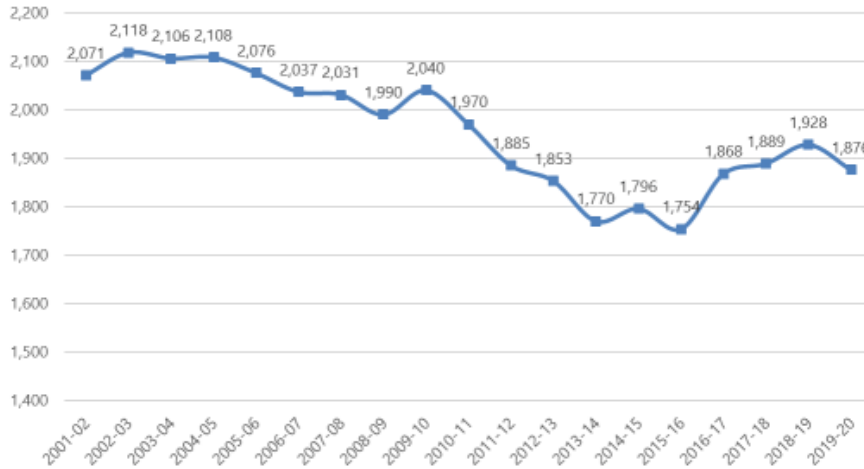
MILONE & MACBROOM

Delineations may not be exact.
For planning purposes only.

Sources:
- Bristol Public Schools
- Roads: CT DEMHS

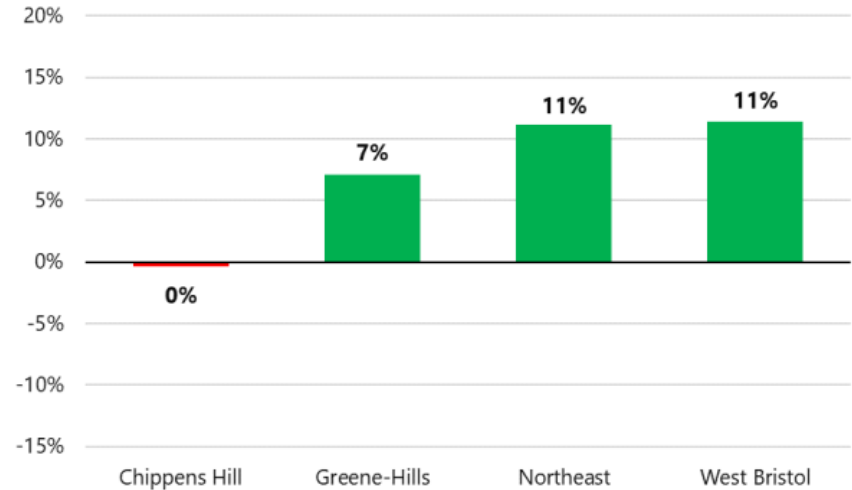
6-8 Enrollment

Bristol Public Schools Historic 6-8 Enrollment (2001-02 to 2019-20)



Source: EdSight 2012-13 to 2018-19; Bristol Public Schools 2019-20

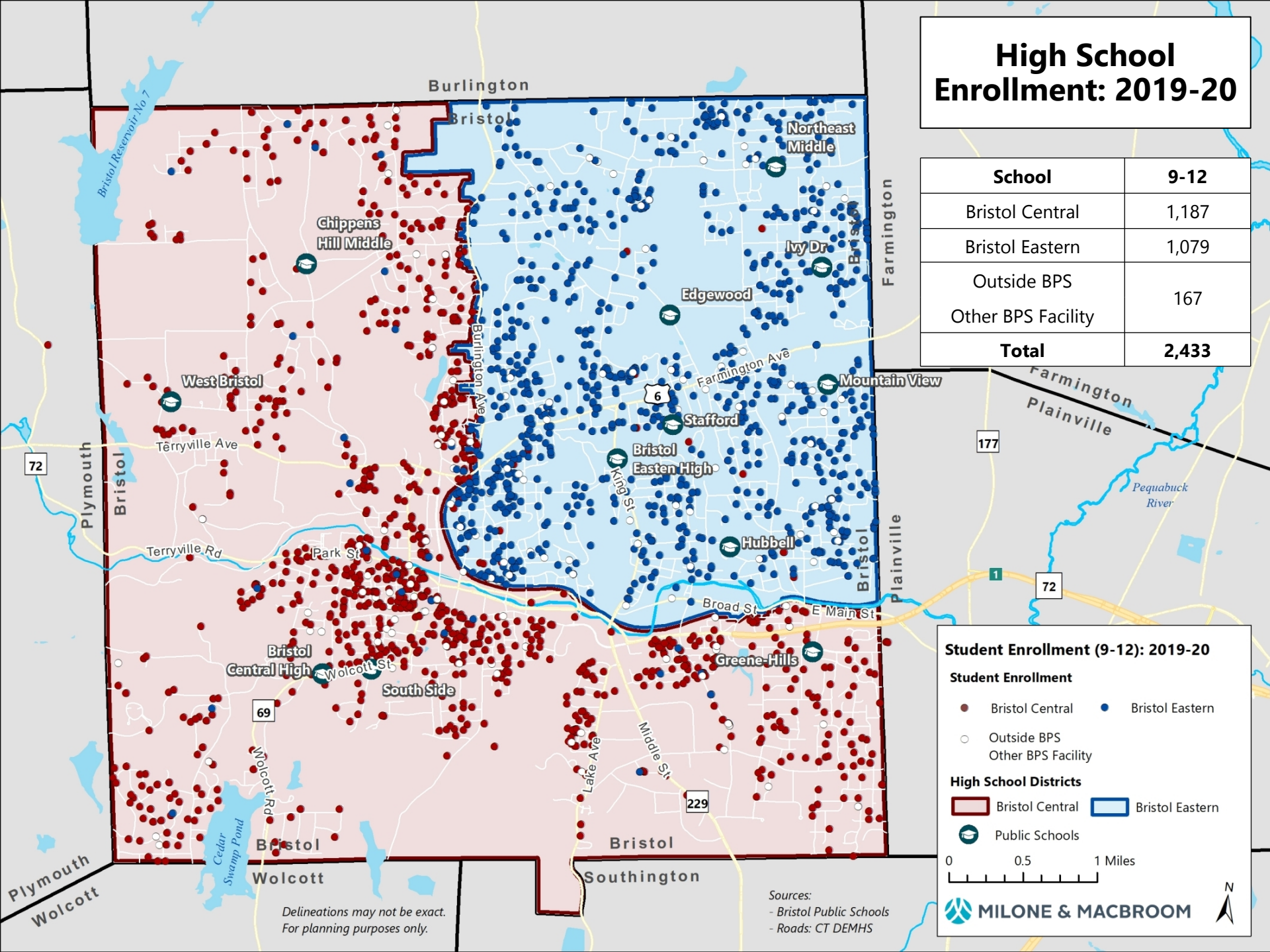
5-Year Enrollment (6-8) Change



- Middle school enrollment peaked in 2002-03 at 2,118 students. Decreased to a low of 1,754 students in 2015-16
- Since 2014-15, no middle school has declined
- This is the only grade level to experience an increasing enrollment over the past five years
 - Northeast and West Bristol have both increased 11% over the last five years

High School Enrollment: 2019-20

School	9-12
Bristol Central	1,187
Bristol Eastern	1,079
Outside BPS	167
Other BPS Facility	167
Total	2,433



Student Enrollment (9-12): 2019-20

Student Enrollment

- Bristol Central
- Bristol Eastern
- Outside BPS
- Other BPS Facility

High School Districts

- Bristol Central
- Bristol Eastern

Public Schools

0 0.5 1 Miles

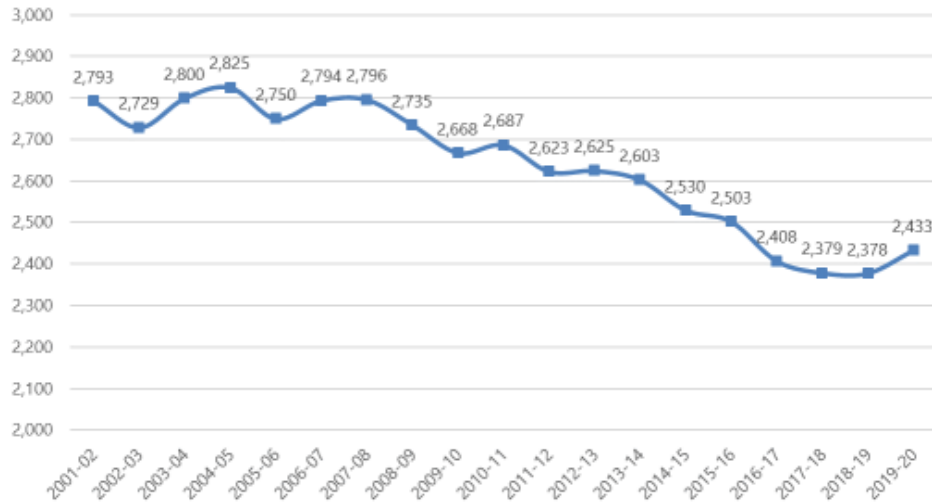
MILONE & MACBROOM

Delineations may not be exact.
For planning purposes only.

Sources:
- Bristol Public Schools
- Roads: CT DEMHS

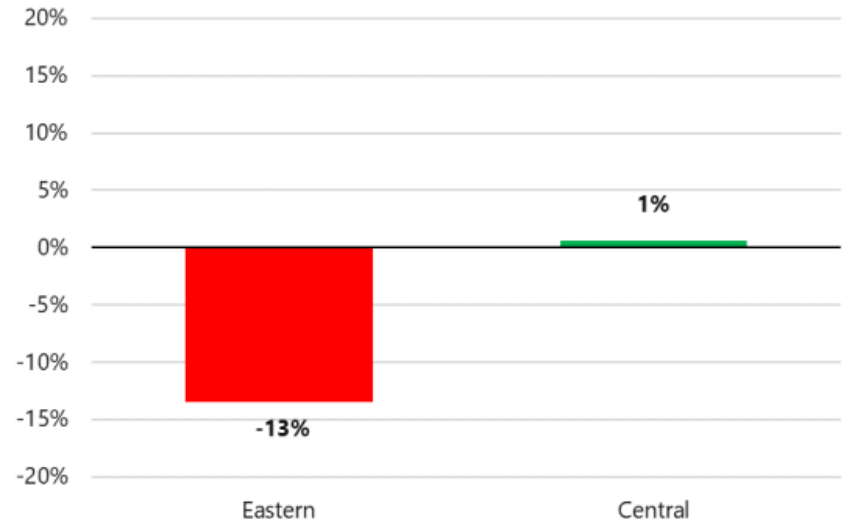
9-12 Enrollment

Bristol Public Schools Historic 9-12 Enrollment (2001-02 to 2019-20)



Source: EdSight 2012-13 to 2018-19; Bristol Public Schools 2019-20

5-Year Enrollment (9-12) Change

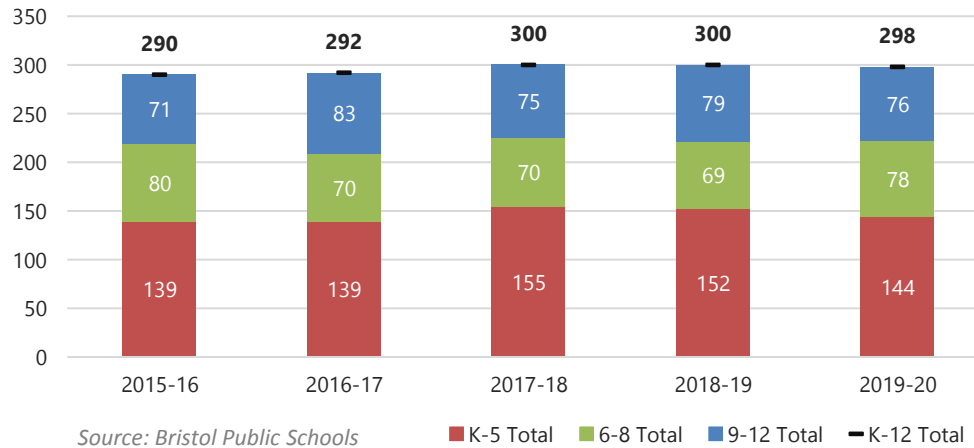


- High school enrollment reached a peak of 2,285 in 2004-05. Decreased to a low of 2,378 in 2018-19
- Since 2014-15, Bristol Eastern decreased by 13%, while Bristol Central increased by 1%
- High school enrollment increased in 2019-20 by about 2% over 2018-19



Magnet School Enrollment

Bristol Resident's (K-12) Attending Magnet Schools outside of BPS



- Consistent number of Bristol residents attending magnet schools over past 5 years
 - Elementary school averaged 146 students, middle school 73 students, and high school 77 students since 2015-16
- Anecdotally, Bristol resident enrollment at Kinsella Magnet School (9-12) decreased in 2019-20 and may remain lower due to changes at Kinsella
- Anticipate some additional return of magnet students in 2021-22 when Ana Grace Academy (K-5) is scheduled to move to Bloomfield; also in 2022-23 when Bristol's Memorial Magnet Middle School (6-8) opens

Projections Primer

- The cohort survival methodology relies on observed data from the recent past in order to project the near future
- Persistency ratios are calculated from historic enrollment data to determine growth or loss in a class as it progresses through the school system
- Persistency ratios account for the various external factors affecting enrollments: housing characteristics, residential development, economic conditions, student transfers in and out of system, and student mobility
- Changes in population, housing stock and tenure, and economic conditions help explain persistency ratios



Historic Enrollment

Pre-Kindergarten to 12th Grade Bristol Public School Enrollment History
2001-02 to 2019-20

School Year	Birth Year	Births	K	1	2	3	4	5	6	7	8	9	10	11	12	PK	PK-12 Total	K-12 Total	K-5 Total	6-8 Total	9-12 Total
2001-02	1996	827	635	617	632	662	672	653	716	692	663	763	725	669	636		8,735	8,735	3,871	2,071	2,793
2002-03	1997	762	632	688	610	628	666	682	685	727	706	714	733	673	609		8,753	8,753	3,906	2,118	2,729
2003-04	1998	806	628	642	677	600	639	671	680	706	720	721	711	713	655		8,763	8,763	3,857	2,106	2,800
2004-05	1999	759	610	677	630	671	612	642	709	700	699	744	718	694	669		8,775	8,775	3,842	2,108	2,825
2005-06	2000	739	615	674	668	652	689	604	666	718	692	756	677	693	624		8,728	8,728	3,902	2,076	2,750
2006-07	2001	724	629	637	646	674	640	691	628	670	739	802	653	696	643		8,748	8,748	3,917	2,037	2,794
2007-08	2002	673	519	659	605	648	679	659	721	637	673	834	633	680	649		8,596	8,596	3,769	2,031	2,796
2008-09	2003	758	626	555	645	590	636	673	646	712	632	801	654	648	632		8,450	8,450	3,725	1,990	2,735
2009-10	2004	726	578	646	538	634	594	636	675	655	710	733	678	645	612		8,334	8,334	3,626	2,040	2,668
2010-11	2005	794	640	590	627	545	625	597	642	664	664	794	629	616	648		8,281	8,281	3,624	1,970	2,687
2011-12	2006	721	565	657	594	633	557	621	587	638	660	728	677	604	614		8,135	8,135	3,627	1,885	2,623
2012-13	2007	754	582	598	641	601	618	561	613	604	636	734	610	681	600	286	8,365	8,079	3,601	1,853	2,625
2013-14	2008	694	537	617	601	641	588	622	551	621	598	693	632	613	665	289	8,268	7,979	3,606	1,770	2,603
2014-15	2009	649	575	560	600	596	660	579	606	561	629	679	588	637	626	337	8,233	7,896	3,570	1,796	2,530
2015-16	2010	666	600	559	559	603	594	664	577	610	567	671	603	603	626	334	8,170	7,836	3,579	1,754	2,503
2016-17	2011	659	565	596	552	571	608	609	664	590	614	596	620	578	614	296	8,073	7,777	3,501	1,868	2,408
2017-18	2012	653	568	554	568	557	563	619	613	672	604	611	559	603	606	300	7,997	7,697	3,429	1,889	2,379
2018-19	2013	626	485	568	568	572	567	582	615	631	682	620	589	553	616	308	7,956	7,648	3,342	1,928	2,378
2019-20	2014	669	580	490	565	579	600	568	587	649	640	703	556	586	588	285	7,976	7,691	3,382	1,876	2,433

State Department of Education - CeDar Enrollment Reports for 2001-02 to 2011-12; EdSight 2012-13 to 2018-19; Bristol Public Schools 2019-20



Persistence Ratios

Kindergarten through 12th Grade Persistence Ratios by School Year
2004-05 - 2019-20

Year	Birth-K	K-1	1-2	2-3	3-4	4-5	5-6	6-7	7-8	8-9	9-10	10-11	11-12	Est. of Migration
2004-05	0.804	1.078	0.981	0.991	1.020	1.005	1.057	1.029	0.990	1.033	0.996	0.976	0.938	1.0%
2005-06	0.832	1.105	0.987	1.035	1.027	0.987	1.037	1.013	0.989	1.082	0.910	0.965	0.899	1.0%
2006-07	0.869	1.036	0.958	1.009	0.982	1.003	1.040	1.006	1.029	1.159	0.864	1.028	0.928	0.4%
2007-08	0.771	1.048	0.950	1.003	1.007	1.030	1.043	1.014	1.004	1.129	0.789	1.041	0.932	0.8%
2008-09	0.826	1.069	0.979	0.975	0.981	0.991	0.980	0.988	0.992	1.190	0.784	1.024	0.929	-1.6%
2009-10	0.796	1.032	0.969	0.983	1.007	1.000	1.003	1.014	0.997	1.160	0.846	0.986	0.944	-0.3%
2010-11	0.806	1.021	0.971	1.013	0.986	1.005	1.009	0.984	1.014	1.118	0.858	0.909	1.005	-0.3%
2011-12	0.784	1.027	1.007	1.010	1.022	0.994	0.983	0.994	0.994	1.096	0.853	0.960	0.997	0.0%
2012-13	0.772	1.058	0.976	1.012	0.976	1.007	0.987	1.029	0.997	1.112	0.838	1.006	0.993	-0.3%
2013-14	0.774	1.060	1.005	1.000	0.978	1.006	0.982	1.013	0.990	1.090	0.861	1.005	0.977	-0.3%
2014-15	0.886	1.043	0.972	0.992	1.030	0.985	0.974	1.018	1.013	1.135	0.848	1.008	1.021	-0.2%
2015-16	0.901	0.972	0.998	1.005	0.997	1.006	0.997	1.007	1.011	1.067	0.888	1.026	0.983	0.3%
2016-17	0.857	0.993	0.987	1.021	1.008	1.025	1.000	1.023	1.007	1.051	0.924	0.959	1.018	1.0%
2017-18	0.870	0.981	0.953	1.009	0.986	1.018	1.007	1.012	1.024	0.995	0.938	0.973	1.048	0.1%
2018-19	0.775	1.000	1.025	1.007	1.018	1.034	0.994	1.029	1.015	1.026	0.964	0.989	1.022	1.7%
2019-20	0.867	1.010	0.995	1.019	1.049	1.002	1.009	1.055	1.014	1.031	0.897	0.995	1.063	2.1%
Long Term Average	0.824	1.033	0.982	1.005	1.005	1.006	1.006	1.014	1.005	1.092	0.879	0.991	0.981	
5-Yr Average	0.854	0.991	0.992	1.012	1.012	1.017	1.001	1.025	1.014	1.034	0.922	0.988	1.027	
4-Yr Average	0.842	0.996	0.990	1.014	1.015	1.020	1.003	1.030	1.015	1.026	0.931	0.979	1.038	
3-Yr Average	0.837	0.997	0.991	1.012	1.018	1.018	1.003	1.032	1.018	1.017	0.933	0.986	1.044	
3-Yr Weighted Avg	0.837	1.002	0.998	1.013	1.028	1.015	1.004	1.039	1.016	1.023	0.926	0.989	1.047	
2-Yr Average	0.821	1.005	1.010	1.013	1.034	1.018	1.002	1.042	1.015	1.029	0.931	0.992	1.043	

Source: Calculated by MMI from CEDAR Enrollment Reports (2001-02 - 2011-12), State Department of Education (2012-13 – 2018-19), Bristol Public Schools (2019-20), Department of Public Health (CT DPH) Birth Data

- Estimation of migration based on change in 1 – 7th grade cohort as it matriculates to 2nd – 8th grades
- Most recent two years have experienced an increased estimate of migration as more students are entering the district in the upper elementary and middle school grades
- Very low Birth-K in 2018-19 appears anomalous



New to District Students

New to District Students (1-12) by School Attended

School Name	2016-17	2017-18	2018-19	2019-20	2019-20 School Enrollment (1-12)	4-Year Trend
Edgewood	11	16	19	23	244	
Hubbell	39	41	50	42	317	
Ivy Drive	23	26	16	24	286	
Mountain View	20	27	13	20	259	
Southside	40	33	37	40	366	
Stafford	28	30	27	31	312	
Green-Hills	64	73	75	83	801	
West Bristol	96	68	93	101	812	
Chippens Hill MS	57	66	62	86	757	
Northeast MS	24	30	37	33	478	
Bristol Eastern HS	60	67	77	72	1,079	
Bristol Central HS	88	100	93	84	1,187	
Total	550	577	599	639	6,898	

Total does not include students attending other BPS facilities such as ACCESS, ASEP, Bristol Prep Academy, or the Community/Vocational Program. Also does not include students attending school outside of BPS. These students accounted for an additional 71 new to district students over the past four years.

- Compare student ID numbers from one year to the next to identify students in grades 1-12 who are “new” to the district
- Reflecting estimated in-migration rates of the last two years, increased trend in new-to-district students
 - From 2016-17 to 2019-20 there was a 16% increase in new to district students across the district



New to District Students

New to District Students (1-12) by Grade Level

Grade Levels	2016-17	2017-18	2018-19	2019-20	2019-20 Total School Enrollment	4-Year Trend
Elementary (1-5)	276	259	269	304	2,785	
Middle (6-8)	126	151	160	179	1,847	
High (9-12)	148	167	170	156	2,266	
Total	550	577	599	639	6,898	

Total does not include students attending other BPS facilities or outside of BPS.

Total Students (1-12) by Grade Level

Row Labels	2016-17	2017-18	2018-19	2019-20	4-Year Trend
Elementary (1-5)	2,907	2,831	2,837	2,785	
Middle (6-8)	1,841	1,859	1,903	1,847	
High (9-12)	2,291	2,241	2,217	2,266	
Total	7,039	6,931	6,957	6,898	

Total does not include students attending other BPS facilities or outside of BPS.

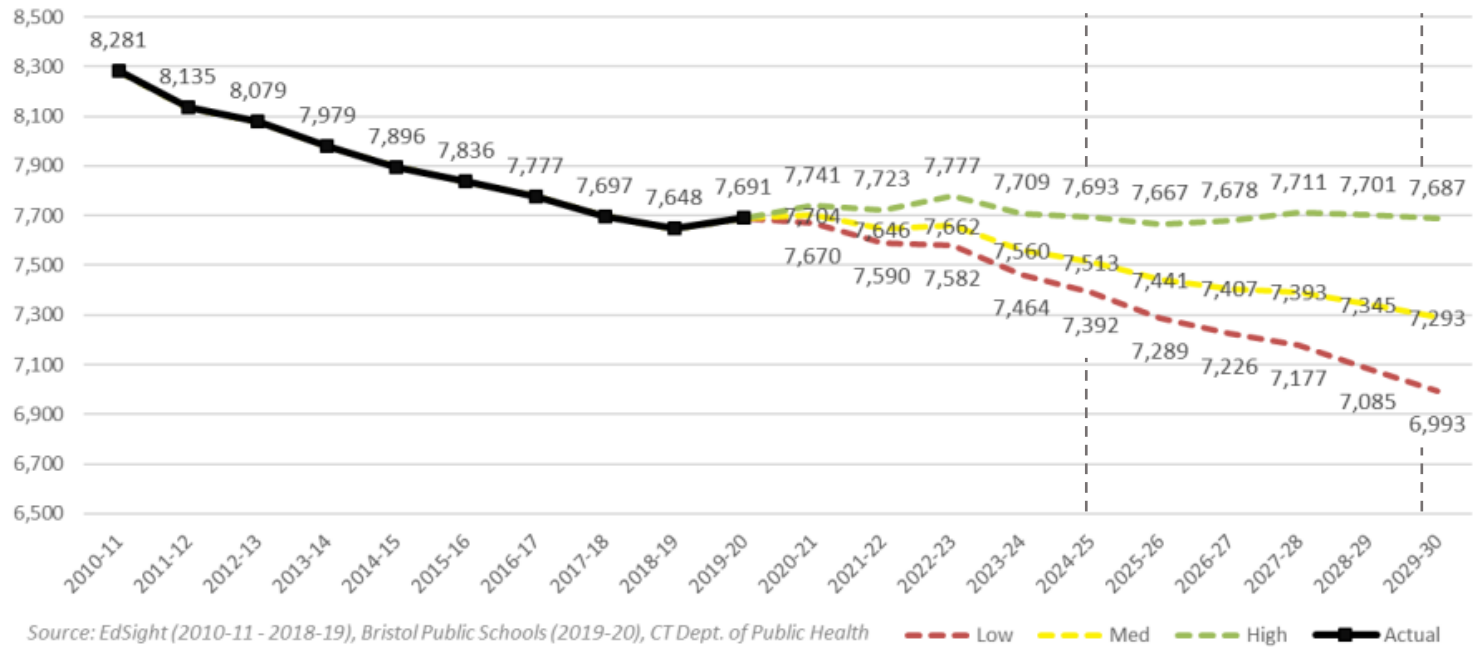
- Significant increase in new to district students at the Middle School level, up 53 students or 42% over the past four years
- Despite a positive in-migration of students, Bristol Public Schools (grades 1-12) have decreased ~2% in enrollment over the past 4 years
 - Enrollment decrease primarily driven by smaller incoming kindergarten classes

Projections Assumptions

- High projections: The most “optimistic” scenario for growth or least decline in enrollment
- Medium projections: The status quo scenario where enrollment remains on the most similar trend as the past several years
- Low projections: The least “optimistic” scenario for growth with the most decline in enrollment
- Other specific assumptions built into the models:
 - Current private and other public-school enrollment trends persist
 - PK enrollments remain at current levels
- *These projection scenarios are meant to provide an estimated window of enrollment based on previous trends in enrollment, births, demographics and housing characteristics*

K-12th Enrollment Projections

K-12 Actual and Projected Enrollment
2010-11 to 2029-30

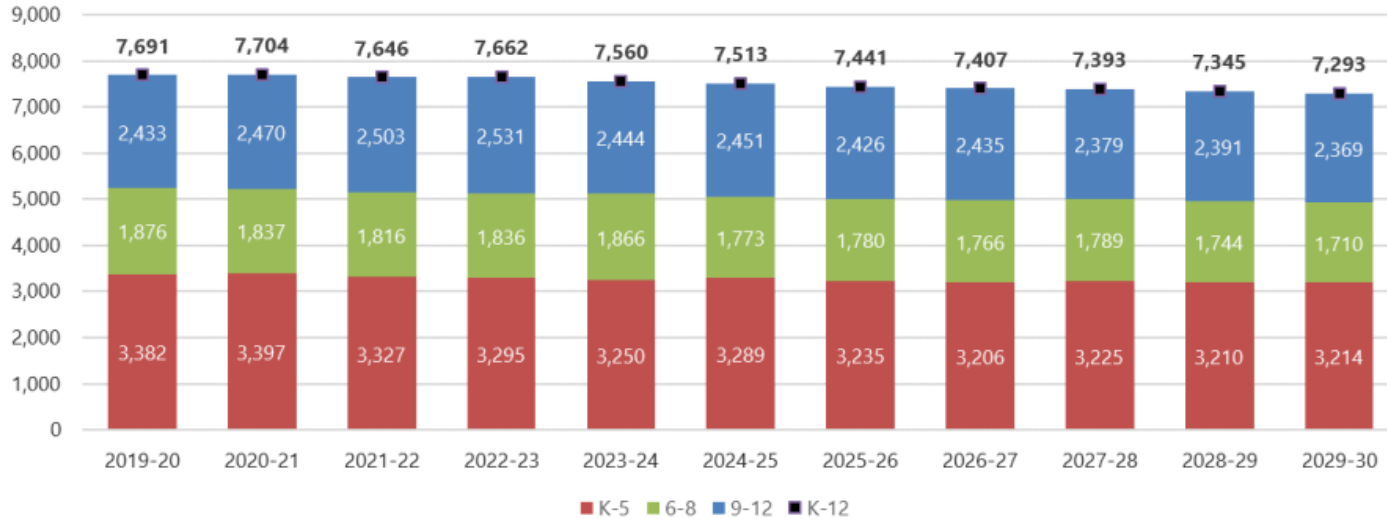


- Despite uptick in in-migration and total enrollment in 2019-20, projections remain stable in the high model or continue to decline in the medium and low models
 - 5-Year Projections for 2024-25 range from -4% to 0% change from 2019-20 enrollment
 - 10-Year Projections for 2029-30 range from -9% to 0% change from 2019-20 enrollment
- **Medium model is recommended for planning purposes**



K-12th Enrollment Projections

Districtwide Actual Enrollment and Medium Projections



- Despite increase in K-5 this year, and projected increase next year, elementary enrollment is still projected to decline out five and ten years (smaller birth cohorts)
- Middle school enrollment projected to decrease most significantly in the first five years, decreasing by ~100 students or 5%
 - During this time elementary enrollment also projected to decrease by 3%, while high school enrollment projected to increase by 1%
- Elementary enrollment projected to decrease most significantly by 2029-30, decreasing by 5%
 - Middle and high school enrollment also projected to decrease by 9% and 3% respectively



K-12th Enrollment Projections

Medium Districtwide Projections

School Year	Birth Year	Births	K	1	2	3	4	5	6	7	8	9	10	11	12	PK	Total PK-12	Total K-12	Total K-5	Total 6-8	Total 9-12
2019-20	2014	669	580	490	565	579	600	568	587	649	640	703	556	586	588	285	7,976	7,691	3,382	1,876	2,433
2020-21	2015	645	551	581	489	572	595	609	570	606	661	655	651	550	614	305	8,009	7,704	3,397	1,837	2,470
2021-22	2016	595	508	552	580	495	588	604	611	588	617	676	607	644	576	305	7,951	7,646	3,327	1,816	2,503
2022-23	2017	633	541	509	551	588	509	597	606	631	599	631	626	600	674	305	7,967	7,662	3,295	1,836	2,531
2023-24	2018	610	521	542	508	558	604	517	599	625	642	613	584	619	628	305	7,865	7,560	3,250	1,866	2,444
2024-25	2019	614	524	522	541	515	574	613	519	618	636	657	568	578	648	305	7,818	7,513	3,289	1,773	2,451
2025-26	2020	619	529	525	521	548	529	583	615	536	629	651	608	562	605	305	7,746	7,441	3,235	1,780	2,426
2026-27	2021	614	524	530	524	528	563	537	585	635	546	643	603	601	588	305	7,712	7,407	3,206	1,766	2,435
2027-28	2022	616	526	525	529	531	543	571	539	604	646	559	595	596	629	305	7,698	7,393	3,225	1,789	2,379
2028-29	2023	616	526	527	524	536	546	551	573	556	615	661	518	588	624	305	7,650	7,345	3,210	1,744	2,391
2029-30	2024	615	525	527	526	531	551	554	553	591	566	629	612	512	616	305	7,598	7,293	3,214	1,710	2,369

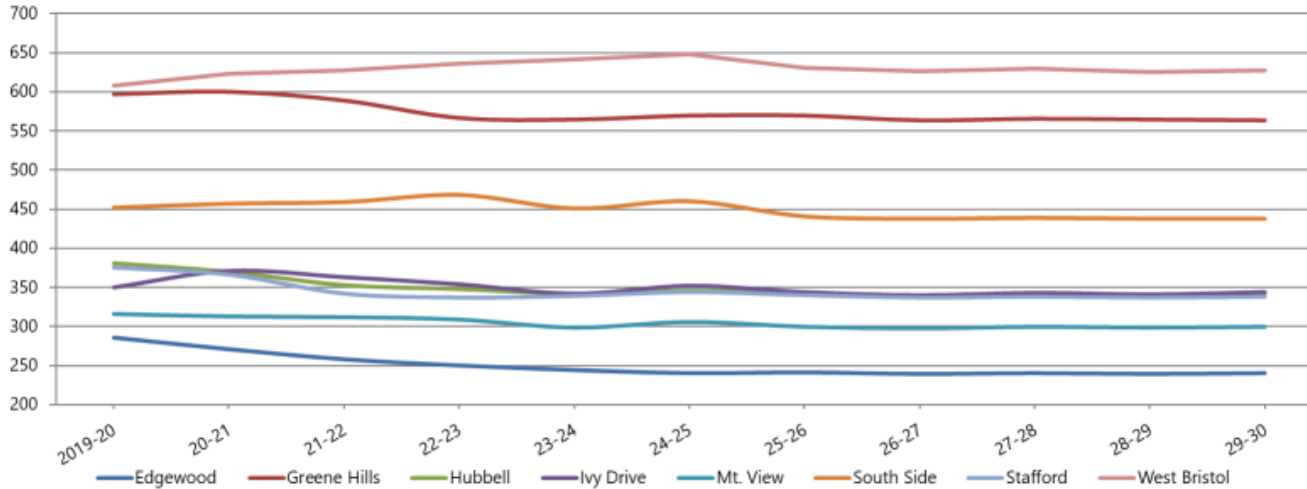
Source: Bristol Public Schools 2019-20, CT Dept. of Public Health, MMI Projections 2020-21 - 2029-30. Pre-K projections based on 5-year average, subject to change because of funding and availability.

- Medium Projection Model (Recommended)
- Does not assume greater retention of students once Memorial Magnet opens in 2022-23 as it's difficult to assess impact of opening a new school in the Hartford and CREC magnet catchment area
 - However, the current 4th grade bubble will also impact 22-23 and 23-24 middle school enrollments
 - Any additional retention or return of students who might otherwise have attended a magnet school outside of BPS will compound the bubble during those two years



K-5 Projected Enrollment

Bristol Actual and Projected Elementary (K-5) Enrollments by School (Medium Scenario)



Projections based on 4-Year Avg by school persistencies, normalized to district-wide medium scenarios multiplied by 0.993 to account for students attending school outside of BPS. West Bristol adjusted to include the highest persistency ratio to reflect growth in housing market.

- Hubbell (-9%), and Stafford (-8%) projected to decrease most significantly in the first five-years as well as ten-year projections
- West Bristol (3%) only school projected to increase over the ten-year projections

Bristol Actual and Projected Elementary (K-5) Enrollments, 2019-20 to 2029-30

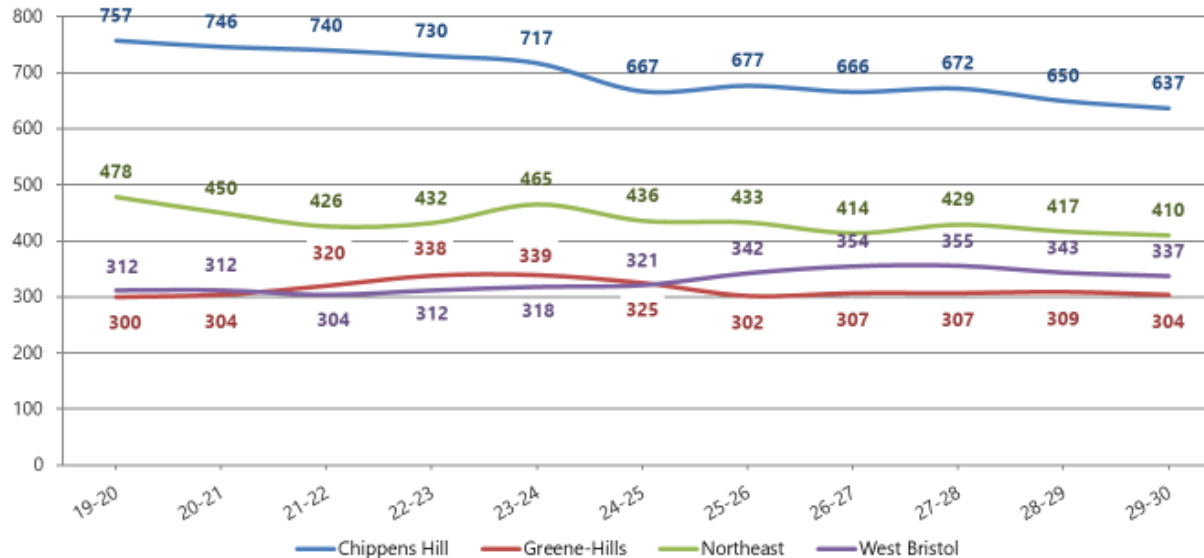
School	19-20	20-21	21-22	22-23	23-24	24-25	25-26	26-27	27-28	28-29	29-30
Edgewood	286	271	258	250	244	240	241	239	240	239	240
Greene Hills	597	600	589	567	565	570	570	564	566	565	564
Hubbell	381	370	353	348	342	346	343	338	341	340	341
Ivy Drive	350	371	363	354	342	352	344	340	343	341	344
Mt. View	316	313	312	309	299	306	300	298	300	299	300
South Side	452	457	459	468	451	460	441	438	439	438	438
Stafford	375	366	342	337	339	344	340	337	338	337	338
West Bristol	608	623	628	636	642	648	631	626	630	625	627
TOTAL:	3,365	3,371	3,304	3,269	3,224	3,266	3,210	3,180	3,197	3,184	3,192

Total Change from 19-20 0% -2% -3% -4% -3% -5% -5% -5% -5% -5%

Enrollment totals do not match districtwide projections. Normalized projections have been adjusted to not include students attending outside of Bristol schools, ACCESS, Community/Vocational, Bristol Prep Academy, ASEP. West Bristol adjusted to include the highest persistency ratio to reflect growth in housing market.

6-8 Projected Enrollment

Bristol Actual and Projected Middle (6-8th) Enrollments

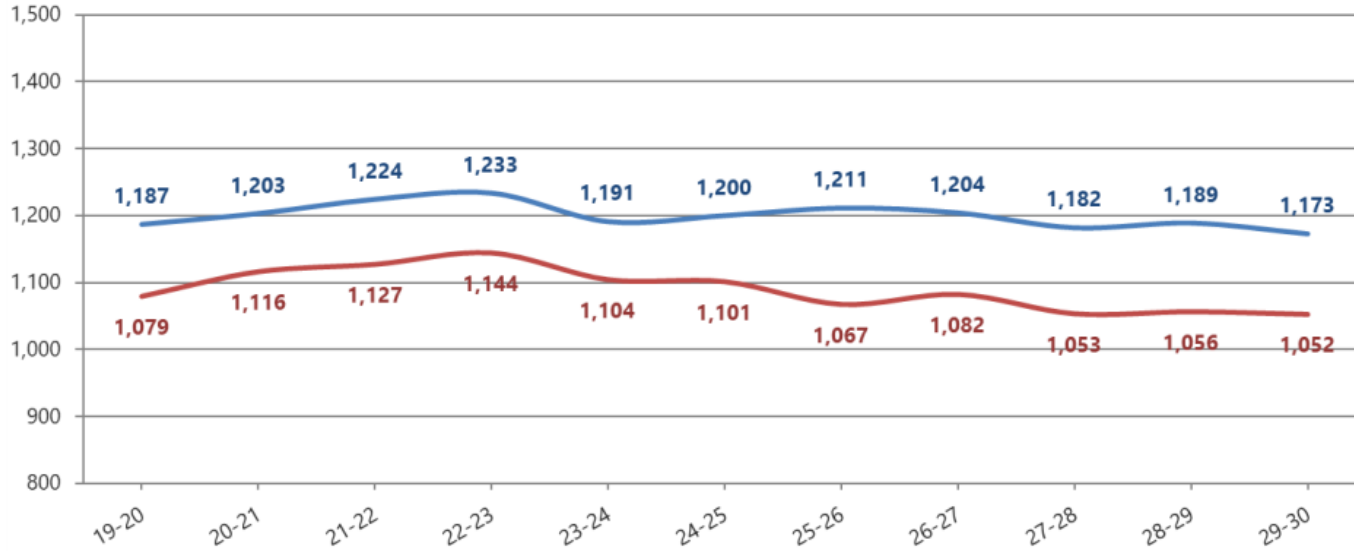


Enrollment totals do not match districtwide projections. Projections use 4-year average school persistencies, normalized to district-wide medium projections * 0.986 to account for students attending school outside of BPS. West Bristol adjusted to include the highest persistency ratio to reflect growth in housing market.

- Chippens Hill projected to decrease most significantly – by 12% over five years and 16% out ten years
- Greene-Hills and Northeast projected to absorb much of the cohort bubble affecting middle schools in 2022-23 and 2023-24; however Northeast still projected to decrease 9% out five years, while Greene-Hills is projected to increase 8% out five years
- West Bristol projected to increase most significantly by 3% over five years and 8% out ten years

9-12 Projected Enrollment

Bristol Actual and Projected High (9th-12th) Enrollments



Enrollment totals do not match districtwide projections. Projections use 3-year weighted average school persistencies, normalized to district-wide medium projections * 0.939 to account for students attending school outside of BPS.

— Bristol Central — Bristol Eastern

- Bristol Central projected to increase slightly through first five years, then decreasing by 1% out ten years
- Bristol Eastern projected to also increase slightly through first five years, before decreasing by 2% out ten years

Questions



Appendix



Individual Elementary Projections

Bristol Public Schools Elementary School Enrollment Projections 2020-21							
School	K	1	2	3	4	5	K-5th
Edgewood	45	40	43	45	50	48	271
Greene Hills	99	96	86	93	119	107	600
Hubbell	62	58	50	60	64	76	370
Ivy Drive	60	58	49	68	67	69	371
Mt. View	51	58	42	59	52	51	313
South Side	71	90	65	88	70	73	457
Stafford	61	63	53	53	60	76	366
West Bristol	98	113	96	103	107	106	623
TOTAL	547	576	484	569	589	606	3,371

Bristol Public Schools Elementary School Enrollment Projections 2021-22							
School	K	1	2	3	4	5	K-5th
Edgewood	40	43	40	42	45	48	258
Greene Hills	91	100	91	88	96	123	589
Hubbell	57	57	56	52	64	67	353
Ivy Drive	56	55	61	51	69	71	363
Mt. View	48	53	59	40	59	53	312
South Side	65	75	93	65	92	69	459
Stafford	57	62	60	52	52	59	342
West Bristol	90	103	117	101	108	109	628
TOTAL	504	548	577	491	585	599	3,304

Bristol Public Schools Elementary School Enrollment Projections 2022-23							
School	K	1	2	3	4	5	K-5th
Edgewood	44	39	43	39	42	43	250
Greene Hills	96	92	95	94	91	99	567
Hubbell	61	52	56	58	55	66	348
Ivy Drive	59	51	58	63	51	72	354
Mt. View	51	49	54	56	40	59	309
South Side	69	69	77	93	68	92	468
Stafford	60	58	59	58	51	51	337
West Bristol	96	94	106	124	106	110	636
TOTAL	536	504	548	585	504	592	3,269

Bristol Public Schools Elementary School Enrollment Projections 2023-24							
School	K	1	2	3	4	5	K-5th
Edgewood	41	42	39	42	39	41	244
Greene Hills	93	97	87	97	96	95	565
Hubbell	59	56	51	57	61	58	342
Ivy Drive	57	54	53	60	64	54	342
Mt. View	49	53	50	50	56	41	299
South Side	67	73	71	77	96	67	451
Stafford	59	61	55	57	57	50	339
West Bristol	92	101	98	113	130	108	642
TOTAL	517	537	504	553	599	514	3,224

Bristol Public Schools Elementary School Enrollment Projections 2024-25							
School	K	1	2	3	4	5	K-5th
Edgewood	42	39	42	38	42	37	240
Greene Hills	94	94	92	90	101	99	570
Hubbell	60	54	55	52	61	64	346
Ivy Drive	58	52	57	56	61	68	352
Mt. View	49	51	53	47	50	56	306
South Side	67	71	75	71	80	96	460
Stafford	59	60	58	54	57	56	344
West Bristol	93	97	105	103	118	132	648
TOTAL	522	518	537	511	570	608	3,266

Bristol Public Schools Elementary School Enrollment Projections 2025-26							
School	K	1	2	3	4	5	K-5th
Edgewood	42	40	40	41	38	40	241
Greene Hills	94	95	89	95	93	104	570
Hubbell	60	55	52	56	56	64	343
Ivy Drive	58	53	54	59	56	64	344
Mt. View	49	51	51	50	47	52	300
South Side	68	71	74	75	74	79	441
Stafford	59	60	56	56	53	56	340
West Bristol	93	98	100	111	109	120	631
TOTAL	523	523	516	543	526	579	3,210



Individual Elementary Projections

Bristol Public Schools Elementary School Enrollment Projections 2026-27							
School	K	1	2	3	4	5	K-5th
Edgewood	42	40	41	39	41	36	239
Greene Hills	94	95	90	92	98	95	564
Hubbell	59	55	53	54	59	58	338
Ivy Drive	57	53	55	56	59	60	340
Mt. View	49	51	51	49	50	48	298
South Side	67	72	73	73	79	74	438
Stafford	58	60	56	55	56	52	337
West Bristol	93	98	101	106	117	111	626
TOTAL	519	524	520	524	559	534	3,180

Bristol Public Schools Elementary School Enrollment Projections 2028-29							
School	K	1	2	3	4	5	K-5th
Edgewood	42	40	41	39	40	37	239
Greene Hills	94	94	90	93	96	98	565
Hubbell	60	54	53	55	58	60	340
Ivy Drive	58	53	55	58	58	59	341
Mt. View	49	51	52	49	48	50	299
South Side	68	71	74	74	76	75	438
Stafford	59	60	56	55	54	53	337
West Bristol	93	98	101	108	112	113	625
TOTAL	523	521	522	531	542	545	3,184

Bristol Public Schools Elementary School Enrollment Projections 2027-28							
School	K	1	2	3	4	5	K-5th
Edgewood	42	40	41	39	39	39	240
Greene Hills	93	95	90	92	95	101	566
Hubbell	59	54	54	55	57	62	341
Ivy Drive	58	52	56	58	56	63	343
Mt. View	49	51	52	48	49	51	300
South Side	67	71	74	73	77	77	439
Stafford	59	59	57	55	54	54	338
West Bristol	93	98	102	107	111	119	630
TOTAL	520	520	526	527	538	566	3,197

Bristol Public Schools Elementary School Enrollment Projections 2029-30							
School	K	1	2	3	4	5	K-5th
Edgewood	42	40	41	40	39	38	240
Greene Hills	94	95	89	92	96	98	564
Hubbell	59	55	53	54	59	61	341
Ivy Drive	57	53	56	57	59	62	344
Mt. View	49	51	52	49	50	49	300
South Side	67	72	74	73	77	75	438
Stafford	59	60	57	54	55	53	338
West Bristol	93	98	101	107	113	115	627
TOTAL	520	524	523	526	548	551	3,192



Individual Middle School Projections

Bristol Public Schools Middle School Enrollment 2020-21				
School	6	7	8	6-8th
Chippens Hill	236	241	269	746
Greene-Hills	102	109	93	304
Northeast	122	149	179	450
West Bristol	103	98	111	312
TOTAL	563	597	652	1,812

Bristol Public Schools Middle School Enrollment 2023-24				
School	6	7	8	6-8th
Chippens Hill	226	229	262	717
Greene-Hills	102	128	109	339
Northeast	153	154	158	465
West Bristol	110	105	103	318
TOTAL	591	616	632	1,839

Bristol Public Schools Middle School Enrollment 2026-27				
School	6	7	8	6-8th
Chippens Hill	214	241	211	666
Greene-Hills	107	103	97	307
Northeast	137	153	124	414
West Bristol	120	128	106	354
TOTAL	578	625	538	1,741

Bristol Public Schools Middle School Enrollment 2021-22				
School	6	7	8	6-8th
Chippens Hill	242	249	249	740
Greene-Hills	110	103	107	320
Northeast	145	128	153	426
West Bristol	105	100	99	304
TOTAL	602	580	608	1,790

Bristol Public Schools Middle School Enrollment 2024-25				
School	6	7	8	6-8th
Chippens Hill	192	239	236	667
Greene-Hills	97	103	125	325
Northeast	115	162	159	436
West Bristol	108	106	107	321
TOTAL	512	610	627	1,749

Bristol Public School Middle School Enrollment 2027-28				
School	6	7	8	6-8th
Chippens Hill	197	227	248	672
Greene-Hills	98	108	101	307
Northeast	126	144	159	429
West Bristol	110	116	129	355
TOTAL	531	595	637	1,763

Bristol Public Schools Middle School Enrollment 2022-23				
School	6	7	8	6-8th
Chippens Hill	217	256	257	730
Greene-Hills	126	111	101	338
Northeast	146	153	133	432
West Bristol	109	102	101	312
TOTAL	598	622	592	1,812

Bristol Public Schools Middle School Enrollment 2025-26				
School	6	7	8	6-8th
Chippens Hill	228	204	245	677
Greene-Hills	102	99	101	302
Northeast	145	121	167	433
West Bristol	131	104	107	342
TOTAL	606	528	620	1,754

Bristol Public Schools Middle School Enrollment 2028-29				
School	6	7	8	6-8th
Chippens Hill	209	208	233	650
Greene-Hills	104	99	106	309
Northeast	134	134	149	417
West Bristol	118	107	118	343
TOTAL	565	548	606	1,719

Bristol Public Schools Middle School Enrollment 2029-30				
School	6	7	8	6-8th
Chippens Hill	202	221	214	637
Greene-Hills	101	106	97	304
Northeast	130	142	138	410
West Bristol	113	115	109	337
TOTAL	546	584	558	1,688



Individual High School Projections

Bristol Public Schools High School Enrollment 2020-21					
School	9	10	11	12	9th-12th
Central	313	325	279	286	1,203
Eastern	302	286	237	291	1,116
TOTAL	615	611	516	577	2,319

Bristol Public Schools High School Enrollment 2021-22					
School	9	10	11	12	9th-12th
Central	317	290	325	292	1,224
Eastern	318	280	280	249	1,127
TOTAL	635	570	605	541	2,351

Bristol Public Schools High School Enrollment 2022-23					
School	9	10	11	12	9th-12th
Central	311	293	289	340	1,233
Eastern	282	295	274	293	1,144
TOTAL	593	588	563	633	2,377

Bristol Public Schools High School Enrollment 2023-24					
School	9	10	11	12	9th-12th
Central	310	287	292	302	1,191
Eastern	266	261	289	288	1,104
TOTAL	576	548	581	590	2,295

Bristol Public Schools High School Enrollment 2024-25					
School	9	10	11	12	9th-12th
Central	322	286	287	305	1,200
Eastern	295	247	256	303	1,101
TOTAL	617	533	543	608	2,301

Bristol Public Schools High School Enrollment 2025-26					
School	9	10	11	12	9th-12th
Central	327	298	286	300	1,211
Eastern	284	273	242	268	1,067
TOTAL	611	571	528	568	2,278

Bristol Public Schools High School Enrollment 2026-27					
School	9	10	11	12	9th-12th
Central	307	302	296	299	1,204
Eastern	297	264	268	253	1,082
TOTAL	604	566	564	552	2,286

Bristol Public Schools High School Enrollment 2027-28					
School	9	10	11	12	9th-12th
Central	286	283	302	311	1,182
Eastern	239	276	258	280	1,053
TOTAL	525	559	560	591	2,235

Bristol Public Schools High School Enrollment 2028-29					
School	9	10	11	12	9th-12th
Central	327	264	282	316	1,189
Eastern	294	222	270	270	1,056
TOTAL	621	486	552	586	2,245

Bristol Public Schools High School Enrollment 2029-30					
School	9	10	11	12	9th-12th
Central	313	302	263	295	1,173
Eastern	278	273	218	283	1,052
TOTAL	591	575	481	578	2,225



Districtwide Low Projections

Low Districtwide Projections

School Year	Birth Year	Births	K	1	2	3	4	5	6	7	8	9	10	11	12	PK	Total PK-12	Total K-12	Total K-5	Total 6-8	Total 9-12
2019-20	2014	669	580	490	565	579	600	568	587	649	640	703	556	586	588	285	7,976	7,691	3,382	1,876	2,433
2020-21	2015	645	543	578	485	573	588	612	570	602	658	662	648	549	602	305	7,975	7,670	3,379	1,830	2,461
2021-22	2016	595	501	541	572	492	582	600	614	584	610	680	610	640	564	305	7,895	7,590	3,288	1,808	2,494
2022-23	2017	633	533	499	536	580	499	594	602	629	592	631	627	603	657	305	7,887	7,582	3,241	1,823	2,518
2023-24	2018	610	514	531	494	544	589	509	596	617	638	612	582	619	619	305	7,769	7,464	3,181	1,851	2,432
2024-25	2019	614	517	512	526	501	552	601	511	611	626	660	564	575	636	305	7,697	7,392	3,209	1,748	2,435
2025-26	2020	607	511	515	507	533	509	563	603	524	620	647	609	557	591	305	7,594	7,289	3,138	1,747	2,404
2026-27	2021	602	507	509	510	514	541	519	565	618	531	641	597	602	572	305	7,531	7,226	3,100	1,714	2,412
2027-28	2022	596	502	505	504	517	522	552	521	579	627	549	591	590	618	305	7,482	7,177	3,102	1,727	2,348
2028-29	2023	591	498	500	500	511	525	532	554	534	587	648	506	584	606	305	7,390	7,085	3,066	1,675	2,344
2029-30	2024	586	493	496	495	507	519	536	534	568	541	607	597	500	600	305	7,298	6,993	3,046	1,643	2,304

Source: Bristol Public Schools 2019-20, CT Dept. of Public Health, MMI Projections 2020-21 - 2029-30. Pre-K projections based on 5-year average, subject to change because of funding and availability.



Districtwide High Projections

High Districtwide Projections

School Year	Birth Year	Births	K	1	2	3	4	5	6	7	8	9	10	11	12	PK	Total PK-12	Total K-12	Total K-5	Total 6-8	Total 9-12
2019-20	2014	669	580	490	565	579	600	568	587	649	640	703	556	586	588	285	7,976	7,691	3,382	1,876	2,433
2020-21	2015	645	565	583	495	572	599	611	569	612	659	659	654	552	611	305	8,046	7,741	3,425	1,840	2,476
2021-22	2016	595	521	568	589	501	591	610	612	593	621	678	614	649	576	305	8,028	7,723	3,380	1,826	2,517
2022-23	2017	633	555	524	574	597	518	602	611	638	602	639	631	609	677	305	8,082	7,777	3,370	1,851	2,556
2023-24	2018	610	534	558	529	581	617	527	603	637	648	619	595	626	635	305	8,014	7,709	3,346	1,888	2,475
2024-25	2019	614	538	537	564	536	601	628	528	628	647	667	576	590	653	305	7,998	7,693	3,404	1,803	2,486
2025-26	2020	637	558	541	542	571	554	612	629	550	637	666	621	571	615	305	7,972	7,667	3,378	1,816	2,473
2026-27	2021	634	555	561	546	549	590	564	613	655	558	655	620	616	596	305	7,983	7,678	3,365	1,826	2,487
2027-28	2022	632	554	558	567	553	568	601	565	639	665	574	610	615	642	305	8,016	7,711	3,401	1,869	2,441
2028-29	2023	630	552	557	564	574	572	578	602	589	649	684	534	605	641	305	8,006	7,701	3,397	1,840	2,464
2029-30	2024	630	552	555	563	571	594	582	579	627	598	668	637	530	631	305	7,992	7,687	3,417	1,804	2,466

Source: Bristol Public Schools 2019-20, CT Dept. of Public Health, MMI Projections 2020-21 - 2029-30. Pre-K projections based on 5-year average, subject to change because of funding and availability.