



*Wharton County
Junior College*



Monthly Financial Reports

June 2018



Revenue & Expenditure Summary

	FISCAL 2018				FISCAL 2017			% OF PRIOR YR ACTUAL
	Current Month	Y-T-D ACTUAL	Budget	% of Budget	Y-T-D ACTUAL	Budget	% of Budget	
Fund 1000								
Revenues:								
State appropriations	\$ 890,721	\$ 7,618,659	\$ 9,373,136	81.28%	\$ 7,397,496	\$ 9,112,077	81.18%	103%
Tuition and Fees	169,992	21,349,659	22,071,815	96.73%	21,542,328	21,903,163	98.35%	99%
Advalorem Taxes	55,532	6,307,392	6,301,312	100.10%	5,802,281	5,800,669	100.03%	109%
Mandatory Transfers	-	243,038	1,102,507	22.04%	244,115	1,524,761	16.01%	100%
Non-mandatory Transfers	-	-	2,138,862	0.00%	-	1,335,974	0.00%	0%
Other Revenues	54,843	410,212	526,678	77.89%	470,125	518,459	90.68%	87%
Total Revenues	1,171,089	35,928,960	41,514,310	86.55%	35,456,345	40,195,103	88.21%	101%
Expenditures:								
Salaries	1,531,004	17,740,850	22,669,950	78.26%	17,577,282	22,329,244	78.72%	101%
Employee Benefits	321,644	3,667,339	5,269,612	69.59%	3,803,114	5,234,612	72.65%	96%
Capital Expenditures	92,444	1,131,407	1,886,738	59.97%	516,031	1,391,353	37.09%	219%
Mandatory Transfers	-	362,255	363,250	99.73%	360,962	361,800	99.77%	100%
Non-mandatory Transfers	-	-	-	-	-	-	0.00%	0%
Other Expenditures	709,496	8,001,460	11,324,760	70.65%	7,532,393	10,878,094	69.24%	106%
	2,654,588	30,903,311	41,514,310	74.44%	29,789,782	40,195,103	74.11%	104%
Net increase/ (decrease) in net assets	\$ (1,483,499)	\$ 5,025,649			\$ 5,666,563			
Less Outstanding encumbrances		(1,784,744)			(2,072,230)			
Net increase less encumbrances		\$ 3,240,905			\$ 3,594,333			

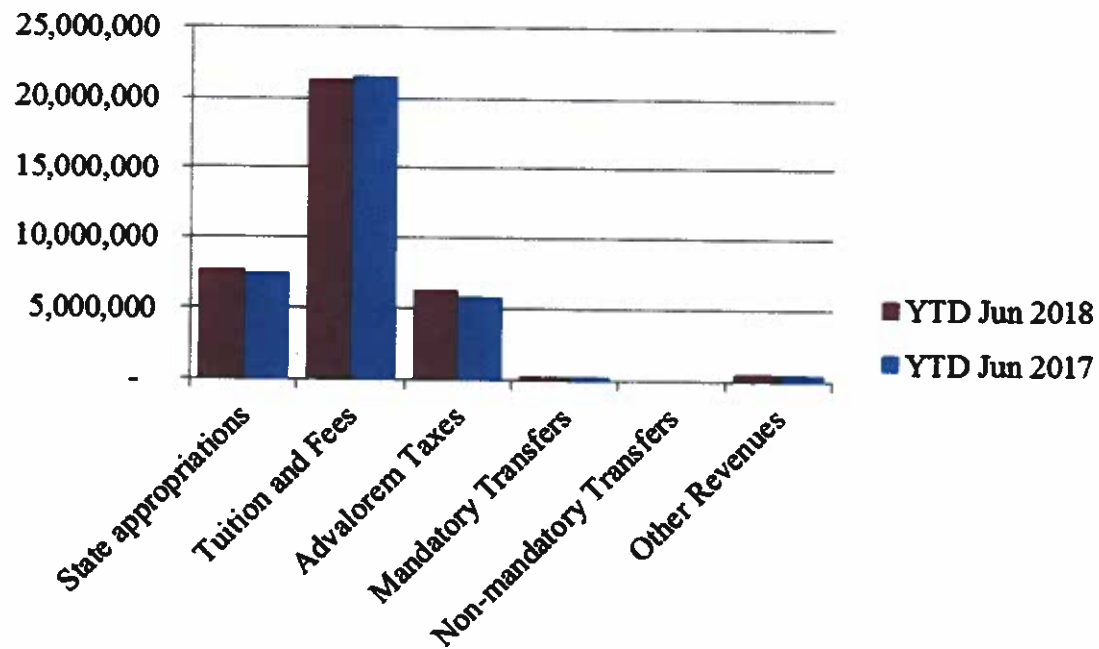
* Note: Net student receivables in the amount of \$ 4,467,955.84 are currently outstanding. Tuition and fees are subject to collection in future periods.



Wharton County
Junior College

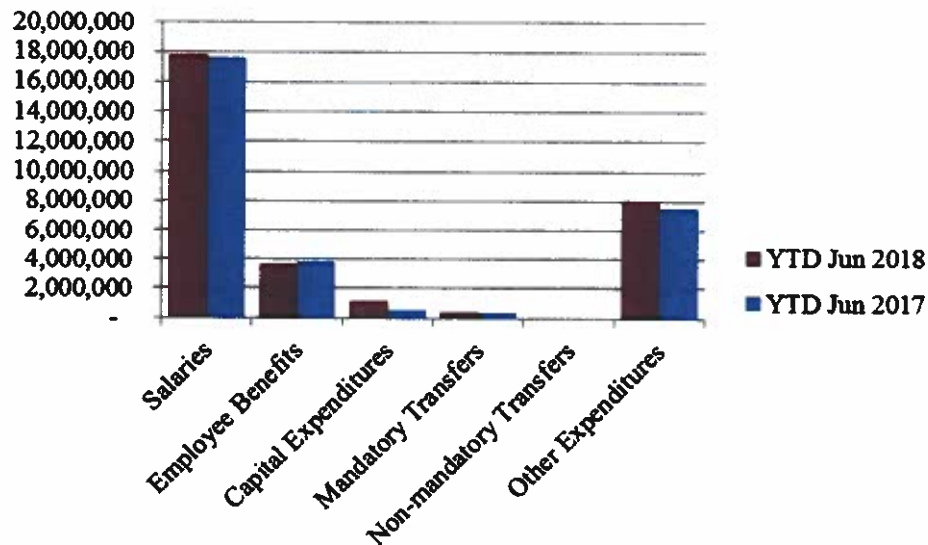


Year to Date Revenues





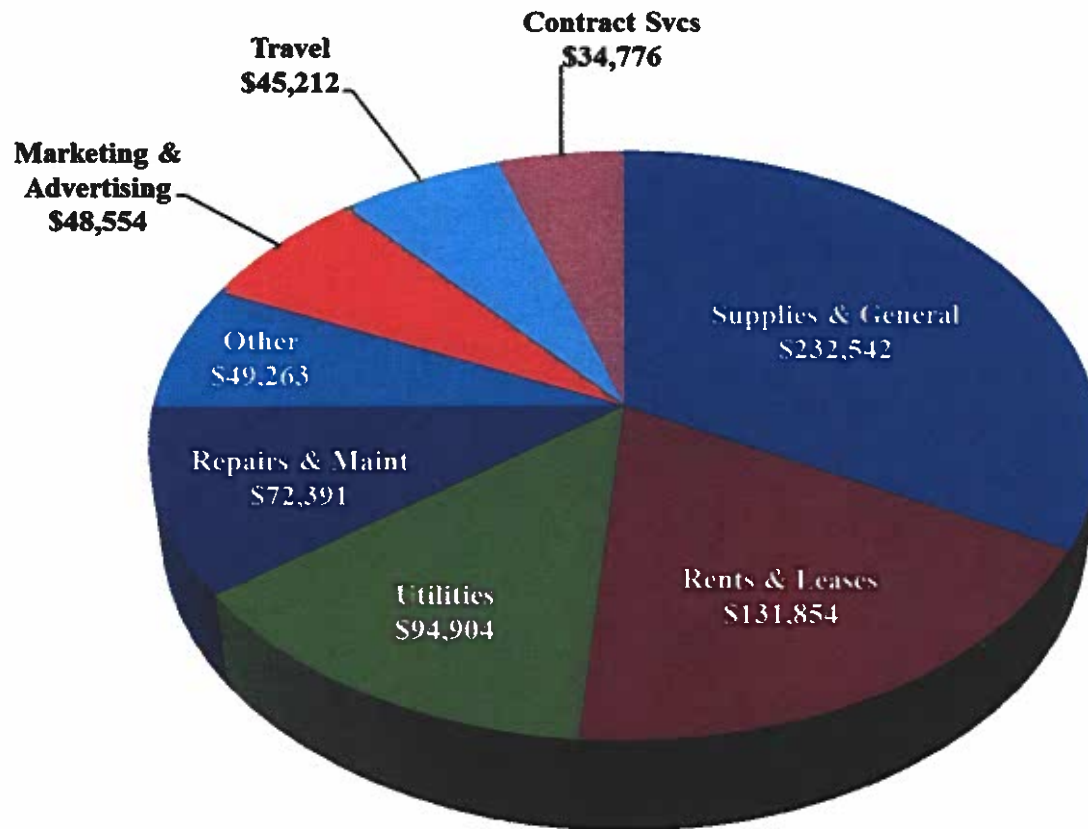
Year to Date Expenses



- Progress payment of \$85,000 made to Bass Construction for Parking Lot 4



Other Expenses for June



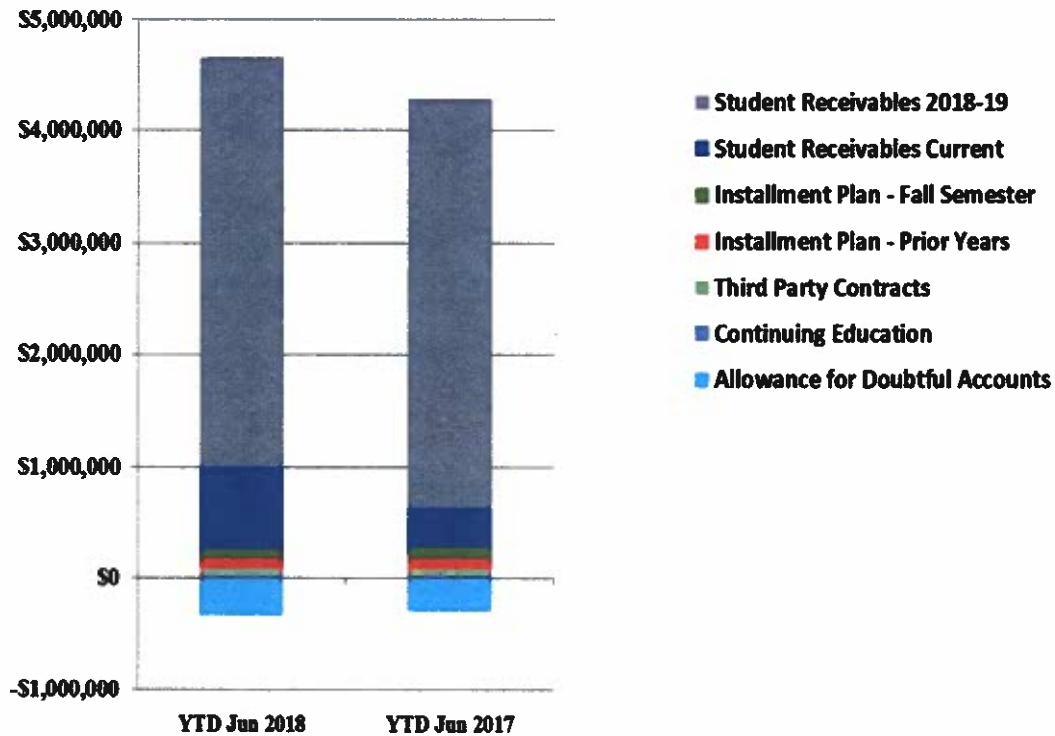


Analysis of Student Receivable Outstanding As of June 30, 2018

	2018	2017
Student Receivables Current and Prior Yr.	\$ 746,675.75	\$ 374,745.19
Student Receivables 2018-19	\$ 3,660,319.00	\$ 3,641,857.50
Installment Plan Receivable Due Fall Semester	\$ 74,317.99	96,268.19
Installment Plan Receivable Due Spring Semester	90,676.06	74,746.01
Installment Plan Receivable Summer I & II	56,858.60	68,360.60
Installment Plan Receivable Prior Years	101,084.23	89,931.15
Total Installment Plan Receivable	\$ 322,936.88	\$ 329,305.95
Third Party Contracts Receivable	\$ 56,649.70	\$ 61,652.24
Continuing Education Receivable	\$ 19,410.50	18,300.50
Allowance for Doubtful Accounts	(338,035.99)	(302,278.86)
Net Accounts Receivable	\$ 4,467,955.84	\$ 4,123,582.52



AR by Category



- Student Receivables Current variance due to Summer PELL, disbursement date 07/11/2018

COMBINED BALANCE SHEET

(Funds included: GOVERNMENTAL FUND TYPES)

Governmental Fund Types

	Auxiliary Enterprise	Restricted Funds	Current Unrestricted	Current Year 2018	Prior Year 2017
ASSETS and OTHER DEBITS:					
ASSETS:					
Cash	192,676	573,934	1,654,723	2,421,333	3,590,629
Cash Investments	711,371	675,881	16,038,442	17,425,693	16,785,775
Accounts Receivable	24,787	5,681	4,489,551	4,520,020	4,173,313
Taxes Receivable		--	394,687	394,687	349,322
Local, St & Fed Agency Receivable		6,211	--	6,211	8,274
Due From Other Funds		--	--	--	137,783
Prepaid Expense		--	--	--	--
Property, Plant & Equipment		--	--	--	--
Deferred Outflows		--	1,977,874	1,977,874	2,267,905
TOTAL ASSETS AND OTHER DEBITS:	928,834	1,261,707	24,555,277	26,745,818	27,313,001
Liabilities, equity and other credits					
LIABILITIES:					
Accounts Payable	200	17	217,363	217,580	-64,583
Employee Benefits Payable		--	166,725	166,725	163,723
Payroll Taxes Payable		--	1,373	1,373	-
Accrued Liabilities		--	--	--	--
Deferred Revenue		460,219	3,734,265	4,194,485	4,137,231
Long Term Debt		--	--	--	--
Net Pension Liability		--	6,132,954	6,132,954	5,747,658
Deposits Payable	50,385	--	14,253	64,638	57,313
Due To Other Funds		--	--	--	--
Scholarships-Designated Donations		92,240	--	92,240	121,957
Scholarships-Non-designated		283,125	--	283,125	740,254
Donatio					
Deferred Inflows		--	1,606,311	1,606,311	2,169,564
TOTAL LIABILITIES:	50,585	835,601	11,873,245	12,759,431	13,073,116
EQUITY AND OTHER CREDITS:					
Control Accounts	--	--	--	--	--
Fund Balances	--	--	--	--	--
Prior Year Fund Balance	--	--	7,656,383	7,656,383	7,422,869
Endowment Fund-Original	--	--	--	--	--
Endowment Fund-Income	--	--	--	--	--
FB Professional Development	--	--	--	--	--
FB Salary Equity	--	--	--	--	--
FB Capital Equipment	--	--	--	--	--

Governmental Fund Types

	Auxiliary Enterprise	Restricted Funds	Current Unrestricted	Current Year 2018	Prior Year 2017
EQUITY AND OTHER CREDITS:					
FB Investment Gain And Loss		--	--		
Fund Balance Receivables		--	-	-	-
Reserved-Undesignated		--	--		
FBTC Operating Fund Balance		--	--		
Plant Fund Balance		--	--		
Bond Fund Balance		--	--		
Scholarship		--	--		
Fund Balance-Rounding Diff		-	--	-	-
Fund Balances:					
Reserve for Encumbrance	34,638	177,771	1,784,744	1,997,153	2,156,036
Fund Balance	843,610	248,336	3,240,905	4,332,852	4,660,980
Reserve For Operations		--	--		
TOTAL EQUITY AND OTHER CREDITS:	978,249	426,107	12,682,032	13,986,387	14,239,885
TOTAL LIABILITIES, EQUITY AND OTHER CREDITS:	928,834	1,261,707	24,555,277	26,745,818	27,313,001

Wharton County Junior College
 Combined Balance Sheet--All Fund Types and Account Groups
 30-JUN-2018
 (With comparative totals for 30-JUN-2017)
 (amounts expressed in dollars)

Proprietary Fund Types

	Agency Funds	Current Year 2018	Prior Year 2017
ASSETS and OTHER DEBITS:			
ASSETS:			
Cash	123,942	123,942	111,396
Cash Investments	105,121	105,121	103,765
Accounts Receivable	-	-	-
Taxes Receivable			
Local, St & Fed Agency Receivable			
Due From Other Funds			
Prepaid Expense			
Property, Plant & Equipment			
Deferred Outflows			
TOTAL ASSETS AND OTHER DEBITS:	229,063	229,063	215,161
Liabilities, equity and other credits			
LIABILITIES:			
Accounts Payable	4,600	4,600	-
Employee Benefits Payable	-	-	-
Payroll Taxes Payable			
Accrued Liabilities			
Deferred Revenue			
Long Term Debt			
Net Pension Liability			
Deposits Payable	222,652	222,652	214,230
Due To Other Funds			
Scholarships-Designated Donations			
Scholarships-Non-designated			
Donatio			
Deferred Inflows			
TOTAL LIABILITIES:	227,252	227,252	214,230
EQUITY AND OTHER CREDITS:			
Control Accounts	1,811	1,811	931
Fund Balances			
Prior Year Fund Balance			
Endowment Fund-Original			
Endowment Fund-Income			
FB Professional Development			
FB Salary Equity			
FB Capital Equipment			

Wharton County Junior College
 Combined Balance Sheet--All Fund Types and Account Groups
 30-JUN-2018
 (With comparative totals for 30-JUN-2017)
 (amounts expressed in dollars)

19

Proprietary Fund Types

Agency Funds	Current Year 2018	Prior Year 2017
EQUITY AND OTHER CREDITS:		
FB Investment Gain And Loss		
Fund Balance Receivables		
Reserved-Undesignated		
FBTC Operating Fund Balance		
Plant Fund Balance		
Bond Fund Balance		
Scholarship		
Fund Balance-Rounding Diff		
Fund Balances:		
Reserve for Encumbrance		
Fund Balance		
Reserve For Operations		
TOTAL EQUITY AND OTHER CREDITS:	1,811	931
TOTAL LIABILITIES,	229,063	215,161
EQUITY AND OTHER CREDITS:		

Wharton County Junior College
 Combined Balance Sheet--All Fund Types and Account Groups
 30-JUN-2018
 (With comparative totals for 30-JUN-2017)
 (amounts expressed in dollars)

20

Fiduciary Fund Types

	Quasi Endowment Fund	Endowment Funds	Current Year 2018	Prior Year 2017
ASSETS and OTHER DEBITS:				
ASSETS:				
Cash		148,975	148,975	79,004
Cash Investments		10,467,128	10,467,128	9,842,100
Accounts Receivable		16,208	16,208	3,814
Taxes Receivable		--	--	--
Local, St & Fed Agency Receivable		--	--	--
Due From Other Funds		--	--	--
Prepaid Expense		--	--	--
Property, Plant & Equipment		--	--	--
Deferred Outflows		--	--	--
TOTAL ASSETS AND OTHER DEBITS:		10,632,311	10,632,311	9,924,918
Liabilities, equity and other credits				
LIABILITIES:				
Accounts Payable		--	--	--
Employee Benefits Payable		--	--	--
Payroll Taxes Payable		--	--	--
Accrued Liabilities		--	--	--
Deferred Revenue		--	--	--
Long Term Debt		--	--	--
Net Pension Liability		--	--	--
Deposits Payable		--	--	--
Due To Other Funds		--	--	--
Scholarships-Designated Donations		--	--	--
Scholarships-Non-designated		--	--	--
Donatio		--	--	--
Deferred Inflows		--	--	--
TOTAL LIABILITIES:				
EQUITY AND OTHER CREDITS:				
Control Accounts		--	--	--
Fund Balances		--	--	--
Prior Year Fund Balance		--	--	--
Endowment Fund-Original		--	--	--
Endowment Fund-Income		--	--	--
FB Professional Development		--	--	--
FB Salary Equity		--	--	--
FB Capital Equipment		--	--	--

Wharton County Junior College
 Combined Balance Sheet--All Fund Types and Account Groups
 30-JUN-2018
 (With comparative totals for 30-JUN-2017)
 (amounts expressed in dollars)

12

Fiduciary Fund Types

	Quasi Endowment Fund	Endowment Funds	Current Year 2018	Prior Year 2017
EQUITY AND OTHER CREDITS:				
FB Investment Gain And Loss		--		
Fund Balance Receivables		--		
Reserved-Undesignated		--		
FBTC Operating Fund Balance		--		
Plant Fund Balance		--		
Bond Fund Balance		--		
Scholarship		--		
Fund Balance-Rounding Diff		--		
Fund Balances:				
Reserve for Encumbrance		--		
Fund Balance		10,632,311	10,632,311	9,924,918
Reserve For Operations		--		
TOTAL EQUITY AND OTHER CREDITS:		10,632,311	10,632,311	9,924,918
TOTAL LIABILITIES, EQUITY AND OTHER CREDITS:		10,632,311	10,632,311	9,924,918

Wharton County Junior College
 Combined Balance Sheet--All Fund Types and Account Groups
 30-JUN-2018
 (With comparative totals for 30-JUN-2017)
 (amounts expressed in dollars)

22

Account Groups

	Repair and Replacement	Debt Retirement Bond Fund	Investment in Plant Fund	Unexpended Plant Fund	Current Year 2018	Prior Year 2017
ASSETS and OTHER DEBITS:						
ASSETS:						
Cash	9,280,564	255	--	-9,226,465	54,354	847,143
Cash Investments		370,559	--	16,399,843	16,770,403	20,492,693
Accounts Receivable		--	--	29,925	29,925	31,424
Taxes Receivable		--	--	--	--	--
Local, St & Fed Agency Receivable		--	--	--	--	--
Due From Other Funds		--	--	--	--	--
Prepaid Expense		--	--	--	--	--
Property, Plant & Equipment		--	31,917,597	--	31,917,597	26,138,593
Deferred Outflows		--	--	--	--	--
TOTAL ASSETS AND OTHER DEBITS:	9,280,564	370,814	31,917,597	7,203,303	48,772,278	47,509,853
Liabilities, equity and other credits						
LIABILITIES:						
Accounts Payable	--	--	--	693,845	693,845	4,418
Employee Benefits Payable	--	--	--	--	--	--
Payroll Taxes Payable	--	--	--	--	--	--
Accrued Liabilities	--	--	--	--	--	22,812
Deferred Revenue	--	--	--	--	--	--
Long Term Debt	--	--	1,692,919	--	1,692,919	1,998,503
Net Pension Liability	--	--	--	--	--	--
Deposits Payable	--	--	--	--	--	--
Due To Other Funds	--	--	--	--	--	137,783
Scholarships-Designated Donations	--	--	--	--	--	--
Scholarships-Non-designated	--	--	--	--	--	--
Donatio						
Deferred Inflows	--	--	--	--	--	--
TOTAL LIABILITIES:			1,692,919	693,845	2,386,764	2,163,516
EQUITY AND OTHER CREDITS:						
Control Accounts	--	--	--	--	--	--
Fund Balances	--	--	--	--	--	--
Prior Year Fund Balance	--	--	--	--	--	--
Endowment Fund-Original	--	--	--	--	--	--
Endowment Fund-Income	--	--	--	--	--	--
FB Professional Development	--	--	--	--	--	--
FB Salary Equity	--	--	--	--	--	--
FB Capital Equipment	--	--	24,757,228	--	24,757,228	17,720,849

Wharton County Junior College
 Combined Balance Sheet--All Fund Types and Account Groups
 30-JUN-2018
 (With comparative totals for 30-JUN-2017)
 (amounts expressed in dollars)

23

Account Groups

	Repair and Replacement	Debt Retirement Bond Fund	Investment in Plant Fund	Unexpended Plant Fund	Current Year 2018	Prior Year 2017
EQUITY AND OTHER CREDITS:						
FB Investment Gain And Loss		--	--	--		
Fund Balance Receivables		--	--	--		
Reserved-Undesignated		--	--	--		
FBTC Operating Fund Balance		--	--	--		
Plant Fund Balance		--	--	--		
Bond Fund Balance		--	--	--		
Scholarship		--	--	--		
Fund Balance-Rounding Diff		--	--	--		
Fund Balances:						
Reserve for Encumbrance		--	--	4,076,692	4,076,692	7,989,555
Fund Balance	8,596,346	370,814	7,214,920	1,369,513	17,551,594	19,635,933
Reserve For Operations		--	--	--		
TOTAL EQUITY AND OTHER CREDITS:	8,596,346	370,814	31,972,148	5,446,205	46,385,514	45,346,337
TOTAL LIABILITIES, EQUITY AND OTHER CREDITS:	8,596,346	370,814	33,665,067	6,140,050	48,772,278	47,509,853

24

Memorandum Only

	Current Year 2018	Prior Year 2017
ASSETS and OTHER DEBITS:		
ASSETS:		
Cash	2,748,603	4,628,171
Cash Investments	44,768,345	47,224,334
Accounts Receivable	4,566,152	4,208,551
Taxes Receivable	394,687	349,322
Local, St & Fed Agency Receivable	6,211	8,275
Due From Other Funds		137,783
Prepaid Expense		
Property, Plant & Equipment	31,917,597	26,138,593
Deferred Outflows	1,977,874	2,267,905
TOTAL ASSETS AND OTHER DEBITS:	86,379,470	84,962,934
Liabilities, equity and other credits		
LIABILITIES:		
Accounts Payable	916,024	-60,165
Employee Benefits Payable	166,725	163,723
Payroll Taxes Payable	1,373	-
Accrued Liabilities		22,812
Deferred Revenue	4,194,485	4,137,231
Long Term Debt	1,692,919	1,998,503
Net Pension Liability	6,132,954	5,747,658
Deposits Payable	287,290	271,543
Due To Other Funds		137,783
Scholarships-Designated Donations	92,240	121,957
Scholarships-Non-designated	283,125	740,254
Donatio		
Deferred Inflows	1,606,311	2,169,564
TOTAL LIABILITIES:	15,373,446	15,450,863
EQUITY AND OTHER CREDITS:		
Control Accounts	1,811	931
Fund Balances		
Prior Year Fund Balance	7,656,383	7,422,869
Endowment Fund-Original		
Endowment Fund-Income		
FB Professional Development		
FB Salary Equity		
FB Capital Equipment	24,757,228	17,720,849
FB Investment Gain And Loss		
Fund Balance Receivables	-	-
Reserved-Undesignated		
FBTC Operating Fund Balance		

REPORT FGRCOBS
COAS: W
FISCAL YEAR: 18

Wharton County Junior College
Combined Balance Sheet--All Fund Types and Account Groups
30-JUN-2018
(With comparative totals for 30-JUN-2017)
(amounts expressed in dollars)

RUN DATE: 07/09/2018
TIME: 11:34:50 AM
PAGE: 10

52

Memorandum Only

	Current Year 2018	Prior Year 2017
Plant Fund Balance		
Bond Fund Balance		
Scholarship		
Fund Balance-Rounding Diff	-	-
Fund Balances:		
Reserve for Encumbrance	6,073,845	10,145,591
Fund Balance	32,516,756	34,221,831
Reserve For Operations		
TOTAL EQUITY AND OTHER CREDITS:	71,006,023	69,512,071
TOTAL LIABILITIES, EQUITY AND OTHER CREDITS:	86,379,470	84,962,934

INVESTMENTS

June 30, 2018

WHARTON COUNTY JUNIOR COLLEGE
INVESTMENT IN TEXPOOL
June 30, 2018
MONTHLY INTEREST RATE 1.8110%

		AVERAGE	END-OF-		YEAR-TO-
	ACCOUNT	DAILY	MONTH	MONTHLY	DATE
FUND	NUMBER	BALANCE	BALANCE	EARNINGS	EARNINGS
UNRESTRICTED	2411100002	7,707,954.53	8,237,146.66	11,488.57	\$ 90,011.40
AUXILIARY	2411100001	710,383.84	\$711,370.67	1,057.32	7,997.83
RESTRICTED	2411100017	203,849.26	204,132.47	303.44	1,460.11
SCHOLARSHIP	2411100019	471,093.92	471,748.37	701.20	7,530.16
ENDOWMENT	2411100014	705,116.18	706,095.67	1,049.45	10,307.34
PLANT	2411100015	732,193.63	733,210.71	1,089.73	6,055.60
AGENCY	2411100016	104,975.07	105,120.89	156.24	1,181.84
92 RESERVE	2411100018	370,045.19	370,559.25	550.78	4,166.14
			\$11,539,384.69	\$16,396.73	\$128,710.42

**WHARTON COUNTY JUNIOR COLLEGE
HISTORY OF TEXPOOL INTEREST RATES**

MONTH	2004	2005	2006	2007	2008	2009	2010	2011	2012	2013	2014	2015	2016	2017	2018
JANUARY	1.0187%	2.2325%	4.2714%	5.2718%	4.2460%	0.9529%	0.1630%	0.1587%	0.0875%	0.0986%	0.0273%	0.0465%	0.2674%	0.5385%	1.2989%
FEBRUARY	1.0270%	2.4406%	4.4833%	5.2802%	3.4374%	0.6690%	0.1512%	0.1470%	0.0903%	0.0935%	0.0283%	0.0441%	0.3010%	0.5591%	1.3438%
MARCH	1.0280%	2.5708%	4.5697%	5.2933%	2.9723%	0.5788%	0.1577%	0.1461%	0.1150%	0.1047%	0.0299%	0.0480%	0.3273%	0.6222%	1.5156%
APRIL	1.0162%	2.7591%	4.7397%	5.2738%	2.4471%	0.4762%	0.1662%	0.1122%	0.1110%	0.1022%	0.0336%	0.0524%	0.3380%	0.7121%	1.6704%
MAY	1.0240%	2.9563%	4.9024%	5.2568%	2.2812%	0.4326%	0.1935%	0.0838%	0.1246%	0.0715%	0.0244%	0.0553%	0.3399%	0.7689%	1.7159%
JUNE	1.0623%	3.0583%	5.0021%	5.2884%	2.2635%	0.3939%	0.2078%	0.0793%	0.1395%	0.0576%	0.0284%	0.0575%	0.3633%	0.8817%	1.8110%
JULY	1.2557%	3.2577%	5.2258%	5.2760%	2.2460%	0.3384%	0.2259%	0.0665%	0.1316%	0.0531%	0.0313%	0.0630%	0.3690%	0.9714%	
AUGUST	1.4121%	3.4512%	5.2355%	5.2473%	2.2878%	0.3380%	0.2279%	0.0851%	0.1313%	0.0437%	0.0353%	0.0716%	0.3737%	0.9989%	
SEPTEMBER	1.5424%	3.6028%	5.2648%	5.1330%	2.4068%	0.2822%	0.2165%	0.0929%	0.1572%	0.0394%	0.0333%	0.0850%	0.3799%	1.0151%	
OCTOBER	1.7129%	3.7823%	5.2831%	4.9280%	1.9762%	0.2095%	0.2036%	0.0839%	0.1657%	0.0498%	0.0268%	0.0966%	0.3828%	1.0318%	
NOVEMBER	1.8491%	3.9888%	5.2780%	4.7144%	1.8207%	0.2112%	0.1917%	0.1033%	0.1564%	0.0446%	0.0286%	0.1105%	0.3987%	1.0506%	
DECEMBER	2.0685%	4.1676%	5.2859%	4.5565%	1.4855%	0.2090%	0.1587%	0.0871%	0.1506%	0.0372%	0.0418%	0.1863%	0.4570%	1.1764%	

INVESTMENT REPORT

3RD QUARTER 2018

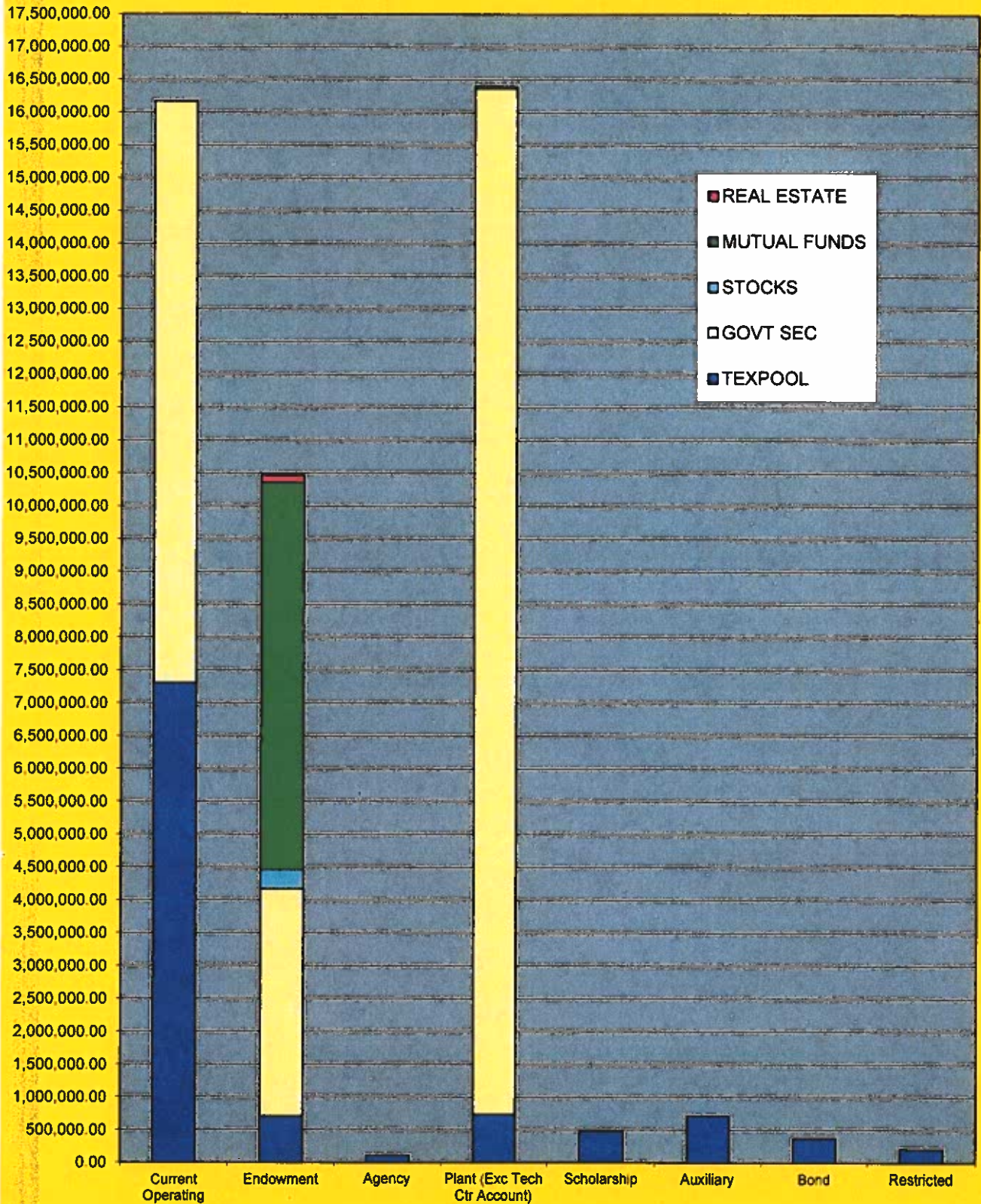
Period Beginning 03/01/18 Ending 05/31/18

May 31, 2018

The report that follows details the investments and earnings made by Wharton County Junior College (the College). Investments for all funds excluding the Endowment fund were made according to the College's investment policy dated August 15, 2017 and reflect compliance with the Texas Public Funds Investments Act, Chapter 2256.023. Investments for the Endowment fund were made according to the College's Endowment Fund Investment Policy.

Summarized below are the investments made by type of investment. Please see the attached schedules for further detail. Please direct all questions to Bryce Kocian, Investment Officer and Vice-President of Administrative Services, Wharton County Junior College, 911 Boling Highway, Wharton, Texas 77488. Phone: 979/532-6315 E-mail: brycek@wcjc.edu

INVESTMENTS BY FUND & TYPE



TOTAL INVESTMENT IN (as of period ending date 05/31/18)

	INCOME AMOUNT THIS QUARTER (Earned & Accrued)	QUARTER ENDING BOOK/MARKET VALUE (Includes gains and losses)
TEXPOOL	\$ 52,766.49	\$ 10,606,560.68
GOVERNMENT SECURITIES	\$ 109,436.88	\$ 27,960,229.60
CERTIFICATES OF DEPOSIT	\$ 0.00	\$ 0.00
STOCKS	\$ 4,104.77	\$ 320,000.09
MUTUAL FUNDS	\$ 11,088.71	\$ 5,897,106.78
REAL ESTATE	\$ 0.00	\$ 111,000.00

EXPLANATION OF REPORT TERMS

This report reflects the market value at the end of the stated period. This market value, what an independent, willing buyer will pay for the asset being offered, is based on information from various sources, usually a report by the firm from which the security was obtained or the Wall Street Journal. Yields are obtained from the same source as the market value. Starting with the F/Y 1997 financial statements all investments are stated at fair value, as required by GASB 31 and income is accrued each quarter.

Bryce D. Kocian
Bryce D. Kocian, Investment Officer

Cynthia Ward
Cynthia Ward, Investment Officer



Wharton County Junior College
911 Boling Highway • Wharton, Texas 77488 • (979) 532-4560

FY 18											
SUMMARY											
FUND	S&P CREDIT RATING	MATURITY DATE	BEGINNING BOOK VALUE	BEGINNING MARKET VALUE	ADDITIONS	CHANGES DEDUCTIONS	ENDING MARKET VALUE	INCOME ACCRUED OR RECEIVED	ENDING BOOK VALUE	MATURITY VALUE	YIELD
CURRENT OPERATING											
TEXPOOL	AAAm	N/A	8,524,216.79	8,524,216.79	2,785,014.02	(4,000,000.00)	7,309,230.81	37,150.17	7,309,230.81	N/A	1.63%
GOVT SECUR-FHLB 06/13/18	AA+	06/13/18	1,047,451.65	1,047,451.65	2,277.45	0.00	1,049,729.10	2,858.31	1,049,729.10	1,050,000.00	1.79%
GOVT SECUR-FFCB 6.06.19	AA+	06/06/19	986,446.00	986,446.00	2,363.00	0.00	988,809.00	3,276.71	988,809.00	1,000,000.00	1.22%
GOVT SECUR-FHLMC 1.26.22	AA+	01/26/22	976,399.00	976,399.00	1,309.00	0.00	977,708.00	5,419.17	977,708.00	1,000,000.00	2.15%
GOVT SECUR-FFCB 03/01/21	AA+	03/01/21	973,360.00	973,360.00	0.00	(2,328.00)	971,032.00	4,226.71	971,032.00	1,000,000.00	1.65%
GOVT SECUR-FFCB 07.13.20	AA+	07/13/20	971,531.00	971,531.00	934.00	0.00	972,465.00	2,999.45	972,465.00	1,000,000.00	1.23%
GOVT SECUR-FHLB 04/13/21	AA+	04/13/21	963,870.00	963,870.00	1,545.00	0.00	965,415.00	3,750.68	965,415.00	1,000,000.00	1.55%
GOVT SECUR-FFCB 10.11.19	AA+	10/11/19	981,233.00	981,233.00	1,628.00	0.00	982,861.00	2,838.36	982,861.00	1,000,000.00	1.17%
GOVT SECUR-FHLB 11.09.21	AA+	11/09/21	959,828.00	959,828.00	1,829.00	0.00	961,657.00	3,842.47	961,657.00	1,000,000.00	1.80%
GOVT SECUR-FNMA 05/30/19	AA+	05/30/19	988,899.00	988,899.00	1,047.00	0.00	989,946.00	3,202.06	989,946.00	1,000,000.00	1.25%
TOTAL GOVT SECUR			8,849,017.65	8,849,017.65	12,932.45	(2,328.00)	8,859,622.10	32,413.92	8,859,622.10	9,050,000.00	1.53%
TOTAL INVESTMENT IN FUND			17,373,234.44	17,373,234.44	2,797,946.47	(4,002,328.00)	16,168,852.91	69,564.09	16,168,852.91	9,050,000.00	1.58%
ENDOWMENT											
TEXPOOL	AAAm	N/A	1,701,089.23	1,701,089.23	3,956.99	(1,000,000.00)	705,046.22	3,956.99	705,046.22	N/A	1.63%
STOCK-NCR	BB+	N/A	594.00	594.00	0.00	(52.20)	541.80	0.00	541.80	N/A	N/A
STOCK-TERADATA	Not Rated	N/A	662.76	662.76	54.90	0.00	717.66	0.00	717.66	N/A	N/A
STOCK-Bankamerica Corp(Nations) (Barnett)	A-	N/A	7,575.60	7,575.60	0.00	(722.16)	6,853.44	56.64	6,853.44	N/A	N/A
STOCK-Team Inc	Not Rated	N/A	2,779.50	2,779.50	833.00	0.00	3,612.50	0.00	3,612.50	N/A	N/A
STOCK-VALERO	BBB	N/A	18,084.00	18,084.00	6,156.00	0.00	24,240.00	600.00	24,240.00	N/A	N/A
STOCK-TENNECO	BB	N/A	1,103.55	1,103.55	0.00	(175.77)	927.78	10.50	927.78	N/A	N/A
STOCK-OCCIDENTAL	A	N/A	33,587.20	33,587.20	9,523.20	0.00	43,110.40	788.48	43,110.40	N/A	N/A
STOCK-CA RESOURCES CORP	CCC+	N/A	352.75	352.75	565.75	0.00	918.50	0.00	918.50	N/A	N/A
STOCK-PG&E	BBB	N/A	2,259.95	2,259.95	123.20	0.00	2,383.15	0.00	2,383.15	N/A	N/A
STOCK-EXXON/MOBIL	AA+	N/A	15,148.00	15,148.00	1,100.00	0.00	16,248.00	308.00	16,248.00	N/A	N/A
STOCK-TENET HEALTHCARE	B	N/A	700.40	700.40	504.22	0.00	1,204.62	0.00	1,204.62	N/A	N/A
STOCK-WALMART	AA	N/A	36,004.00	36,004.00	0.00	(2,988.00)	33,016.00	412.00	33,016.00	N/A	N/A
STOCK-DUKE ENERGY	A-	N/A	21,773.26	21,773.26	525.98	0.00	22,299.24	514.42	22,299.24	N/A	N/A
STOCK-ENBRIDGE,INC	BBB+	N/A	4,804.82	4,804.82	0.00	(113.25)	4,691.57	113.35	4,691.57	N/A	N/A
STOCK-IBM	A+	N/A	9,349.80	9,349.80	0.00	(871.20)	8,478.60	180.00	8,478.60	N/A	N/A
STOCK-APPLE COMPUTER	AA+	N/A	99,747.20	99,747.20	4,900.00	0.00	104,647.20	705.60	104,647.20	N/A	N/A
STOCK-ARKEMA	BBB	N/A	786.30	786.30	0.00	(56.16)	730.14	0.00	730.14	N/A	N/A
STOCK-TOTAL S.A.	A+	N/A	15,079.54	15,079.54	1,053.36	0.00	16,132.90	280.96	16,132.90	N/A	N/A
TOTAL STOCK			270,392.63	270,392.63	25,339.61	(4,978.74)	290,753.50	3,969.95	290,753.50	N/A	0.00%
MUTUAL FUND-DREYFUS MDCP INDX	NA	N/A	2,392,060.34	2,392,060.34	111,777.81	0.00	2,503,838.15	1,857.66	2,503,838.15	N/A	11.53%
MUTUAL FUND-FIDELITY SEL UTIL	NA	N/A	728,833.50	728,833.50	67,043.10	0.00	795,876.60	3,551.58	795,876.60	N/A	7.32%
MUTUAL FUND-FIDELITY SMALL CAP GROV	NA	N/A	957,996.19	957,996.19	76,935.60	0.00	1,034,931.79	0.00	1,034,931.79	N/A	9.07%
MUTUAL FUND-VOYA CORP LEAD TRST	NA	N/A	722,781.18	722,781.18	30,990.62	0.00	753,771.80	0.00	753,771.80	N/A	2.22%
MUTUAL FUND-VNGRD HI DIV YIELD INDX	NA	N/A	812,905.39	812,905.39	5,679.47	(9,896.42)	808,688.44	5,679.47	808,688.44	N/A	3.78%
			5,614,576.60	5,614,576.60	292,426.60	(9,896.42)	5,897,106.78	11,088.71	5,897,106.78	N/A	8.10%
GOVT SECUR-FFCB 04.03.20	AA+	04/03/20	0.00	0.00	2,000,000.00	(4,320.00)	1,995,680.00	7,722.74	1,995,680.00	2,000,000.00	2.43%
GOVT SECUR-FHLB 12.02.19	AA+	12/02/19	492,962.00	492,962.00	284.50	0.00	493,246.50	1,890.41	493,246.50	500,000.00	1.50%
GOVT SECUR-FHLMC 12.30.21	AA+	12/30/21	968,673.00	968,673.00	5,622.00	0.00	974,295.00	5,167.13	974,295.00	1,000,000.00	2.05%
GOVT SECUR-FFCB 03/26/18	AA+	03/26/18	1,199,659.20	1,199,659.20	0.00	(1,199,659.20)	0.00	940.27	0.00	1,200,000.00	1.04%
TOTAL GOVT SECUR			2,661,294.20	2,661,294.20	2,005,906.50	(1,203,979.20)	3,463,221.50	15,720.55	3,463,221.50	4,700,000.00	1.90%
REAL ESTATE			111,000.00	111,000.00	0.00	0.00	111,000.00	0.00	111,000.00	N/A	N/A
TOTAL INVESTMENT IN FUND			10,358,352.66	10,358,352.66	2,327,629.70	(2,218,854.36)	10,467,128.00	34,736.20	10,467,128.00	4,700,000.00	4.59%

FUND	S&P	MATURITY	BEGINNING	BEGINNING	CHANGES	ENDING	INCOME	ENDING				
	RATING	DATE	BOOK	MARKET	ADDITIONS	DEDUCTIONS	ACCRUED	BOOK	MATURITY	YIELD		
			VALUE	VALUE			OR RECEIVED	VALUE	VALUE			
PLANT												
TEXPOOL (except Tech Center acct)	AAAm	N/A	229,152.37	229,152.37	1,002,968.61	(500,000.00)		732,120.98	2,968.61	732,120.98	N/A	1.63%
GOVT SECUR-FHLB 06.14.21	AA+	06/14/21	968,697.00	968,697.00	0.00	(2,131.00)		966,566.00	4,083.29	966,566.00	1,000,000.00	1.62%
GOVT SECUR-FFCB 12/02/19	AA+	12/02/19	988,999.00	988,999.00	293.00	0.00		989,292.00	4,133.70	989,292.00	1,000,000.00	1.64%
GOVT SECUR-FHLMC 08/01/19	AA+	08/01/19	986,985.00	986,985.00	760.00	0.00		987,745.00	3,150.68	987,745.00	1,000,000.00	1.50%
GOVT SECUR-FNMA 03/24/21	AA+	03/24/21	970,804.00	970,804.00	959.00	0.00		971,763.00	3,842.47	971,763.00	1,000,000.00	1.50%
GOVT SECUR-FNMA 05/24/19	AA+	05/24/19	988,446.00	988,446.00	1,686.00	0.00		990,132.00	3,073.98	990,132.00	1,000,000.00	1.20%
GOVT SECUR-FFCB 05/25/21	AA+	05/25/21	971,169.00	971,169.00	0.00	(206.00)		970,963.00	4,252.33	970,963.00	1,000,000.00	1.66%
GOVT SECUR-FFCB 04/13/20	AA+	04/13/20	979,793.00	979,793.00	0.00	(1,439.00)		978,354.00	3,547.95	978,354.00	1,000,000.00	1.40%
GOVT SECUR-FNMA 11/25/20	AA+	11/25/20	976,895.00	976,895.00	334.00	0.00		977,229.00	4,610.96	977,229.00	1,000,000.00	1.80%
GOVT SECUR-FFCB 07.14.21	AA+	07/14/21	958,065.00	958,065.00	4,173.00	0.00		962,238.00	3,730.41	962,238.00	1,000,000.00	1.49%
GOVT SECUR-FHLB 04/19/21	AA+	04/19/21	969,843.00	969,843.00	1,074.00	0.00		970,917.00	4,118.15	970,917.00	1,000,000.00	1.63%
GOVT SECUR-FHLB 02/10/20	AA+	02/10/20	980,074.00	980,074.00	2,080.00	0.00		982,154.00	3,453.15	982,154.00	1,000,000.00	1.37%
GOVT SECUR-FHLB 10/28/20	AA+	10/28/20	978,266.00	978,266.00	701.00	0.00		978,967.00	4,358.91	978,967.00	1,000,000.00	1.74%
GOVT SECUR-FFCB 10/19/18	AA+	10/19/18	993,782.00	993,782.00	2,341.00	0.00		996,123.00	2,711.64	996,123.00	1,000,000.00	1.09%
GOVT SECUR-FNMA 02/24/21	AA+	02/24/21	974,613.00	974,613.00	547.00	0.00		975,160.00	4,032.88	975,160.00	1,000,000.00	1.60%
GOVT SECUR-FHLB 10/19/20	AA+	10/19/20	978,603.00	978,603.00	0.00	(61.00)		978,542.00	4,308.21	978,542.00	1,000,000.00	1.70%
GOVT SECUR-FFCB 11.15.21	AA+	11/15/21	960,425.00	960,425.00	816.00	0.00		961,241.00	3,893.70	961,241.00	1,000,000.00	1.52%
TOTAL GOVT SECURITIES			15,625,459.00	15,625,459.00	15,764.00	(503,837.00)		15,637,386.00	61,302.41	15,637,386.00	16,000,000.00	1.53%
STOCK- HEWLETT PACKARD	BBB	N/A	1,847.81	1,847.81	0.00	(107.44)		1,740.37	22.00	1,740.37	N/A	N/A
STOCK- HP ENTERPRISE CO	BBB	N/A	1,468.61	1,468.61	0.00	(264.65)		1,203.96	11.86	1,203.96	N/A	N/A
STOCK- DXC TECHNOLOGY (Spin off of HP)	BBB	N/A	615.24	615.24	0.00	(62.58)		552.66	2.16	552.66	N/A	N/A
STOCK- MICRO FOCUS (Spin off of HPE - 10)	BB-	N/A	280.60	280.60	0.00	(103.60)		177.00	3.36	177.00	N/A	N/A
STOCK- COCA COLA	BBB	N/A	1,469.48	1,469.48	0.00	(7.48)		1,462.00	25.84	1,462.00	N/A	N/A
STOCK- DEVON ENERGY	BBB	N/A	17,788.60	17,788.60	6,322.00	0.00		24,110.60	69.60	24,110.60	N/A	N/A
TOTAL STOCK			23,470.34	23,470.34	6,322.00	(545.75)		29,246.59	134.82	29,246.59	N/A	N/A
TOTAL INVESTMENT IN FUND			15,878,081.71	15,878,081.71	1,025,054.61	(1,004,382.75)		16,398,753.57	64,405.84	16,398,753.57	16,000,000.00	1.53%
BOND												
TEXPOOL	AAAm	N/A	368,489.14	368,489.14	1,519.33	0.00		370,008.47	1,519.33	370,008.47	N/A	1.63%
AUXILIARY												
TEXPOOL	AAAm	N/A	707,396.68	707,396.68	2,916.67	0.00		710,313.35	2,916.67	710,313.35	N/A	1.63%
SCHOLARSHIP												
TEXPOOL	AAAm	N/A	967,901.42	967,901.42	3,145.75	(500,000.00)		471,047.17	3,145.75	471,047.17	N/A	1.63%
AGENCY												
TEXPOOL	AAAm	N/A	104,533.64	104,533.64	431.01	0.00		104,964.65	431.01	104,964.65	N/A	1.63%
RESTRICTED												
TEXPOOL	AAAm	N/A	143,860.07	143,860.07	94,710.96	(34,742.00)		203,829.03	677.96	203,829.03	N/A	1.63%
TOTAL STOCKS			293,862.97	293,862.97	31,661.61	(5,624.49)		320,000.09	4,104.77	320,000.09	N/A	0.00%
TOTAL MUTUAL FUNDS			5,614,576.60	5,614,576.60	292,426.60	(9,896.42)		5,897,106.78	11,088.71	5,897,106.78	N/A	8.10%
TOTAL GOVT SECURITIES			27,135,770.85	27,135,770.85	2,034,602.95	(1,710,144.20)		27,960,229.60	109,436.88	27,960,229.60	29,750,000.00	1.49%
TOTAL CD'S			0.00	0.00	0.00	0.00		0.00	0.00	0.00	0.00	0.00%
TOTAL TEXPOOL			12,746,639.34	12,746,639.34	3,894,663.34	(6,034,742.00)		10,606,560.68	52,766.49	10,606,560.68	N/A	1.63%
TOTAL MONEY MARKET			(0.00)	(0.00)	0.00	0.00		(0.00)	0.00	(0.00)	N/A	0.00%
TOTAL REAL ESTATE			111,000.00	111,000.00	0.00	0.00		111,000.00	0.00	111,000.00	N/A	N/A
TOTAL ALL INVESTMENTS			45,901,849.76	45,901,849.76	6,253,354.60	(7,760,307.11)		44,894,897.15	177,396.85	44,894,897.15	N/A	2.21%



Wharton County Junior College
 911 Boling Highway • Wharton, Texas 77488 • (979) 532-4560

INVESTMENT REPORT FOR THE THIRD QUARTER FISCAL YEAR 2018

Period includes 03/01/2018 - 05/31/2018

FUND/INVESTMENT	BEGINNING	CHANGES		ENDING	ENDING	PREVIOUS	INCOME	YIELD	
	MARKET	ADDITIONS	DEDUCTIONS	MARKET	BOOK	YEAR - ENDING			
	VALUE			VALUE	VALUE	BOOK VALUE FY-17			TYPE
CURRENT OPERATING									
INVESTMENT IN TEXPOOL	8,524,216.79	2,785,014.02	(4,000,000.00)	7,309,230.81	7,309,230.81	6,329,049.57	INTEREST	37,150.17	1.63%
INVESTMENT IN GOVERNMENT SECURITIES	8,849,017.65	12,932.45	(2,328.00)	8,859,622.10	8,859,622.10	9,006,436.55	INTEREST	32,413.92	1.53%
TOTAL INVESTMENT IN FUND	17,373,234.44	2,797,946.47	(4,002,328.00)	16,168,852.91	16,168,852.91	15,335,486.12		69,564.09	1.58%
WEIGHTED AVERAGE MATURITY OPERATING FUNDS (DAYS)	322.54								
ENDOWMENT									
INVESTMENT IN TEXPOOL	1,701,089.23	3,956.99	(1,000,000.00)	705,046.22	705,046.22	695,788.33	INTEREST	3,956.99	1.63%
INVESTMENT IN GOVERNMENT SECURITIES	2,661,294.20	2,005,906.50	(1,203,979.20)	3,463,221.50	3,463,221.50	3,698,430.00	INTEREST	15,720.55	1.90%
INVESTMENT IN STOCKS	270,392.63	25,339.61	(4,978.74)	290,753.50	290,753.50	251,624.31	DIVIDENDS	3,969.95	0.00%
INVESTMENT IN MUTUAL FUNDS	5,614,576.60	292,426.60	(9,896.42)	5,897,106.78	5,897,106.78	5,224,740.91	DIVIDENDS	11,088.71	8.10%
INVESTMENT IN REAL ESTATE	111,000.00	0.00	0.00	111,000.00	111,000.00	111,000.00	LEASE	0.00	
TOTAL INVESTMENT IN FUND	10,358,352.66	2,327,629.70	(2,218,854.36)	10,467,128.00	10,467,128.00	9,981,583.55		34,736.20	4.59%
WEIGHTED AVERAGE MATURITY ENDOWMENT FUND (DAYS)	674.01								
PLANT									
INVESTMENT IN TEXPOOL (Excluding Tech Center)	229,152.37	1,002,968.61	(500,000.00)	732,120.98	732,120.98	1,227,155.11	INTEREST	2,968.61	1.63%
INVESTMENT IN GOVERNMENT SECURITIES	15,625,459.00	15,764.00	(503,837.00)	15,637,386.00	15,637,386.00	17,902,759.00	INTEREST	61,302.41	1.53%
INVESTMENT IN STOCKS	23,470.34	6,322.00	(545.75)	29,246.59	29,246.59	22,875.33	DIVIDENDS	134.82	
TOTAL INVESTMENT IN FUND	15,878,081.71	1,025,054.61	(1,004,382.75)	16,398,753.57	16,398,753.57	19,152,789.44		64,405.84	1.53%

FUND/INVESTMENT	BEGINNING	CHANGES		ENDING	ENDING	PREVIOUS	INCOME	YIELD	
	MARKET	ADDITIONS	DEDUCTIONS	MARKET	BOOK	YEAR - ENDING			
	VALUE			VALUE	VALUE	BOOK VALUE FY 17			TYPE
BOND									
INVESTMENT IN TEXPOOL	368,489.14	1,519.33	0.00	370,008.47	370,008.47	366,393.11	INTEREST	1,519.33	1.63%
TOTAL INVESTMENT IN FUND	368,489.14	1,519.33	0.00	370,008.47	370,008.47	366,393.11		1,519.33	
WEIGHTED AVERAGE MATURITY PLANT & BOND FUNDS (DAYS)	763.58								
AGENCY									
INVESTMENT IN TEXPOOL	104,533.64	431.01	0.00	104,964.65	104,964.65	103,939.05	INTEREST	431.01	1.63%
TOTAL INVESTMENT IN FUND	104,533.64	431.01	0.00	104,964.65	104,964.65	103,939.05		431.01	1.63%
AUXILIARY									
INVESTMENT IN TEXPOOL	707,396.68	2,916.67	0.00	710,313.35	710,313.35	703,372.84	INTEREST	2,916.67	1.63%
TOTAL INVESTMENT IN FUND	707,396.68	2,916.67	0.00	710,313.35	710,313.35	703,372.84		2,916.67	1.63%
SCHOLARSHIP									
INVESTMENT IN TEXPOOL	967,901.42	3,145.75	(500,000.00)	471,047.17	471,047.17	561,418.21	INTEREST	3,145.75	1.63%
TOTAL INVESTMENT IN FUND	967,901.42	3,145.75	(500,000.00)	471,047.17	471,047.17	561,418.21		3,145.75	1.63%
RESTRICTED									
INVESTMENT IN TEXPOOL	143,860.07	94,710.96	(34,742.00)	203,829.03	203,829.03	26,487.36	INTEREST	677.96	1.63%
TOTAL INVESTMENT IN FUND	143,860.07	94,710.96	(34,742.00)	203,829.03	203,829.03	26,487.36		677.96	1.63%

	This period		Previous year	
TOTAL	44,894,897.15	44,894,897.15	46,231,469.68	TOTAL 177,396.85 2.21%
stocks	320,000.09	320,000.09	274,499.64	stocks 4,104.77
mutual funds	5,897,106.78	5,897,106.78	5,224,740.91	mutual funds 11,088.71
govt sec	27,960,229.60	27,960,229.60	30,607,625.55	govt sec 109,436.88
CD's	0.00	0.00	0.00	CD's 0.00
Texpool	10,606,560.68	10,606,560.68	10,013,603.58	Texpool 52,766.49
Money Market	(0.00)	(0.00)	(0.00)	Prosperity Accou 0.00
Real Estate	111,000.00	111,000.00	111,000.00	Real Estate 0.00
	44,894,897.15	44,894,897.15	46,231,469.68	177,396.85

Wharton County Junior College					
Investment Weighted Average Maturity					
For Quarter Ending May 31, 2018					
INVESTMENT DESCRIPTION	PURCHASE DATE	MATURITY DATE	MATURITY VALUE	DAYS TO MATURITY	WAM (DAYS)
OPERATING FUNDS					
CASH			11,658,523.79	1	0.56
GOVT SECUR-FHLB 313383A68	7/1/2013	6/13/2018	1,050,000.00	13	0.66
GOVT SECUR-FNMA 3136G3QZ1	5/27/2016	5/30/2019	1,000,000.00	364	17.58
GOVT SECUR-FFCB 3133EGCZ6	6/15/2016	6/6/2019	1,000,000.00	371	17.92
GOVT SECUR-FFCB 3133EGXK6	11/9/2016	10/11/2019	1,000,000.00	498	24.05
GOVT SECUR-FFCB 3133EGLB9	7/14/2016	7/13/2020	1,000,000.00	774	37.38
GOVT SECUR-FFCB 3133EFF28	3/1/2016	3/1/2021	1,000,000.00	1,005	48.53
GOVT SECUR-FHLB 3130A7Q81	4/29/2016	4/13/2021	1,000,000.00	1,048	50.61
GOVT SECUR-FHLB 3130A9Z61	11/21/2016	11/9/2021	1,000,000.00	1,258	60.75
GOVT SECUR-FHLMC 3134GAQ31	1/26/2017	1/26/2022	1,000,000.00	1,336	64.51
			20,708,523.79		
WEIGHTED AVERAGE MATURITY DAYS-OPERATING FUNDS					322.54
ENDOWMENT FUNDS					
CASH			848,374.48	1	0.20
GOVT SECUR-FFCB 3133EJTT7	4/3/2018	4/3/2020	2,000,000.00	673	309.54
GOVT SECUR-FHLB 3130AA4M7	12/2/2016	12/2/2019	500,000.00	550	63.24
GOVT SECUR-FHLMC 3134GAZR8	12/30/2016	12/30/2021	1,000,000.00	1,309	301.03
TOTAL ENDOWMENT			4,348,374.48		
WEIGHTED AVERAGE MATURITY DAYS ENDOWMENT FUNDS					674.01
PLANT AND BONDS FUNDS					
CASH			1,192,997.69	1	0.07
GOVT SECUR-FFCB 3133EFJE8	10/19/2015	10/19/2018	1,000,000.00	141	8.20
GOVT SECUR-FNMA 3136G3MC6	5/24/2016	5/24/2019	1,000,000.00	358	20.82
GOVT SECUR-FHLMC 3137EADK2	11/25/2015	8/1/2019	1,000,000.00	427	24.84
GOVT SECUR-FFCB 3133EFRM1	12/2/2015	12/2/2019	1,000,000.00	550	31.99
GOVT SECUR-FHLB 3130A7A70	2/10/2016	2/10/2020	1,000,000.00	620	36.06
GOVT SECUR-FFCB 3133WF2L0	4/13/2016	4/13/2020	1,000,000.00	683	39.73
GOVT SECUR-FHLB 3130A6LQ8	10/19/2015	10/19/2020	1,000,000.00	872	50.72
GOVT SECUR-FHLB 3130A6MH7	11/2/2015	10/28/2020	1,000,000.00	881	51.24
GOVT SECUR-FNMA 3136G2TB3	11/25/2015	11/25/2020	1,000,000.00	909	52.87
GOVT SECUR-FNMA 3136G2XN2	2/26/2016	2/24/2021	1,000,000.00	1,000	58.16
GOVT SECUR-FNMA 3136G3CM5	3/24/2016	3/24/2021	1,000,000.00	1,028	59.79
GOVT SECUR-FHLB 3130A7RL1	4/19/2016	4/19/2021	1,000,000.00	1,054	61.30
GOVT SECUR-FFCB 3133EGBZ7	5/25/2016	5/25/2021	1,000,000.00	1,090	63.40
GOVT SECUR-FHLB 3130A8FC2	6/15/2016	6/14/2021	1,000,000.00	1,110	64.56
GOVT SECUR-FFCB 3133EGLU7	7/14/2016	7/14/2021	1,000,000.00	1,140	66.31
GOVT SECUR-FFCB 3133EGG82	11/15/2016	11/15/2021	1,000,000.00	1,264	73.52
TOTAL PLANT			17,192,997.69		
WEIGHTED AVERAGE MATURITY DAYS PLANT AND BOND FUNDS					763.58

WEIGHTED AVERAGE MATURITY FUND