



Illinois Autism Partnership

# RIVER FOREST SCHOOL DISTRICT 90



# CONTENTS OF THIS PRESENTATION

1. Overview of the Easter Seals/D90 Partnership
2. Current Progress
3. Future Recommendations

# OVERVIEW

Comprehensive Multi Needs (Skills) program review completed in Spring 2019

## Quality Program Domains

- Learning Environment
  - Safety
  - Organization
  - Materials
  - Classroom Set-Up
- Structure/Schedules
  - Visual Schedules
  - Visual Supports
  - Transitions
- Learning Climate
  - Staff-Student Interactions
  - Staff Behaviors
  - Promoting Diversity/School Climate
- Assessment/Individualized Education Program
  - Assessing Student Progress
  - Assessment Process
  - IEP Goals
  - Transition Planning
- Curriculum and Instruction
  - Classroom Instruction
- Teaming
  - Team Training
  - Team Membership
  - Team Meetings
  - Implementation/Decision-Making
- Communication Supports
  - Planning for Communication Opportunities
  - Communication Rich Environment
  - Individualized Communication Instruction
  - Responsiveness to Student Communication
  - Communication Systems and Supports
- Staff/Peer Relations
  - Arranging Social Opportunities
  - Teaching and Modeling Social Skills
  - Personal Hygiene and Relationships (MS/HS)
  - Social Skills Instruction
  - Peer Social Networks
- Behavior
  - Proactive Strategies
  - Behavioral Assessment
  - Behavior Management
  - Data Collection
- Family Involvement
  - Teaming
  - Family Communication
  - Parent Teacher Meetings



# CURRENT PROGRESS

- Full time teachers in Multi Needs program (since Fall 2019)
- Week long training during summer for Multi Needs teachers (Summer 2019 and 2020)
- IEP Goal Writing Professional Development (SY 2019)
- Paraprofessional PD (SY 2019 and SY 2019)
- Specials/Exploratories teachers offered PD (Fall 2019)
- Classroom Restructuring for both schools (Summer 2019)
- Middle School classroom added (Fall 2020)
- COVID Classroom Set Up (Summer 2020)
- Strategies for supporting students remotely (SY 2020)
- Monthly Consultations in each classroom (ongoing)

# FUTURE

## RECOMMENDATIONS

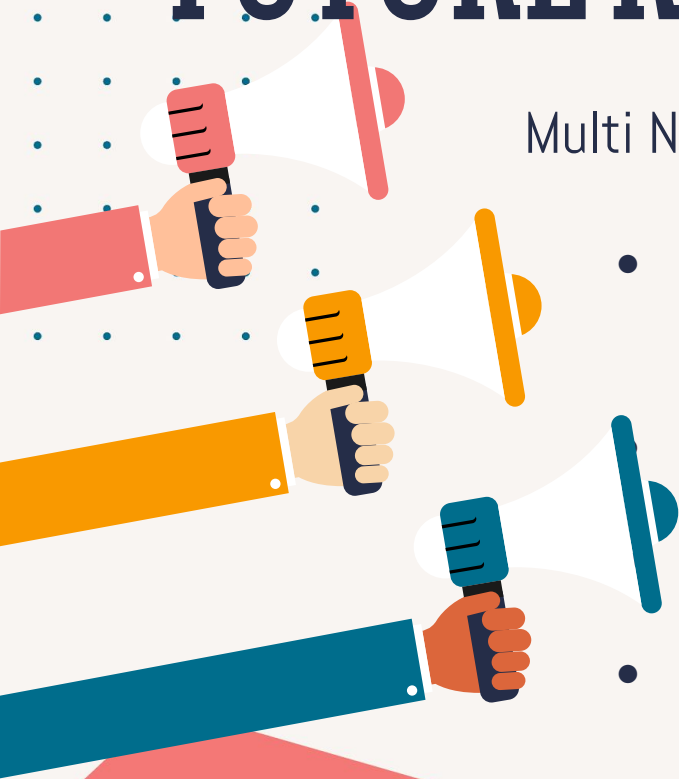
- Professional development/coaching for related service providers, specials and general education teachers in the following areas:
  - Inclusive Practices for Students with IEPs
  - Promoting Greater Independence
    - Structuring the Environment
    - Peer Mediated Instruction and Intervention



# FUTURE RECOMMENDATIONS

Multi Needs Classroom/Staff:

- Continued coaching to build on success and prepare for new students
- Promoting Greater Independence
- Data Collection/Progress Monitoring
- Reinforcement/Communication



# IT TAKES A VILLAGE!

The success of the Multi Needs program would not be possible without the hard work, commitment and efforts of:

- Special Education Teachers
- Related Service Providers
- Education Support Personnel
- General Education Teachers
- Parents
- Administrators

The background features a light beige gradient. On the left, there is a large red polygon and three teal diagonal lines. On the right, there is a grid of small orange dots. At the bottom, there are several light pink geometric shapes.

**Thank You!**  
**Questions?**