



Charter Amendment Request Instructions

The Charter Amendment Request Form, with any additional documentation pertaining to the amendment request, must be received, via email at ade.charterschools@ade.arkansas.gov, at the Arkansas Department of Education at least 35 days prior to the meeting of the Charter Authoring Panel.

Documentation to be Included with ALL Amendment Requests

- Budget projections that include the costs associated with the amendment request and demonstrate that the approval of the request will not place an undue financial burden on the charter
- Current year to date enrollment by race and grade
- Current year to date free and reduced lunch

Additional documentation for requests to add a campus or relocate an existing campus

- Map of present location
- Map of proposed location
- Signed Facilities Utilization Agreement
- Desegregation Analysis

Additional documentation

- Budget projections that include the costs associated with the amendment request and demonstrate that the approval of the request will not place an undue financial burden on the charter
- Current year to date enrollment by race and grade
- Current year to date free and reduced lunch

Documentation to be Included with ALL Amendment Requests

- Budget projections that include the costs associated with the amendment request and demonstrate that the approval of the request will not place an undue financial burden on the charter
- Current year to date enrollment by race and grade
- Current year to date free and reduced lunch



Charter Amendment Request Form

The Charter Amendment Request Form and all required documentation must be received via email (ade.charterschools@ade.arkansas.gov) at the Arkansas Department of Education at least 35 days prior to the Charter Authorizing Panel meeting.

Charter Name: Cabot Panther Academy **LEA:** 4304703

Superintendent or Director: Dr. W. Tony Thurman

Email: tony.thurman@cps.k12.ar.us **Phone:** 501-843-3363

Type of Amendment(s) Requested

Add a New Campus (Must also submit the Facilities Utilization Agreement)

Address: 407 S. Polk St. Cabot, AR 72023

School District: Cabot School District

Relocate Existing Campus (Must also submit the Facilities Utilization Agreement)

Campus Name: _____

Current Address: _____

Proposed Address: _____

School District: _____

Increase Enrollment Cap

Current Cap: _____

Proposed Cap: _____

Change Grade Levels Served

Current Grade Levels Served: 5-12

Proposed Grade Levels Served: K-12

Waiver(s)

Statute/Standard/Rule to be Waived: _____

Rationale for Waiver:

Statute/Standard/Rule to be Waived: _____

Rationale for Waiver:

Statute/Standard/Rule to be Waived: _____

Rationale for Waiver:

Statute/Standard/Rule to be Waived: _____

Rationale for Waiver:

Facilities Utilization Agreement

To be completed and submitted with an amendment request to add a new campus or relocate an existing campus

Lessor (Owner): Cabot Public Schools

Lessee (Tenant): Cabot Public Schools

Information regarding affiliation, family ties or other relationships between the Lessor and Lessee:

This location is already owned by the Cabot Public School District.

Address of Premises: 407 S. Polk St. Cabot, AR 72023

Describe the present use of the facility: K-12 Alternative Setting

Square Footage: 18,158 Rental Amount: N/A

Terms of Lease: N/A

Contingency: The terms of this agreement are contingent upon N/A
Charter School receiving approval by the Authorizer to operate an open-enrollment public charter school at the premises identified.

No indebtedness of any kind incurred or created by the open-enrollment public charter school shall constitute an indebtedness of the State of Arkansas or its political subdivisions and no indebtedness of the open-enrollment public charter school shall involve or be secured by the faith, credit or taxing power for the state or its political subdivisions. An open-enrollment public charter school shall not incur any debt, including lease, without the prior review and approval of the Commissioner of Education.

We affirm that the facility is, or will be prior to charter occupancy, compliant with ADE/IDEA accessibility regulations and will remain so while the charter occupies the location.

Lessee: _____

By: _____ Date: _____
Signature

Lessor: _____

By: _____ Date: _____
Signature

**Free and Reduced Lunch Percentages
2023 - 2024**

School	Sept	Oct	Nov	Dec	Jan	Feb	Mar	Apr	May
	12	12							
Elementary Schools									
Central	65.1%	62.4%	63.4%	63.2%	62.9%	64.1%	64.6%		
Eastside	40.9%	39.3%	40.1%	40.1%	41.4%	41.6%	41.6%		
Magness Creek	37.8%	36.9%	36.4%	36.0%	35.3%	35.0%	35.7%		
Mtn. Springs	34.0%	32.9%	33.3%	33.5%	32.9%	33.1%	33.6%		
Northside	54.4%	53.8%	56.0%	57.1%	57.9%	57.9%	58.4%		
Southside	36.1%	34.6%	35.5%	36.9%	37.8%	37.7%	37.6%		
Stagecoach	44.1%	40.8%	41.4%	41.6%	42.8%	43.2%	43.9%		
Ward Central	60.4%	59.2%	60.2%	61.0%	61.6%	62.7%	62.1%		
Westside	64.7%	62.1%	62.8%	63.1%	62.0%	63.1%	62.5%		
Middle School North	32.6%	41.5%	42.9%	43.2%	43.4%	43.7%	44.4%		
Middle School South	47.7%	46.9%	47.3%	47.0%	47.8%	48.1%	48.2%		
Junior High North	34.9%	40.8%	40.4%	40.7%	41.1%	41.9%	41.5%		
Junior High South	48.1%	44.3%	45.0%	45.7%	46.2%	45.7%	46.3%		
Freshman Acad	42.6%	39.0%	38.9%	39.0%	40.3%	39.8%	41.0%		
High School	41.1%	38.3%	38.5%	39.1%	38.6%	38.9%	39.3%		
ACE/ALE	51.9%	46.9%	47.4%	47.1%	46.4%	47.2%	48.3%		
AUT Learning	42.9%	52.4%	71.4%	70.6%	67.6%	66.7%	62.1%		
District	45.6%	43.2%	43.8%	44.2%	44.4%	44.7%	45.0%		

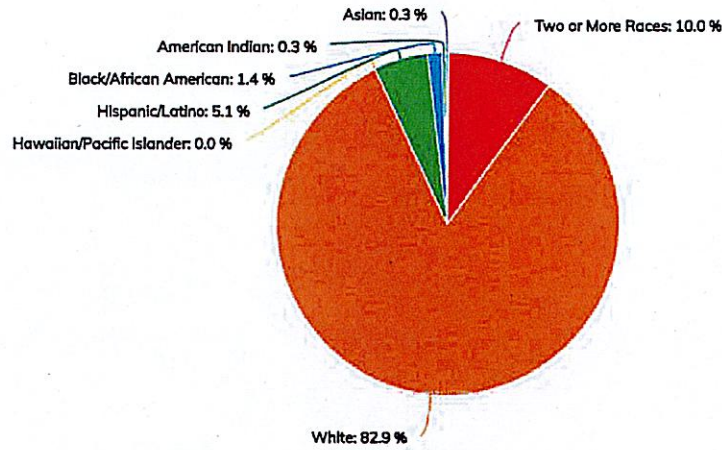
Cobot Panther Academy
Cobot Learning Academy

***Title I Schools**
Central Ele
Northside Ele
Ward Central Ele

Statistics

College Going Rate	N/A
District Per Pupil Expenditures	\$0.00
Graduation Rate	N/A
Student to Teacher Ratio	11 : 1
Average Class Size	N/A
English Learners	1%
Low Income	47%
Average Years Teaching Experience	12.49
Students Eligible to Receive Special Education	16%

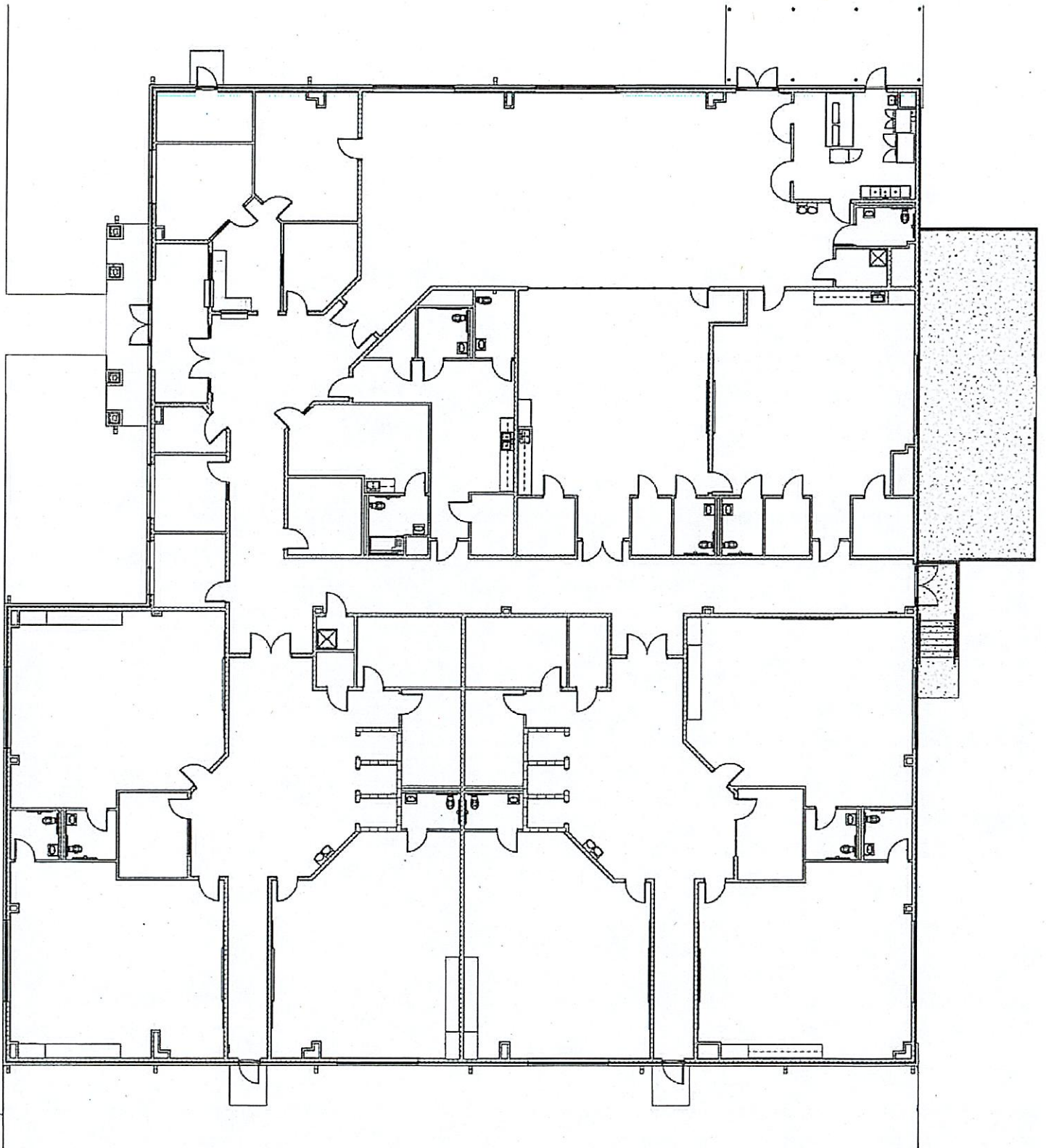
Race/Ethnicity



ESSA School Index

Data not available for year 2023-2024

* New Campus - Cabot Learning Academy



Hwy 321

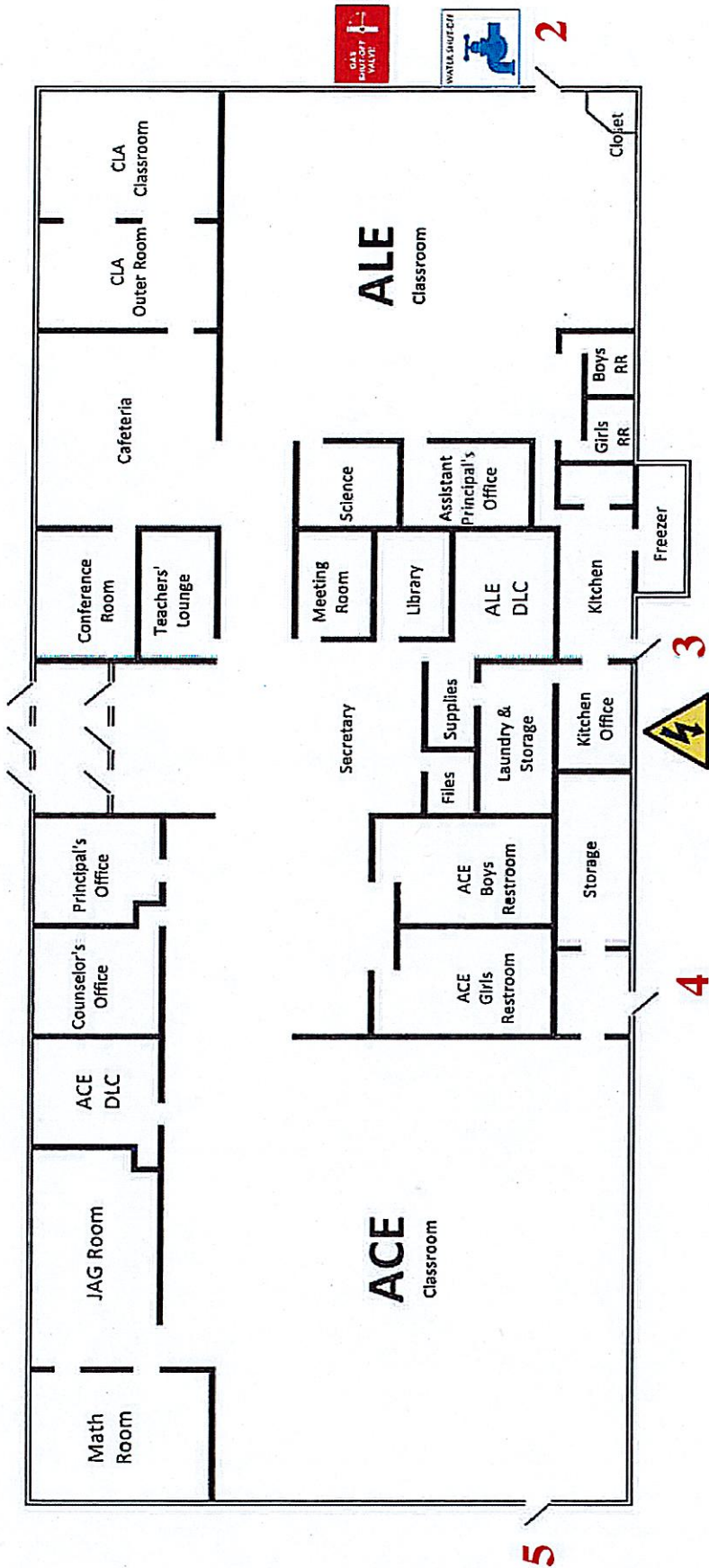
Funtastic Drive



ACE / ALE

Cabot School District
 ACE/ALE
 21 Funtastic Drive, Cabot
 (501) 743-3520

Main Entrance 1



Desegregation Analysis

The granting of a renewal to Cabot Public Schools for a conversion charter school will have no effect on any Arkansas Public School district's efforts to comply with court orders and statutory obligations to create and maintain a unitary system of desegregated public schools. Nothing in the operation of the Cabot Panther Academy as a conversion charter school will hamper, delay, or in any manner negatively affect the desegregation efforts of any public school district in this state.

CABOT PANTHER ACADEMY

Student Demographic Percentages

Excludes PK Students

325 Total Active Students On Oct 2, 2023

NOTE: Program Field counts/percentages reflect the field values on Oct 2, 2023. Non-program field (504, Homeless, Migrant & Home Language) counts/percentages are based on the current values of these fields.

Building Primary Race Percentages

Race	Race Count	Race Percentage
Asian	1	0.31%
Black	4	1.23%
Hispanic or Latino	17	5.23%
Native American/Alaskan Native	1	0.31%
Two or More Races	32	9.85%
White	270	83.08%
Primary Race - Total	325	100.00%

CABOT PANTHER ACADEMY

Student Demographic Percentages

Excludes PK Students

347 Total Active Students On Oct 1, 2021

NOTE: Program Field counts/percentages reflect the field values on Oct 1, 2021. Non-program field (504, Homeless, Migrant & Home Language) counts/percentages are based on the current values of these fields.

Building Primary Race Percentages

Race	Race Count	Race Percentage
Asian	1	0.29%
Black	10	2.88%
Hispanic or Latino	22	6.34%
Native American/Alaskan Native	2	0.58%
Two or More Races	21	6.05%
White	291	83.86%
Primary Race - Total	347	100.00%

CABOT PANTHER ACADEMY

Student Demographic Percentages

Excludes PK Students

294 Total Active Students On Oct 3, 2022

NOTE: Program Field counts/percentages reflect the field values on Oct 3, 2022. Non-program field (504, Homeless, Migrant & Home Language) counts/percentages are based on the current values of these fields.

Building Primary Race Percentages

Race	Race Count	Race Percentage
Asian	1	0.34%
Black	9	3.06%
Hispanic or Latino	20	6.80%
Two or More Races	20	6.80%
White	244	82.99%
Primary Race - Total	294	100.00%

Student Demographic Percentages

Excludes PK Students

10,357 Total Active Students On Oct 3, 2022

NOTE: Program Field counts/percentages reflect the field values on Oct 3, 2022. Non-program field (504, Homeless, Migrant & Home Language) counts/percentages are based on the current values of these fields.

Building Primary Race Percentages

Race	Race Count	Race Percentage	House Team Name
Black	2	3.57%	Cabot Learning Academy
Hispanic or Latino	2	3.57%	Cabot Learning Academy
Native American/Alaskan Native	1	1.79%	Cabot Learning Academy
Two or More Races	6	10.71%	Cabot Learning Academy
White	45	80.36%	Cabot Learning Academy
Primary Race - Total	56	100.00%	

Student Demographic Percentages

Excludes PK Students

10,335 Total Active Students On Oct 2, 2023

NOTE: Program Field counts/percentages reflect the field values on Oct 2, 2023. Non-program field (504, Homeless, Migrant & Home Language) counts/percentages are based on the current values of these fields.

Building Primary Race Percentages

Race	Race Count	Race Percentage	House Team Name
Black	2	3.28%	Cabot Learning Academy
Hispanic or Latino	2	3.28%	Cabot Learning Academy
Native American/Alaskan Native	1	1.64%	Cabot Learning Academy
Two or More Races	8	13.11%	Cabot Learning Academy
White	48	78.69%	Cabot Learning Academy
Primary Race - Total	61	100.00%	

Student Demographic Percentages

Excludes PK Students

10,270 Total Active Students On Oct 1, 2021

NOTE: Program Field counts/percentages reflect the field values on Oct 1, 2021. Non-program field (504, Homeless, Migrant & Home Language) counts/percentages are based on the current values of these fields.

Building Primary Race Percentages

Race	Race Count	Race Percentage	House Team Name
Black	1	2.50%	Cabot Learning Academy
Hispanic or Latino	2	5.00%	Cabot Learning Academy
Native American/Alaskan Native	1	2.50%	Cabot Learning Academy
Two or More Races	7	17.50%	Cabot Learning Academy
White	29	72.50%	Cabot Learning Academy
Primary Race - Total	40	100.00%	
