

Sports Surface Impact Test

New Fairfield High School

Rebel Stadium

New Fairfield, CT

Test Date: August 1, 2024

Report Date: August 3, 2024

Test Methods- ASTM F 355: Standard Test Method for Shock-Absorbing Properties of Playing Surface Systems and Materials, Procedure A. **ASTM F 1936:** Standard Specification for Shock-Absorbing Properties of North American Football Field Playing systems as Measured in the Field. Accelerometer last calibrated April, 2024.

Tests performed by Nick Baic.

Surface Description: FieldTurf - monofilament, sand/rubber infill, artificial turf system, multi-sport field. Field is with football and soccer, with a center logo and painted with girls lacrosse. Field was installed in 2011.

Field looks fair. Fibers are laying flat and are breaking off.

Field Average Gmax is for 10 total drop locations.

Weather Conditions: Sunny, Calm, Dry

Max Temp.	95 °F
Min Temp.	92 °F
Humidity	42%

Summary of Results

Field Average Gmax	179.84
Field Max Gmax	207.7
Average Infill Depth "	1.17 "



Test results reported herein reflect the conditions of the tested field at the time of testing and at the temperatures reported.

Under the stated test conditions, two points **did not meet** the requirement of < 200 Gmax when tested in accordance with ASTM F1936.

Anne Baic

02075 Deer Hill Lane (231) 675-0251
Boyne City, MI 49712
Email: annicktesting@gmail.com





Sports Surface Impact Test New Fairfield High School

Rebel Stadium New Fairfield, CT

FieldTurf

Test Point - Test Description (ASTM F355-A/F1936-10)	Drop #	GMAX	Infill Depth	Surf °F
1- Goal Line, End A, Center of Field Main Entrance/Parking lot end	1	200.9		
	2	212.2		
	3	203.1		
Avg 2 & 3		207.7	1	112
2- 10 Yard Line, End A, 63 ft from Center of Field to Side C	1	164.7		
	2	168.8		
	3	172.6		
Avg 2 & 3		170.7	1 1/4	112
3- 25 Yard Line, End A, 40 ft from Center of Field to Side C	1	178.3		
	2	176.4		
	3	181.5		
Avg 2 & 3		179.0	1 3/16	110
4- Center of Field (COF) on red	1	192.5		
	2	205.3		
	3	202.6		
Avg 2 & 3		204.0	1	108
5- 25 Yard Line, End B, 63 ft from Center of Field to Side D	1	174.5		
	2	177.3		
	3	172.6		
Avg 2 & 3		175.0	1 1/4	112
6- 12 Yard Line, End B, Center of Field	1	187.2		
	2	179.8		
	3	181.1		
Avg 2 & 3		180.5	7/8	112
7- Tester's choice, high wear, off field 20 yd line, End A, 1/2 way between football/soccer Sideline D	1	166.2		
	2	174.4		
	3	170.9		
Avg 2 & 3		172.7	1 5/16	108
8- Tester's Choice 20 yd line, End B, 1/2 way between football/soccer Sideline C	1	160.1		
	2	168.3		
	3	158.5		
Avg 2 & 3		163.4	1 3/8	102
9- 6 ft from Goal Line to the back of the End Zone, End A, COF on blue	1	172.9		
	2	178.0		
	3	181.7		
Avg 2 & 3		179.9	1 1/8	112
10- 6 ft from the back of the End Zone to the Goal Line, End B, COF on blue	1	169.4		
	2	164.9		
	3	166.8		
Avg 2 & 3		165.9	1 5/16	102

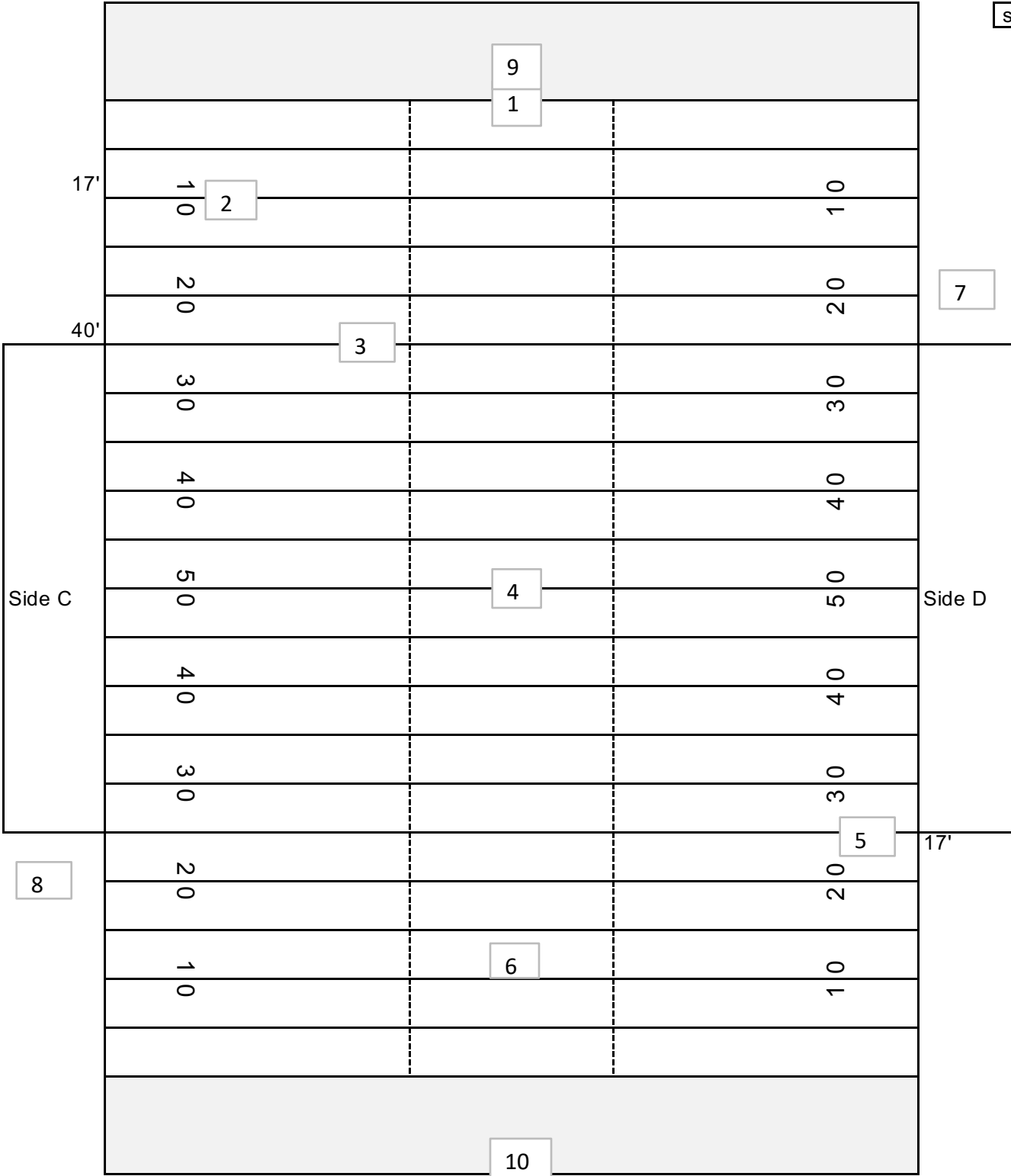
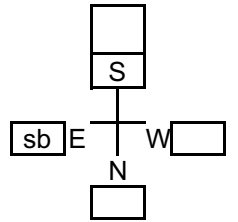
End A - South Side
Sideline C - East Side, Scoreboard Side
Sideline D - West Side
End B - North Side

Test Date: 8/1/24
Report Date: 8/3/24

Testing turf, tracks, wood floors, and playgrounds
Including G-Max, Vertical Deformation, Force Reduction, HIC and other tests

Football

End A



End B

Side C

Side D

17'