



Gold Performance Acknowledgments

Coppell ISD 2006



GPA Indicators

- ❑ Advanced Course Completion
- ❑ AP/IB Results
- ❑ Attendance Rate
- ❑ Commended Performance on TAKS
- ❑ Comparable Improvement: Reading and Math
- ❑ RHSP/DAP
- ❑ SAT/ACT Participation/Results
- ❑ TSI Higher Ed. Readiness Component: ELA, Math

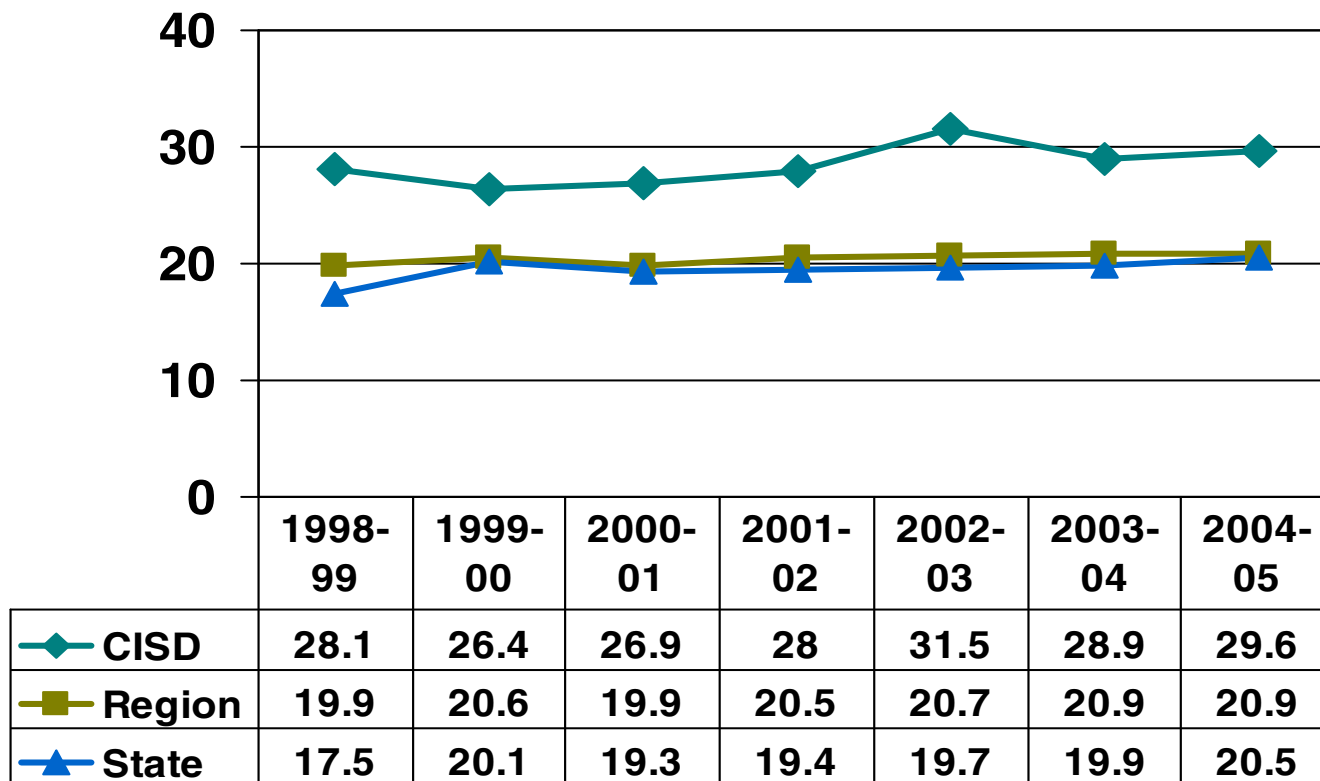
++ = Acknowledged; NQ = Does Not Qualify

Note: GPA Indicators are measured for all applicable student groups

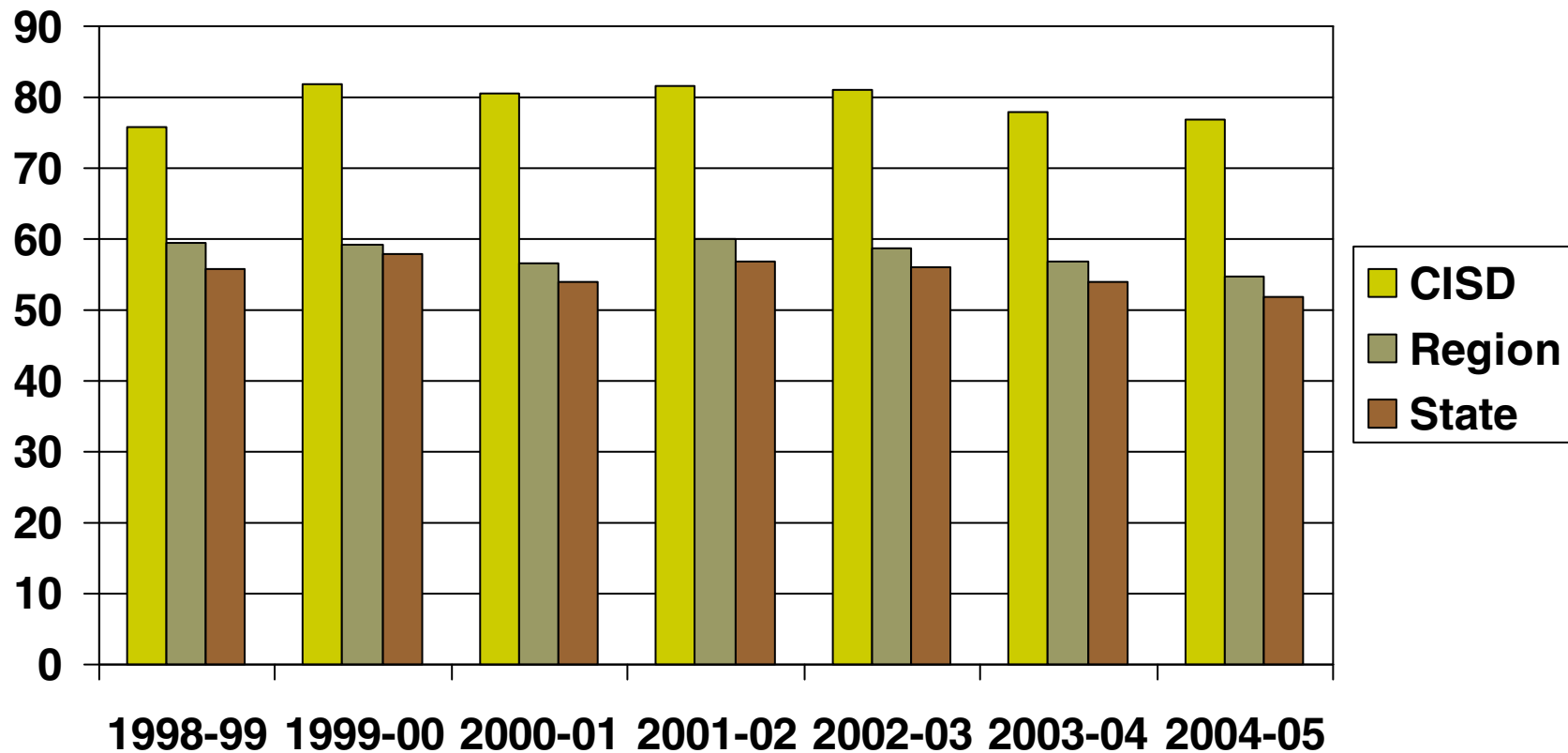
Advanced Courses/Attendance

Category	CISD Score	Qualifying Criteria (04)	CISD Data
ADV: Advanced Course Completion	NQ	25% or more (05)	14.5%-29.6%
AP/IB Results	++	15%/50% (05)	57.1-76.8%
ATTD: Attendance	NQ	ISD – 96% ES - 97% MS – 96% HS - 95% (05)	95.5-96.7%

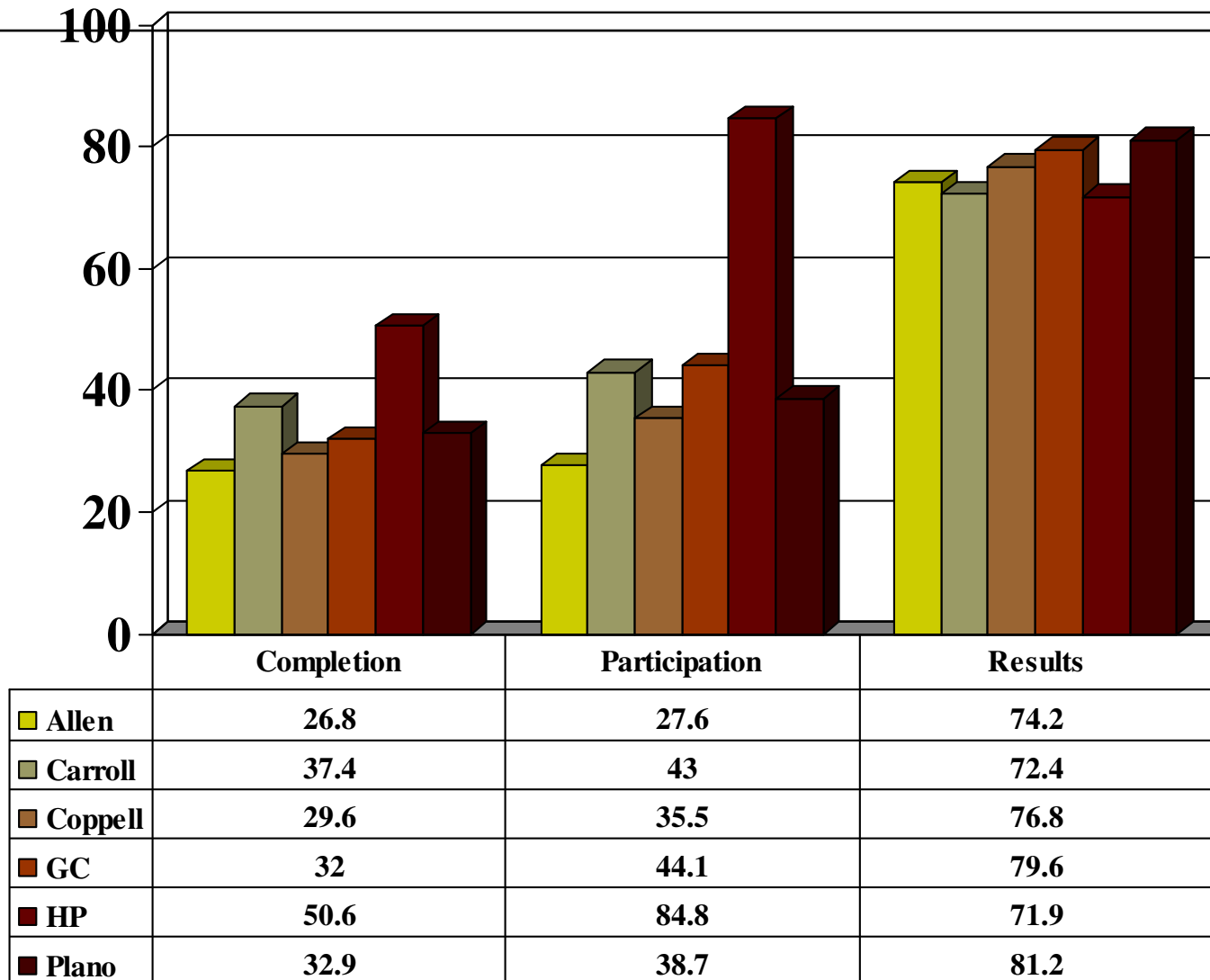
AP Participation



AP Examinees Performance



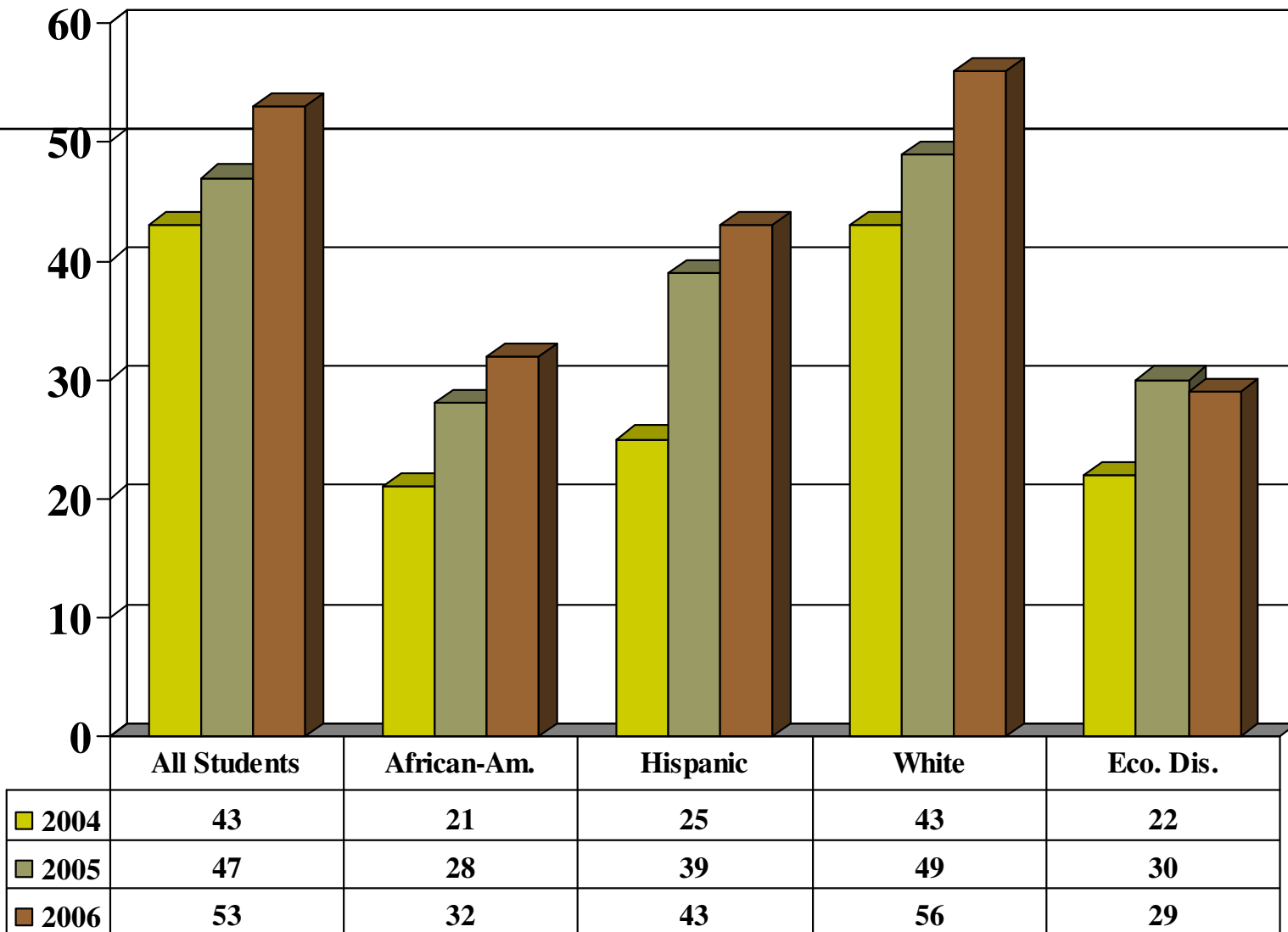
Advanced Course Comparison



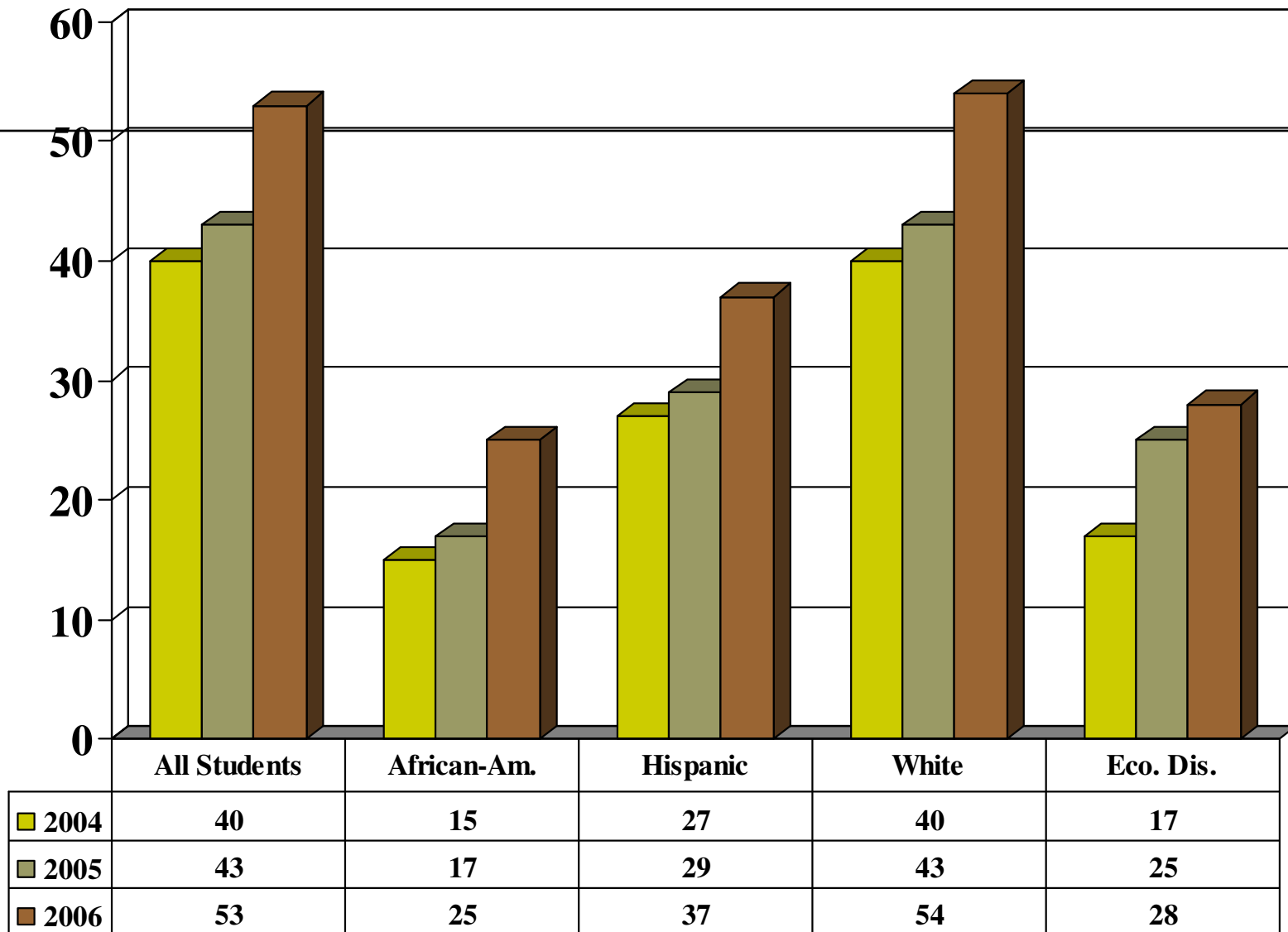
Commended TAKS Performance

COMM READ	++	20% or more (06)	29% - 56%
COMM MATH	++	20% or more (06)	25%-54%
COMM WRIT	++	20% or more (06)	46% - 62%
COMM SCIE	NQ	20% or more (06)	10%, 24%, 27%, 34%, 35%
COMM SSTD	++	20% or more (06)	40%-62%

Commended Reading Performance



Commended Math Performance





Comparable Improvement

- ❑ Average Texas Growth Index (TGI) in TAKS Reading/ELA and Math
- ❑ Only available to campuses
- ❑ Based on 39 demographically similar campuses
- ❑ Ranked in quartiles based on performance (Q1, Q2, Q3, Q4)
- ❑ Growth is calculated based on student scale scores in consecutive years
- ❑ Criteria for GPA: Top 25% of growth within campus group
- ❑ Growth is based on 1st administration only 4- 11th graders



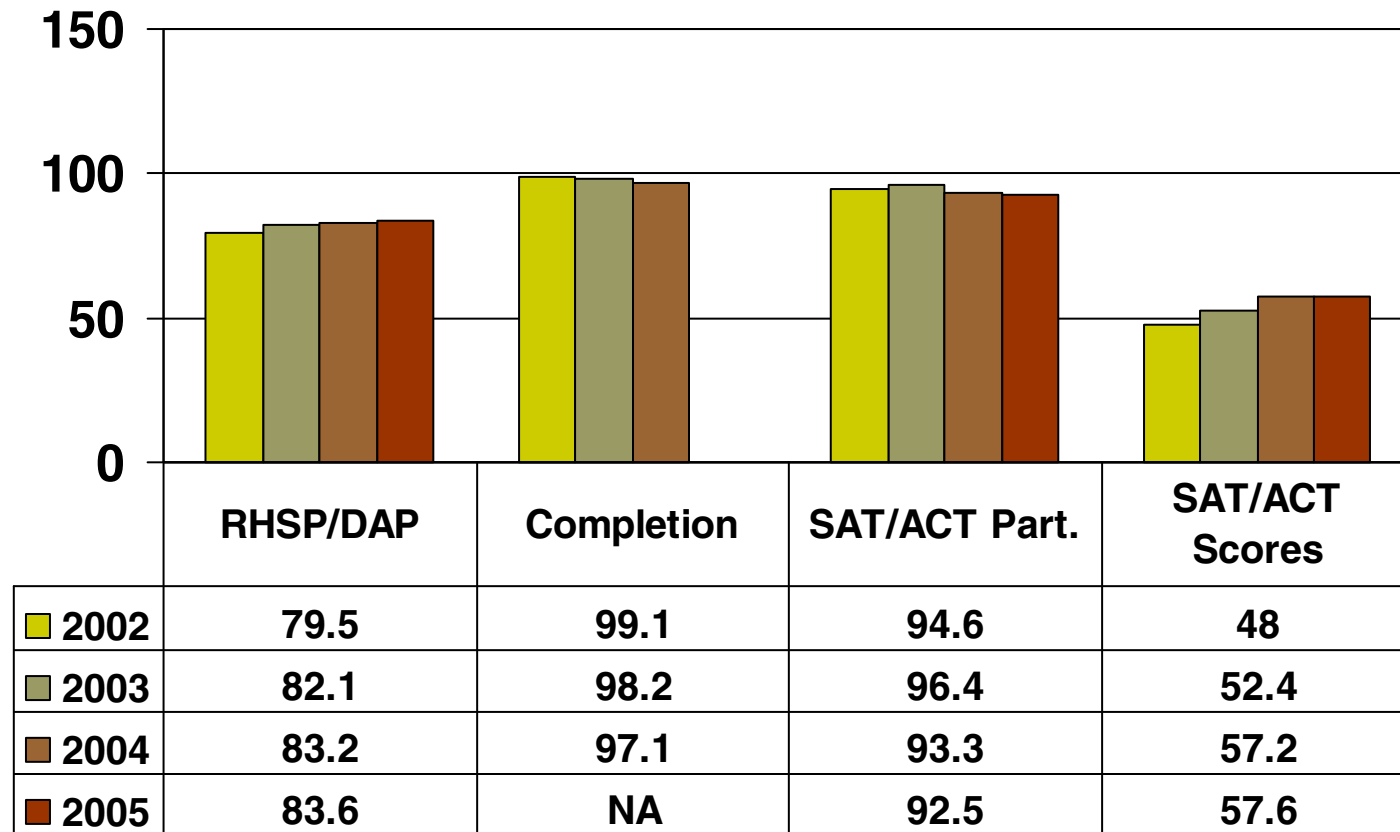
Campus CI GPAs

- Coppel High School
 - 1st Quartile for ELA and Math (last year Q3, Q4)
 - Highest level of growth for Q1 in math
 - Only Q1, Q1 school in CISD
- Coppel MS East and West: Q1 for math growth in 2006
- Lakeside Q1 for reading growth

Graduate Performance

Category	CISD Score	Qualifying Criteria	CISD Data
RHSP/DAP	++	60% or more (05)	83.6%
SAT/ACT	++	70%/40% (05)	92.5%/ 57.6%
TSI Read/ELA	++	50% (06)	63%
TSI Read/ELA	++	50% (06)	85%

Graduates/College Admissions



Comparison Data

Category	# ++	Acknowledgments						
		Allen	Carroll	Coppell	Frisco	GC	HP	Plano
ADV	69	NQ	++	NQ	NQ	NQ	++	NQ
AP/IB	51	++	++	++	NQ	++	++	NQ
ATTD	351	++	++	NQ	NQ	NQ	++	++
COMM READ	384	++	++	++	++	++	++	++
COMM MATH	167	++	++	++	++	NQ	++	++
COMM WRIT	580	++	++	++	++	++	++	++
COMM SCIE	103	NQ	++	NQ	NQ	NQ	++	NQ
COMM SSTD	391	++	++	++	++	++	++	++
RHSP/DAP	389	NQ	++	++	NQ	++	++	++
SAT/ACT	32	NQ	++	++	NQ	NQ	++	NQ
TSI ELA	165	NQ	NQ	++	NQ	++	++	NQ
TSI MATH	377	NQ	++	++	NQ	++	++	NQ



Statewide Comparison

- #1 in the state for most GPAs (districts over 10,000)
- To learn more about GPA and make other comparisons, visit the tea website below:
<http://www.tea.state.tx.us/perfreport/account/2006/index.html>

Congratulations...

CISD students, parents, faculty and staff!

