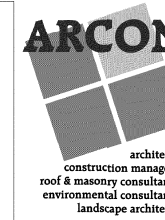


REPRODUCTION OF THIS DRAWING, BY ANY PHOTOGRAPHIC, XEROGRAPHIC OR OTHER SIMILAR TECHNIQUE OR PROCESS, DURING THE BIDDING PERIOD OR FOR INCORPORATING THE MATERIAL CONTAINED HEREON INTO A SHOP DRAWING, IS STRICTLY PROHIBITED WITHOUT THE EXPRESSED CONSENT OF ARCON ASSOCIATES, INC. © 2018 ARCON ASSOCIATES, INC.



architects  
construction managers  
roof & masonry consultants  
environmental consultants  
landscape architects

2050 south finley road, suite 40  
lombard, illinois 60148  
p: 630.495.1900

www.arconassoc.com

**PHASE 3  
RENOVATION  
WORK**

at  
**LINCOLN HALL  
MIDDLE SCHOOL**  
6855 N. Crawford Ave.  
Lincolnwood, Illinois 60712

for the  
**BOARD of EDUCATION**  
Lincolnwood  
School District 74

6950 N. East Prairie Road  
Lincolnwood, Illinois  
60712

**PROGRESS DRAWING-  
NOT FOR  
CONSTRUCTION**

**Civil:**  
Mankard Consulting  
900 Woodlands Parkway  
Vernon Hills, IL 60061  
p: 847.634.5550

**MEP:**  
AMECO Engineering Inc.  
5115A Belmont  
Downers Grove, IL 60515  
p: 630.515.1555  
f: 630.515.1583

**Structural:**  
20/10 Engineering Group  
1216 Tower Road  
Schaumburg, IL 60173  
p: 847.882.2010  
f: 847.882.2201

**REVISIONS**

No.	Date	By
-----	------	----

Project Number:  
**17088**

Issue Date:  
**December 20, 2017**

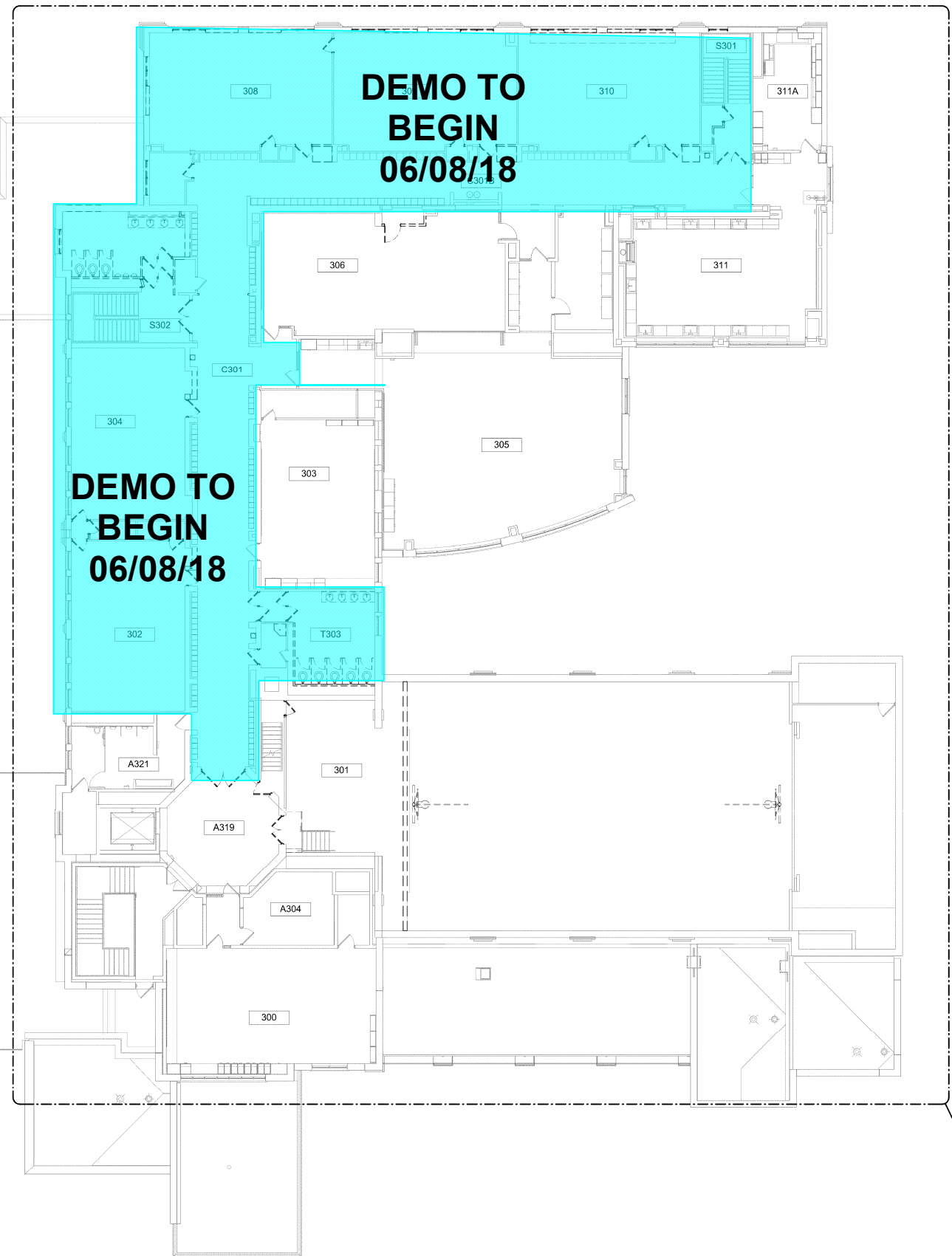
Drawn by:

Author

Sheet Title  
**COMPOSITE 3RD FLR.  
PLAN-DEMOLITION**

Sheet Number

**3-A0.3**

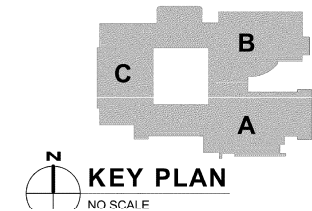


**DEMO TO  
BEGIN  
06/08/18**

**DEMO TO  
BEGIN  
06/08/18**

1  
3-A0.3 AREA OF WORK

**1 COMPOSITE THIRD FLOOR PLAN-DEMOLITION**  
1" = 10'-0"



**KEY PLAN**  
NO SCALE