



WESTWIND SCHOOL FOR PERFORMING ARTS
PUBLIC CHARTER SCHOOL

Meet the Founder



- Founder of the Timmons Arts Foundation
- Produced shows and events featured on local and national platforms (CNN, WETV, Fox)
- Producer - New York Fashion Week
- Producer – LA Fashion Week
- Founder and Executive Producer of Designers Choice Fashion Preview
- Facilitator – Jazz at Lincoln Center Pilot –AR
- Juvenile Probation Officer
- Decorated Army Veteran

Timmons Arts Foundation

(sponsoring entity)



- Founded in 2011 with the mission to Educate, Enrich and Empower children through the arts
- Donated Supplies and Musical Instruments to Title 1 Schools
- Cultivating the Arts Youth Summer Camp
 - Annual Summer Camp est. 2014
- Provides Arts enrichment to over 500 children from 22 schools across Central Arkansas
- TAF has have developed and maintained strong financial support from individual donors, corporate sponsors and foundations



Timmons Arts Foundation



Timmons Arts Foundation

(Cultivating the Arts Summer Camp)



Timmons Arts Foundation



MCKENZYE D. WEBSTER KASON CAIN SPENCER STEWARD KEVIN MURRY MACI MONTGOMERY

TIMMONS Arts FOUNDATION PRESENTS

Annie

CULTIVATING THE ARTS YOUTH SUMMER CAMP FINAL PRODUCTION

THURSDAY, AUGUST 1, 2019
DOORS OPEN AT 6PM SHOW STARTS AT 6:30 \$5 DONATION

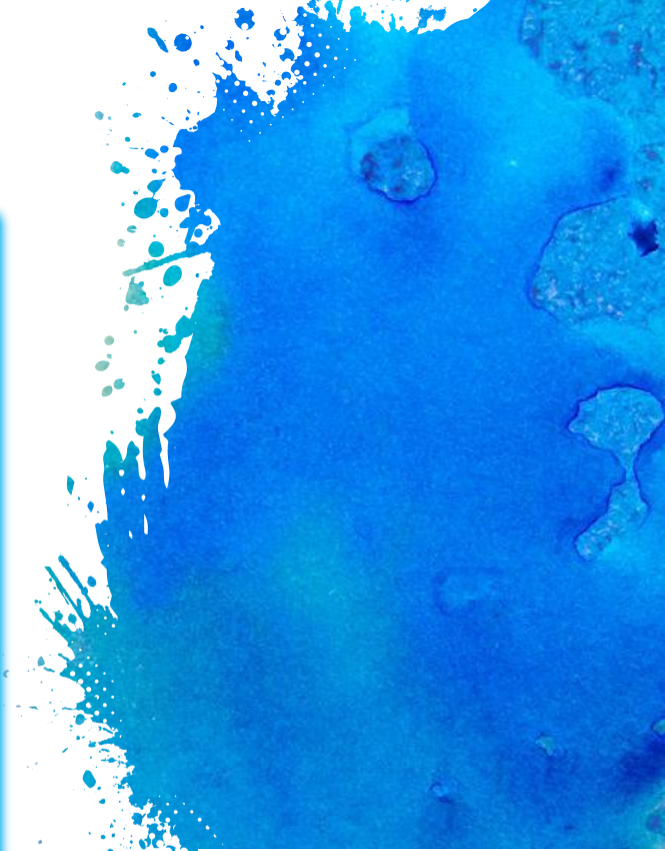
PULASKI TECHNICAL COLLEGE
CENTER FOR HUMANITIES AND ARTS
3000 W. SCENIC DRIVE NORTH LITTLE ROCK, AR.

*SUPPORT FOR THE TIMMONS ARTS FOUNDATION IS PROVIDED, IN PART, BY THE ARKANSAS ARTS COUNCIL, AN AGENCY OF THE DEPARTMENT OF ARKANSAS HERITAGE, AND THE NATIONAL ENDOWMENT

Simmons Bank PEPSICO FOUNDATION Arkansas Arts Council FirstSecurity DFC



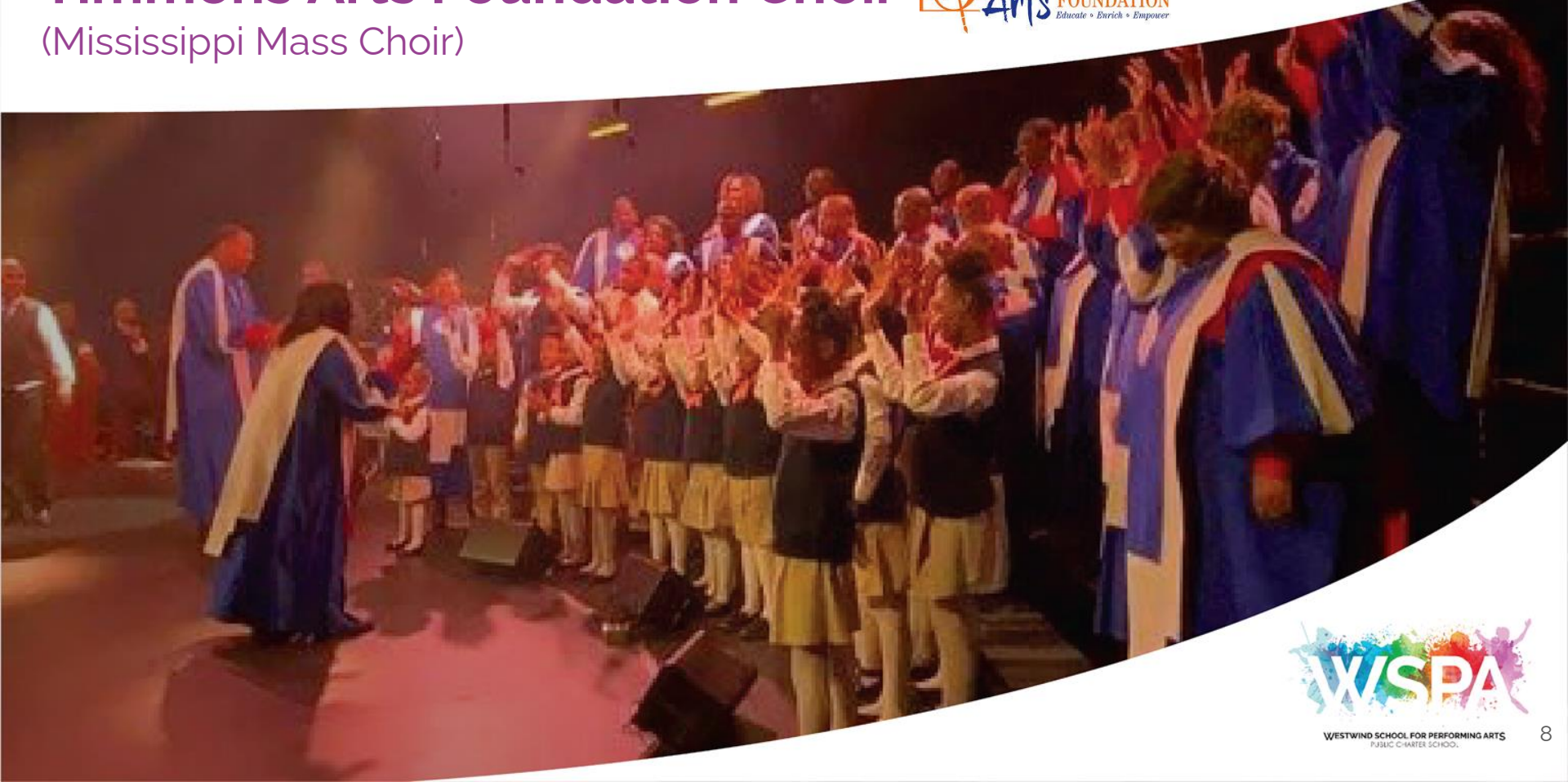
Timmons Arts Foundation Choir



WESTWIND SCHOOL FOR PERFORMING ARTS
PUBLIC CHARTER SCHOOL

Timmons Arts Foundation Choir

(Mississippi Mass Choir)



Timmons Arts Foundation

(Steve Landers Commercial)



Timmons Arts Foundation

- Because of the foundations local and national partnerships, we are able to connect students to a professional performing arts community.



Mission

The mission of **Westwind School for Performing Arts** is to provide an equitable and engaging educational experience that is enhanced by the arts. We believe that by establishing strong connections between students and the performing arts community, students will embrace the belief that learning is a creative and enlightening process.



Why Arts Infused Learning?

- Working in the arts helps learners to develop creative problem-solving skills.
- Teaching through the arts can present difficult concepts visually, making them more easy to understand.
- Art instruction helps children with the development of motor skills, language skills, social skills, decision-making, risk-taking, and inventiveness.



- Visual arts teach learners about color, layout, perspective, and balance: all techniques that are necessary in presentations (visual, digital) of academic work.
- Integrating art with other disciplines reaches students who might not otherwise be engaged in classwork.
- Arts experiences boost critical thinking, teaching students to take the time to be more careful and thorough in how they observe the world.
- Art education connects students with their own culture as well as with the wider world.
- A [study of Missouri public schools](#) in 2010 found that greater arts education led to fewer disciplinary infractions and higher attendance, graduation rates, and test scores.

Why Arts Infused Learning?

Meet Michael

Before and after Art Infused Learning

Before

Literacy

Comprehension

Low Self Esteem

Suffering Grades

After

Reading/literacy Improved

Comprehension Improved

Improved Self Esteem

Grades Improved



Meet Jenn Conner

- Certified PA Educator in Middle Years and High School Social Studies and Special Education
- Founding teacher of two innovative public schools in Philadelphia
- Professional Education Trainer, training on behalf of the US Department of Education
- Wrote the Jazz at Lincoln Center After school Curriculum
- Project manages nationwide education initiatives



Westwind Key Programmatic Features

- To maintain an Equitable environment
- To ensure the curriculum is Art-Infused
- To ensure work is Academically Rigorous
- To ensure students are Interconnected with the Arts Community
- To ensure students believe that the learning process is one of Creativity and Enlightenment



Curriculum

<i>ELA</i>	<i>Math</i>	<i>Science</i>	<i>Social Studies</i>
<ul style="list-style-type: none">• Wit & Wisdom• Benchmark Workshop• Making Meaning	<ul style="list-style-type: none">• Eureka Math• Singapore Math• Math Design Collaborative• Illustrative Mathematics	<ul style="list-style-type: none">• Next Generation Storylines	<ul style="list-style-type: none">• Arkansas Social Studies Toolkit

Supporting Resources

- Institute for Arts Integration and STEAM Curriculum
- Educurious



TRADITIONAL



*Independent
Practice*

Guided

Model



ACTs

Plan

SPIRALED

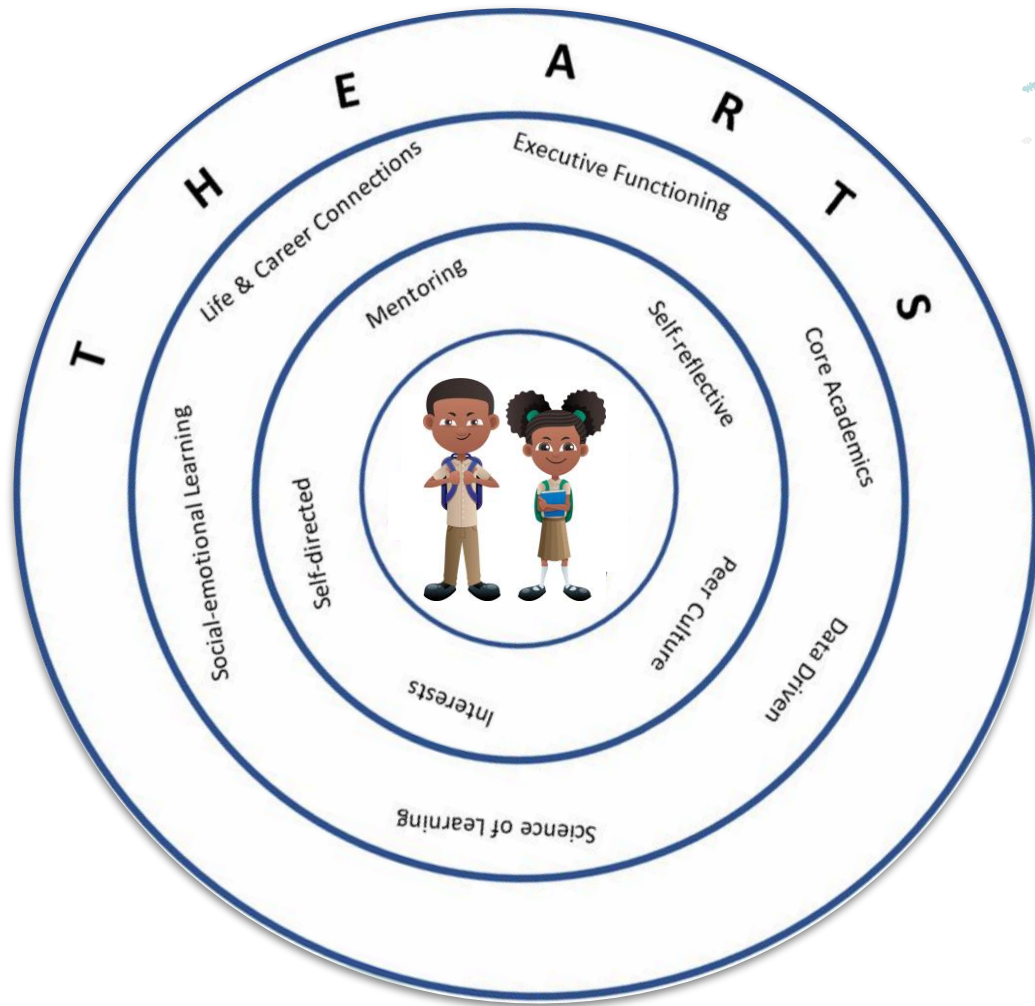
Rehearse

Perform



Across Content





WESTWIND SCHOOL OF PERFORMING ARTS
PUBLIC CHARTER SCHOOL

Classes Designed to Support

- Advisory 1
- Core Content
- Advisory 2
- Science of Learning Electives
- Arts Electives





WESTWIND SCHOOL FOR PERFORMING ARTS
PUBLIC CHARTER SCHOOL

- 36,000 square feet Building Space
- 17 acres of land
- Courtyard and Pond located on property
- State of the art theater





WESTWIND SCHOOL OF PERFORMING ARTS
PUBLIC CHARTER SCHOOL

- Commercial Kitchen
- Bistro/Cafeteria



Support Services

- Transportation
- Health Services
- Guidance Counseling for social emotional learning
- Media Center
- Special Education
- Dyslexia
- English Language Learner (ELL)
- Gifted & Talented
- Curriculum



Recruitment

- Targeted social media
- Digital display web ads
- Direct mail
- Cable television
- Mobile ads
- Direct (Robo) phone calls

The paid media will be supported by radio and television on-air interviews



Community & Family Engagement

- Parenting
- Communicating
- Volunteering
- Learning at Home
- Decision Making
- Collaborating with Community



Governance/Human Capital

- A Westwind School Board of Directors will be established and comprised separately from the sponsoring entity Board
- A Full time Executive Director will be hired and report directly to the schools Board of Directors
- The school will staff a full time Principal to report to the Executive Director
- Professional Development for all staff will be provided by the Arkansas Public School Resource Center

Budget

Calculations Based on Enrollment of 148	Year 1	Year 2
Revenue	\$1,369,823.00	\$1,590,007.00
Expenditures	\$1,348,615.00	\$1,515,530.00
Net Revenue Over Expenditures	\$21,208.00	\$74,477.00



WESTWIND SCHOOL FOR PERFORMING ARTS
PUBLIC CHARTER SCHOOL

Thank You