

March 2017

Derby Public Schools

Performance Dashboard

Derby High School

Martin Pascal, Principal

“People without information cannot act. People with information cannot help but act.”

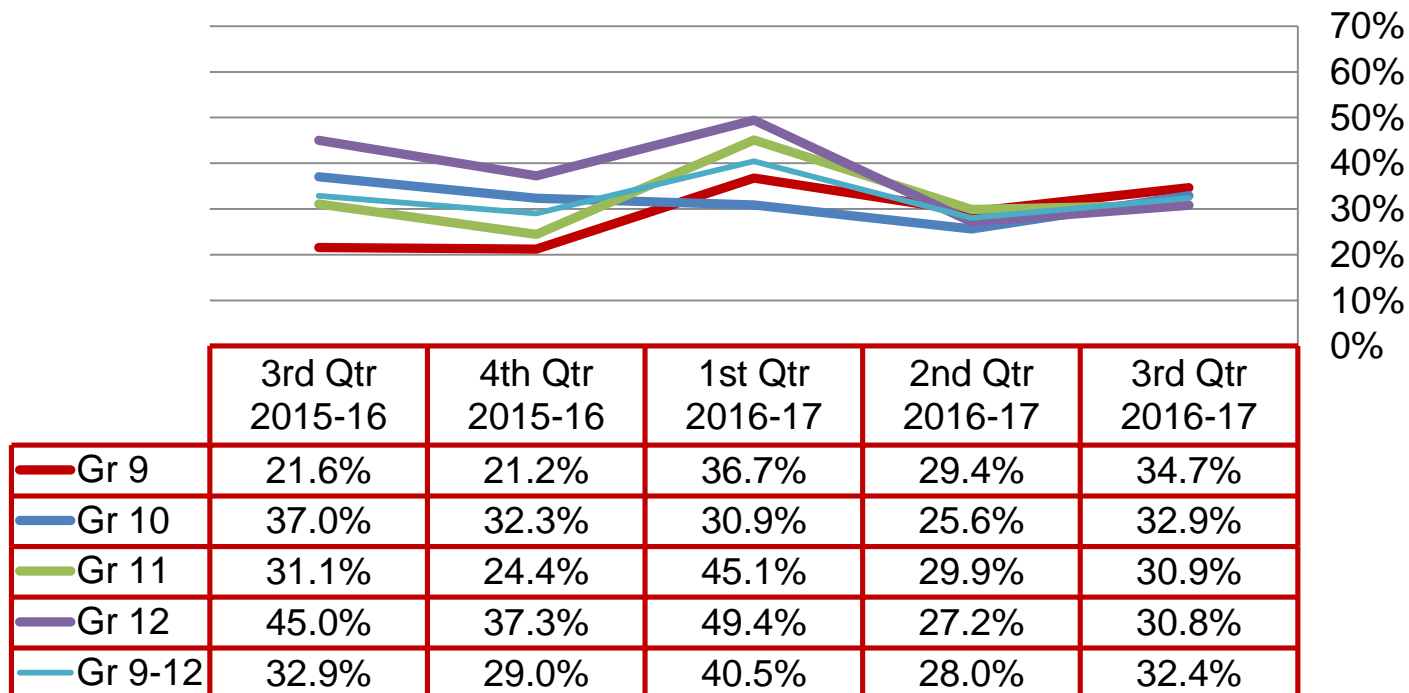
Ken Blanchard



Quarterly Data

High Grades

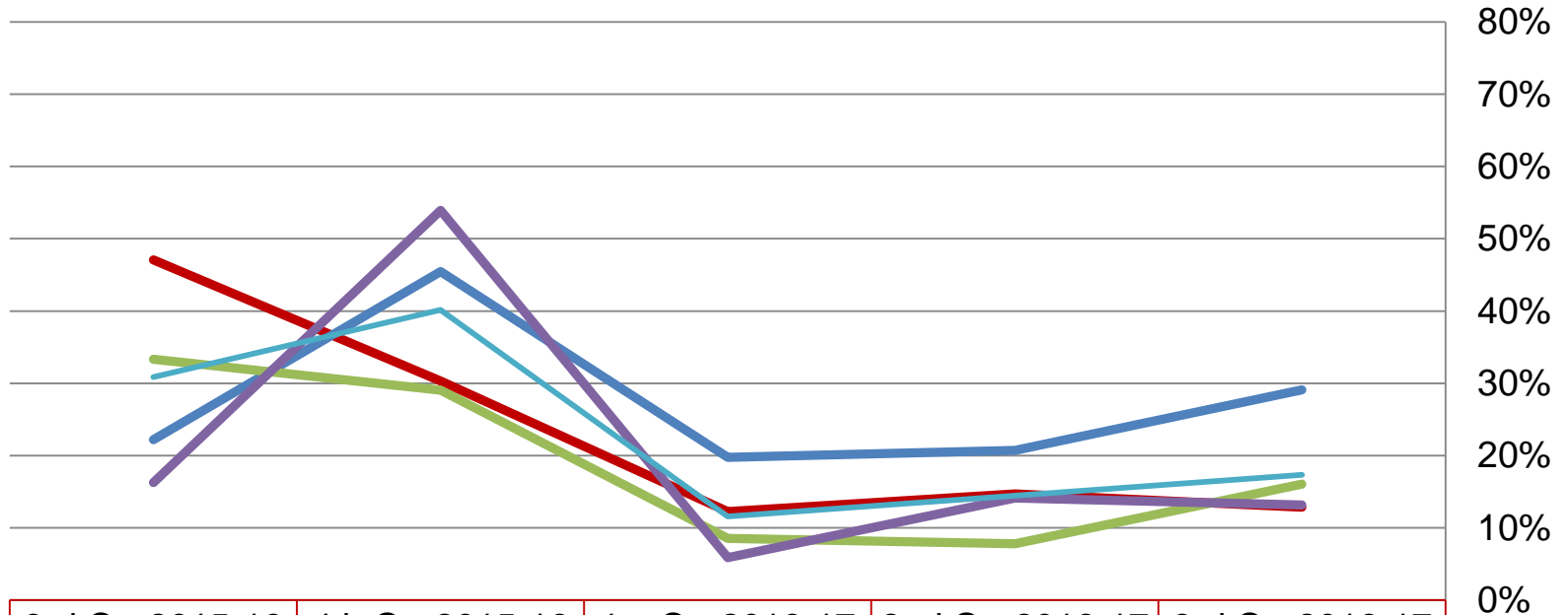
Percent of students earning 80% or above in all courses regardless of academic level:



Failing Grades

Derby High School

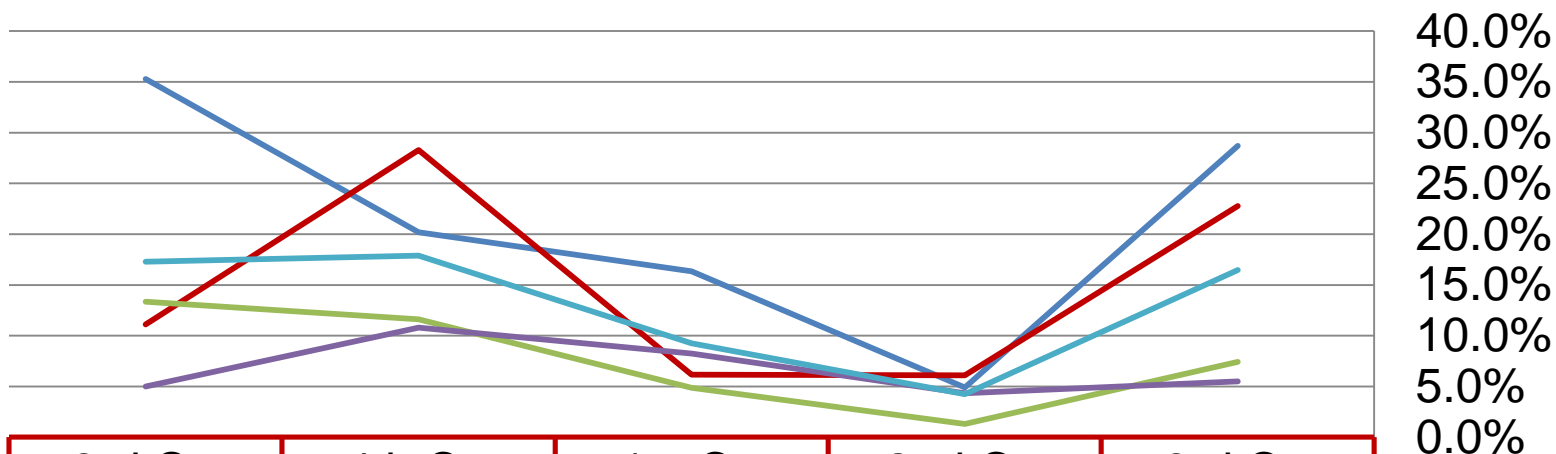
Percent of students with at least one course below a 65%:



	3rd Qtr 2015-16	4th Qtr 2015-16	1st Qtr 2016-17	2nd Qtr 2016-17	3rd Qtr 2016-17
— Gr 9	47.1%	30.3%	12.2%	14.7%	12.9%
— Gr 10	22.2%	45.5%	19.8%	20.7%	29.1%
— Gr 11	33.3%	29.1%	8.5%	7.8%	16.0%
— Gr 12	16.3%	53.9%	5.9%	14.1%	13.2%
— Gr 9-12	30.9%	40.2%	11.6%	14.4%	17.3%

Failing Grades

Percent of students with at least two courses below a 65%:



	3rd Qtr 2015-16	4th Qtr 2015-16	1st Qtr 2016-17	2nd Qtr 2016-17	3rd Qtr 2016-17
Gr 9	35.3%	20.2%	16.3%	4.9%	28.7%
Gr 10	11.1%	28.3%	6.2%	6.1%	22.8%
Gr 11	13.3%	11.6%	4.9%	1.3%	7.4%
Gr 12	5.0%	10.8%	8.2%	4.3%	5.5%
Gr 9-12	17.3%	17.9%	9.2%	4.2%	16.5%

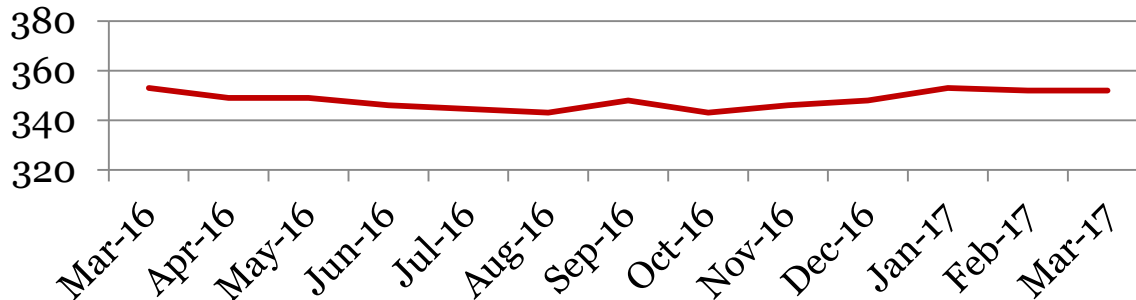
Monthly Data

Derby High School

Enrollment – 1st of the month

	9	10	11	12	Total
Mar-17	101	79	81	91	352
Feb-17	102	81	78	91	352
Jan-17	102	82	77	92	353
Dec-16	100	80	83	85	348
Nov-16	98	81	82	85	346
Oct-16	98	78	83	84	343
Sept-16	99	81	84	84	348
Jun-16	98	81	90	77	346
May-16	99	81	91	78	349
Apr-16	100	80	91	78	349
Mar-16	102	81	90	80	353

Total School Enrollment

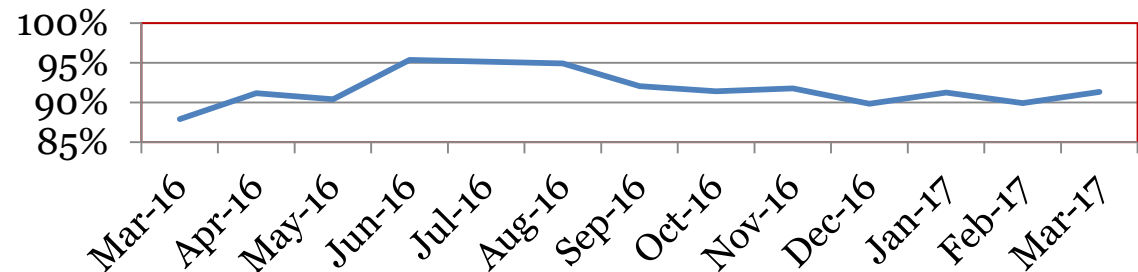


Attendance – Students

Average daily percent present:

	9	10	11	12	Total
Mar-17	88.5	91.6	91.5	93.9	91.3
Feb-17	87.5	90.6	88.3	93.3	89.9
Jan-17	88.5	92.7	90.6	93.4	91.2
Dec-16	86.5	90.8	90.0	92.7	89.8
Nov-16	89.8	91.3	92.9	93.3	91.7
Oct-16	88.1	92.4	92.7	93.1	91.4
Sep-16	89.2	95.1	92.6	91.9	92.0
Aug-16	95.2	95.9	94.5	93.9	94.9
Jun-16	91.8	96.0	95.0	99.5	95.3
May-16	87.2	93.6	92.2	88.9	90.4
Apr-16	89.9	93.6	92.2	88.9	91.2
Mar-16	86.1	90.6	87.3	88.0	87.9

Total Student Attendance



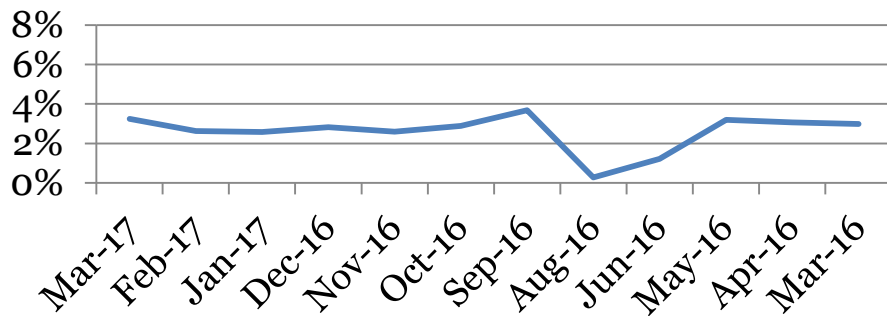
Tardies Average daily percent tardy:

	9	10	11	12	Total
Mar-17	3	4	3	3	3
Feb-17	2	3	2	2	3
Jan-17	2	3	2	3	3
Dec-16	2	3	3	3	3
Nov-16	2	3	2	3	3
Oct-16	3	3	3	3	3
Sept-16	3	4	4	4	4
Aug-16	0	0	0	0	0
June-16	1	2	1	1	1
May-16	4	3	3	4	3
Apr-16	3	2	3	4	3
Mar-16	3	3	3	3	3

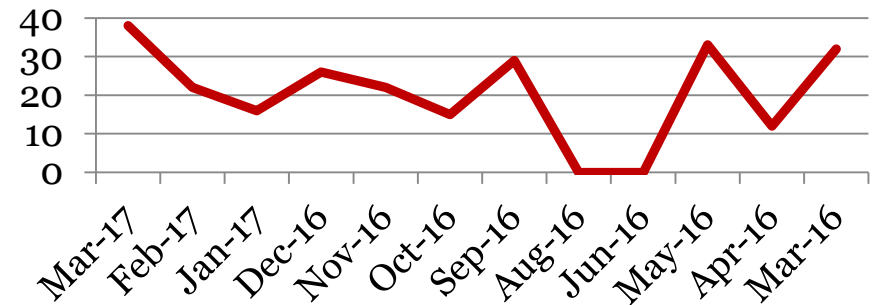
Tardies: Number of students tardy 5 or more days:

	9	10	11	12	Total
Mar-17	9	11	8	10	38
Feb-17	7	7	2	6	22
Jan-17	6	3	3	4	16
Dec-16	3	9	5	9	26
Nov-16	7	5	2	8	22
Oct-16	1	5	4	5	15
Sept-16	4	11	9	5	29
Aug-16	0	0	0	0	0
June-16	0	0	0	0	0
May-16	11	4	10	8	33
Apr-16	5	2	3	2	12
Mar-16	11	7	6	8	32

Total Student Tardies



Students over Threshold

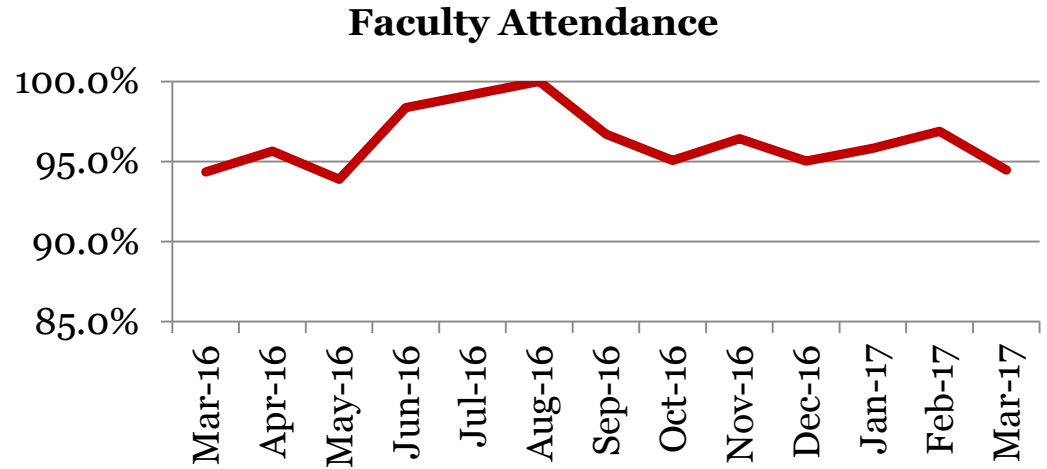


Attendance – Faculty

Derby High School

Average daily percent present:

	Total
Mar-17	94.5
Feb-17	96.9
Jan-17	95.8
Dec-16	95.0
Nov-16	96.4
Oct-16	95.1
Sept-16	96.7
June-16	98.4
May-16	93.9
Apr-16	95.6
Mar-16	94.3



**This indicator reflects certified staff and does not include absences created by class trips, professional development, workman’s comp and FMLA. However % may be reduced due to long term illness beyond FMLA.*

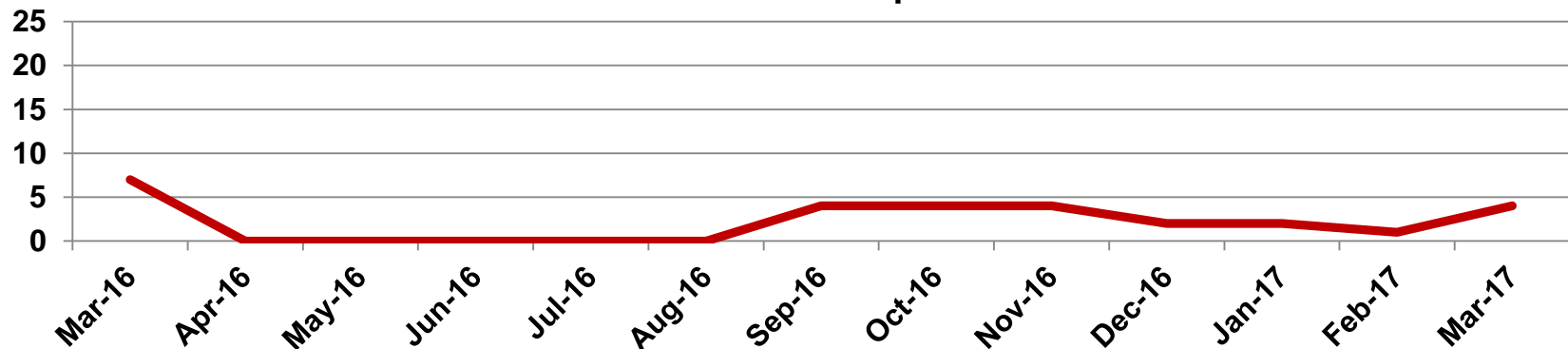
Suspensions – Out of School

Derby High School

Number of student suspensions (total days of suspension):

	9		10		11		12		Total	
Mar-17	3	(22)	0	(0)	1	(2)	0	(0)	4	(24)
Feb-17	1	(2)	0	(0)	0	(0)	0	(0)	1	(2)
Jan-17	0	(0)	0	(0)	1	(10)	1	(5)	2	(15)
Dec-16	1	(10)	1	(10)	0	(0)	0	(0)	2	(20)
Nov-16	2	(15)	1	(3)	1	(2)	0	(0)	4	(20)
Oct-16	2	(20)	0	(0)	2	(13)	0	(0)	4	(33)
Sept-16	1	(2)	0	(0)	2	(15)	1	(3)	4	20
Jun-16	0	(0)	0	(0)	0	(0)	0	(0)	0	(0)
May-16	0	(0)	0	(0)	0	(0)	0	(0)	0	(0)
Apr-16	1	(10)	0	(0)	0	(0)	0	(0)	1	(10)
Mar-16	3	(22)	1	(10)	1	(3)	2	(12)	7	(47)

Total Out of School Suspensions

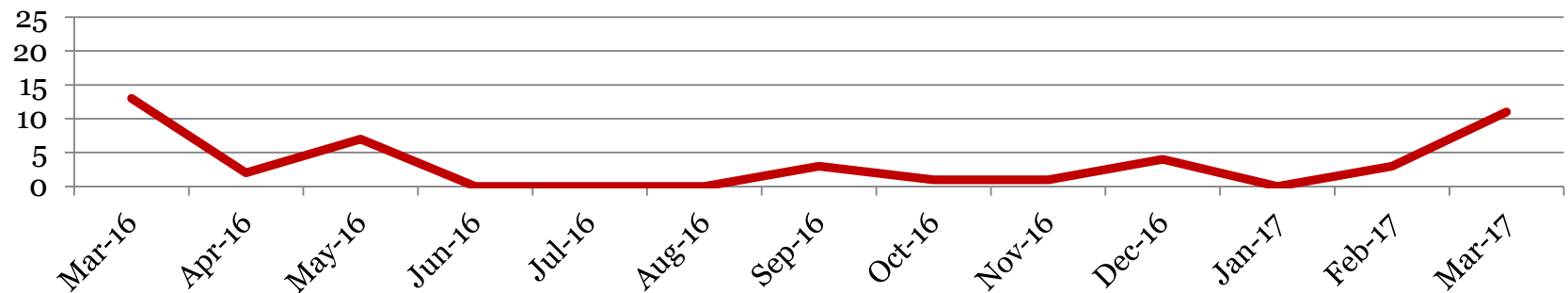


Suspensions – In School

Number of student suspensions (total days of suspension):

	9		10		11		12		Total	
Mar-17	1	(2)	8	(0)	2	(3)	0	(0)	11	(5)
Feb-17	2	(4)	0	(0)	1	(1)	0	(0)	3	(5)
Jan-17	0	(0)	0	(0)	0	(0)	0	(0)	0	(0)
Dec-16	2	(2)	2	(3)	0	(0)	0	(0)	4	(5)
Nov-16	0	(0)	1	(1)	0	(0)	0	(0)	1	(1)
Oct-16	1	(1)	0	(0)	0	(0)	0	(0)	1	(1)
Sept-16	1	(1)	2	(2)	0	(0)	0	(0)	3	(3)
Jun-16	0	(0)	0	(0)	0	(0)	0	(0)	0	(0)
May-16	6	(7)	0	(0)	0	(0)	1	(1)	7	(8)
Apr-16	0	(0)	1	(1)	0	(0)	1	(2)	2	(3)
Mar-16	2	(2)	2	(3)	2	(2)	7	(13)	13	(20)

Total In School Suspensions



Newly Enrolled Students

	9	10	11	12	Total
Mar-17	2	2	1	0	5
Feb-17	1	0	1	0	2
Jan-17	4	3	0	1	8
Dec-16	0	0	1	0	1
Nov-16	1	1	1	0	3
Oct-16	2	3	3	1	9
Sept-16	11	1	4	1	17
Summer-16	6	5	4	5	20
June-16	0	0	0	0	0
May-16	0	1	1	1	3
Apr-16	0	1	0	0	1
Mar-16	0	0	1	0	1

Departing Students

Students who have left the school during the month for any reason:

	9	10	11	12	Total
Mar-17	2	0	2	0	4
Feb-17	1	0	0	0	1
Jan-17	1	0	0	0	1
Dec-16	1	1	1	0	3
Nov-16	0	1	0	0	1
Oct-16	3	1	3	1	8
Sept-16	1	1	1	1	4
Summer-16	13	11	2	3	29
June-16	3	0	0	0	3
May-16	1	1	2	0	4
Apr-16	1	0	0	0	1
Mar-16	2	1	0	1	4

Dropouts

Student who discontinue schooling, leave for a GED program/Job Corp, or are disenrolled by grade level.

	9	10	11	12	Total
Mar-17	0	0	0	1	1
Feb-17	0	0	0	0	0
Jan-17	0	0	0	0	0
Dec-16	0	0	0	0	0
Nov-16	0	0	0	0	0
Oct-16	0	0	0	0	0
Sept-16	1	1	0	1	3
Summer-16	1	0	0	1	2
June-16	0	0	0	0	0
May-16	0	1	2	0	3
April-16	0	1	0	0	1
Mar-16	1	0	1	0	2