

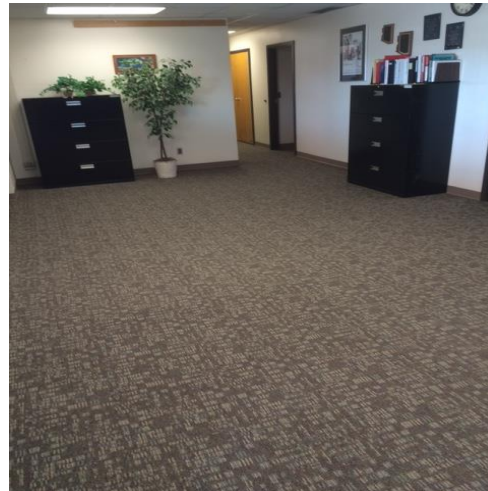
Status of Bond Projects
1/12/16 Governing Board Meeting

President Day, Board Members, Mr. Nelson,
Current Project Update:

I. INSTRUCTIONAL SPACE / PORTABLE REPLACEMENT

A. Wetmore Center Leadership & Professional Development

Project completed December 30, 2015 on schedule and on budget



Additional District work required:

Move AIA offices from Amphitheater High to Wetmore (January)

Move Federal Programs from Keeling ES to Wetmore (June)

Optional add for window replacement in School Operations area being priced

B. Mesa Verde Elementary School Addition / Remodel:

Construction is 90% complete

New Building classes began January 4th

W-2 classrooms moved into portables to make way for renovation



South Face of New Building



North Face of New Building

The Mesa Verde project is on schedule and on budget

C. Donaldson Elementary School Addition / Remodel:

The Donaldson Project began December 18, 2015

Abatement in preparation for new IDF closets

Installation of construction fence and demolition for new building construction



D. Keeling Elementary Bus Pull-Out

Project estimated completion date is January 5, 2016

The project was 6 weeks behind schedule and \$2,962 over budget
(City of Tucson water line issue being corrected)



Curbing and sidewalk

II. NEW SCHOOL

A. New Elementary School:

Design is complete

Project is on hold pending Board direction



III. Solar Construction Project

Engineering and design completed for all sites

Public Forums & Outreach have been completed at all sites

Preconstruction meetings have taken place at:

Cross MS	Harelson
Holaway	La Cima
Mesa Verde	Walker
Warehouse	

Construction is underway at:

Cross	Harelson
Holaway	La Cima
Mesa Verde	Walker
Warehouse	

Construction to begin in February pending permitting at:

Keeling	Rillito Center
Nash	Rio Vista
Transportation	Wetmore Center



La Cima



Harelson



Cross



Mesa Verde