



# Demographic Study 2018

Ector County Independent School District,  
Odessa, Texas

Resident Student Projections  
Ten Year Forecast SY2018 to SY2028

# Census Bureau: Midland posts largest population growth in nation

Midland, Odessa areas make top-five rankings from 2017 to 2018

By [Stewart Doreen](#), MRT.com/Midland Reporter-Telegram Published 5:01 pm CDT, Thursday, April 18, 2019

Summary	Census 2010	2018	2023	2018-2023 Change	2018-2023 Annual Rate
Population	137,130	163,331	175,618	12,287	1.46%
Households	48,688	57,466	61,650	4,184	1.42%
Average Household Size	2.77	2.80	2.81	0.01	0.07%

Population by Age	Census 2010		2018		2023	
	Number	Percent	Number	Percent	Number	Percent
0 - 4	12,075	8.8%	13,534	8.3%	14,434	8.2%
5 - 9	11,256	8.2%	13,068	8.0%	13,933	7.9%
10 - 14	10,356	7.6%	12,270	7.5%	13,533	7.7%
15 - 19	10,579	7.7%	11,324	6.9%	12,619	7.2%
20 - 24	10,914	8.0%	11,862	7.3%	11,989	6.8%
25 - 34	19,714	14.4%	25,855	15.8%	26,231	14.9%
35 - 44	16,395	12.0%	19,962	12.2%	23,417	13.3%
45 - 54	18,201	13.3%	17,876	10.9%	18,242	10.4%
55 - 64	13,686	10.0%	17,976	11.0%	17,911	10.2%
65 - 74	7,654	5.6%	11,804	7.2%	14,138	8.1%
75 - 84	4,828	3.5%	5,667	3.5%	6,929	3.9%
85+	1,472	1.1%	2,133	1.3%	2,242	1.3%

Source: U.S. Census Bureau, Census 2010 Summary File 1. ESRI forecasts for 2018 and 2023

Work  
accomplished  
by DD for  
Ector County  
Independent  
School District



Created customized  
GIS data set for  
District.



Researching  
residential  
development.

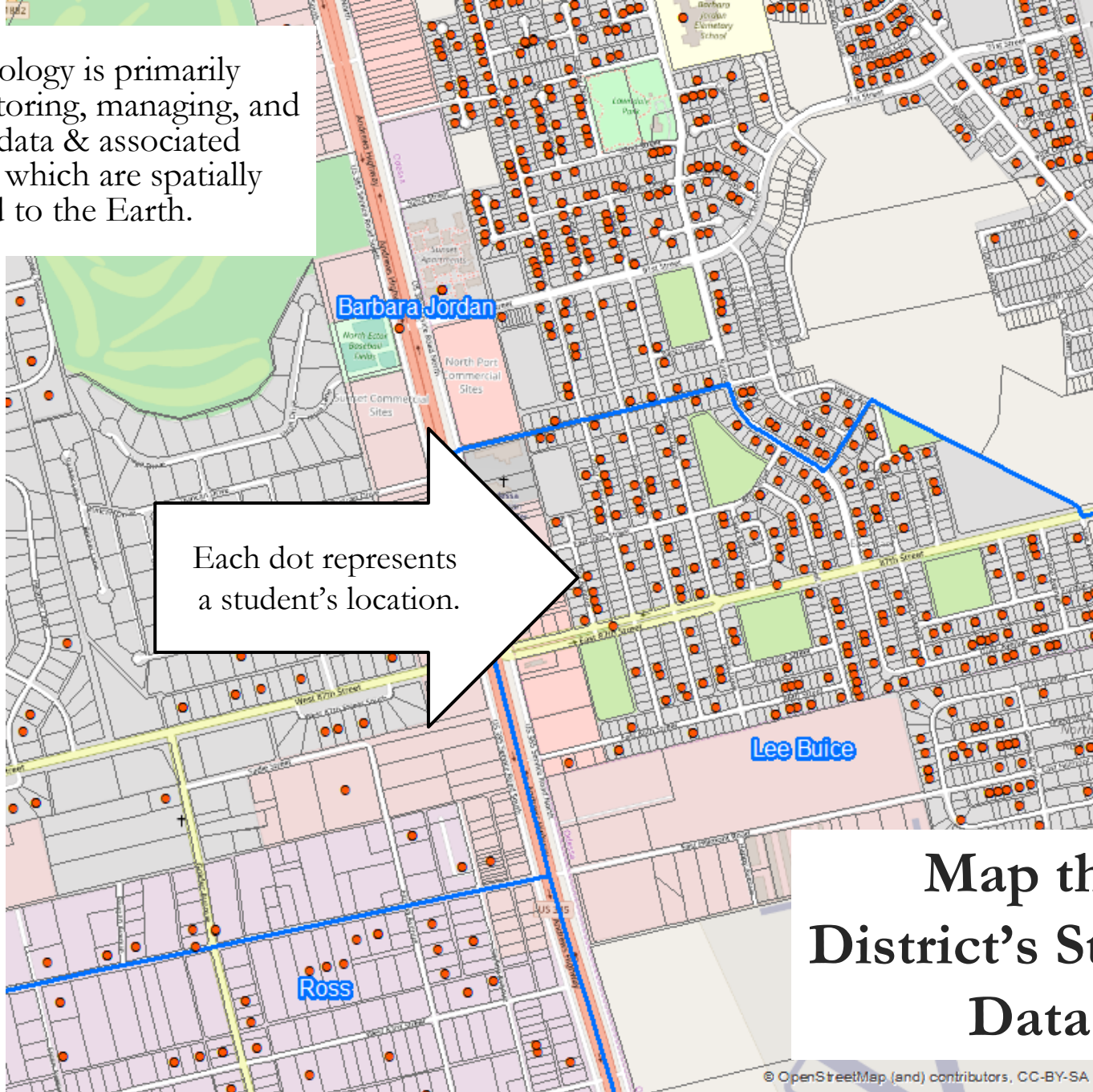


Developing resident student forecasts  
for SY2019 to SY2028, by grade level  
for each elementary, middle school,  
freshman, and high school  
attendance area.



Analyzes current and future  
demographic dynamics of the  
district and attendance areas.

GIS technology is primarily used for storing, managing, and analyzing data & associated attributes, which are spatially referenced to the Earth.



Each dot represents a student's location.

# Map the District's Student Data

# District Address Look Up Tool

The screenshot displays the SchoolSite Locator interface for Ector County ISD. The top navigation bar includes the district name, a search bar with the address "802 N. Sam Houston Odessa TX", a language selection dropdown, and utility links for "Tools", "Basemap", and "Boundaries". A "Welcome to SchoolSite Locator!" message box provides instructions on how to use the search function. The main map area shows various school districts in different colors, including Noel ES, Pease ES, San Jacinto ES, Bowie MS, Odessa HS, Dowling ES, and Blackshear ES. A popup window titled "Closest approximate address found:" displays the results for the search address, listing the nearest schools and their contact information.

Welcome to SchoolSite Locator!  
Enter an address in the search box at the top to find your schools of attendance!  
If you do not know the specific address, or if it cannot be found, just click anywhere on the map to find the schools for that neighborhood.

Ector County ISD 802 N. Sam Houston Odessa TX Select Language Tools Basemap Boundaries

Closest approximate address found:  
1201 W 22nd St Odessa Texas 79763

**San Jacinto ES**  
[Serving grades K-5]  
1000 W. 19th St Odessa  
432-456-1219  
NOTES: Erin Bueno  
School Actions: [Dropdown]

**Bowie MS**  
[Serving grades 6-8]  
500 West 21st Street Odessa  
432-456-0439  
NOTES: Shelia Stevenson  
School Actions: [Dropdown]

**Odessa HS**  
[Serving grades 9-12]  
1301 N. Dotsy Odessa  
432-456-0029  
NOTES: Mauricio Marquez

DAVIS DEMOGRAPHICS

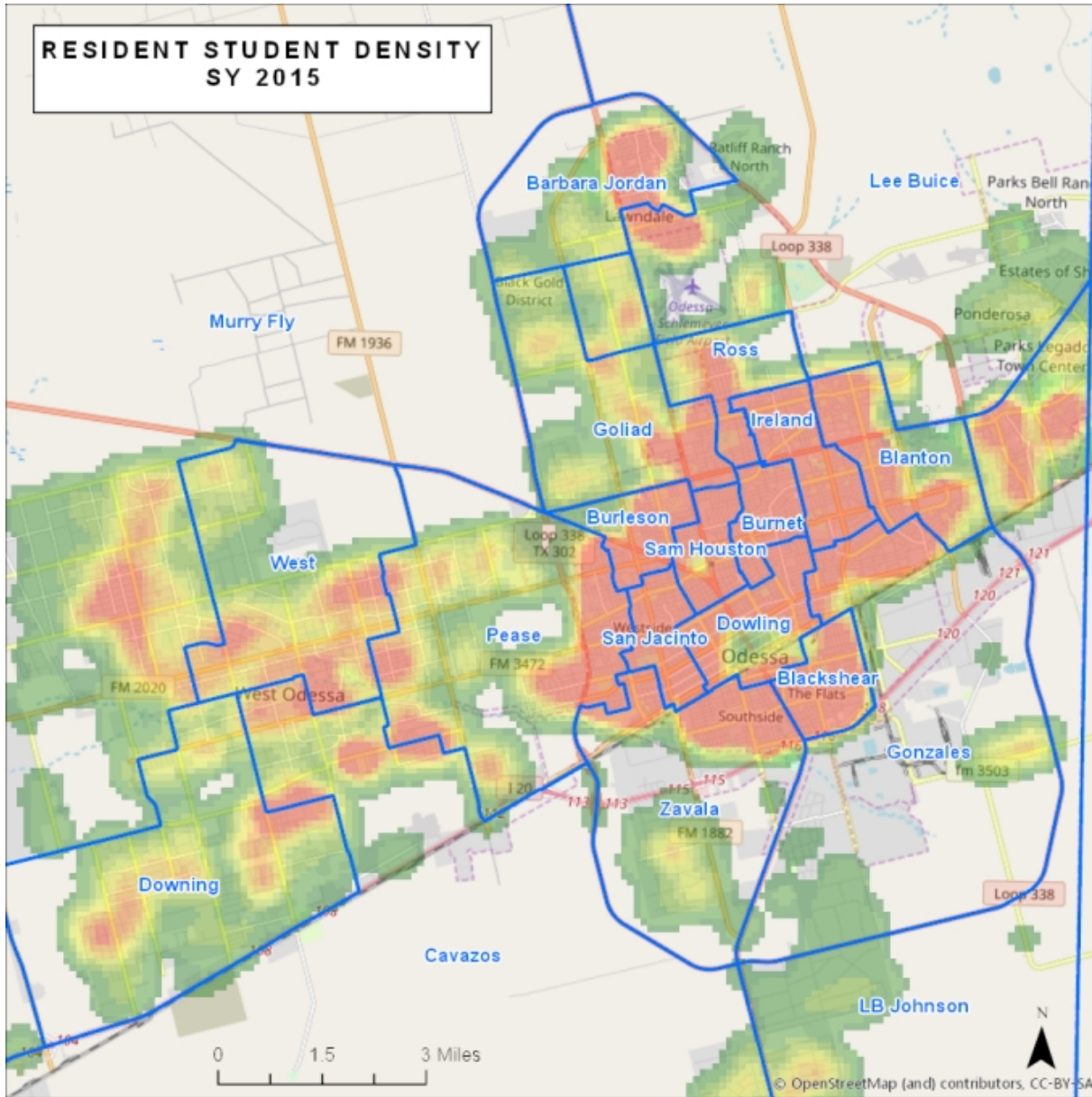
ODESSA ISD

<http://apps.schoolsitelocator.com/?districtcode=00944>

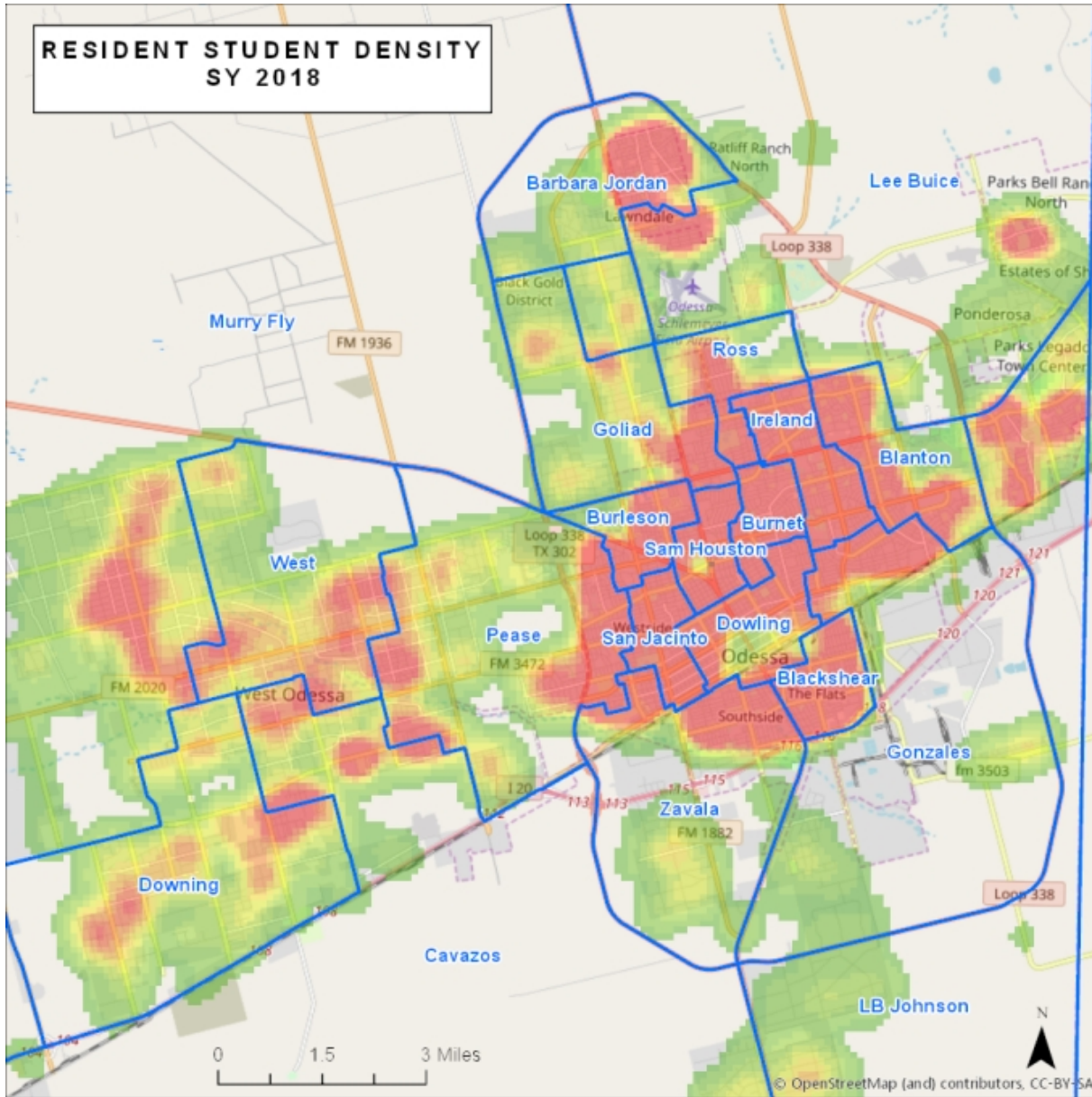
# Planning Units or Study Areas



Detailed splitting of attendance zones into smaller study areas.



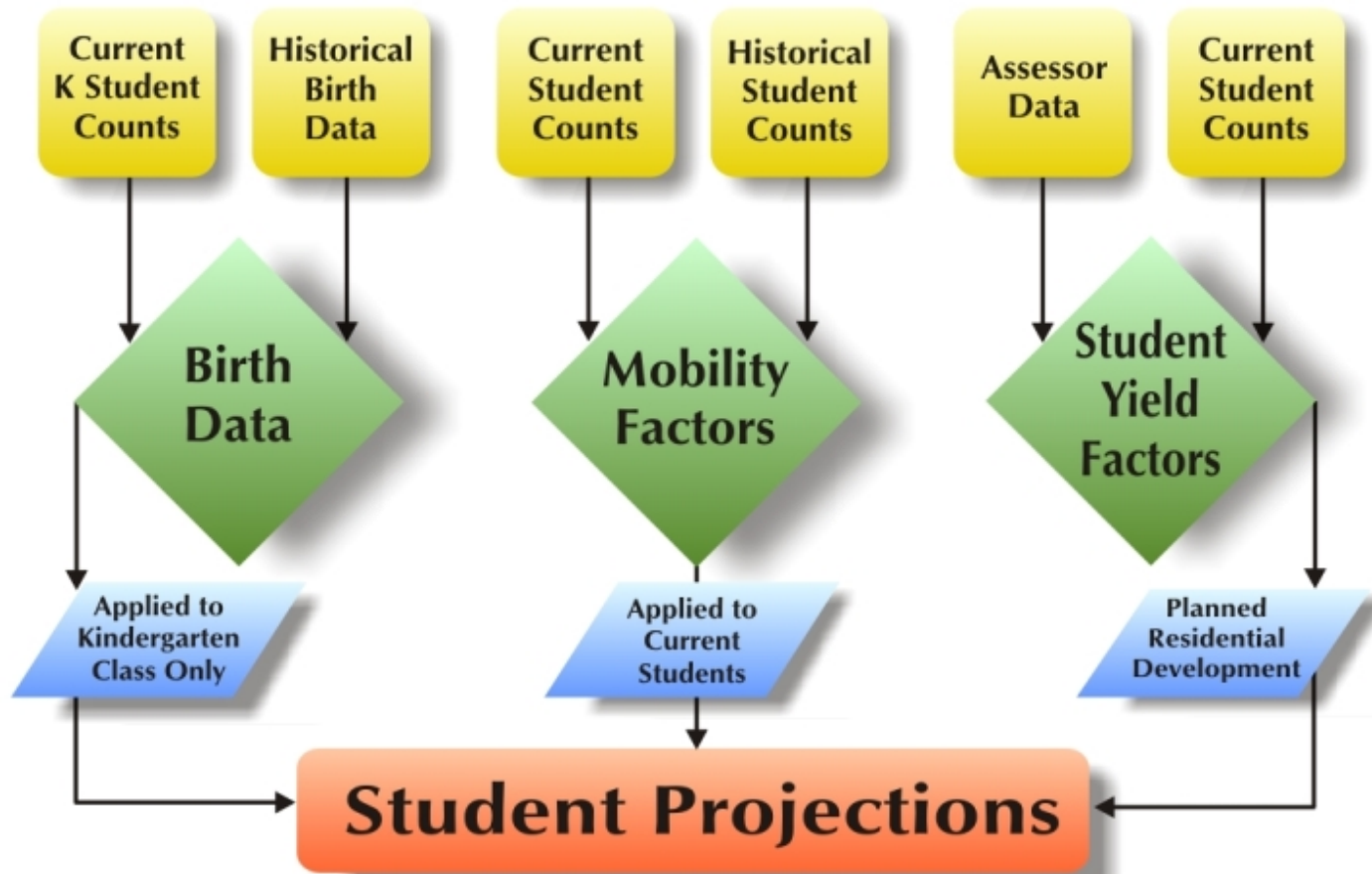
The areas in red indicate the highest student density in the district.



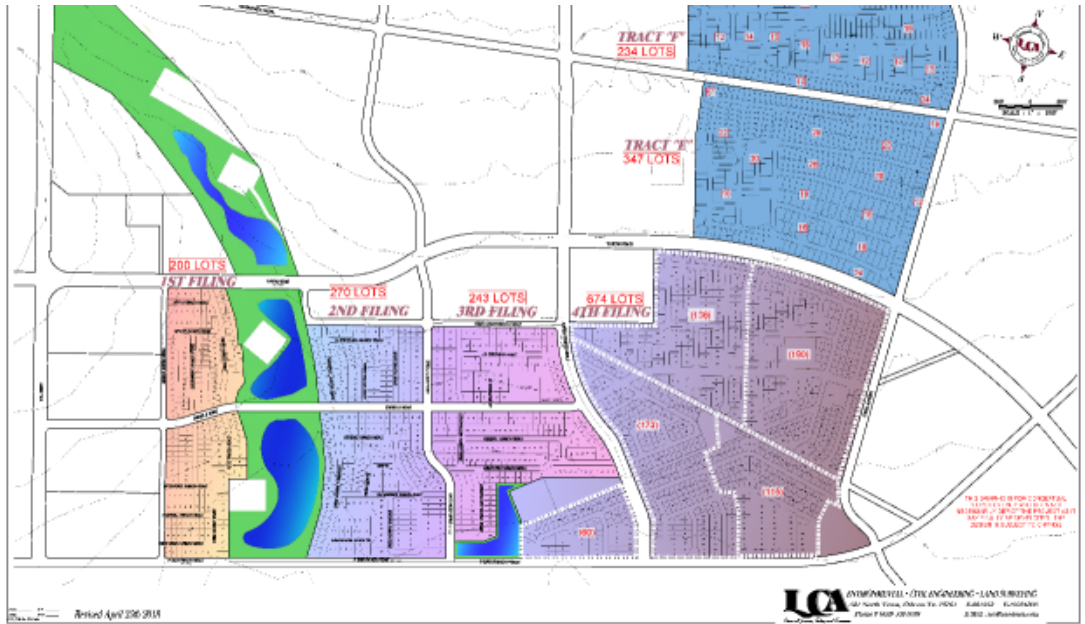
The areas in red indicate the highest student density in the district.



# Davis Demographics Projection Methodology



**MASTER PLAN  
RATLIFF RIDGE**  
An Addition to the City of Odessa,  
Being a Subdivision of 203.0 Acres of Land in  
Section 35, Block 42, T-1-S,  
T&P RR Co. Survey, Ector County, Texas

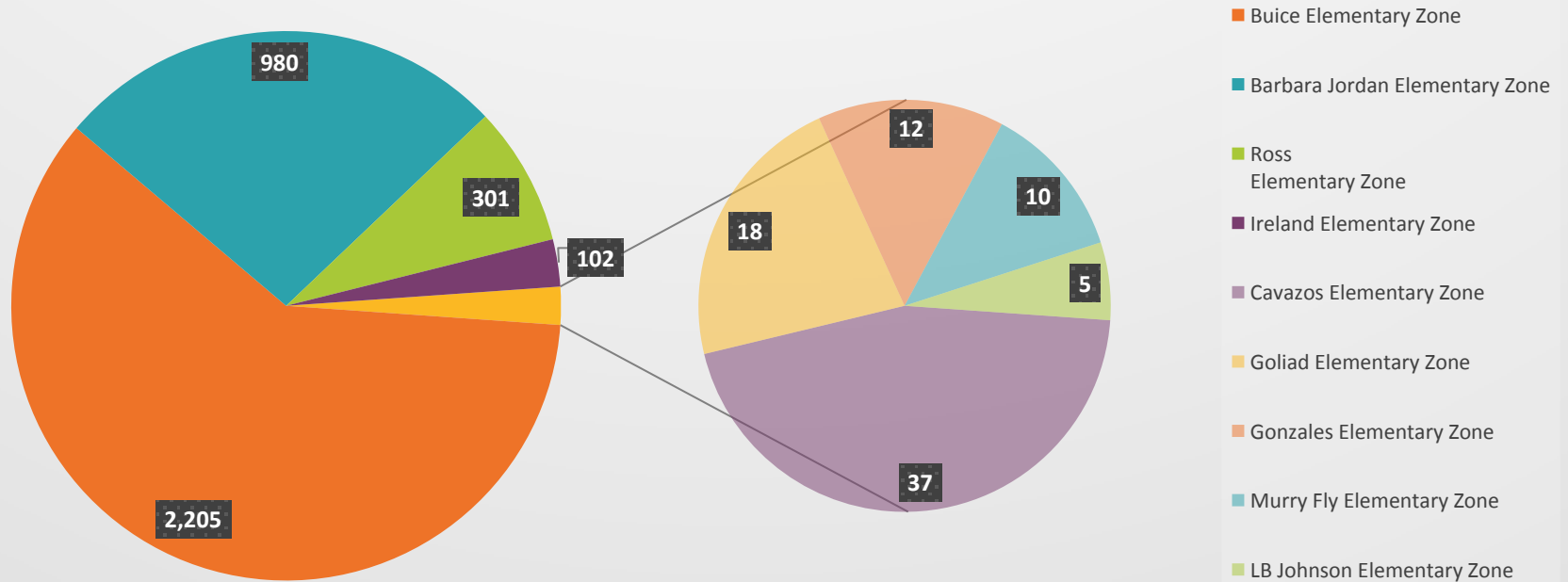


# Active or Planned Residential Development

# Active or Planned Residential Development

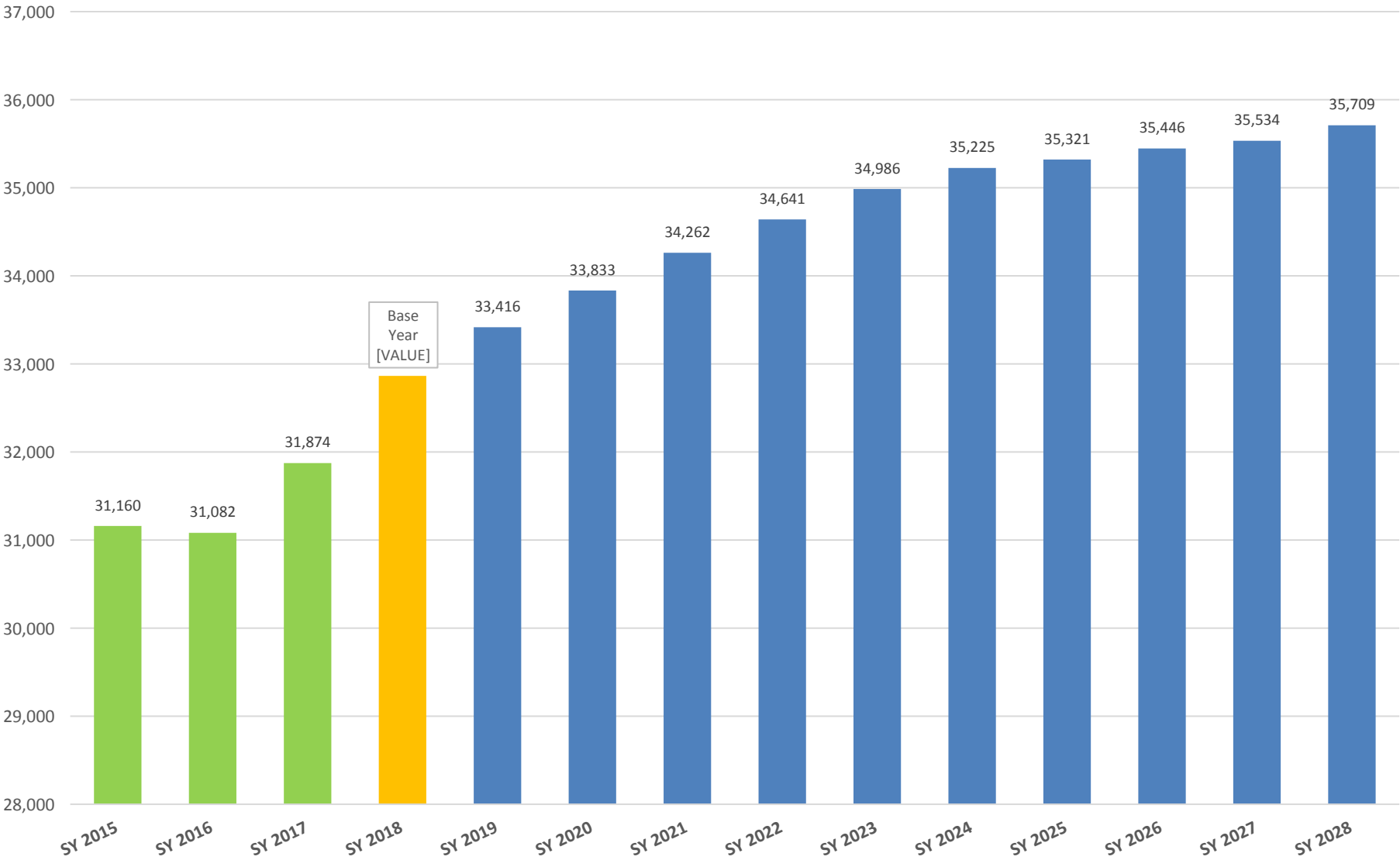
(Page 17 of Report)

## Total Residential Units by SY2028



# Current and Forecasted Student Counts in Ector County

Grades PK to 12<sup>th</sup> (Page 26 of Report)

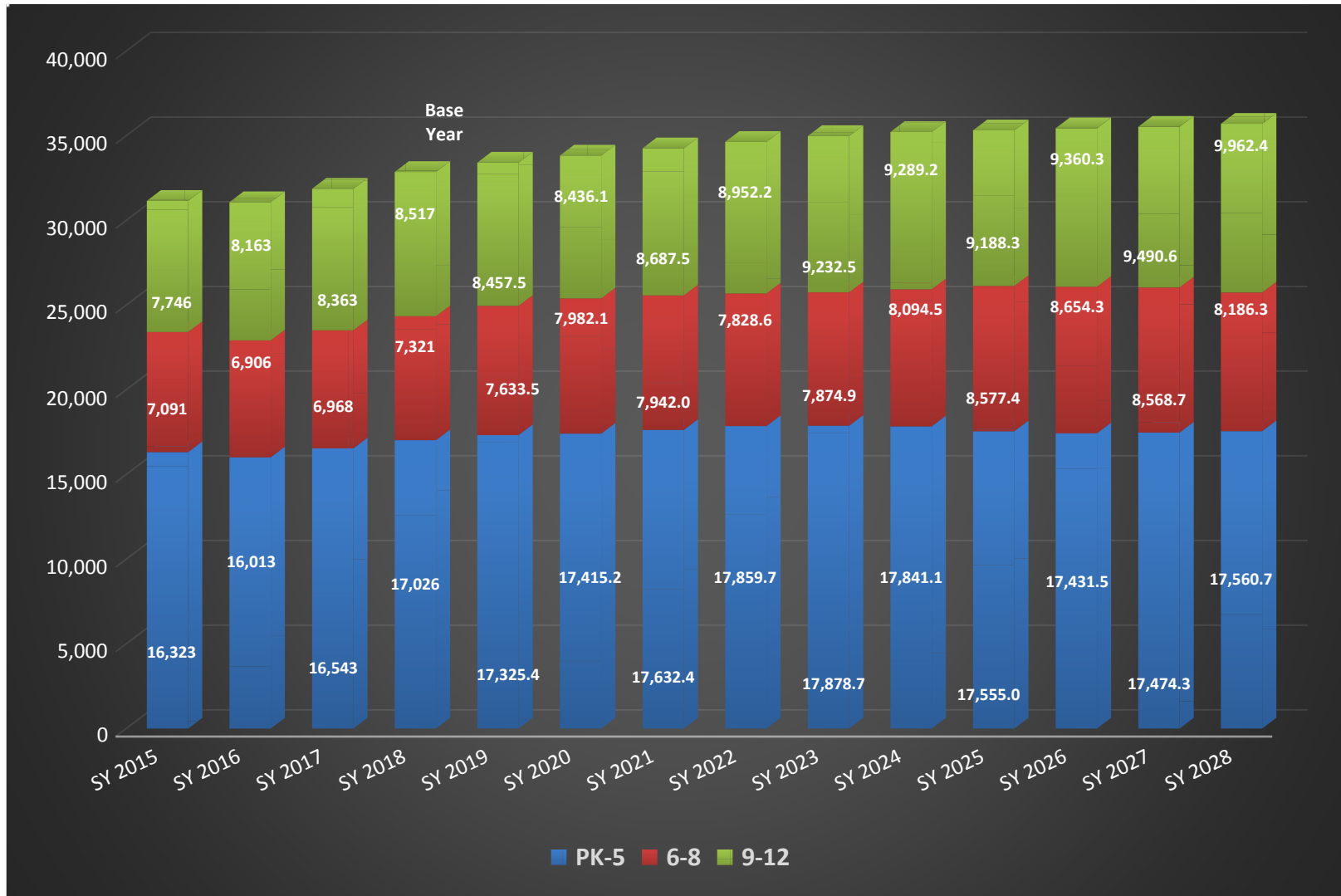


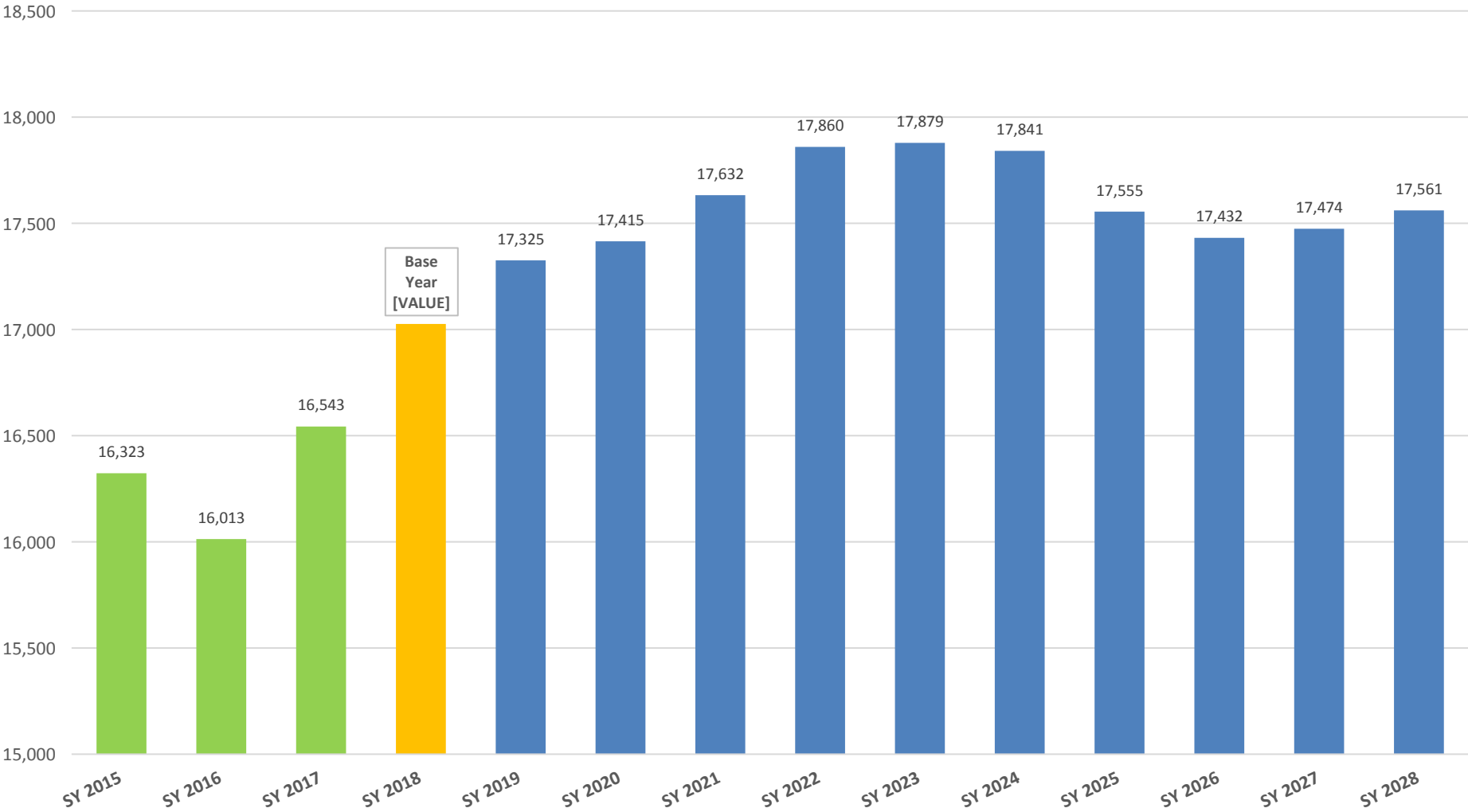
Current and Forecasted counts represent the actual or forecasted enrollment.



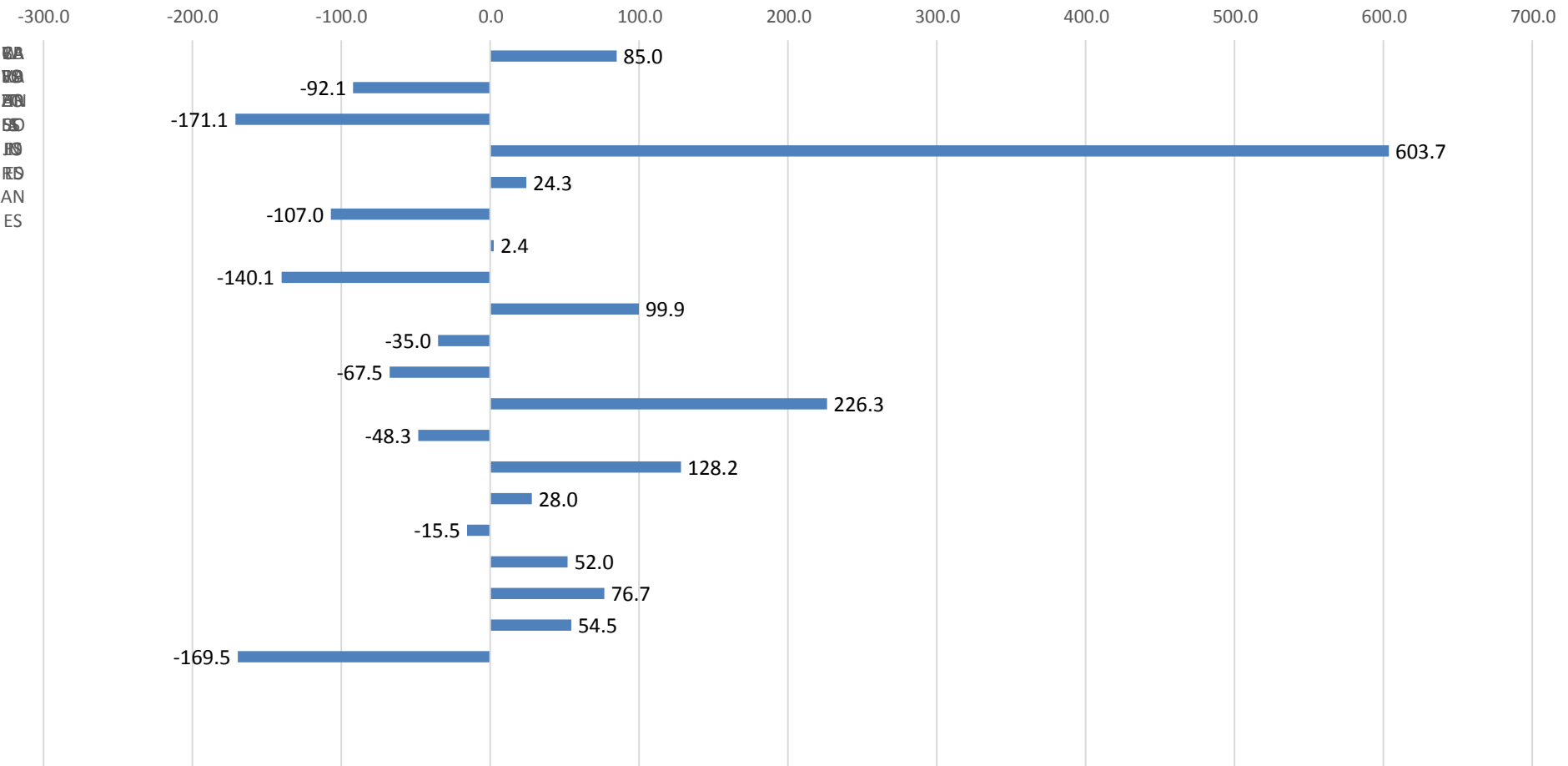
# Current and Forecasted Student Distribution

Grades PK to 12<sup>th</sup> (Page 27 of Report)



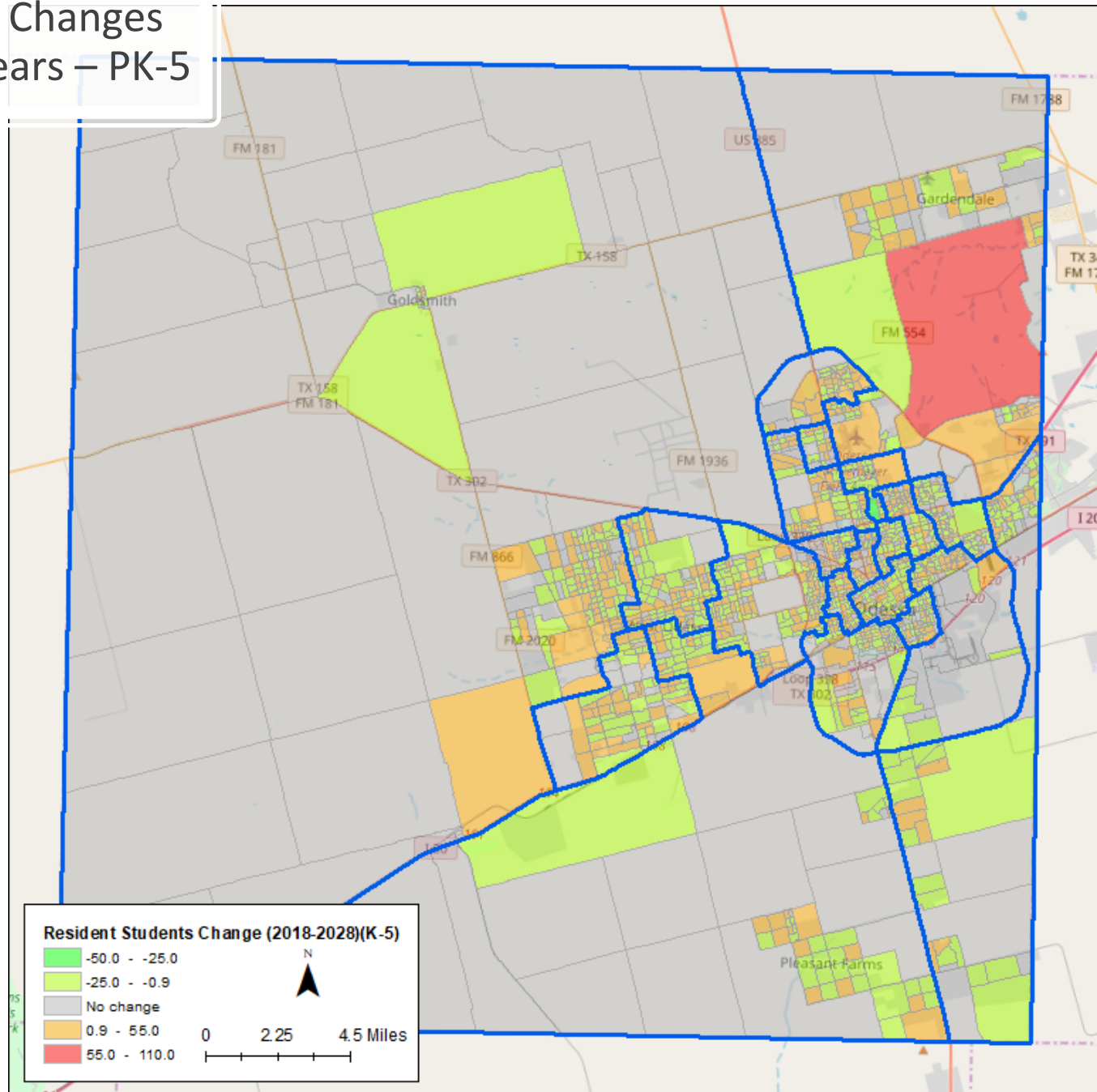


# Projected Change in Elementary School Student Population by Zone (SY2018-SY2028) (Page 30 of Report)



# Projected Changes over Ten Years – PK-5

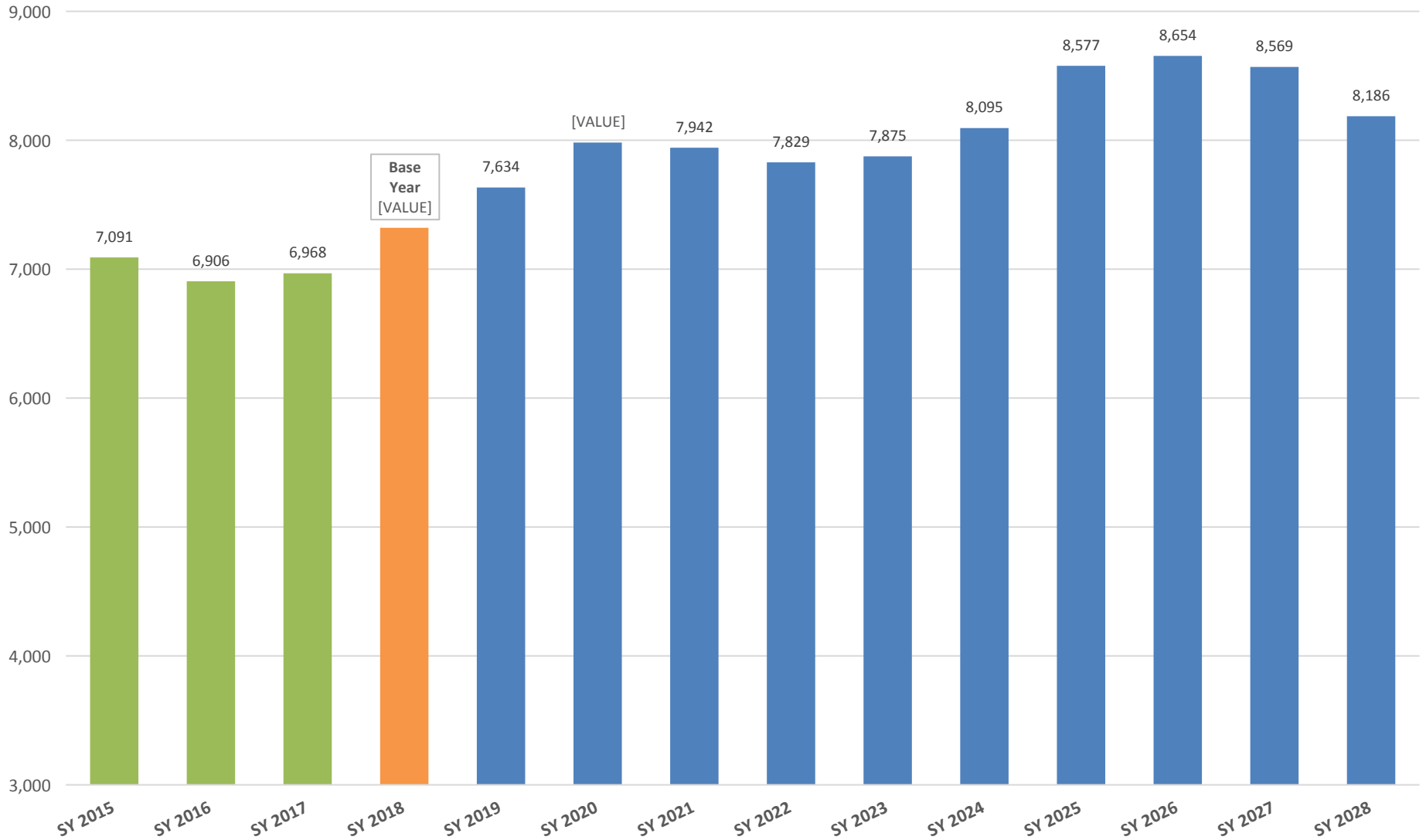
(Page 78 of Report)



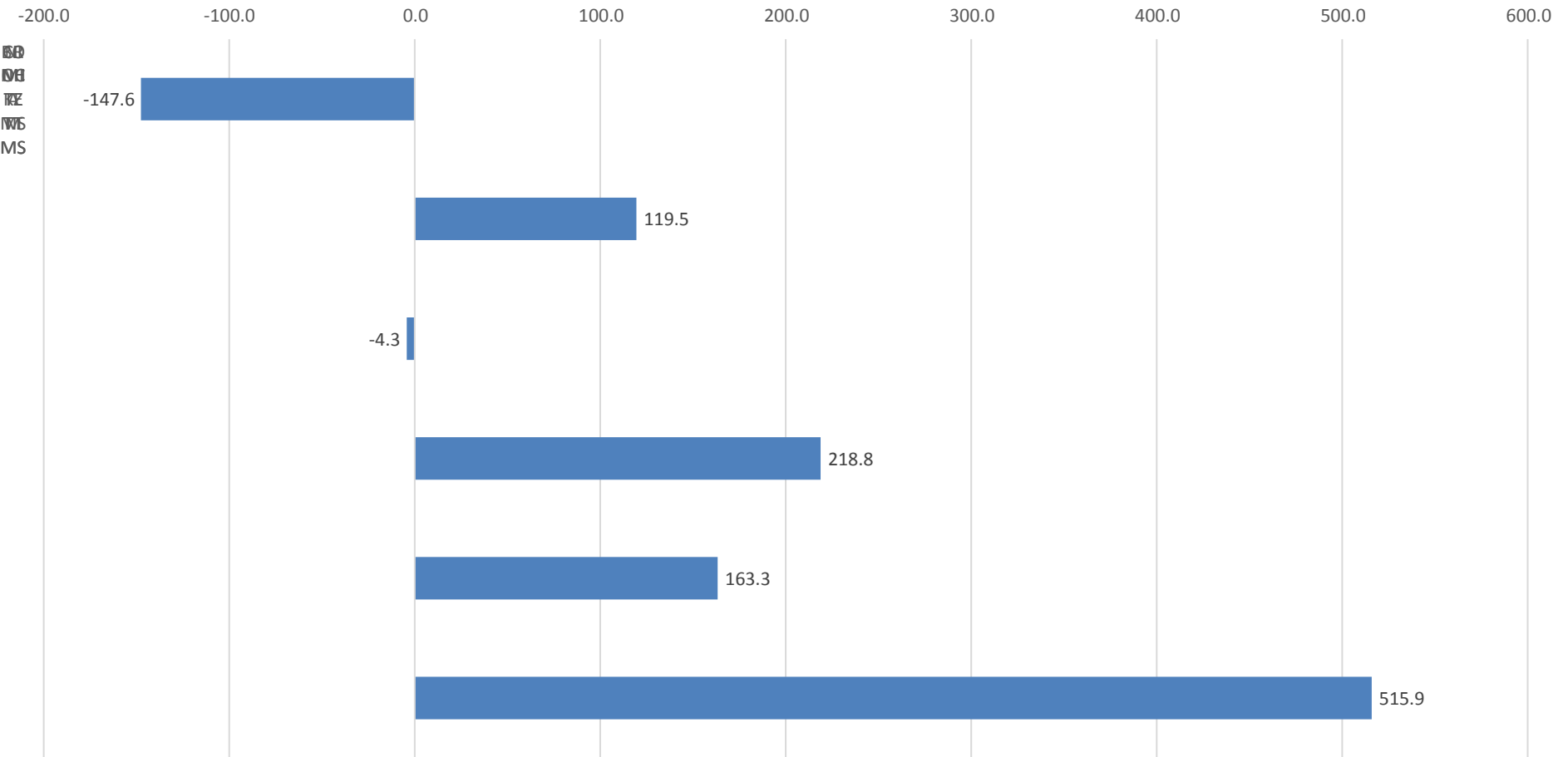


# Current and Forecasted Student Counts in Ector County

Grades 6<sup>th</sup> to 8<sup>th</sup> (Page 79 of Report)

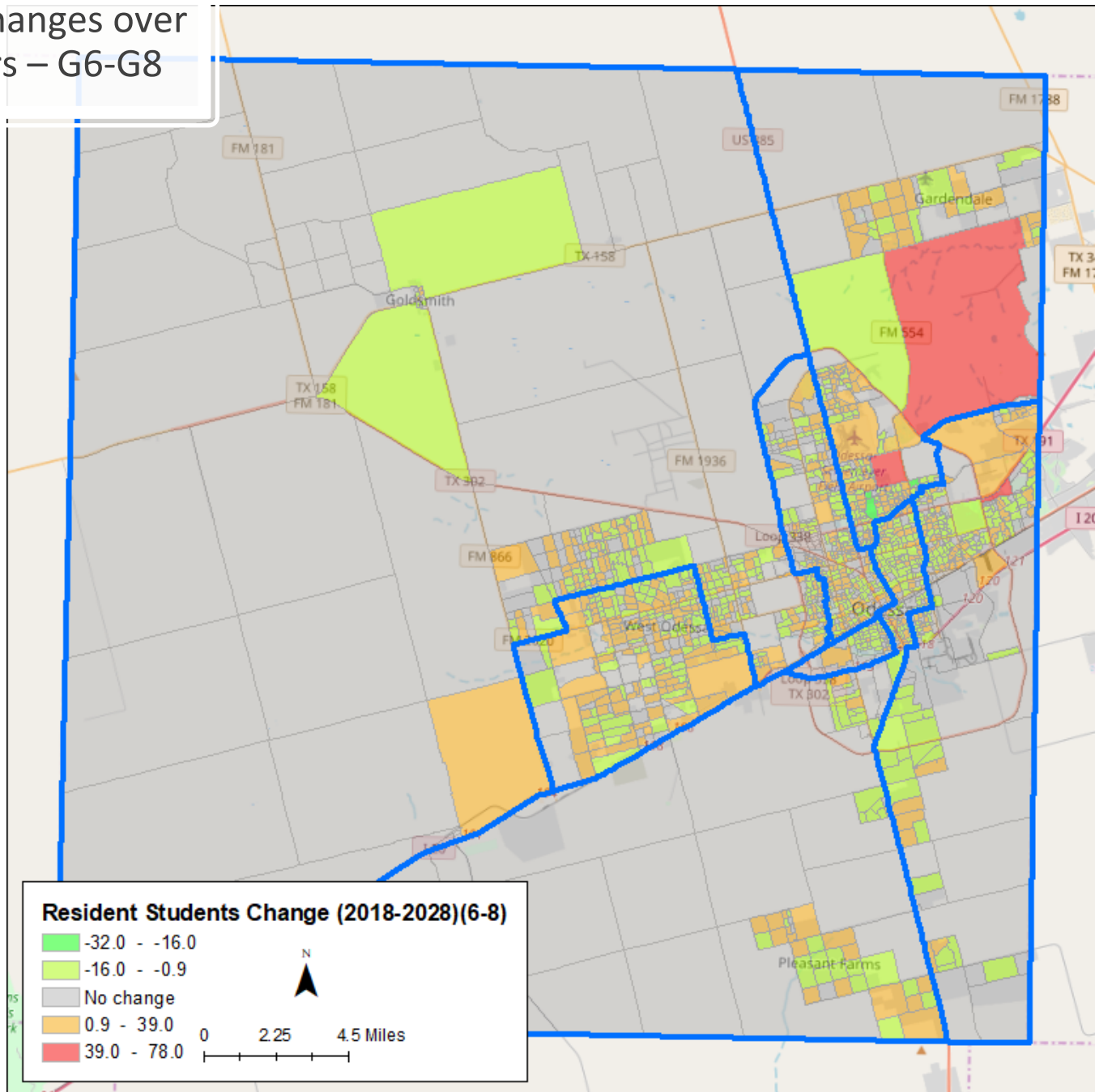


# Projected Change in Middle School Student Population by Zone SY2018-SY2028 (Page 80 of Report)



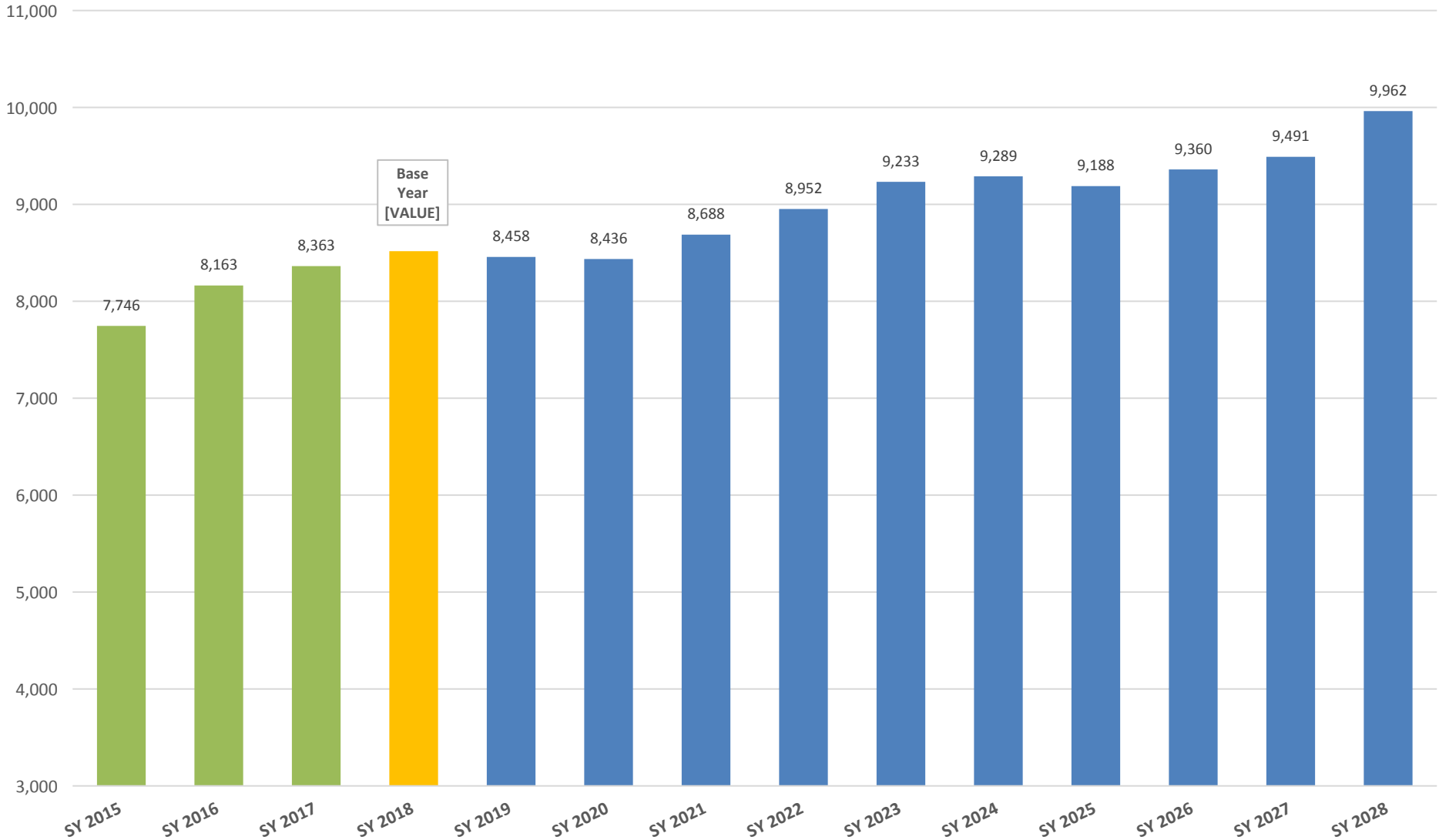
# Projected Changes over Seven Years – G6-G8

(Page 89 of Report)



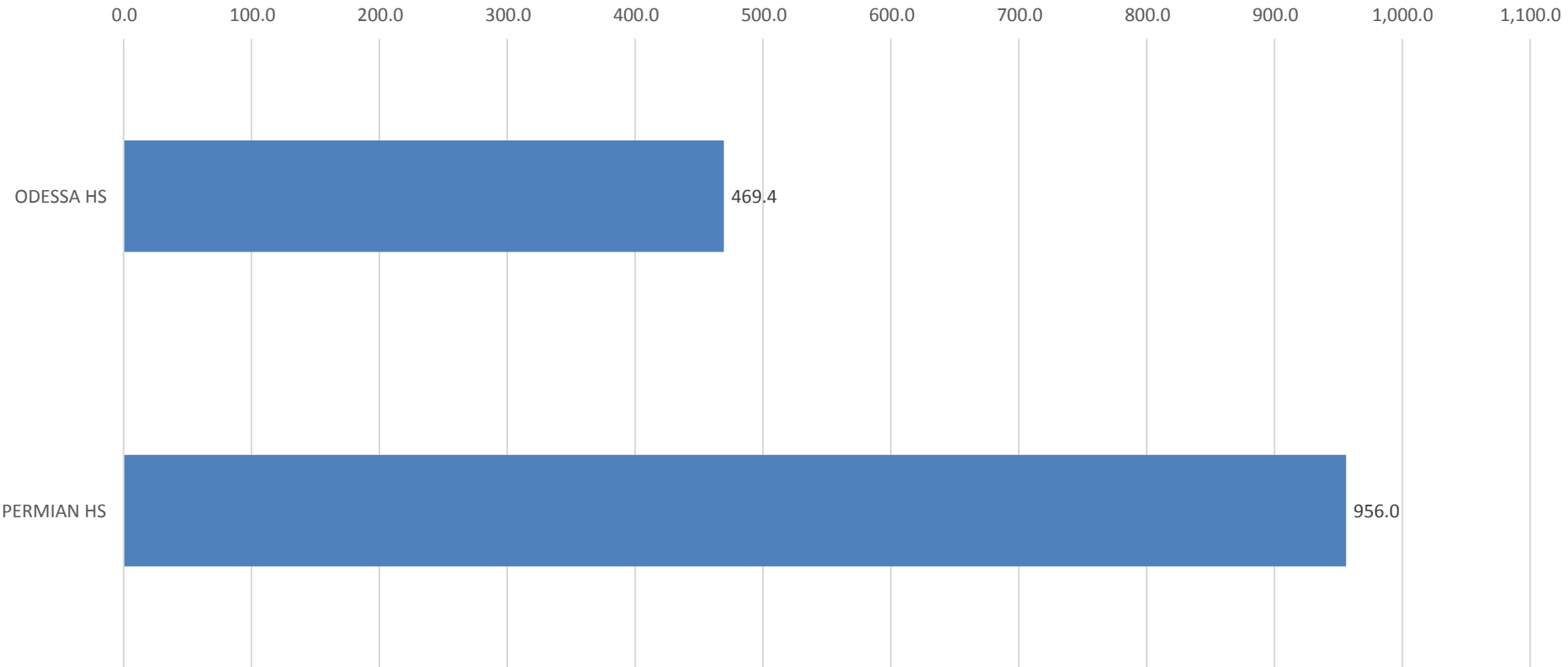
# Current and Forecasted Student Counts in Ector County

Grades 9<sup>th</sup> to 12<sup>th</sup> (Page 90 of Report)



# Projected Change in High School Student Population by Zone SY2018-SY2028

(Page 91 of Report)



# Projected Changes over Ten Years – G9-G12

(Page 95 of Report)

