



SPRING BRANCH ISD

Natatorium Educational Specifications

Presentation to Board of Trustees – September 8, 2025

Agenda

1. Recap: **Introduction to Educational Specifications**
2. Explore: **Natatorium Educational Specification Process & Stakeholders**
3. Consider: **Natatorium Educational Specifications**
4. Conclude: **Next Steps & Questions**

A photograph of two water polo players in a pool. The player on the left wears a white cap with the number 17. The player on the right wears a dark cap with the number 18 and is holding a yellow water polo ball. The background shows a pool lane with a red cone and a person in white pants. The text 'Recap: Introduction to Educational Specifications' is overlaid in white with a yellow vertical bar to the left.

Recap: Introduction to Educational Specifications

Definition: Educational Specifications

- **Texas Education Agency (TEA) requires all school districts** to create and review a written educational program that guides the design process of new proposed facilities or major renovations.
- **Educational specifications provide the link** between learning and the design of educational facilities.
- **Educational specifications should support the overall educational goals of the district** yet be nimble enough to allow for the effective and efficient design of school facilities.
- **Educational specifications provide specific facility needs** to complement the district's educational delivery model.
- This document is a **living document**, in need of periodic updates on a 5-year basis.

**Introduction to Educational Specifications presented by
Stantec Architects on August 11, 2025*



Applicability: Educational Specifications

- Effective for capital improvement projects starting November 1, 2021
- Campus / facility types that require an Educational Specification:
 - **Instructional Support Buildings**
 - Elementary School
 - Middle School
 - High School
 - **Non-Instructional Support Buildings**
 - Auditorium
 - Natatorium
 - Stadium
- Educational Specifications must be adopted by the Board of Trustees

**Introduction to Educational Specifications presented by
Stantec Architects on August 11, 2025*



A swimmer in a pool, seen from behind, with arms outstretched. The swimmer is wearing a dark blue swimsuit with red trim. The background is slightly blurred, showing other people in the pool and some equipment. The overall tone is blue and aquatic.

Explore: Natatorium Educational Specification Process & Stakeholders

Voices at the Table

Athletics & Operations Advisory Team

Travis Stanford, Associate Superintendent, Operations

Karen Heeth, Associate Superintendent, Admin. & Talent

Christina Masick, Associate Superintendent, Technology

Paige Hershey, Executive Director of Athletics

Troy Neal, Executive Director, Technology

Cheryl Etlinger, Director of Athletics

Michael Stokebrand, Coordinator of Athletics

George Kutac, Natatorium Facilitator/Diving Coach

David Hughes, Director of IPM/Grounds

James Mora, Director of Facility Services

Geoffrey Bay, Director of Planning & Construction

Kristen Luciano, Project Lead, Technology

Consultant Team

Brandon Ross, Managing Senior Principal, PBK

Juan Lopez, Director of Sports Planning & Design, PBK

Trace Cryer, President, DIG Engineers, PBK

Philip Stewart, Principal, PBK

Caroline Harris, Principal, Director of Planning, PBK

Darren Bevard, President/Chief Operating Officer,
Counsilman-Hunsaker (*Aquatics Specialist*)



Timeline of Past Events

Natatorium
Educational Specifications
Meeting 01
March 18, 2025

Natatorium
Educational Specifications
Meeting 03
April 24, 2025

Natatorium Tours
Regional & Local
June 19-20, 2025

Natatorium
Educational Specifications
Meeting 02
April 2, 2025

Natatorium
Educational Specifications
Meeting 04
May 29, 2025

Natatorium
Educational Specifications
Meeting 05
July 16, 2025

*Meeting Preparation, Development, Collaboration occurring throughout with
SBISD Operations, Planning & Construction Team*



Natatorium Educational Specification Meetings

T
A
K
E
A
W
A
Y
S

- **Maximizing Flexibility in Dual Use of Pool to Accommodate Water Polo, Diving, and Swimming Programs**
- **Instructional Pool to Allow for Expanded Specialized Offerings such as Learn to Swim and After School Programs**
- **61-Meter Competition Pool with a Separate Instructional Pool**
- **Two Bulkheads (*One with Increased Width*) to Allow for Maximized Use of Facility and Accommodation of Program Requirements**
- **Defined Lobby and Entrance with Clear Sightlines to Competition Pool**



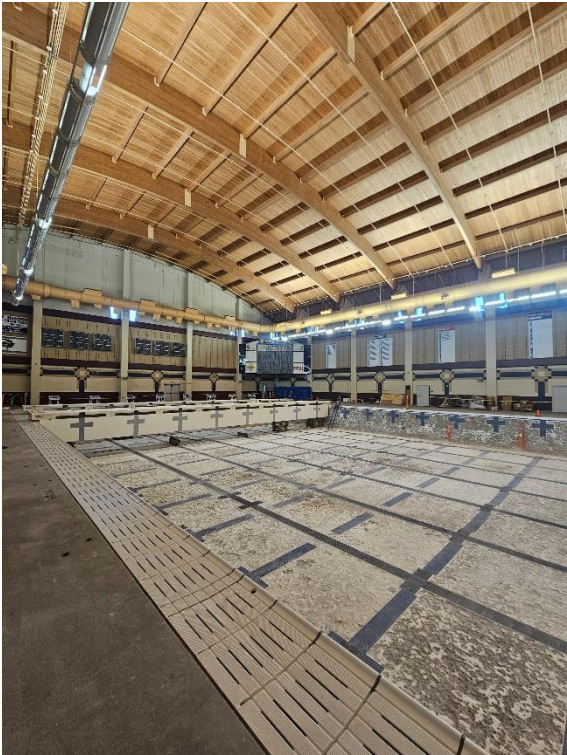
Natatorium Educational Specification Meetings

T
A
K
E
A
W
A
Y
S

- **Elevated Bleacher Seating Separated from Pool Deck** with Downward View and **Uninterrupted Sightlines** (*No Walkway in Front*)
- **Integrated Storage and Program Space** Located Beneath Bleacher Structure for Efficient Space Utilization
- **Ample Pool Deck Circulation** Space to Support Athletic Movement and Event Operations
- **Direct Visibility** and Access from Coaches' Offices to Pool Deck to Support Supervision and Operations
- **Elevated Centralized Officials' Judging Room**



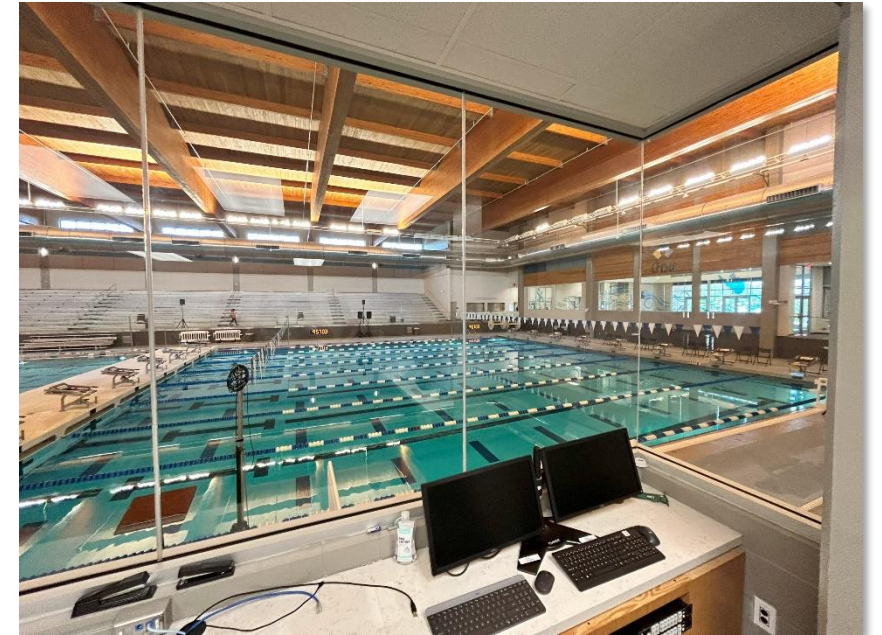
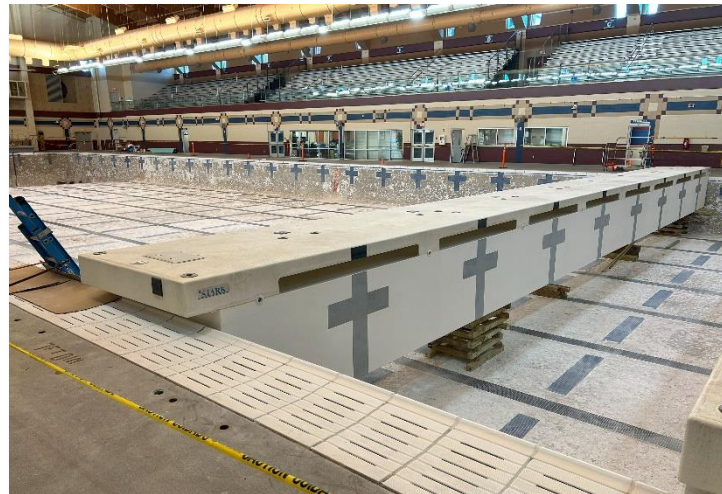
Natatorium Tours – Local



Conroe ISD



Cy-Fair ISD



Natatorium Tours – Regional



Garland ISD



SMU



Natatorium Tours – Regional & Local

T
A
K
E
A
W
A
Y
S

- **Natural Light and Reflection Considerations**
- **Interior Lighting and Glare Considerations**
- **Height and Construction Type of Elevated Bleacher System**
- **Usage of Angle Frame/Aluminum Bleachers Limiting**
- **Preference for Concrete Brushed Pool Deck** (*Minimal Maintenance, Upkeep, Maximum Durability*)
- **Bulkhead System Style and Operation** (*Allow for Movement and Flexibility*)



Natatorium Tours – Regional & Local

T
A
K
E
A
W
A
Y
S

- **Scale/Importance of Mechanical Systems; Accessibility from Outside to Inside** (*Equipment Access*)
- **Exterior Access to Storage and for Large Equipment**
- **Importance of Concession Stand Location, Serving Window, and Queuing**
- **Meet Management and Dedicated Workspace** (*Centralized Judging Area*)



A photograph of an indoor swimming pool with several lanes. A swimmer is in the foreground lane, performing a stroke. Other swimmers are visible in the background lanes. The pool is divided by blue and white lane lines. The background shows a pool deck with chairs and a person standing.

Consider: Natatorium Educational Specifications

Educational Specifications: Main Components

Strength & Training

- Weight Room & Storage
- Dry Land Training
- Sports Medicine Room

Pools

- Competition 61-Meter Pool
 - *Diving Well*
 - *2 Bulkheads*
- Instructional 25-Yard Pool
 - *3 Lanes*

Bleacher Seating

- Fixed Aluminum Bleacher Seating (1,000)
- Tilt & Roll Aluminum Bleacher Seating (500)
- Underneath Bleacher Storage

Locker Rooms

- Boys' & Girls' Locker Rooms, Showers, & Restrooms
- Guest & Visitors' Changing Room, Showers & Restrooms
- Storage Rooms

Equipment & Mechanical

- Equipment Room, PH Buffer Room, Sanitizer Room
- Laundry



Educational Specifications: Main Components

Administration

- Lobby & Secured Entry Vestibule
- Information Desk / Receptionist
- Pool Facility Staff (Contract)
- Public & Facility Restrooms
- Concessions
- Meet Management
- Officials Dressing Room
- Security Office
- Lifeguard Touchdown Space
- Aquatics Director Office
- Assistant Aquatics Director Office
- Coaches Offices Bullpen & Dressing Area
- Multipurpose Room
- Designated Athletic Entry



Educational Specifications: Full Program of Spaces

Administration
Space / Function
Lobby & Secured Entry Vestibule
Information Desk/Receptionist
Pool Facility Staff (Contract)
Public Restrooms – Women
Public Restrooms – Men
Facility Restroom
Concessions
Meet Management
Officials Dressing Room
Security Office
Lifeguard Touchdown Space
Aquatics Director Office
Assistant Aquatics Director Office
Waiting Area
Coaches Offices Bullpen
Coaches Dressing
Multipurpose Room
Athletic Entry

Strength & Training
Space / Function
Weight Room
Dry Land Training
Weight Room Storage
Sports Medicine Room

Pools
Space / Function
Competition 61-Meter Pool
Instructional 25-Yard Pool

Bleacher Seating
Space / Function
Fixed Aluminum Bleacher Seating
Tilt & Roll Aluminum Bleacher Seating
Underneath Bleacher Storage

Locker Rooms & Equipment
Space / Function
Boys' Locker Room
Boys' Showers & Restroom
Girls' Locker Room
Girls' Showers & Restroom
Guest & Visitors' Changing Room (Water Polo)
Guest & Visitors' Showers & Restroom
Storage Rooms

Pool Equipment & Mechanical
Space / Function
Main Pool Equipment Room
PH Buffer Room
Sanitizer Room
Laundry

Educational Specifications: *For Approval*



BOARD VOTE

September 29

Educational Specifications: Program of Spaces

Administration

Space / Function

Lobby & Secured Entry Vestibule
Information Desk/Receptionist
Pool Facility Staff (Contract)
Public Restrooms – Women
Public Restrooms – Men
Facility Restroom
Concessions
Meet Management
Officials Dressing Room
Security Office
Lifeguard Touchdown Space
Aquatics Director Office
Assistant Aquatics Director Office
Waiting Area
Coaches Offices Bullpen
Coaches Dressing
Multipurpose Room
Athletic Entry

Strength & Training

Space / Function

Weight Room
Dry Land Training
Weight Room Storage
Sports Medicine Room

Pools

Space / Function

Competition 61-Meter Pool
Instructional 25-Yard Pool

Bleacher Seating

Space / Function

Fixed Aluminum Bleacher Seating
Tilt & Roll Aluminum Bleacher Seating
Underneath Bleacher Storage

Locker Rooms & Equipment

Space / Function

Boys' Locker Room
Boys' Showers & Restroom
Girls' Locker Room
Girls' Showers & Restroom
Guest & Visitors' Changing Room (Water Polo)
Guest & Visitors' Showers & Restroom
Storage Rooms

Pool Equipment & Mechanical

Space / Function

Main Pool Equipment Room
PH Buffer Room
Sanitizer Room
Laundry

A photograph of a swimming pool with several lanes. Swimmers are visible in the background, creating splashes. Lane lines with black and orange floats are visible. The water is a deep blue-green color.

Conclude: Next Steps & Questions

Next Steps

- Natatorium Educational Specifications
 - Consideration by Board of Trustees on September 29, 2025
- Tully Stadium Educational Specifications
 - Development
 - Board Consideration
- Elementary, Middle, & High School Educational Specifications
 - Development
 - Board Consideration (*Stantec Architects*)