



ADMINISTRATIVE OFFICES

3401 E. 30th Street, Suite A
Farmington, NM 87402
district.fms.k12.nm.us
Office: (505) 324-9840
Fax: (844) 833-2819

HAZARDOUS WALKING APPROVAL

WHEREAS, the Farmington School Board of Education is legally bound to extend safe transportation to students of Compulsory Attendance Age and residing within the legal walking distance from their attendance center pursuant to Section 22-16-4., supra, or Publication Education Department Regulation No. 641.3 NMAC and

WHEREAS, the Farmington School Board of Education has fully reviewed the most current traffic engineering study conducted by a state or local government agency, back-up data, cost impact and method for implementation; and

WHEREAS, The Farmington School Board of Education at its' regular meeting held March 19, 2024, approve the following hazardous walking area.

(2) Walking across roadway and/or intersection:

Site: West Murray Drive and McCormick School Road. This area serves McCormick Elementary School.

WHEREAS, The Farmington School Board of Education will immediately discontinue transportation upon the improvement of the conditions for which the transportation has been provided. It shall be the responsibility of the local school district administration to notify the state transportation director and all affected parties as soon as walking conditions are improved and temporary transportation is terminated.

THIS HAZARDOUS WALKING CONDITION IS APPROVED ON THIS 19TH MARCH, 2024

FARMINGTON MUNICIPAL SCHOOL DISTRICT SCHOOL BOARD OF EDUCATION

Board President

Date

ATTEST:

Board Secretary

Date

State Transportation Director

Date



March 7, 2024

Mr. Billy Huish
Transportation Director
Farmington Municipal Schools
2001 N. Dustin Avenue
Farmington, NM 87401

RE: SAFE WALKING – U.S. 64/MCCORMICK SCHOOL ROAD

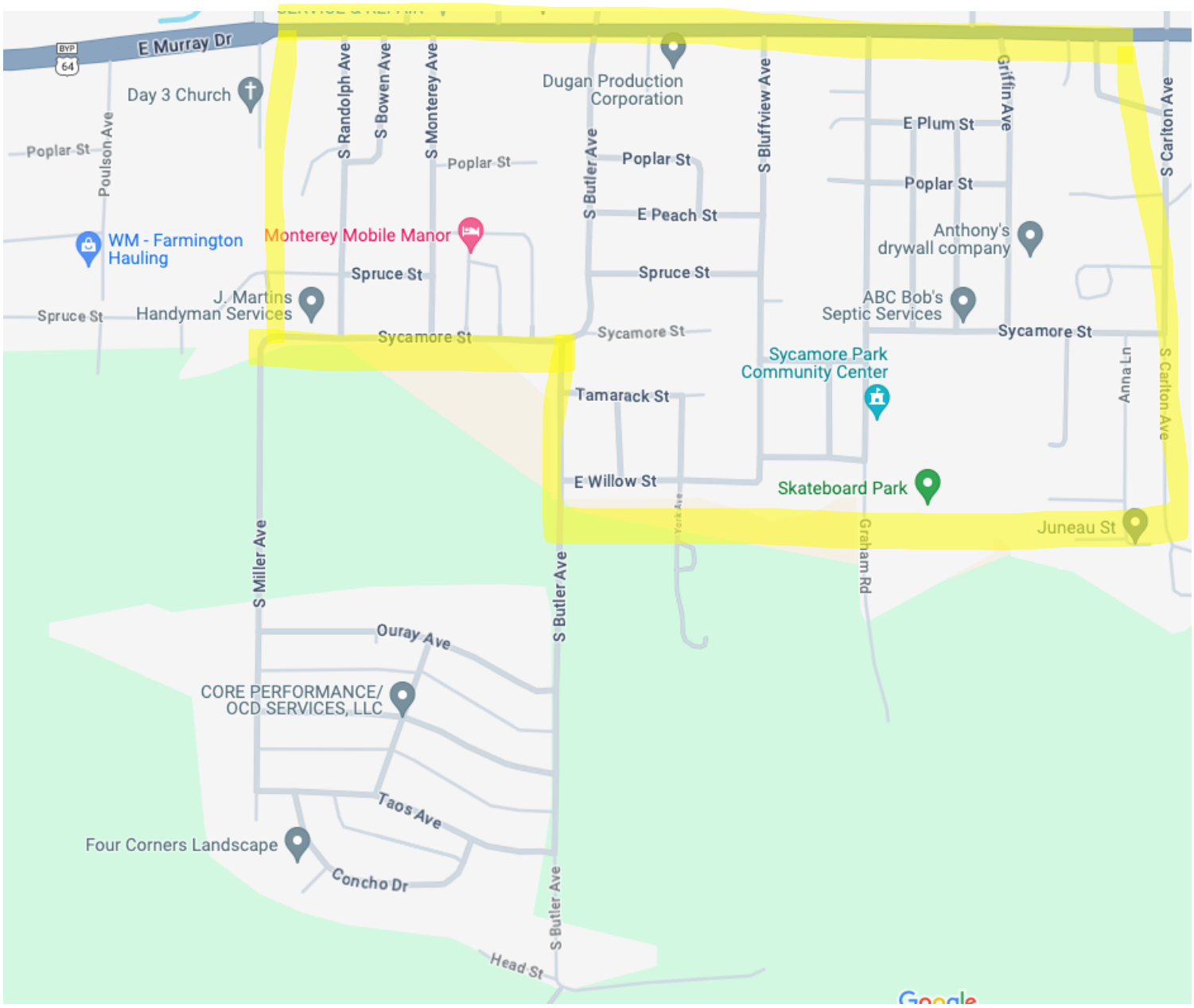
I have evaluated the walking condition at the crosswalk located at U.S. 64 (Murray Drive)/McCormick School Road. Typically, students do not utilize this crosswalk during the morning hours, and an average of twelve or so students utilize the location during the afternoon hours. As this is a major bypass in the City of Farmington, it is challenging to control the speed of motorist through this intersection, even during active school zone hours. Additionally, this route has a high volume of tractor/trailer traffic which can create blind spots for other traveling motorists. These factors create an unsafe situation for students/adults alike as they attempt to safely cross this major highway.

This crosswalk location is typically utilized by elementary school students, which creates an additional challenge for the crossing guard assigned to that location.

As a public safety representative for the Farmington Police Department, I would not recommend we continue the use of this crosswalk location. We would agree in the proposal of an additional bus stop location, south of Murray Drive, to accommodate those students who require transportation from that respective area.

Respectfully,
Lieutenant Jesse Griggs
Farmington Police Department

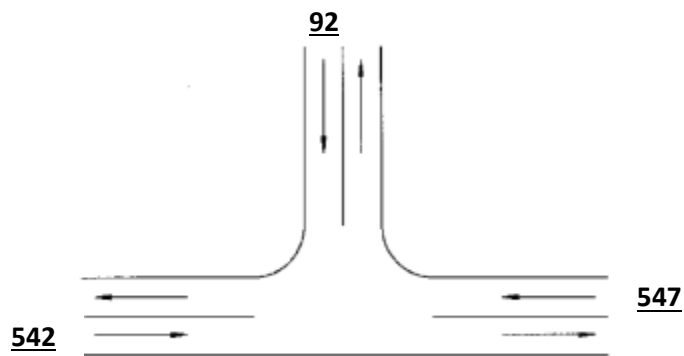
A handwritten signature in black ink that reads "Jesse Griggs". The signature is written in a cursive style with a large initial "J" and "G".





Murray Drive and McCormick School Rd

Time	Volume	Date
7 AM to 8 AM	1,181 Vehicles	3/8/2022



Time	Volume	Date
2 PM to 3:30 PM	1,434 Vehicles	3/8/2022

