

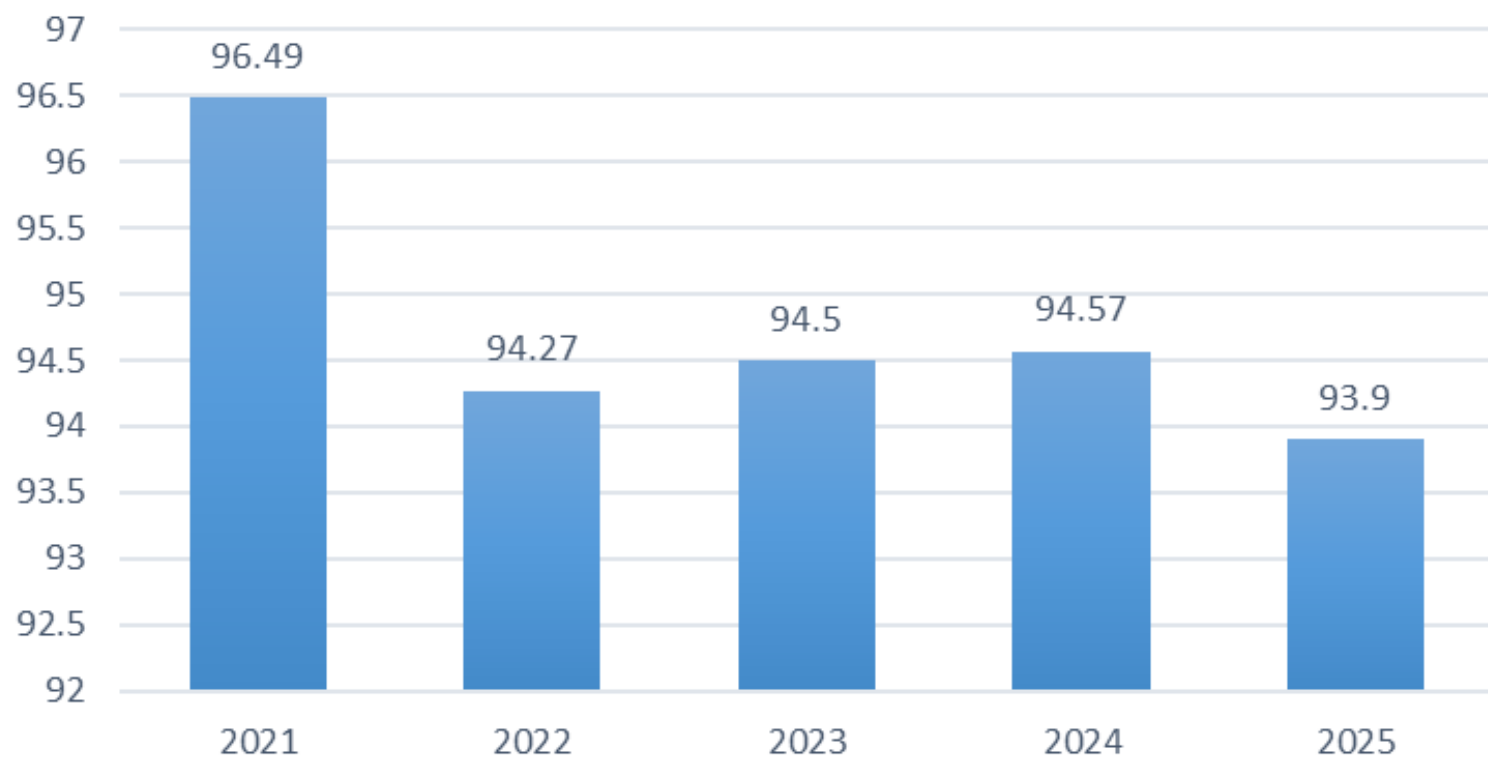
# Attendance Report: Reporting Period 6

April 14 – May 23, 2025



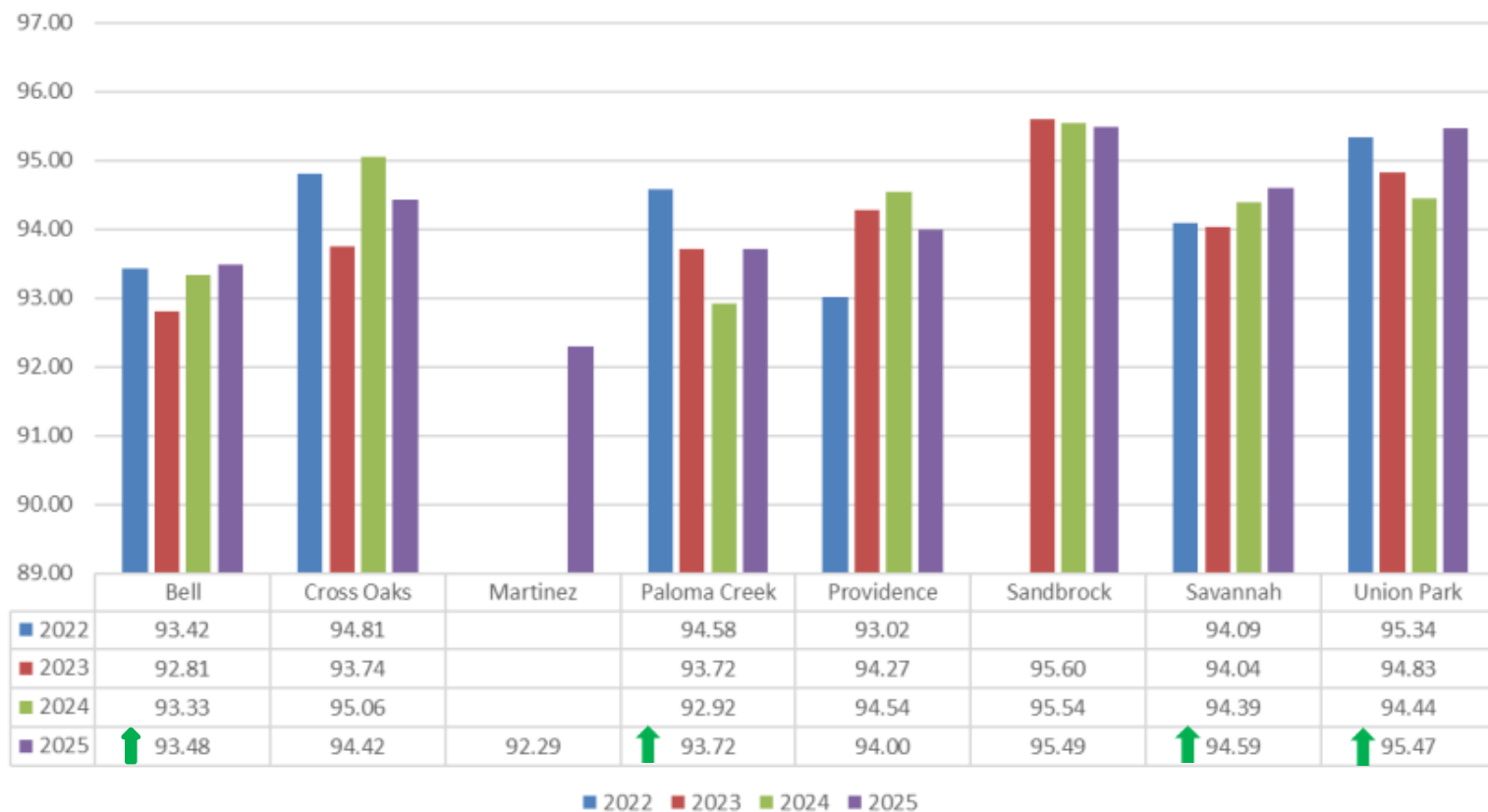
Student Support Services

## Overall District ADA RP 6



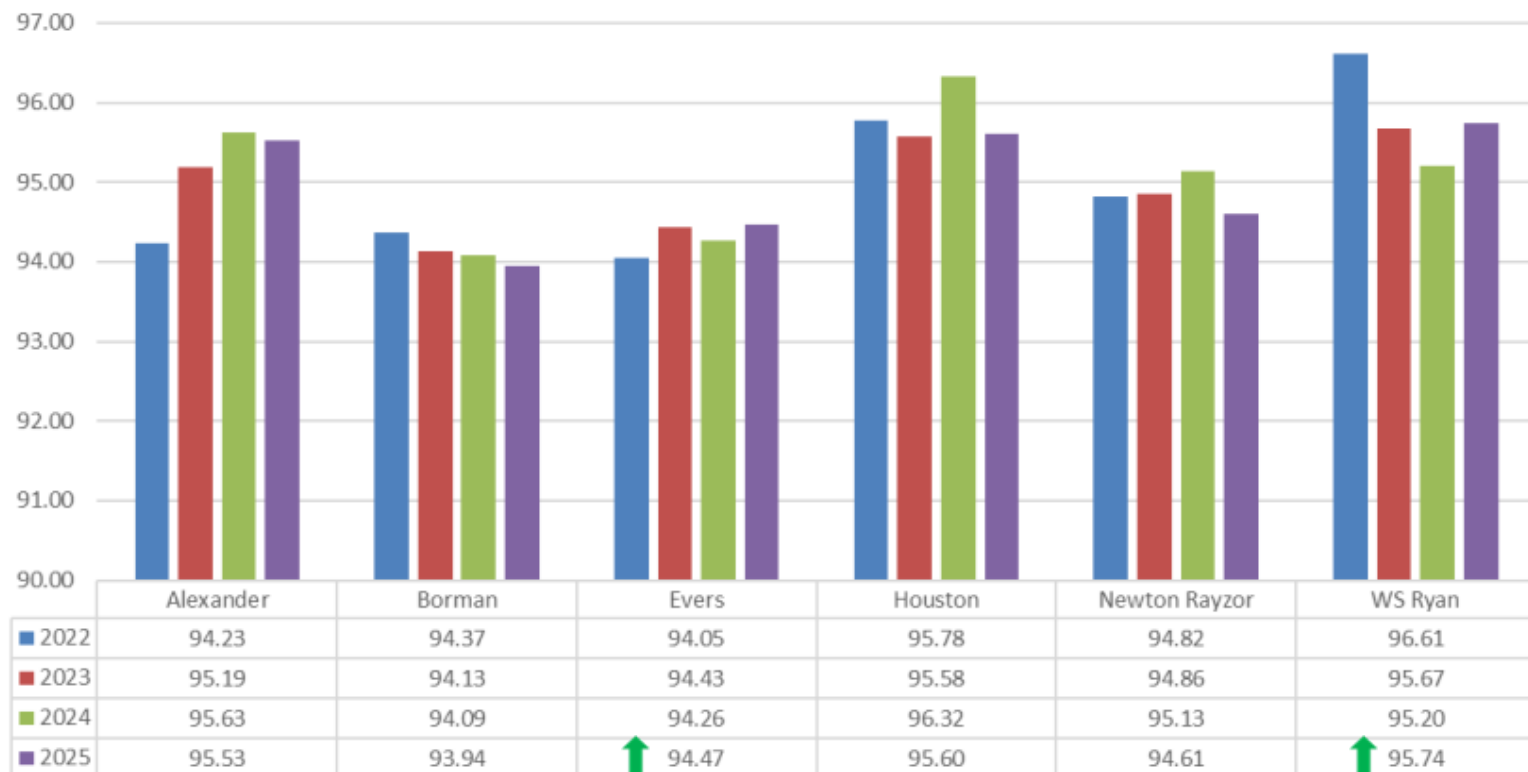
RP 6

## Braswell Zone Elementary Schools



RP 6

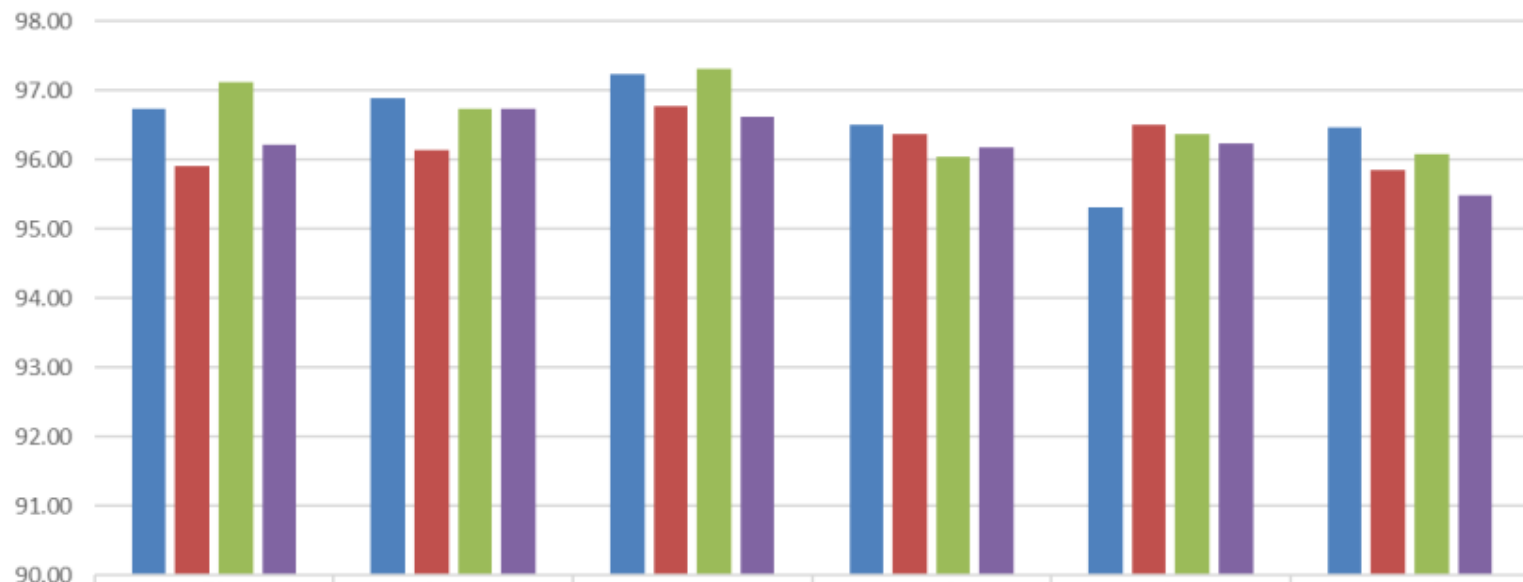
# Denton Zone Elementary Schools



■ 2022 ■ 2023 ■ 2024 ■ 2025

RP 6

# Guyer Zone Elementary Schools

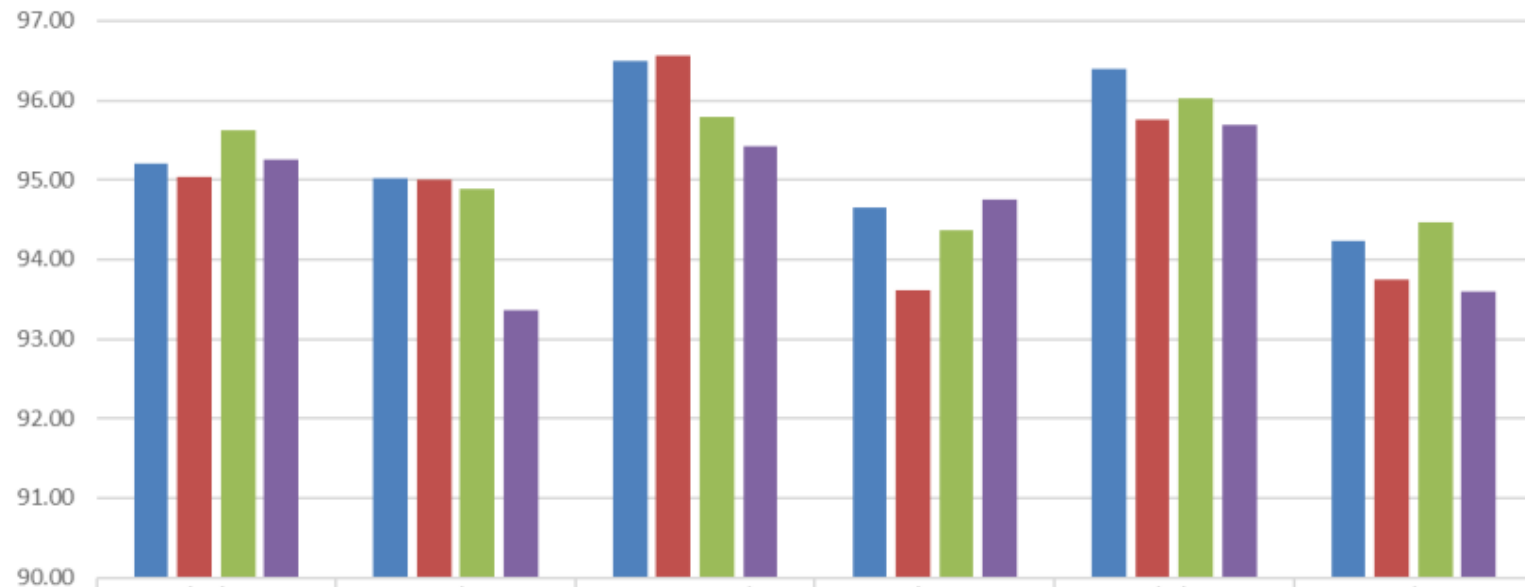


	Adkins	Blanton	EP Rayzor	Hawk	Nelson	McNair
2022	96.74	96.89	97.24	96.50	95.32	96.47
2023	95.92	96.15	96.77	96.38	96.51	95.86
2024	97.12	96.74	97.32	96.04	96.38	96.08
2025	96.21	96.74	96.63	96.18	96.24	95.49

2022 2023 2024 2025

RP 6

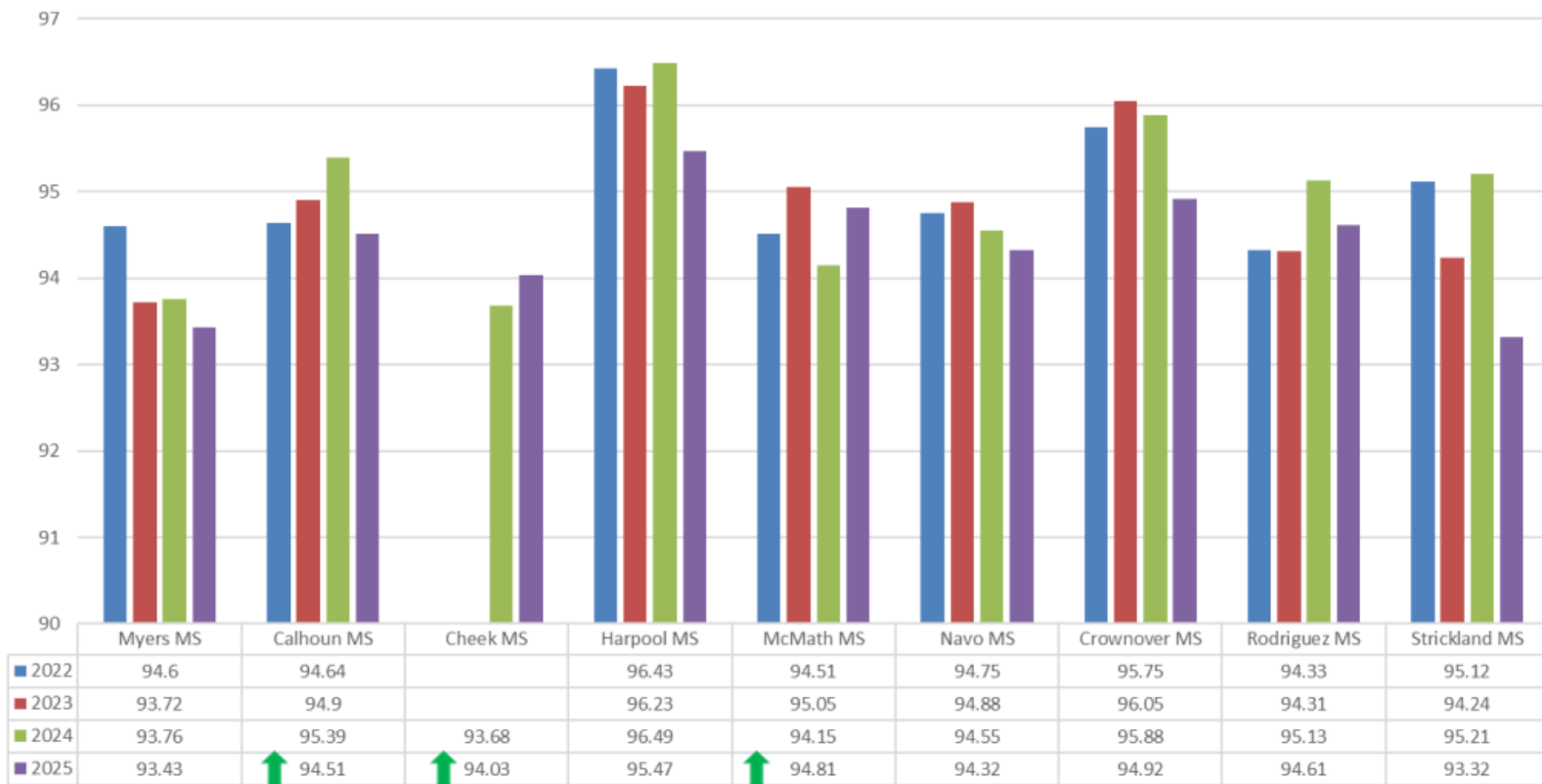
# Ryan Zone Elementary Schools



	Ginnings	Hodge	Pecan Creek	Rivera	Shultz	Stephens
2022	95.20	95.02	96.49	94.65	96.39	94.24
2023	95.04	95.00	96.56	93.62	95.75	93.75
2024	95.62	94.89	95.79	94.36	96.02	94.47
2025	95.26	93.37	95.42	94.75	95.69	93.59

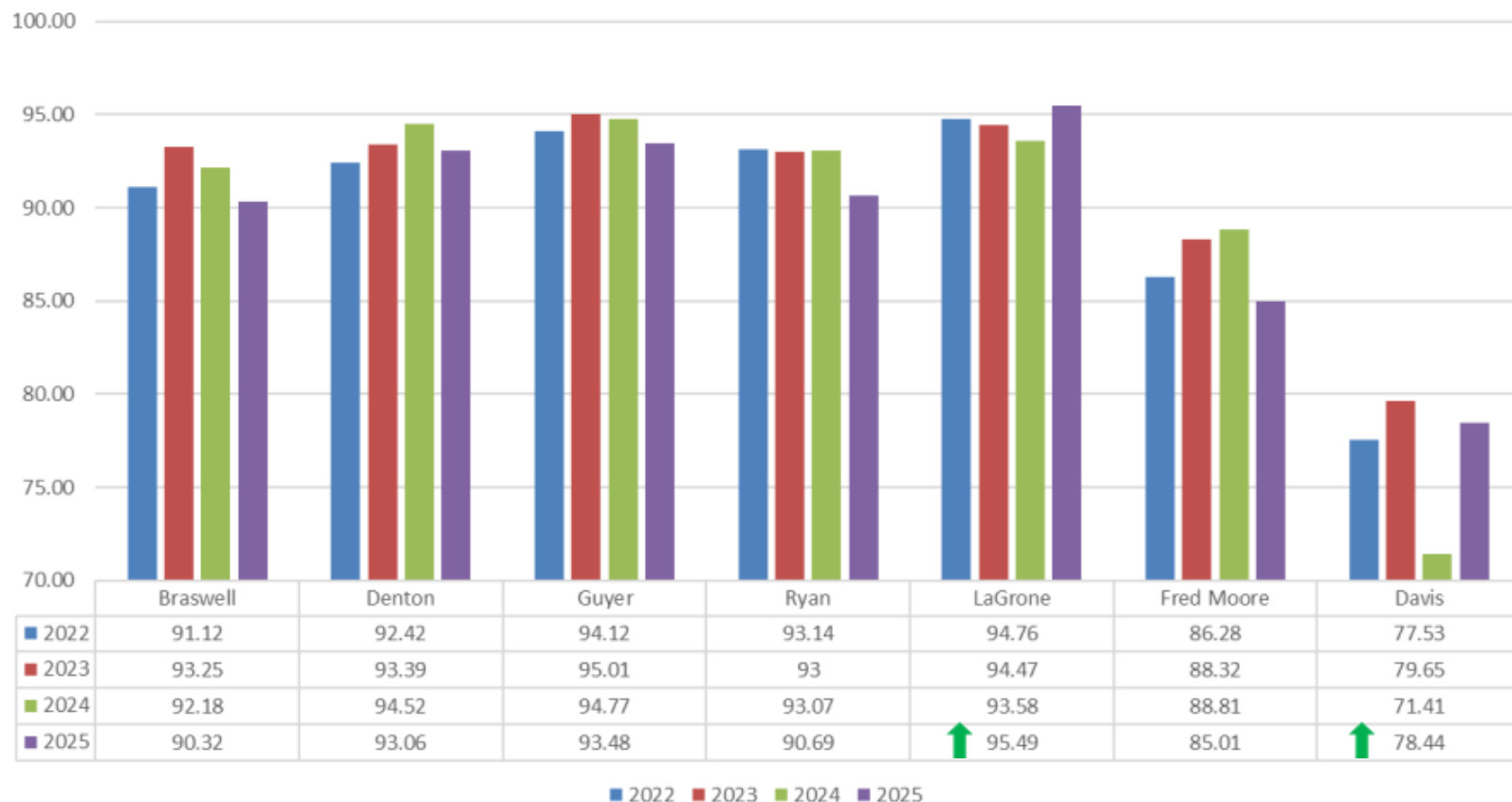
2022 2023 2024 2025

# Middle Schools RP 6



2022 2023 2024 2025

# High Schools RP 6



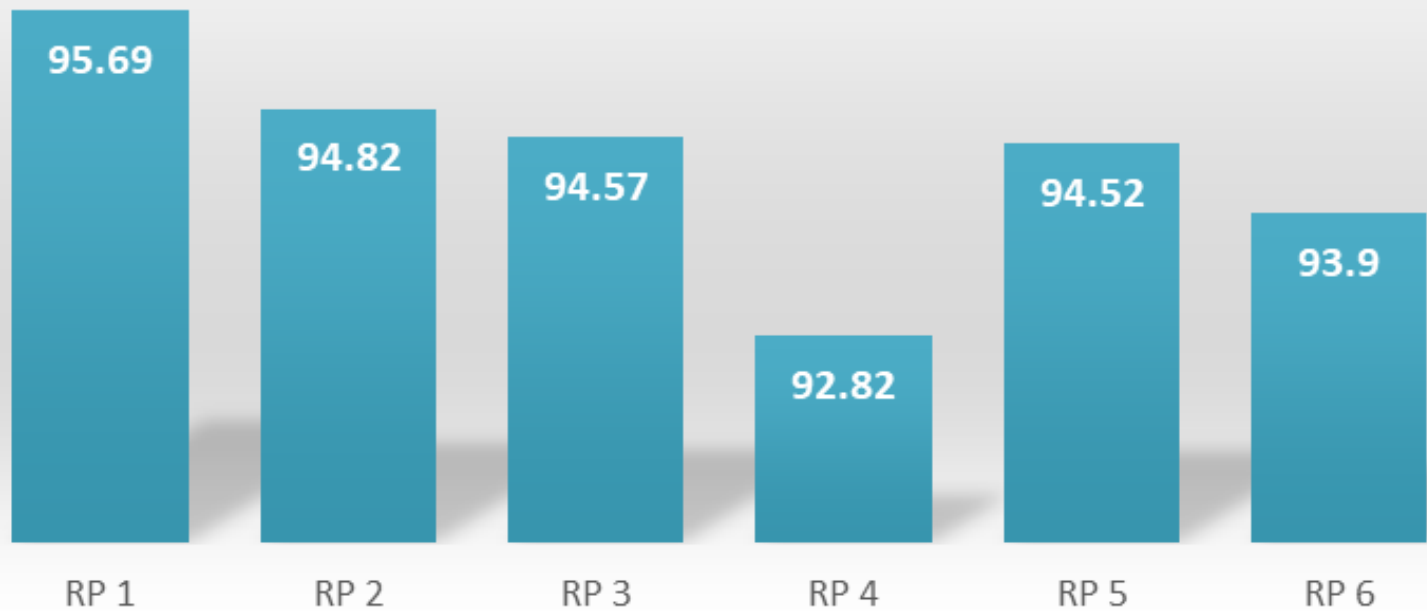


# End of Year Attendance Report

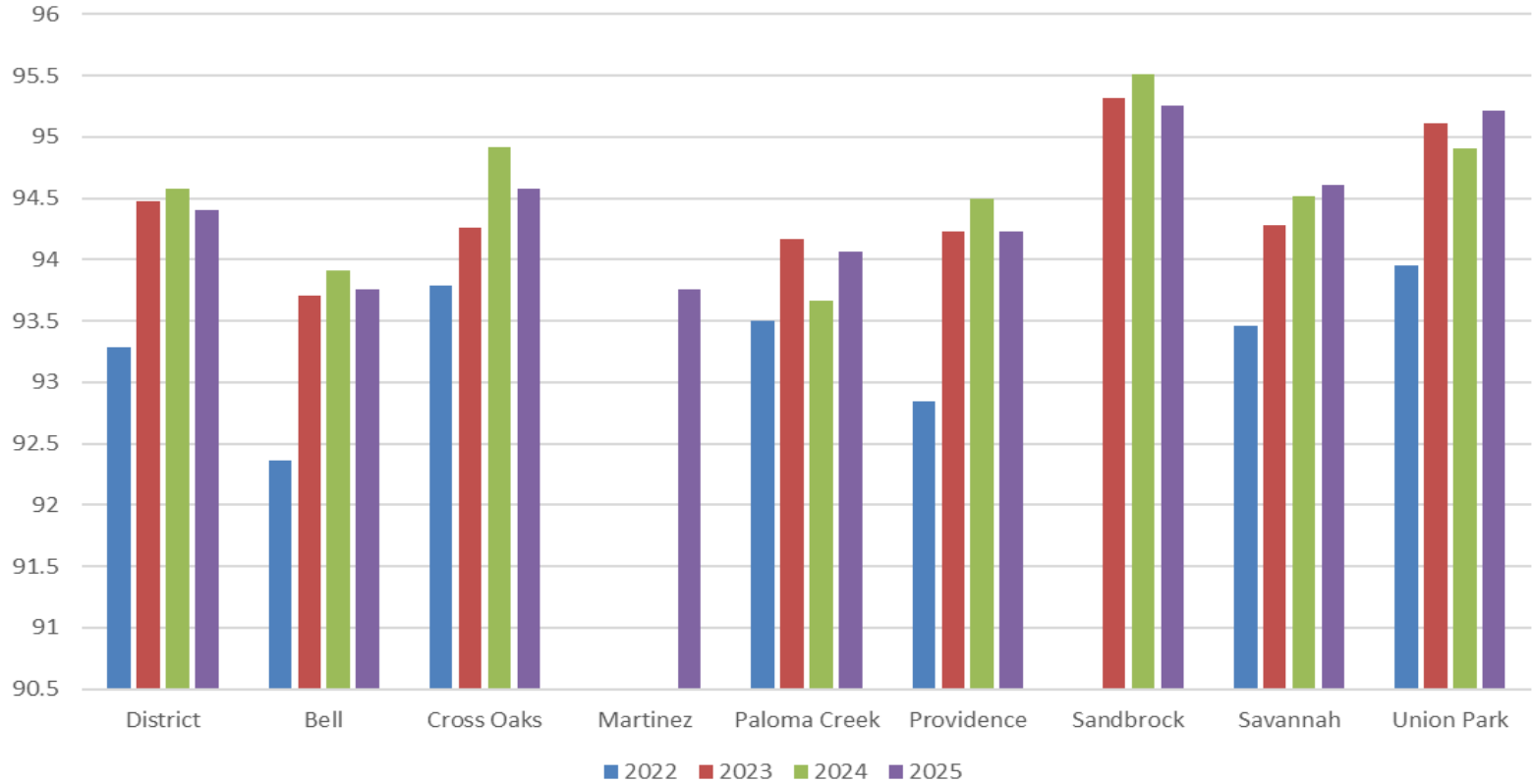
2024-2025



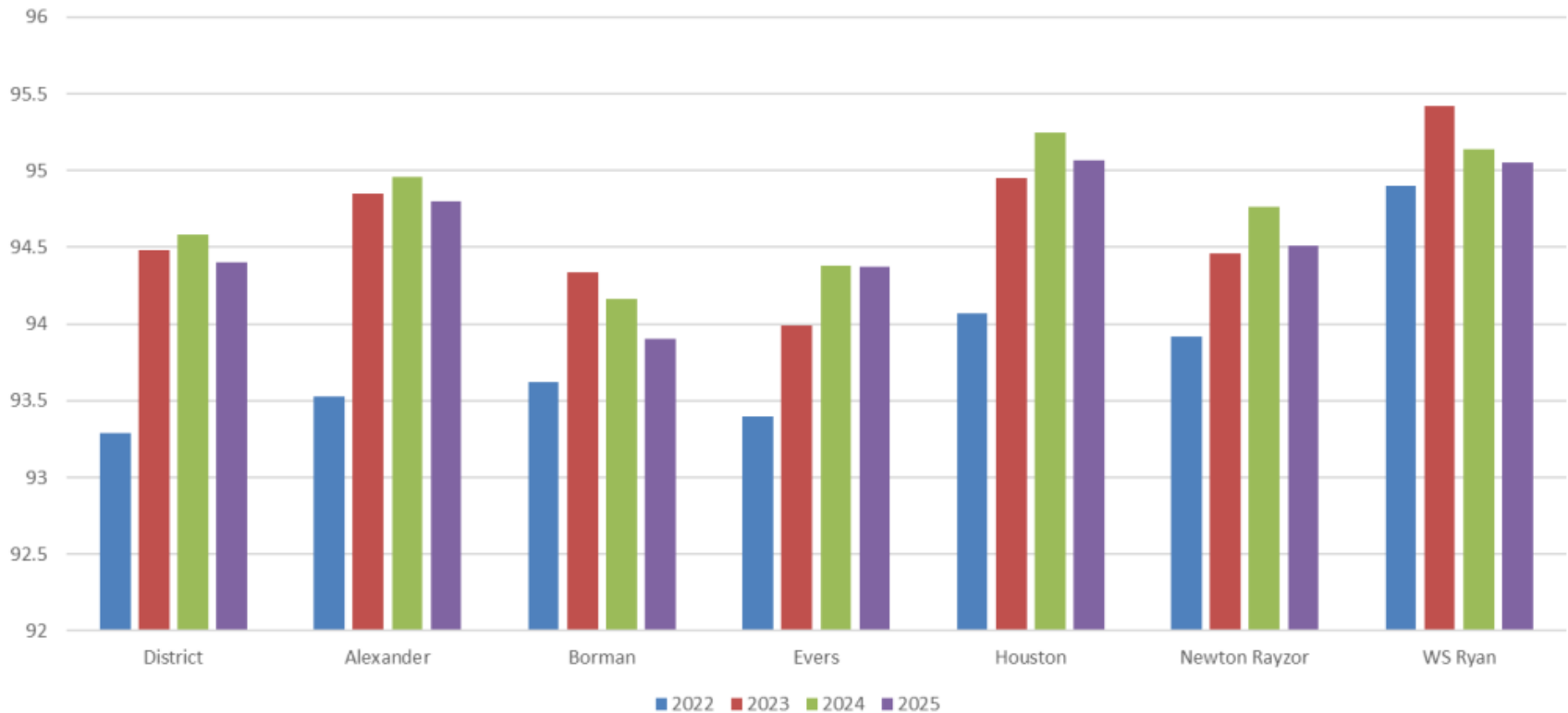
## ADA% by Reporting Period 2024-2025



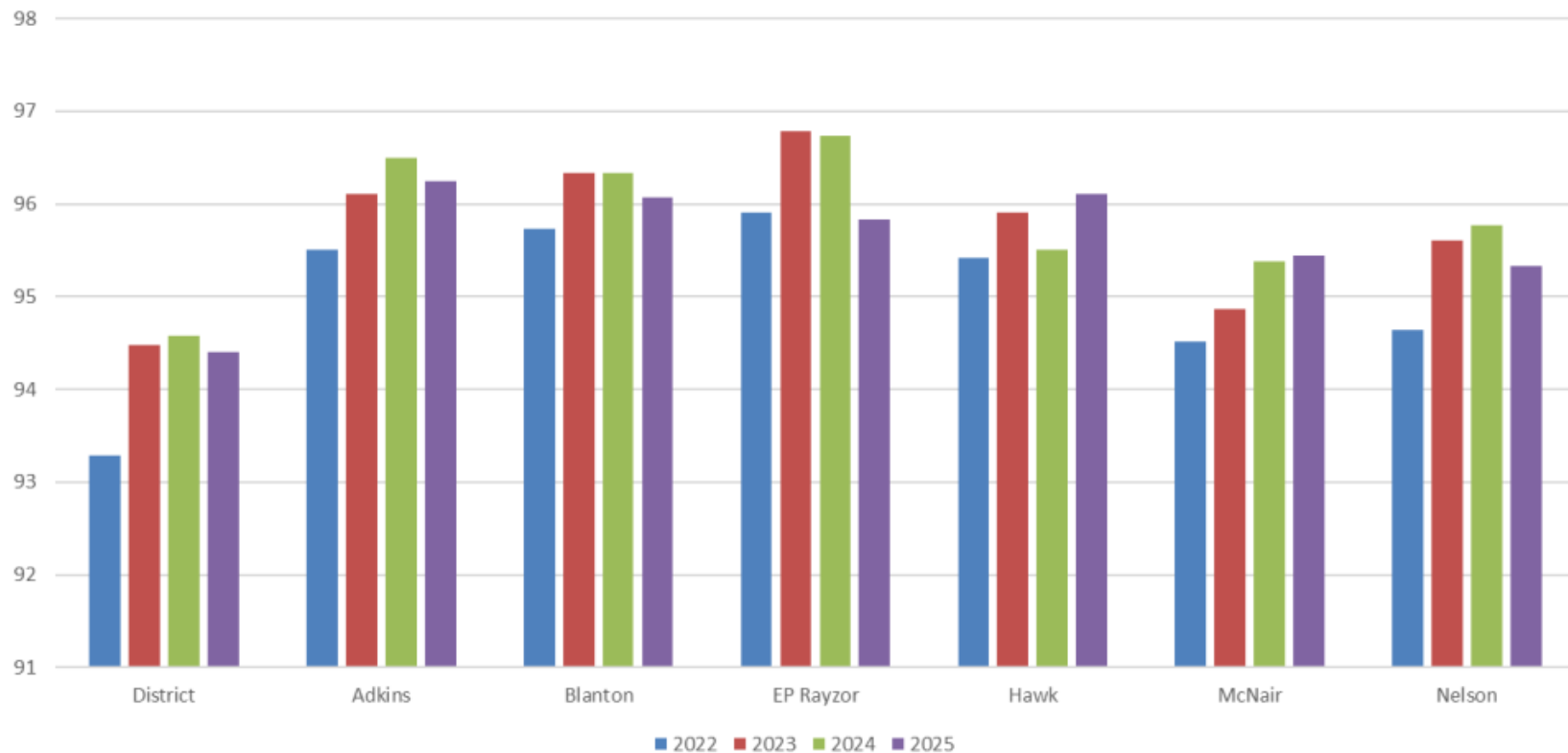
## Overall ADA% 4-Year Comparison Braswell Zone Elementary Schools



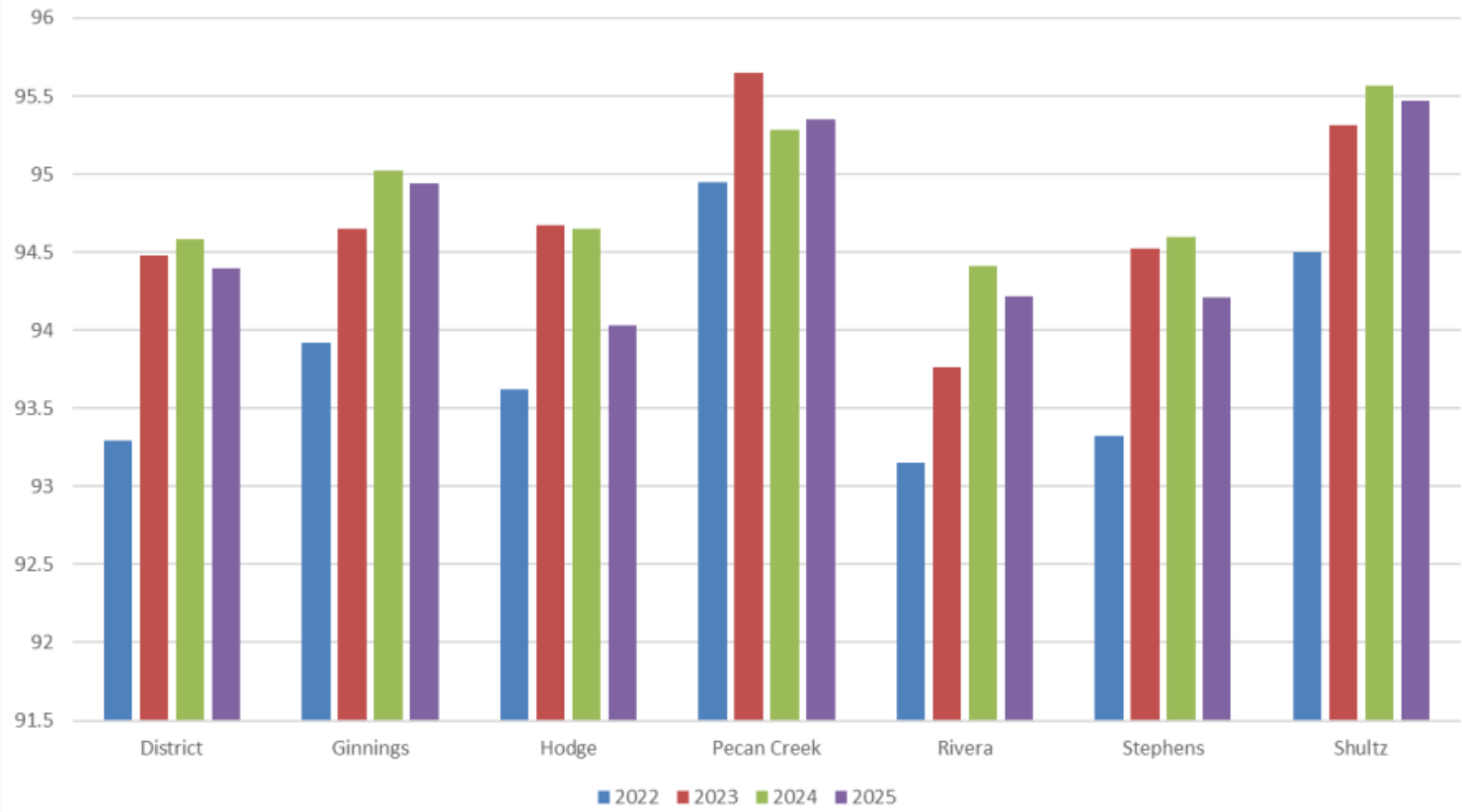
Overall ADA% 4-Year Comparison  
Denton Zone Elementary Schools



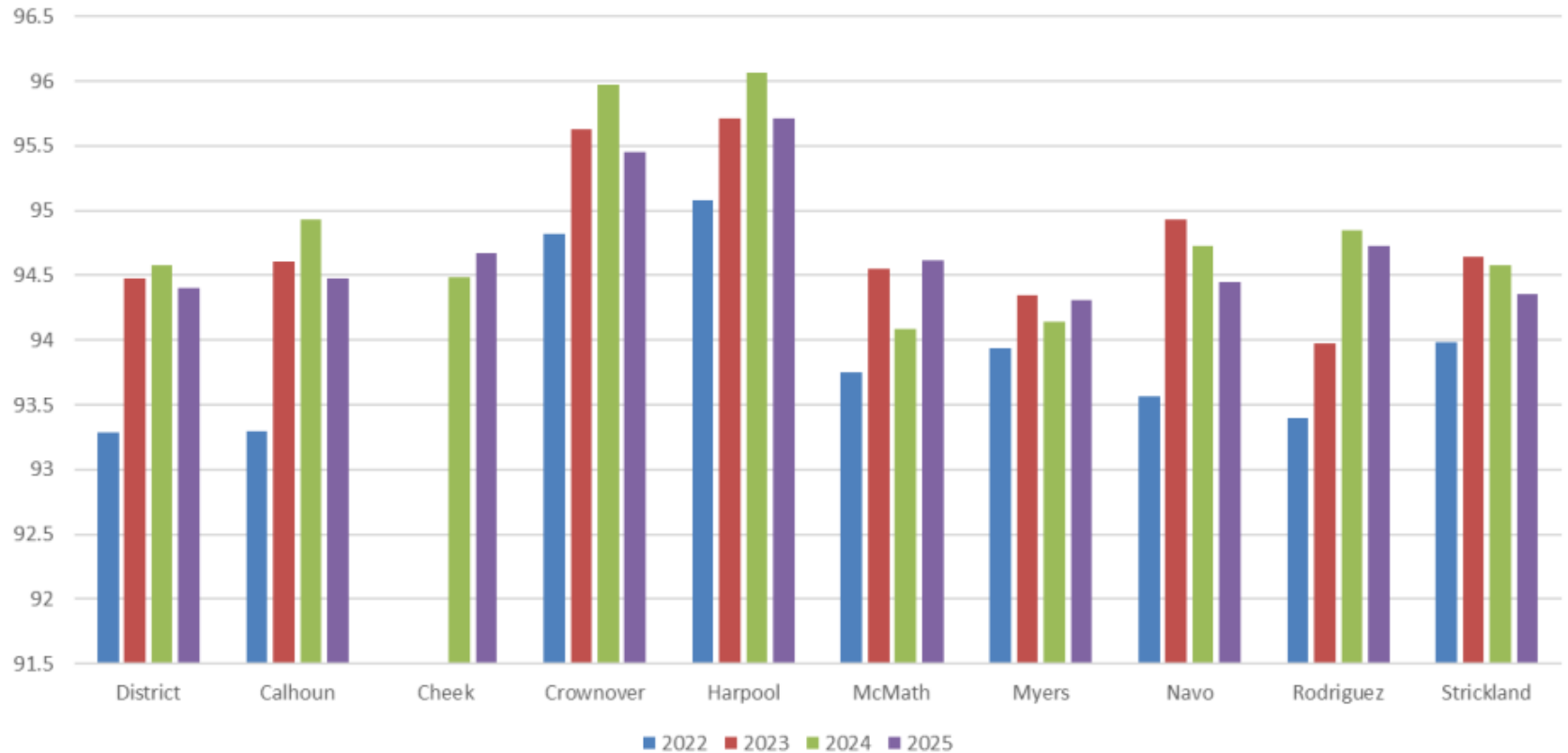
Overall ADA% 4-Year Comparison  
Guyer Zone Elementary Schools



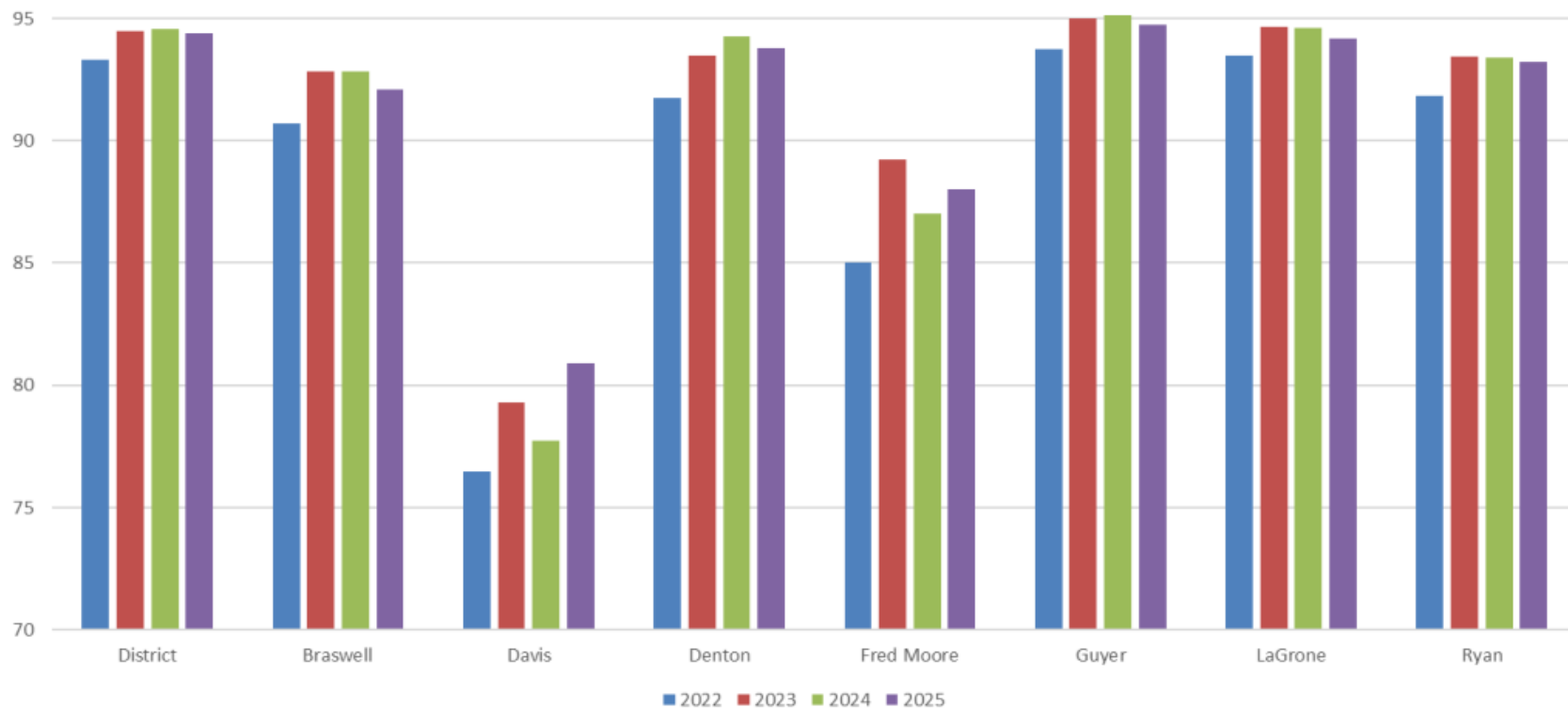
Overall ADA% 4-Year Comparison  
Ryan Zone Elementary Schools



## Overall ADA% 4-Year Comparison Middle Schools



## Overall ADA% 4-Year Comparison High Schools





4-Year Comparisons for District: All Reporting Periods

