

Declining Enrollment:
Under WI revenue limit formula:

**Reduces resources
faster than costs**

71% of districts are in declining enrollment
(55% in 2006-07)

75% of students are located in just 30% of districts

**Public school enrollment projected to decline
by over 10,000 students annually over the
next 5 years**

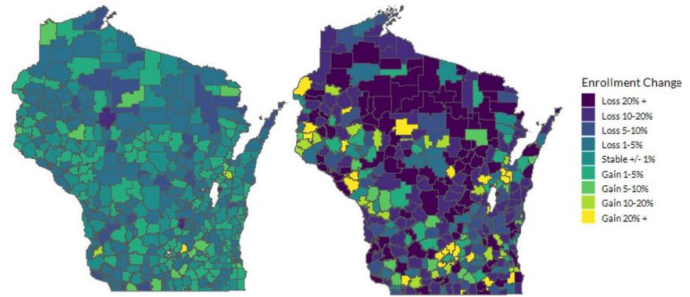


**Challenge: Explaining
districts resource needs
amid enrollment declines**

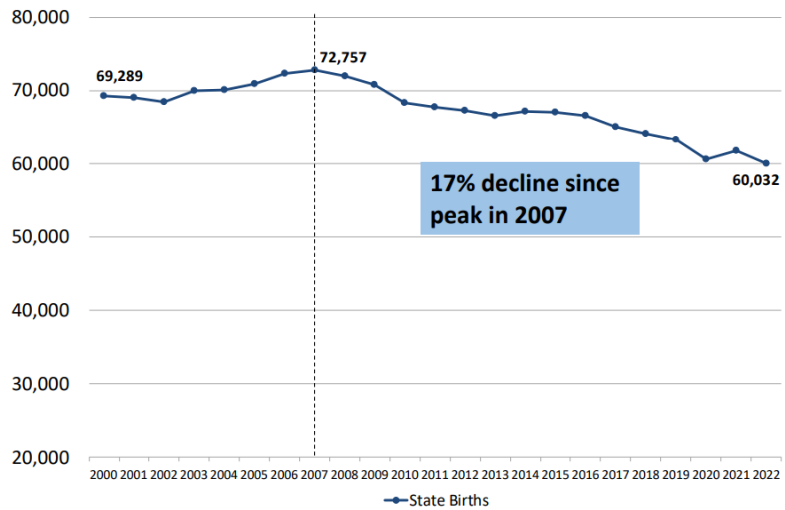
**Percentage change in enrollment
over previous year**

2006-07

2022-23

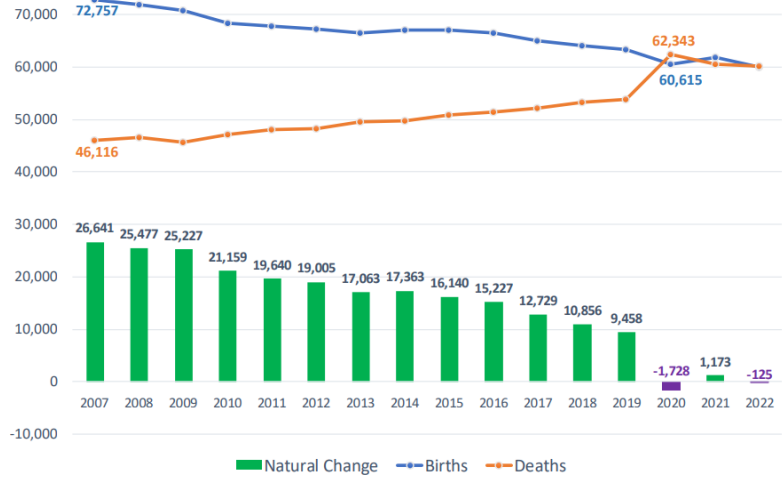


**Births
2000-2022**



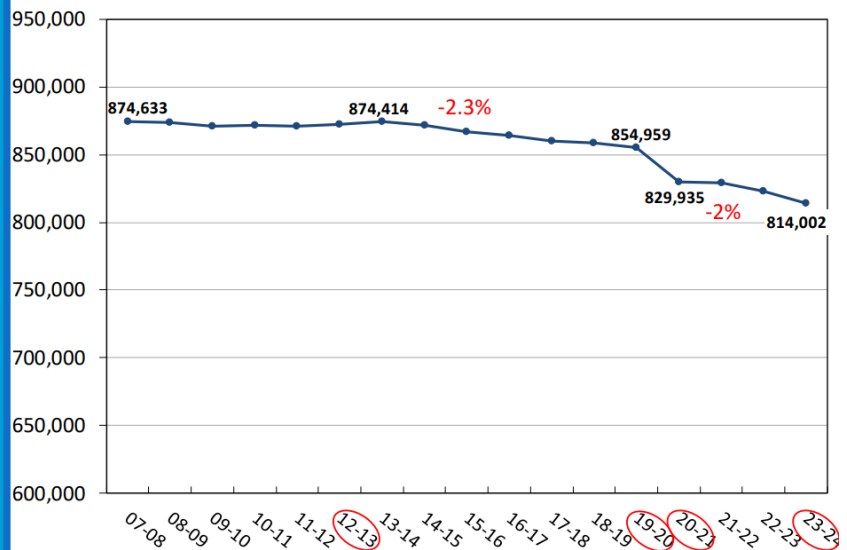
Source: Department of Health Services

Natural change 2007-2022



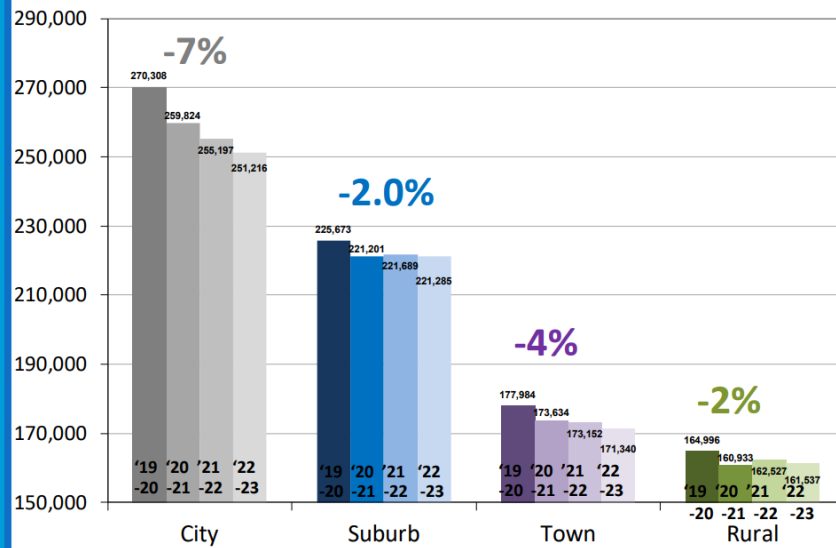
Source: Department of Health Services

Public school enrollment 2007-2023



Source: DPI (Third Friday count)

Enrollment by Location: 2019-20 to 2022-23



Sources: DPI and NCES

Public school enrollment projections: 2024-2033

Average projected enrollment decrease: **7% by 2028-29**

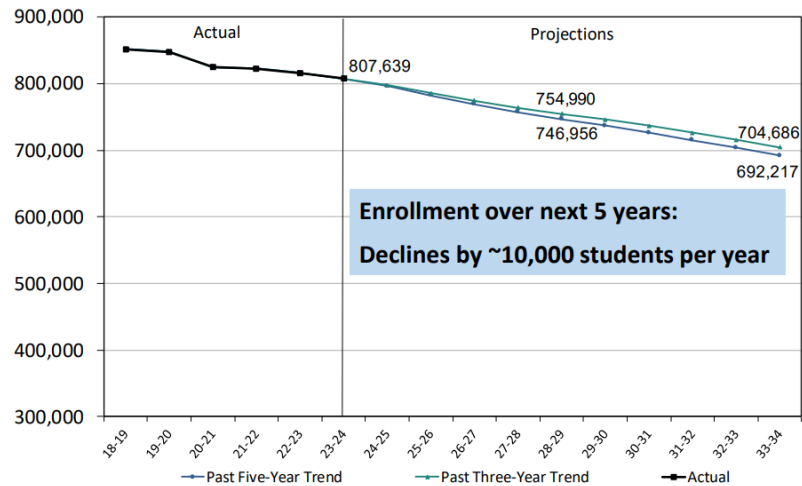
All grade groupings to decline:

K-5 by **8%**

6-8 by **4%**

9-12 by **7.6%**

Statewide 4K-12 Students



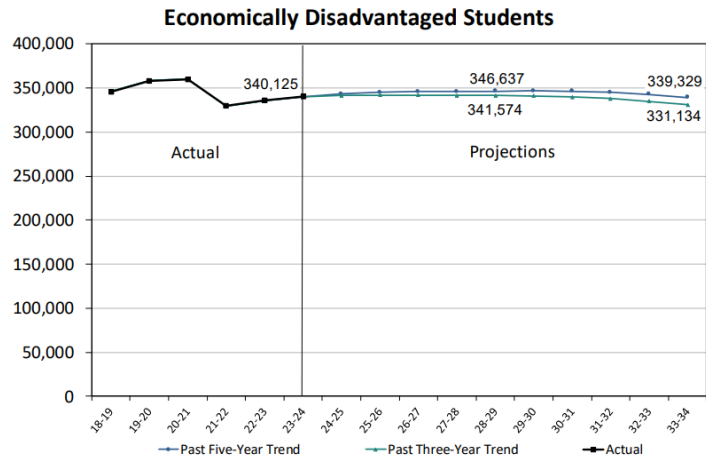
Enrollment over next 5 years:
Declines by ~10,000 students per year



Source: Kemp, Sara (2024) UW-Madison Applied Population Lab

Public school enrollment projections 2024-2033: Economically disadvantaged students

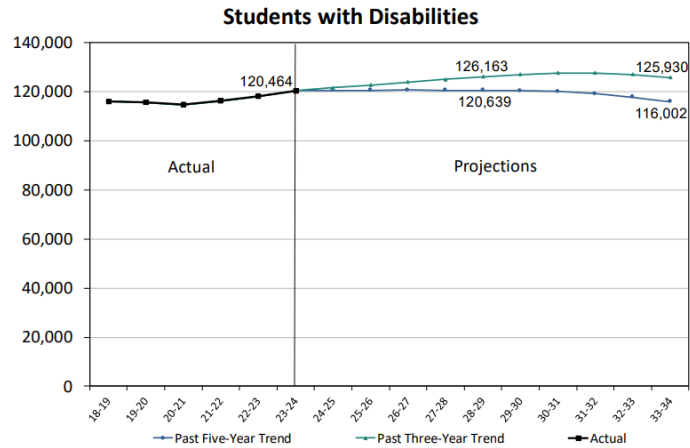
Average projected enrollment **increase:**
1.2% by 2028-29
Share: **+3.3 points** (42.1% to 45.4%)



Source: Kemp, Sara (2024) UW-Madison Applied Population Lab

Public school enrollment projections 2024-2033: Students with disabilities

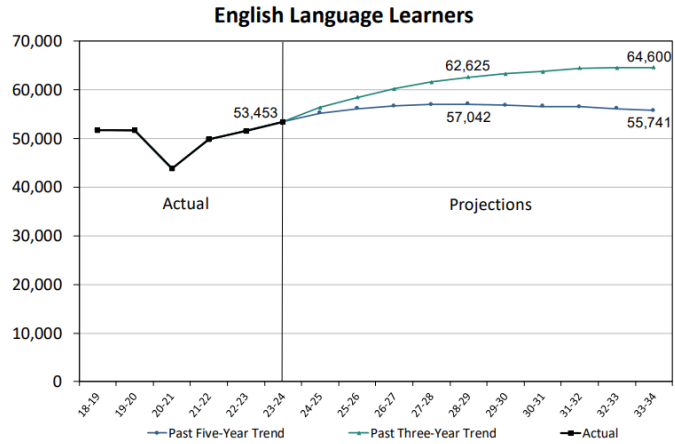
Average projected enrollment **increase:**
2.4% by 2028-29
Share: **+1.3 points** (14.9 to 16.2%)



Source: Kemp, Sara (2024) UW-Madison Applied Population Lab

Public school enrollment projections 2024-2033: English Learners

Average projected enrollment **increase**
12% by 2028-29
Share: +1.3 points (6.6% to 7.9%)



Will force hard questions about facilities and capital planning

Long-term enrollment losses raise challenging capital planning questions...



Should we repair/renovate existing school buildings?



Should we construct new buildings that better align future enrollment patterns?



Should we sell existing property?

State plays a pivotal role

This is a statewide and a state-level problem

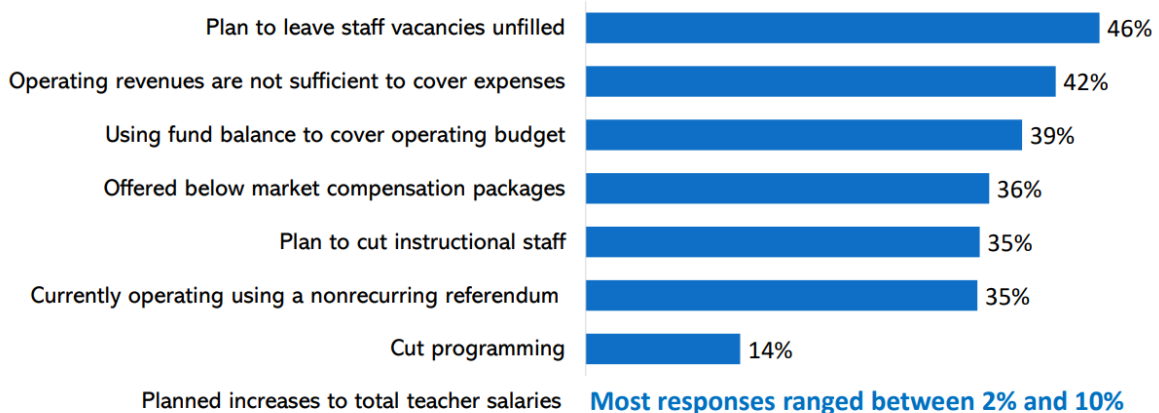
Districts cannot solve this problem alone

States have a role to play to ensure districts have resources to activate long term strategies that equitably mitigate harms to students and communities

What options does Wisconsin have?
What has been proposed in the past?
What have other states done?



Percent of respondents indicating they employed the following budget strategies for 2023-24



Source: WASBO December 2023 survey of superintendents and school business officials

Lakeland Conference High School Enrollment Self Reported

	23/24 enrollments	24/25 3rd Friday
Birchwood	70	
Northwood	79	
Winter	81	74
Holcombe	85	86
New Auburn	97	96
Cornell	108	100
Bruce	120	115
Turtle Lake	122	136
Frederic	124	120
Luck	125	102
Siren	125	113
Flambeau	147	129
Webster	184	187
Shell Lake	215	
Prairie Farm/CLAYTON	234	PF-127 C-87 214
Grantsburg	270	279