

June 2015

Derby Public Schools

Performance Dashboard

Derby Middle School

William Vitelli, Principal

“People without information cannot act. People with information cannot help but act.”

Ken Blanchard



Promotion:

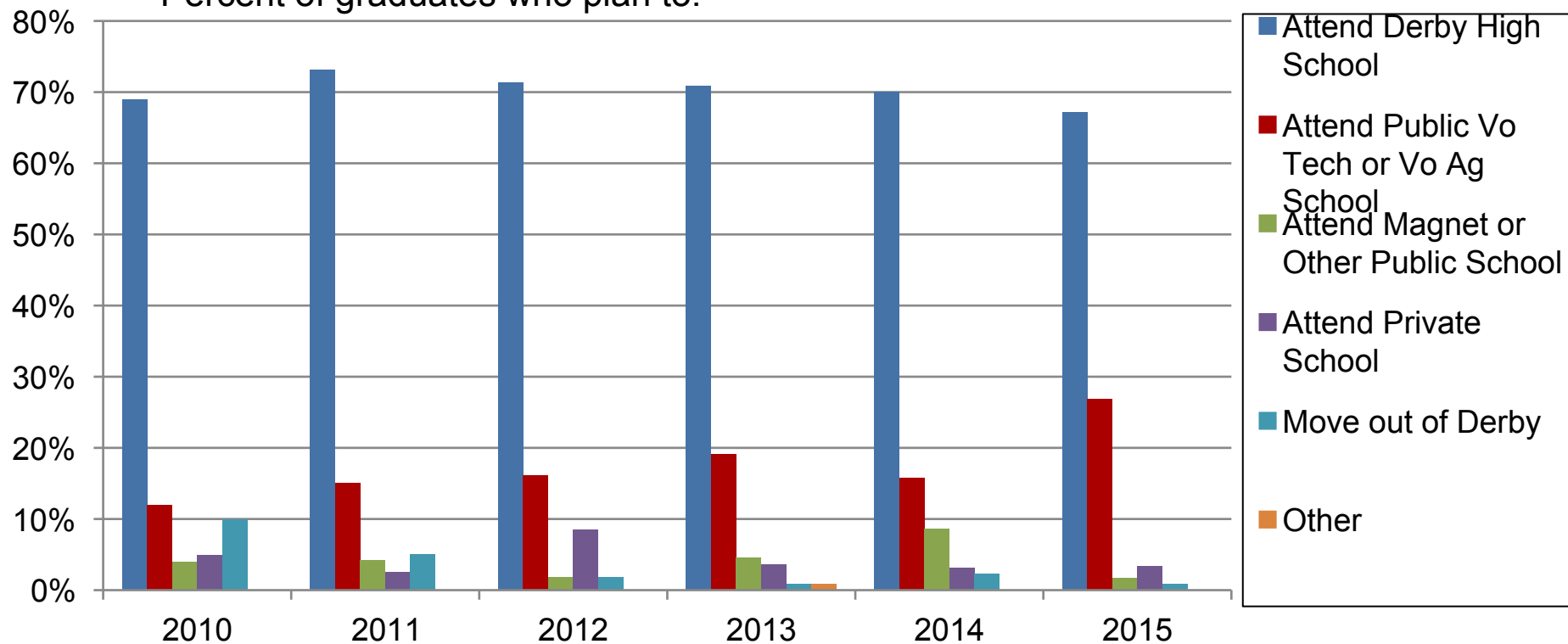
Percent of students promoted

Derby Middle School

	6	7	8
June, 2015	100%	100%	100%
June, 2014	100%	100%	100%
June, 2013	99%	99%	99%
June, 2012	100%	100%	100%
June, 2011	100%	100%	100%
June, 2010	100%	100%	100%

Post DMS Plans

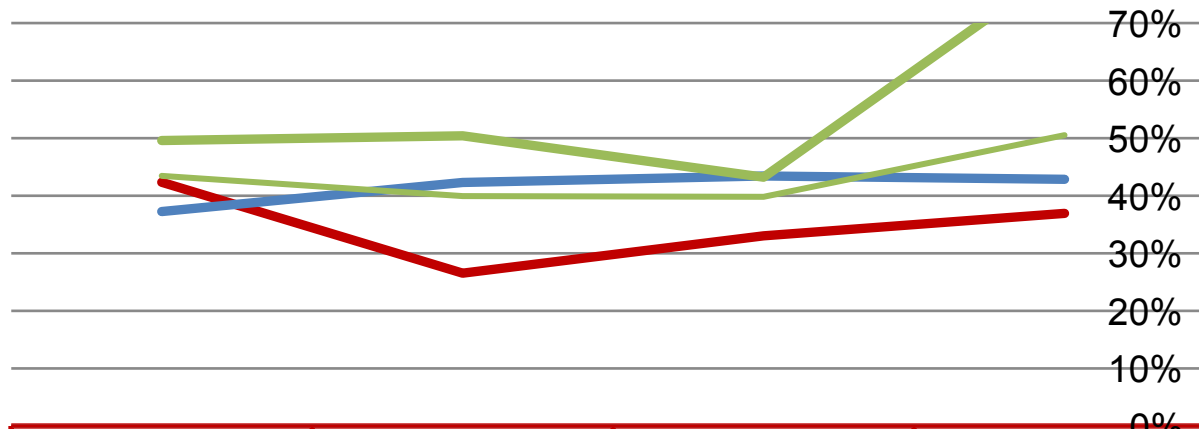
Percent of graduates who plan to:



Quarterly Data

High Grades

Percent of students earning 80 or above in all courses and no unsatisfactory mark in citizenship:

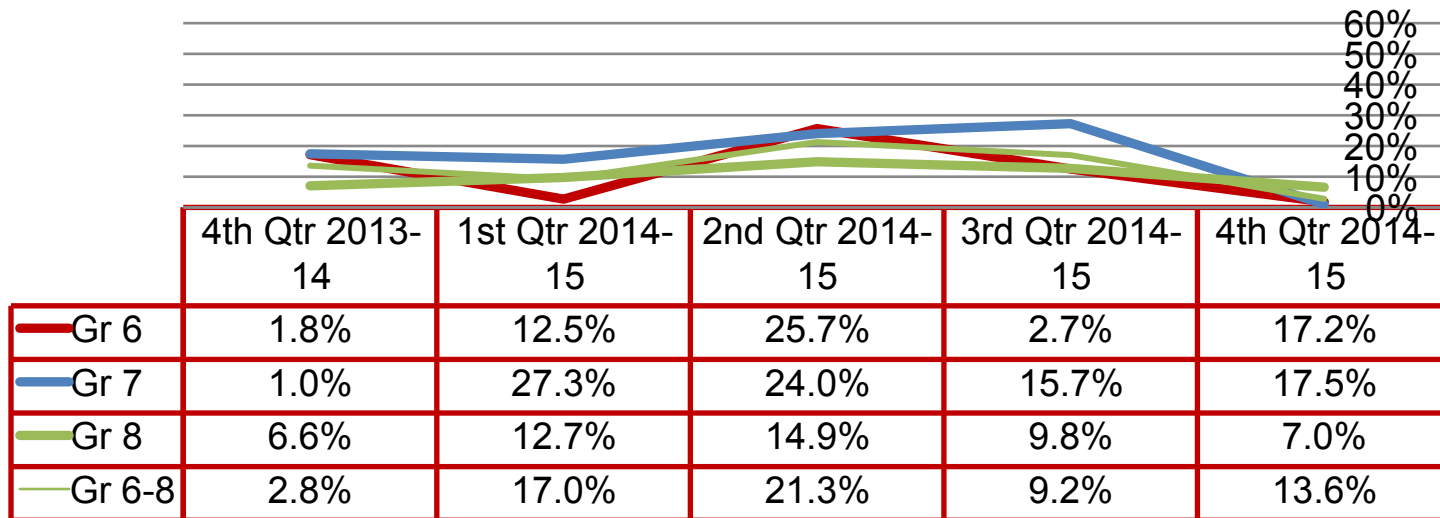


	1st Qtr 2014-15	2nd Qtr 2014-15	3rd Qtr 2014-15	4th Qtr 2014-15
Gr 6	36.9%	33.0%	26.5%	42.3%
Gr 7	42.9%	43.4%	42.3%	37.3%
Gr 8	80.3%	43.2%	50.4%	49.6%
Gr 6-8	50.5%	39.8%	39.9%	43.5%

Failing Grades

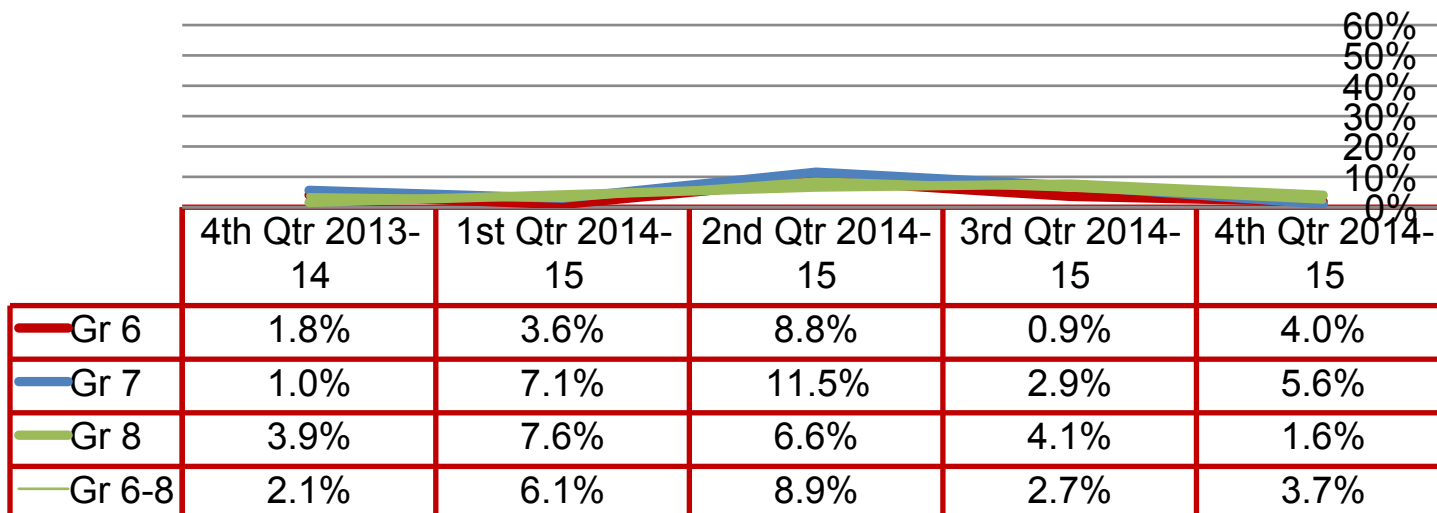
Derby Middle School

Percent of students with at least one course below 60%:



Failing Grades

Percent of students with at least two courses below 60%:



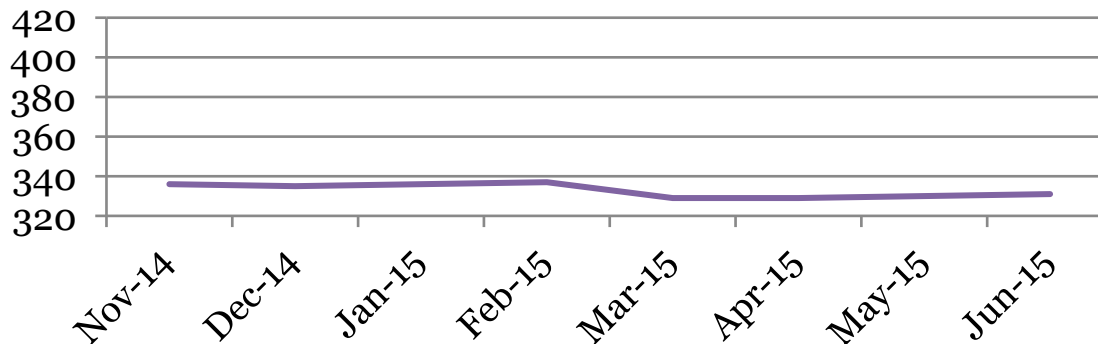
Monthly Data

Derby Middle School

Enrollment – 1st of the month

	6	7	8	Total
Jun-15	113	99	119	331
May-15	112	99	119	330
Apr-15	112	99	118	329
Mar-15	111	100	118	329
Feb-15	113	103	121	337
Jan-15	112	103	121	336
Dec-14	112	103	120	335
Nov-14	111	102	123	336
Jun-14	100	126	129	355

Total School Enrollment

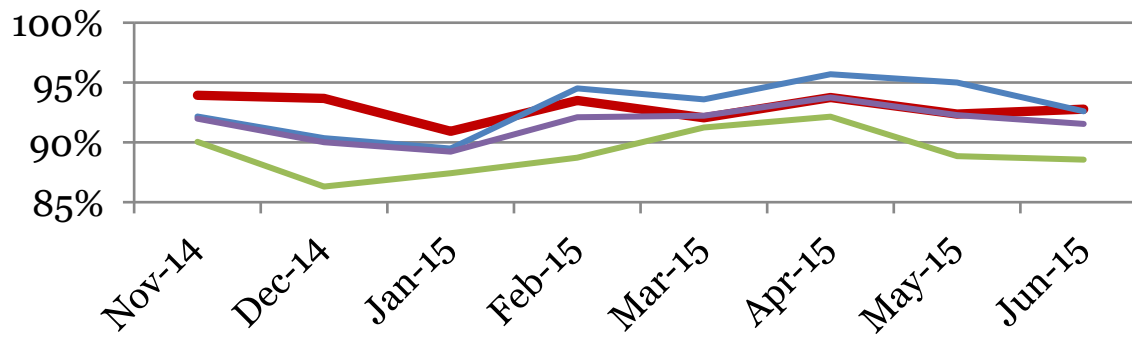


Attendance – Students

Average daily percent present:

	6	7	8	Total
Jun-15	93	93	89	92
May-15	92	95	89	92
Apr-15	94	96	92	94
Mar-15	92	94	91	92
Feb-15	93	95	89	92
Jan-15	91	89	87	89
Dec-14	94	90	86	90
Nov-14	94	92	90	92
Jun-14	92	93	87	91

Total Student Attendance



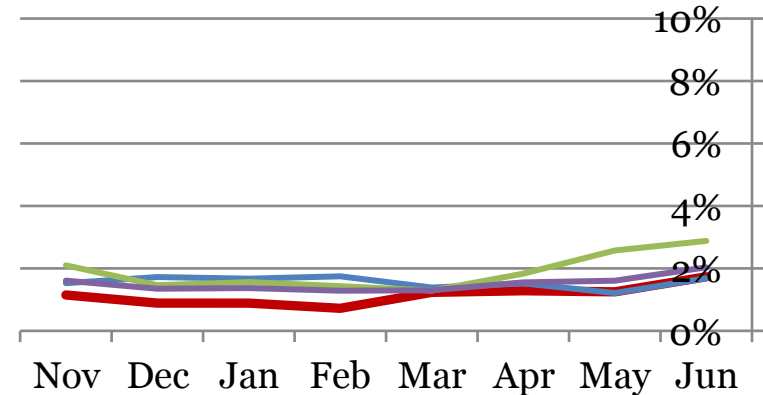
Tardies

Average daily percent tardy:

	6	7	8	Total
Jun-15	2	2	3	2
May-15	1	1	3	2
Apr-15	1	2	2	2
Mar-15	1	1	1	1
Feb-15	1	2	1	1
Jan-15	1	2	2	1
Dec-14	1	2	1	1
Nov-14	1	2	2	2
Jun-14	2	2	2	2

Derby Middle School

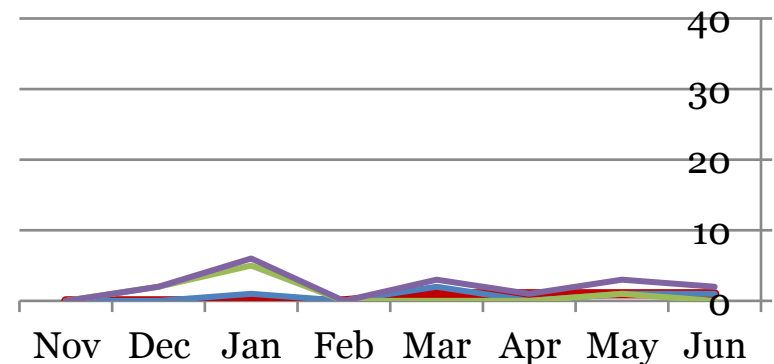
Total Student Tardies



Number of students tardy 5 or more days:

	6	7	8	Total
Jun-15	1	1	0	2
May-15	1	1	1	3
Apr-15	1	0	0	1
Mar-15	1	2	0	3
Feb-15	0	0	0	0
Jan-15	0	1	5	6
Dec-14	0	0	2	2
Nov-14	0	0	0	0
Jun-14	3	4	2	9

Students over Threshold

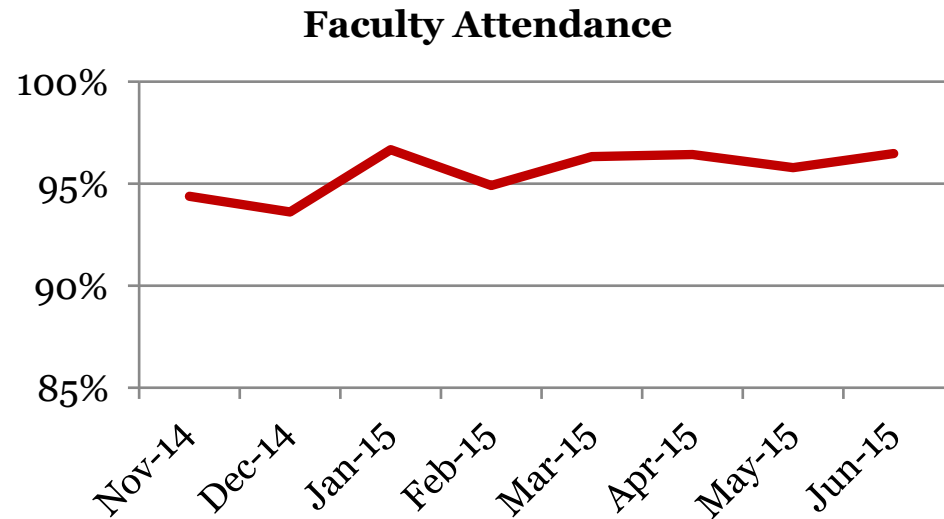


Attendance – Faculty

Average daily percent present:

	Total
Jun-15	96
May-15	96
Apr-15	96
Mar-15	96
Feb-15	95
Jan-15	97
Dec-14	94
Nov-14	94
Jun-14	91

Derby Middle School



**This indicator reflects certified staff and does not include absences created by class trips, professional development, workman's comp and FMLA. However % may be reduced due to long term illness beyond FMLA.*

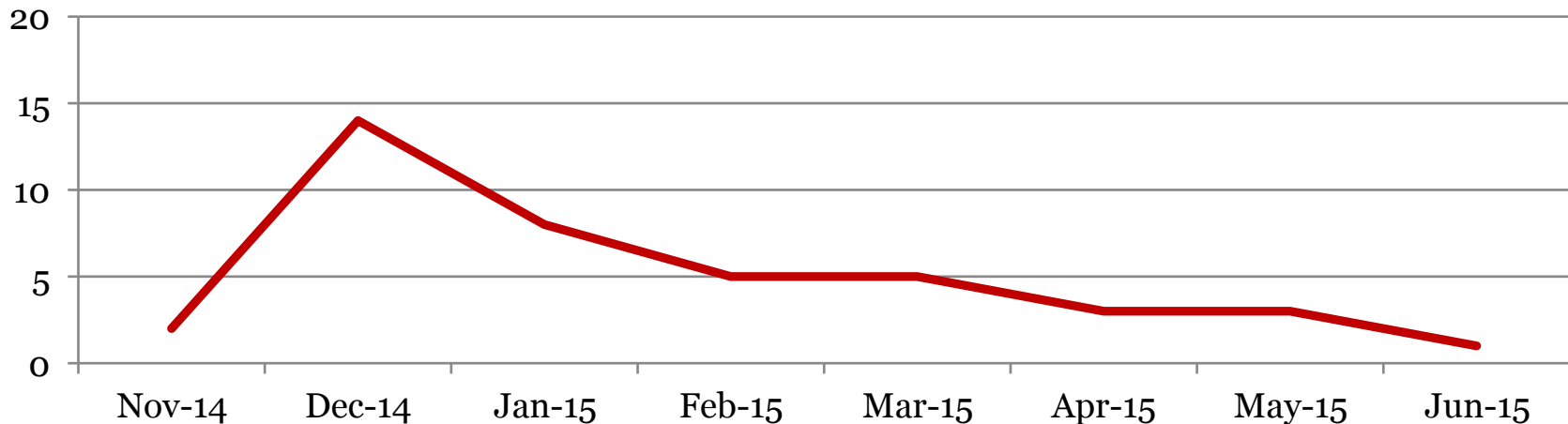
Suspensions – Out of School

Derby Middle School

Number of student suspensions (total days of suspension):

	6		7		8		Total	
Jun-15	1	2	0	0	0	0	1	2
May-15	0	0	3	3	0	0	3	3
Apr-15	1	(3)	2	(4)	0	(0)	3	(7)
Mar-15	4	(11)	1	(4)	0	(0)	5	(15)
Feb-15	2	(4)	2	(4)	1	(5)	5	(13)
Jan-15	4	(23)	1	(3)	3	(13)	8	(39)
Dec-14	7	(42)	5	(18)	2	(8)	14	(68)
Nov-14	0	(0)	1	(3)	1	(10)	2	(13)
Jun-14	3	7	6	18	2	13	11	38

Total Out of School Suspensions



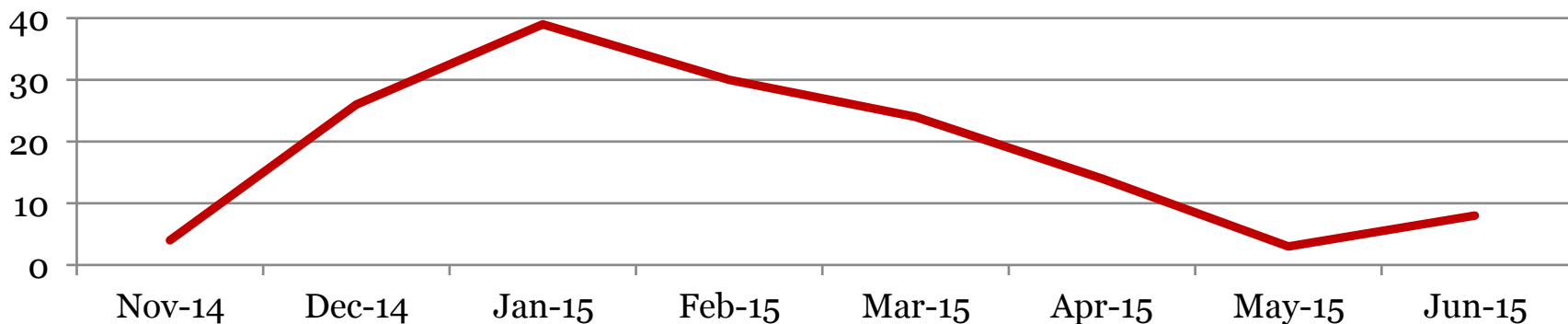
Suspensions – In School

Derby Middle School

Number of student suspensions (total days of suspension):

	6		7		8		Total	
Jun-15	4	4	1	1	3	5	8	10
May-15	0	0	3	3	0	0	3	3
Apr-15	6	(5.25)	6	(6)	2	(2)	14	(13.25)
Mar-15	7	(9)	11	(14)	6	(6)	24	(28)
Feb-15	14	(15)	10	(11)	6	(7)	30	(33)
Jan-15	14	(23)	13	(15)	12	(12)	39	(50)
Dec-14	7	(7)	12	(13.5)	7	(12)	26	(32.5)
Nov-14	2	(2)	1	(2)	1	(2)	4	(6)
Jun-14	5	11	0	0	4	6	9	17

Total In School Suspensions



Newly Enrolled Students

	6	7	8	Total
Summer-15	0	0	0	0
Jun-15	1	0	0	1
May-15	0	0	0	0
Apr-15	1	1	3	5
Mar-15	1	0	1	2
Feb-15	1	1	0	2
Jan-15	1	2	0	3
Dec-14	1	1	1	3
Nov-14	1	1	0	2
Summer-14	13	10	7	30
Jun-14	0	0	0	0

Departing Students

Students who have left the school during the month for any reason:

	6	7	8	Total
Summer-15	1	1	39	41
Jun-15	1	0	0	1
May-15	0	0	0	0
Apr-15	1	0	1	2
Mar-15	0	0	1	1
Feb-15	3	4	3	10
Jan-15	0	2	0	2
Dec-14	1	1	1	3
Nov-14	0	0	2	2
Summer-14	7	2	47	56
Jun-14	0	0	1	1