

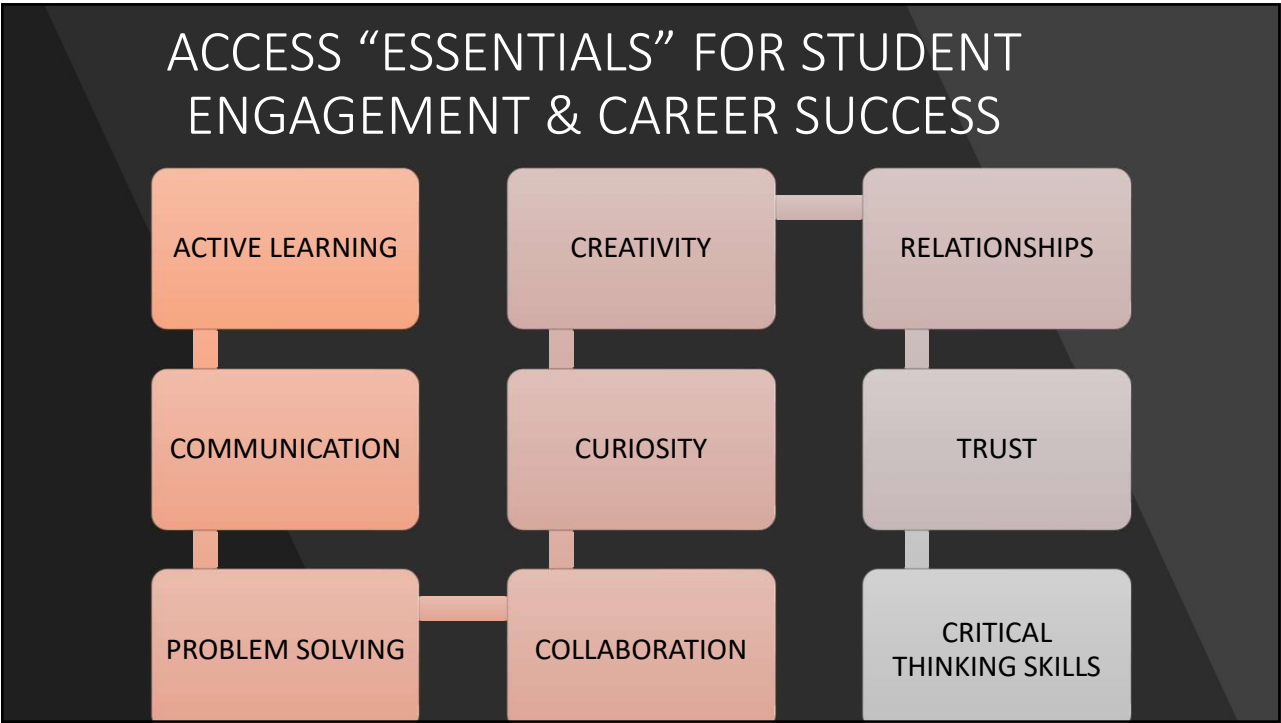
ACCESS

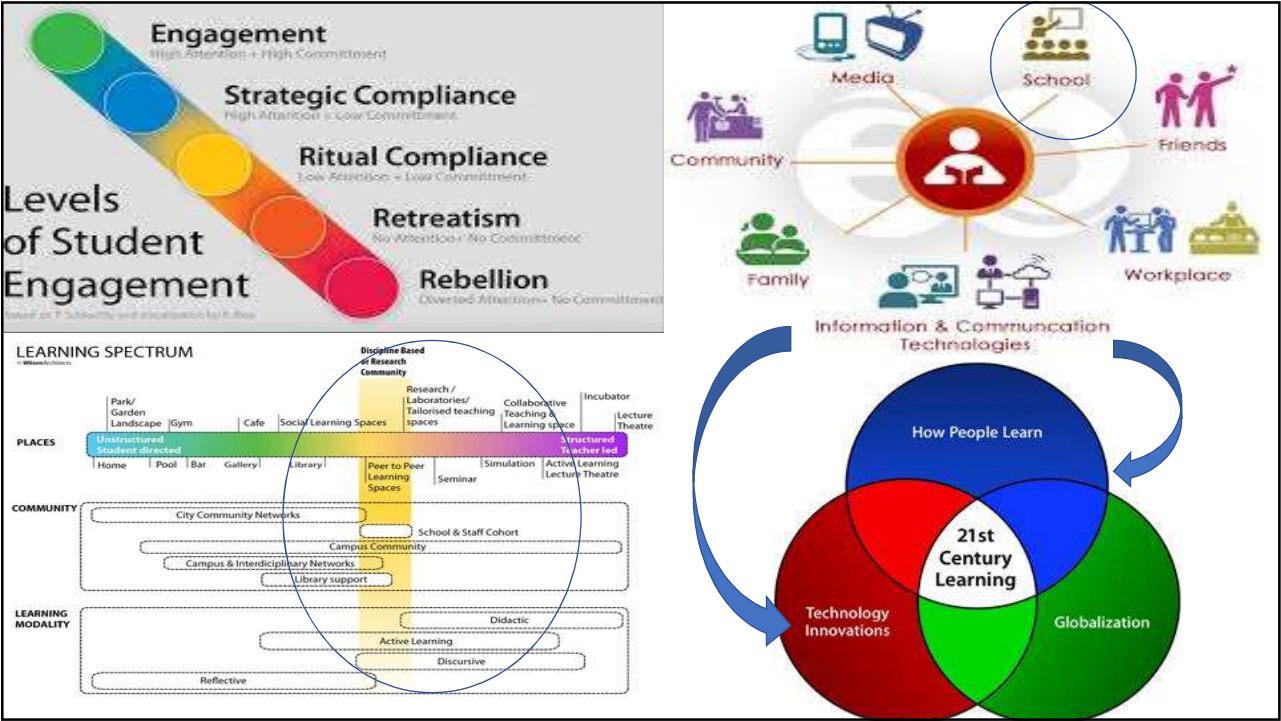
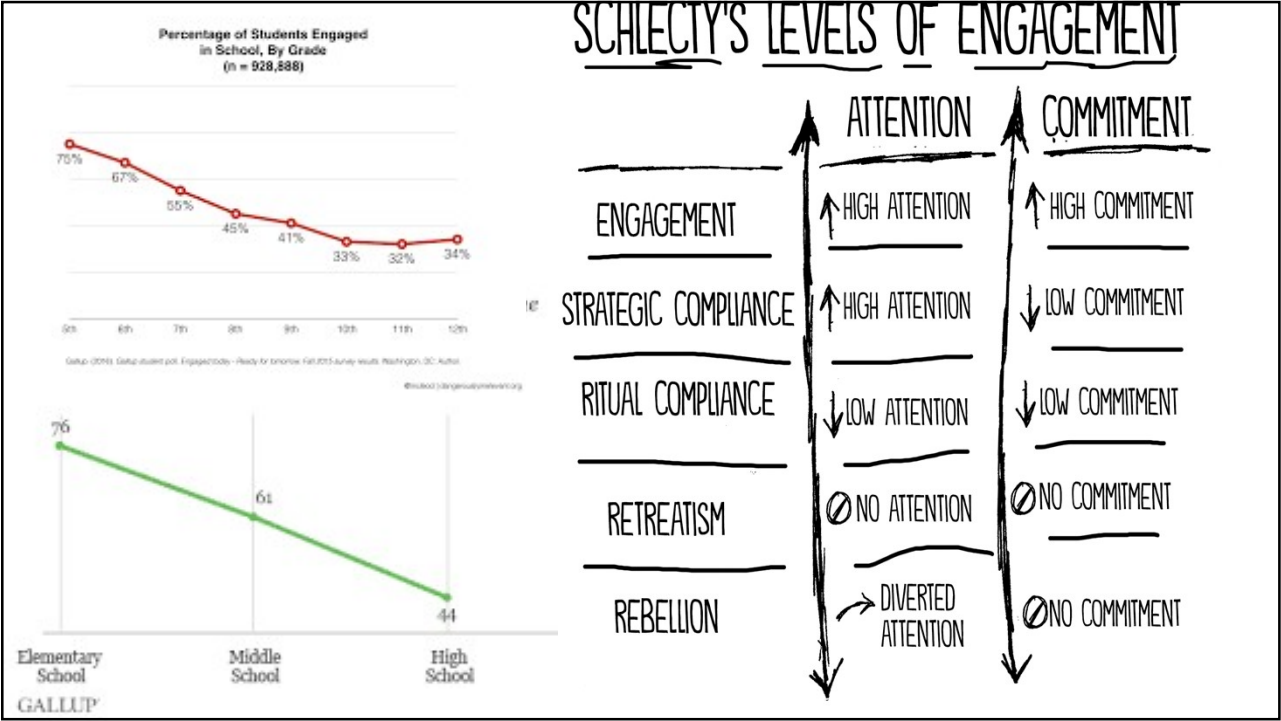
AVATAR CENTER for COMMUNICATION, ENGAGEMENT & STUDENT SUCCESS
Career Connected Students @ Smart Schools

MISSION TO TRANSFORM ECISD TO BE A 'SMART SCHOOL'



Avatar Connected Communities
Powering Collaboration

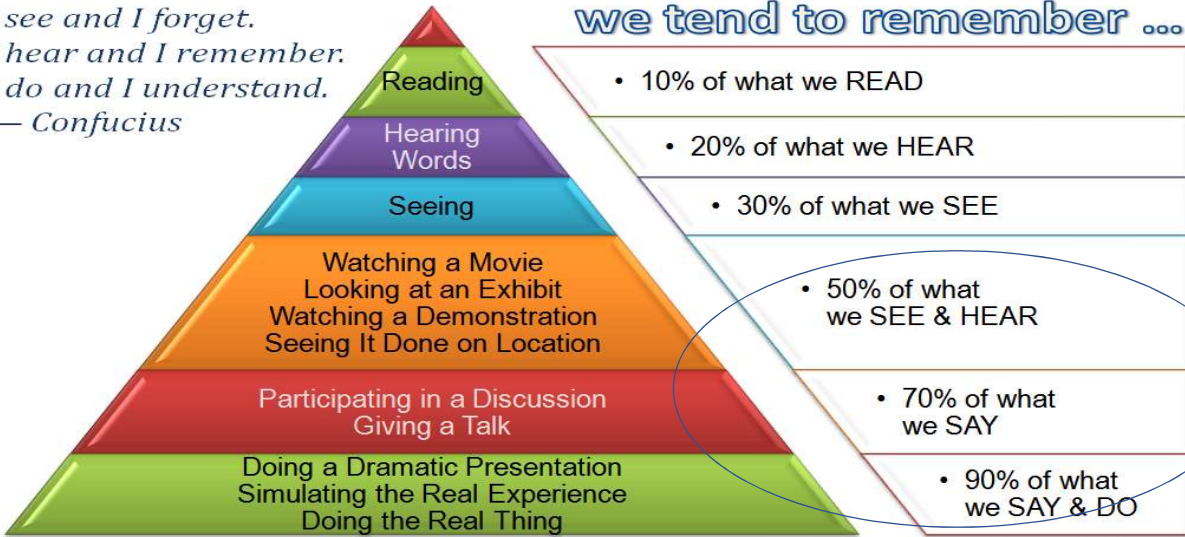




The Cone of Learning

sparkinsight.com

*I see and I forget.
I hear and I remember.
I do and I understand.*
— Confucius



Source: Edgar Dale (1969)

P
a
s
s
i
v
e

A
c
t
i
v
e

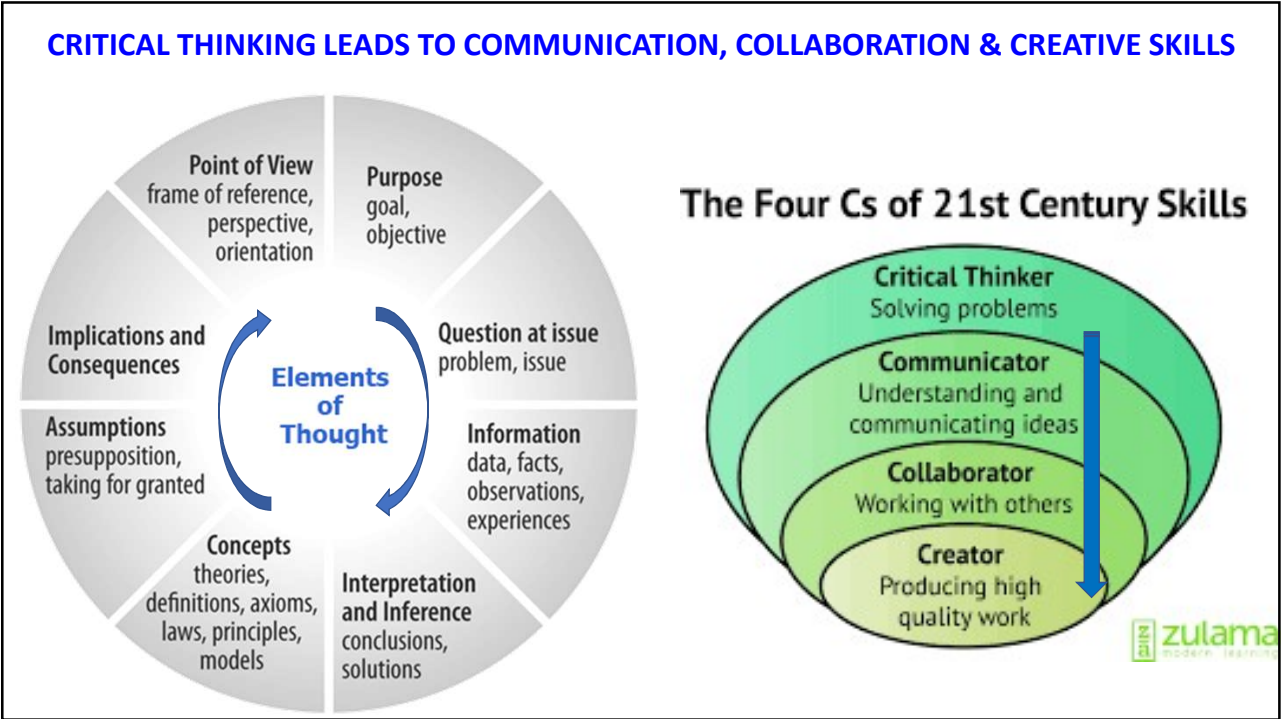
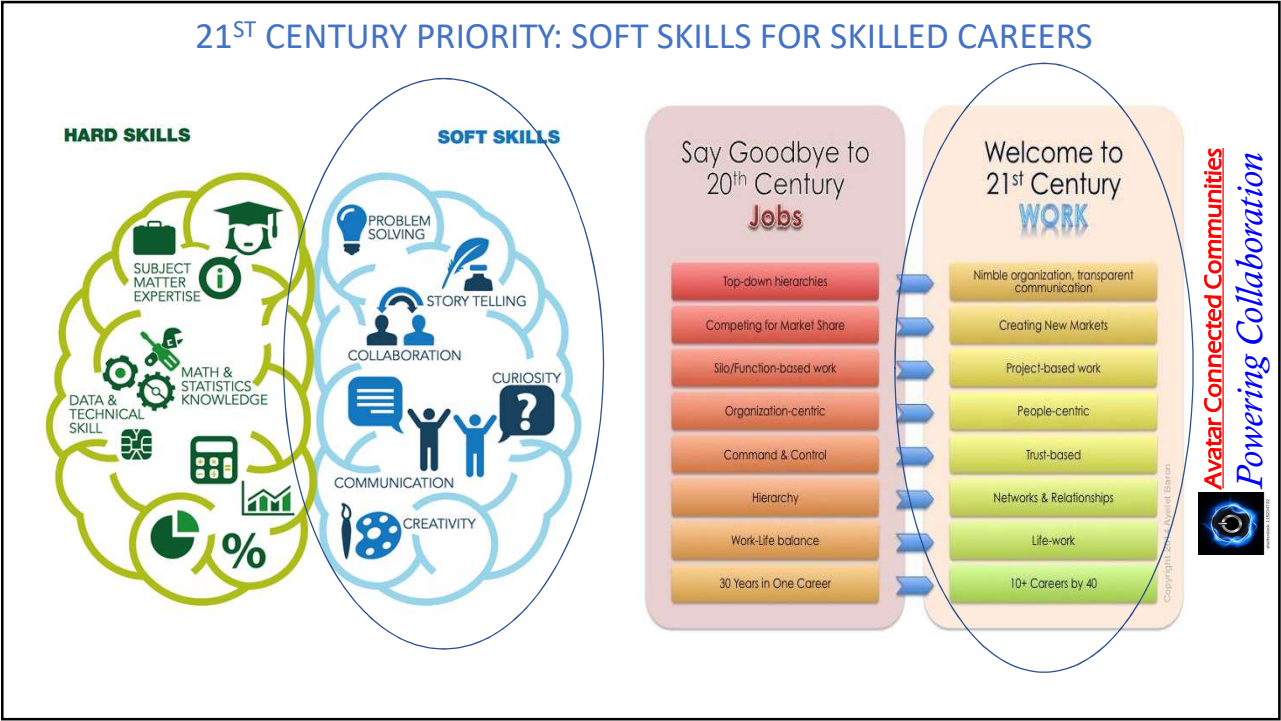
Conversational Intelligence™ Matrix

	LEVEL I TRANSACTIONAL "Exchange Information"	LEVEL II POSITIONAL "Exchange Power"	LEVEL III TRANSFORMATIONAL "Exchange Energy"
What Do We Exchange?	TELL → ASK	ADVOCATE → INQUIRE	SHARE → DISCOVER
Interaction Dynamics	Ask-Tell	Advocate-Inquire	Share-Discover
Space	Closes Spaces	Limits Space	Creates Space
Focus	Giving and taking information	Exploring others' positions seeking a win-win solution	Exploring others' perspectives; joining and transforming reality; innovating
Blindspots & Overuse	"Tell-Sell-Yell Syndrome" Tendency toward telling more than asking	"Addicted to Being Right" Tendency to ask questions for which you have all the answers	"All Talk No Action" Tendency for too much talk and no action
INTENTION	INFORM	PERSUADE	CO-CREATE
Listen	To protect	To accept or reject	To connect
I-WE	I-centric	I & We-centric	WE-centric
Success	My success	Win at all cost	Mutual success
Trust	Low trust	Conditional trust	High trust
Influence	Not open to influence	Desire to influence	Open to influence
Skills to Develop	Ability to ask open ended questions and foster 'give and take'	Ability to share the conversational space with others; expand power	Ability to ask questions for which you have no answers; co-creating

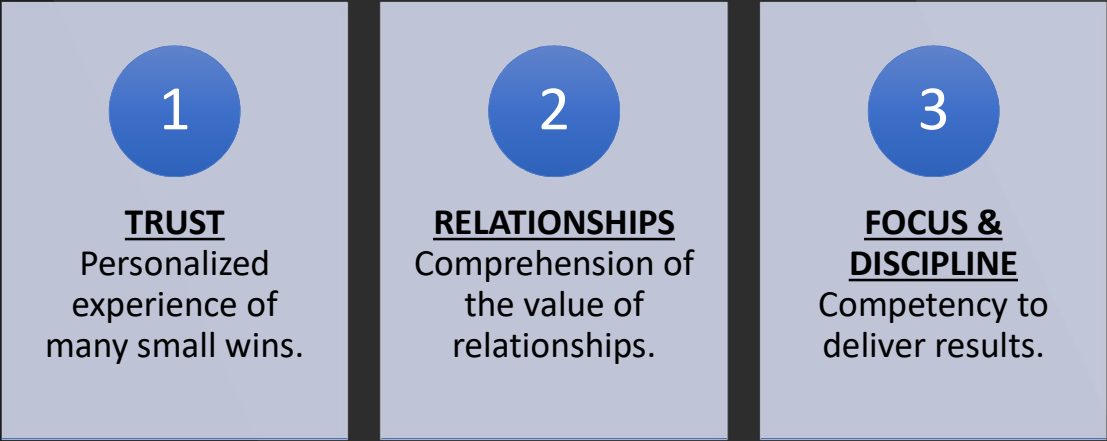
Transactional - Positional - Transformational
Conversations & Collaborations: A 21st Century Requirement

© Benchmark Communications, Inc./The Creating WE Institute










“Collaboration” – Essential 21st Century Skill



ACCESS PROGRAM STRATEGY: ALIGN & IMPACT









TEXAS TECH UNIVERSITY
HEALTH SCIENCES CENTER™

- **ACCESS Career Initiative:**
 - Focus on Identification & Strengthening Student’s Intrinsic Career Engagement
 - Individual students connected to Avatar ICE: CAREER Engagement Platform.
 - **CAREER MENTORS** to engage students in the career of their choice.
 - Coordinated on AVATAR ICE Platform.
- **ACCESS Education Initiative:**
 - Focus on Chronic Diseases: Diabetes, Hypertension & Obesity
 - Grade appropriate LECTURES with emphasis on chronic diseases & STEAM.
 - **CAREER MENTORS** to educate students in PE or non-credit classes.
 - Coordinated on AVATAR Collaboration Platform.
- **ACCESS Health Initiative:**
 - Annual testing of Fasting Sugar, Hypertension & Obesity Indicators.
 - Students provided access to online electronic medical record.
 - **MENTORS** to strengthen student’s ability to impact family health.
 - Coordinated on AVATAR HEALTH Platform.

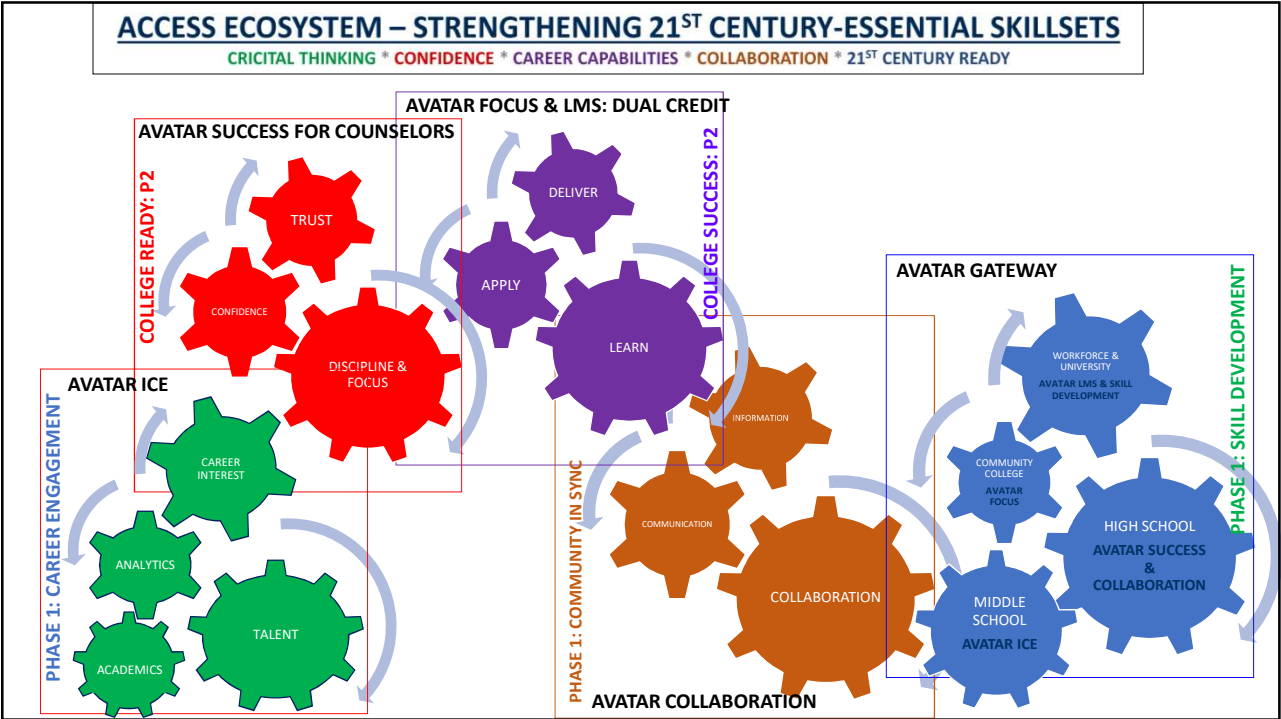


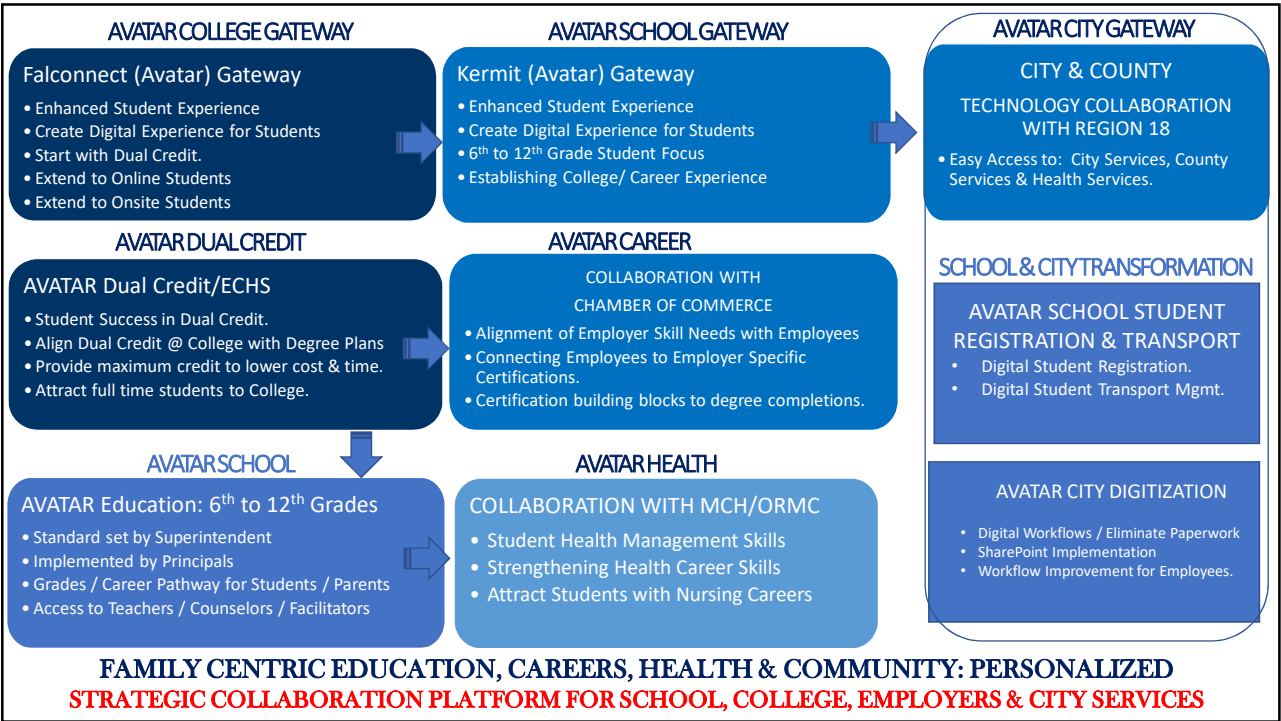
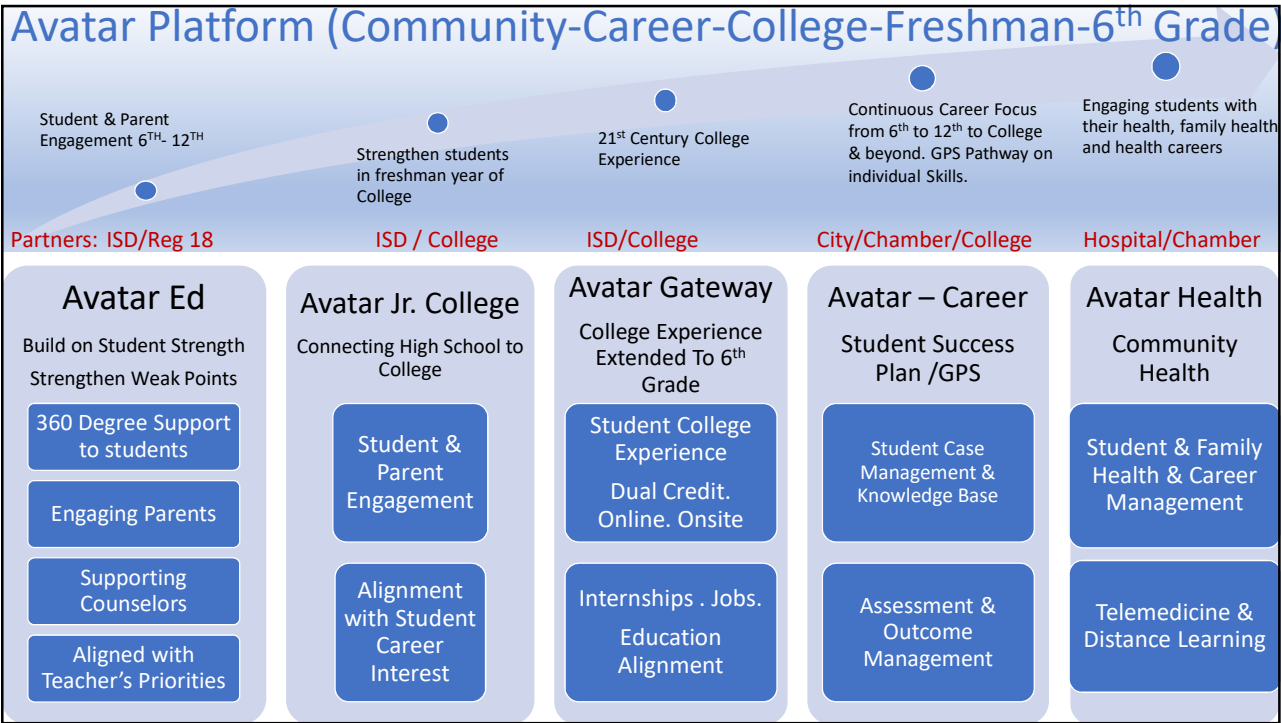
AVATAR CENTER for COMMUNICATION, ENGAGEMENT & STUDENT SUCCESS
Career Connected Students @ Smart Schools

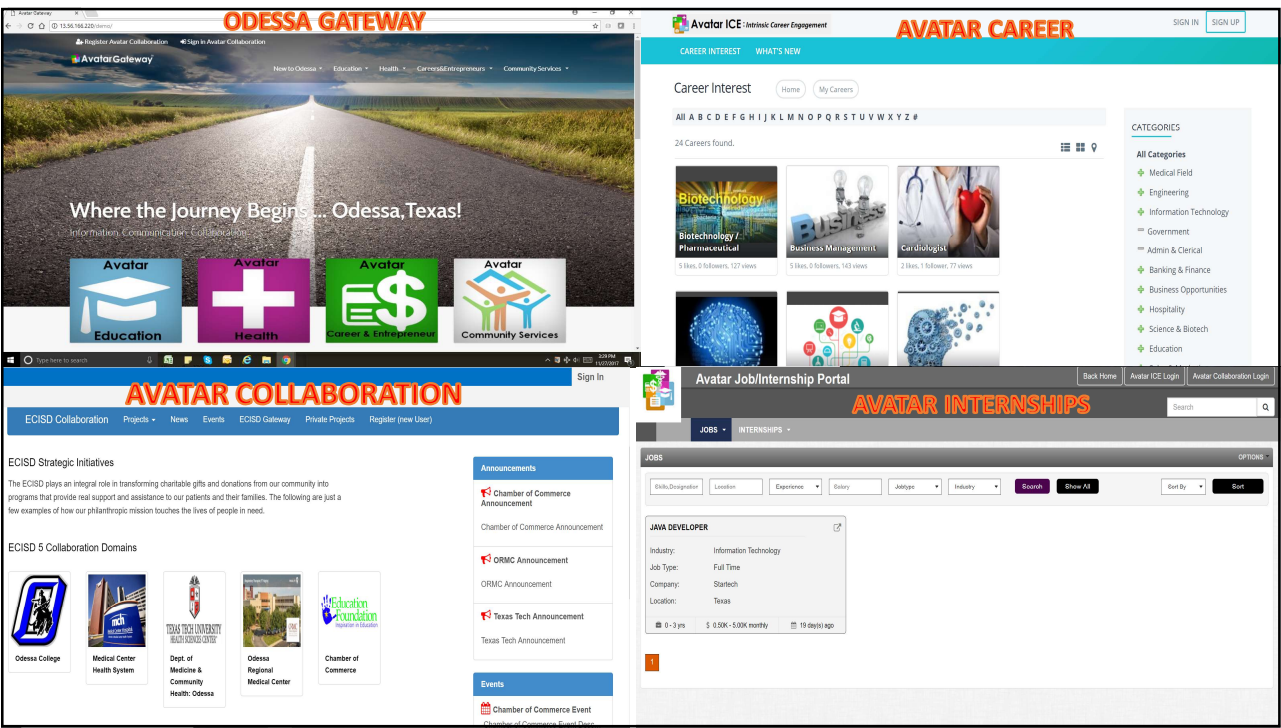


Avatar Connected Communities
Powering Collaboration

- ACCESS @ ECISD will be focused on working with the six middle school campuses.
- ECISD leadership has assigned two middle schools to each of the medical institutions.
- ECISD leadership has also assigned an ACCESS MODERATOR from each campus.
- ACCESS Moderator is the liaison, representing the campus to the ACCESS team.
- All Moderators will be provided with two log-ins:
 - **Login for Avatar ICE** (Career Management Portal)
 - **Login for Avatar Collaboration** (Portal for Project Coordination)
- Phase I:
 - May, 2018: Moderators sign-up for Avatar COLLABORATION and ICE.
 - Moderators Log into COLLABORATION and start planning for next school year.
 - May, 2018: Students sign-up for Avatar ICE.
 - Students are encouraged to log-in and be active on Avatar ICE during summer.
 - Students with highest activity get coupons and prizes (to be determined).
- Phase II: Next School Year – Onsite Lectures & Health Screenings. Schedule: TBD







ACCESS: 21ST CENTURY Focused ECISD Smart School

ACCESS
PHASE I

ICE: Intrinsic Career Engagement from 6th grade to 12th Grade.

COLLABORATION: Campus Specific Student & Community engagement.

GATEWAY: Parents, Students & Community common access point.

HEALTH: Student digital health record on Avatar PHR or CERNER Consumer Portal.

ACCESS
PHASE II

FOCUS: Supporting Dual Credit Students to enter college freshman year confidently.

SUCCESS: Counselor supporting to provide student-specific counseling based on career interest & education track.

REGISTRATION: Student registration made easy and saving time (80%).