



PRELIMINARY PLANS
NOT FOR CONSTRUCTION

Austin Elementary School Art Renderings

118312 | 08/20/24 | Rev 3 2

Natalie Henschel | Shelby Metcalf | Scott Simpson

REPRESENTATIONAL ONLY

Revisions	
Rev	Date
1	10/08/24
2	10/24/24
3	11/26/24

RENDERINGS ARE FOR REPRESENTATIONAL PURPOSES ONLY
FINAL INSTALLATION MAY DIFFER DUE TO ON SITE CONDITIONS





PRELIMINARY PLANS
NOT FOR CONSTRUCTION

Austin Elementary School Art Renderings

118312 | 08/20/24 | Rev 3 3

Natalie Henschel | Shelbey Metcalf | Scott Simpson

Revisions	
Rev	Date
1	10/08/24
2	10/24/24
3	11/26/24

REPRESENTATIONAL ONLY

RENDERINGS ARE FOR REPRESENTATIONAL PURPOSES ONLY
FINAL INSTALLATION MAY DIFFER DUE TO ON SITE CONDITIONS





PRELIMINARY PLANS
 NOT FOR CONSTRUCTION

Austin Elementary School Art Renderings

118312 | 08/20/24 | Rev 3 4

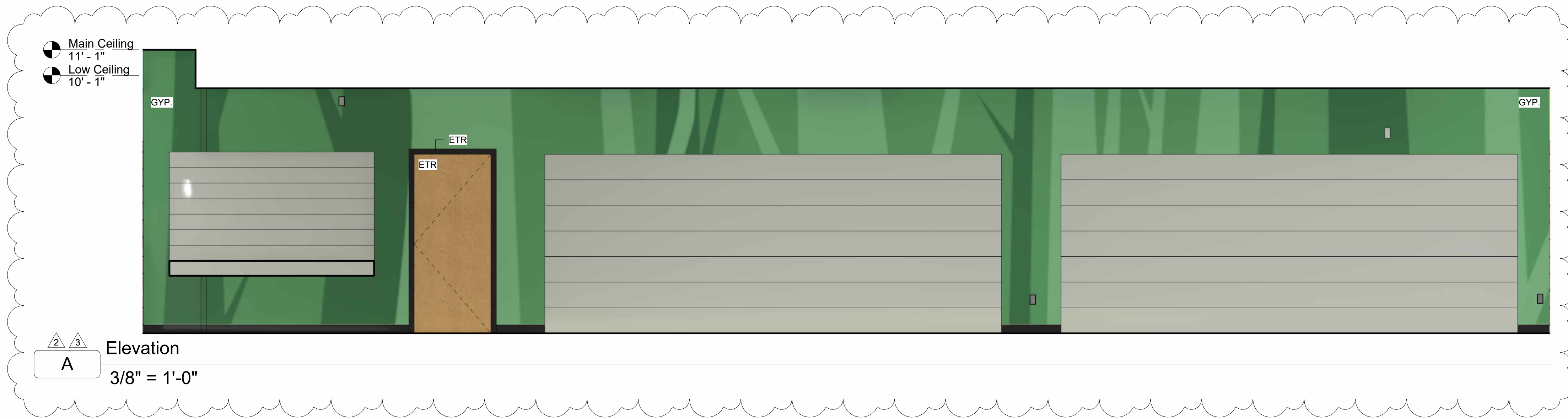
Natalie Henschel | Shelbey Metcalf | Scott Simpson

REPRESENTATIONAL ONLY

Revisions	
Rev	Date
1	10/08/24
2	10/24/24
3	11/26/24



RENDERINGS ARE FOR REPRESENTATIONAL PURPOSES ONLY
 FINAL INSTALLATION MAY DIFFER DUE TO ON SITE CONDITIONS



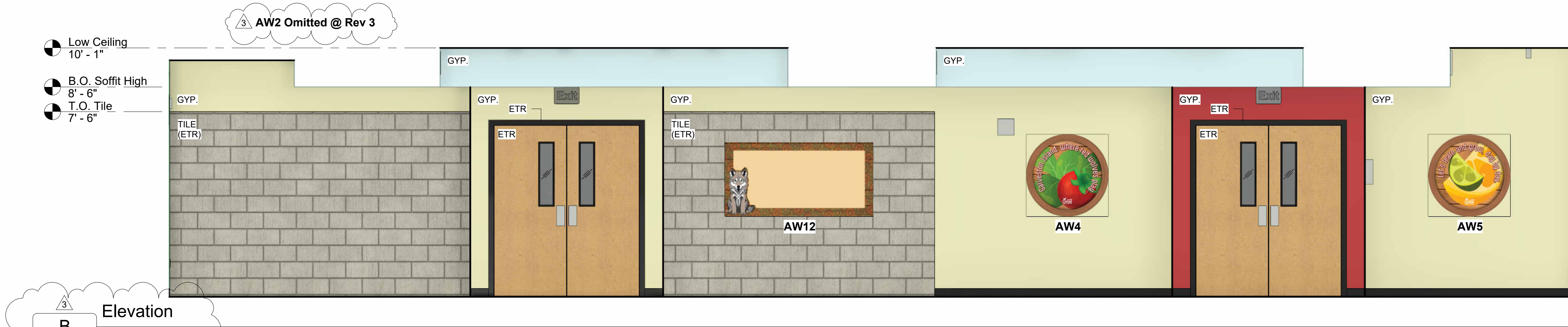
Elevation A
3/8" = 1'-0"

PAINT LEGEND					
	PT1	Hearthrob SW6866		PT4	Organic Green SW6732
	PT2	Springtime SW6708		PT5	Kilkenny SW6740
	PT3	Aviary Blue SW6778		PT6	Espalier SW6734

Note:
General contractor to review paint application and ensure proper paint type ordered. General Contractor is responsible for preparing existing substrate for new finish. All surfaces must be cleaned and prepared according to substrate needs before applying the specified paint.

PT Hunt Club SW6468 Omitted @ Rev 3

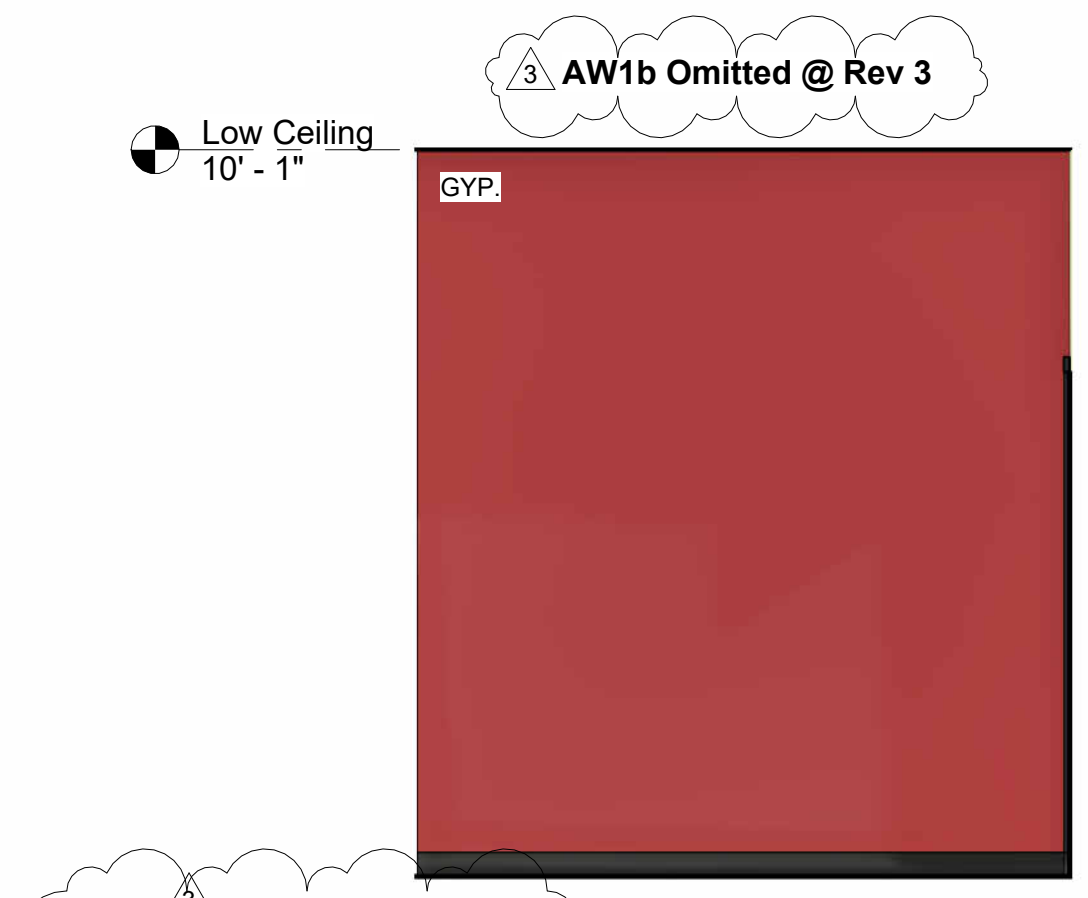
PRELIMINARY PLANS
 NOT FOR CONSTRUCTION



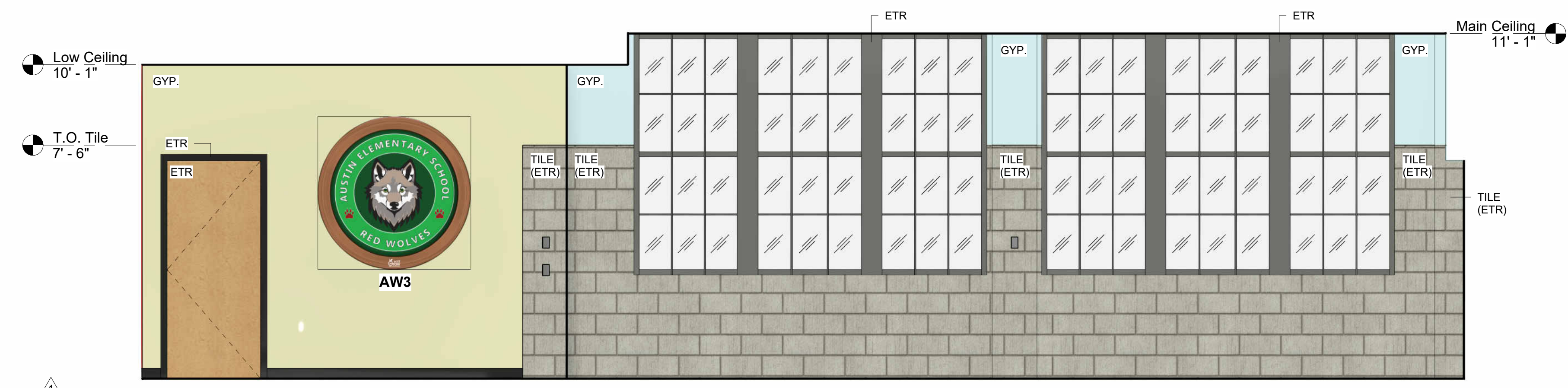
Elevation B
3/8" = 1'-0"



Elevation C
3/8" = 1'-0"



Elevation D
3/8" = 1'-0"



Elevation E
3/8" = 1'-0"

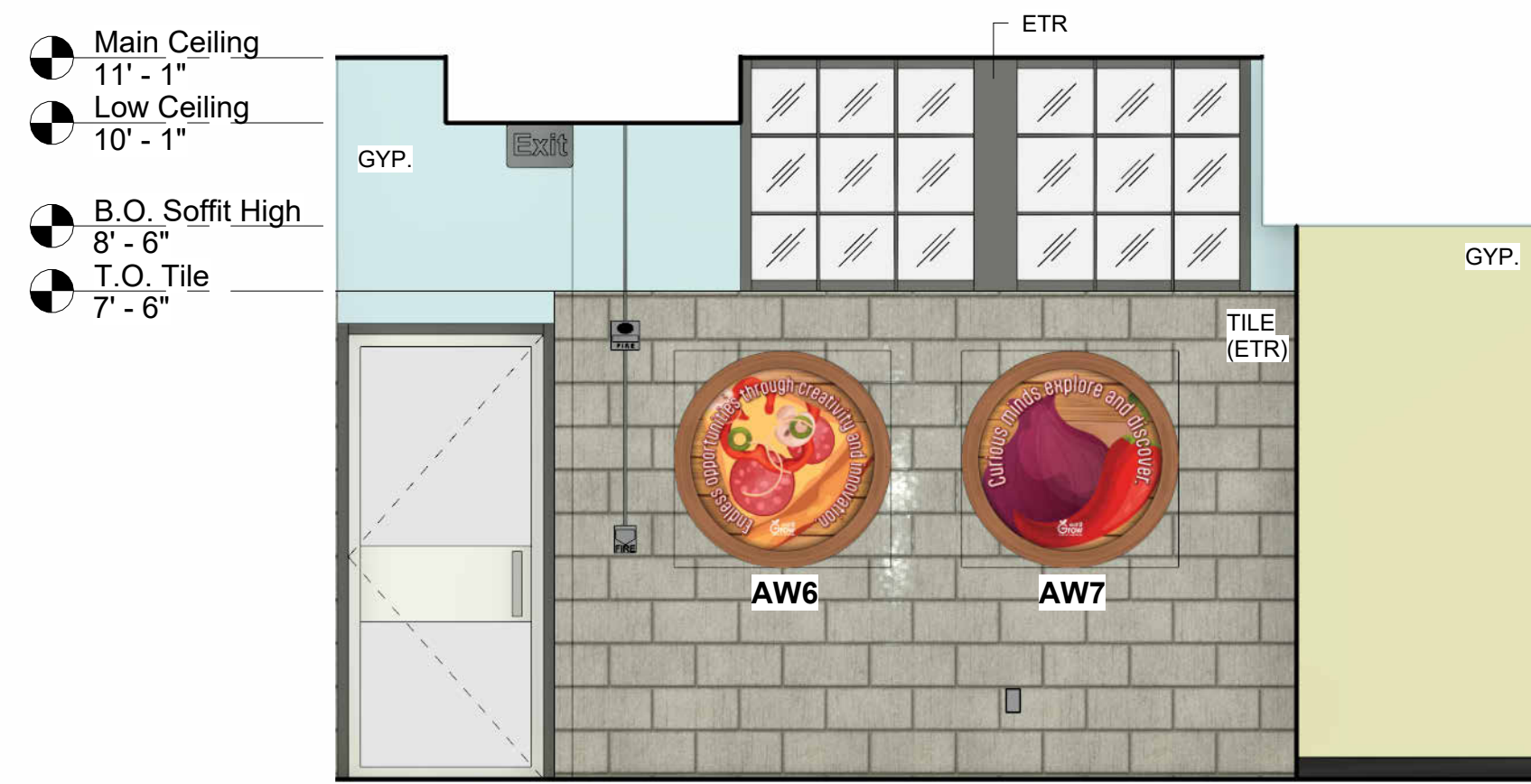
Elevations A-E
Austin Elementary School

118312 | 08/20/24 | Rev 3
 Natalie Henschel | Shelbey Metcalf | Scott Simpson

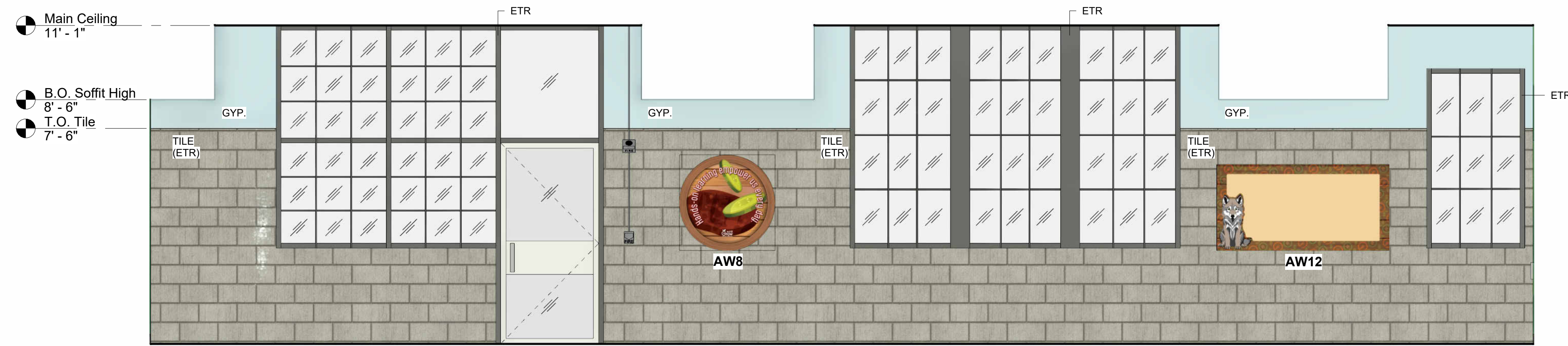
REPRESENTATIONAL ONLY

Revisions	
Rev	Date
1	10/09/24
2	10/24/24
3	11/26/24



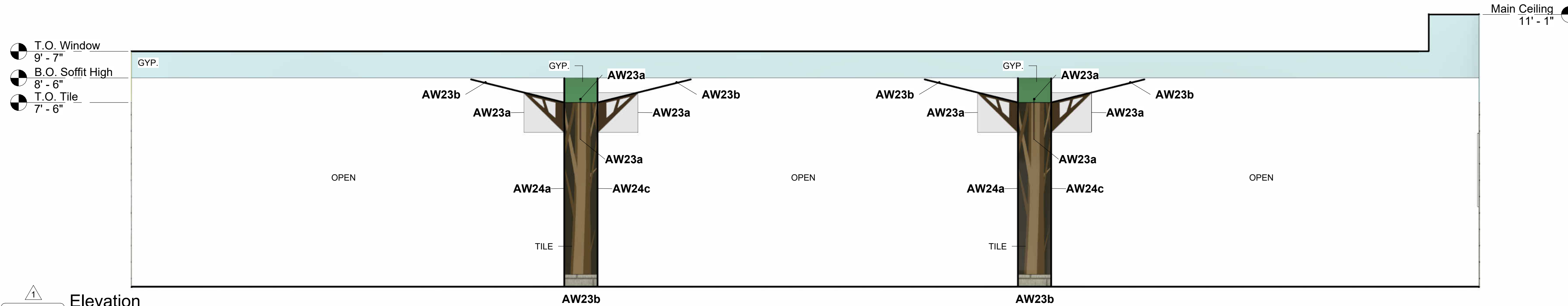


F Elevation
3/8" = 1'-0"



G Elevation
3/8" = 1'-0"

PRELIMINARY PLANS
NOT FOR CONSTRUCTION

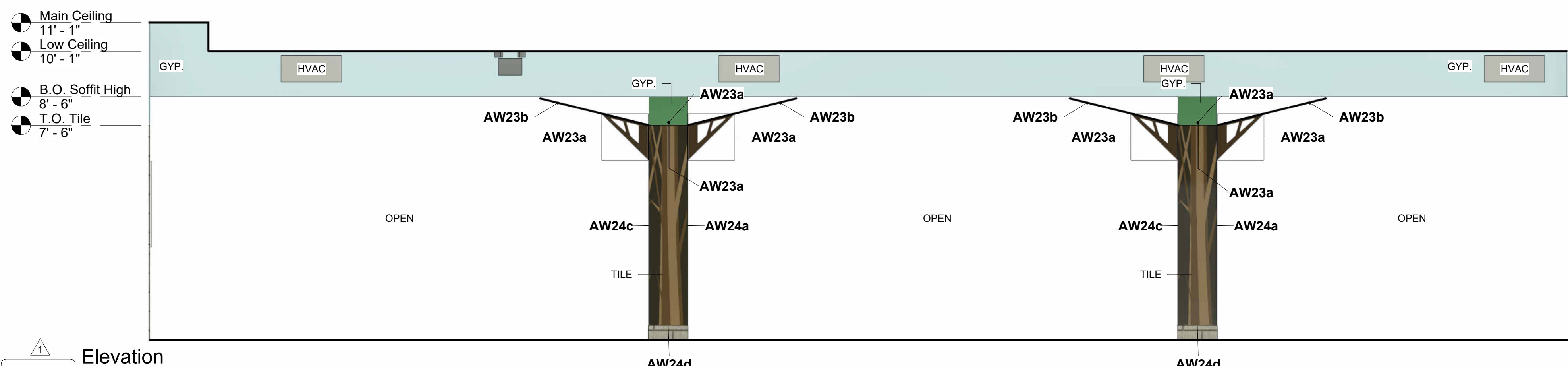


H Elevation
3/8" = 1'-0"

PAINT LEGEND					
	PT1	Hearthrob SW6866		PT4	Organic Green SW6732
	PT2	Springtime SW6708		PT5	Kilkenny SW6740
	PT3	Aviary Blue SW6778		PT6	Espalier SW6734

Note:
General contractor to review paint application and ensure proper paint type ordered. General Contractor is responsible for preparing existing substrate for new finish. All surfaces must be cleaned and prepared according to substrate needs before applying the specified paint.

PT Hunt Club SW6468
Omitted @ Rev 3



J Elevation
3/8" = 1'-0"

Elevations F-J

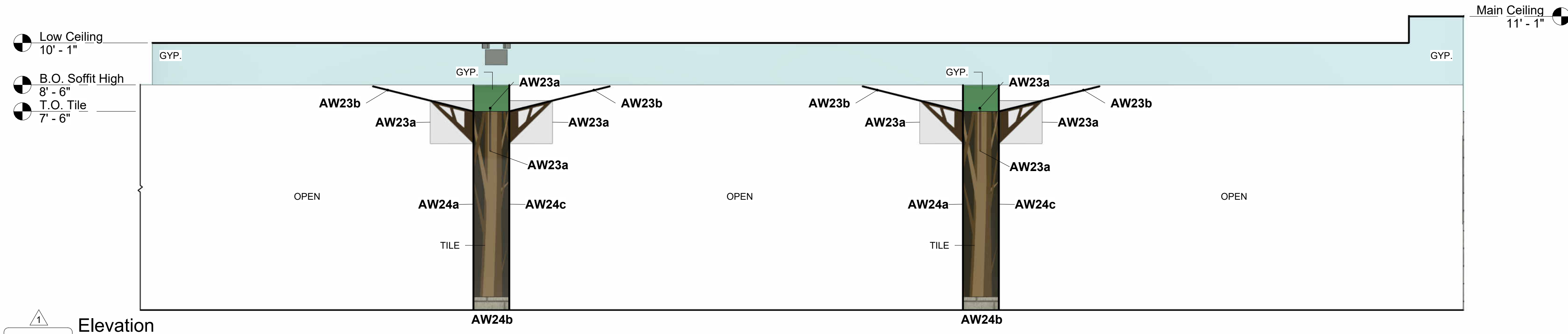
Austin Elementary School

118312 | 08/20/24 | Rev 3
Natalie Henschel | Shelbey Metcalf | Scott Simpson

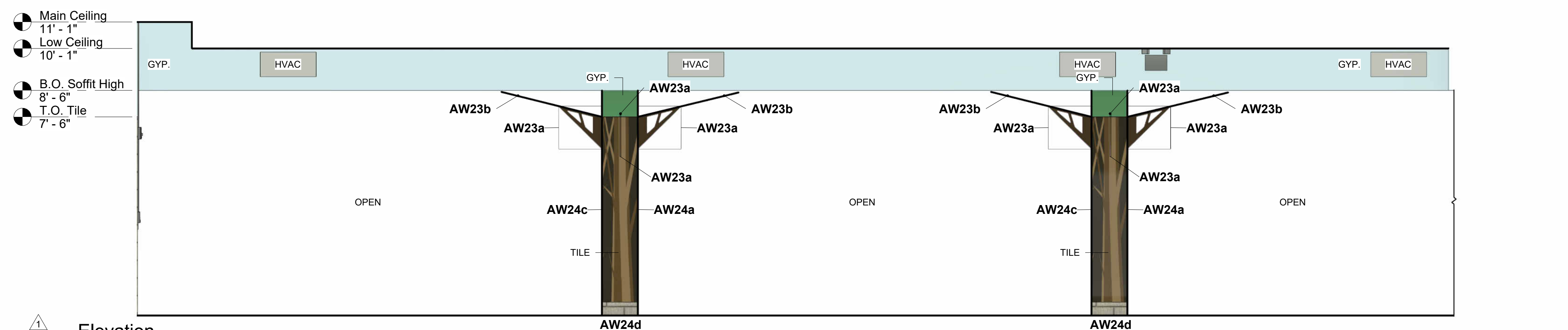
Revisions	
Rev	Date
1	10/08/24
2	10/24/24
3	11/26/24

REPRESENTATIONAL ONLY

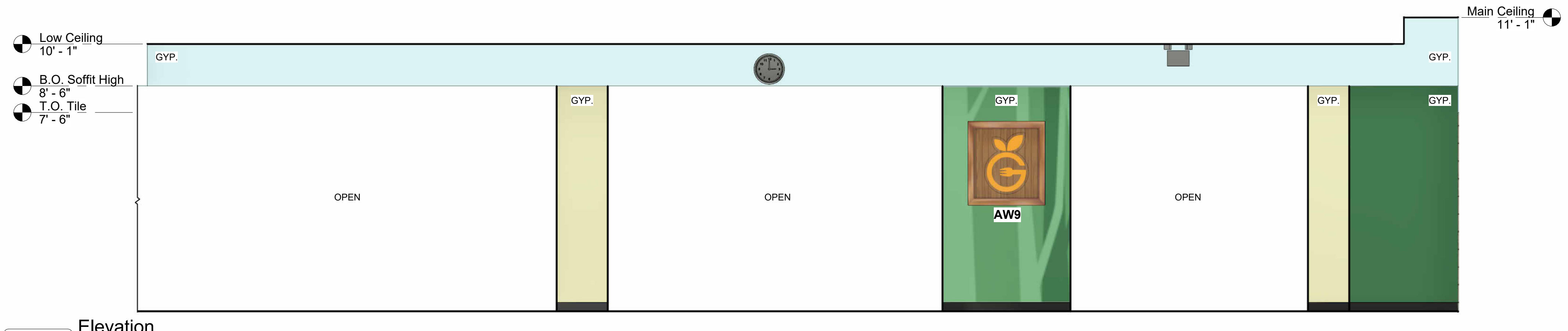




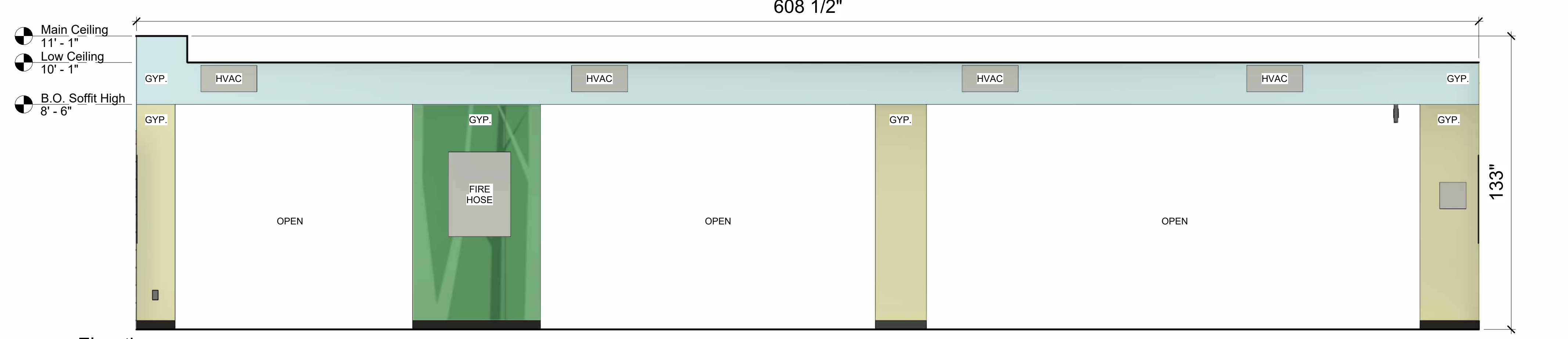
K Elevation
3/8" = 1'-0"



L Elevation
3/8" = 1'-0"



M Elevation
3/8" = 1'-0"



N Elevation
3/8" = 1'-0"

PAINT LEGEND					
	PT1	Hearthrob SW6866		PT4	Organic Green SW6732
	PT2	Springtime SW6708		PT5	Kilkenny SW6740
	PT3	Aviary Blue SW6778		PT6	Espalier SW6734

Note:
General contractor to review paint application and ensure proper paint type ordered. General Contractor is responsible for preparing existing substrate for new finish. All surfaces must be cleaned and prepared according to substrate needs before applying the specified paint.

PT Hunt Club SW6468
Omitted @ Rev 3

PRELIMINARY PLANS
NOT FOR CONSTRUCTION

Elevations K-N

Austin Elementary School

118312 | 08/20/24 | Rev 3

Natalie Henschel | Shelbey Metcalf | Scott Simpson

7

REPRESENTATIONAL ONLY

Revisions	
Rev	Date
1	10/09/24
2	10/24/24
3	11/26/24





Elevation - ETR

O
3/8" = 1'-0"

PAINT LEGEND					
	PT1	Heartthrob SW6866		PT4	Organic Green SW6732
	PT2	Springtime SW6708		PT5	Kilkenny SW6740
	PT3	Aviary Blue SW6778		PT6	Espalier SW6734

Note:
General contractor to review paint application and ensure proper paint type ordered. General Contractor is responsible for preparing existing substrate for new finish. All surfaces must be cleaned and prepared according to substrate needs before applying the specified paint.

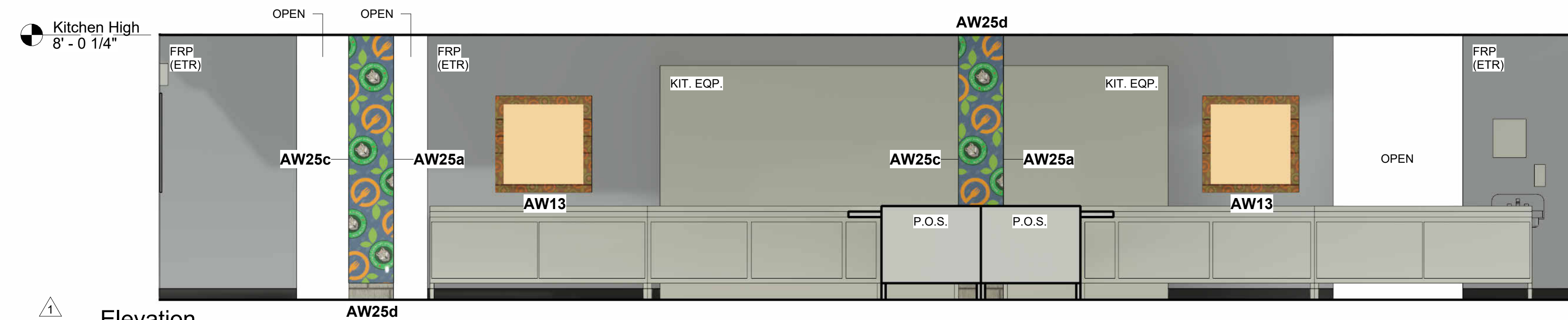
PT Hunt Club SW6468
Omitted @ Rev 3

PRELIMINARY PLANS
NOT FOR CONSTRUCTION



Elevation

P
3/8" = 1'-0"



Elevation

Q
3/8" = 1'-0"



Elevation - ETR

R
3/8" = 1'-0"

Elevations O-T

Austin Elementary School

118312 | 08/20/24 | Rev 3

Natalie Henschel | Shelbey Metcalf | Scott Simpson

8

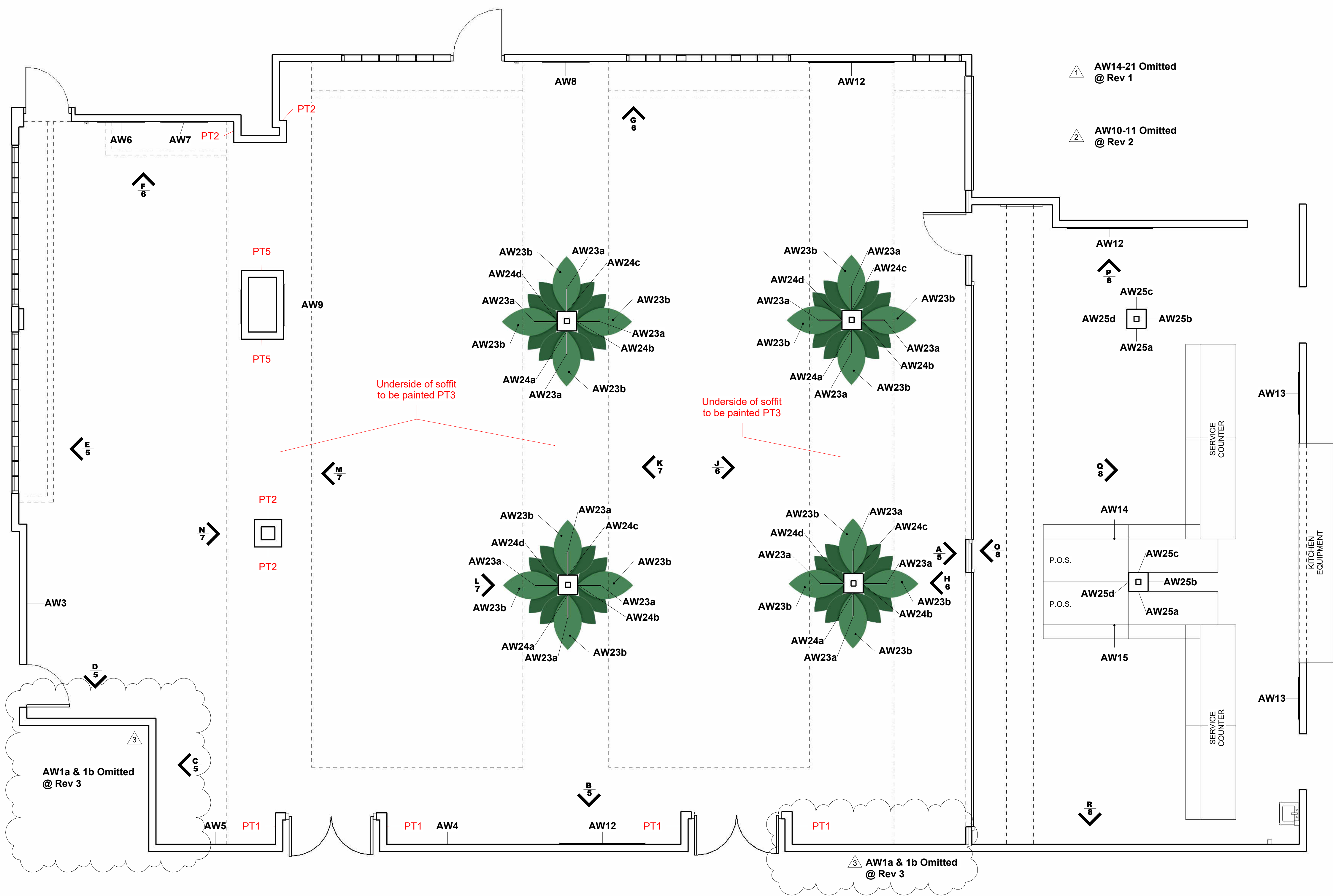
REPRESENTATIONAL ONLY

Revisions	
Rev	Date
1	10/08/24
2	10/24/24
3	11/26/24

All wall and door finishes existing to remain.



PRELIMINARY PLANS
NOT FOR CONSTRUCTION



1 2 3
A Finish Plan
1/4" = 1'-0"

Finish Plan

Austin Elementary School

118312 | 08/20/24 | Rev 3

Natalie Henschel | Shelbey Metcalf | Scott Simpson

9

REPRESENTATIONAL ONLY

Revisions	
Rev	Date
1	10/09/24
2	10/24/24
3	11/26/24



PRELIMINARY PLANS
NOT FOR CONSTRUCTION

⚠️ **AW1a, AW1b, AW2**
Omitted @ Rev 3



AW3 Custom Graphic Art
1 1/2" = 1'-0"

Art Schedule 1						
Tag	Count	Layer 1 Spec	Wall Substrate	Production Notes	Installation Notes	Height A.F.F.
AW3	1	Direct print on 6mm white PVC substrate; mount to wall with limited visible hardware	Gypsum	--	--	3' - 6"

Art Details

Austin Elementary School

118312 | 08/20/24 | Rev 3

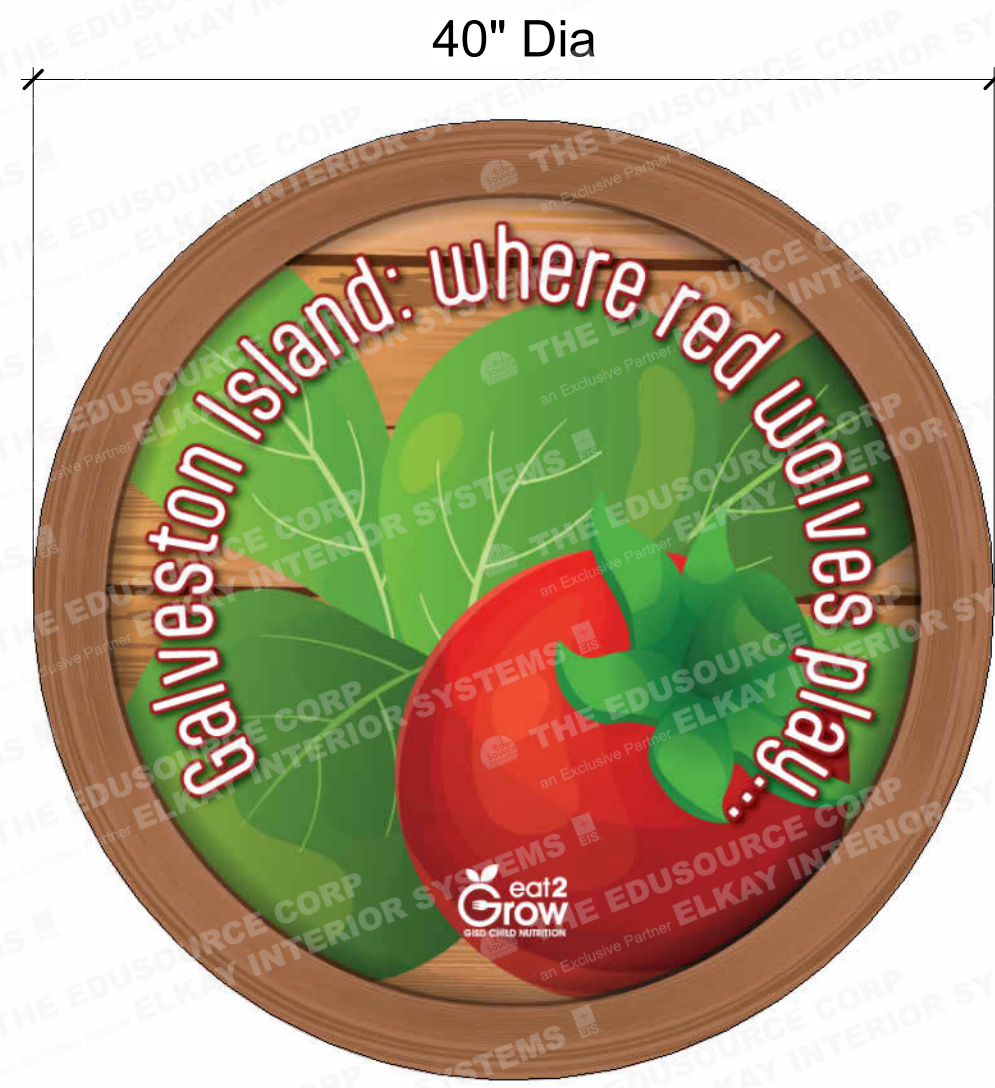
Natalie Henschel | Shelbey Metcalf | Scott Simpson

10

REPRESENTATIONAL ONLY

Revisions	
Rev	Date
1	10/09/24
2	10/24/24
3	11/26/24





AW4 Custom Graphic Art
1 1/2" = 1'-0"



AW5 Custom Graphic Art
1 1/2" = 1'-0"



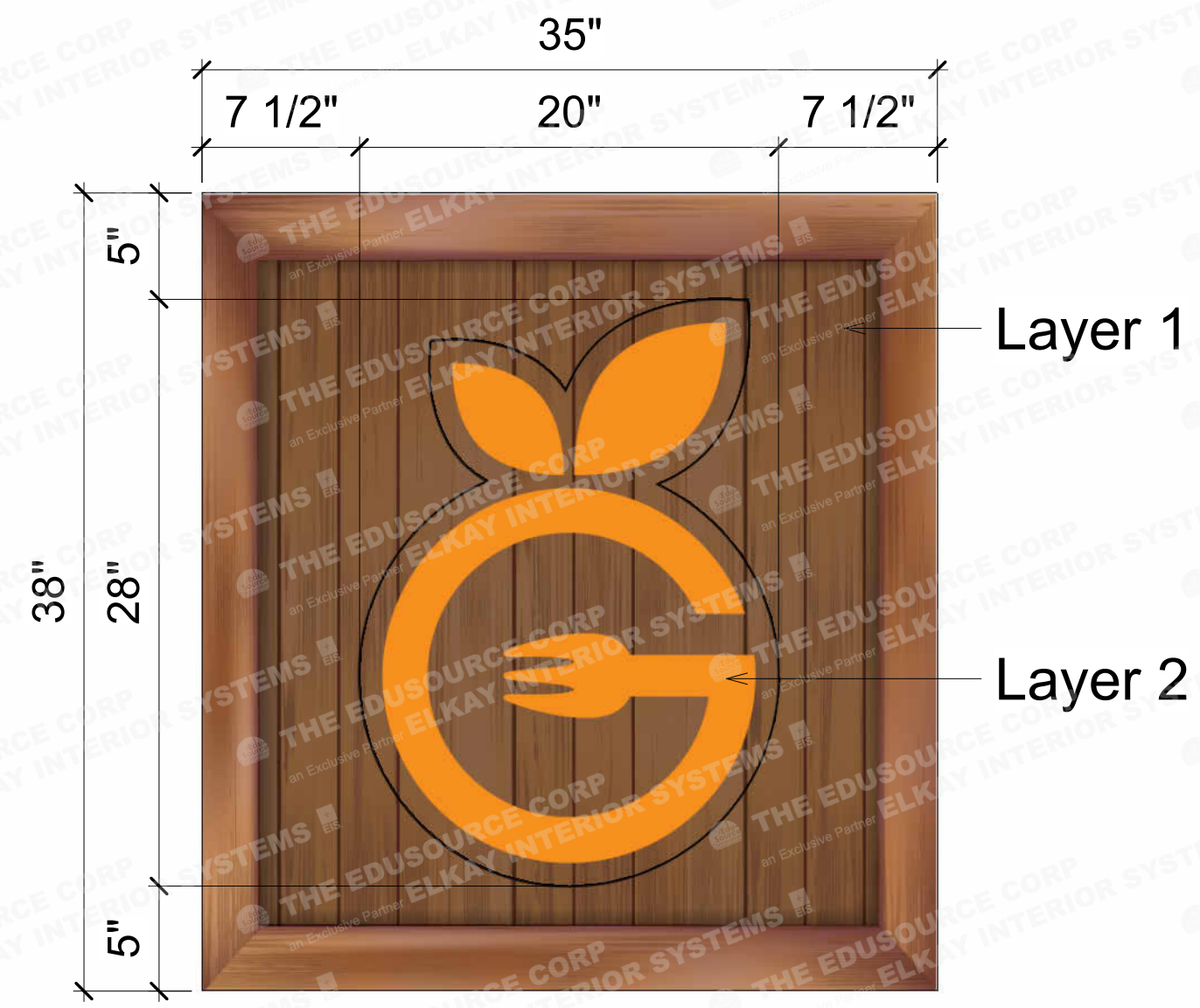
AW6 Custom Graphic Art
1 1/2" = 1'-0"



AW7 Custom Graphic Art
1 1/2" = 1'-0"



AW8 Custom Graphic Art
1 1/2" = 1'-0"



AW9 Custom Graphic Art
1 1/2" = 1'-0"

AW10-11 Omitted @ Rev 2

Art Schedule 2							
Tag	Count	Layer 1 Spec	Layer 2 Spec	Wall Substrate	Production Notes	Installation Notes	Height A.F.F.
AW4	1	Direct print on 6mm white PVC substrate; mount to wall with limited visible hardware	--	Gypsum	--	--	3' - 3"
AW5	1	Direct print on 6mm white PVC substrate; mount to wall with limited visible hardware	--	Gypsum	--	--	3' - 3"
AW6	1	Direct print on 6mm white PVC substrate; mount to wall with limited visible hardware	--	Tile	--	--	3' - 3"
AW7	1	Direct print on 6mm white PVC substrate; mount to wall with limited visible hardware	--	Tile	--	--	3' - 3"
AW8	1	Direct print on 6mm white PVC substrate; mount to wall with limited visible hardware	--	Tile	--	--	3' - 3"
AW9	1	Direct print on 6mm white PVC substrate; mount to wall with limited visible hardware	Layer 1b (text): Direct print on 1/4" clear acrylic substrate, spot white first face; mount to wall with 1" standoffs	Gypsum	--	--	4' - 0"

Revisions	
Rev	Date
1	10/09/24
2	10/24/24
3	11/26/24

PRELIMINARY PLANS
NOT FOR CONSTRUCTION

Art Details

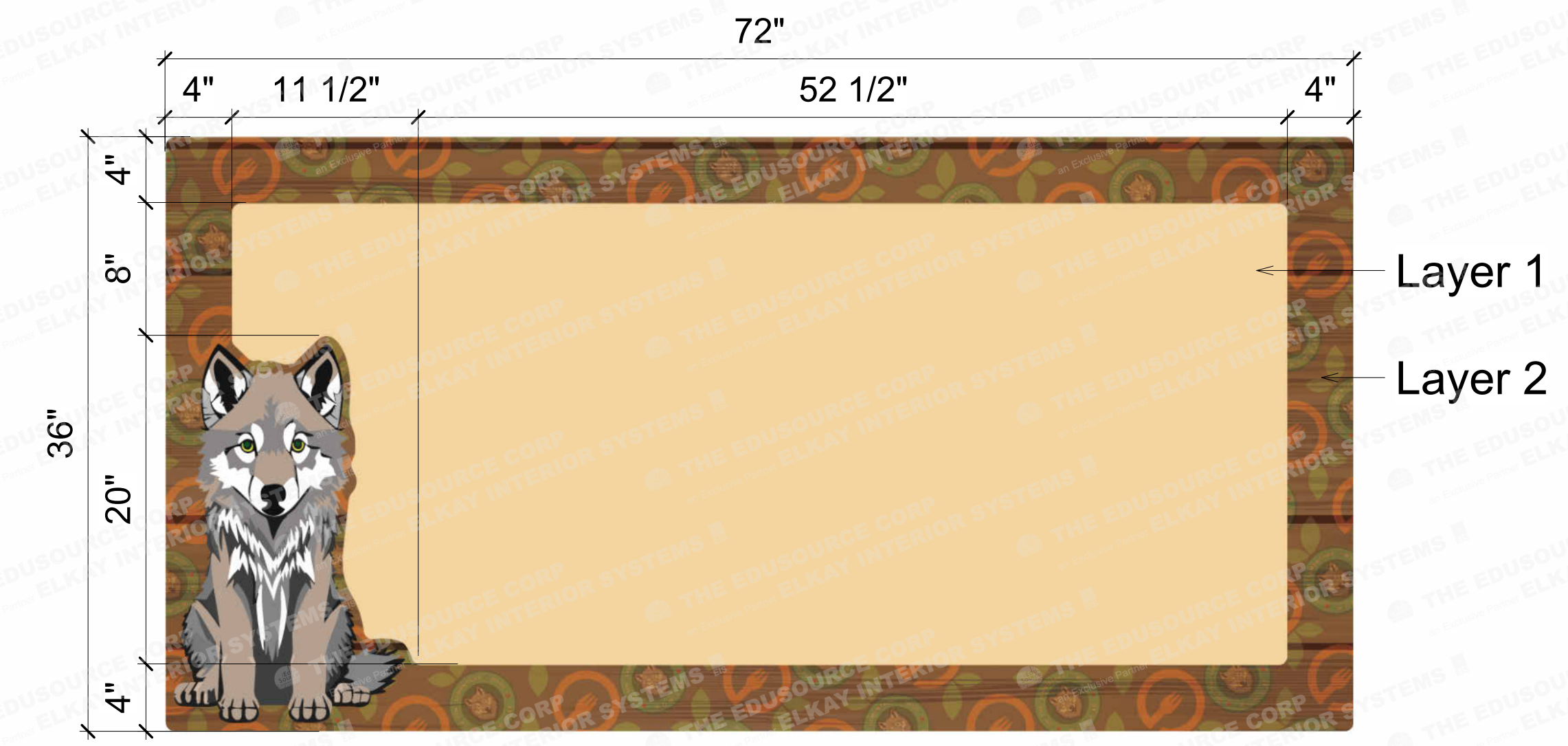
Austin Elementary School

118312 | 08/20/24 | Rev 3

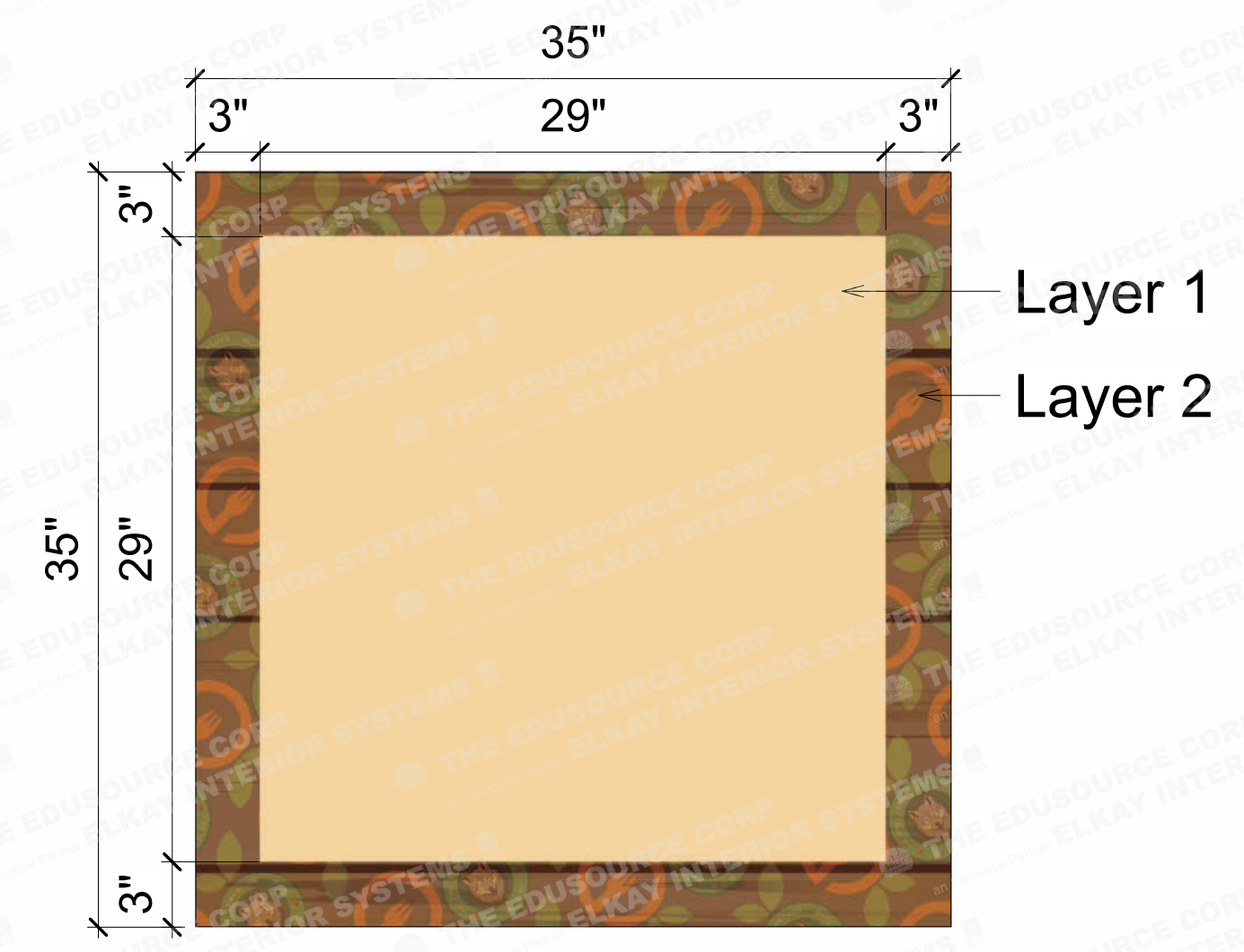
Natalie Henschel | Shelby Metcalf | Scott Simpson



PRELIMINARY PLANS
NOT FOR CONSTRUCTION

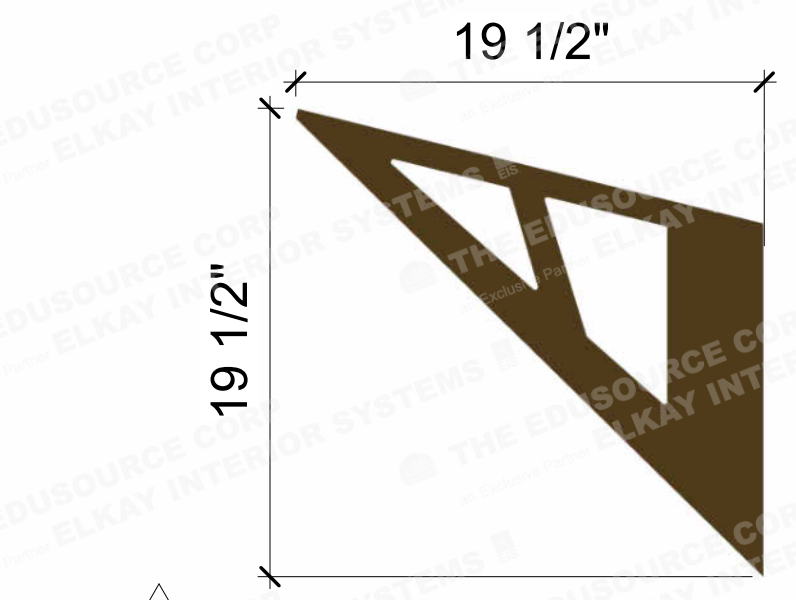


AW12 Custom Graphic Bulletin Board
1 1/2" = 1'-0"

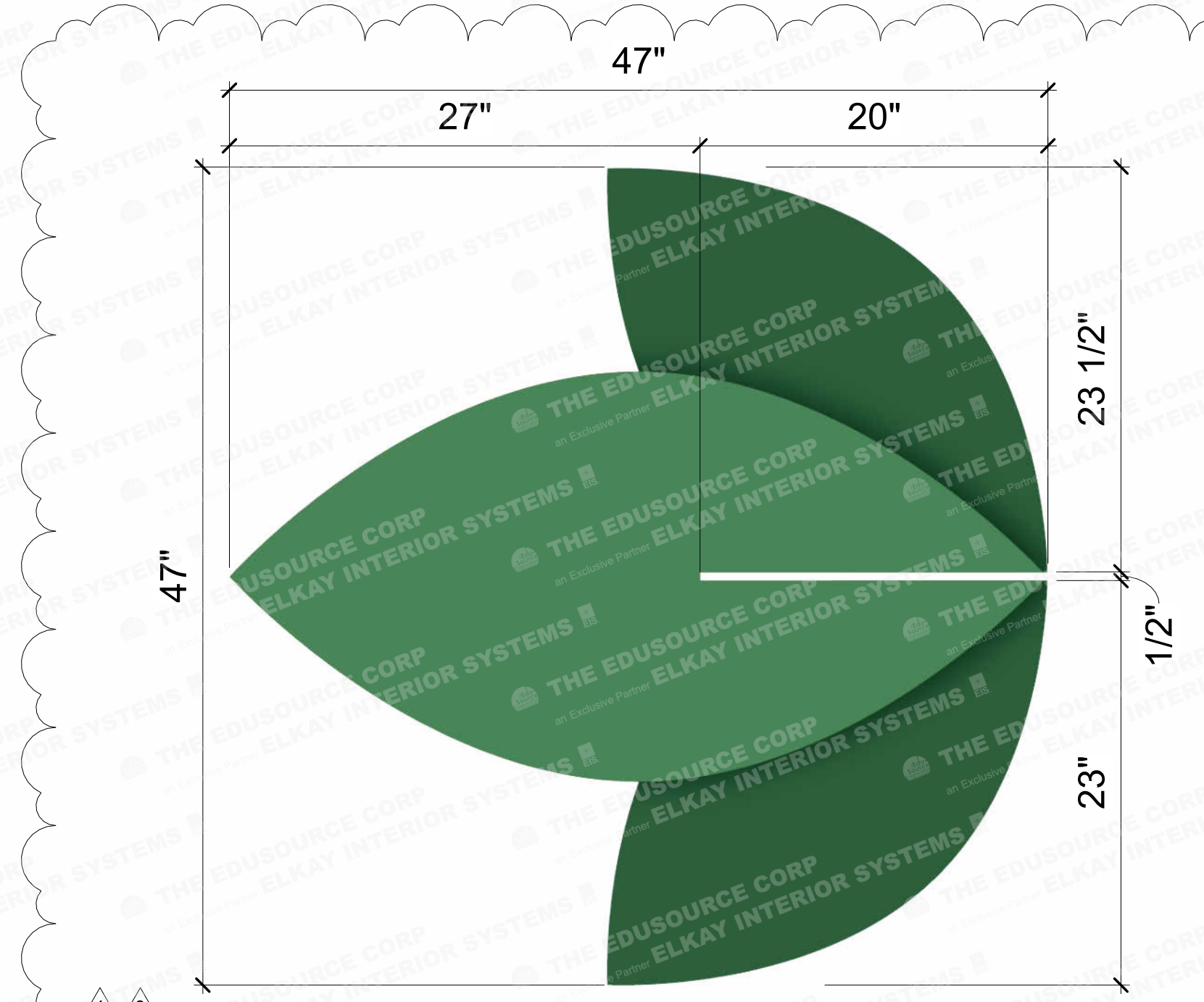


AW13 Custom Graphic Bulletin Board
1 1/2" = 1'-0"

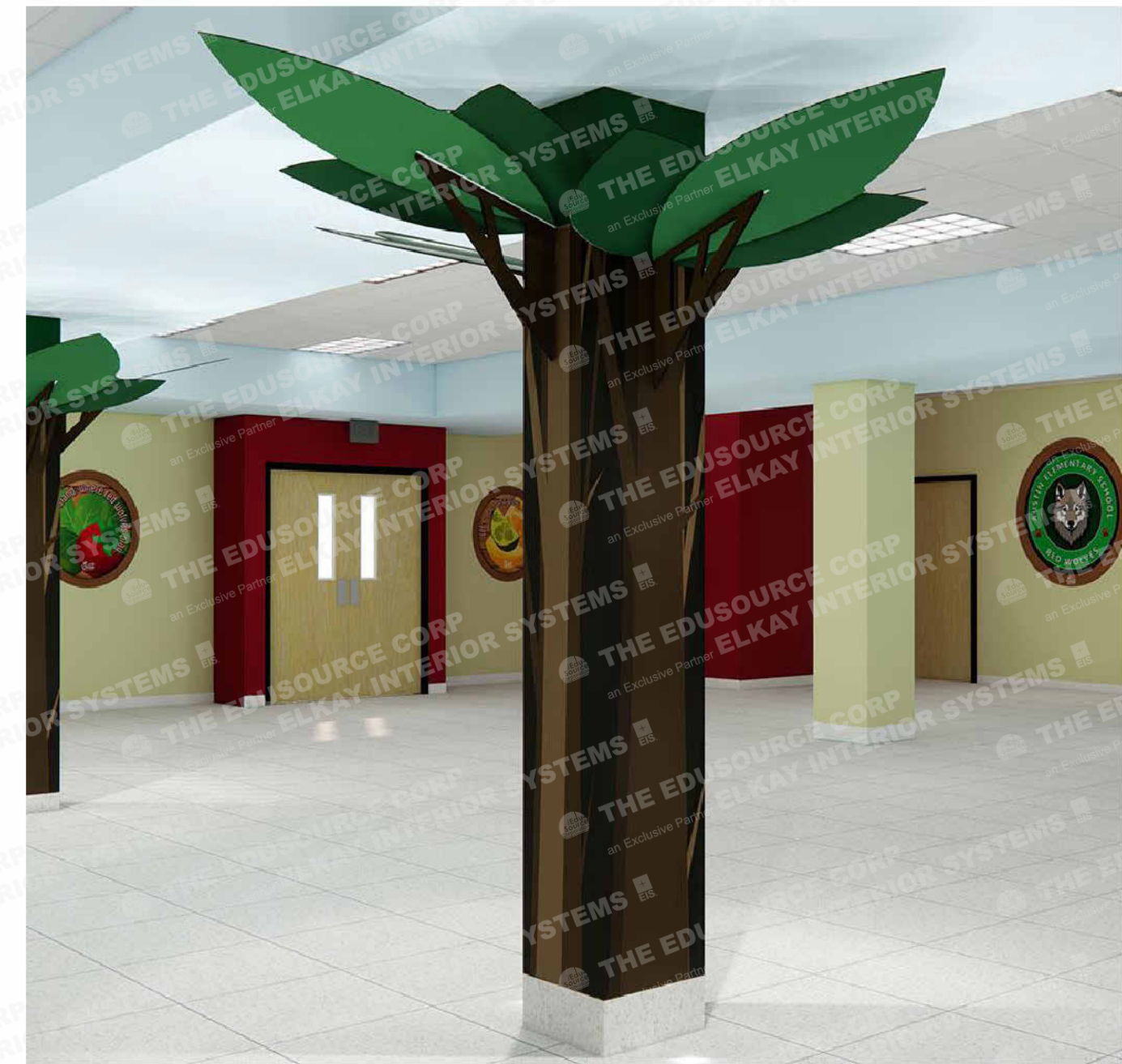
△ Art Omitted @ Rev 1:
AW14-21



AW23a Custom Graphic Art
1 1/2" = 1'-0"



AW23b Custom Graphic Art
1 1/2" = 1'-0"



Art Details

12

REPRESENTATIONAL ONLY

Austin Elementary School

118312 | 08/20/24 | Rev 3

Natalie Henschel | Shelbey Metcalf | Scott Simpson

Art Schedule 3

Tag	Count	Layer 1 Spec	Layer 2 Spec	Wall Substrate	Production Notes	Installation Notes	Height A.F.F.
AW12	3	Layer 1: MDF Backed Natural Cork	Layer 2: Direct print on 12mm white PVC substrate; mount to layer 1 with limited visible hardware	Tile	--	--	3' - 3"
AW13	2	Layer 1: MDF Backed Natural Cork	Layer 2: Direct print on 12mm white PVC substrate; mount to layer 1 with limited visible hardware	FRP	--	--	3' - 3"
△ AW23a	16	Direct print on 12mm Black PVC substrate; double-sided with flood white; mount perpendicular to wall with two piece bracket set, support elements as needed	--	Tile	--	--	<varies>
△ AW23b	16	Direct print on 3mm white Dibond substrate; slot fit to top edge of AW23.a, support elements as needed	--	Tile	--	--	0"

Revisions	
Rev	Date
1	10/09/24
2	10/24/24
3	11/26/24

