

Manor Independent School District
Board of Trustees Board Meeting Agenda Item
March 25, 2025

CONSENT ITEM SHEET

RE: Consider and possible action regarding the purchase of utility upgrades to accommodate dish machines and garbage disposals.

Supporting Documents:

1. *Texas Department of Agriculture approved Excess Net Cash Resources spending plan*
2. *Utility Upgrade Specifications*
3. *Quotes*

District Goals*:

FACILITIES & MAINTENANCE- By 2026, Manor ISD will proactively provide facilities to ensure 100% of scholars will have safe, well-maintained, environmentally sustainable, and community accessible facilities.

Bottom of Form

Background Information:

This item is presented for Board approval to authorize the MISD Food and Nutrition utility upgrades (electrical and ventilation) for dish machines and garbage disposals. The total project cost is \$113,890.00, to be funded from the 2024-25 Food and Nutrition budget.

Administrative Recommendation:

Administration recommends that the Board approve the proposed project cost of \$113,890.00 and delegate authority for the Superintendent or designee to finalize the agreement and submit required documentation to the Texas Education Agency, Department of Agriculture, or any other relevant governing body.

Fiscal Implications:

The total cost of the project is \$113,890.00, which will be funded through the 2024-25 Food and Nutrition budget.

Proposed Motion Language:

"I move that the Board approve the project cost of \$113,890.00 for the MISD Food and Nutrition utility upgrades (electrical and ventilation) and delegate authority to the Superintendent or their designee to finalize the agreement and submit any required documentation to the Texas Education Agency, Department of Agriculture, or any other relevant governing body."

Joe Mendez

Contact Person

Dr. Robert Sormani

Approved by Superintendent

Excess Net Cash Resources Plan

Federal regulations (7 CFR 210.19(a)(1)) require state agencies to monitor the level of net cash resources in a district's food service fund. These regulations specifically require that the level of net cash resources not exceed three months' average expenditures, as reported in the food service fund.

Net cash resources are defined as:

All monies, as determined in accordance with the State agency's established accounting system, that are available to or have accrued to a school food authority's nonprofit school food service at any given time, less cash payable. Such monies may include, but are not limited to, cash on hand, cash receivable, earnings on investments, cash on deposit and the value of stocks, bonds or other negotiable securities. (7 CFR 210.2)

Net Cash Resources Calculation	
<p>Current Assets Codes:</p> <p>1100 Cash and cash equivalents 1120 Current investments 1240 Due from other government (may also be called receivables from other government) 1300 Inventories 1410 Prepayments</p> <p>* Net cash resources do not include food inventories (including USDA Foods), equipment, or other non-cash resources.</p>	<p>Current Liabilities Codes:</p> <p>2110 Accounts payable 2120 Short term debt payable—current 2150 Payroll deductions and withholding payable 2160 Accrued wages and benefit payable 2170 Due to other funds 2180 Due to other governments 2190 Due to student groups 2200 Accrued expenditures 2300 Unearned revenues</p>

Action Steps:

- At fiscal year-end, use the above assets and liabilities codes to complete the following:
 - Current Assets (Excluding Inventories) – Current Liabilities = Net Cash Resources
 - (Total Expenditures / number of operating months) x 3 months = Three-Month Average Expenditures
- Respond with a detailed current spending plan to reduce the resources in excess. Use the spending plan template on the next page as follows:
 - Provide an itemized list of allowable expenses used to reduce the excess cash resources—for example, expenses used to improve the quality of meals or the purchase/replacement of food service equipment.
 - Provide a detailed explanation of how the listed expenses will be used for the support of the food service program and are necessary, reasonable, allocable, and allowable under federal and state rules and regulations
- Email the spending plan to School.Operations@TexasAgriculture.gov.

For more information, see the *Administrator's Reference Manual (ARM)*, Section 16, *Financial System*.

Contracting Entity (CE): Manor ISD

Date: 02/27/2024

School Year: 2023-2024

Completion Date:

Net Cash Resources Current Assets (Excluding Inventories) - Current Liabilities	\$ 3,636,959.00
Three-Month Average Expenditures (Total Expenditures / operating months) x 3 months	-\$ 1,718,952.25
Excess Net Cash Resources (Excess Fund Balance)	\$ 1,918,006.75

Description of allowable expenditure(s) proposed to decrease excess net cash resources:

Description of activity	Unit(s)	Estimated Cost	Time frame
Steamer with Installation	7	98,000.00	1 Year
Ovens with Installation	10	120,000.00	1 Year
Serving Line with Installation	2	180,000.00	6 Months
Milk Coolers with Installation	10	50,000.00	6 Months
Reach In Coolers with Installation	4	28,000.00	6 Months
Ranges with Installation	6	300,000.00	6 Months
Garbage Disposals with Installation	6	18,000.00	6 Months
Warmers with Installation	3	39,000.00	6 Months
Box Truck	1	62,000.00	2 Months
Dish Machines with Installation	15	450,000.00	1 Year
Food Processors	20	122,000.00	2 Months
Vent Hood Fans iwht Intallation	2	10,000.00	1 Year
Equipment repair/Services/Fresh Produce		442,000.00	1 Year
TOTAL Must be greater than or equal to the Excess Net Cash Resources amount		\$ 1,919,000.00	

Please provide a short narrative explaining the following:

- **How the above expenses benefit the School Nutrition Program(s) and comply with financial regulations.**
- **The processes that will be in place to prevent excess net cash resources from reoccurring in the future at all sites.**

The equipment and services listed above are necessary for Manor ISO to replace existing equipment that is outdated, no longer functioning and not repairable, add new equipment and services due to increases in enrollment/meal participation, and continue to increase scratch cooking district wide.

The Food Service Director will monitor the finances of the department on a weekly basis and meet quarterly with the CFO of Manor ISD to monitor department finances and make a plan to decrease excess net cash resources as necessary.

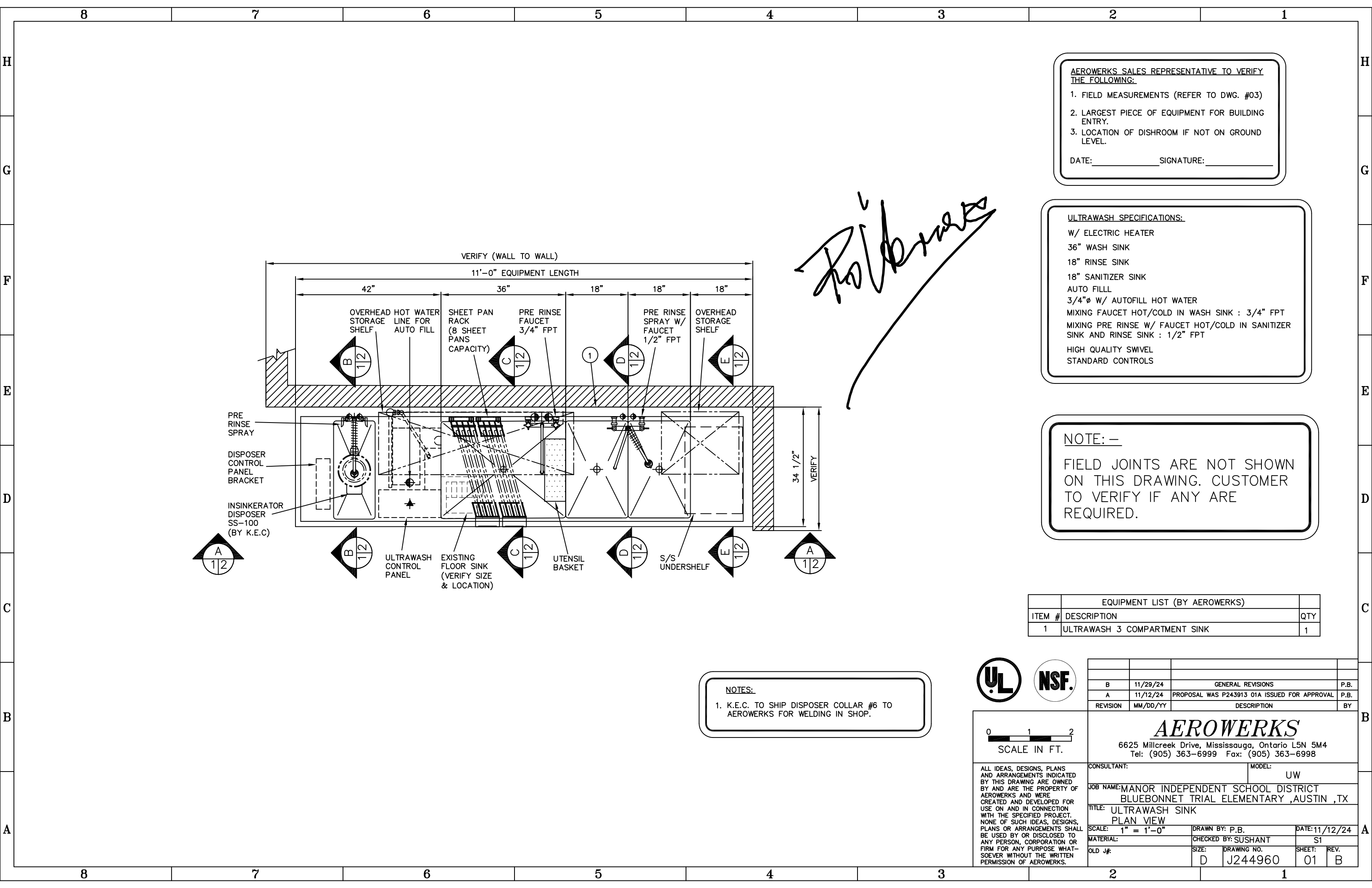

Signature of Representative Authorized in TX-UNPS


Date

Printed Name of Representative Authorized in TX-UNPS

TDA Approval

Date



AEROWERKS SALES REPRESENTATIVE TO VERIFY THE FOLLOWING:

1. FIELD MEASUREMENTS (REFER TO DWG. #03)
2. LARGEST PIECE OF EQUIPMENT FOR BUILDING ENTRY.
3. LOCATION OF DISHROOM IF NOT ON GROUND LEVEL.

DATE: _____ SIGNATURE: _____

ULTRAWASH SPECIFICATIONS:

W/ ELECTRIC HEATER
36" WASH SINK
18" RINSE SINK
18" SANITIZER SINK
AUTO FILL
3/4"Ø W/ AUTOFILL HOT WATER
MIXING FAUCET HOT/COLD IN WASH SINK : 3/4" FPT
MIXING PRE RINSE W/ FAUCET HOT/COLD IN SANITIZER SINK AND RINSE SINK : 1/2" FPT
HIGH QUALITY SWIVEL
STANDARD CONTROLS

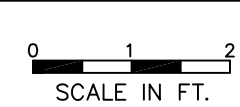
NOTE: —

FIELD JOINTS ARE NOT SHOWN ON THIS DRAWING. CUSTOMER TO VERIFY IF ANY ARE REQUIRED.

EQUIPMENT LIST (BY AEROWERKS)		
ITEM #	DESCRIPTION	QTY
1	ULTRAWASH 3 COMPARTMENT SINK	1

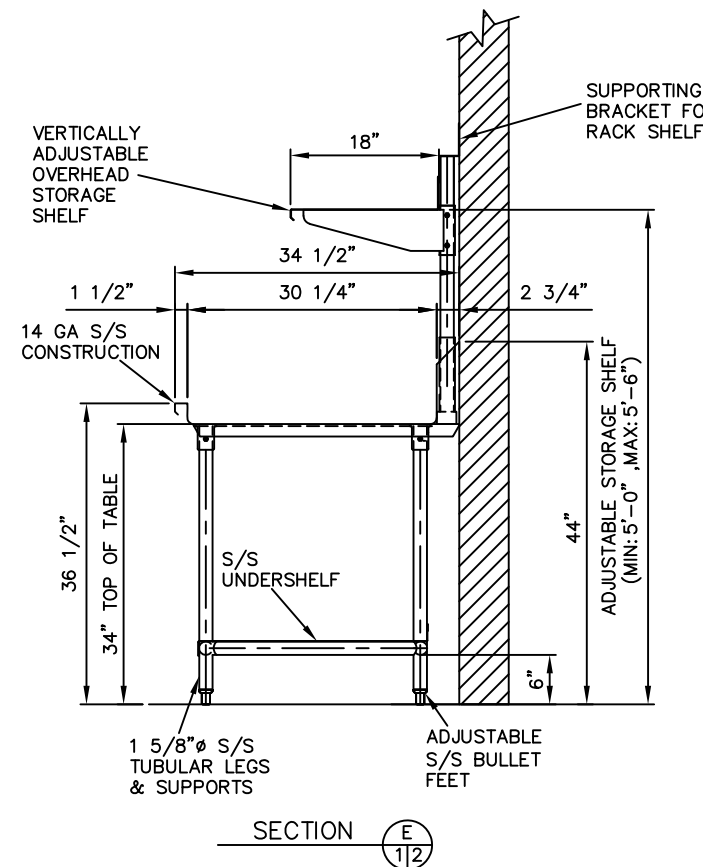
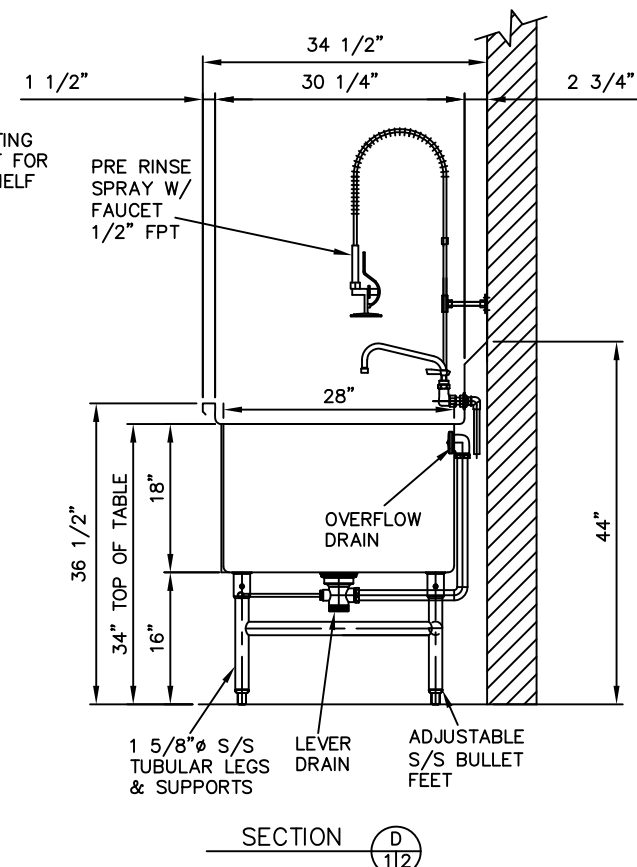
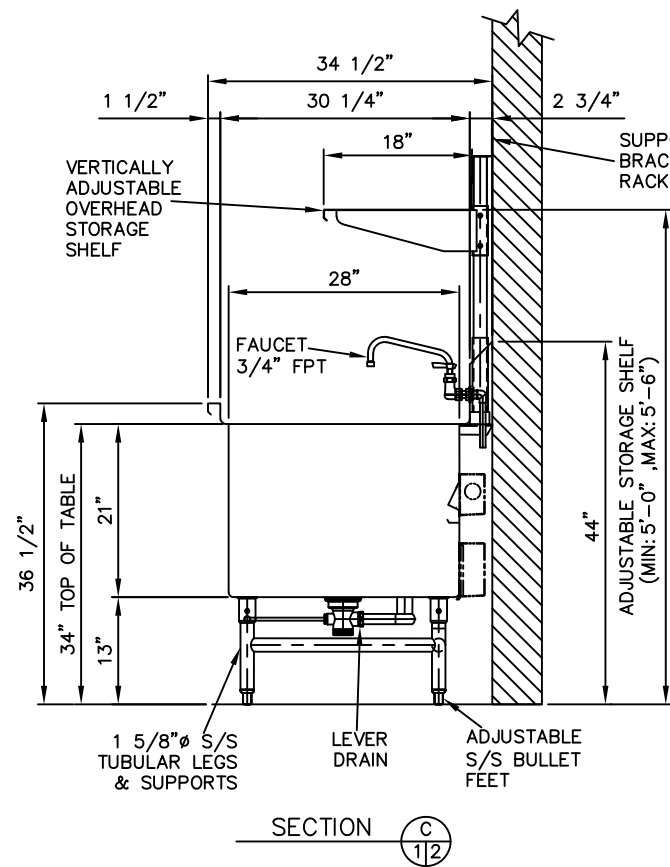
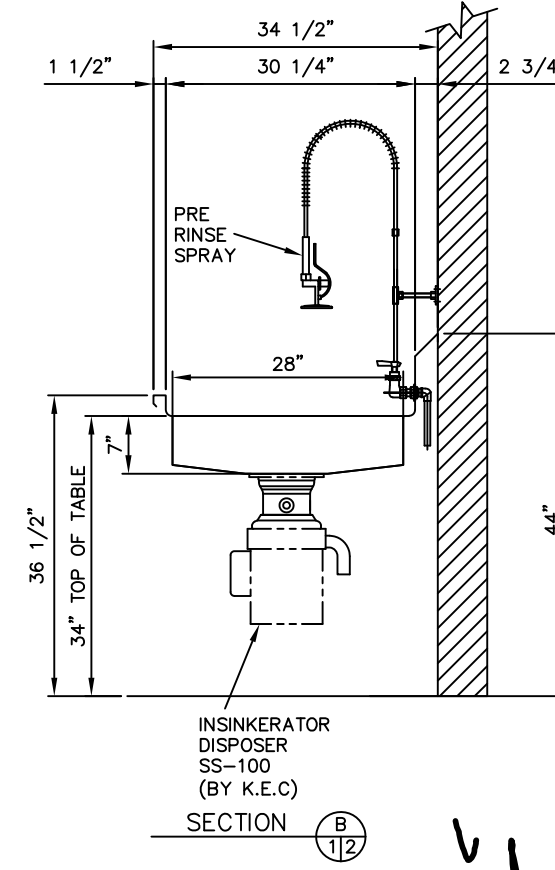
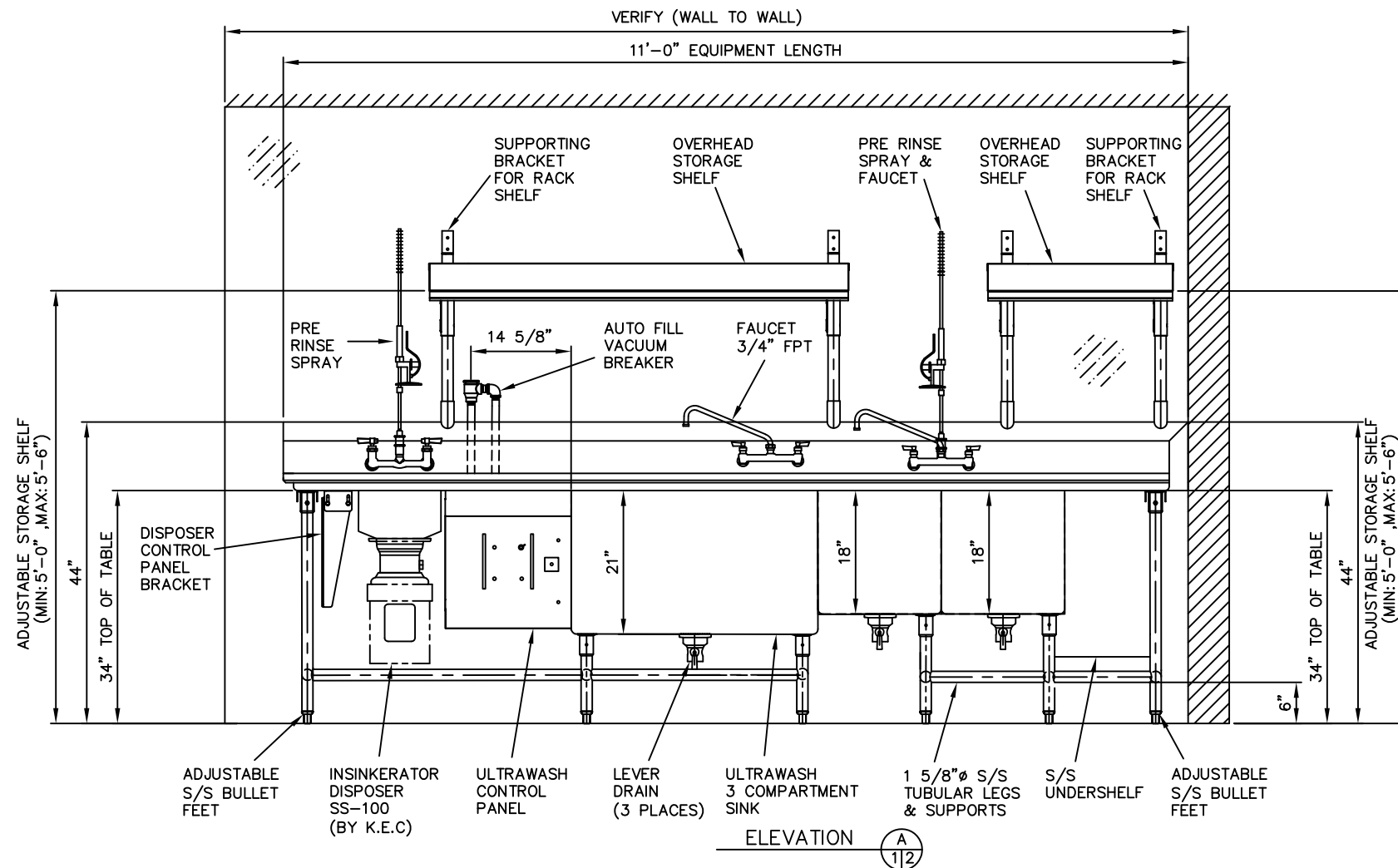
NOTES:

1. K.E.C. TO SHIP DISPOSER COLLAR #6 TO AEROWERKS FOR WELDING IN SHOP.



ALL IDEAS, DESIGNS, PLANS AND ARRANGEMENTS INDICATED BY THIS DRAWING ARE OWNED BY AND ARE THE PROPERTY OF AEROWERKS AND WERE CREATED AND DEVELOPED FOR USE ON AND IN CONNECTION WITH THE SPECIFIED PROJECT. NONE OF SUCH IDEAS, DESIGNS, PLANS OR ARRANGEMENTS SHALL BE USED BY OR DISCLOSED TO ANY PERSON, CORPORATION OR FIRM FOR ANY PURPOSE WHATSOEVER WITHOUT THE WRITTEN PERMISSION OF AEROWERKS.

B	11/29/24	GENERAL REVISIONS	P.B.
A	11/12/24	PROPOSAL WAS P243913 01A ISSUED FOR APPROVAL	P.B.
REVISION	MM/DD/YY	DESCRIPTION	BY
<div><div>AEROWERKS</div><div>6625 Millcreek Drive, Mississauga, Ontario L5N 5M4 Tel: (905) 363-6999 Fax: (905) 363-6998</div></div>			
CONSULTANT:		MODEL: <div>UW</div>	
JOB NAME:MANOR INDEPENDENT SCHOOL DISTRICT BLUEBONNET TRIAL ELEMENTARY ,AUSTIN ,TX			
TITLE:ULTRAWASH SINK PLAN VIEW			
SCALE: 1" = 1'-0"	DRAWN BY: P.B.		DATE:11/12/24
MATERIAL:	CHECKED BY: SUSHANT		S1
OLD J#:	SIZE:	DRAWING NO.	SHEET: REV.
	D	J244960	01 B

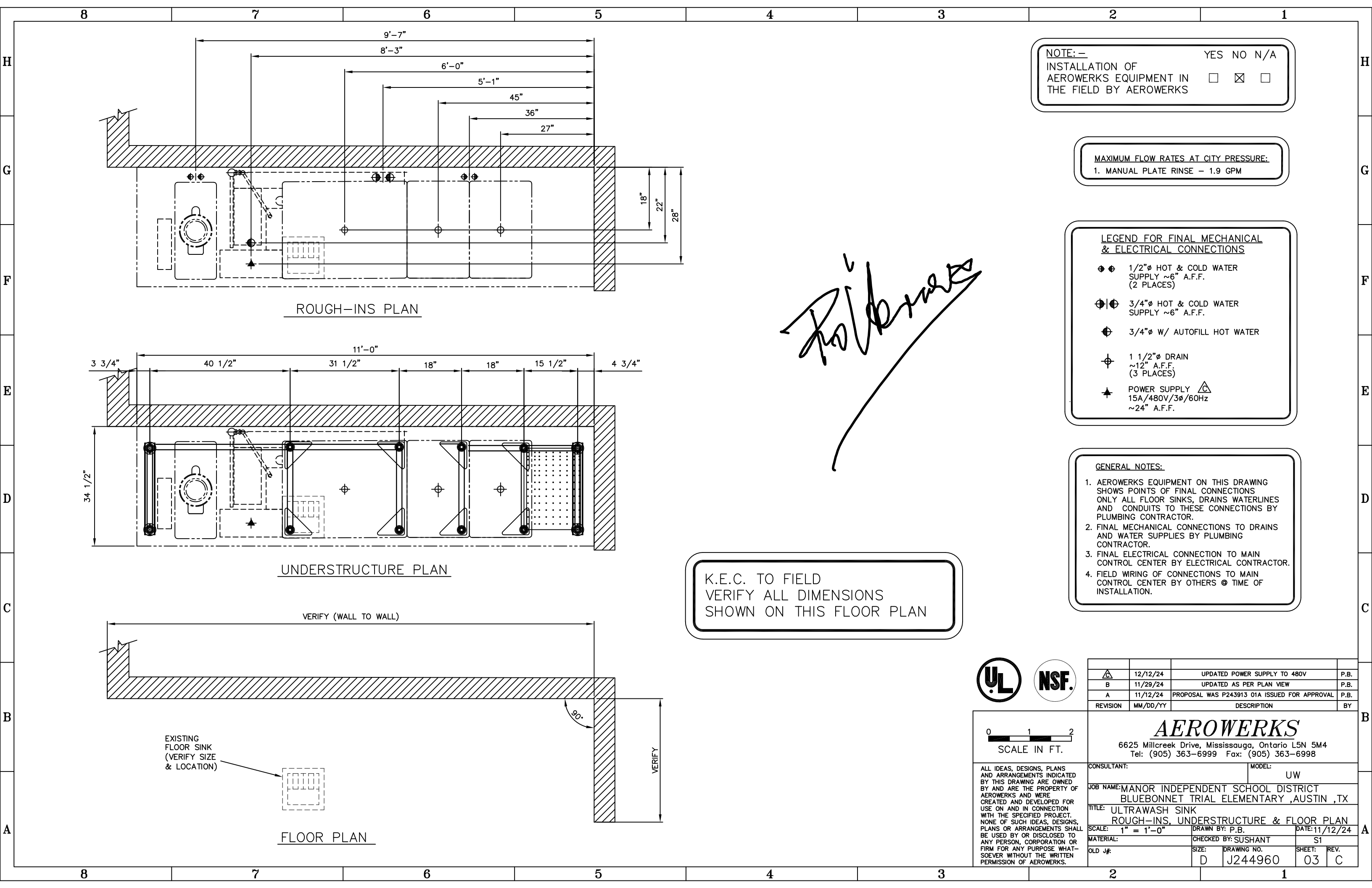


0 1 2
SCALE IN FT.

ALL IDEAS, DESIGNS, PLANS AND ARRANGEMENTS INDICATED BY THIS DRAWING ARE OWNED BY AND ARE THE PROPERTY OF AEROWERKS AND WERE CREATED AND DEVELOPED FOR USE ON AND IN CONNECTION WITH THE SPECIFIED PROJECT. NONE OF SUCH IDEAS, DESIGNS, PLANS OR ARRANGEMENTS SHALL BE USED BY OR DISCLOSED TO ANY PERSON, CORPORATION OR FIRM FOR ANY PURPOSE WHATSOEVER WITHOUT THE WRITTEN PERMISSION OF AEROWERKS.

B	11/29/24	UPDATED AS PER PLAN VIEW	P.B.
A	11/12/24	PROPOSAL WAS P243913 01A ISSUED FOR APPROVAL	P.B.
REVISION	MM/DD/YY	DESCRIPTION	BY
<div><i>AEROWERKS</i></div> <div>6625 Millcreek Drive, Mississauga, Ontario L5N 5M4 Tel: (905) 363-6999 Fax: (905) 363-6998</div>			
CONSULTANT:		MODEL: <div>UW</div>	
JOB NAME: MANOR INDEPENDENT SCHOOL DISTRICT BLUEBONNET TRIAL ELEMENTARY ,AUSTIN ,TX			
TITLE: ULTRAWASH SINK ELEVATION & CROSS SECTIONS			
SCALE: 1" = 1'-0"	DRAWN BY: P.B.		DATE: 11/12/24
MATERIAL:	CHECKED BY: SUSHANT		S1
OLD J#:	SIZE: D	DRAWING NO. J244960	SHEET: 02 REV. B

Handwritten signature: P. B.



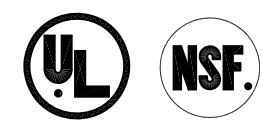
NOTE: — YES NO N/A
INSTALLATION OF AEROWERKS EQUIPMENT IN THE FIELD BY AEROWERKS ☐ ☒ ☐

MAXIMUM FLOW RATES AT CITY PRESSURE:
1. MANUAL PLATE RINSE — 1.9 GPM

- LEGEND FOR FINAL MECHANICAL & ELECTRICAL CONNECTIONS
- 1/2"Ø HOT & COLD WATER SUPPLY ~6" A.F.F. (2 PLACES)
 - 3/4"Ø HOT & COLD WATER SUPPLY ~6" A.F.F.
 - 3/4"Ø W/ AUTOFILL HOT WATER
 - 1 1/2"Ø DRAIN ~12" A.F.F. (3 PLACES)
 - POWER SUPPLY 15A/480V/3Ø/60Hz ~24" A.F.F.

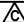
- GENERAL NOTES:
- AEROWERKS EQUIPMENT ON THIS DRAWING SHOWS POINTS OF FINAL CONNECTIONS ONLY ALL FLOOR SINKS, DRAINS WATERLINES AND CONDUITS TO THESE CONNECTIONS BY PLUMBING CONTRACTOR.
 - FINAL MECHANICAL CONNECTIONS TO DRAINS AND WATER SUPPLIES BY PLUMBING CONTRACTOR.
 - FINAL ELECTRICAL CONNECTION TO MAIN CONTROL CENTER BY ELECTRICAL CONTRACTOR.
 - FIELD WIRING OF CONNECTIONS TO MAIN CONTROL CENTER BY OTHERS @ TIME OF INSTALLATION.

K.E.C. TO FIELD
VERIFY ALL DIMENSIONS
SHOWN ON THIS FLOOR PLAN



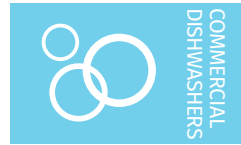
0 1 2
SCALE IN FT.

ALL IDEAS, DESIGNS, PLANS AND ARRANGEMENTS INDICATED BY THIS DRAWING ARE OWNED BY AND ARE THE PROPERTY OF AEROWERKS AND WERE CREATED AND DEVELOPED FOR USE ON AND IN CONNECTION WITH THE SPECIFIED PROJECT. NONE OF SUCH IDEAS, DESIGNS, PLANS OR ARRANGEMENTS SHALL BE USED BY OR DISCLOSED TO ANY PERSON, CORPORATION OR FIRM FOR ANY PURPOSE WHATSOEVER WITHOUT THE WRITTEN PERMISSION OF AEROWERKS.

	12/12/24	UPDATED POWER SUPPLY TO 480V	P.B.
B	11/29/24	UPDATED AS PER PLAN VIEW	P.B.
A	11/12/24	PROPOSAL WAS P243913 01A ISSUED FOR APPROVAL	P.B.
REVISION	MM/DD/YY	DESCRIPTION	BY
<div><div>AEROWERKS</div><div>6625 Millcreek Drive, Mississauga, Ontario L5N 5M4 Tel: (905) 363-6999 Fax: (905) 363-6998</div></div>			
CONSULTANT:		MODEL: UW	
JOB NAME: MANOR INDEPENDENT SCHOOL DISTRICT BLUEBONNET TRIAL ELEMENTARY ,AUSTIN ,TX			
TITLE: ULTRAWASH SINK ROUGH-INS, UNDERSTRUCTURE & FLOOR PLAN			
SCALE: 1" = 1'-0"		DRAWN BY: P.B.	
DATE: 11/12/24			
MATERIAL:		CHECKED BY: SUSHANT S1	
OLD J#:		SIZE: D DRAWING NO. J244960 SHEET: 03 REV. C	



Project _____
AIA # _____ SIS # _____
Item # _____ Quantity _____ C.S.I. Section 114000



AM16VLT-BAS TALL BASE ELECTRIC High Temperature Ventless Door-Style Dishwashing Machine



SPECIFIER STATEMENT

Specified unit will be a Hobart AM16 Tall Base electric high temperature ventless dishwashing machine. Features include 3-sided pillarless hood, ventless operation & energy recovery, door lock, touchscreen controls with WiFi connectivity, NSF pot and pan rating for 2-, 4- & 6-minute cycles, 27" door opening, pumped drain, auto door start with auto fill, interchangeable stainless steel rinse arms and X-shaped wash arms, delime cycle, advanced diagnostics and service connection, up to 40 racks per hour, .67 U.S. gallons per rack pumped final rinse.

1 year parts and labor warranty.

STANDARD FEATURES

- + .67 gallons per rack pumped final rinse
- + 40 racks per hour – hot water sanitizing
- + Ventless energy recovery
- + User-friendly smart touchscreen controls
- + WiFi connectivity
- + SmartConnect app and cloud with machine status, temperature logs, error code reporting, and cost, consumption and usage analysis
- + Two stage filtration
- + Pillarless opening
- + 3-sided hood
- + Single point electrical connection standard, field convertible to dual point connection
- + 3 phase standard, field convertible to single phase
- + Temperature and chemical lock outs (with Hobart equipped chemical pumps)
- + Pumped drain
- + Door lock
- + Timed wash cycles for 1, 2, 4 or 6 minutes
- + NSF pot and pan rating for 2-, 4- & 6- minute cycles
- + Sense-A-Temp™ 70°F rise electric booster heater
- + Self-draining, high efficiency wash pump with stainless steel impeller
- + 27" door opening for 18" x 26" sheet pans or 60-quart mixing bowl
- + Stainless steel drawn tank, tank shelf, chamber, trim panels, frame and feet
- + Spring counterbalanced chamber with UHMW guides
- + X-shaped revolving, interchangeable upper and lower anticlogging wash arms
- + Revolving, interchangeable upper and lower rinse arms
- + Slanted, self-locating, one-piece scrap screen and basket system
- + Automatic fill
- + Door actuated start
- + AutoClean
- + Factory startup
- + Service diagnostics
- + Straight-through or corner installation
- + Delime cycle with notification (field activated)
- + Sheet pan rack

OPTIONS & ACCESSORIES (Available at extra cost)

- ☐ Peg, combination and wine rack
- ☐ Chemical pumps
- ☐ Splash shield for corner installations
- ☐ Flanged and seismic feet
- ☐ Water hammer arrestor kit
- ☐ Rapid fill kit
- ☐ Sink integration kit
 - Sink saddle & 3" leg extension
 - Sink rail kit
 - Fold down table
- ☐ Drain water tempering kit
- ☐ Prison package
- ☐ Marine package
- ☐ Pumped drain air gap kit

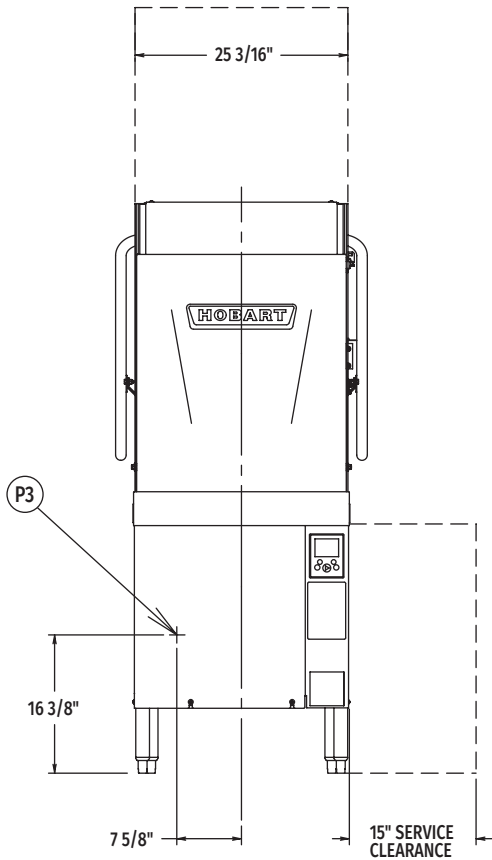
AM16 SERIES – AM16VLT-BAS TALL BASE ELECTRIC VENTLESS

Approved by _____ Date _____ Approved by _____ Date _____

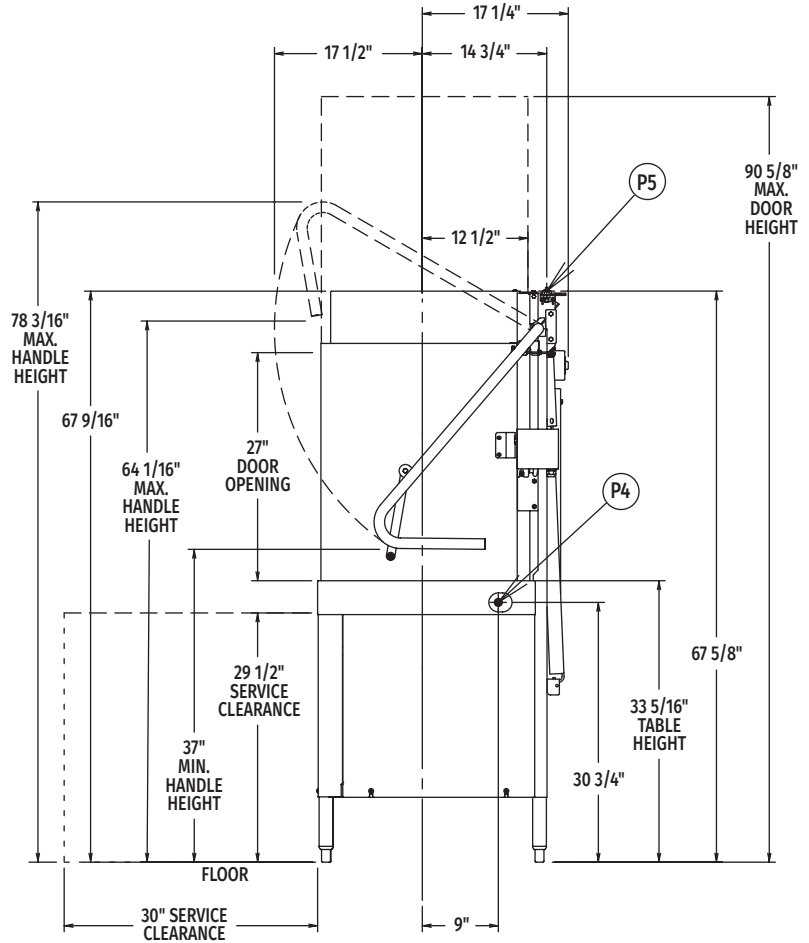


AM16VLT-BAS TALL BASE ELECTRIC

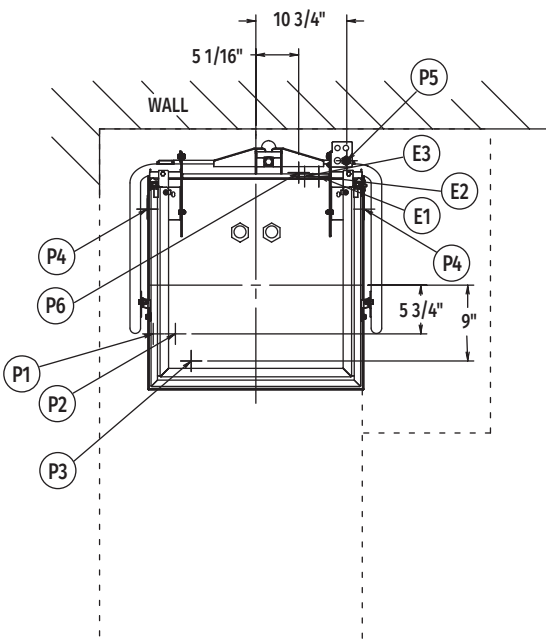
High Temperature Ventless
Door-Style Dishwashing Machine



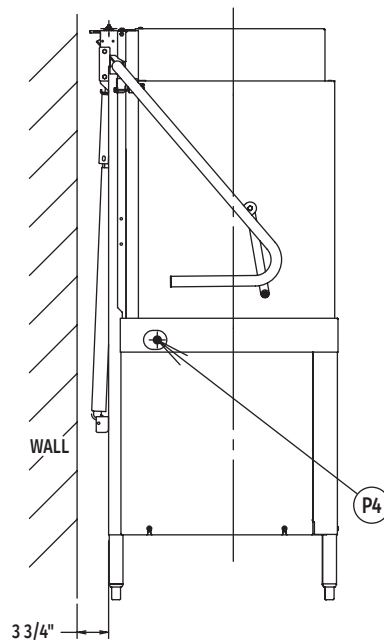
Front View



Right Side View



Top View



Left Side View

MODEL:
AM16VLT-BAS
E-950440

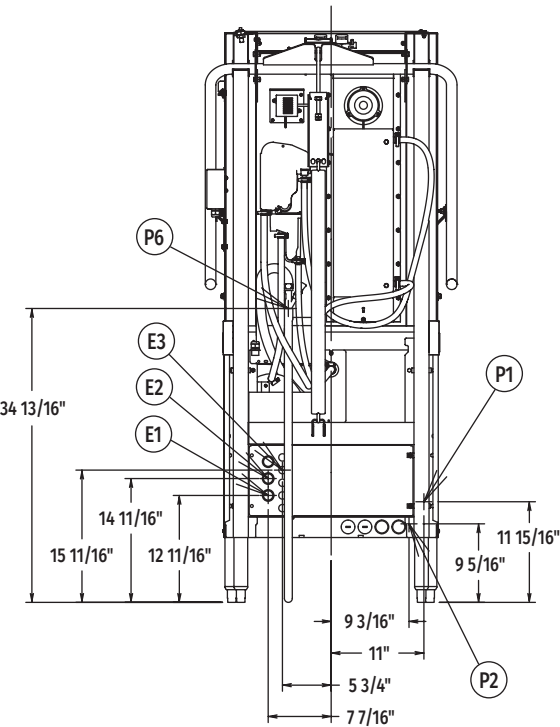


AM16VLT-BAS TALL BASE ELECTRIC

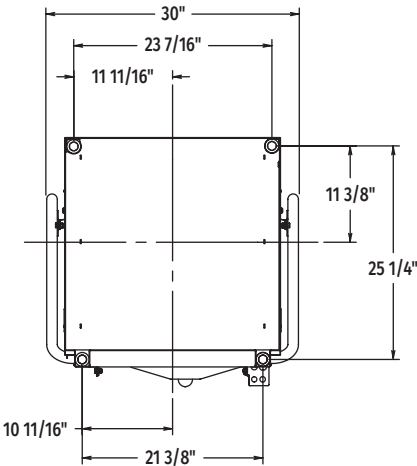
High Temperature Ventless
Door-Style Dishwashing Machine

WARNING: Electrical and grounding connections must comply with the applicable portion of the National Electrical Code and/or other local electrical codes.

Plumbing connections must comply with applicable sanitary, safety, and plumbing codes.



Rear View



Bottom View

LEGEND

Electrical Connections	
E1	Electrical connection: wash pump motor & sump heater, 1" or 3/4" conduit hole; 12-11/16" AFF.
E2	Electrical connection: electric booster & controls only or single point electrical connection (3PH only), 1" or 3/4" conduit hole; 14-11/16" AFF.
E3	Electrical connection: detergent & rinse agent feeders, (DPS1 & DPS2) 1.5 amps @ nameplate supply voltage, (RPS1 & RPS2) 1.5 amps @ nameplate supply voltage; 1/2" conduit hole, 15-11/16" AFF.
Plumbing Connections	
P1	Common water connection including booster heater: 55°F water minimum; 15-65 PSI recommended; 3/4" female garden hose fitting on 6' long hose supplied with machine; 11-15/16".
P2	Optional – hot water connection: 110°F water minimum (rapid fill accessory - when ordered); 3/4" female garden hose fitting on 6' long hose; 9-5/16" AFF.
P3	Detergent probe sensor: remove cap and stud assembly to access 7/8" hole; 16-3/8" AFF.
P4	Detergent feeder: two locations available. Remove cap and stud assembly to access 7/8" hole; 30-3/4" AFF.
P5	Rinse agent feeder: remove 1/8" NPT pipe plug to access 1/8" NPT tapped hole; 67-5/8" AFF.
P6	Drain connection: 5/8" barb fitting with 6' long hose supplied with machine; 34-13/16" AFF. Maximum height 40" AFF.

SPECIFICATIONS

Capacities

Racks Per Hour (maximum)	40
Dishes per Hour (average 25 per rack)	1,000
Glasses per Hour (average 45 per rack)	1,800
Wash Tank (U.S. gallons)	10.5

Motor Horsepower

Rinse Pump	0.18
Wash Pump	2
Drain Pump	0.21
Blower	0.05

Rinse

Gallons per Rack	0.67
Gallons per Hour (maximum consumption)	26.8

Peak Rate of Drain Flow

Gallons per Minute (initial rate with full tank)	18.5
--	------

Heating

Electric Booster (kW)	7.1
Electric Heating Unit (kW)	5.4

Shipping Weight (approximate) 372 lbs.

Crated Dimensions 73.75"H x 36.5"W x 36.5"L



AM16VLT-BAS TALL BASE ELECTRIC

High Temperature Ventless
Door-Style Dishwashing Machine

E1	AM16 with Electric Heat (When Field Converted to Dual Point)		
	Voltage	Rated Amps	Minimum Supply Circuit Ampacity Maximum Protective Device
	208-240/60/1	39.6	50
	208-240/60/3	26.9	30
	480/60/3	10.5	15

E2	Booster & Controls Ampacity Ratings (When Field Converted to Dual Point)		
	Voltage	Rated Amps	Minimum Supply Circuit Ampacity Maximum Protective Device
	208-240/60/1	43.5	50
	208-240/60/3	26.8	30
	480/60/3	13.5	15

E2	AM16 Single Point Electrical Service Connection as Shown Below		
	Voltage	Rated Amps	Minimum Supply Circuit Ampacity Maximum Protective Device
	208-240/60/3	53.7	60
	480/60/3	24.0	30

Approximate Heat Gain to Space without Vent Hood	
Type	BTU/Hr.
Latent	6,800
Sensible	5,000

Miscellaneous Notes: All dimensions taken from floor line may increase 7/8" or decrease 3/8" depending on leg adjustment.

Vent hood (if required) to provide a minimum 450 CFM exhaust (ref installation instructions).

Net weight of machine including booster: 355 lbs.

Domestic shipping weight including booster: 375 lbs.

Size of racks – 19³/₄" x 19³/₄".

Backflow prevention provided by NSF-approved air gap device.

Plumbing Notes: Water hammer arrestor (meeting ASSE-1010 standard or equivalent) to be supplied (by others) in common water supply line at service connection.

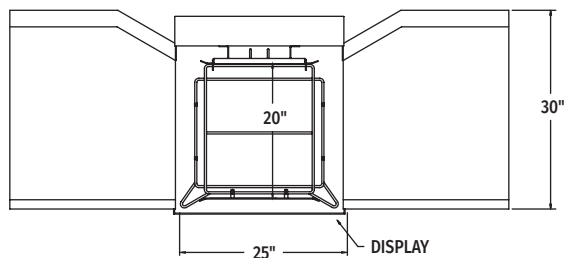
Recommended water hardness to be 3 grains or less for best results.

Note: Electric heating unit & booster (kW) calculated at 208V. Recommended building flowing water pressure to the dishwasher at or above 20PSI. Pressures lower than 20 PSI may affect machine fill/start-up times.

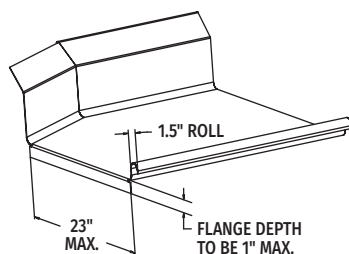
This is a pumped rinse machine. Pressure regulating valve is not necessary on hot or cold lines.

For convenience when cleaning, water tap should be installed near machine with heavy duty hose and squeeze valve.

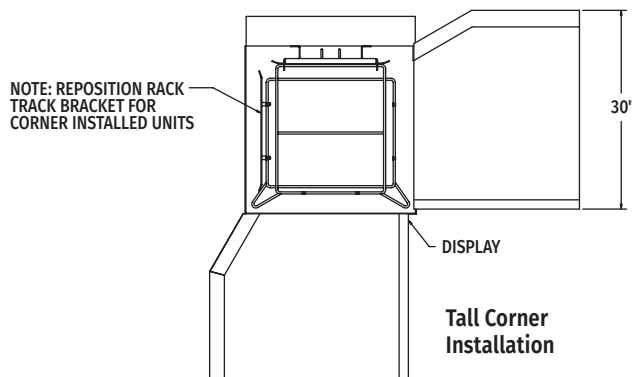
AM16VLT-BAS TABLING CONFIGURATIONS AND TRACK DESIGN



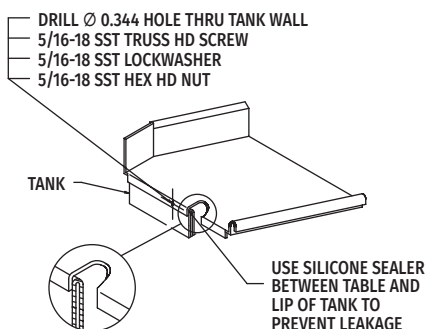
Pass Thru Installation



Suggested Table Design



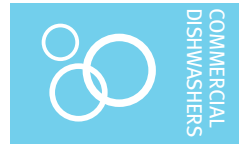
Tall Corner Installation



As continued product improvement is a policy of Hobart, specifications are subject to change without notice.



Project _____
AIA # _____ SIS # _____
Item # _____ Quantity _____ C.S.I. Section 114000



CL44-BAS ELECTRIC

High Temperature Rack Conveyor Dishwashing Machine



SPECIFIER STATEMENT

Specified dishwasher will be Hobart CL44 Base electric tank heat model. Features include Complete Delime™ with Delime Notification, Auto Dispensing and Booster Guard™, capless anti-clogging wash arms, 202 racks per hour, 90 gallons per hour pumped final rinse, ENERGY STAR®, insulated ergonomic cabinet style doors, touchscreen controls with WiFi connectivity, and NSF approved pot and pan cycle mode. The 19.5" standard chamber height will accommodate up to (6) standard sheet pans at a time on an open-end sheet pan rack.

STANDARD FEATURES

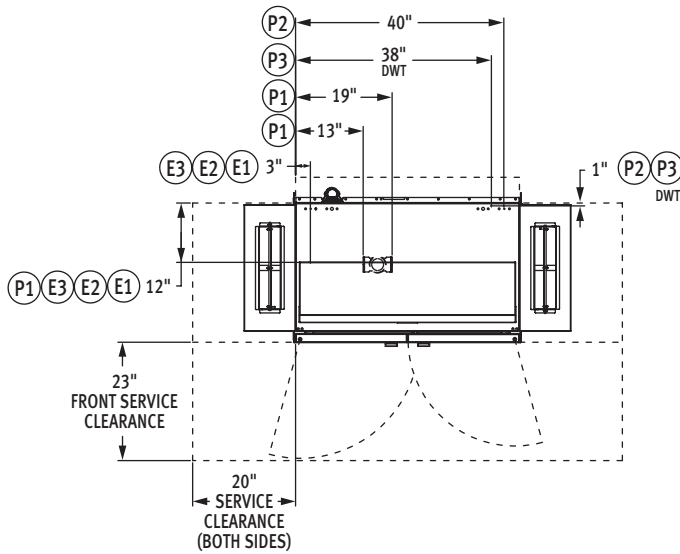
- + 90 gallons per hour pumped final rinse
- + 202 racks per hour
- + ENERGY STAR® Certified
- + Complete Delime™ with Delime Notification, Auto Dispensing and Booster Guard™
- + Internal stainless steel pressure-less 18 kW booster heater (70°F rise)
 - Single point electrical connection standard
- + Capless, anti-clogging wash arms
- + Self-aligning wash manifolds
- + Large double door opening for ease of cleaning
- + 19.5" chamber height opening (accepts sheet pans)
- + Doors are insulated & hinged with door interlock switches
- + User-friendly smart touchscreen controls with diagnostics & troubleshooting
- + WiFi connectivity
- + SmartConnect app with machine status, temperature logs, error code reporting, and cost, consumption and usage analysis
- + Energy saver mode (programmable auto-shut down)
- + NSF rated configurable pot and pan cycle
- + Stainless steel self-draining pump and impeller
- + Single, sloping scrap screen and deep scrap basket
- + Rapid return conveyor drive mechanism
- + Service diagnostics
- + Door actuated drain closure
- + Vent fan control
- + Convertible hot water or low temperature final rinse
- + Booster heater control

OPTIONS & ACCESSORIES (Available at extra cost)

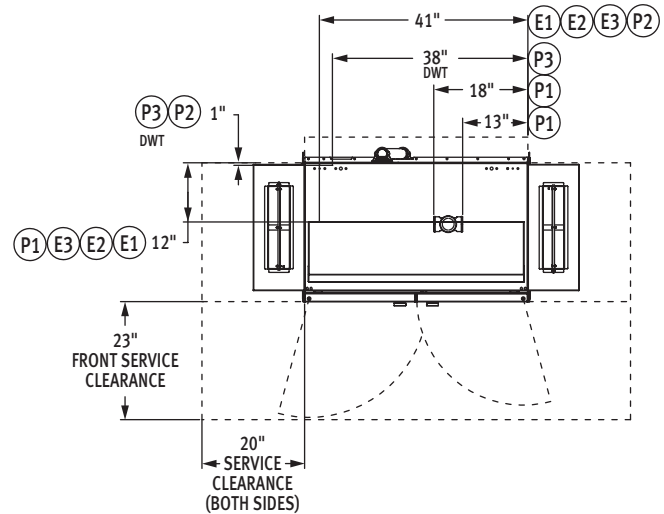
- ☐ Standard, short and extended stainless steel vent hoods
- ☐ Non-booster
- ☐ Direct drive unloader – adds 38" length; Reference spec F48944 for more details
- ☐ Side loader – SL23 adds 23" length, SL30 adds 30" length; Reference specs F40926 and F40927 for more details
- ☐ Blower-dryer – adds 33 1/4" to length; Reference spec F48945 (electric blower-dryer) and F48950 (steam blower-dryer) for more details (ships separate from dishmachine, contact Hobart Service for installation)
- ☐ Drain water tempering kit
- ☐ Flanged feet kit (requires two kits)
- ☐ Higher than standard chamber (24" opening)
- ☐ Table limit switch with 20' cable
- ☐ Correctional package (factory installed, contact Hobart for details)
- ☐ Water hammer arrester
- ☐ Factory-mounted circuit breakers (contact Hobart for details)

CL SERIES – CL44-BAS ELECTRIC

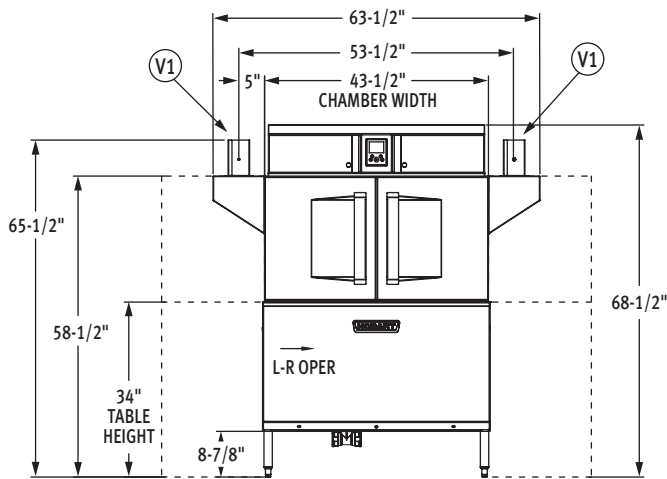
Approved by _____ Date _____ Approved by _____ Date _____



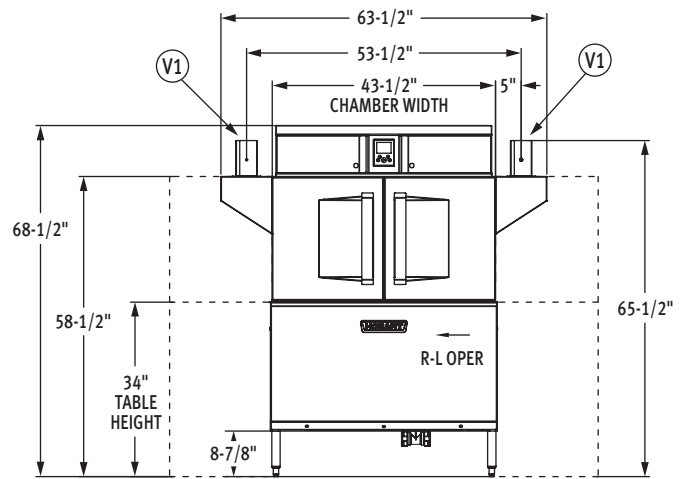
Top View Left to Right Machine



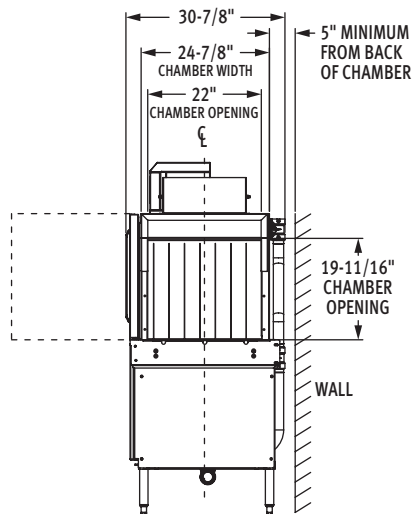
Top View Right to Left Machine



Front View Left to Right Machine



Front View Right to Left Machine



Side View



CL44-BAS ELECTRIC

High Temperature Rack Conveyor Dishwashing Machine

LEGEND

Electrical Connections	
SINGLE POINT CONNECTION	
E1	Electric connection, single point: motors, controls, tank heat, with 18 kW electric booster heater, 65" AFF.
DUAL POINT CONNECTION WITH BOOSTER	
E2	Electric connection: motors, tank heat, 62" AFF.
E3	Electric connection: controls, 18kW booster heater, 65" AFF.
Plumbing Connections	
P1	Drain: 2" FPT, 7-3/8" AFF, two possible connections; may be drained to either side of drain housing, plug opposite side.
P2	Common hot water connection: 1/2" FPT, 12" AFF. See plumbing notes for required temperatures.
P3	Optional drain water tempering. Cold water connection: 1/2" FPT, 12" AFF, cold temperature 80°F maximum.
Vent Connections	
V1	Optional vent hoods: 4" x 16" vent stack with damper. Load end 200 CFM, unload end 400 CFM.

SPECIFICATIONS

Capacities

Racks per Hour (NSF rated)	202
Wash Tank (U.S. gallons)	23
Conveyor Speed (feet per minute)	5.6

Motor Horsepower

Drive	1/6
Wash	2
Final Rinse	2/3

Water Consumption

U.S. Gallons per Hour	90
U.S. Gallons per Rack	0.45
Peak Drain Flow (U.S. gallons per minute)	38

Heating

Tank Heat, Electric (kW)	15
Electric Booster (built-in) (kW for 70°F rise)	18
Electric Booster (field conversion) (kW for 40°F rise)	12

Venting

Load End (minimum CFM)	200
Unload End (minimum CFM)	400

Shipping Weight (approximate) 600 lbs.

Crated Dimensions 53"L x 38"W x 79"H

E1	Single Point Electrical Connection with Internal Booster	
Voltage	(E1) Motors, Controls, Tank Heat, 18 kW Booster Heater	
	Rated Amps	Minimum Supply Circuit Ampacity/ Maximum Protective Device
208/60/3	109.6	150
240/60/3	99.9	125
480/60/3	51.7	60
600/60/3	39.1	50

E2	Dual Point Electrical Connection with Internal Booster (Field Conversion Only)			
E3	(E2) Motors, Tank Heat		(E3) Controls, 18 kW Booster Heater	
Voltage	Rated Amps	Minimum Supply Circuit Ampacity/ Maximum Protective Device	Rated Amps	Minimum Supply Circuit Ampacity/ Maximum Protective Device
208/60/3	51.1	70	58.5	80
240/60/3	48.1	60	51.8	70
480/60/3	24.5	30	27.2	35
600/60/3	16.7	20	22.4	30

WARNING: Electrical and grounding connections must comply with the applicable portions of the National Electrical Code and/or other local electrical codes.

CAUTION: Certain materials including silver, aluminum, and pewter are attacked by sodium hypochlorite (liquid bleach).

ATTN: Plumbing connections must comply with applicable sanitary, safety and plumbing codes.



CL44-BAS ELECTRIC

High Temperature Rack Conveyor Dishwashing Machine

Plumbing Notes: Water hammer arrestor (meeting ASSE-1010 standard or equivalent) to be supplied (by others) in common water supply line at service connection.

Recommended water hardness to be 3 grains or less for best results.

Minimum incoming hot water temperatures:

110°F for 18kW internal booster

140°F for 12kW field converted internal booster

180°F without internal booster for high temperature sanitizing, 130°F for chemical sanitizing.

Building flowing water pressure to dish machine is 20 to 65 PSI at the machine.

For convenience when cleaning, water tap should be installed near machine with heavy duty hose and squeeze valve.

For chemical sanitizing applications, feeder must be certified to NSF Standard 29.

Miscellaneous Notes: All dimensions taken from floor line may be increased approximately 3/4" or decreased 1/2".

For HTS, add 4-5/16" to all dimensions above table line.

For HTS, add 15 lbs. to the domestic shipping weight of each model.

Electrical Note: Dishmachine not provided with internal GFCI protection.

CL44-BAS Electric Heat Dissipation		
Booster	BTU/HR.	
	Latent	Sensible
Without Booster	18,500	7,900
12kW Booster	26,600	11,400
18kW Booster	32,100	13,700

NOTE: 18kW Booster Heater field convertible to 12kW when 140°F incoming water provided. (Conversion instructions located in machine control box. Contact factory for 12kW booster amperage ratings.)

NOTE: Additional Voltages and Amperages are available, see document F48913.

VENT HOOD OPTIONS (Adjustable, vent stack can be adjusted 1" to either side)

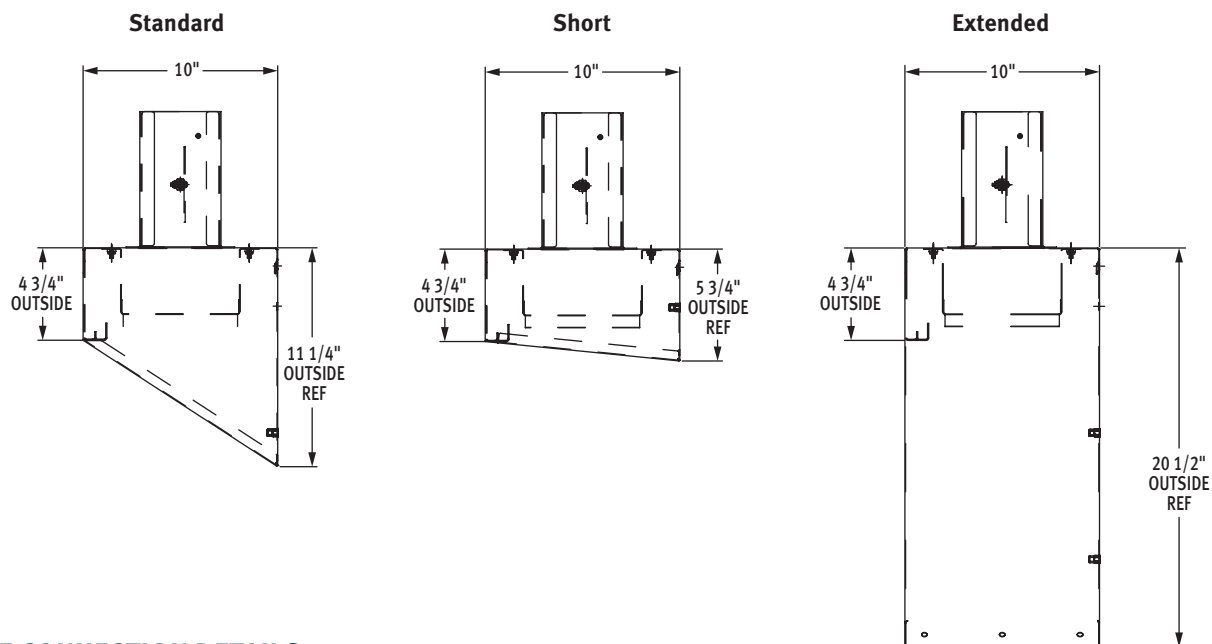
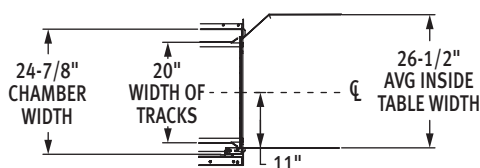
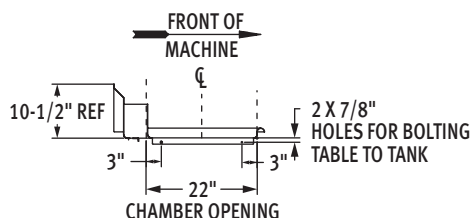


TABLE CONNECTION DETAILS

Tabling Connection: 44" inside tank (at table connection)



Suggested Track and Table Layout



View Showing Hole Locations in Turned Down Portion of Table



Sectional View Showing Table Connections

As continued product improvement is a policy of Hobart, specifications are subject to change without notice.



SS SERIES FOOD WASTE DISPOSERS

Food waste disposers are a hygienic and environmentally sustainable way to manage pre- and post-consumer scraps in a foodservice establishment. The SS Series disposers are ideal for heavy-duty applications such as restaurants, schools and universities, healthcare facilities and hospitals, and government facilities.

PRODUCT FEATURES & SPECIFICATIONS

SS-SERIES

- Whether you serve 25 or 2,500 people, there is an InSinkErator disposer that's designed for your operation. From the small-capacity SS-100™ model to our large-capacity SS-1000™ workhorse, InSinkErator disposers deliver superior performance, quiet operation, maximum energy efficiency, and reliable service.

SYSTEM OVERVIEW

- Stainless steel and chrome-plated finish
- Corrosion-resistant, stainless steel grind chamber
- Heavy-duty induction motor with built-in thermal overload protection
- Enclosure provides protection against outside moisture with controlled power air flow to cool motor
- Cast-nickel, chrome-alloy stationary and rotating shredding elements
- Double-tapered Timken roller bearings provide a shock-absorbing cushion
- Triple lip seal protects motor from water damage
- Secondary spring-loaded oil seal provides double protection against water and loss of grease

CLEANING

- Disposers are easy to clean and maintain
- Wipe down exterior surfaces with a wet cloth
- Use warm soapy water on the splashguard



1
YEAR

ON-SITE
PARTS & LABOR
WARRANTY

Commercial Disposer Sizing Chart

To determine the proper size disposer, use this recommended sizing chart. Sizing recommendations are given in general terms; actual capacities vary depending on the volume and type of food waste.

Volume Processed / Application		High Buffet/Cafeteria Government	Medium Full Service Restaurant	Low Limited Service Restaurant/Cafe/ Fast Casual		
Food Waste Composition	Light Majority Fruits & Vegetables	SS-300	SS-300/ SS-500	SS-500	SS-500/ SS-1000	
	Medium 50/50 Mixture	SS-200	SS-300	SS-300/ SS-500	SS-500	SS-500/ SS-1000
	Heavy Majority Meats & Seafood	SS-100	SS-200	SS-300	SS-300/ SS-500	SS-1000
		SS-100	SS-100	SS-200	SS-300	SS-300/ SS-500

A complete collection of our product drawings is available for download at the **InSinkErator Revit/CAD Library**, which can be found at www.insinkerator.com/foodservice. Product information is also accessible on **The KCL CADalog**. More information is available from KCL at www.kclcad.com.



4700 21st STREET
RACINE, WI 53406
TEL: 800-845-8345
FAX: 262 554-3620

www.insinkerator.com/foodservice






The Emerson logo is a trademark and a service mark of Emerson Electric Co.







WHAT'S INCLUDED

- Base disposer: 1 mounting gasket
- Disposer packages: 1 mounting/bowl assembly, 1 electrical control, 1 syphon breaker, 1 solenoid valve, and 1 flow control valve (the standard flow control valve will be sent with the unit unless the optional valve is specified)






MODEL & HORSEPOWER/ELECTRICAL REQUIREMENTS (CHOOSE ONE)

Small Capacity Disposers		
	<input type="checkbox"/> SS-100 1 HP	<input type="checkbox"/> 115/208-230V, 60 Hz, 1 Ph, 11.6/5.1/5.7 amps, cULus <input type="checkbox"/> 208-230/460V, 60 Hz, 3 Ph, 2.0/2.4/1.2 amps, cULus <input type="checkbox"/> 120/208-240V, 60 Hz, 1 Ph, 11.6/5.1/5.7 amps, NOM <input type="checkbox"/> 100/200-230V, 50/60 Hz, 1 Ph, 10.4/5.2/5.4 amps
	Water Usage:	<input type="checkbox"/> 5 GPM (18.9 LPM) standard water flow <input type="checkbox"/> 3 GPM (11.4 LPM) reduced water flow (optional)
Medium Capacity Disposer		
	<input type="checkbox"/> SS-200 2 HP	<input type="checkbox"/> 115/208-230V, 60 Hz, 1 Ph, 17.4/7.7/8.7 amps, cULus <input type="checkbox"/> 208-230/460V, 60 Hz, 3 Ph, 3.6/4.4/2.2 amps, cULus <input type="checkbox"/> 115/208-230V, 60 Hz, 1 Ph, 17.4/7.7/8.7 amps, cULus, short body <input type="checkbox"/> 208-230/460V, 60 Hz, 3 Ph, 3.6/4.4/2.2 amps, cULus, short body <input type="checkbox"/> 208-240/460V, 60 Hz, 3 Ph, 3.6/4.4/2.2 amps, NOM
	Water Usage:	<input type="checkbox"/> 7 GPM (26.5 LPM) standard water flow <input type="checkbox"/> 5 GPM (18.9 LPM) reduced water flow (optional)
Large Capacity Disposers		
	<input type="checkbox"/> SS-300 3 HP	<input type="checkbox"/> 208-230/460V, 60 Hz, 3 Ph, 6.0/7.4/3.7 amps, CUL <input type="checkbox"/> 208-230/460V, 60 Hz, 3 Ph, 6.0/7.4/3.7 amps, CUL, short body <input type="checkbox"/> 208-230/460V, 60 Hz, 3 Ph, 7.0/8.6/3.7 amps, NOM <input type="checkbox"/> 415V, 50 Hz, 3 Ph, 4.9 amps <input type="checkbox"/> 220V, 50 Hz, 3 Ph, 7.2 amps <input type="checkbox"/> 380V, 50/60 Hz, 3 Ph, 4.1/3.0 amps
	Water Usage:	<input type="checkbox"/> 8 GPM (30.3 LPM) standard water flow <input type="checkbox"/> 7 GPM (26.5 LPM) reduced water flow (optional)
	<input type="checkbox"/> SS-500 5 HP	<input type="checkbox"/> 208-230/460V, 60 Hz, 3 Ph, 8.6/8.8/4.4 amps, CUL <input type="checkbox"/> 208-230/460V, 60 Hz, 3 Ph, 8.6/8.8/4.4 amps, CUL, short body <input type="checkbox"/> 230/460V, 50 Hz, 3 Ph, 9.0/4.5 amps <input type="checkbox"/> 415V, 50 Hz, 3 Ph, 6.0 amps <input type="checkbox"/> 380V, 50 Hz, 3 Ph, 8.9 amps
	Water Usage:	<input type="checkbox"/> 8 GPM (30.3 LPM) standard water flow <input type="checkbox"/> 7 GPM (26.5 LPM) reduced water flow (optional)
	<input type="checkbox"/> SS-1000 10 HP	<input type="checkbox"/> 208-230/460V, 60 Hz, 3 Ph, 11.0/13.0/6.5 amps, CUL <input type="checkbox"/> 208-230/460V, 60 Hz, 3 Ph, 11.0/13.0/6.5 amps, CUL, short body
	Water Usage:	<input type="checkbox"/> 10 GPM (37.9 LPM) standard water flow

DISPOSER MOUNTING ASSEMBLIES (CHOOSE ONE)

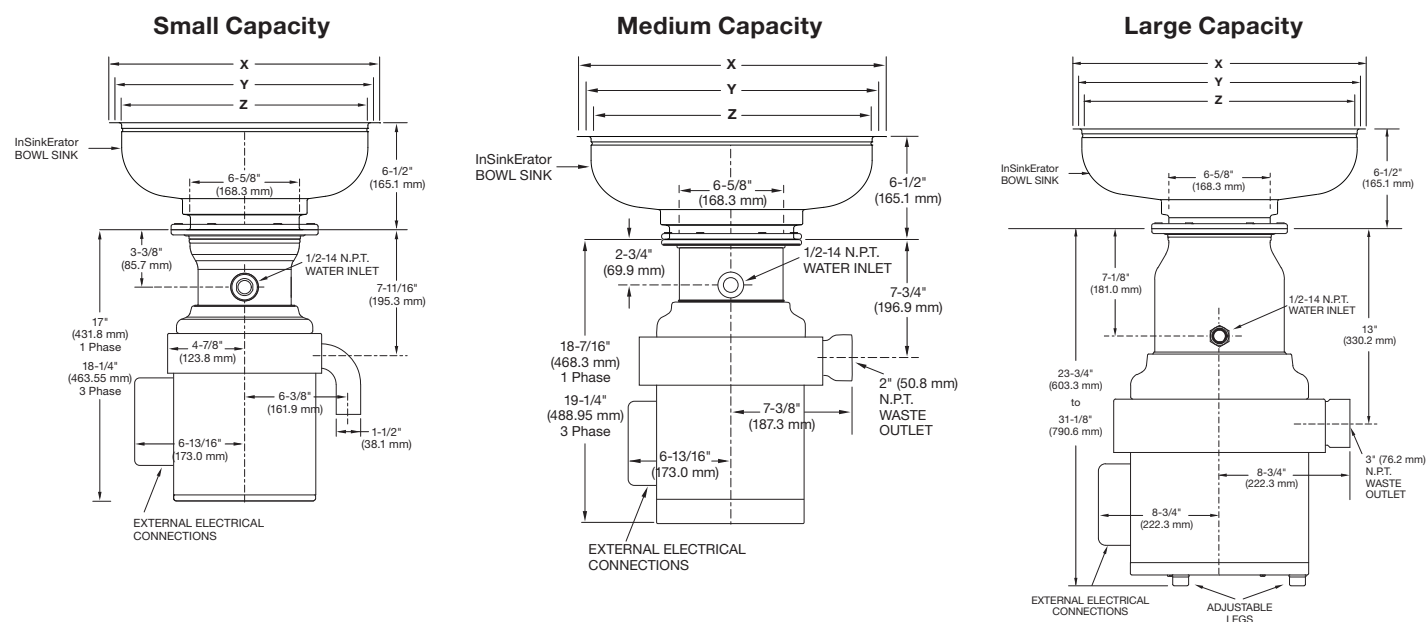
Sink Collar Mounts		Sink Bowl Mounts	
	<input type="checkbox"/> #5 Sink Flange Kit for 3-1/2"–4" (88.9 mm–101.6 mm) sink opening (support legs are recommended) <i>#5 adaptors only available on small and medium capacity disposers.</i>	Bowl Size	Kit Type
	<input type="checkbox"/> #6 Collar Adaptor Kit for welding into trough, for 6-5/8" (168.3 mm) opening, includes splash baffle	<input type="checkbox"/> 12" (304.8 mm) with one adjustable water nozzle	 <input type="checkbox"/> Type A Sink Bowl Assembly <ul style="list-style-type: none">• bowl• water nozzle(s)• bowl cover• splash baffle
	<input type="checkbox"/> #7 Collar Adaptor Kit for welding into sink, for 6-5/8" (168.3 mm) opening, includes splash baffle and stopper	<input type="checkbox"/> 15" (381.0 mm) with one adjustable water nozzle	 <input type="checkbox"/> Type B Sink Bowl Assembly <ul style="list-style-type: none">• bowl• water nozzle(s)• silver guard• splash baffle
		<input type="checkbox"/> 18" (457.2 mm) with two adjustable water nozzles	 <input type="checkbox"/> Type C Sink Bowl Assembly <ul style="list-style-type: none">• bowl• water nozzle(s)• splash baffle

ELECTRICAL CONTROLS (CHOOSE ONE)

<input type="checkbox"/> AS-101 Control Center AquaSaver®	<input type="checkbox"/> CC-101 Control Center	<input type="checkbox"/> CC-202 Control Center	<input type="checkbox"/> Manual Reverse Switch	<input type="checkbox"/> Manual Switch
				
<ul style="list-style-type: none"> Automatically changes direction Stainless-steel housing Automatic shut-off with power loss Line disconnect Programmable post-flush Timed run Automatically regulates water flow to grind load 	<ul style="list-style-type: none"> Automatically changes direction Stainless-steel housing Automatic shut-off with power loss Line disconnect Programmable post-flush Timed run 	<ul style="list-style-type: none"> Automatically changes direction Stainless-steel housing Automatic shut-off with power loss 	<ul style="list-style-type: none"> Manually changes direction Stainless-steel housing Automatic shut-off with power loss 	<ul style="list-style-type: none"> Single direction Polycarbonate housing Automatic shut-off with power loss

DISPOSER DIMENSIONS

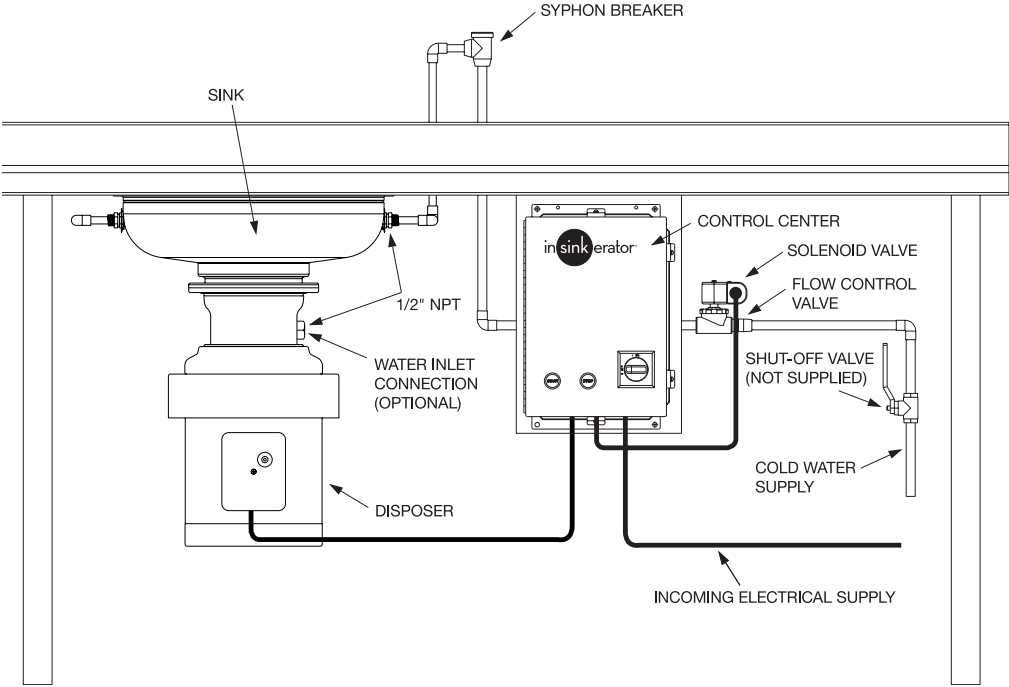
Standard models shown. A short body model is available on medium and large capacity disposers. Short body models reduce overall height by 1" (25.4 mm) on medium capacity disposers and by 3" (76.2 mm) on large capacity disposers.



If mounting directly to a sink, use dimension chart below for adaptor height in place of InSinkErator bowl sink height.
IMPORTANT: #5 adaptors only available on small and medium capacity disposers.

Bowl Mounts	Flange O.D. X	Work Table Hole Y	Flange I.D. Z	Height
12" (304.8 mm)	13-1/2" (342.9 mm)	12-1/4" (311.2 mm)	12" (304.8 mm)	6-1/2" (165.1 mm)
15" (381 mm)	16-1/2" (419.1 mm)	15-1/4" (387.4 mm)	15" (381.0 mm)	6-1/2" (165.1 mm)
18" (457.2 mm)	19-1/2" (495.3 mm)	18-1/4" (463.6 mm)	18" (457.2 mm)	6-1/2" (165.1 mm)
Collar Mounts	X	Y	Z	Height
#5	Fits Standard Sink Opening: 3-1/2" – 4" (88.9 mm – 101.6 mm)			2-3/4" (69.9 mm)
#6	7-13/16" (198.4 mm)	6-7/8" (174.6 mm)	6-5/8" (168.3 mm)	1-3/16" (30.2 mm)
#7	9-1/8" (231.8 mm)	7-7/8" (200.0 mm)	7-5/8" (193.7 mm)	2-1/16" (52.4 mm)

TYPICAL INSTALLATION - BOWL



REPLACING A COMPETITIVE DISPOSER

- Refer to the Mounting Adaptor Guide or Video for adaptors that fit competitor sink bowls or cones.
- Have sink bowl/cone type with appropriate dimensions available when contacting Customer Service with questions or to place an order.

SAMPLE SPECIFICATION

InSinkErator Food Waste Disposer. Food waste grinding system with _____ HP disposer, _____ control panel. _____ Volts, _____ Hz, _____ Phase operation. _____ disposer mount. Syphon breaker with 1/2" NPT connections; flow control valve; (1) 24V water solenoid.

PROJECT INFORMATION

Item Number: _____	Model Number: _____
Quantity: _____	Electrical Requirements: _____
Manufacturer: InSinkErator	_____ volts _____ phase
Project: _____	Dealer: _____
Address: _____	City/State/Zip: _____
City/State/Zip: _____	Contact: _____
Contact: _____	Phone: _____
Phone: _____	
Installer: _____	Consultant: _____
Contact: _____	Contact: _____
Phone: _____	Phone: _____



Standard Equipment Installation Quotation

Quote Created: 2/26/2025	Quote Expires: 3/28/2025
Quotation For: Manor Isd Location: Bluebonnet Trail Elementary 11316 Farmhaven Rd Austin, TX 78754-5744	Quote Prepared By: Aaron Esquivel Telephone: Email: aaron.esquivel@hobartservice.com

Service Product	Price (excludes tax)	Qty.	Total Amount (excludes tax)
Garbage Disposal Electrical	\$1,100.00	1.00000	\$1,100.00
Aerowerks Ultra Wash Electrical	\$7,600.00	1.00000	\$7,600.00
Total Quote Amount:			\$8,700.00 (excludes tax)

Statement of Work:

Hobart: Demo existing. Provide electrical modifications / upgrades per manufacturer specifications.

Included:

- New equipment must match the location's current specifications: electrical, gas lines, plumbing/drains, and venting.
- Installations completed during normal business hours. Monday – Friday; 8:00am – 5:00pm
- Schedule delivery to customer's facility
- Removal of packaging materials and rubbish

Excluded:

- Extended travel beyond 100-mile radius of the installing office
- Coordinate installation with the construction superintendent or contractor to include:
 - Electrical, plumbing, and venting connections to ensure they meet equipment specification.
- Any utility, venting, mechanical, stainless-steel, floor, hallway, doorway, wall, ceiling, and/or roof modifications/upgrades not listed in the above statement of work.
- Structural removal or replacement to make entry (walls, doors, counters, display cases, sinks, etc.)
- Wall repairs, tile, epoxy, sheet rock, wall coverings
- Ceiling obstructions and grid placement
- Other existing kitchen equipment that must be moved (and re-installed) in order to set new unit in place.
- Air Balancing and/or roof fans are not included unless quoted above in the statement of work.
- Delivery charge (if received at a location other than final destination).
- New shut off valves, pressure regulators, gas hoses, other misc. parts.
- Overtime installation requirements
- Shipping carrier hub holding fee (if job is delayed)
- Standby for store/location opening.
- Permits or tax, if applicable
- Refrigerant recovery fees, if applicable
- Union or prevailing wage labor
- CCIP or OCIP management



Please see Hobart Terms & Conditions for standard operating inclusions & exclusions.

Additional Items:

- Payment terms are Net 30.
- If there are any unusual circumstances a site visit is required, and a firm quotation will be provided for all necessary work. Unusual circumstances and exceptions to pricing outlined would include but are not limited to: restricted entryways, obstacles, architectural access restrictions, non-standard installation hours, unusual vehicle restrictions and local ordinances, etc.
- Any quotes are conditioned upon your acceptance of Hobart Service terms and conditions attached and those at www.hobartservice.com/servicetermsandconditions

Hobart may conduct a site survey at customer's facility, such site surveys are intended to identify problems which can be readily identified through reasonable visual inspection however the customer is solely responsible for the state of their facility and site including electrical and plumbing lines. During a site survey, Hobart is under no obligation to excavate, move equipment, or otherwise disassemble or remove covers, fascia, sconces, or the like. Should problems or defects be identified during the site survey or Hobart's services, customer shall remedy such problems at its own cost before Hobart is required to continue performing the services.



Standard Equipment Installation Quotation

Quote Created: 2/26/2025	Quote Expires: 3/28/2025
Quotation For: Manor Isd Location: Decker Elementary School 8500 Decker Ln Austin, TX 78724-2202	Quote Prepared By: Aaron Esquivel Telephone: Email: aaron.esquivel@hobartservice.com

Service Product	Price (excludes tax)	Qty.	Total Amount (excludes tax)
CL44EN Electrical	\$5,400.00	1.00000	\$5,400.00
Total Quote Amount:			\$5,400.00 (excludes tax)

Statement of Work:

Hobart: Demo existing. Provide electrical modifications / upgrades per manufacturer specifications.

Included:

- New equipment must match the location's current specifications: electrical, gas lines, plumbing/drains, and venting.
- Installations completed during normal business hours. Monday – Friday; 8:00am – 5:00pm
- Schedule delivery to customer's facility
- Removal of packaging materials and rubbish

Excluded:

- Extended travel beyond 100-mile radius of the installing office
- Coordinate installation with the construction superintendent or contractor to include:
 - Electrical, plumbing, and venting connections to ensure they meet equipment specification.
- Any utility, venting, mechanical, stainless-steel, floor, hallway, doorway, wall, ceiling, and/or roof modifications/upgrades not listed in the above statement of work.
- Structural removal or replacement to make entry (walls, doors, counters, display cases, sinks, etc.)
- Wall repairs, tile, epoxy, sheet rock, wall coverings
- Ceiling obstructions and grid placement
- Other existing kitchen equipment that must be moved (and re-installed) in order to set new unit in place.
- Air Balancing and/or roof fans are not included unless quoted above in the statement of work.
- Delivery charge (if received at a location other than final destination).
- New shut off valves, pressure regulators, gas hoses, other misc. parts.
- Overtime installation requirements
- Shipping carrier hub holding fee (if job is delayed)
- Standby for store/location opening.
- Permits or tax, if applicable
- Refrigerant recovery fees, if applicable
- Union or prevailing wage labor
- CCIP or OCIP management

Please see Hobart Terms & Conditions for standard operating inclusions & exclusions.



Additional Items:

- Payment terms are Net 30.
- If there are any unusual circumstances a site visit is required, and a firm quotation will be provided for all necessary work. Unusual circumstances and exceptions to pricing outlined would include but are not limited to: restricted entryways, obstacles, architectural access restrictions, non-standard installation hours, unusual vehicle restrictions and local ordinances, etc.
- Any quotes are conditioned upon your acceptance of Hobart Service terms and conditions attached and those at www.hobartservice.com/servicetermsandconditions
- Hobart may conduct a site survey at customer's facility, such site surveys are intended to identify problems which can be readily identified through reasonable visual inspection however the customer is solely responsible for the state of their facility and site including electrical and plumbing lines. During a site survey, Hobart is under no obligation to excavate, move equipment, or otherwise disassemble or remove covers, fascia, sconces, or the like. Should problems or defects be identified during the site survey or Hobart's services, customer shall remedy such problems at its own cost before Hobart is required to continue performing the services.



Standard Equipment Installation Quotation

Quote Created: 2/26/2025	Quote Expires: 3/28/2025
Quotation For: Manor Isd Location: Decker Middle School 8104 Decker Ln Austin, TX 78724-2210	Quote Prepared By: Aaron Esquivel Telephone: Email: aaron.esquivel@hobartservice.com

Service Product	Price (excludes tax)	Qty.	Total Amount (excludes tax)
Garbage Disposal Electrical	\$1,100.00	1.00000	\$1,100.00
AM16 Electrical	\$4,500.00	1.00000	\$4,500.00
Total Quote Amount:			\$5,600.00 (excludes tax)

Statement of Work:

Hobart: Demo existing. Provide electrical modifications / upgrades per manufacturer specifications.

Included:

- New equipment must match the location's current specifications: electrical, gas lines, plumbing/drains, and venting.
- Installations completed during normal business hours. Monday – Friday; 8:00am – 5:00pm
- Schedule delivery to customer's facility
- Removal of packaging materials and rubbish

Excluded:

- Extended travel beyond 100-mile radius of the installing office
- Coordinate installation with the construction superintendent or contractor to include:
 - Electrical, plumbing, and venting connections to ensure they meet equipment specification.
- Any utility, venting, mechanical, stainless-steel, floor, hallway, doorway, wall, ceiling, and/or roof modifications/upgrades not listed in the above statement of work.
- Structural removal or replacement to make entry (walls, doors, counters, display cases, sinks, etc.)
- Wall repairs, tile, epoxy, sheet rock, wall coverings
- Ceiling obstructions and grid placement
- Other existing kitchen equipment that must be moved (and re-installed) in order to set new unit in place.
- Air Balancing and/or roof fans are not included unless quoted above in the statement of work.
- Delivery charge (if received at a location other than final destination).
- New shut off valves, pressure regulators, gas hoses, other misc. parts.
- Overtime installation requirements
- Shipping carrier hub holding fee (if job is delayed)
- Standby for store/location opening.
- Permits or tax, if applicable
- Refrigerant recovery fees, if applicable
- Union or prevailing wage labor
- CCIP or OCIP management



Please see Hobart Terms & Conditions for standard operating inclusions & exclusions.

Additional Items:

- Payment terms are Net 30.
- If there are any unusual circumstances a site visit is required, and a firm quotation will be provided for all necessary work. Unusual circumstances and exceptions to pricing outlined would include but are not limited to: restricted entryways, obstacles, architectural access restrictions, non-standard installation hours, unusual vehicle restrictions and local ordinances, etc.
- Any quotes are conditioned upon your acceptance of Hobart Service terms and conditions attached and those at www.hobartservice.com/servicetermsandconditions
- Hobart may conduct a site survey at customer's facility, such site surveys are intended to identify problems which can be readily identified through reasonable visual inspection however the customer is solely responsible for the state of their facility and site including electrical and plumbing lines. During a site survey, Hobart is under no obligation to excavate, move equipment, or otherwise disassemble or remove covers, fascia, sconces, or the like. Should problems or defects be identified during the site survey or Hobart's services, customer shall remedy such problems at its own cost before Hobart is required to continue performing the services.



Standard Equipment Installation Quotation

Quote Created: 2/26/2025	Quote Expires: 3/28/2025
Quotation For: Manor Isd Location: Lagos Elementary 11817 Murchison St Manor, TX 78653-5488	Quote Prepared By: Aaron Esquivel Telephone: Email: aaron.esquivel@hobartservice.com

Service Product	Price (excludes tax)	Qty.	Total Amount (excludes tax)
CL44EN Electrical	\$5,400.00	1.00000	\$5,400.00
Garbage Disposal Electrical	\$1,100.00	1.00000	\$1,100.00
Total Quote Amount:			\$6,500.00 (excludes tax)

Statement of Work:

Hobart: Demo existing. Provide electrical modifications / upgrades per manufacturer specifications.

Included:

- New equipment must match the location's current specifications: electrical, gas lines, plumbing/drains, and venting.
- Installations completed during normal business hours. Monday – Friday; 8:00am – 5:00pm
- Schedule delivery to customer's facility
- Removal of packaging materials and rubbish

Excluded:

- Extended travel beyond 100-mile radius of the installing office
- Coordinate installation with the construction superintendent or contractor to include:
 - Electrical, plumbing, and venting connections to ensure they meet equipment specification.
- Any utility, venting, mechanical, stainless-steel, floor, hallway, doorway, wall, ceiling, and/or roof modifications/upgrades not listed in the above statement of work.
- Structural removal or replacement to make entry (walls, doors, counters, display cases, sinks, etc.)
- Wall repairs, tile, epoxy, sheet rock, wall coverings
- Ceiling obstructions and grid placement
- Other existing kitchen equipment that must be moved (and re-installed) in order to set new unit in place.
- Air Balancing and/or roof fans are not included unless quoted above in the statement of work.
- Delivery charge (if received at a location other than final destination).
- New shut off valves, pressure regulators, gas hoses, other misc. parts.
- Overtime installation requirements
- Shipping carrier hub holding fee (if job is delayed)
- Standby for store/location opening.
- Permits or tax, if applicable
- Refrigerant recovery fees, if applicable
- Union or prevailing wage labor
- CCIP or OCIP management



Please see Hobart Terms & Conditions for standard operating inclusions & exclusions.

Additional Items:

- Payment terms are Net 30.
- If there are any unusual circumstances a site visit is required, and a firm quotation will be provided for all necessary work. Unusual circumstances and exceptions to pricing outlined would include but are not limited to: restricted entryways, obstacles, architectural access restrictions, non-standard installation hours, unusual vehicle restrictions and local ordinances, etc.
- Any quotes are conditioned upon your acceptance of Hobart Service terms and conditions attached and those at www.hobartservice.com/servicetermsandconditions
- Hobart may conduct a site survey at customer's facility, such site surveys are intended to identify problems which can be readily identified through reasonable visual inspection however the customer is solely responsible for the state of their facility and site including electrical and plumbing lines. During a site survey, Hobart is under no obligation to excavate, move equipment, or otherwise disassemble or remove covers, fascia, sconces, or the like. Should problems or defects be identified during the site survey or Hobart's services, customer shall remedy such problems at its own cost before Hobart is required to continue performing the services.



Standard Equipment Installation Quotation

Quote Created: 2/26/2025	Quote Expires: 3/28/2025
Quotation For: Manor Isd Location: Lagos Elementary 11817 Murchison St Manor, TX 78653-5488	Quote Prepared By: Aaron Esquivel Telephone: Email: aaron.esquivel@hobartservice.com

Service Product	Price (excludes tax)	Qty.	Total Amount (excludes tax)
Fabrication	\$13,000.00	1.00000	\$13,000.00
Vent Fan Electrical	\$1,530.00	1.00000	\$1,530.00
Total Quote Amount:			\$14,530.00 (excludes tax)

Statement of Work:

Hobart: Run required ventilation for new Cline dishwasher with new fan motor.

Included:

- Installations completed during normal business hours. Monday – Friday; 8:00am – 5:00pm
- Schedule delivery to customer's facility
- Removal of packaging materials and rubbish

Excluded:

- Extended travel beyond 100-mile radius of the installing office
- Coordinate installation with the construction superintendent or contractor to include:
 - Electrical, plumbing, and venting connections to ensure they meet equipment specification.
- Any utility, venting, mechanical, stainless-steel, floor, hallway, doorway, wall, ceiling, and/or roof modifications/upgrades not listed in the above statement of work.
- Structural removal or replacement to make entry (walls, doors, counters, display cases, sinks, etc.)
- Wall repairs, tile, epoxy, sheet rock, wall coverings
- Ceiling obstructions and grid placement
- Other existing kitchen equipment that must be moved (and re-installed) in order to set new unit in place.
- Air Balancing and/or roof fans are not included unless quoted above in the statement of work.
- Delivery charge (if received at a location other than final destination).
- New shut off valves, pressure regulators, gas hoses, other misc. parts.
- Overtime installation requirements
- Shipping carrier hub holding fee (if job is delayed)
- Standby for store/location opening.
- Permits or tax, if applicable
- Refrigerant recovery fees, if applicable
- Union or prevailing wage labor
- CCIP or OCIP management

Please see Hobart Terms & Conditions for standard operating inclusions & exclusions.

**Additional Items:**

- Payment terms are Net 30.
- If there are any unusual circumstances a site visit is required, and a firm quotation will be provided for all necessary work. Unusual circumstances and exceptions to pricing outlined would include but are not limited to: restricted entryways, obstacles, architectural access restrictions, non-standard installation hours, unusual vehicle restrictions and local ordinances, etc.
- Any quotes are conditioned upon your acceptance of Hobart Service terms and conditions attached and those at www.hobartservice.com/servicetermsandconditions
- Hobart may conduct a site survey at customer's facility, such site surveys are intended to identify problems which can be readily identified through reasonable visual inspection however the customer is solely responsible for the state of their facility and site including electrical and plumbing lines. During a site survey, Hobart is under no obligation to excavate, move equipment, or otherwise disassemble or remove covers, fascia, sconces, or the like. Should problems or defects be identified during the site survey or Hobart's services, customer shall remedy such problems at its own cost before Hobart is required to continue performing the services.



Standard Equipment Installation Quotation

Quote Created: 2/26/2025	Quote Expires: 3/28/2025
Quotation For: Manor Isd Location: Manor High School 12700 Gregg Manor Rd Manor, TX 78653-3357	Quote Prepared By: Aaron Esquivel Telephone: Email: aaron.esquivel@hobartservice.com

Service Product	Price (excludes tax)	Qty.	Total Amount (excludes tax)
Garbage Disposal Electrical	\$1,100.00	1.00000	\$1,100.00
AM16 Electrical	\$4,500.00	1.00000	\$4,500.00
Total Quote Amount:			\$5,600.00 (excludes tax)

Statement of Work:

Hobart: Demo existing. Provide electrical modifications / upgrades per manufacturer specifications.

Included:

- New equipment must match the location's current specifications: electrical, gas lines, plumbing/drains, and venting.
- Installations completed during normal business hours. Monday – Friday; 8:00am – 5:00pm
- Schedule delivery to customer's facility
- Removal of packaging materials and rubbish

Excluded:

- Extended travel beyond 100-mile radius of the installing office
- Coordinate installation with the construction superintendent or contractor to include:
 - Electrical, plumbing, and venting connections to ensure they meet equipment specification.
- Any utility, venting, mechanical, stainless-steel, floor, hallway, doorway, wall, ceiling, and/or roof modifications/upgrades not listed in the above statement of work.
- Structural removal or replacement to make entry (walls, doors, counters, display cases, sinks, etc.)
- Wall repairs, tile, epoxy, sheet rock, wall coverings
- Ceiling obstructions and grid placement
- Other existing kitchen equipment that must be moved (and re-installed) in order to set new unit in place.
- Air Balancing and/or roof fans are not included unless quoted above in the statement of work.
- Delivery charge (if received at a location other than final destination).
- New shut off valves, pressure regulators, gas hoses, other misc. parts.
- Overtime installation requirements
- Shipping carrier hub holding fee (if job is delayed)
- Standby for store/location opening.
- Permits or tax, if applicable
- Refrigerant recovery fees, if applicable
- Union or prevailing wage labor
- CCIP or OCIP management



Please see Hobart Terms & Conditions for standard operating inclusions & exclusions.

Additional Items:

- Payment terms are Net 30.
- If there are any unusual circumstances a site visit is required, and a firm quotation will be provided for all necessary work. Unusual circumstances and exceptions to pricing outlined would include but are not limited to: restricted entryways, obstacles, architectural access restrictions, non-standard installation hours, unusual vehicle restrictions and local ordinances, etc.
- Any quotes are conditioned upon your acceptance of Hobart Service terms and conditions attached and those at www.hobartservice.com/servicetermsandconditions
- Hobart may conduct a site survey at customer's facility, such site surveys are intended to identify problems which can be readily identified through reasonable visual inspection however the customer is solely responsible for the state of their facility and site including electrical and plumbing lines. During a site survey, Hobart is under no obligation to excavate, move equipment, or otherwise disassemble or remove covers, fascia, sconces, or the like. Should problems or defects be identified during the site survey or Hobart's services, customer shall remedy such problems at its own cost before Hobart is required to continue performing the services.



Standard Equipment Installation Quotation

Quote Created: 2/26/2025	Quote Expires: 3/28/2025
Quotation For: Manor Isd Location: Manor Middle School 12900 Gregg Manor Rd Manor, TX 78653-3401	Quote Prepared By: Aaron Esquivel Telephone: Email: aaron.esquivel@hobartservice.com

Service Product	Price (excludes tax)	Qty.	Total Amount (excludes tax)
Garbage Disposal Electrical	\$1,100.00	1.00000	\$1,100.00
AM16 Electrical	\$4,500.00	1.00000	\$4,500.00
Total Quote Amount:			\$5,600.00 (excludes tax)

Statement of Work:

Hobart: Demo existing. Provide electrical modifications / upgrades per manufacturer specifications.

Included:

- New equipment must match the location's current specifications: electrical, gas lines, plumbing/drains, and venting.
- Installations completed during normal business hours. Monday – Friday; 8:00am – 5:00pm
- Schedule delivery to customer's facility
- Removal of packaging materials and rubbish

Excluded:

- Extended travel beyond 100-mile radius of the installing office
- Coordinate installation with the construction superintendent or contractor to include:
 - Electrical, plumbing, and venting connections to ensure they meet equipment specification.
- Any utility, venting, mechanical, stainless-steel, floor, hallway, doorway, wall, ceiling, and/or roof modifications/upgrades not listed in the above statement of work.
- Structural removal or replacement to make entry (walls, doors, counters, display cases, sinks, etc.)
- Wall repairs, tile, epoxy, sheet rock, wall coverings
- Ceiling obstructions and grid placement
- Other existing kitchen equipment that must be moved (and re-installed) in order to set new unit in place.
- Air Balancing and/or roof fans are not included unless quoted above in the statement of work.
- Delivery charge (if received at a location other than final destination).
- New shut off valves, pressure regulators, gas hoses, other misc. parts.
- Overtime installation requirements
- Shipping carrier hub holding fee (if job is delayed)
- Standby for store/location opening.
- Permits or tax, if applicable
- Refrigerant recovery fees, if applicable
- Union or prevailing wage labor
- CCIP or OCIP management



Please see Hobart Terms & Conditions for standard operating inclusions & exclusions.

Additional Items:

- Payment terms are Net 30.
- If there are any unusual circumstances a site visit is required, and a firm quotation will be provided for all necessary work. Unusual circumstances and exceptions to pricing outlined would include but are not limited to: restricted entryways, obstacles, architectural access restrictions, non-standard installation hours, unusual vehicle restrictions and local ordinances, etc.
- Any quotes are conditioned upon your acceptance of Hobart Service terms and conditions attached and those at www.hobartservice.com/servicetermsandconditions
- Hobart may conduct a site survey at customer's facility, such site surveys are intended to identify problems which can be readily identified through reasonable visual inspection however the customer is solely responsible for the state of their facility and site including electrical and plumbing lines. During a site survey, Hobart is under no obligation to excavate, move equipment, or otherwise disassemble or remove covers, fascia, sconces, or the like. Should problems or defects be identified during the site survey or Hobart's services, customer shall remedy such problems at its own cost before Hobart is required to continue performing the services.



Standard Equipment Installation Quotation

Quote Created: 2/26/2025	Quote Expires: 3/28/2025
Quotation For: Manor Isd Location: Manor Senior High School 14832 N Fm 973 Rd Manor, TX 78653-3540	Quote Prepared By: Aaron Esquivel Telephone: Email: aaron.esquivel@hobartservice.com

Service Product	Price (excludes tax)	Qty.	Total Amount (excludes tax)
PW10 Electrical	\$7,800.00	1.00000	\$7,800.00
Total Quote Amount:			\$7,800.00 (excludes tax)

Statement of Work:

Hobart: Demo existing. Provide electrical modifications / upgrades per manufacturer specifications.

Included:

- New equipment must match the location's current specifications: electrical, gas lines, plumbing/drains, and venting.
- Installations completed during normal business hours. Monday – Friday; 8:00am – 5:00pm
- Schedule delivery to customer's facility
- Removal of packaging materials and rubbish

Excluded:

- Extended travel beyond 100-mile radius of the installing office
- Coordinate installation with the construction superintendent or contractor to include:
 - Electrical, plumbing, and venting connections to ensure they meet equipment specification.
- Any utility, venting, mechanical, stainless-steel, floor, hallway, doorway, wall, ceiling, and/or roof modifications/upgrades not listed in the above statement of work.
- Structural removal or replacement to make entry (walls, doors, counters, display cases, sinks, etc.)
- Wall repairs, tile, epoxy, sheet rock, wall coverings
- Ceiling obstructions and grid placement
- Other existing kitchen equipment that must be moved (and re-installed) in order to set new unit in place.
- Air Balancing and/or roof fans are not included unless quoted above in the statement of work.
- Delivery charge (if received at a location other than final destination).
- New shut off valves, pressure regulators, gas hoses, other misc. parts.
- Overtime installation requirements
- Shipping carrier hub holding fee (if job is delayed)
- Standby for store/location opening.
- Permits or tax, if applicable
- Refrigerant recovery fees, if applicable
- Union or prevailing wage labor
- CCIP or OCIP management

Please see Hobart Terms & Conditions for standard operating inclusions & exclusions.



Additional Items:

- Payment terms are Net 30.
- If there are any unusual circumstances a site visit is required, and a firm quotation will be provided for all necessary work. Unusual circumstances and exceptions to pricing outlined would include but are not limited to: restricted entryways, obstacles, architectural access restrictions, non-standard installation hours, unusual vehicle restrictions and local ordinances, etc.
- Any quotes are conditioned upon your acceptance of Hobart Service terms and conditions attached and those at www.hobartservice.com/servicetermsandconditions
- Hobart may conduct a site survey at customer's facility, such site surveys are intended to identify problems which can be readily identified through reasonable visual inspection however the customer is solely responsible for the state of their facility and site including electrical and plumbing lines. During a site survey, Hobart is under no obligation to excavate, move equipment, or otherwise disassemble or remove covers, fascia, sconces, or the like. Should problems or defects be identified during the site survey or Hobart's services, customer shall remedy such problems at its own cost before Hobart is required to continue performing the services.



Standard Equipment Installation Quotation

Quote Created: 2/26/2025	Quote Expires: 3/28/2025
Quotation For: Manor Isd Location: Oak Meadows Elementary 5600 Decker Ln Austin, TX 78724-5704	Quote Prepared By: Aaron Esquivel Telephone: Email: aaron.esquivel@hobartservice.com

Service Product	Price (excludes tax)	Qty.	Total Amount (excludes tax)
Garbage Disposal Electrical	\$1,100.00	1.00000	\$1,100.00
AM16 Electrical	\$4,500.00	1.00000	\$4,500.00
Total Quote Amount:			\$5,600.00 (excludes tax)

Statement of Work:

Hobart: Demo existing. Provide electrical modifications / upgrades per manufacturer specifications.

Included:

- New equipment must match the location's current specifications: electrical, gas lines, plumbing/drains, and venting.
- Installations completed during normal business hours. Monday – Friday; 8:00am – 5:00pm
- Schedule delivery to customer's facility
- Removal of packaging materials and rubbish

Excluded:

- Extended travel beyond 100-mile radius of the installing office
- Coordinate installation with the construction superintendent or contractor to include:
 - Electrical, plumbing, and venting connections to ensure they meet equipment specification.
- Any utility, venting, mechanical, stainless-steel, floor, hallway, doorway, wall, ceiling, and/or roof modifications/upgrades not listed in the above statement of work.
- Structural removal or replacement to make entry (walls, doors, counters, display cases, sinks, etc.)
- Wall repairs, tile, epoxy, sheet rock, wall coverings
- Ceiling obstructions and grid placement
- Other existing kitchen equipment that must be moved (and re-installed) in order to set new unit in place.
- Air Balancing and/or roof fans are not included unless quoted above in the statement of work.
- Delivery charge (if received at a location other than final destination).
- New shut off valves, pressure regulators, gas hoses, other misc. parts.
- Overtime installation requirements
- Shipping carrier hub holding fee (if job is delayed)
- Standby for store/location opening.
- Permits or tax, if applicable
- Refrigerant recovery fees, if applicable
- Union or prevailing wage labor
- CCIP or OCIP management



Please see Hobart Terms & Conditions for standard operating inclusions & exclusions.

Additional Items:

- Payment terms are Net 30.
- If there are any unusual circumstances a site visit is required, and a firm quotation will be provided for all necessary work. Unusual circumstances and exceptions to pricing outlined would include but are not limited to: restricted entryways, obstacles, architectural access restrictions, non-standard installation hours, unusual vehicle restrictions and local ordinances, etc.
- Any quotes are conditioned upon your acceptance of Hobart Service terms and conditions attached and those at www.hobartservice.com/servicetermsandconditions
- Hobart may conduct a site survey at customer's facility, such site surveys are intended to identify problems which can be readily identified through reasonable visual inspection however the customer is solely responsible for the state of their facility and site including electrical and plumbing lines. During a site survey, Hobart is under no obligation to excavate, move equipment, or otherwise disassemble or remove covers, fascia, sconces, or the like. Should problems or defects be identified during the site survey or Hobart's services, customer shall remedy such problems at its own cost before Hobart is required to continue performing the services.



Standard Equipment Installation Quotation

Quote Created: 2/26/2025	Quote Expires: 3/28/2025
Quotation For: Manor Isd Location: Pioneer Crossing Elementary 11300 Samsung Blvd Austin, TX 78754-5997	Quote Prepared By: Aaron Esquivel Telephone: Email: aaron.esquivel@hobartservice.com

Service Product	Price (excludes tax)	Qty.	Total Amount (excludes tax)
Garbage Disposal Electrical	\$1,100.00	1.00000	\$1,100.00
CL44EN Electrical	\$5,400.00	1.00000	\$5,400.00
Single Section Pass Thru Electrical	\$900.00	1.00000	\$900.00
Total Quote Amount:			\$7,400.00 (excludes tax)

Statement of Work:

Hobart: Demo existing. Provide electrical modifications / upgrades per manufacturer specifications.

Included:

- New equipment must match the location's current specifications: electrical, gas lines, plumbing/drains, and venting.
- Installations completed during normal business hours. Monday – Friday; 8:00am – 5:00pm
- Schedule delivery to customer's facility
- Removal of packaging materials and rubbish

Excluded:

- Extended travel beyond 100-mile radius of the installing office
- Coordinate installation with the construction superintendent or contractor to include:
 - Electrical, plumbing, and venting connections to ensure they meet equipment specification.
- Any utility, venting, mechanical, stainless-steel, floor, hallway, doorway, wall, ceiling, and/or roof modifications/upgrades not listed in the above statement of work.
- Structural removal or replacement to make entry (walls, doors, counters, display cases, sinks, etc.)
- Wall repairs, tile, epoxy, sheet rock, wall coverings
- Ceiling obstructions and grid placement
- Other existing kitchen equipment that must be moved (and re-installed) in order to set new unit in place.
- Air Balancing and/or roof fans are not included unless quoted above in the statement of work.
- Delivery charge (if received at a location other than final destination).
- New shut off valves, pressure regulators, gas hoses, other misc. parts.
- Overtime installation requirements
- Shipping carrier hub holding fee (if job is delayed)
- Standby for store/location opening.
- Permits or tax, if applicable
- Refrigerant recovery fees, if applicable
- Union or prevailing wage labor
- CCIP or OCIP management



Please see Hobart Terms & Conditions for standard operating inclusions & exclusions.

Additional Items:

- Payment terms are Net 30.
- If there are any unusual circumstances a site visit is required, and a firm quotation will be provided for all necessary work. Unusual circumstances and exceptions to pricing outlined would include but are not limited to: restricted entryways, obstacles, architectural access restrictions, non-standard installation hours, unusual vehicle restrictions and local ordinances, etc.
- Any quotes are conditioned upon your acceptance of Hobart Service terms and conditions attached and those at www.hobartservice.com/servicetermsandconditions
- Hobart may conduct a site survey at customer's facility, such site surveys are intended to identify problems which can be readily identified through reasonable visual inspection however the customer is solely responsible for the state of their facility and site including electrical and plumbing lines. During a site survey, Hobart is under no obligation to excavate, move equipment, or otherwise disassemble or remove covers, fascia, sconces, or the like. Should problems or defects be identified during the site survey or Hobart's services, customer shall remedy such problems at its own cost before Hobart is required to continue performing the services.



Standard Equipment Installation Quotation

Quote Created: 2/26/2025	Quote Expires: 3/28/2025
Quotation For: Manor Isd Location: Pioneer Crossing Elementary 11300 Samsung Blvd Austin, TX 78754-5997	Quote Prepared By: Aaron Esquivel Telephone: Email: aaron.esquivel@hobartservice.com

Service Product	Price (excludes tax)	Qty.	Total Amount (excludes tax)
Fabrication	\$13,000.00	1.00000	\$13,000.00
Vent Fan Electrical	\$1,530.00	1.00000	\$1,530.00
Total Quote Amount:			\$14,530.00 (excludes tax)

Statement of Work:

Hobart: Run required ventilation for new Cline dishwasher with new fan motor.

Included:

- Installations completed during normal business hours. Monday – Friday; 8:00am – 5:00pm
- Schedule delivery to customer's facility
- Removal of packaging materials and rubbish

Excluded:

- Extended travel beyond 100-mile radius of the installing office
- Coordinate installation with the construction superintendent or contractor to include:
 - Electrical, plumbing, and venting connections to ensure they meet equipment specification.
- Any utility, venting, mechanical, stainless-steel, floor, hallway, doorway, wall, ceiling, and/or roof modifications/upgrades not listed in the above statement of work.
- Structural removal or replacement to make entry (walls, doors, counters, display cases, sinks, etc.)
- Wall repairs, tile, epoxy, sheet rock, wall coverings
- Ceiling obstructions and grid placement
- Other existing kitchen equipment that must be moved (and re-installed) in order to set new unit in place.
- Air Balancing and/or roof fans are not included unless quoted above in the statement of work.
- Delivery charge (if received at a location other than final destination).
- New shut off valves, pressure regulators, gas hoses, other misc. parts.
- Overtime installation requirements
- Shipping carrier hub holding fee (if job is delayed)
- Standby for store/location opening.
- Permits or tax, if applicable
- Refrigerant recovery fees, if applicable
- Union or prevailing wage labor
- CCIP or OCIP management

Please see Hobart Terms & Conditions for standard operating inclusions & exclusions.

**Additional Items:**

- Payment terms are Net 30.
- If there are any unusual circumstances a site visit is required, and a firm quotation will be provided for all necessary work. Unusual circumstances and exceptions to pricing outlined would include but are not limited to: restricted entryways, obstacles, architectural access restrictions, non-standard installation hours, unusual vehicle restrictions and local ordinances, etc.
- Any quotes are conditioned upon your acceptance of Hobart Service terms and conditions attached and those at www.hobartservice.com/servicetermsandconditions
- Hobart may conduct a site survey at customer's facility, such site surveys are intended to identify problems which can be readily identified through reasonable visual inspection however the customer is solely responsible for the state of their facility and site including electrical and plumbing lines. During a site survey, Hobart is under no obligation to excavate, move equipment, or otherwise disassemble or remove covers, fascia, sconces, or the like. Should problems or defects be identified during the site survey or Hobart's services, customer shall remedy such problems at its own cost before Hobart is required to continue performing the services.



Standard Equipment Installation Quotation

Quote Created: 2/26/2025	Quote Expires: 3/28/2025
Quotation For: Manor Isd Location: Presidential Meadows Elementary 13252 George Bush St Manor, TX 78653-3972	Quote Prepared By: Aaron Esquivel Telephone: Email: aaron.esquivel@hobartservice.com

Service Product	Price (excludes tax)	Qty.	Total Amount (excludes tax)
Garbage Disposal Electrical	\$1,100.00	1.00000	\$1,100.00
AM16 Electrical	\$4,500.00	1.00000	\$4,500.00
Total Quote Amount:			\$5,600.00 (excludes tax)

Statement of Work:

Hobart: Demo existing. Provide electrical modifications / upgrades per manufacturer specifications.

Included:

- New equipment must match the location's current specifications: electrical, gas lines, plumbing/drains, and venting.
- Installations completed during normal business hours. Monday – Friday; 8:00am – 5:00pm
- Schedule delivery to customer's facility
- Removal of packaging materials and rubbish

Excluded:

- Extended travel beyond 100-mile radius of the installing office
- Coordinate installation with the construction superintendent or contractor to include:
 - Electrical, plumbing, and venting connections to ensure they meet equipment specification.
- Any utility, venting, mechanical, stainless-steel, floor, hallway, doorway, wall, ceiling, and/or roof modifications/upgrades not listed in the above statement of work.
- Structural removal or replacement to make entry (walls, doors, counters, display cases, sinks, etc.)
- Wall repairs, tile, epoxy, sheet rock, wall coverings
- Ceiling obstructions and grid placement
- Other existing kitchen equipment that must be moved (and re-installed) in order to set new unit in place.
- Air Balancing and/or roof fans are not included unless quoted above in the statement of work.
- Delivery charge (if received at a location other than final destination).
- New shut off valves, pressure regulators, gas hoses, other misc. parts.
- Overtime installation requirements
- Shipping carrier hub holding fee (if job is delayed)
- Standby for store/location opening.
- Permits or tax, if applicable
- Refrigerant recovery fees, if applicable
- Union or prevailing wage labor
- CCIP or OCIP management



Please see Hobart Terms & Conditions for standard operating inclusions & exclusions.

Additional Items:

- Payment terms are Net 30.
- If there are any unusual circumstances a site visit is required, and a firm quotation will be provided for all necessary work. Unusual circumstances and exceptions to pricing outlined would include but are not limited to: restricted entryways, obstacles, architectural access restrictions, non-standard installation hours, unusual vehicle restrictions and local ordinances, etc.
- Any quotes are conditioned upon your acceptance of Hobart Service terms and conditions attached and those at www.hobartservice.com/servicetermsandconditions
- Hobart may conduct a site survey at customer's facility, such site surveys are intended to identify problems which can be readily identified through reasonable visual inspection however the customer is solely responsible for the state of their facility and site including electrical and plumbing lines. During a site survey, Hobart is under no obligation to excavate, move equipment, or otherwise disassemble or remove covers, fascia, sconces, or the like. Should problems or defects be identified during the site survey or Hobart's services, customer shall remedy such problems at its own cost before Hobart is required to continue performing the services.



Standard Equipment Installation Quotation

Quote Created: 2/26/2025	Quote Expires: 3/28/2025
Quotation For: Manor Isd Location: Shadow Glen Elementary School 1200 Shadowglen Trace Manor, TX 78653	Quote Prepared By: Aaron Esquivel Telephone: Email: aaron.esquivel@hobartservice.com

Service Product	Price (excludes tax)	Qty.	Total Amount (excludes tax)
Garbage Disposal Electrical	\$1,100.00	1.00000	\$1,100.00
CL44EN Electrical	\$5,400.00	1.00000	\$5,400.00
Total Quote Amount:			\$6,500.00 (excludes tax)

Statement of Work:

Hobart: Demo existing. Provide electrical modifications / upgrades per manufacturer specifications.

Included:

- New equipment must match the location's current specifications: electrical, gas lines, plumbing/drains, and venting.
- Installations completed during normal business hours. Monday – Friday; 8:00am – 5:00pm
- Schedule delivery to customer's facility
- Removal of packaging materials and rubbish

Excluded:

- Extended travel beyond 100-mile radius of the installing office
- Coordinate installation with the construction superintendent or contractor to include:
 - Electrical, plumbing, and venting connections to ensure they meet equipment specification.
- Any utility, venting, mechanical, stainless-steel, floor, hallway, doorway, wall, ceiling, and/or roof modifications/upgrades not listed in the above statement of work.
- Structural removal or replacement to make entry (walls, doors, counters, display cases, sinks, etc.)
- Wall repairs, tile, epoxy, sheet rock, wall coverings
- Ceiling obstructions and grid placement
- Other existing kitchen equipment that must be moved (and re-installed) in order to set new unit in place.
- Air Balancing and/or roof fans are not included unless quoted above in the statement of work.
- Delivery charge (if received at a location other than final destination).
- New shut off valves, pressure regulators, gas hoses, other misc. parts.
- Overtime installation requirements
- Shipping carrier hub holding fee (if job is delayed)
- Standby for store/location opening.
- Permits or tax, if applicable
- Refrigerant recovery fees, if applicable
- Union or prevailing wage labor
- CCIP or OCIP management



Please see Hobart Terms & Conditions for standard operating inclusions & exclusions.

Additional Items:

- Payment terms are Net 30.
- If there are any unusual circumstances a site visit is required, and a firm quotation will be provided for all necessary work. Unusual circumstances and exceptions to pricing outlined would include but are not limited to: restricted entryways, obstacles, architectural access restrictions, non-standard installation hours, unusual vehicle restrictions and local ordinances, etc.
- Any quotes are conditioned upon your acceptance of Hobart Service terms and conditions attached and those at www.hobartservice.com/servicetermsandconditions
- Hobart may conduct a site survey at customer's facility, such site surveys are intended to identify problems which can be readily identified through reasonable visual inspection however the customer is solely responsible for the state of their facility and site including electrical and plumbing lines. During a site survey, Hobart is under no obligation to excavate, move equipment, or otherwise disassemble or remove covers, fascia, sconces, or the like. Should problems or defects be identified during the site survey or Hobart's services, customer shall remedy such problems at its own cost before Hobart is required to continue performing the services.



Standard Equipment Installation Quotation

Quote Created: 2/26/2025	Quote Expires: 3/28/2025
Quotation For: Manor Isd Location: Shadowglen Elementary 12000 Shadowglen Trce Manor, TX 78653-4077	Quote Prepared By: Aaron Esquivel Telephone: Email: aaron.esquivel@hobartservice.com

Service Product	Price (excludes tax)	Qty.	Total Amount (excludes tax)
Fabrication	\$13,000.00	1.00000	\$13,000.00
Vent Fan Electrical	\$1,530.00	1.00000	\$1,530.00
Total Quote Amount:			\$14,530.00 (excludes tax)

Statement of Work:

Hobart: Run required ventilation for new Cline dishwasher with new fan motor.

Included:

- Installations completed during normal business hours. Monday – Friday; 8:00am – 5:00pm
- Schedule delivery to customer's facility
- Removal of packaging materials and rubbish

Excluded:

- Extended travel beyond 100-mile radius of the installing office
- Coordinate installation with the construction superintendent or contractor to include:
 - Electrical, plumbing, and venting connections to ensure they meet equipment specification.
- Any utility, venting, mechanical, stainless-steel, floor, hallway, doorway, wall, ceiling, and/or roof modifications/upgrades not listed in the above statement of work.
- Structural removal or replacement to make entry (walls, doors, counters, display cases, sinks, etc.)
- Wall repairs, tile, epoxy, sheet rock, wall coverings
- Ceiling obstructions and grid placement
- Other existing kitchen equipment that must be moved (and re-installed) in order to set new unit in place.
- Air Balancing and/or roof fans are not included unless quoted above in the statement of work.
- Delivery charge (if received at a location other than final destination).
- New shut off valves, pressure regulators, gas hoses, other misc. parts.
- Overtime installation requirements
- Shipping carrier hub holding fee (if job is delayed)
- Standby for store/location opening.
- Permits or tax, if applicable
- Refrigerant recovery fees, if applicable
- Union or prevailing wage labor
- CCIP or OCIP management

Please see Hobart Terms & Conditions for standard operating inclusions & exclusions.



Additional Items:

- Payment terms are Net 30.
- If there are any unusual circumstances a site visit is required, and a firm quotation will be provided for all necessary work. Unusual circumstances and exceptions to pricing outlined would include but are not limited to: restricted entryways, obstacles, architectural access restrictions, non-standard installation hours, unusual vehicle restrictions and local ordinances, etc.
- Any quotes are conditioned upon your acceptance of Hobart Service terms and conditions attached and those at www.hobartservice.com/servicetermsandconditions

Hobart may conduct a site survey at customer's facility, such site surveys are intended to identify problems which can be readily identified through reasonable visual inspection however the customer is solely responsible for the state of their facility and site including electrical and plumbing lines. During a site survey, Hobart is under no obligation to excavate, move equipment, or otherwise disassemble or remove covers, fascia, sconces, or the like. Should problems or defects be identified during the site survey or Hobart's services, customer shall remedy such problems at its own cost before Hobart is required to continue performing the services.