



Prepared For Zundy ES, EPIC V3, Wichita Falls Ind Sch
District
Proposal ID# 148162
SAP Quote# 127095
April 22, 2026



SOLUTIONS PROPOSAL



Dear Wichita Falls Ind Sch District,

I want to personally thank you for inviting us to submit a proposal to Wichita Falls Ind Sch District!

When my mother, Claudia Anderson, founded Audio Enhancement over 40 years ago, we never imagined the impact our services would have on education today. Through customer feedback, we have grown from offering classroom audio solutions to providing district-wide communication and safety technology. We have impacted over 4,500 districts, 43,000 schools, and over 1,300,000 classrooms across the world. We are excited for the opportunity to help you!

Our team focuses on hiring employees with a passion to make a difference in education. We look forward to developing a deeper partnership with Wichita Falls Ind Sch District through building friendship and trust during the ongoing stages of your project.

It is our pleasure to submit this proposal to Wichita Falls Ind Sch District. As with all proposals, revisions can be made at any time.

We look forward to your response and are available to answer any questions during the review process.

From all of us here at Audio Enhancement, thank you!

Sincerely yours,



A handwritten signature in black ink, appearing to read "Jeff Anderson", written over a white background.

Jeff Anderson
Audio Enhancement, CEO

COMPANY HISTORY

Making a Difference In Education

For more than forty years, Audio Enhancement® has served the schools throughout the United States, providing both classroom audio enhancement systems as well as integration services for classroom technology. Audio Enhancement is headquartered in Utah, and has facilities in Georgia and Florida.

Audio Enhancement was founded in 1978 by Claudia Anderson around the simple idea that “learning begins with hearing.” Having two hearing impaired children; the first Audio Enhancement systems were designed specifically for the hearing impaired. Early in our history, technological advancements made it possible to also provide whole classroom sound systems, benefiting all students. Audio Enhancement has been the innovator and leader in this field.

By 2004, it was clear that classroom audio enhancement systems were a key part of the overall technology landscape in the classroom. Based on our high level of support, outstanding customer service, and training that was provided for the audio systems, several school districts came to us and requested that we expand our product offerings. Based on these requests, we undertook an initiative to increase our capabilities in order to provide a complete integrated technology package for the classroom. These offerings include display devices, control, video/audio playback devices and interactive technologies. By utilizing the principles developed over thirty years of providing classroom audio systems to the schools, we were able to provide both technical integration, teacher in-servicing, training, and professional development to help the schools ensure the success of their technology goals.

Moving the company forward, in 2008, Audio Enhancement was incorporated: Jeff Anderson, President and CEO, Jennifer Crum, CFO, Jeremy Anderson, CAO, and Justin Anderson, COO. Today, the Audio Enhancement product line improves student achievement, decreases teacher vocal fatigue and absenteeism, and creates positive student behavior. Audio Enhancement systems also increase focus and attention and supports classroom management.



The Anderson Family

MAP OF DESIGN



Zones and Legends

- Cafe/kitchen
- Gym
- Auditorium
- Hall 1
- Hall 2
- Hall 3
- Hall 4
- Gym 2
- Exterior 1
- Exterior 2
- Exterior 3

Virtual EPIC Head E... 1	Cafe/kitchen 1	Gym 1
Auditorium 1	Hall 1 1	Hall 2 1
Hall 3 1	Hall 4 1	Gym 2 1
Exterior 1 1	Exterior 2 1	Exterior 3 1
70V CZA-1300 Syste... 1	2spkr MS-700-S Opt... 41	MDF 1
IDF 1	70V Ceiling Speaker,... 95	Volume Control 25/7... 10
Speaker Quam Syst... 4	70V Slanted, Square... 13	All-Weather Compac... 9

MAP OF DESIGN



Zones and Legends (continued)

8	8" 2-way 70V Outdo...	12	E	EPIC Strobe Bundle	7
----------	-----------------------	-----------	----------	--------------------	----------

MAP OF DESIGN



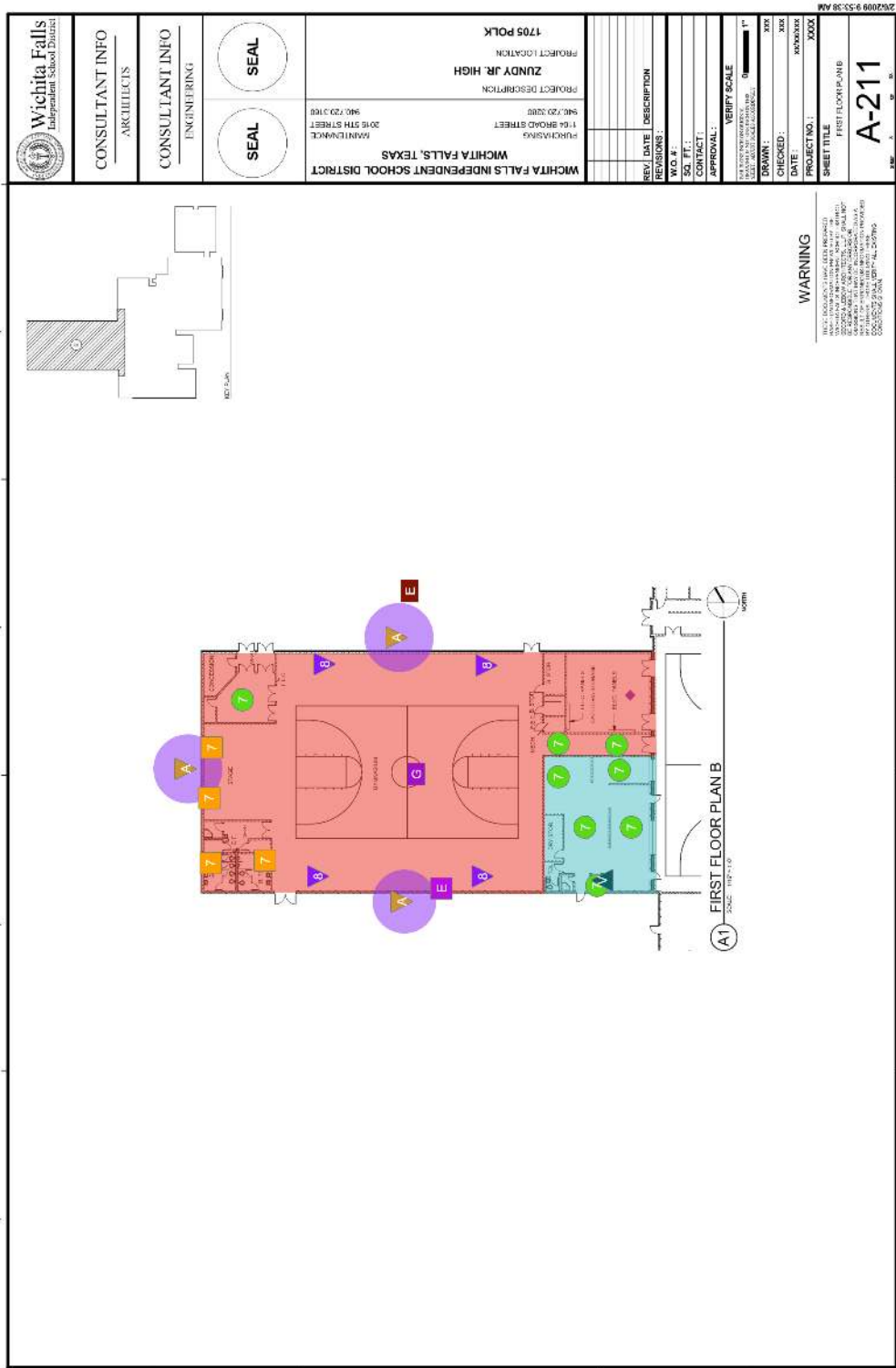
1



MAP OF DESIGN



2



MAP OF DESIGN



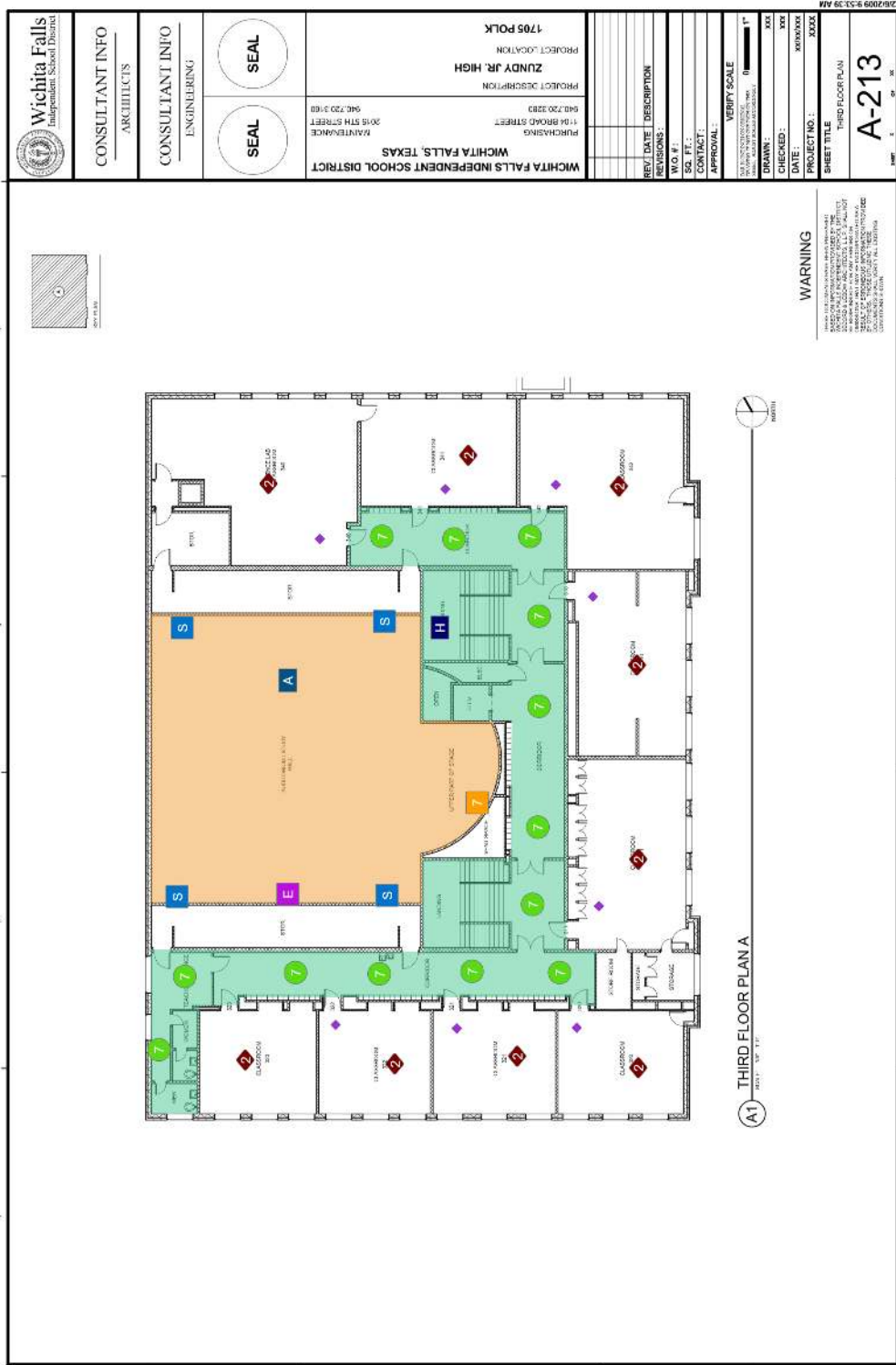
3



MAP OF DESIGN



4



PRICING PROPOSAL



Quote 127095

Pricing Valid for 90 Days - July 21, 2026

Wichita Falls Ind Sch District - Zundy ES, EPIC V3

Purchasing Cooperative TIPS/TAPS 230901 Audio Visual Equipment, Supplies and Services used for this project.

Classroom Equipment		\$60,218.13
EPIC System School Equipment		\$56,928.53
Services		\$88,307.00
Software Licensing		\$11,543.46
Contingency		\$12,700.00
Training		\$500.00
		<hr/>
	Discount	(\$27,115.08)
	Taxes	\$0.00
	Shipping	\$2,746.00
		<hr/>
Wichita Falls Ind Sch District Price		\$205,828.04

By sending in a Purchase Order in response to this proposal, the customer is agreeing to the Audio Enhancement terms and conditions which can be viewed at Audioenhancement.com/terms.

Audio Enhancement will invoice equipment at the time of shipment with payment due within terms. Services completed by Audio Enhancement will be invoiced upon substantial completion with payment due within terms.

If there are any questions about this process, please reach out to our Receivables Team – receivables@audioenhancement.com

*****Audio Enhancement will not be responsible for removal of existing equipment and cabling.*****

DETAILED BILL OF MATERIALS



Quote 127095

BoM 1

Part#	Product Name	Qty	Unit Price	Total
	Category : Classroom Equipment			
	System : Cafe/kitchen			
AC-0201	3' 3.5 Male to 3.5 Male - Shielded	1	\$6.74	\$6.74
	System : Gym			
AC-0201	3' 3.5 Male to 3.5 Male - Shielded	1	\$6.74	\$6.74
	System : Gym 2			
AC-0201	3' 3.5 Male to 3.5 Male - Shielded	1	\$6.74	\$6.74
	System : 70V CZA-1300 System with Programming			
ST-XD-0601	XD Receiver with 3' Cat6	1	\$463.55	\$463.55
WP-0002	Wall Plate, WPA-702, Call Button, Emergency Button, Ambient Mic with Decora Plate	1	\$67.70	\$67.70
AC-0210	100' 3.5 Male to 3.5 Male Plenum Rated - Shielded	1	\$121.68	\$121.68
	System : 2spkr MS-700-S Optimum System with Programming			
CK-4011	Classroom Wiring Kit - With (2) 75' Plenum Speaker Wires, 35' 3.5 Plenum Shielded, 50' Purple Cat6	41	\$141.84	\$5,815.44
WP-0002	Wall Plate, WPA-702, Call Button, Emergency Button, Ambient Mic with Decora Plate	41	\$67.70	\$2,775.70
ST-SP-9102	CS-12 Ceiling Speaker, Circle Cut In, Plenum Rated, Set of 2	41	\$190.94	\$7,828.54
AM-3255.P	MS-700-S Optimum Amplifier Only with Programming (Requires PoE+)	41	\$985.00	\$40,385.00
	Miscellaneous			
AC-3209	RJ45 To Screw Terminal Block Adapter	2	\$5.15	\$10.30
	Category : EPIC System School Equipment			
	System : Virtual EPIC Head End System			
PA-0045	UPS 425VA 6-Outlet 120V for use with EPIC Kiosk	1	\$111.20	\$111.20

DETAILED BILL OF MATERIALS



Quote **127095**

Part#	Product Name	Qty	Unit Price	Total
EP-0058.P	EPIC Kiosk 2.0 with Programming	1	\$2,530.00	\$2,530.00
	System : Cafe/kitchen			
ST-AM-1028.P	CZA-1300 EPIC Common Zone Amplifier with Network Interface 1 X 300W 70V, 1U with Programming	1	\$1,014.00	\$1,014.00
ST-AM-1028.P	CZA-1300 EPIC Common Zone Amplifier with Network Interface 1 X 300W 70V, 1U with Programming	1	\$1,014.00	\$1,014.00
	System : Gym			
ST-AM-1028.P	CZA-1300 EPIC Common Zone Amplifier with Network Interface 1 X 300W 70V, 1U with Programming	1	\$1,014.00	\$1,014.00
ST-AM-1028.P	CZA-1300 EPIC Common Zone Amplifier with Network Interface 1 X 300W 70V, 1U with Programming	1	\$1,014.00	\$1,014.00
	System : Auditorium			
ST-AM-1028.P	CZA-1300 EPIC Common Zone Amplifier with Network Interface 1 X 300W 70V, 1U with Programming	1	\$1,014.00	\$1,014.00
	System : Hall 1			
ST-AM-1028.P	CZA-1300 EPIC Common Zone Amplifier with Network Interface 1 X 300W 70V, 1U with Programming	1	\$1,014.00	\$1,014.00
	System : Hall 2			
ST-AM-1028.P	CZA-1300 EPIC Common Zone Amplifier with Network Interface 1 X 300W 70V, 1U with Programming	1	\$1,014.00	\$1,014.00
	System : Hall 3			
ST-AM-1028.P	CZA-1300 EPIC Common Zone Amplifier with Network Interface 1 X 300W 70V, 1U with Programming	1	\$1,014.00	\$1,014.00
	System : Hall 4			
ST-AM-1028.P	CZA-1300 EPIC Common Zone Amplifier with Network Interface 1 X 300W 70V, 1U with Programming	1	\$1,014.00	\$1,014.00
	System : Gym 2			

DETAILED BILL OF MATERIALS



Quote **127095**

Part#	Product Name	Qty	Unit Price	Total
ST-AM-1028.P	CZA-1300 EPIC Common Zone Amplifier with Network Interface 1 X 300W 70V, 1U with Programming	1	\$1,014.00	\$1,014.00
ST-AM-1028.P	CZA-1300 EPIC Common Zone Amplifier with Network Interface 1 X 300W 70V, 1U with Programming	1	\$1,014.00	\$1,014.00
	System : Exterior 1			
ST-AM-1028.P	CZA-1300 EPIC Common Zone Amplifier with Network Interface 1 X 300W 70V, 1U with Programming	1	\$1,014.00	\$1,014.00
IN-0126	Surge Protector Wall Mount 4 Channel	1	\$55.00	\$55.00
IN-0127	Surge Protection Module, 75V Screw Term	1	\$65.00	\$65.00
	System : Exterior 2			
ST-AM-1028.P	CZA-1300 EPIC Common Zone Amplifier with Network Interface 1 X 300W 70V, 1U with Programming	1	\$1,014.00	\$1,014.00
IN-0126	Surge Protector Wall Mount 4 Channel	1	\$55.00	\$55.00
IN-0127	Surge Protection Module, 75V Screw Term	1	\$65.00	\$65.00
	System : Exterior 3			
ST-AM-1028.P	CZA-1300 EPIC Common Zone Amplifier with Network Interface 1 X 300W 70V, 1U with Programming	1	\$1,014.00	\$1,014.00
IN-0126	Surge Protector Wall Mount 4 Channel	1	\$55.00	\$55.00
IN-0127	Surge Protection Module, 75V Screw Term	1	\$65.00	\$65.00
	System : 70V CZA-1300 System with Programming			
ST-AM-1028.P	CZA-1300 EPIC Common Zone Amplifier with Network Interface 1 X 300W 70V, 1U with Programming	1	\$1,014.00	\$1,014.00
XD-0782	SAFE Alert Badge Dongle for MS-500, MS-600 and MS-700	1	\$21.00	\$21.00
	System : 2spkr MS-700-S Optimum System with Programming			
XD-0782	SAFE Alert Badge Dongle for MS-500, MS-600 and MS-700	41	\$21.00	\$861.00
SP-0300	70V Ceiling Speaker, Circle Cut In	95	\$124.80	\$11,856.00

DETAILED BILL OF MATERIALS



Quote **127095**

Part#	Product Name	Qty	Unit Price	Total
PA-0191	Volume Control 25/70V	10	\$31.45	\$314.50
SP-1091	Speaker Quam System 36VPS 70v Loudspeaker	4	\$249.60	\$998.40
SP-1028	70V Slanted, Square, Wall Mount Speaker	13	\$64.02	\$832.26
SP-1099	All-Weather Compact 2-Way Coaxial Loudspeaker with 6.5" LF	9	\$640.00	\$5,760.00
SP-1098	8" 2-way 70V Outdoor/Indoor Speaker	12	\$545.00	\$6,540.00
ST-AC-2187	EPIC Strobe Bundle	7	\$195.00	\$1,365.00
XD-0780	SAFE Alert Duress Badge	38	\$48.00	\$1,824.00
AC-0152	CAT6A by the Foot, Plenum Rated - White	1000	\$0.97	\$970.00
	Category : Services			
	System : Virtual EPIC Head End System			
SE-1002	EPIC Custom Map Development Services	1	\$525.00	\$525.00
SE-1047	Virtual Server Programming	1	\$1,700.00	\$1,700.00
SE-1024	Engineering and Design Services	1	\$1,495.00	\$1,495.00
	Category : Software Licensing			
	System : Virtual EPIC Head End System			
EP-0009	EPIC System Platform License	1	\$5,054.40	\$5,054.40
EP-0010	SAFE System License	1	\$3,994.10	\$3,994.10
EP-0022	EPIC System Intercom Paging & Bells License (Requires EP-0009)	1	\$1,460.16	\$1,460.16
EP-0034	EPIC Phone Integration	1	\$1,034.80	\$1,034.80
	Category : Training			
	System : Virtual EPIC Head End System			
EP-0035	EPIC Administrator Training	1	\$500.00	\$500.00

DETAILED BILL OF MATERIALS



Quote **127095**

Additional BOM Items

Part#	Product Name	Qty	Unit Price	Total
	Category : Classroom Equipment			
SE-0083.	Install Supply Kit	42	\$65.00	\$2,730.00
	Category : EPIC System School Equipment			
AC-0121	50' Cat6, Plenum Rated - Yellow	7	\$39.31	\$275.17
AC-0004	18/2 Spooled Speaker Wire Plenum Rated Per Foot, White	10000	\$0.71	\$7,100.00
	Category : Services			
SE-0002	Installation Labor Per Hour	17	\$86.00	\$1,462.00
SE-0038	Installation of Common Zone Amplifier	15	\$265.00	\$3,975.00
SE-0012	Lift Rental	1	\$550.00	\$550.00
SE-0025	Travel Fee	1	\$1,650.00	\$1,650.00
SE-0073	Project Management Services	54	\$120.00	\$6,480.00
SE-1068	Installation of 70V Ceiling Speaker/Equipment	109	\$180.00	\$19,620.00
SE-0032	Inspection & Commissioning	54	\$110.00	\$5,940.00
SE-0080	Installation of Kiosk	1	\$172.00	\$172.00
SE-0081	Installation of Wallplate	42	\$86.00	\$3,612.00
SE-0082	Installation of Multi-Color Strobe	7	\$172.00	\$1,204.00
TX-0006	Project Support Services	9066	\$1.00	\$9,066.00
SE-1072	Installation of 70V Wall Speaker/Equipment	13	\$375.00	\$4,875.00
SE-1073	Installation of 70V Outdoor Speaker/Equipment	21	\$425.00	\$8,925.00
SE-0035	Installation of Audio System	41	\$416.00	\$17,056.00
	Category : Contingency			
SE-0067	Optional Contingency	127	\$100.00	\$12,700.00

LIMITED WARRANTY



Audio Enhancement® is pleased to offer a limited manufacturer’s warranty (“Limited Warranty”) in which Audio Enhancement warrants that the product will be free from defects in materials and workmanship under normal use. The warranty duration depends on the product as defined by the table included with this document. The limited warranty applies only if the products are installed according to the manufacturer’s instructions, by an Audio Enhancement certified installer where specified, and there is no evidence of misuse, abuse, mishandling, neglect, unauthorized modification, or repair.

WARRANTY LENGTH	EQUIPMENT COVERED
7 Years	MS-700, MS-720, MS-775, XD Teacher Microphone (STM-24), XD Student Microphone (SHH-24), XD Receiver (SRC-24), Ceiling Speaker, Wall Speaker, and 70 V Speakers
5 Years	XD Solo®, BEAM, EPIC System Hard Drives, and EPIC Head End Appliance
3 Years	Educam360® (All Variants), EduCamPTZ (All Variants), Interactive Touch Controller (ITC), InfoView Displays, EPIC System Kiosk, and EPIC Kiosk Microphone
1 Year	Uninterrupted Power Supply (UPS), Adaptors, Mic360®, and Lithium-ion Batteries (supplied by Audio Enhancement®)
Other Manufacturers	Any product that is not specifically mentioned in one of the other categories. Products supplied as part of a system that are from other manufacturers carry their manufacturers warranty, or the Audio Enhancement one year warranty, whichever is greater.

SAFE System® (Signal Alert For Education—patent pending) is an alert notification system not intended to be a life-saving device or prevent emergencies. Audio Enhancement, our agents, employees, subsidiaries, affiliates and parent companies are exempt from liability for any loss, damage, injury or other consequence arising directly or indirectly from the application of our equipment. In the event of misuse or malfunction of the SAFE System or any of its components, Audio Enhancement, our agents, employees, subsidiaries, affiliates and parent companies are exempt from liability for any loss, damage, injury or other consequence arising directly or indirectly therefrom.

TECHNICAL SUPPORT

Audio Enhancement® Technical Support Representatives are available to assist by phone, chat, and email. With offices in West Jordan, Utah; Apopka, Florida; and Alpharetta, Georgia, we offer additional regional resources to ensure our customers have all the support to meet their needs.

Contact Support

Hours - Monday - Friday, 7:00 AM - 8:00 PM EST

Phone - 800.932.3578

Email - Support@AudioEnhancement.com

Chat and RMA - www.AudioEnhancement.com/Support/

Additional Support

Training Website - Training.AudioEnhancement.com

YouTube - [YouTube.com/user/AudioEnhancementInc](https://www.YouTube.com/user/AudioEnhancementInc)

Support Levels

Level 1 - Support for basic audio systems. Tickets are created when a phone call is made, RMA is submitted, or an email is sent to support. Level 1 support services include troubleshooting with microphones, batteries, cabling, volume levels, information requests, and basic EPIC troubleshooting and setup.

Level 2 - When a higher level of support is required, tickets are escalated to Level 2 support. This type of support includes advanced audio troubleshooting. Enhanced EPIC support including device configuration, SIP integration, LDAF integration, and configuration of VIEWPath and VIEWPath Live.

Level 3 - Final escalations are handled by Audio Enhancement engineers and developers with 10+ years of experience.

Additional Support Personnel

Audio Enhancement is headquartered in West Jordan, Utah with two offices in Apopka, Florida and Alpharetta, Georgia. Between our three offices and field services reps across the country, Audio Enhancement can provide additional onsite support when needed.

STATEMENT OF FEATURES



Project Information

Project Summary *

TX, Wichita Falls Ind Sch District, Zundy ES, EPIC

Request design team to design your school? *

Yes

Will this project be using a Contract? *

No

Will Audio Enhancement be Installing? *

Yes

Does this project utilize Davis Bacon rates or Prevailing Wage?

No

Site Status at Any Point During Implementation *

Retrofit of an existing building

Are there any drawings or specifications we are required to meet for this project? *

No

Are we reusing existing intercom speakers?

No

Will Audio Enhancement be Commissioning?

Yes