

**STEPHENVILLE INDEPENDENT SCHOOL DISTRICT**  
STEPHENVILLE HIGH SCHOOL EXPANSIONS AND RENOVATIONS  
September 17, 2018

# SCHEMATIC DESIGN PRESENTATION



ACKNOWLEDGMENTS	01
NARRATIVE	02
EXISTING FLOOR PLAN	03
SITE PLAN AND FLOOR PLANS	04
PERSPECTIVES	05
SCHEDULE & PHASING	06



# STEPHENVILLE INDEPENDENT SCHOOL DISTRICT

## STEPHENVILLE HIGH SCHOOL EXPANSIONS AND RENOVATIONS

### Superintendent

Matt Underwood

### Stephenville ISD Board of Trustees

Dr. Ann Calahan, Ph.D.	Board President
Scott E. Osman	Board Vice President
Sherrie Evans	Board Secretary
Dr. Robert Barberee	Board Member
Keri Vanden Berge	Board Member
Cole Gilliam Parks	Board Member
Dr. Ed Dittfurth	Board Member

### Project Design Team

Daren Kirbo, AIA Principal, Huckabee
Will Smith, AIA Associate Principal, Huckabee
Casey Casstevens, AIA Director of Design Fort Worth, Huckabee
Mike King, AIA Planner, Huckabee
Joshua Cogburn Project Leader, Huckabee
Lauren Hoyle, RID Interior Designer, Huckabee
Stephanie Colwell, AIA Architect, Huckabee

### Civil Engineering/Landscape

Pacheco Koch  
Fort Worth, TX

### MEP Engineering

Romine, Romine & Burgess, Inc.  
Fort Worth, TX

### Structural Engineering

Huckabee  
Fort Worth, TX

### Technology/Security

Crux Technology and Security Solutions  
Fort Worth, TX

### Field/Turf Design

Sports Design Group  
McKinney, TX

### Acoustics

BAi  
Dallas, TX

### Food Service

Foodservice Design Professionals  
Dallas, TX

### Roofing

Armko Industries, Inc.  
Fort Worth, TX



STEPHENVILLE INDEPENDENT SCHOOL DISTRICT  
STEPHENVILLE HIGH SCHOOL EXPANSIONS AND RENOVATIONS

Stephenville ISD Design Committee Members

Matt Underwood	Superintendent	Mindy Pope	Theatre Arts Teacher
Stephanie Traweek	Principal	Emily McLemore	Visual Arts Teacher
Keith Starnes	Director of Maintenance	Jerod Womack	Athletic Director
Stephanie Atchley	Director of Special Education	Alan Thorpe	Head Girls Basketball Coach, Head Golf Coach, Cross Country
Lacy Gilley	Occupational Therapist	Bill Brooks	Head Boys Basketball Coach
Kimberly Kelsey	Dance Teacher	Russell Mayes	Head Softball Coach
Michael Childs	Director of Bands	Kristi Mayes	Head Cross Country, JV Girls Basketball, Softball Coach
Michel Wimberly	Associate Director of Band and Percussion Specialist	Debby Winder	Athletic Trainer
Meghan Lockwood	Assistant Band Director	Ryan Best	Director of Career & Technical Education
Arielle Sword	Head Choir Director		





## STEPHENVILLE INDEPENDENT SCHOOL DISTRICT

### STEPHENVILLE HIGH SCHOOL EXPANSIONS AND RENOVATIONS

In May 2018, the voters in Stephenville ISD approved a \$60.8 million bond referendum that includes the expansion and renovation of Stephenville High School. Over the course of several meetings, Huckabee engaged with Stephenville ISD administrators to gain an understanding of the preferred spaces and adjacencies required, in order to develop a floor plan concept.

The programs included in the proposed additions include:

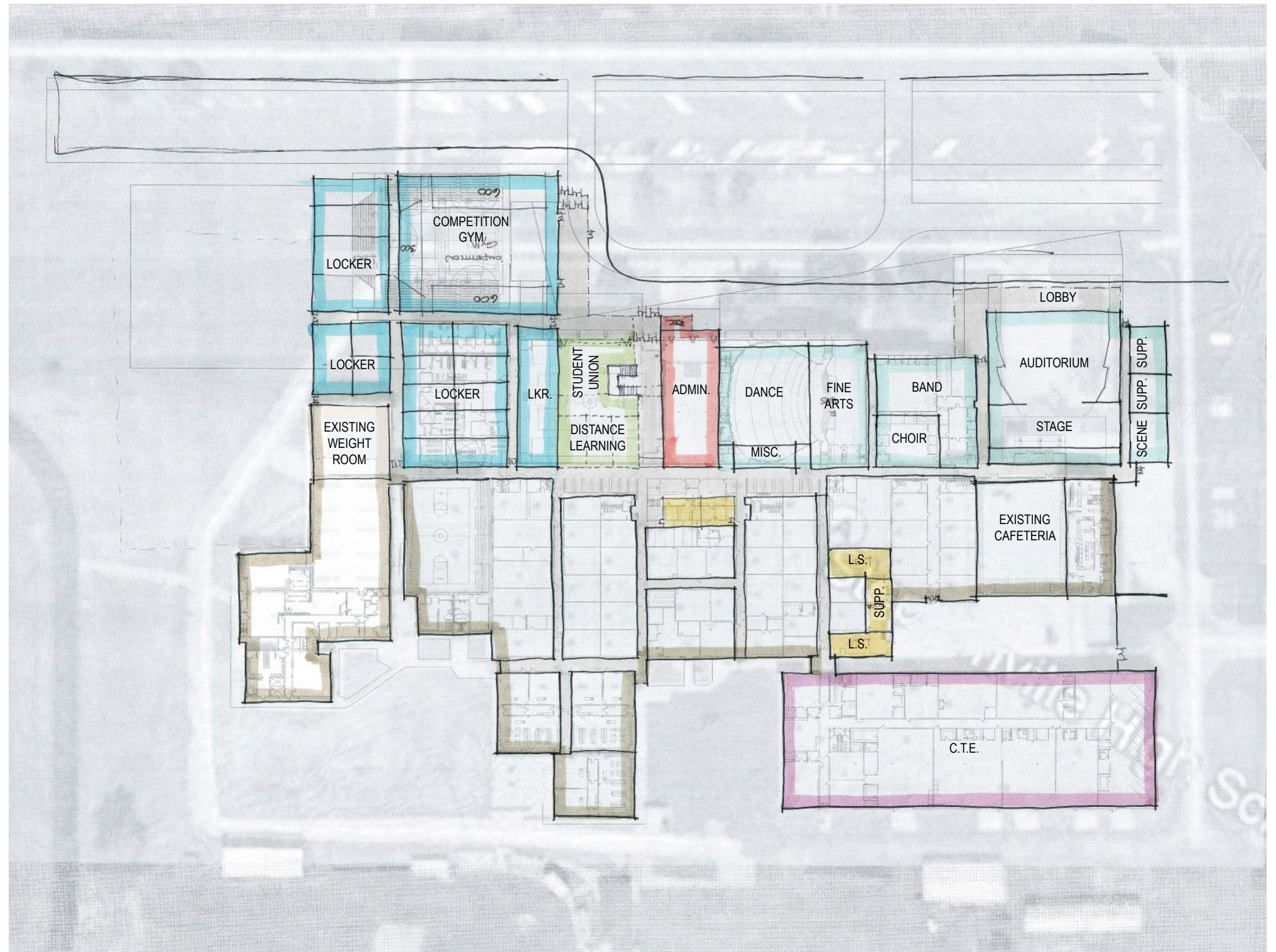
- New competition gymnasium and locker rooms
- New auditorium and support spaces.
- New softball complex
- New band practice field
- New Agriculture Science Center

Areas within the building that will be renovated include:

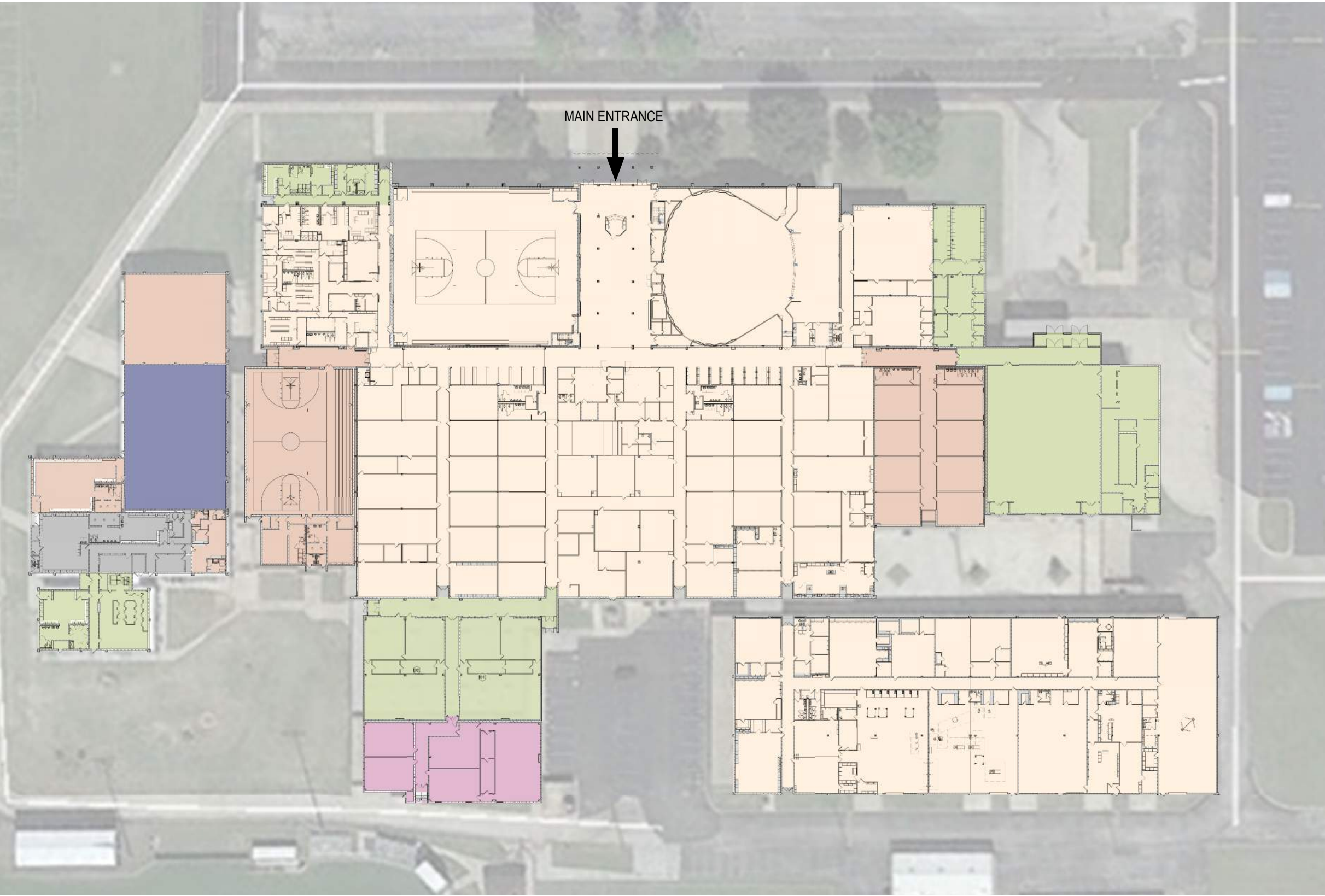
- Vocational Wing
- Existing Auditorium - remodeled for Band, Choir, support spaces
- Existing Band Hall - remodeled for Art, Theater Classroom, and support spaces
- Existing Lobby Space - remodeled for Administration Offices and support spaces
- Existing Administration - remodeled for Counselor Suite
- Existing Gymnasium - remodeled for Student Commons, circulation to Library, and new entry Lobby
- Existing Home Economics - converted into Life Skills
- Training Room and Football Locker Rooms
- Existing Locker Room wing for Basketball, Soccer, Cheer
- New finishes in main Corridors

In addition to these additions and renovated areas, a new controlled vestibule will be constructed, and an enclosed corridor will be built to connect the main high school building to the renovated Vocational wing. The campus will also receive a fire sprinkler system installed throughout, ADA improvements, and security upgrades.

Huckabee values the opportunity to serve Stephenville ISD and appreciates the exemplary collaborative effort from SISD.



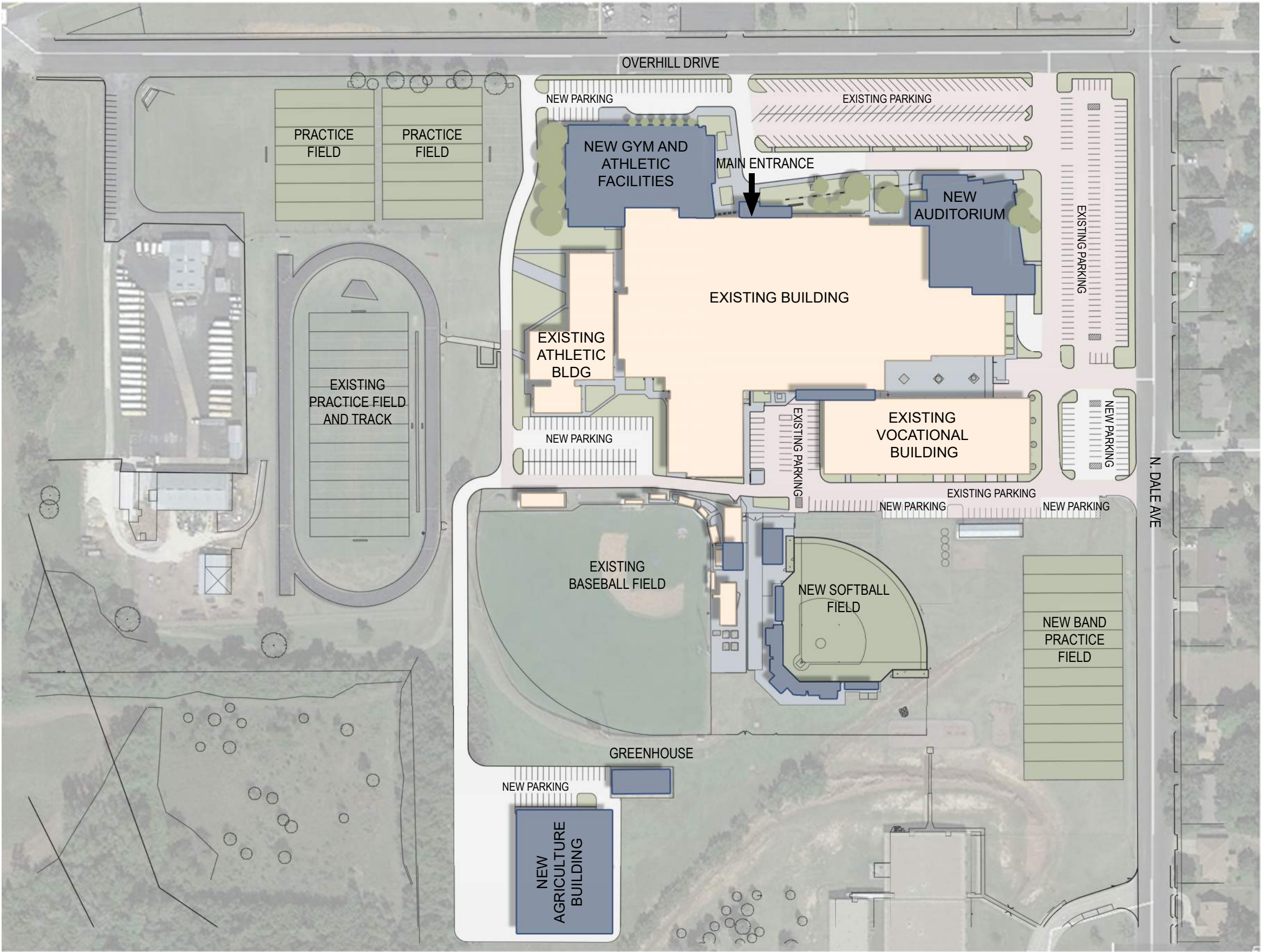




COLOR LEGEND

- 1974 - Original Build
- Built between 1974-1988
- 1988
- 1995
- 1998
- 2012





COLOR LEGEND

- Existing Buildings
- Existing Pavement
- Grass
- New Buildings
- New Pavement/Roads
- Playing Fields
- Sidewalks
- Trees

EXISTING PARKING COUNT PRIOR TO CONSTRUCTION: 456

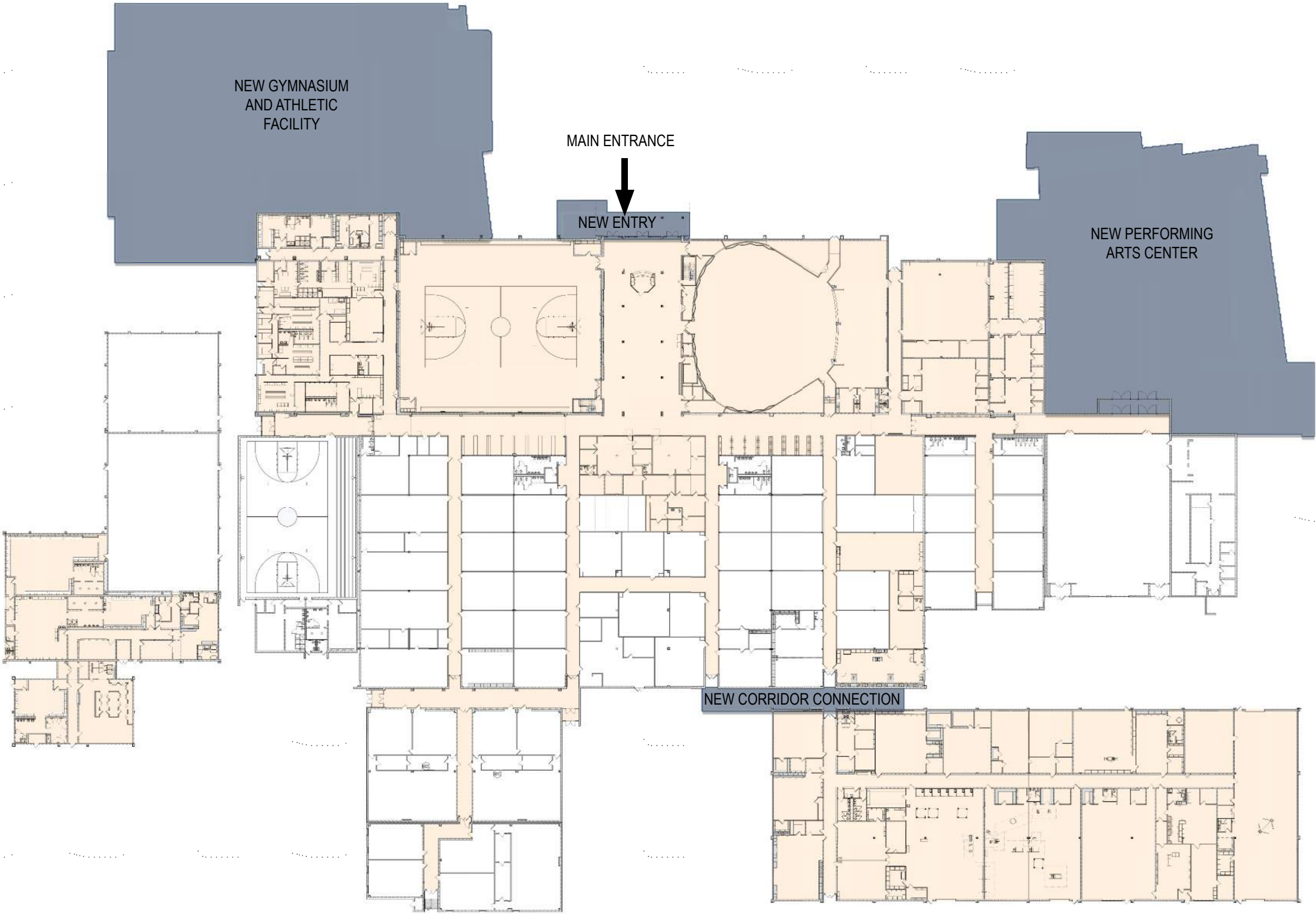
PARKING COUNT NEW DESIGN: 518  
REMAINING EXISTING: 329  
NEW SPACES: 161  
NEW SPACES AT AGRICULTURE BUILDING: 28



COLOR LEGEND

Existing Building  
to be Remodeled

New Construction







- COLOR LEGEND**
- Academic Space
  - Academic Support
  - Administration
  - Administration Support
  - Athletic Space
  - Athletic Support
  - Circulation
  - CTE / Agriculture
  - Dining
  - Fine Arts
  - Fine Arts Support
  - Support Space



**Huckabee**

STEPHENVILLE HIGH SCHOOL | STEPHENVILLE INDEPENDENT SCHOOL DISTRICT

WILLIAM GARRISON SMITH NOT FOR REGULATORY APPROVAL, PERMITTING, OR CONSTRUCTION

FLOOR PLAN - OVERALL - 4.3





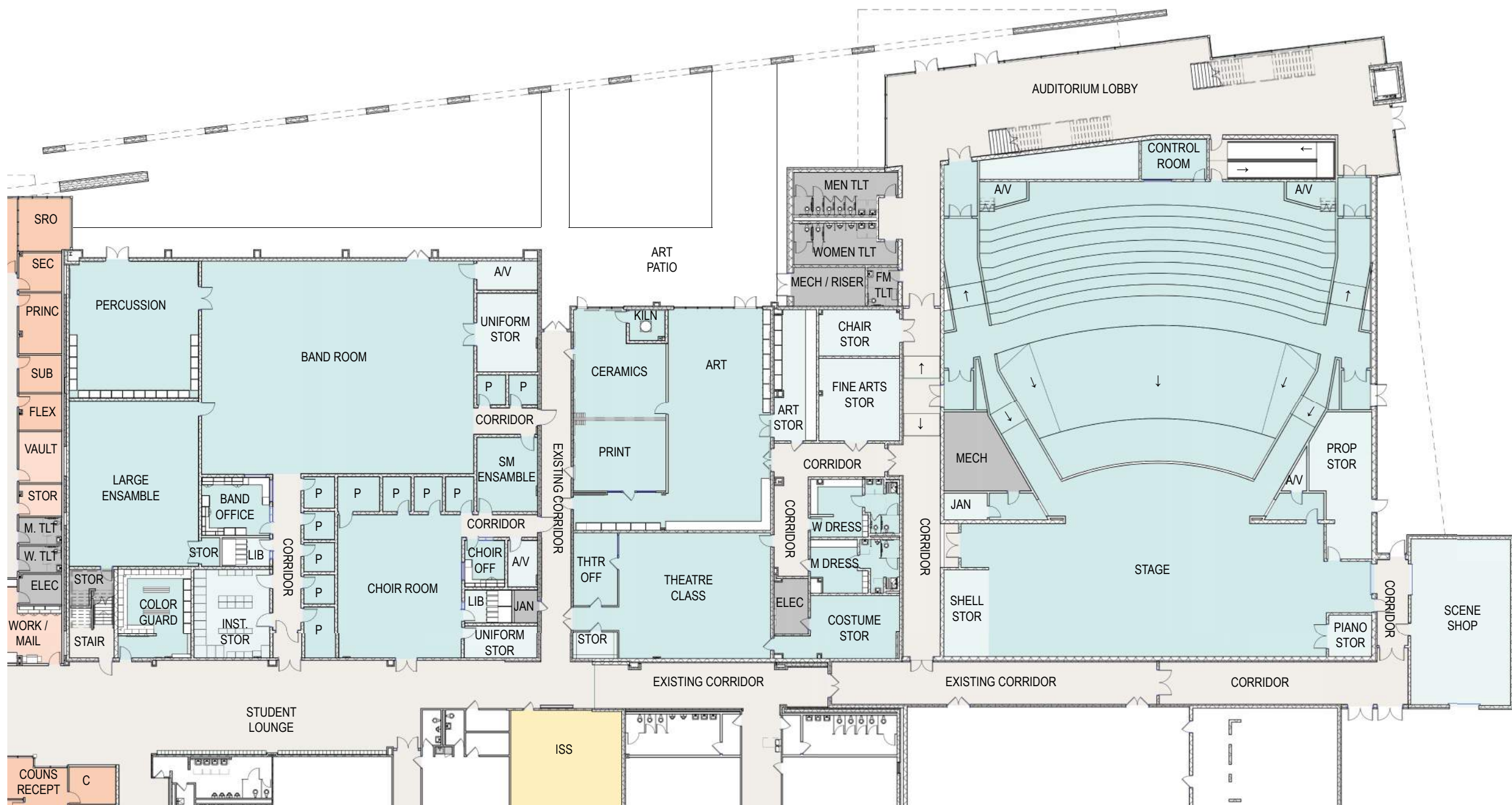
COLOR LEGEND

- Academic Space
- Administration
- Administration Support
- Athletic Space
- Athletic Support
- Circulation
- Dining
- Support Space



COLOR LEGEND

- Academic Support
- Administration
- Administration Support
- Circulation
- Fine Arts
- Fine Arts Support
- Support Space



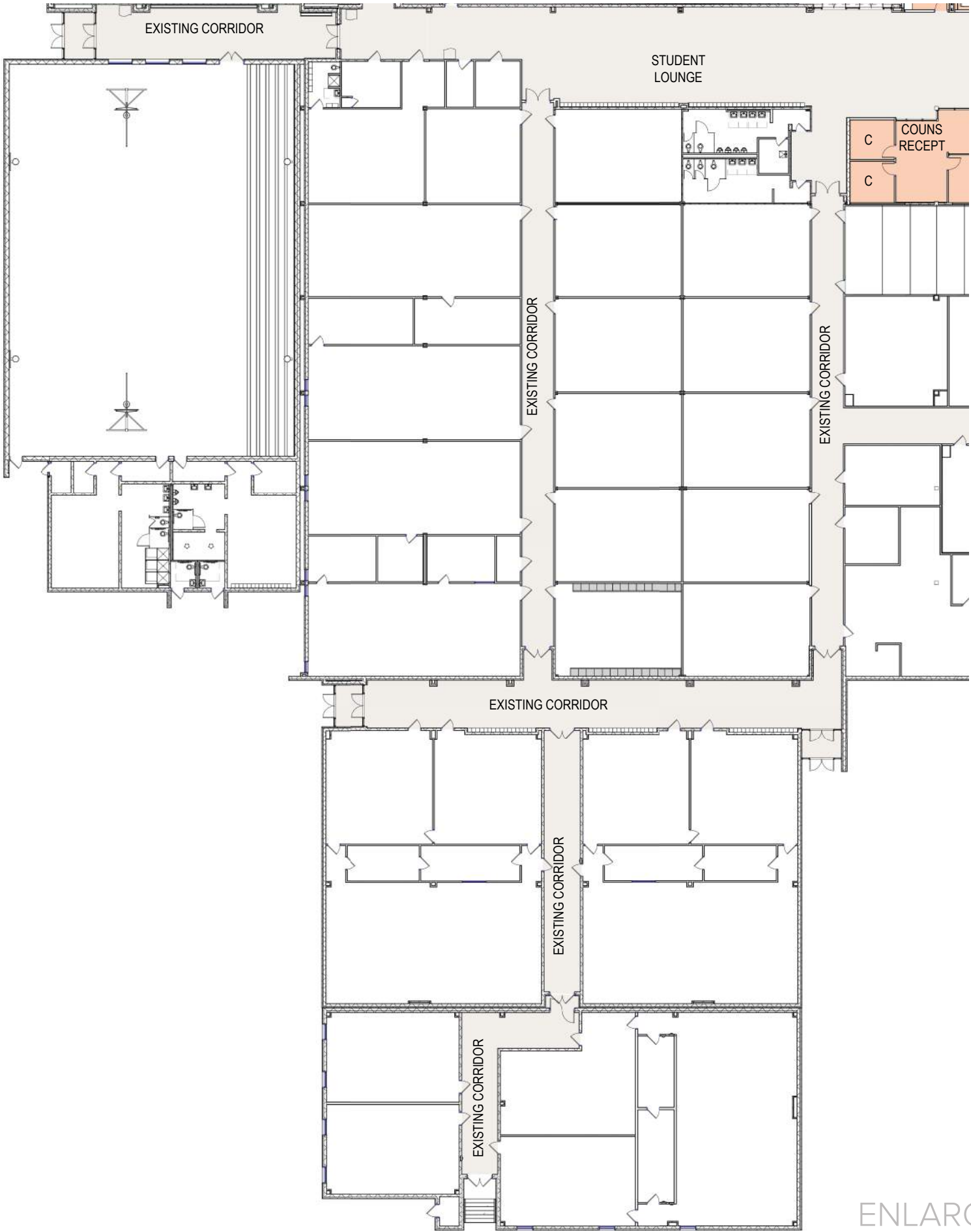
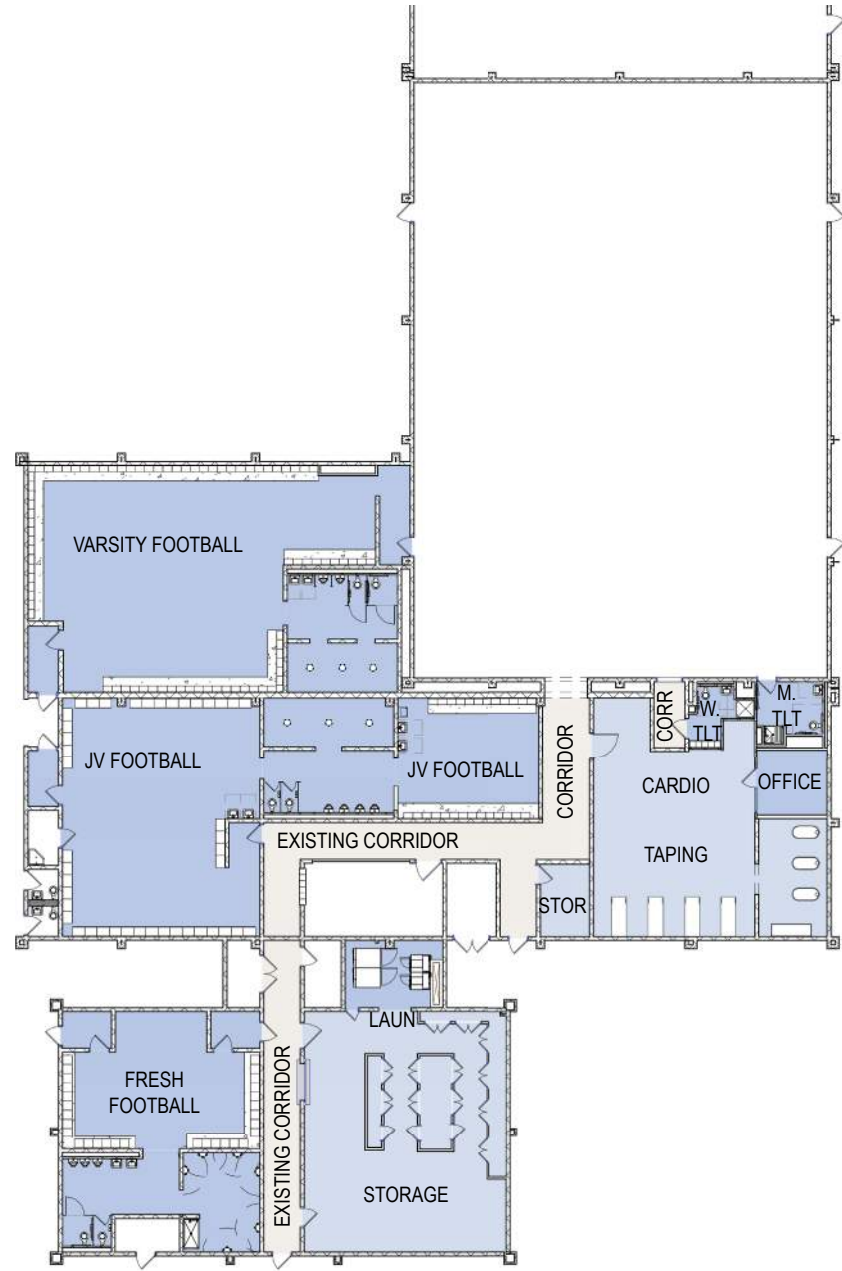
**Huckabee**

STEPHENVILLE HIGH SCHOOL | STEPHENVILLE INDEPENDENT SCHOOL DISTRICT

WILLIAM GARRISON SMITH NOT FOR REGULATORY APPROVAL, PERMITTING, OR CONSTRUCTION

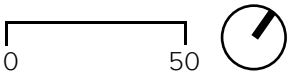
ENLARGED FLOOR PLAN - FINE ARTS - 4.5





COLOR LEGEND

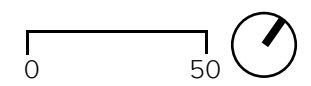
- Administration
- Administration Support
- Athletic Space
- Athletic Support
- Circulation
- Support Space



ENLARGED FLOOR PLAN - ATH. - 4.6

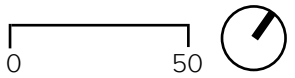
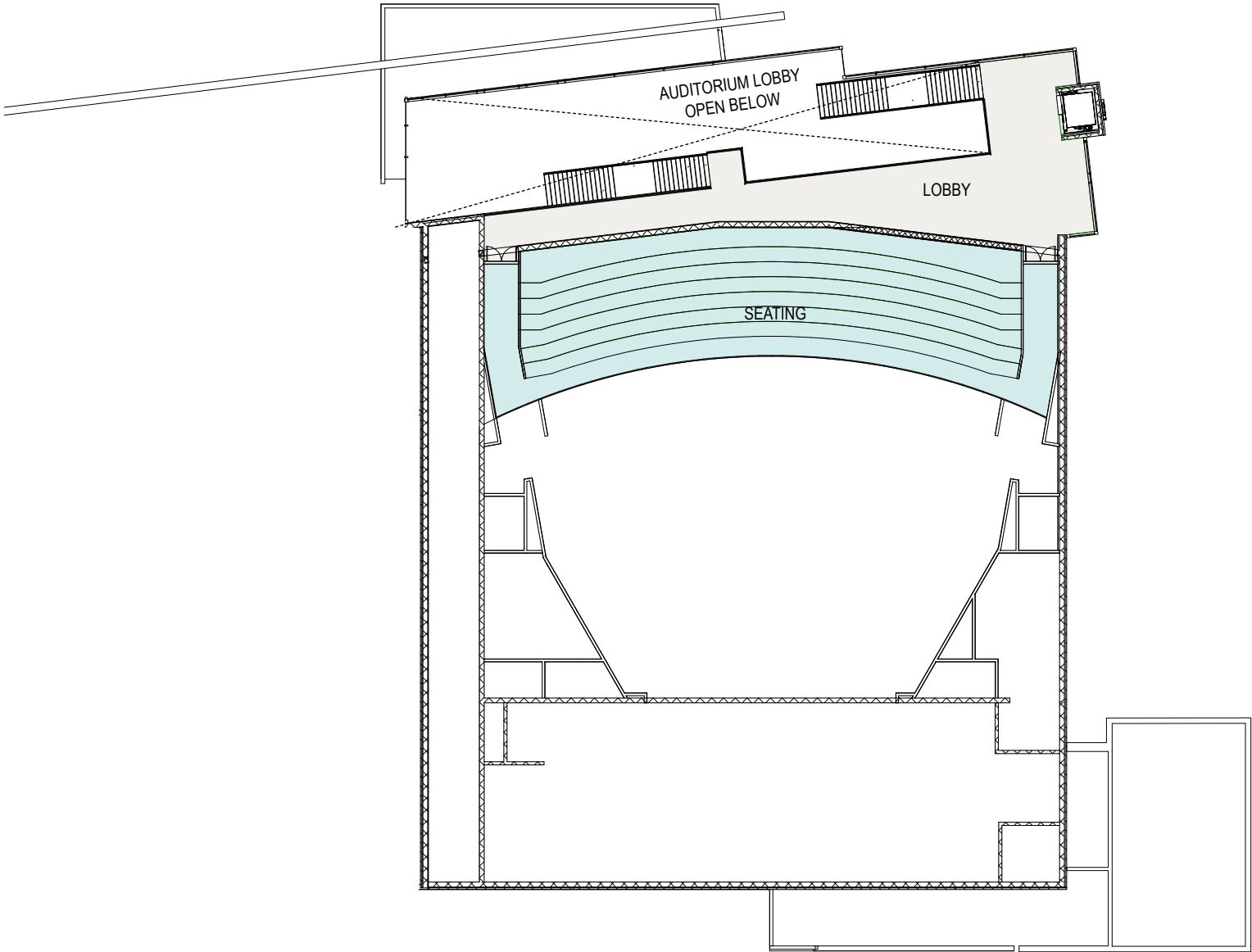


COLOR LEGEND	
<span style="display:inline-block; width:15px; height:15px; background-color:#FFD700; border:1px solid black;"></span>	Academic Space
<span style="display:inline-block; width:15px; height:15px; background-color:#FFD700; border:1px solid black;"></span>	Academic Support
<span style="display:inline-block; width:15px; height:15px; background-color:#FFA500; border:1px solid black;"></span>	Administration
<span style="display:inline-block; width:15px; height:15px; background-color:#FFA500; border:1px solid black;"></span>	Administration Support
<span style="display:inline-block; width:15px; height:15px; background-color:#D3D3D3; border:1px solid black;"></span>	Circulation
<span style="display:inline-block; width:15px; height:15px; background-color:#90EE90; border:1px solid black;"></span>	CTE / Agriculture
<span style="display:inline-block; width:15px; height:15px; background-color:#87CEEB; border:1px solid black;"></span>	Fine Arts
<span style="display:inline-block; width:15px; height:15px; background-color:#ADD8E6; border:1px solid black;"></span>	Fine Arts Support
<span style="display:inline-block; width:15px; height:15px; background-color:#808080; border:1px solid black;"></span>	Support Space



COLOR LEGEND

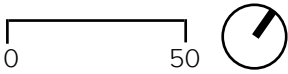
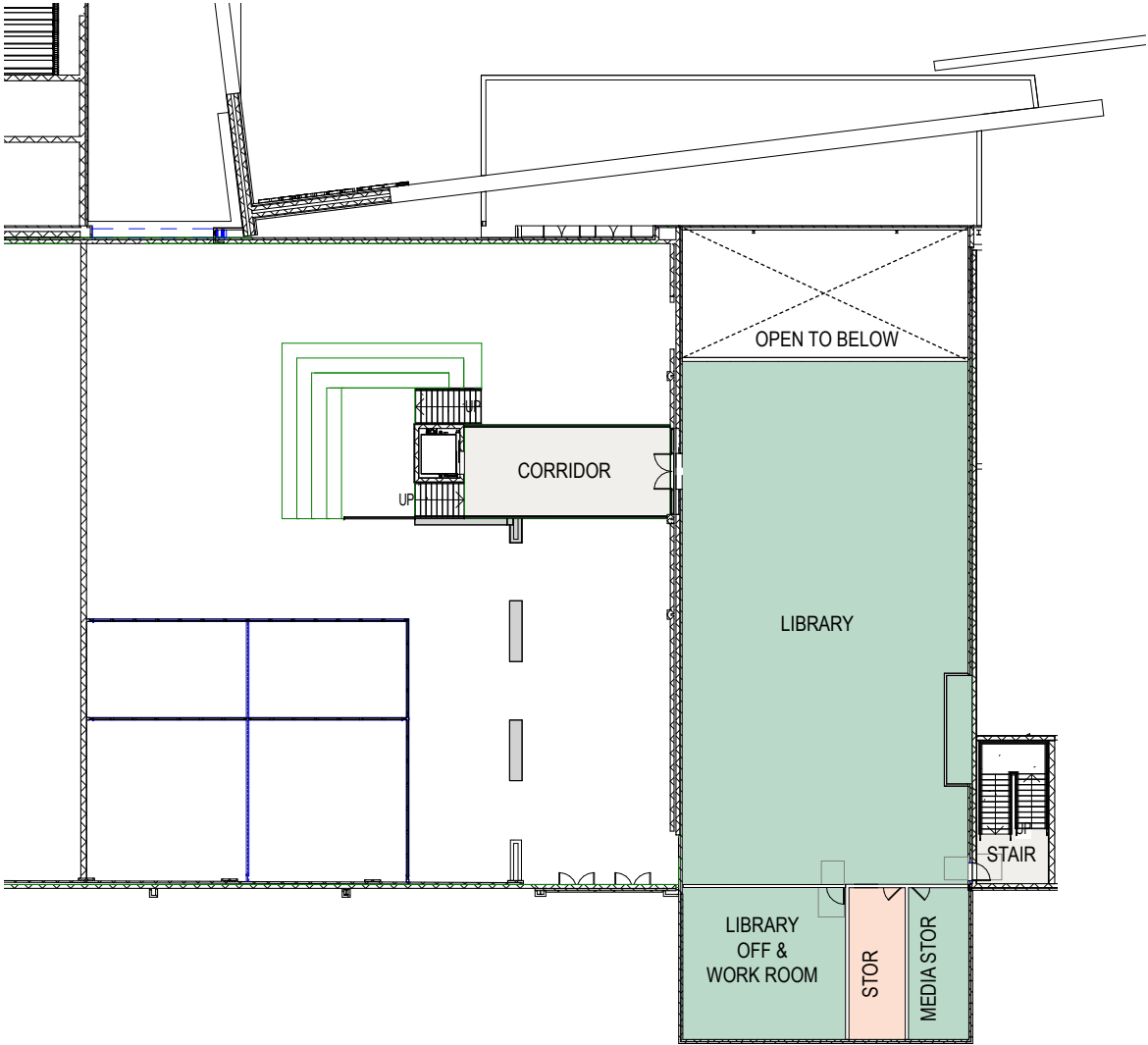
- Circulation
- Fine Arts





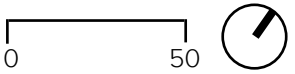
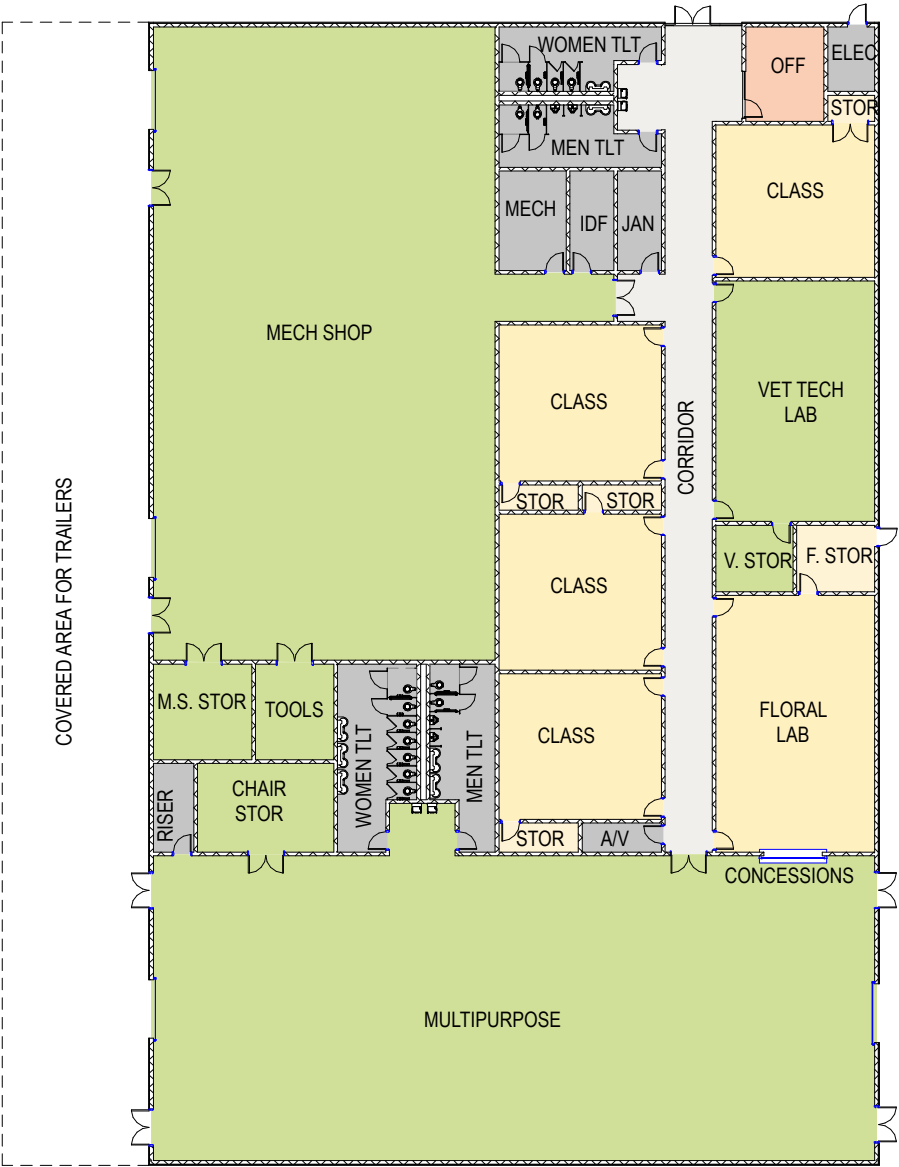
COLOR LEGEND

- Administration Support
- Circulation
- Library



COLOR LEGEND

- Academic Space
- Academic Support
- Administration
- Circulation
- CTE / Agriculture
- Support Space

























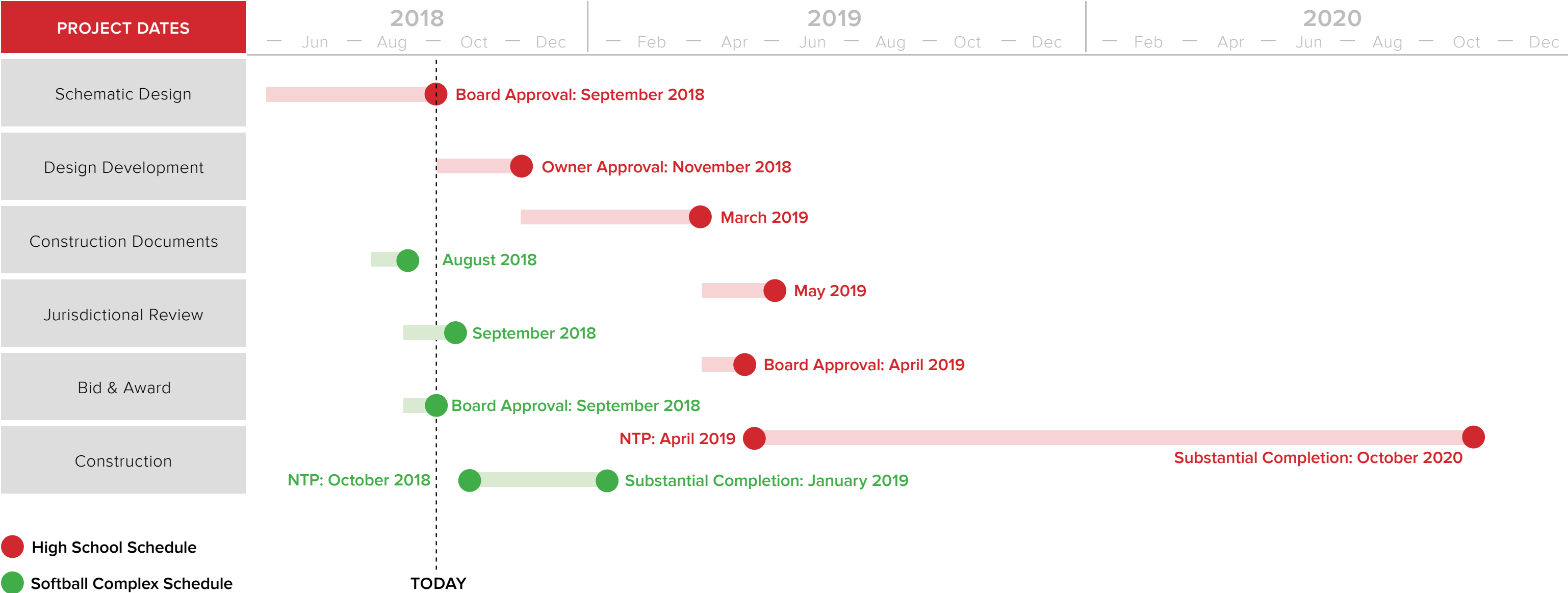








STEPHENVILLE INDEPENDENT SCHOOL DISTRICT  
STEPHENVILLE HIGH SCHOOL EXPANSIONS AND RENOVATIONS







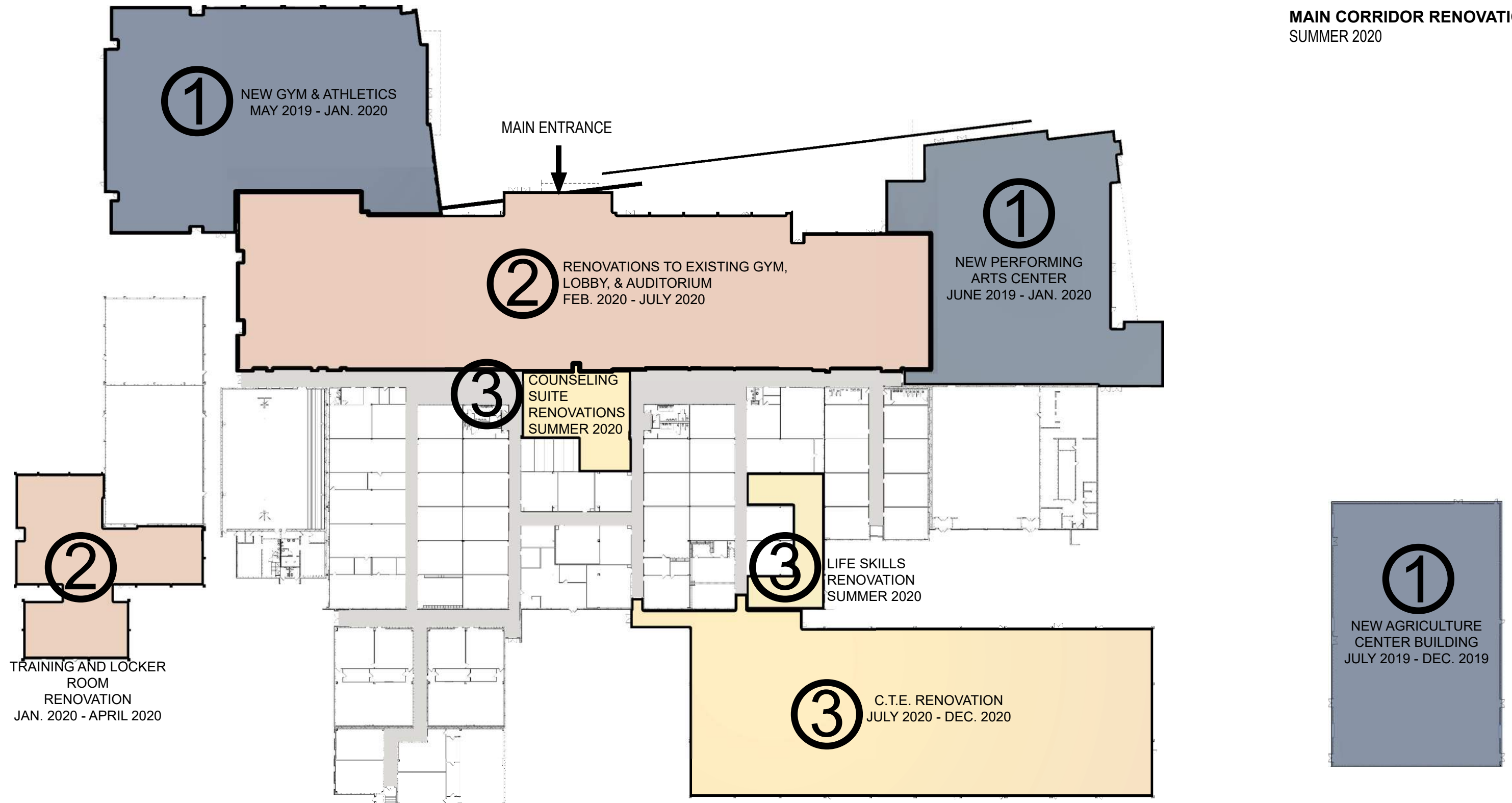
# STEPHENVILLE INDEPENDENT SCHOOL DISTRICT

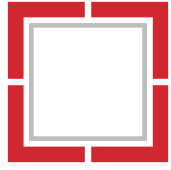
## STEPHENVILLE HIGH SCHOOL EXPANSIONS AND RENOVATIONS

### ADDITIONAL SCOPE:

**SPRINKLER INSTALLATION AND  
NEW CEILINGS**  
SUMMER 2019

**MAIN CORRIDOR RENOVATIONS**  
SUMMER 2020





**MORE THAN ARCHITECTS**