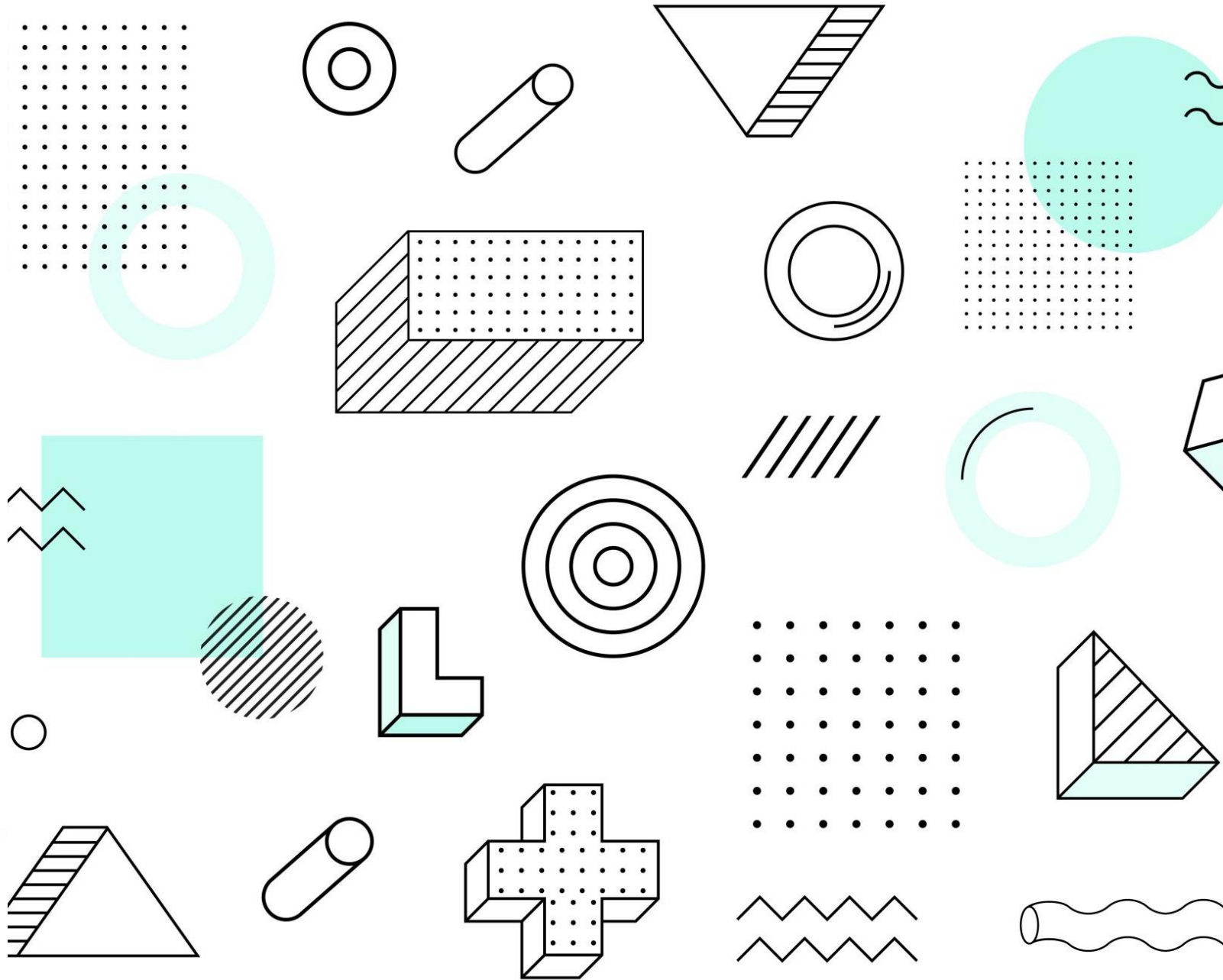


Superintendent's Report



3/11/24

Strategic Planning Update



- Phase III – Focus on the Future work is underway
- Mission and Vision
- 3-5 Critical Goal Areas
- Establishing Goals and Objectives

Community Engagement Report

The District recently completed the Inclusive Engagement portion of the Strategic Planning process and is excited to share the results of the feedback, discussions, and input provided by stakeholders throughout the Geneva 304 community. Below you will find a link to the report, along with the results of our community survey. In addition, you will find a link to the video of the Board of Education meeting on Monday, February 26 where Dr. Harris of HYA Associates presented the results from the Inclusive Engagement phase.

As the District moves to Phase 3: Focus on the Future, a team of District leaders charged with facilitating the Strategic Planning process will analyze the findings, develop Vision and Mission statements, and develop a list of 3-5 strategic goals for the District. Additional information regarding this process will be shared at future Board of Education meetings with a formal draft of the Strategic Plan presented at the Board of Education's regular meeting on Monday, May 13.

[Community Engagement Report Presentation \(Feb 26\)](#)

[Video of the Presentation \(at 42:44\)](#)

[Geneva Engagement Report - January 2024 - from stakeholder forums](#)

[Community Survey Results](#)

PTO Leadership Insights and Feedback

- Great Opportunity for Community Engagement!
- Insights and Reflections Regarding Key Issues:
 - Strategic Planning Work & Goals
 - Emergency and E-Learning Days
- More Opportunities to Come





State Assessments are Beginning

- Recently Completed Assessments
 - ACCESS for English Language Learners
- Upcoming Assessments
 - Illinois Assessment of Readiness (IAR)
 - Reading, Writing, and Math in Grades 3-8
 - Illinois Science Assessment (ISA)
 - Grades 5, 8, 11
 - SAT Suite of Assessments
 - Reading, Writing, & Math Grades 9-11
 - Illinois Physical Fitness Assessments
 - Grades 5,7,10

Generative Artificial Intelligence (AI)

A white humanoid robot is positioned in the lower-left foreground, looking towards the right. The background is a large, glowing blue digital display with intricate circuit patterns and binary code (0s and 1s) scattered across it. The overall scene is futuristic and technological.

- Rapidly Evolving Area
- Discussion and collaboration with key staff stakeholder groups
- Development of a guidance document for staff (early adopters)
 - Guiding Principles, Responsible Use, Considerations, Safety, etc.
- Much more conversation ahead