

MEMORANDUM

DATE: NOV 6, 2024

TO: ELIZA DIAZ
SUPERINTENDENT
BRACKETT INDEPENDENT SCHOOL DISTRICT

FROM: ED JOHNSON
CHIEF EXECUTIVE OFFICER, CSP

CC: SITA JOHNSON, PRESIDENT, CSP
LUPE GARZA, REGIONAL SALES MGR, CSP

SUBJECT: SCOPE OF WORK –RHINOWARE® LOCKDOWN SYSTEM PURCHASE AND INSTALLATION –
BRACKETT INDEPENDENT SCHOOL DISTRICT

We are pleased to provide our detailed unit price estimate to accomplish the scope of work described below. Our scope of work is based upon information received from Brackett ISD (BISD) and Campus Safety Products, LLC's (CSP) product specifications.

RhinoWare Lockdown System is the nation's most trusted and fully code-compliant shelter-in-place lockdown apparatus. RhinoWare is not only installed in schools and school districts across the country, but is also the trusted shelter-in-place solution for many local, state, and federal government office buildings, military installations (U.S. Army, U.S. Navy), banks, manufacturing facilities, international airports, even the United Nations Headquarters complex in Geneva, Switzerland.

RhinoWare Lockdown System is completely self-contained and extremely simple to operate, even under duress. In fact, the product was designed such that even a kindergartner, hearing gunshots, can turn her classroom into a saferoom in just one second. RhinoWare Lockdown System is widely (and oftentimes enthusiastically) accepted by both law enforcement and fire officials nationwide. Along with both public and private schools, RhinoWare is also trusted by DFW Airport, Dallas County Government and companies like H-E-B and Whataburger Headquarters in San Antonio.

We are both pleased and honored that Brackett ISD will count itself among many Texas Independent School Districts to implement RhinoWare Lockdown System! This Scope of Work and Proposal will include RW4000 units to be installed at Jones Elementary, Brackett Secondary School, and BISD District offices.

The proposed install locations of each RhinoWare unit was determined in close collaboration over several hours with Superintendent Eliza Diaz, reviewing each campus floor plan and considering all potential access scenarios. We believe that the selected strategic install locations best secures/hardens every area within each campus facility.

Scope of Work

RhinoWare® Lockdown System Installation

1. Provide and install RhinoWare Lockdown System® (RW4000) on the interior-facing side of doors.
 - a. See attached renderings and specifications of RW4000.
 - b. RW4000 (for classrooms, multi-use rooms, and offices) will utilize the RhinoWare Key to unlock the engaged/locked down RhinoWare units.
2. Provide and install RhinoWare-associated Floor Plates.
 - a. RhinoWare Floor Plates will be installed on any type of flooring except porcelain tile, for the purposes of this SOW.
 - b. Cut and remove a small swatch of the existing carpet (if carpet is present on the interior facing side of the door) as needed in order to expose underlying substrate and drill anchor holes.
 - c. Follow asbestos mitigation procedures when installing floor plates in the event floor tiles containing asbestos are present.
 - d. Cut/notch out existing substrate for floor slot min ½" wide by 1" long by ½" deep.
3. Install anchors and associated hardware as per CSP install requirements.
4. As part of the CSP Quality Assurance Procedure, all installed RhinoWare units will be tested to ensure smooth, non-binding operation and that they operate according to CSP requirements.
5. Once installation process is completed, the CSP project manager will accompany a BISD representative to inspect and approve the installation. If issues with the product or installation need to be corrected in order to obtain customer approval, those issues will be corrected to customer satisfaction on the spot at the time of inspection.
6. If, at a later date, doors are changed or moved and re-installation and re-certification of RhinoWare units is required, this shall be performed either by CSP or a CSP-certified RhinoWare installer. Cost for re-installation and re-certification will be determined at that time.

General Notes

1. Product will be shipped and installation scheduled once Purchase Order is received.
2. **BISD will be invoiced for Product shipped/received at time of shipment. BISD will be invoiced for all labor-related cost on a weekly basis once installation commences.**
3. Installation should not take more than three weeks, once commenced. If installation is performed during the school year, or when class is in session, then installation will be done after hours. BISD will provide access to facilities as required.
4. **Due to our current committed installation schedule for Fall/Winter 2024, CSP would like to propose that the commencement of installation at BISD begin as soon as possible, following the confirmation of necessary funding.**
5. Once installation is completed, the CSP project manager will schedule a walkthrough with Superintendent Diaz (or a BISD representative with designated authority) to inspect each installed Rhino. If feasible, this inspection should take place immediately upon installation completion for each campus. Together, the CSP project manager and Superintendent Diaz/BISD representative will inspect the work and approve the invoice for payment. At this point, a Certificate of Installation, including campus name, the total number of RhinoWare units installed at that campus, door numbers or room names (if no door number is noted), and that all products were installed and are operational as per CSP installation requirements will be issued for BISD' records.
6. This proposal does not include painting, rotten wood replacement, flooring, or door replacement not specified in this SOW.

Proposal for Acquisition and Installation of RhinoWare Lockdown System

Item Number	Description	Qty	RhinoWare Cost	RhinoCare Cost/YR	Labor Cost Total	Total
RW4000	Provide and Install RhinoWare Lockdown System V4	195	\$87,750.00		\$39,000.00	\$126,750.00
RHINOCARE	RhinoCare Annual Inspection (Five years)	195		\$4,875.00		\$24,375.00
RW-KEY	RhinoWare Cylinder Lock Key (Dimpled high security). Keys will also be provided to Kinney County Sheriff's Office at no charge.	10	\$160.00			\$160.00
RW-SHIP	UPS Freight Shipping	1	\$1,950.00			\$1,950.00
Grand Total		195				\$153,235.00

We are available for review of this estimate at your convenience. Should you have any questions or need additional information, please do not hesitate to contact me directly at (919) 627-5665 or (855) 946-4378, ext 700.

Regards,



Ed Johnson, CEO
 Campus Safety Products, LLC

AUTHORIZED BY: _____ TITLE: _____

DATE: _____ PURCHASE ORDER NUMBER: _____

ACCOUNTING POC: _____

ACCOUNTING POC EMAIL: _____

CAMPUS INSTALL COMPLETION NOTIFICATION

LETTER OF ACCEPTANCE

INSTALLATION OF RHINOWARE® LOCKDOWN SYSTEM

DATE: _____

CAMPUS NAME: _____

NUMBER OF RHINOWARE UNITS INSTALLED:

RW3000-CL _____

RW4000 _____

ORGANIZATION: BRACKETT ISD

I HAVE INSPECTED THE INSTALLATION OF RHINOWARE® LOCKDOWN SYSTEM AT THE FACILITY REFERENCED ABOVE AND AM SATISFIED THAT ALL UNITS WERE INSTALLED CORRECTLY AND TO MANUFACTURER SPECIFICATIONS AND OPERATE ACCORDING TO CUSTOMER EXPECTATIONS. ALL DEBRIS HAS BEEN DISPOSED OF AND WORK AREAS ARE CLEAN.

SIGNATURE

PRINT FULL NAME

TITLE



The RhinoWare® Door Barricade System locks down any room which can be made a safe room at a moments notice in the event of an Active Shooter, Armed Intruder incident or when a possible violent situation could be happening. The simplicity of use, combined with high force resistance has made RhinoWare® the most popular security product in the marketplace. Fire Marshals, Police Chiefs, and Security Directors can rest easy knowing it is the only door barricade system that is completely code compliant.

Completely code compliant meeting all current Applicable Building, Fire, Life Safety, and ADA codes as well as federal accessibility laws.



RhinoWare® V4

Completely code compliant meeting all current applicable building, fire, life safety, and ADA codes as well as federal accessibility laws.

- Corporate office, manufacturing, and distribution facilities
- Airports and mass transportation facilities
- Banks/Financial Institutions
- Medical centers, Healthcare Facilities and Hospitals
- State/Federal Government Agencies and Local Municipalities
- Military Installations
- Law firms
- Preschool, K-12, and Higher Education facilities
- Assisted Living Centers, Retirement Homes and Intellectual Disability Facilities
- Care homes and sheltered housing
- Places of worship
- Restaurants and retail outlets
- Sports arenas and stadiums, casinos, and large entertainment complexes

RhinoWare® Connect

Differentiates itself with the immediate notification of RhinoWare® Door Barricade System engagement. This alerts the customers' Physical Security Management System, which can then trigger video surveillance of the lockdown area as well as mass notification of possible shooter presence, lockdowns, etc. Also, a standalone notification platform is offered.

- Connects via WI-FI to the RhinoWare® Connect cloud-based server
- RhinoWare® Connect server sends out notifications, either in standalone mode or to the backend physical security management system



Executive Summary

Campus Safety Products, LLC., (CSP), headquartered in Durham, North Carolina, has developed and offers the highly intuitive and secure emergency/active shooter lockdown device, branded as RhinoWare® Door Barricade System, for the purposes of locking down classrooms, offices, break rooms, conference rooms, utility/storage rooms, and any other room in which individuals can "shelter-in-place" at a moment's notice. In addition to the RhinoWare® suite of products, CSP also offers professional services which primarily focus on comprehensive all-hazard risk preparedness assessments, planning development, implementation, and training.

Differentiators

- Self-contained and activated instantly and intuitively with no training required
- One second disengagement for first responders/onsite security from outside the room with high security dimpled RhinoWare® Key
- Highly effective on inward, outward, and free-swinging doors
- NFPA 3000 (PS) Compliant – Meets all requirements outlined in Standard for an Active Shooter/Hostile Event Response (ASHER) Program
- Fire Code Compliant (NFPA 80) – UL 10B, UL 10C, NFPA 252, and CAN/ULC 5104 Certified on fire rated doors up to 90 minutes
- Life Safety Code Compliant (NFPA 101) – With RhinoWare® engaged, unlatching the door from inside the room is accomplished with one single motion operation
- ADA Code Compliant – RhinoWare® is operable without tight grasping, tight pinching, or twisting of the wrist. Means of engagement is located at or near the door handle, between 34 and 48 inches above the finished floor
- Optional RhinoWare® Connect, wireless notification of engagement/lockdown to any backend monitoring system



919.741.4478



info@campussafetyproducts.com



campussafetyproducts.com





VANCOUVER, BC: 877.461.8378 ph. | 604.527.8368 fx.
LOS ANGELES, CA: 909.483.0250 ph. | 909.483.0336 fx.
WASHINGTON, DC: 540.636.9445 ph. | 540.636.9414 fx.
TULSA, OK: 918.437.8333 ph. | 918.437.8487 fx.
TORONTO, ON: 416.550.9280
WEBSITE: WWW.QAI.ORG

FIRE DOOR LISTING PROGRAM

Customer: Campus Safety Products, LLC
Class: Fire-Resistant Door Hardware Component
Location: Durham, North Carolina
Website: www.campussafetyproducts.com

Listing No. F454-1
Project No. F454-1 Edition 2

Effective Date: December 18, 2018
Last Revised Date: November 28, 2022

Standards: UL 10B *Fire Tests of Door Assemblies*
UL 10C *Positive Pressure Fire Tests of Door Assemblies*
NFPA 252 *Standard Methods of Fire Tests of Door Assemblies*
CAN/ULC S104 *Standard Method for Fire Tests of Door Assemblies*

Product: Fire-Resistant Door Hardware for use with Neutral & Positive Pressure Rated Category "A" and "B" Fire-Resistant Doors.

Markings: See [FD001 - Fire Door Labeling requirements](#)

Models:

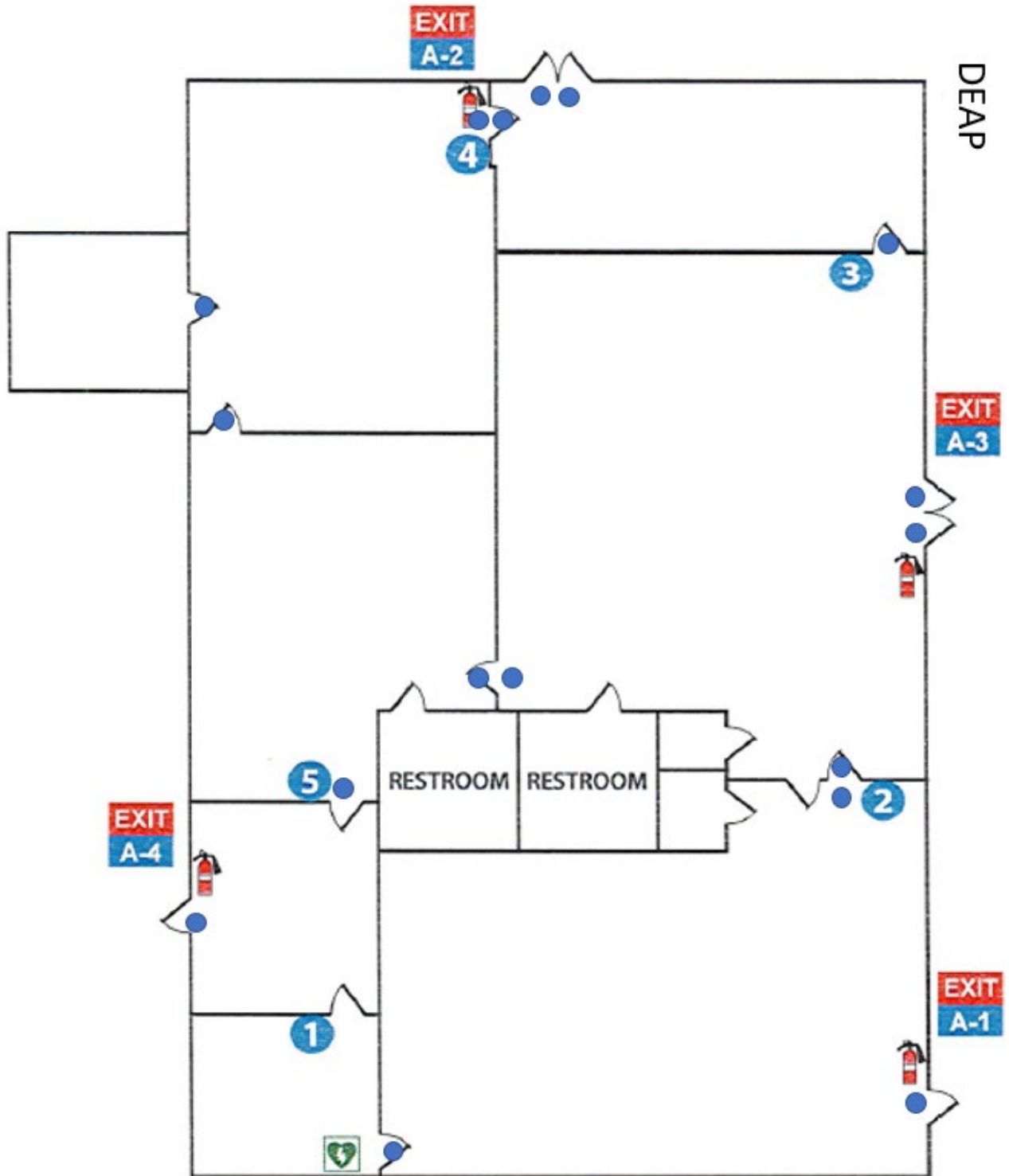
Product Name(s)	Door Skin Type	Door Core Type	Maximum Fire-resistance Rating
RhinoWare® Door Barricade Devices RW3000/RW4000	Wood	Solid Wood / Composite	20 Minute
RW3000-CL/RW4000-CL	Steel	Hollow / Steel Stiffened	90 Minute

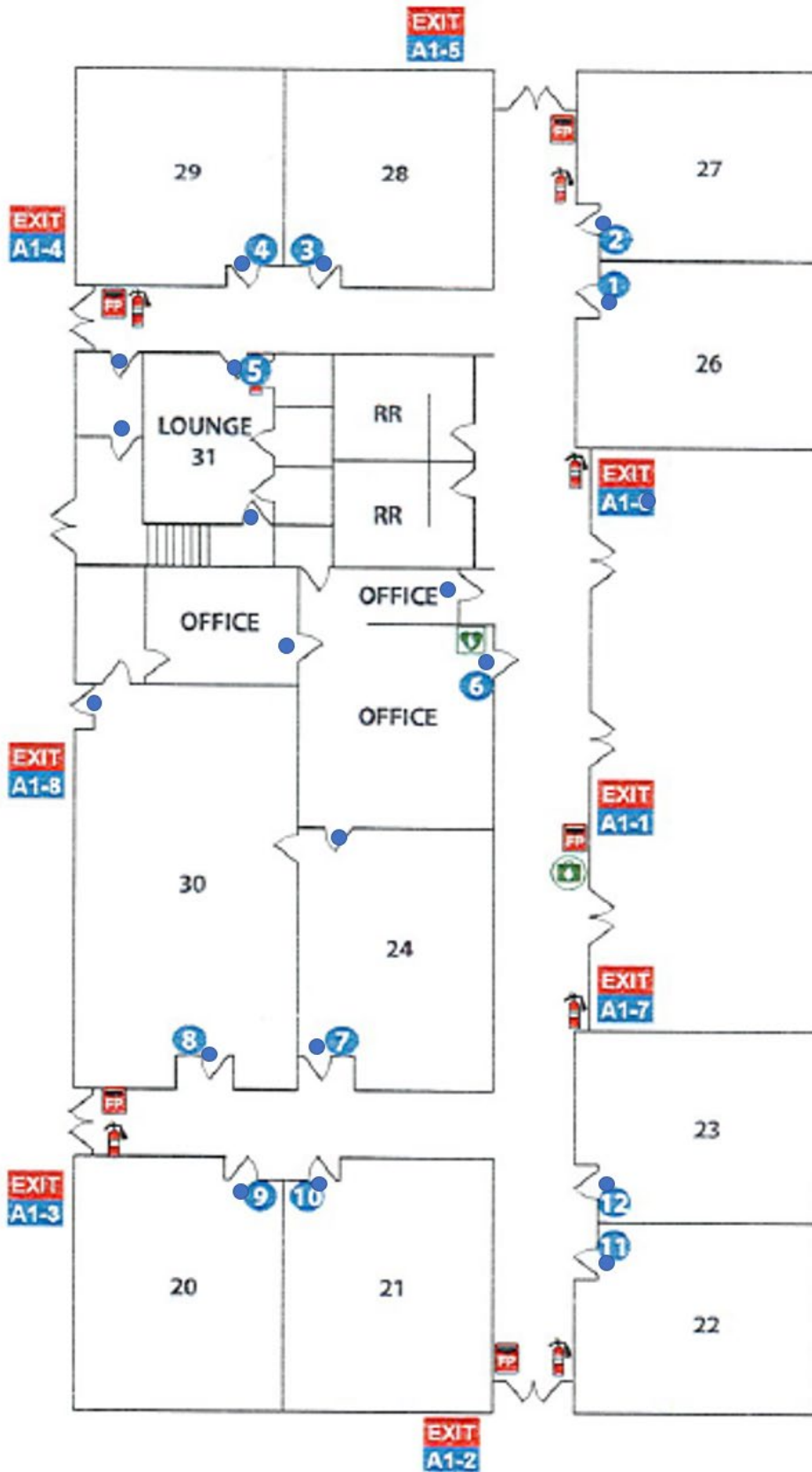
Notes: *The listing noted pertains to RhinoWare® Door Barricade Device intended for use with door products in fire-resistance rated applications. Where openings have additional criteria beyond the scope of fire-resistance rating, the Authority Having Jurisdiction (AHJ) should be consulted for approval of RhinoWare® Door Barricade Devices.*

Product is to be installed in accordance with the manufacturer's installation instructions strictly by installing personnel that is qualified by Campus Safety Products.

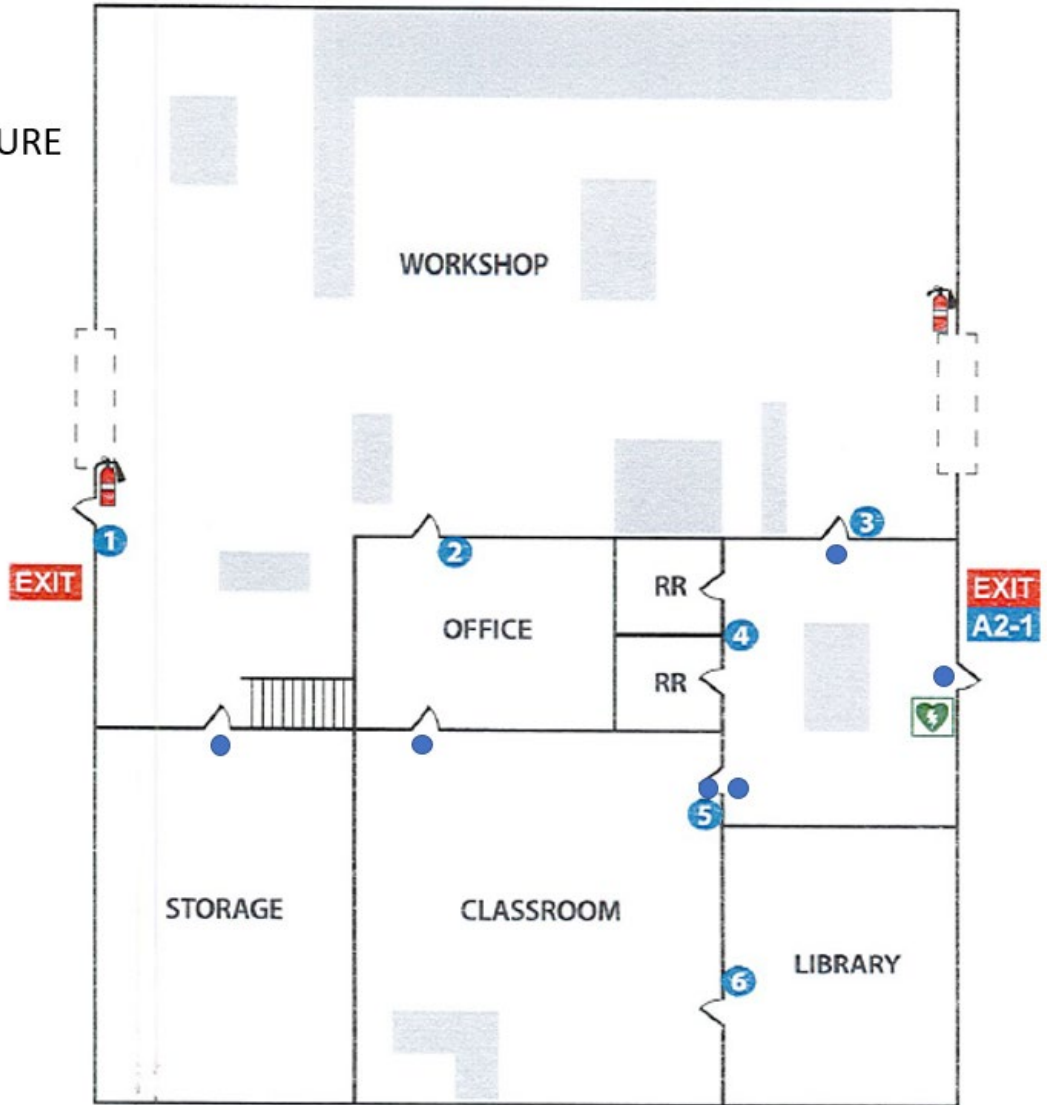
Refer to the [FD002 - Fire Door Guidelines](#) for general guidelines of fire door assemblies.

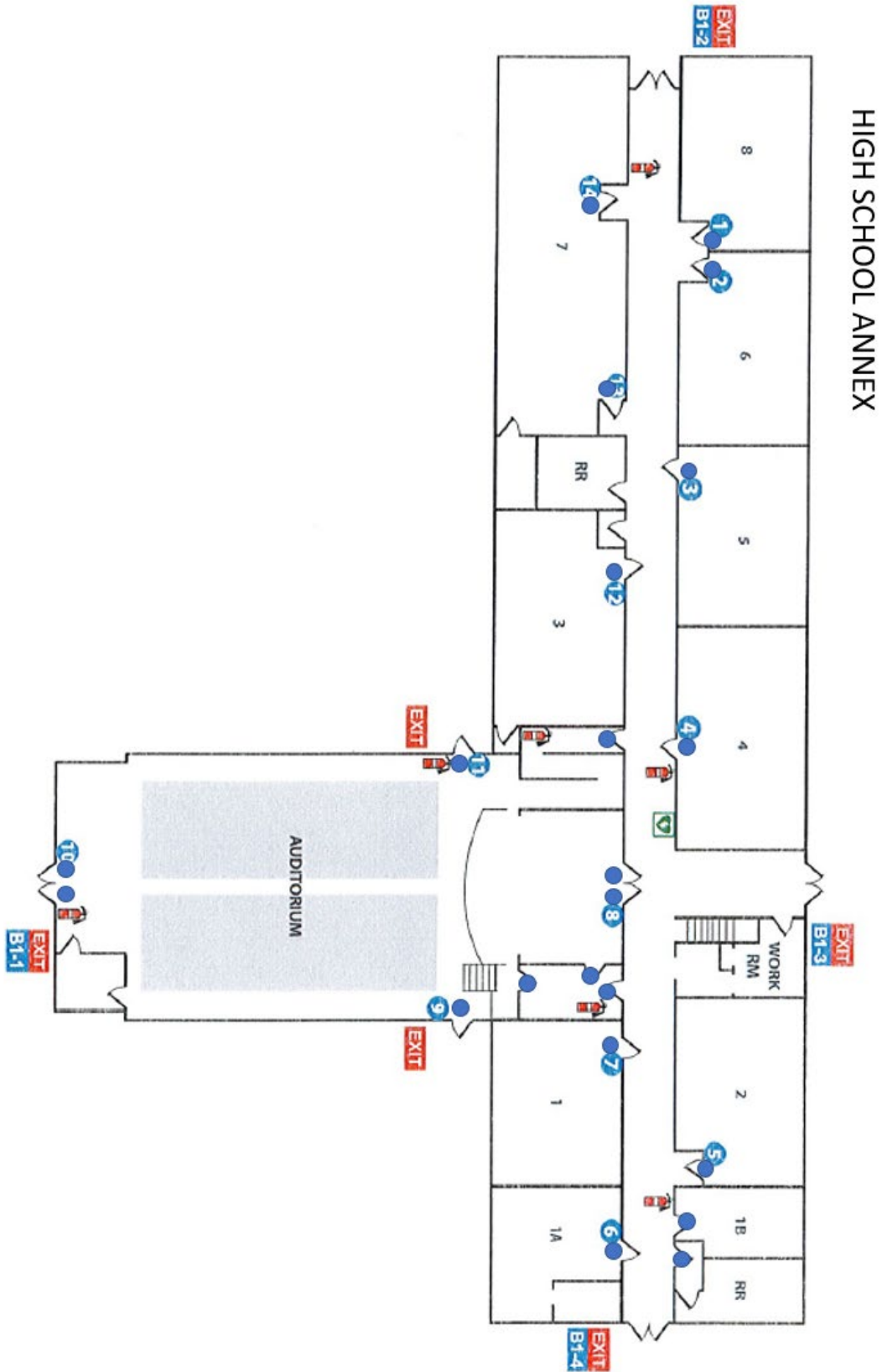
The materials, products or systems listed herein have been qualified to bear the QAI Listing Mark under the conditions stated with each Listing. Only those products bearing the QAI Listing Mark are considered to be listed by QAI. No warranty is expressed or implied, and no guarantee is provided that any jurisdictional authority will accept the Listing found herein. The appropriate authorities should be contacted regarding the acceptability of any given Listing. Visit the QAI Online Listing Directory located at www.qai.org for the most up to date version of this Listing and to validate that this QAI Listing is active. Questions regarding this listing may be directed to info@qai.org. Please include the listing number in the request.

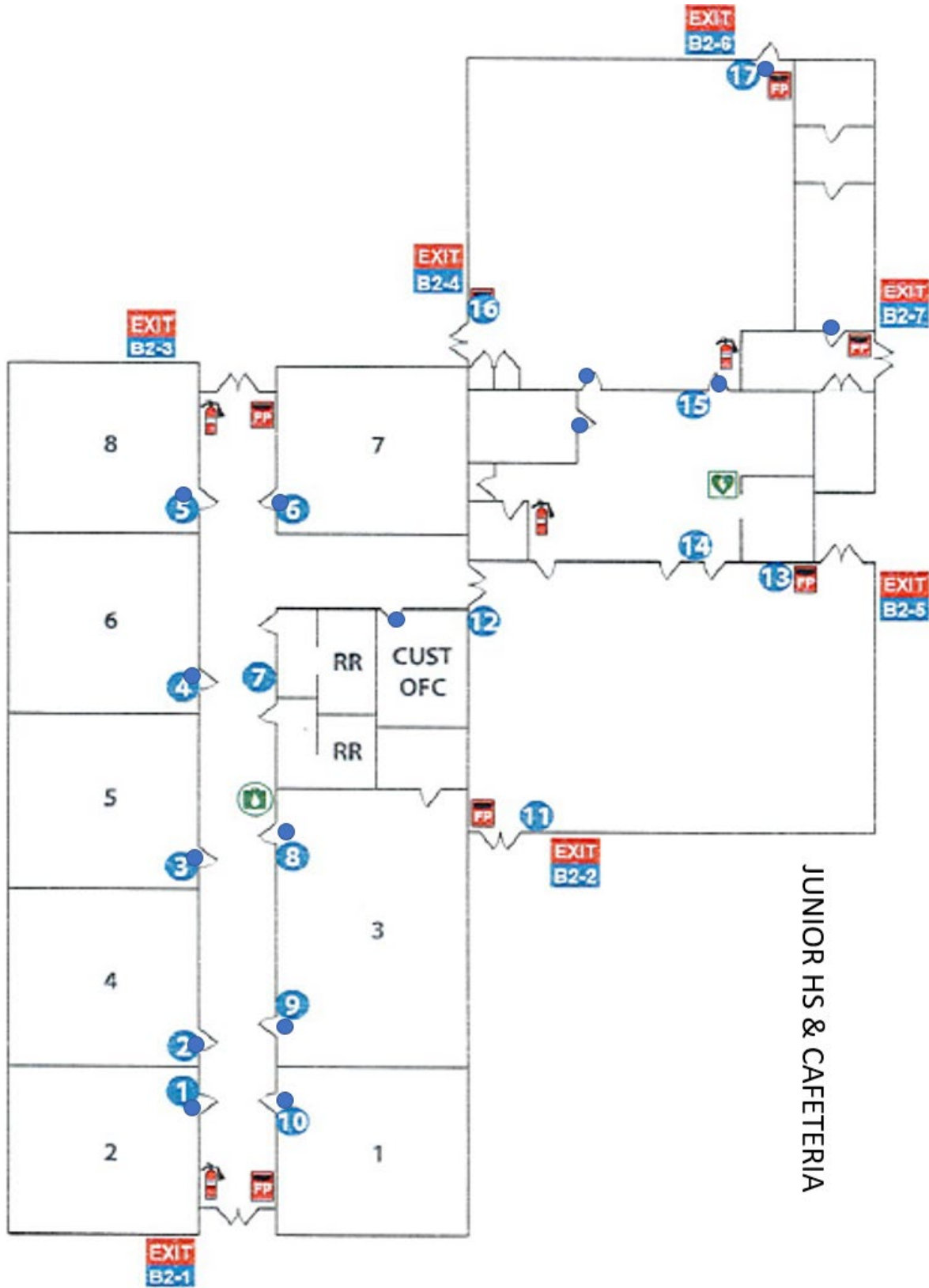




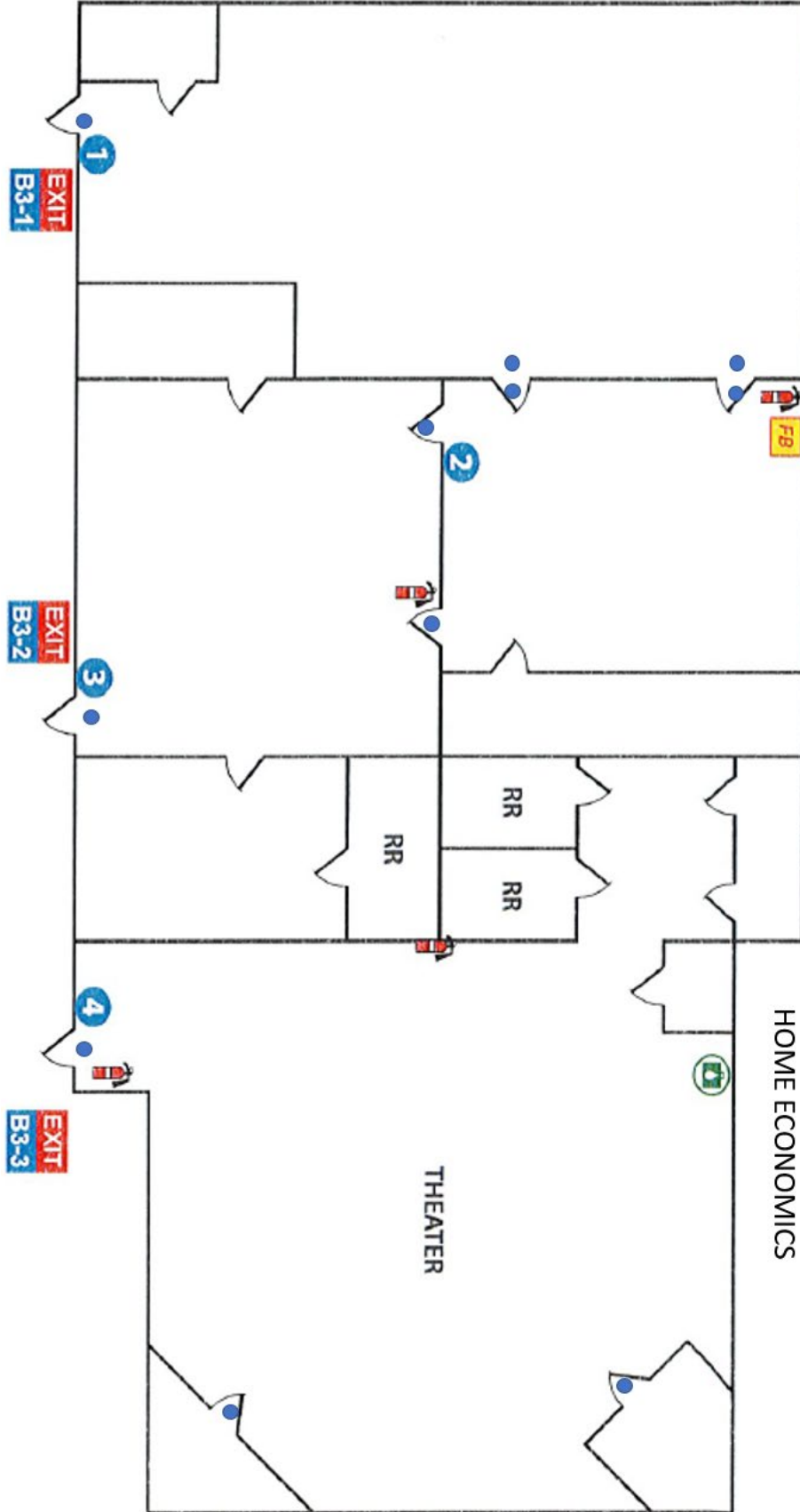
AGRICULTURE

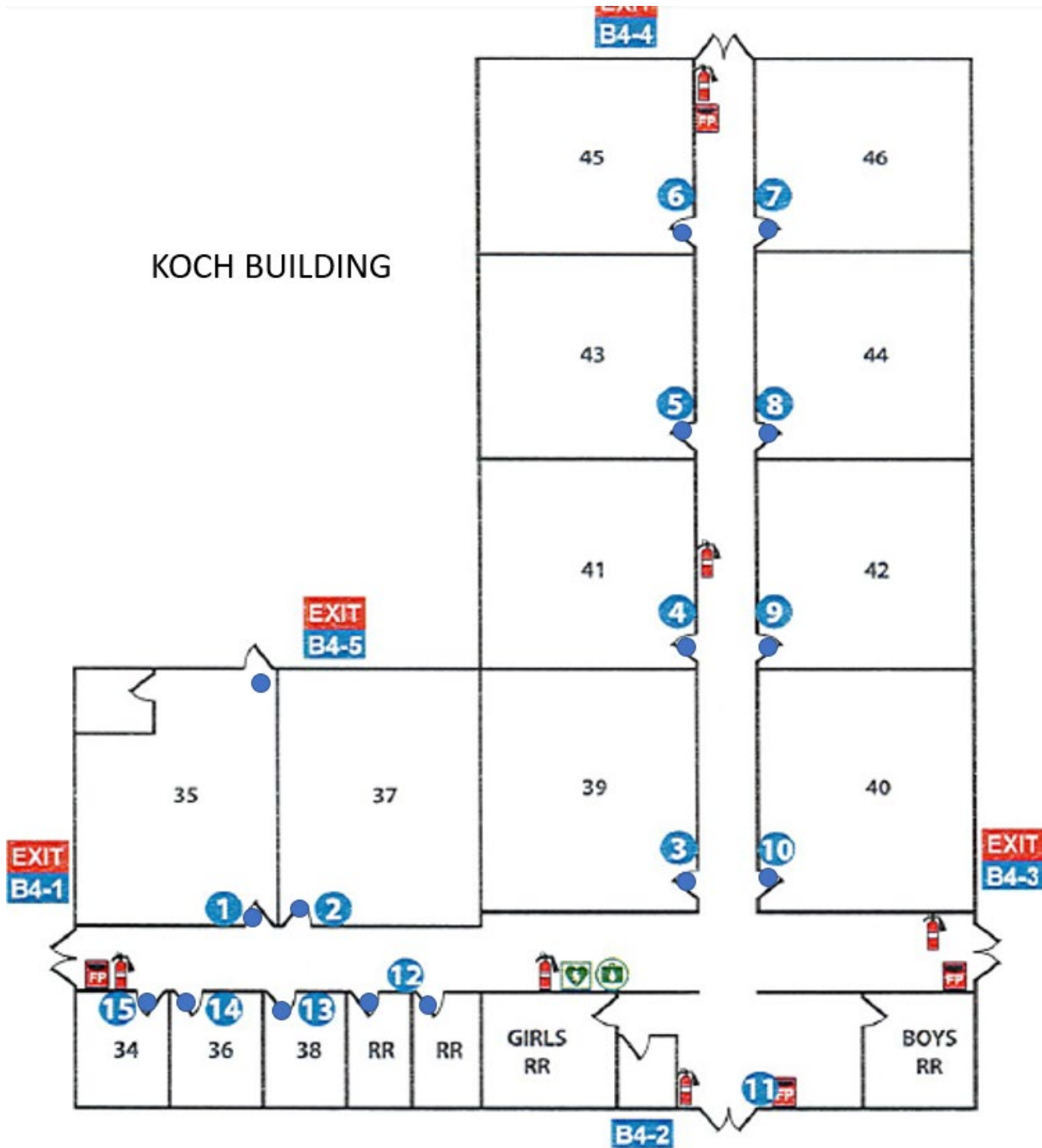


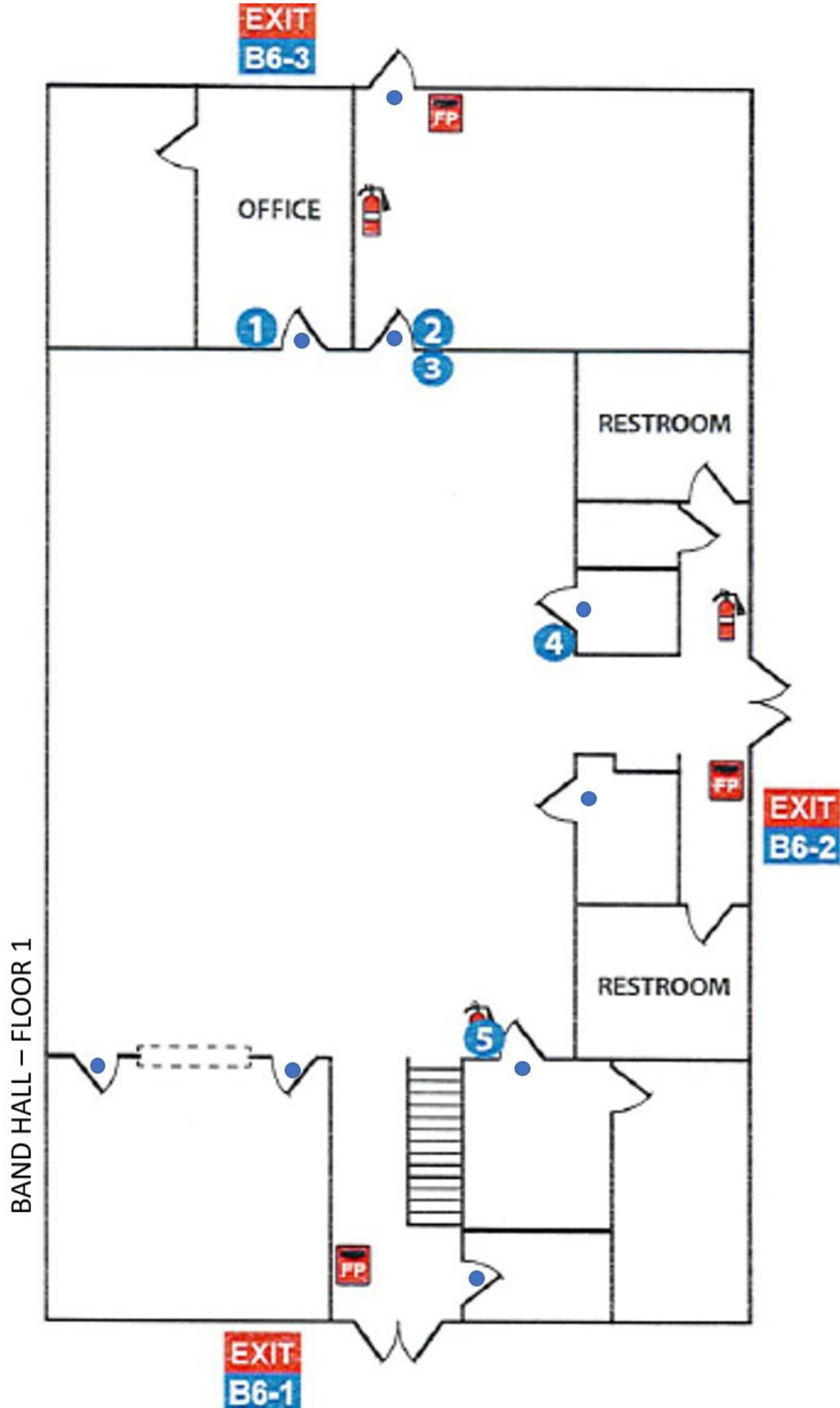


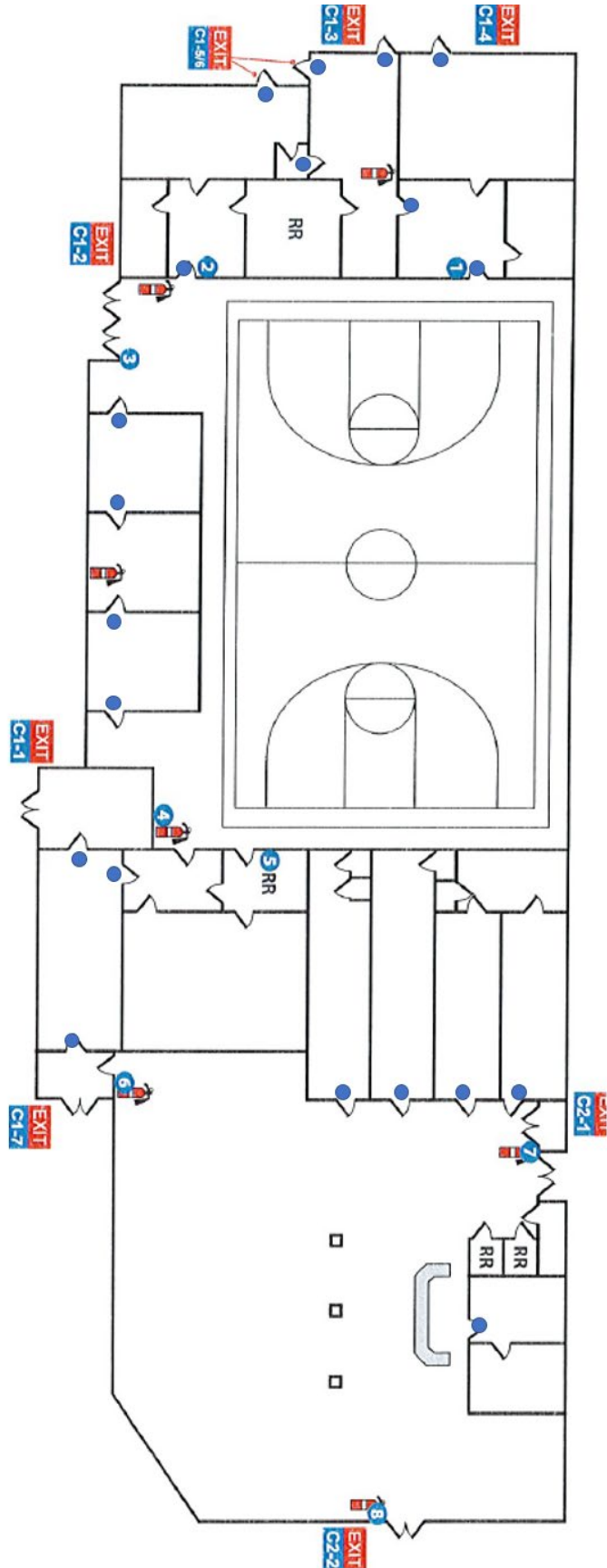


JUNIOR HS & CAFETERIA

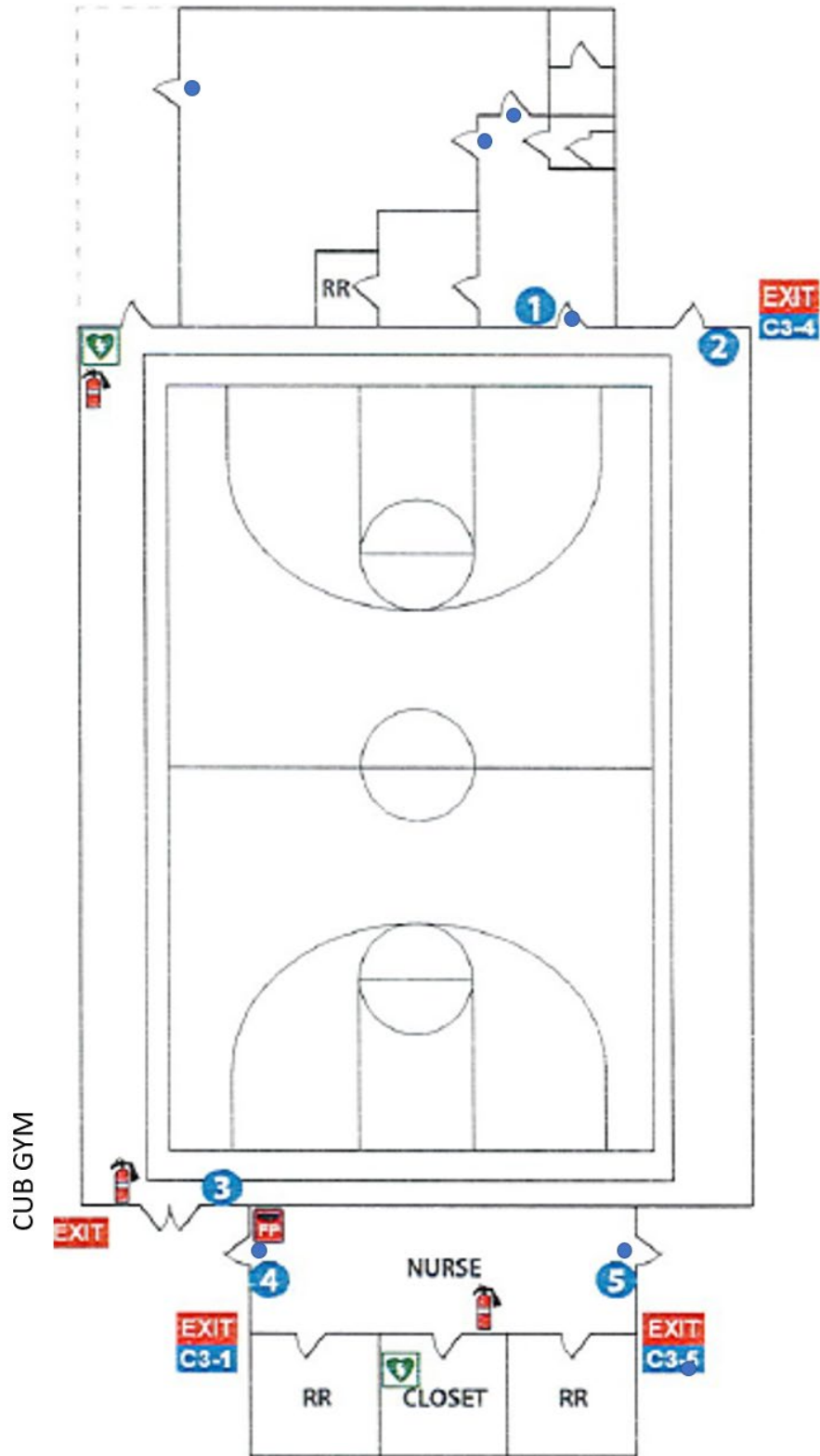


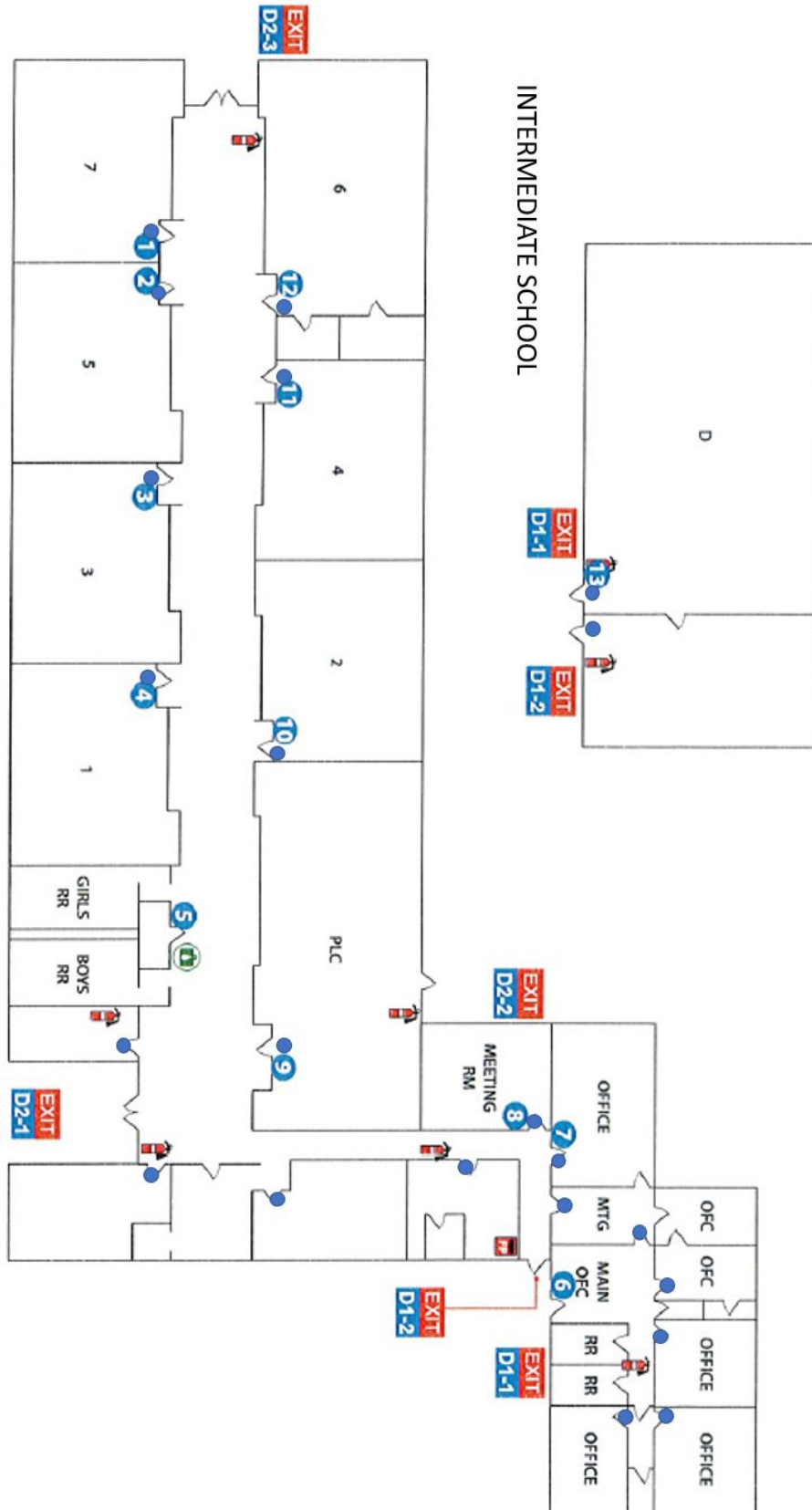


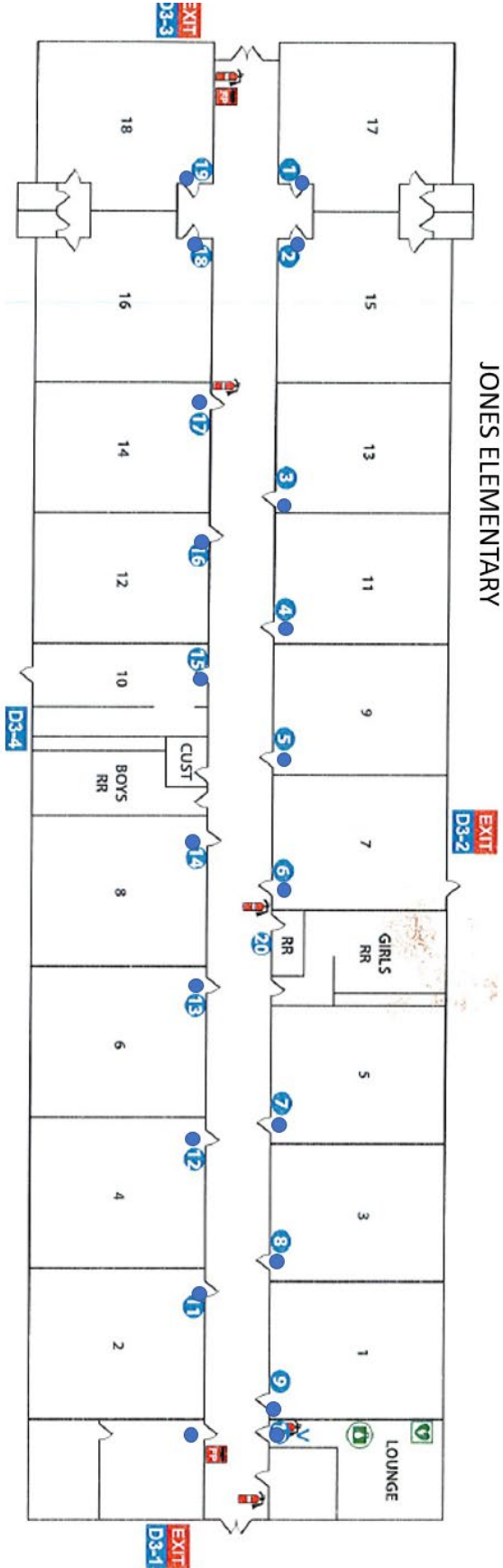


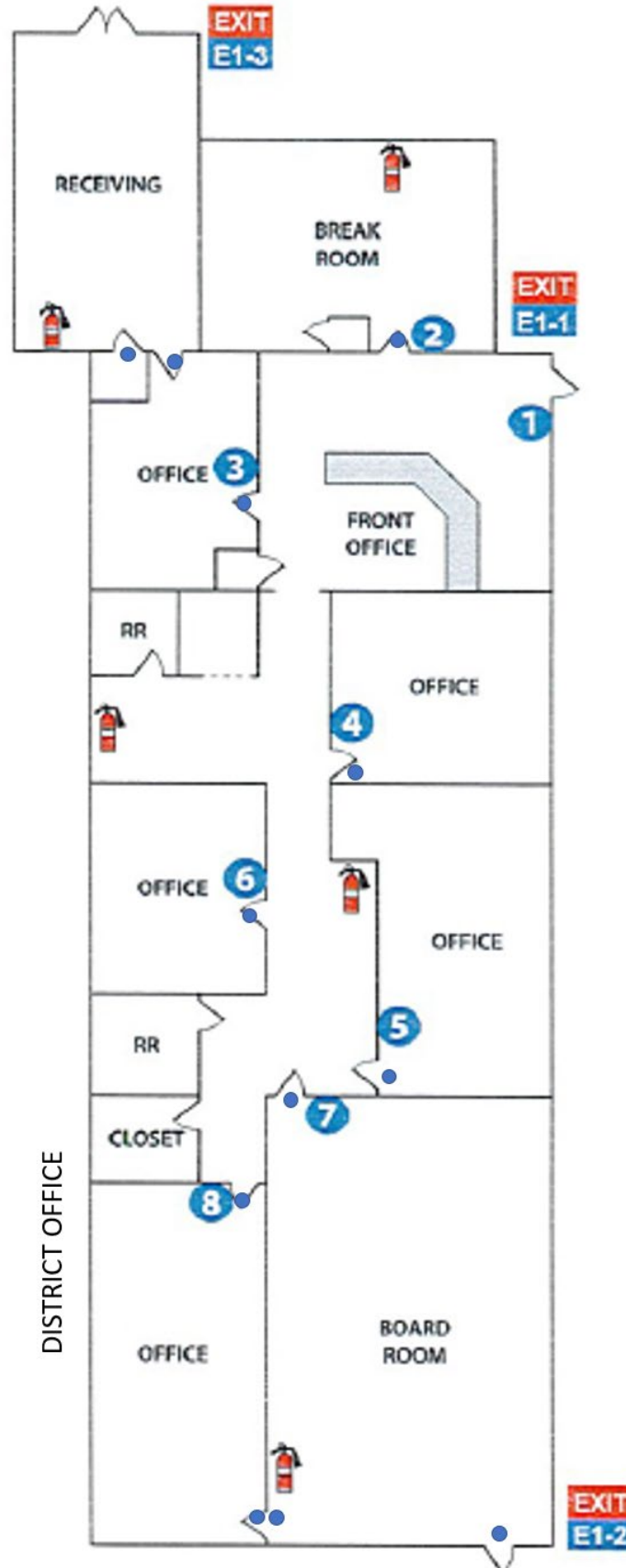


TIGER GYM & LIBRARY









LIMITED WARRANTY AND DISCLAIMER

I. WHAT THE LIMITED WARRANTY COVERS AND FOR HOW LONG

A. PRODUCT DEFINITION:

RhinoWare® Lockdown System (“Product”) consists of a steel locking assembly and mechanism and floor plate that, when properly installed, provides the ability to quickly secure any internal entry door. The Product meets all requirements for compliance with NFPA 80, NFPA 101, and Americans with Disabilities Act (“ADA”). This Limited Warranty applies only when all of these parts are genuine Campus Safety Products, LLC components. Other parts of any door or entryway system, including but not limited to doors, door slabs, doorjamb, mullions, door locks and hinges, are not covered by this Limited Warranty.

B. COVERAGE:

Subject to the limitations and exclusions below, and for the duration of the applicable stated Warranty Period, Campus Safety Products, LLC warrants that Products purchased from Campus Safety Products, LLC or an Authorized Dealer and installed by Campus Safety Products, LLC or a Manufacturer-Certified Installer in the United States and Canada are free from non-conformities in material and workmanship.

C. WARRANTY PERIOD:

Five (5) years from the date of purchase from Campus Safety Products, LLC or an authorized dealer. Not transferable.

D. WARRANTY HOLDER:

The purchaser of a Product for installation at premises the purchaser owns or rents.

2. WHAT THIS LIMITED WARRANTY DOES NOT COVER

A. GENERAL:

This Limited Warranty does not include non-conformities or damages attributable to or arising from:

- General wear and tear.
- Minor scratches or minor visual imperfections outside the Product’s standard manufacturing and quality specification parameters. This includes but is not limited to finish discoloration, tarnishing, scratches, abrasions and visual imperfections. Exposure to certain environmental conditions, including but not limited to, salt spray, acid rain, high humidity or other corrosive elements may adversely affect the coatings on finishes (as well as the mechanical and locking system mechanisms). Timely and proper cleaning of the Product will help to extend the finish appearance (and mechanical mechanisms) and discourage the possibility of rust and corrosion. The Product should be wiped down periodically with a soft, water-dampened cloth and dried off with a soft dry cloth. Abrasive cleaners or other harsh chemicals should never be used on the Product. Maintenance of the finish (and mechanical mechanisms) is the responsibility of the Warranty Holder.
- EXPRESS OR IMPLIED WARRANTIES, INCLUDING NO WARRANTIES OF MERCHANTABILITY OR FITNESS FOR A PARTICULAR PURPOSE, AND THE OTHER PROVISIONS OF SECTIONS 4 AND 5 OF THIS LIMITED WARRANTY APPLY.
- Improper installation, unless installation is performed by Campus Safety Products, LLC, a properly authorized agent of Campus Safety Products, LLC, or an end customer who is trained and certified in the installation of the Product by Campus Safety Products, LLC and who installs the Product in compliance with such training.
- Negligence; improper use; incorrect installation or finishing (with stain, paint or varnish, or in any manner); lack of maintenance; or operation inconsistent with Campus Safety Products, LLC recommendations and written instructions that are generally available in Campus Safety Products, LLC Product Information Materials as updated by bulletins or other written communications, or on the Campus Safety Products, LLC website at www.campussafetyproducts.com. PRODUCTS, PARTICULARLY THOSE INSTALLED WITHIN FIVE (5) MILES OF A BODY OF SALT WATER, REQUIRE PROMPT AND CAREFUL MAINTENANCE BY THE WARRANTY HOLDER, INCLUDING PERIODIC CLEANING.

- Improper pre-installation storage, including storage in humid locations.
- Misapplication of Products or faulty building design or construction, including inadequate or damaged components of a door or entryway system, other than Products or the failure of components of a door or entryway system, other than Products.
- Installation in locations or a manner that exceeds or deviates from Product design standards and/or testing and certified performance specifications, and/or not in compliance with building or fire codes. It is the Warranty Holder's (and its building agents) responsibility to consult local building code laws, and the certification and rating agencies published materials and websites for guidelines on the standards necessary to meet all regulations and codes in the area where the Product will be installed.
- Product reinstalled after removal from its original installation or removal of any component of the Product.
- Rotting, splitting, warping, swelling or other adverse condition, of or attributed to or arising from a door or entryway system. Campus Safety Products, LLC does NOT warrant the performance or integrity of any third party component of a door or entryway system, and therefore, this Limited Warranty will not apply to Product non-conformities or damages attributed to or arising from the rotting, splitting, warping, swelling or any other condition of a third party product.
- Damages aggravated or worsened because of failure by the Warranty Holder or its agents to timely take reasonable actions to mitigate any alleged damages or failure to file a claim for alleged damages promptly and during the Warranty Period.
- Harsh natural environmental conditions, including by example, from substantial exposure to sun, salt spray, or airborne pollutants; other severe conditions including exposure to harsh chemicals or solvents, such as acidic brick washes or stucco leach; or damage from vandalism, or domestic or wild animals.
- Labor for removing, installing or replacing Product or components or labor for other materials that are removed, reinstalled or refinished in conjunction with repairing or replacing the Product or component.
- Any painting, staining, scratching or other alteration of a Campus Safety Products, LLC factory-applied exterior coating surface of the Products.
- Fading, discoloration or color change of a Campus Safety Products, LLC factory-applied color coating.

B. ADDITIONAL LIMITATIONS, EXCLUSIONS AND CONSIDERATIONS:

- This Limited Warranty does not cover Products not installed in the USA or Canada. This Limited Warranty applies only to Products purchased and installed in the USA or Canada. For Products purchased or installed outside the USA or Canada, Campus Safety Products, LLC disclaims any and all warranties of any kind, express or implied, by operation of law or otherwise, and any and all liability for damages of any kind.
- This Limited Warranty does not cover Products installed on external entryway doors.
- This Limited Warranty does not cover Products installed on internal doors to rooms or areas of a building or structure which is approved for, or capable of, occupancy in excess of fifty (50) people.
- This Limited Warranty does not guarantee safety for persons or property, nor make a premises inaccessible to third-parties.
- This Limited Warranty does not cover damage attributable to or caused by acts of God that include, but are not limited to, stresses, high winds, floods, fire and other conditions.
- This Limited Warranty will be void if the Product rusts due to reasons other than non-conformities in material and workmanship, including without limitation, rusting arising from misuse, abrasions, environmental conditions, solvents, corrosives, salts, chemicals, excessive moisture or any other damage due to normal wear and tear that could have been addressed by routine, timely and proper initial finishing or periodic corrective maintenance.

3. THIS LIMITED WARRANTY'S EXCLUSIVE REMEDY

If the Product or any components fail to meet this Limited Warranty, Campus Safety Products, LLC's sole obligation is to either (as Campus Safety Products, LLC elects):

- Repair the component(s), or
- Provide replacement component(s) to the Warranty Holder or Campus Safety Products, LLC's designated dealer, or

- Refund the Warranty Holder's purchase price (the lesser of the original Product/component purchase price or the original catalog list price).

Repaired or replaced components are warranted only on the same terms and for the remainder of the Warranty Period. Campus Safety Products, LLC reserves the right to discontinue or change any Product. If the Product or component is not available, Campus Safety Products, LLC may select and provide a replacement Product or component of equal quality and price. This is the Warranty Holder's sole and exclusive remedy for the Product under this Limited Warranty. By example but not limitation, this Limited Warranty does not cover any of the following costs and expenses: (i) labor for removing, reinstalling, refinishing Product (or other materials that are removed, reinstalled or refinished to repair or replace the Product); (ii) shipping/freight expenses to return the Product to Campus Safety Products, LLC; (iii) normal maintenance; (iv) consequential, special or indirect losses or damages of any kind.

4. DISCLAIMER OF WARRANTIES

THIS LIMITED WARRANTY IS IN LIEU OF AND EXCLUDES ALL OTHER WARRANTIES NOT EXPRESSLY SET FORTH HEREIN, EXPRESS OR IMPLIED, BY OPERATION OF LAW OR OTHERWISE, INCLUDING BUT NOT LIMITED TO, ANY IMPLIED WARRANTIES OF MERCHANTABILITY OR FITNESS FOR A PARTICULAR PURPOSE. TO THE EXTENT THAT ANY IMPLIED WARRANTIES MAY NONETHELESS EXIST BY OPERATION OF LAW, SUCH WARRANTIES ARE LIMITED TO THE DURATION PROVIDED BY LAW. SOME STATES/PROVINCES/TERRITORIES DO NOT ALLOW LIMITATIONS ON HOW LONG AN IMPLIED WARRANTY LASTS, SO THE ABOVE LIMITATIONS MAY NOT APPLY. CAMPUS SAFETY PRODUCTS, LLC DOES NOT AUTHORIZE ANYONE TO CREATE FOR IT ANY OBLIGATION OR LIABILITY IN CONNECTION WITH PRODUCTS.

5. LIMITATION OF LIABILITY

CAMPUS SAFETY PRODUCTS, LLC'S SOLE LIABILITY UNDER THIS LIMITED WARRANTY IS REPLACEMENT, REPAIR OR REFUND OF THE PURCHASE PRICE AS SET FORTH ABOVE. IN NO EVENT WILL CAMPUS SAFETY PRODUCTS, LLC BE LIABLE FOR INCIDENTAL, CONSEQUENTIAL, INDIRECT, SPECIAL OR PUNITIVE DAMAGES, INCLUDING BUT NOT LIMITED TO, DAMAGE OF ANY KIND TO A PREMISES, LOSS OF PRODUCT USE, REINSTALLATION, LABOR, REMOVAL, REFINISHING, TEMPORARY/PERMANENT RELOCATION OF RESIDENTS OR PROPERTY, LOSS OF PROFITS/REVENUE, INTEREST, LOST GOODWILL, WORK STOPPAGE, IMPAIRMENT OF OTHER GOODS OR WORK, INCREASED OPERATING EXPENSES, EMOTIONAL DISTRESS CLAIMS OR CLAIMS OF THIRD PARTIES FOR SUCH DAMAGES, WHETHER BASED ON CONTRACT, WARRANTY, TORT (INCLUDING BUT NOT LIMITED TO, STRICT LIABILITY OR NEGLIGENCE OR OTHERWISE, EVEN IF ADVISED OF THE POSSIBILITY OF SUCH DAMAGES). SOME STATES/PROVINCES/TERRITORIES DO NOT ALLOW THE EXCLUSION OR LIMITATION OF INCIDENTAL OR CONSEQUENTIAL DAMAGES, SO THE ABOVE LIMITATION OR EXCLUSION MAY NOT APPLY. THIS LIMITED WARRANTY PROVIDES SPECIFIC LEGAL RIGHTS, BUT THE WARRANTY HOLDER MAY HAVE OTHER RIGHTS WHICH VARY BY LOCATION. IF THIS LIMITED WARRANTY IS DEEMED TO HAVE FAILED OF ITS ESSENTIAL PURPOSE, IN NO EVENT WILL CAMPUS SAFETY PRODUCTS, LLC'S ENTIRE LIABILITY EXCEED THE LESSER OF THE PRODUCT'S OR THE NON-CONFORMING COMPONENT'S PURCHASE PRICE.

6. CLAIMS

Claims must be initiated during the Warranty Period. To initiate a claim, please contact the builder, dealer or contractor who installed or sold the Product. If that party is unknown or unreachable, contact Campus Safety Products, LLC, 103 Sussex Ct., Jacksonville, North Carolina 28540, at +1 (919) 741-4478 or at www.campussafetyproducts.com. Claimant will be required to provide proof of premise ownership and the date of Product purchase and may be required to return the Product or component to Campus Safety Products, LLC (at Claimant's expense).