

Technology Update

May 2026





OVERVIEW

Items to present:

- 1:1 device status
- Tech team and work summary
- E-Rate updates
- Multi-layered security strategy
- Bond projects update
- Summer projects



1:1 Device Status



9,573

Total 10th gen iPads deployed



2nd Year of 4

Refresh planned for 2028

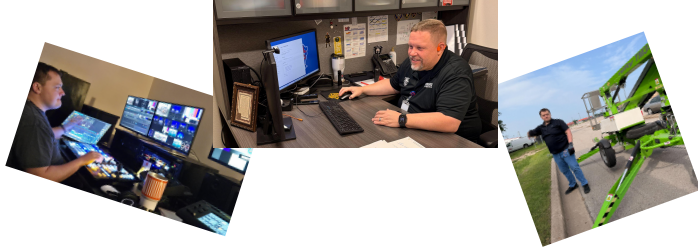


1.99% Breakage Rate

191 repairs this year. Significantly below our historical 3-5% average



Midway ISD Technology Team



Tech Rotations

Campus	Technician
High School	Marissa/Irwing
Castleman Creek	
Park Hill	
Spring Valley	
DAEP	
Woodway	Harry/Amanda
Chapel Park	
Hewitt	
Middle School	
Maintenance	
Speegleville	Ryan/Cameron
River Valley	
South Bosque	
Administration	
Horizons	

Strategy for campus coverage

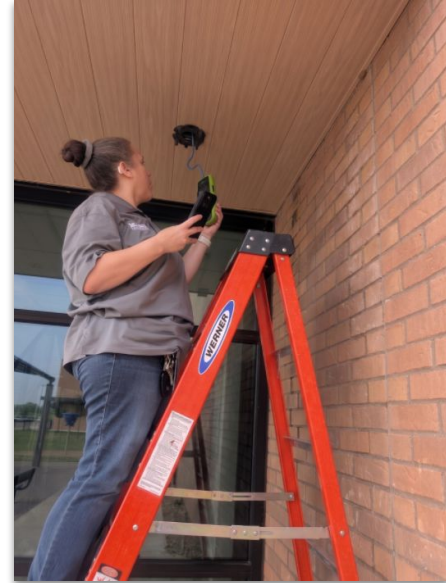
- Campuses divided into 3 groupings
- Teams of two techs assigned to each group
- Each 6 weeks we switch partners and campus assignments

Benefits

- Ownership of tickets
- Relationships strengthen between techs
- Tech knowledge of every campus
- Campus knowledge of all technicians

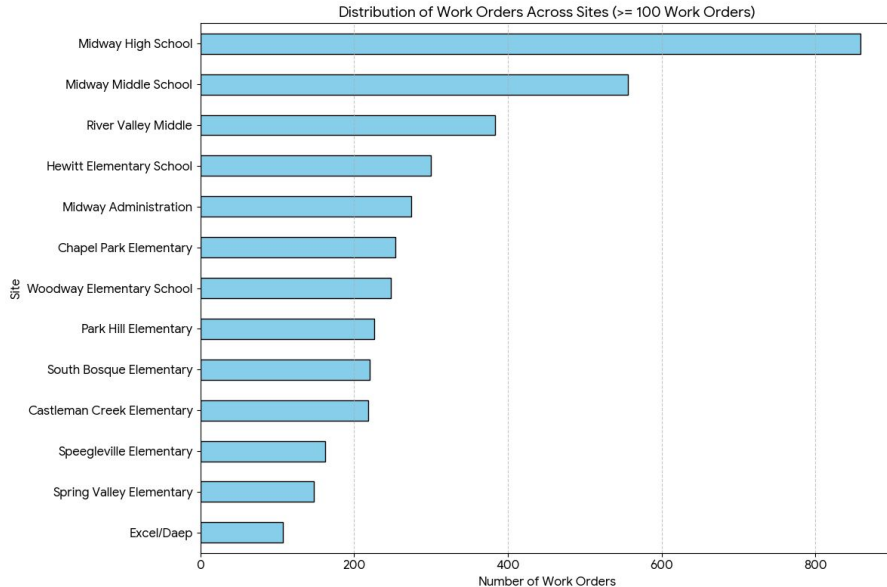
Help Desk Coverage (x4357)

- Internal help line is provided during school hours
- Field techs rotate through phone coverage



Technology Work Orders

(by Campus)



Total of 4,062 completed work orders

- Report range Aug 1 - May 8
- 7% increase from last year (3,782)
- August peak - 960 work orders, 3x avg month

Distribution

- Aligns with student density

Top Categories

- Apple Devices - 647
- Computer Hardware - 576
- Printers - 525
- Audio/Visual - 322

E-RATE Funding



Eligibility and discount

- Eligible items include internet access, connectivity between campuses, wired and wireless network components, battery backup units (UPS)
- Discount is based on percent students eligible for NSLP (free or reduced lunch)

INCOME Measured by % of students eligible for the National School Lunch Program (NSLP)	Urban Discount	Rural Discount
Less than 1%	20%	25%
1% to 19%	40%	50%
20% to 34%	50%	60%
35% to 49%	60%	70%
50% to 74%	80%	80%
75% to 100%	90% for Category One (C1) and 85% for Category Two (C2)	

E-Rate Funding Year 2026



E-Rate Category 1 (approved)

- Internet circuits, dark fiber for campus connectivity, and maintenance coverage for private fibers
- Upgrading Internet circuit from 10Gb to 20Gb - while saving \$475/month!

E-Rate Category 2 (yet to be approved)

- Wireless network controllers
- Campus UPS units

The Security “Onion”

Multi-Layered Security Strategy for protecting staff and students

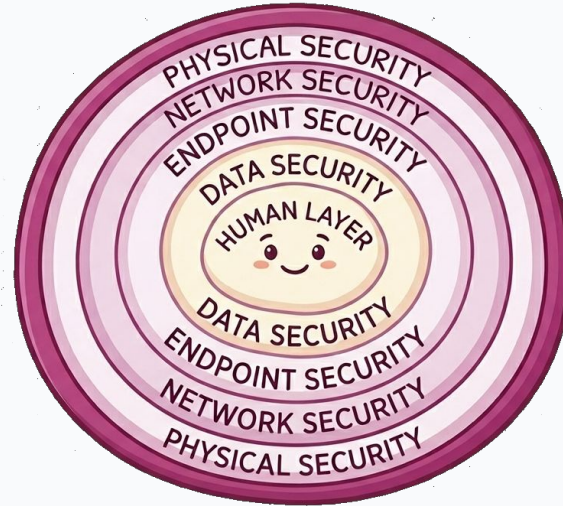
Layer 1 - Physical Security

Layer 2 - Network Security

Layer 3 - Endpoint Security

Layer 4 - Data Security and Integrity

Layer 5 - The Human Layer



Layer 1: Physical Security



Automated Access Control

Campus door access based strictly on employment location and active/inactive status



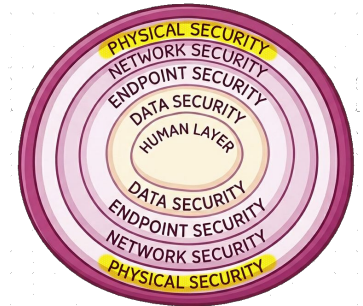
Surveillance System

Surveillance cameras record activity based on motion 24/7



Raptor Visitor Management

Visitors screened in real-time before allowed past secure campus vestibule



Layer 2: Network Security



Enterprise Firewall

Unauthorized network traffic blocked at the entry point



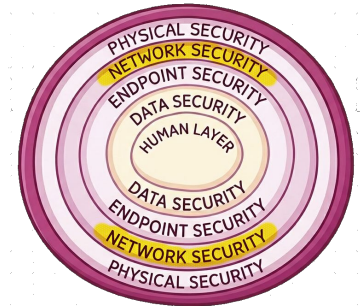
Content Filtering

Inappropriate web content blocked both on-campus and at home



Guest Isolation

Guest Wi-Fi traffic is strictly siloed, preventing access to internal school resources or data



Layer 3: Endpoint Security



Managed EDR

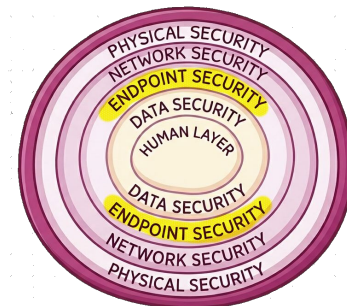
Proactive Managed Endpoint Detection & Response (Antivirus 2.0)



Email Filtering

Advanced screening for phishing, malware, and spam

Incoming Mail Summary		
Message Category	%	Messages
Stopped by IP Reputation Filtering	71.5%	14,707,577
Stopped by Domain Reputation Filtering	0.0%	2,862
Stopped as Invalid Recipients	0.0%	756
Spam Detected	1.0%	210,033
Virus Detected	0.0%	3
Detected by Advanced Malware Protection	0.0%	11
Messages with Malicious URLs	0.0%	1,426
Stopped by Content Filter	1.0%	207,373
Stopped by DMARC	1.0%	196,319
S/MIME Verification/Decryption Failed	0.0%	0
Total Threat Messages:	73.5%	15,130,041
Marketing Messages	4.2%	874,171
Social Networking Messages	0.7%	135,052
Bulk Messages	6.2%	1,265,592
Total Graymails:	11.1%	2,274,815
S/MIME Verification/Decryption Successful	0.0%	0
Clean Messages	15.4%	3,172,411
Total Attempted Messages:		20,577,267



Layer 4: Data Security



DPA Compliance

All third-party platforms are vetted for compliance

Our data privacy agreement is obtained prior to any sharing of data



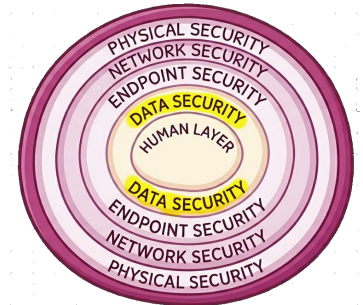
Immutable Backups

Local and offsite backups that cannot be altered by ransomware



Least Privilege

Access to resources is limited to minimum requirements to fulfill duties



Layer 5: The Human Layer



Annual Cyber Training

Mandatory security awareness training for all staff members to recognize evolving threats



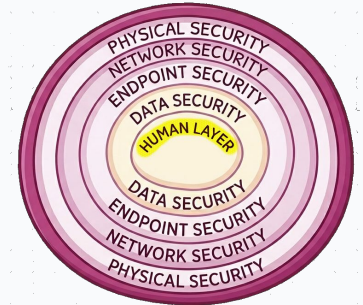
Phish-Test Campaigns

Simulated phishing attacks used as “teachable moments” to improve staff vigilance



Multi-Factor Authentication

Mandatory MFA for all staff accounts to prevent unauthorized access



Proactive Student Safety



Bark Human Monitoring

AI-Powered monitoring of student email and Google Drive. Alerts for self-harm, bullying, and violence with a human review team for critical alerts.



Classroom Device Management

Teachers can view student screens during lessons, focus on one app, and lock devices to ensure instructional focus.



ScreenTime Restrictions

Parents may set additional app and usage restrictions with ScreenTime. Instructions online at <https://www.midwayisd.org/programs-services/information-technology-services>



Update on Bond Expenditures

Bond Expenditures					
Date	PO	Vendor	Descr.	Amt	Budget
1/9/2026	26004959	Red River Technology	Data Center equip.	\$1,065,326.90	
3/30/2026	26007172	Dell	AIO Computers	\$159,595.20	
3/31/2026	26007328	Vertiv	DC batteries	\$19,680.19	
4/2/2026	26007413	B & H	Ocean Matrix	\$3,956.80	
4/14/2026	26007726	SHI	Aver doc cams	\$19,258.80	
4/15/2026	26007736	B & H	LG 75" panels	\$6,199.90	
4/22/2026	26007935	B & H	HP printers (pod)	\$18,609.75	

- Funding classroom computers and networking equipment through bond funds allowed us to reduce our 2026-2027 budget request by over \$600K!
- All mission-critical server infrastructure will be migrated new hardware prior to EOL date of 5/22



2026 Summer Projects

Teacher computer and AV refresh

- Year 5 of 5 - Woodway, Spring Valley, and Chapel Park
- Replacing ~160 VDI workstations with Dell PCs
- Updating AV cabling from VGA to HDBaseT (HDMI)
- New document cameras



Internet upgrade

- 10Gb to 20Gb - July 1st

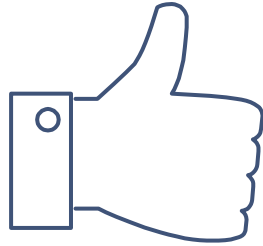
LightSpeed Parent Portal

- Automate account creation for parents/guardians
- Test/Deploy/Generate communication for families



Access Control Remediation

- Continue work to add/repair door position/request-to-exit sensors
- Allows for alerts on doors that have been held or forced



Thank you!
Questions?