

# ENROLLMENT PROJECTION

Independent School District 877  
Buffalo-Hanover-Montrose

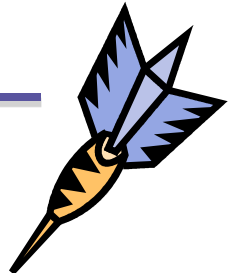
Tina Burkholder, Controller  
November 22, 2010



# Enrollment Projection Report

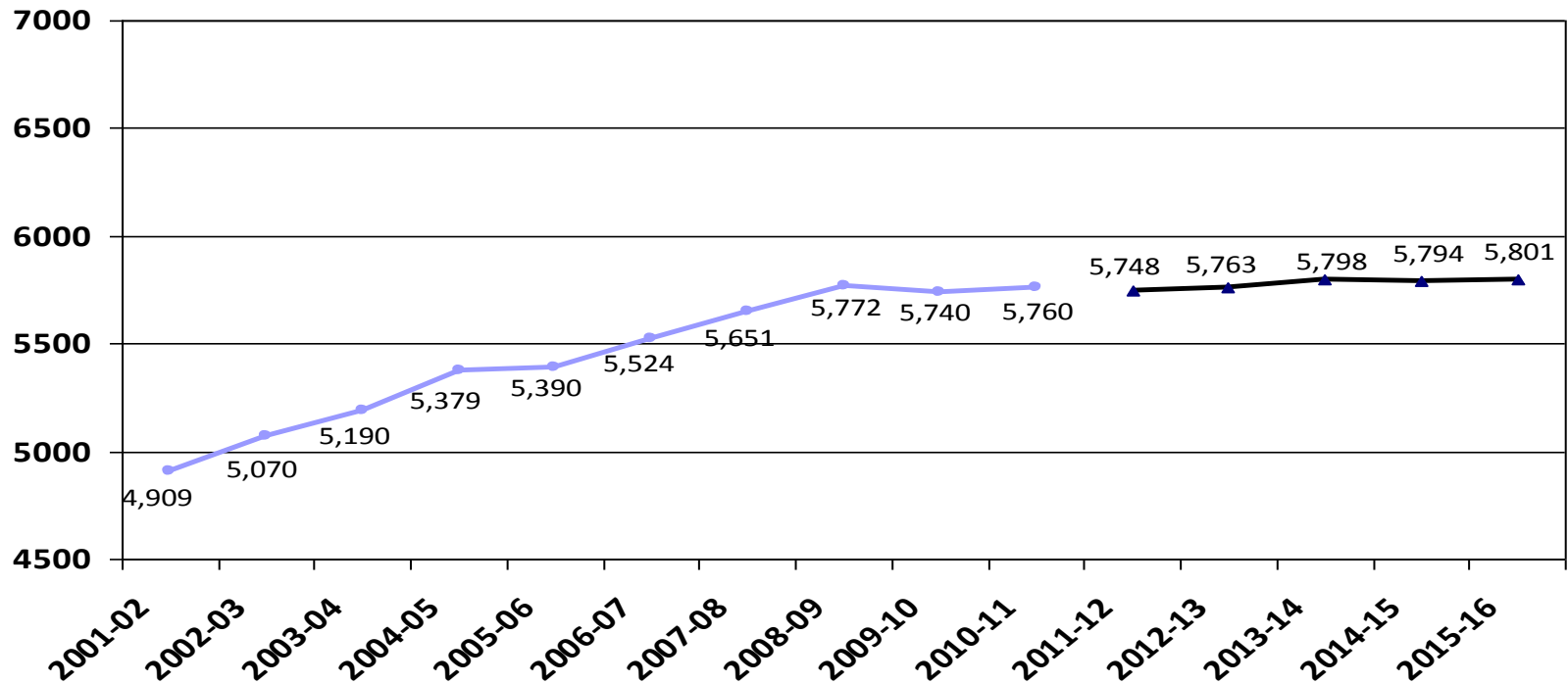
---

- Review of K-12 enrollment as of Oct. 1<sup>st</sup>
- Resident enrollment history
- Open enrollment & tuition history
- Nonpublic enrollment
- Fall vs. spring enrollment
- Review 2010-11 enrollment projection
- 2011-12 enrollment projection





# Historical and 2011-12 Projected K-12 Enrollment as of Oct. 1<sup>st</sup>





# Review of K-12 Enrollment as of Oct. 1<sup>st</sup>

---

- The school district growth trend came to a halt in the 2009-10 school year and basically recovered some of what we lost the year before for 2010-11.
- The five-year growth average is decreasing and currently at 74 students/year or 1.32%.
- Total enrollment growth for the past five years is 370 students or 4.27%.

	<b>2006-07</b>	<b>2007-08</b>	<b>2008-09</b>	<b>2009-10</b>	<b>2010-11</b>
<b>K-12 enrollment</b>	5,524	5,651	5,772	5,740	5,760
<b>Change over prior year</b>	134	127	121	-32	20
<b>% change</b>	2.49%	2.30%	2.14%	-0.55%	0.35%



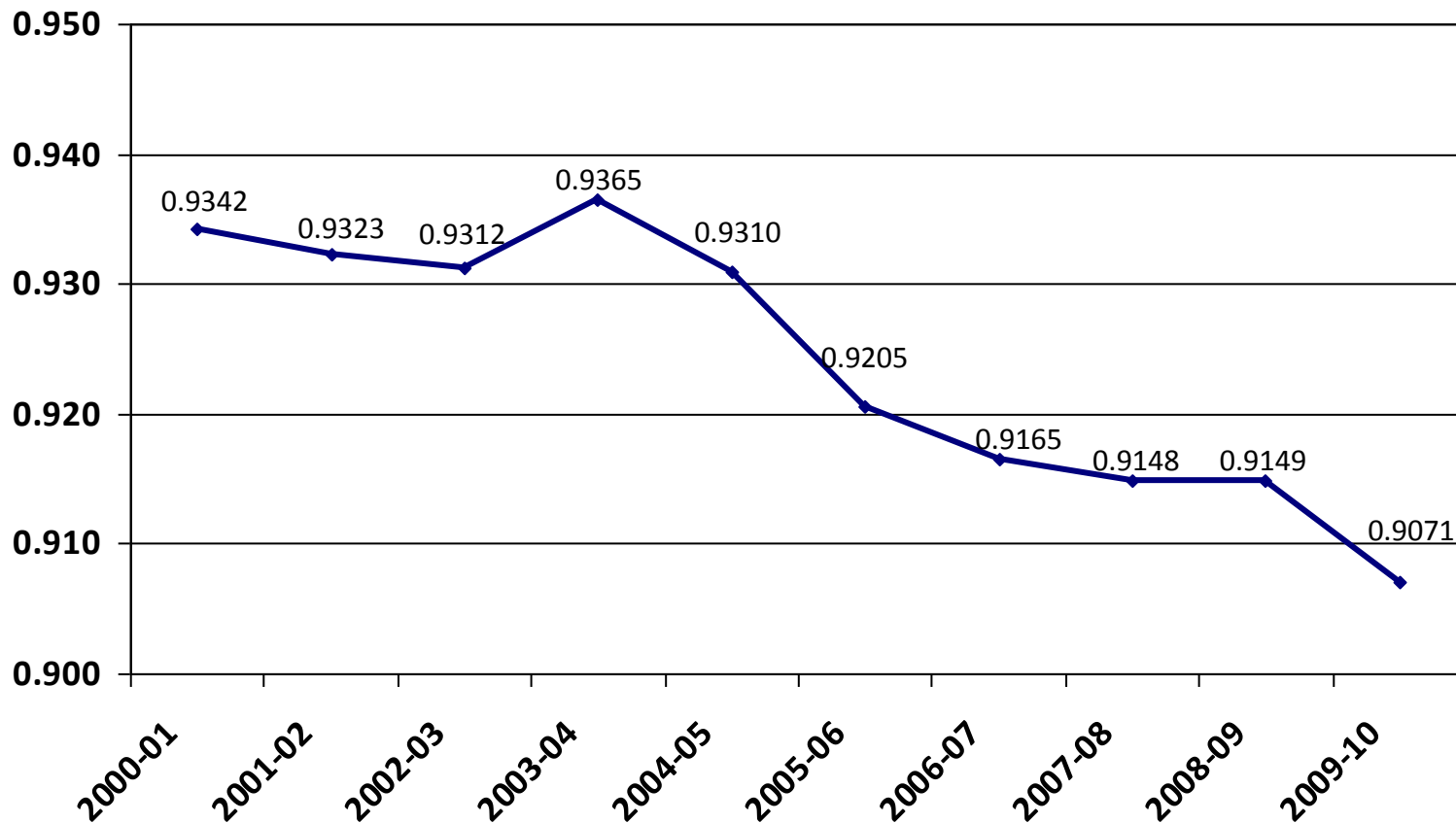
# Total Resident Students Enrolled in ISD 877 as of June 30<sup>th</sup>

---

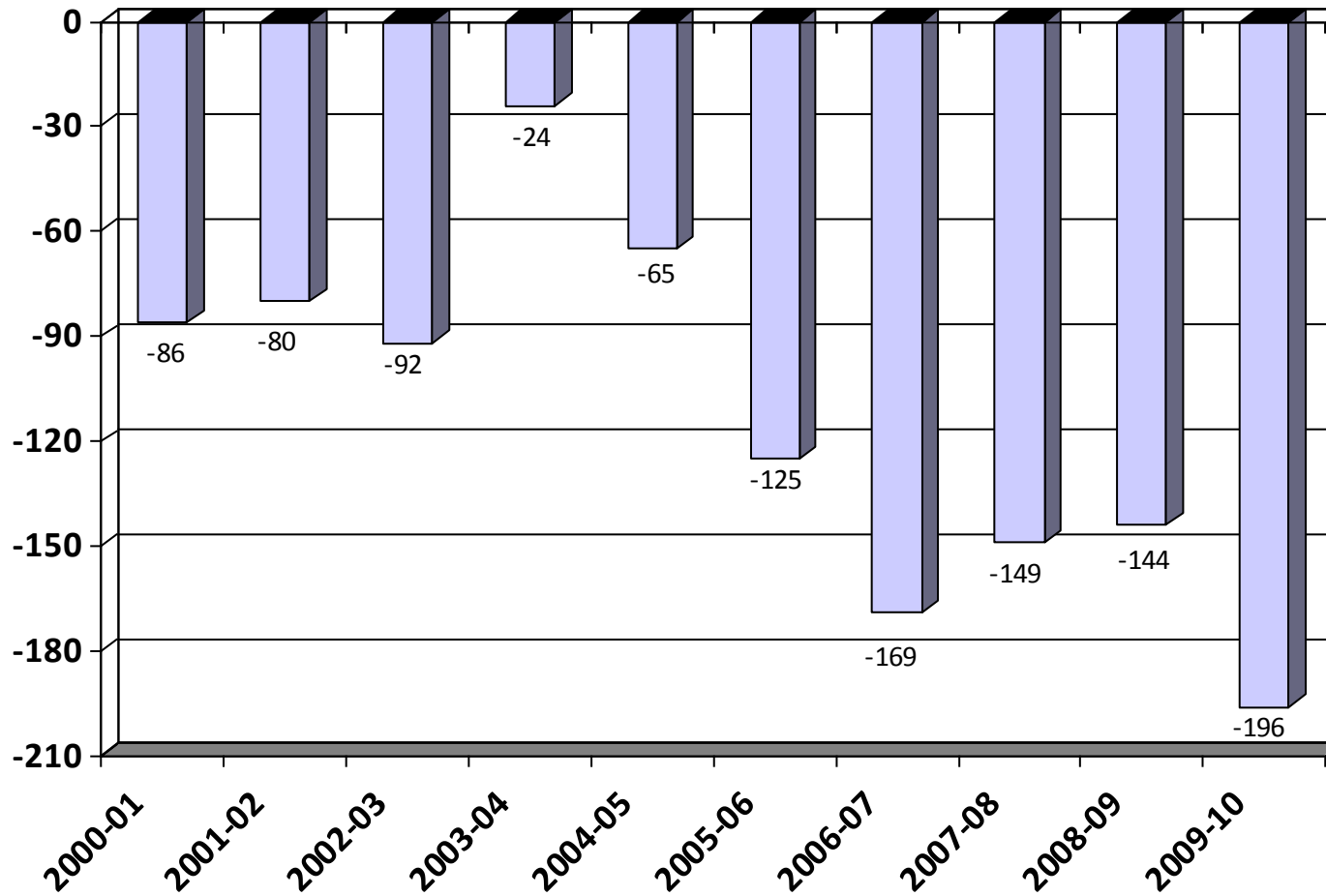
- BHM's resident population displays similar trends as the school district's enrollment

	<b>2005-06</b>	<b>2006-07</b>	<b>2007-08</b>	<b>2008-09</b>	<b>2009-10</b>
<b>Residents served</b>	5,073	5,239	5,301	5,396	5,369
<b>Residents going elsewhere</b>	438	478	494	501	550
<b>Total Residents</b>	5,511	5,717	5,795	5,897	5,919
<b>Change over pr yr</b>	76	206	78	102	22
<b>% change</b>	1.4%	3.7%	1.4%	1.8%	0.4%

# Total Resident Students Enrolled in ISD 877 as of June 30<sup>th</sup>



# Open Enrollment & Tuition Net Gain/Loss as of June 30<sup>th</sup>





# 2009-10 Open Enrollment & Tuition Gain/Loss by District as of June 30<sup>th</sup>

District	In	Out	Net
Delano	10	-92	-82
Rockford	37	-94	-57
Watertown-Mayer	2	-29	-27
Wayzata	0	-18	-18
Elk River	19	-31	-12
Orono	0	-6	-6
Osseo	25	-23	2
Anoka-Hennepin	12	-4	8
Howard Lake-Waverly-Winsted	38	-17	11
Annandale	16	-1	15
Maple Lake	62	-39	23
Monticello	39	-12	27
St. Michael-Albertville	119	-36	83

## Other Tuition

WTC -30

MAWSECO -9

Mn Transitions -11

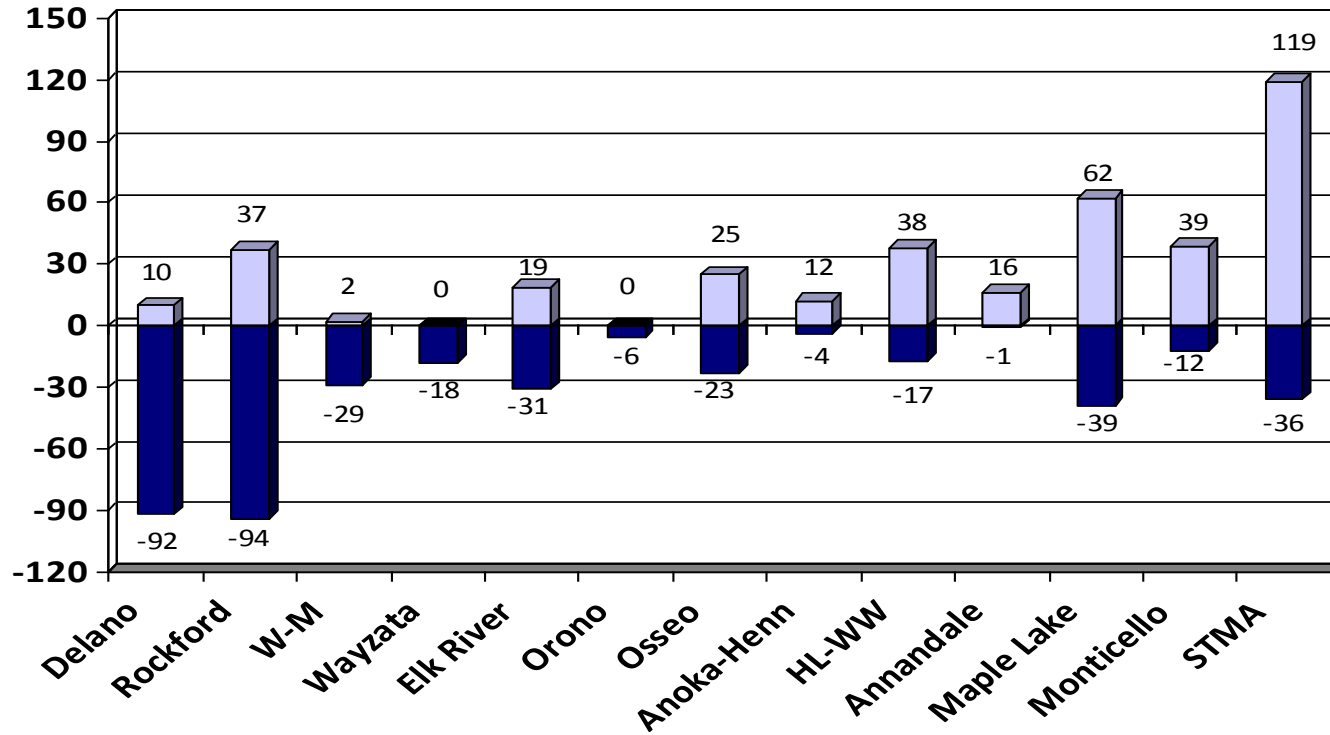
Swan River Charter -14

Houston (online) -19

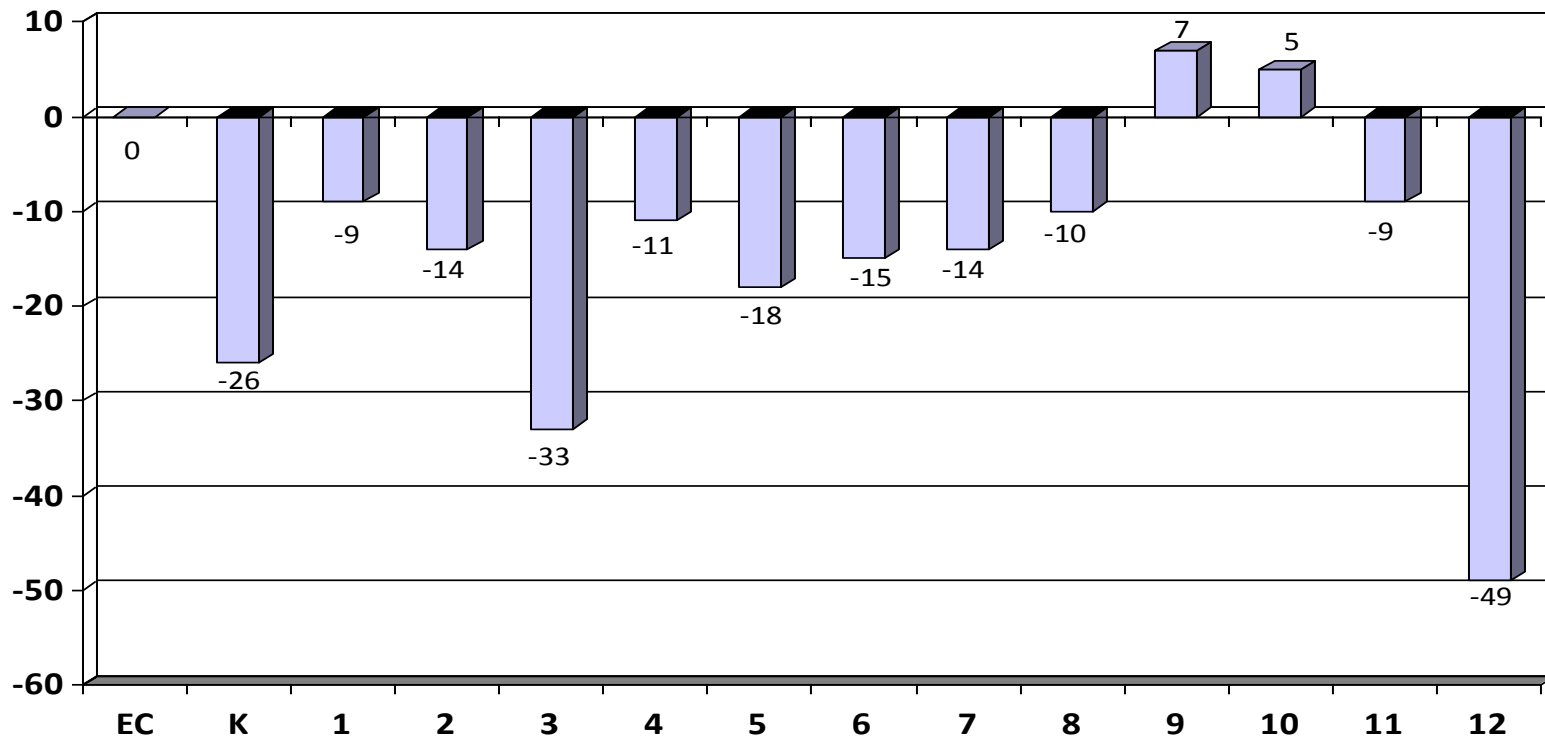




# 2009-10 Open Enrollment & Tuition Gain/Loss by District as of June 30<sup>th</sup>



# 2009-10 Open Enrollment & Tuition by Grade as of June 30<sup>th</sup>



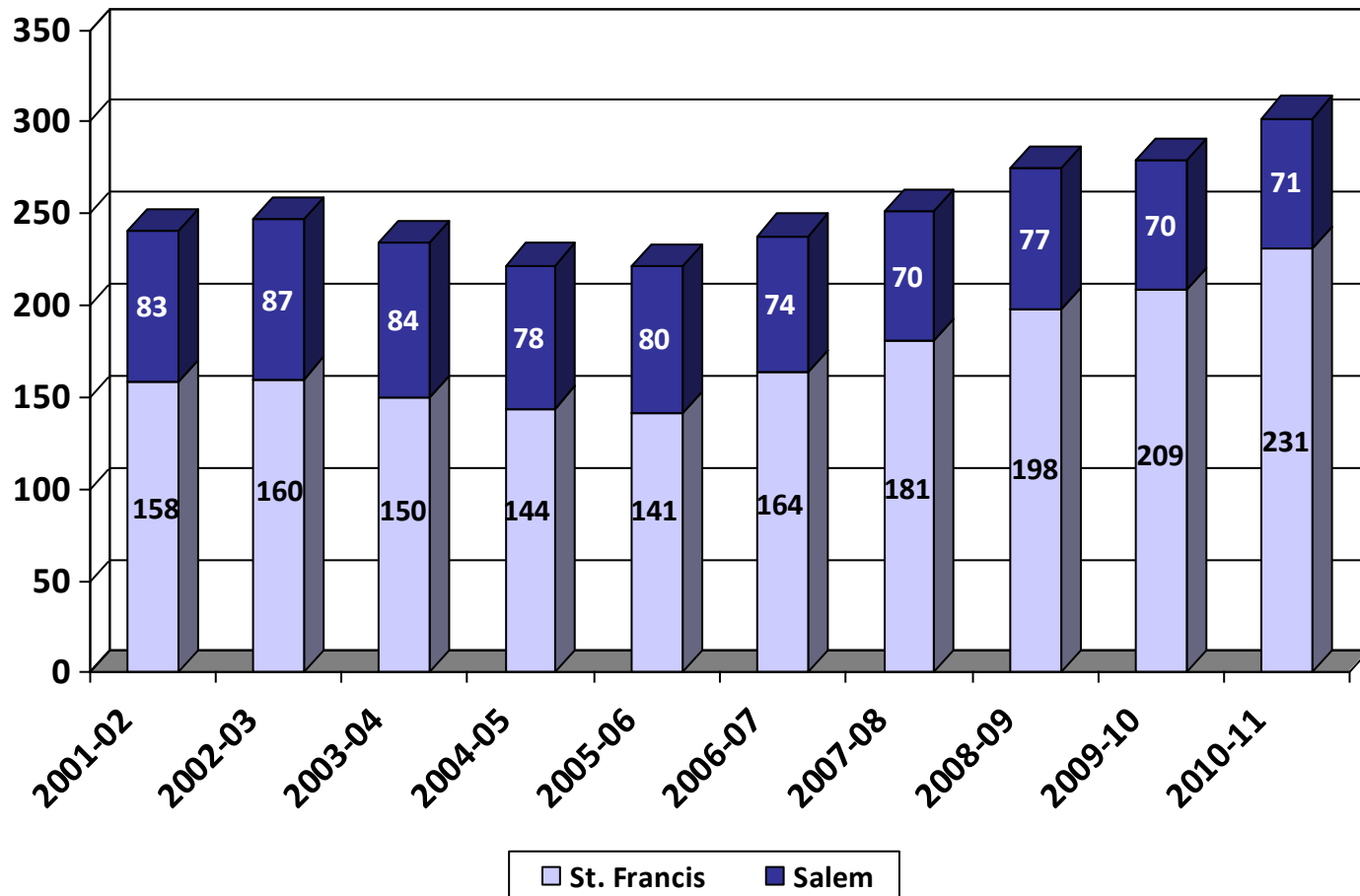
# Nonpublic History

---

- Two nonpublic schools in the BHM district: St. Francis Xavier, Buffalo and Salem Lutheran, Loretto.
- Both schools serve students from kindergarten through 8<sup>th</sup> grade.

	01-02	02-03	03-04	04-05	05-06	06-07	07-08	08-09	09-10	10-11
<b>St. Francis</b>	158	160	150	144	141	164	181	198	209	231
<b>Salem</b>	83	87	84	78	80	74	70	77	70	71
<b>Total</b>	<b>241</b>	<b>247</b>	<b>234</b>	<b>222</b>	<b>221</b>	<b>238</b>	<b>251</b>	<b>275</b>	<b>279</b>	<b>302</b>
<b># Change</b>	-29	6	-13	-12	-1	17	13	24	4	23
<b>% Change</b>	-10.7%	2.5%	-5.3%	-5.1%	-0.5%	7.7%	5.5%	9.6%	1.5%	8.2%

# Nonpublic History



# 2009-10 Enrollment Fall vs. Spring

---

- Historically, the district's K-12 enrollment decreases from October 1 to June 1.
- Most of the enrollment drops happen in grades 9-12.

	<b>Oct. 1<sup>st</sup>, 2009</b>	<b>Jun. 1<sup>st</sup>, 2010</b>	<b>Net</b>
<b>K</b>	434	432	-2
<b>Gr. 1-5</b>	2,231	2,245	14
<b>Gr. 6-8</b>	1,262	1,245	-17
<b>Gr. 9-12</b>	1,813	1,755	-58
<b>Total</b>	5,740	5,677	-63

# Historical Enrollment

## Fall vs. Spring

---

- The district had a couple years of enrollment growth during the year (2000-01 & 2001-02) and one flat year (2006-07).

	K	Gr. 1-5	Gr. 6-8	Gr. 9-12	Net
<b>2000-01</b>	7	42	16	-34	31
<b>2001-02</b>	2	33	6	-35	6
<b>2002-03</b>	-1	33	14	-51	-5
<b>2003-04</b>	5	-37	-3	-49	-10
<b>2004-05</b>	-1	0	3	-55	-53
<b>2005-06</b>	4	-1	-9	-56	-62
<b>2006-07</b>	-2	-25	10	-33	0
<b>2007-08</b>	9	3	3	-55	-40
<b>2008-09</b>	0	0	-24	-84	-108
<b>2009-10</b>	-2	14	-17	-58	-63



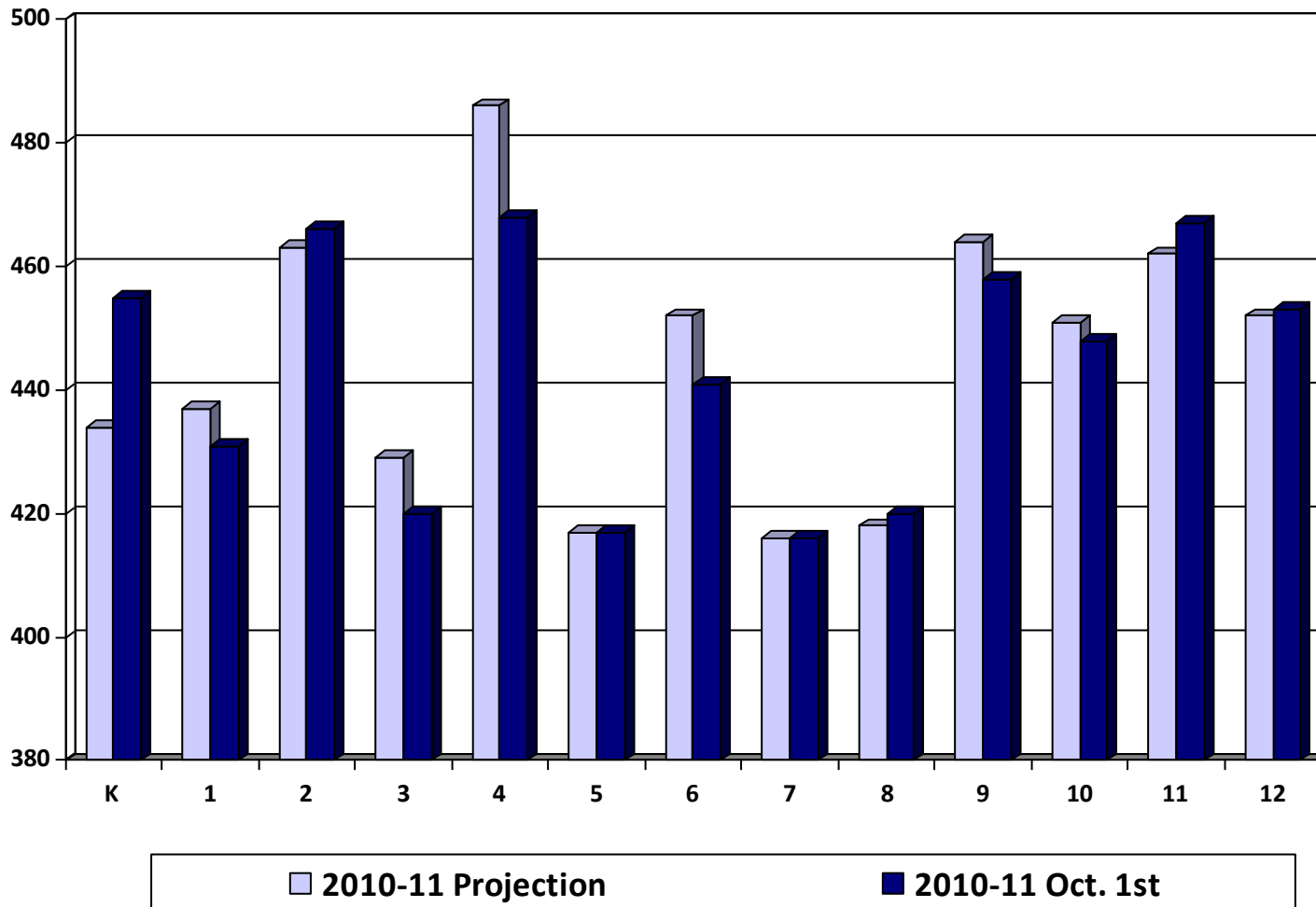
# Review of 2010-11 Enrollment Projection

---

- Last year's enrollment projection was over-estimated by 21 students.
- Our internal monthly enrollment reports adjust down post-secondary and shared time students.
- The official Oct. 1<sup>st</sup> MARSS submission by MDE will report a higher enrollment with post-secondary and shared time students.

	<b>2010-11 Projection</b>	<b>2010-11 Oct. 1<sup>st</sup></b>	<b>Difference</b>
<b>K</b>	434	455	21
<b>Gr. 1-5</b>	2,232	2,202	-30
<b>Gr. 6-8</b>	1,286	1,277	-9
<b>Gr. 9-12</b>	1,829	1,826	-3
<b>Total</b>	5,781	5,760	-21

# Review of 2010-11 Enrollment Projection by Grade





# Enrollment Projection Data

---

- The district uses the Schoolfinances.com enrollment projection model.
- The model allows schools to develop enrollment projections based on three different sets of data:
  - **October 1<sup>st</sup> MARSS submission**
  - **End of Year ADM** is generally used for financial forecast
  - **District Data** allows schools to enter enrollment history taken at any time, resident ADM or any other historical data by grade



# Kindergarten Projection Methods

---

- **Hold constant** maintains the 2010-11 kindergarten level.
- **Linear projection** is a straightforward mathematical projection based on nothing more than the past five years of data.
- **County birth method** uses the total number of live births in Wright County and examines what percentage of those births enroll in kindergarten. The projection is based on the average percentage of the last four years.
- **Zip code method** examines the zip codes in the district and uses a linear projection of live births on the last four years of data and computes the projected enrollment based on the lowest, average, and highest ratios.



# Kindergarten Projection Methods

Birth Year	Kdgn Enroll Year	Wright Co. Births	BHM Zip Code Births	Actual Kdgn Enrollment	% of Wright Co. Births Enrolled
1999	2004	1,406	333	429	30.5%
2000	2005	1,423	326	413	29.0%
2001	2006	1,499	348	494	33.0%
2002	2007	1,679	428	413	24.6%
2003	2008	1,926	471	464	24.1%
2004	2009	1,888	491	434	23.0%
2005	2010	2,023	523	455	22.5%
2006	2011	2,152	494	452*	21.0%*
2007	2012	2,183	553	458*	21.0%*
2008	2013	2,095	492	440*	21.0%*
2009	2014	1,943	463	408*	21.0%*

\* Projected K enrollment based on County births

# Kindergarten Projection Methods

---

- Using Oct. 1<sup>st</sup> district data

	06-07	07-08	08-09	09-10	10-11	11-12	12-13	13-14	14-15	15-16
<b>Actual enrollment</b>	495	413	464	434	455					
<b>Hold constant</b>						455	455	455	455	455
<b>Linear projection</b>						456	459	462	465	468
<b>Wright Co. births</b>						528	539	545	522	483
<b>Zip code method - L</b>						<b>438</b>	<b>464</b>	<b>446</b>	<b>411</b>	<b>416</b>

# Enrollment Projection Methods

---

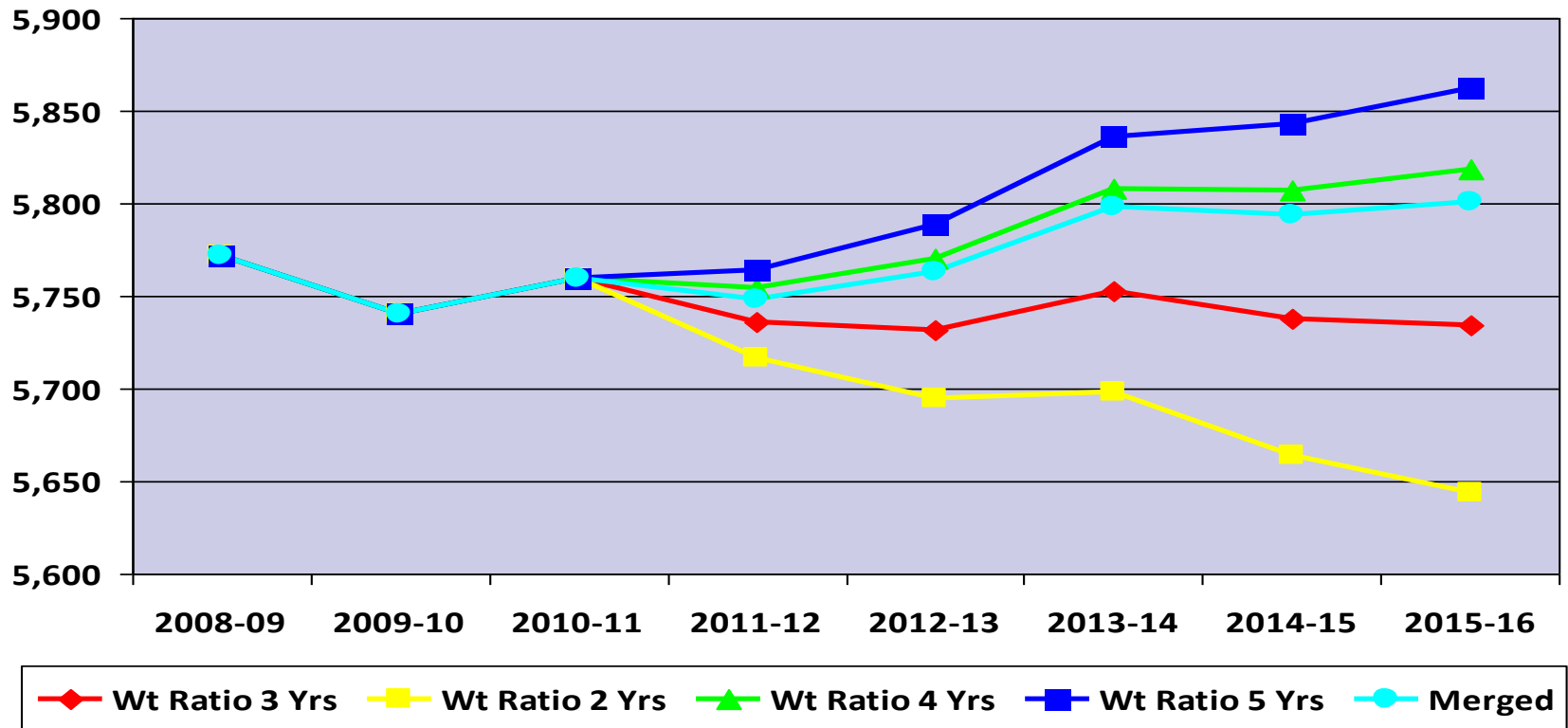
- After the kindergarten enrollment projection is complete, the overall K-12 enrollment is determined by a variety of methods:
  - Cohort Survival Method
  - Weighted Cohort Survival Method
  - Numerical Survival Method
  - Weighted Numerical Survival Method
  - Merged Method

# Projection Methods Comparison

- Using Oct. 1<sup>st</sup> district data, seventeen different variations were examined.
- The following five were selected for detailed analysis:

	<b>08-09</b>	<b>09-10</b>	<b>10-11</b>	<b>11-12</b>	<b>12-13</b>	<b>13-14</b>	<b>14-15</b>	<b>15-16</b>
<b>Wt Ratio 2 Yrs</b>	5,772	5,740	5,760	5,717	5,695	5,698	5,664	5,644
<b>Wt Ratio 3 Yrs</b>	5,772	5,740	5,760	5,736	5,732	5,753	5,738	5,734
<b>Wt Ratio 4 Yrs</b>	5,772	5,740	5,760	5,754	5,770	5,808	5,807	5,818
<b>Wt Ratio 5 Yrs</b>	5,772	5,740	5,760	5,764	5,789	5,836	5,843	5,862
<b>Merged</b>	<b>5,772</b>	<b>5,740</b>	<b>5,760</b>	<b>5,748</b>	<b>5,763</b>	<b>5,798</b>	<b>5,794</b>	<b>5,801</b>
<b>Max Difference</b>				47	94	138	179	218

# Projection Methods Comparison





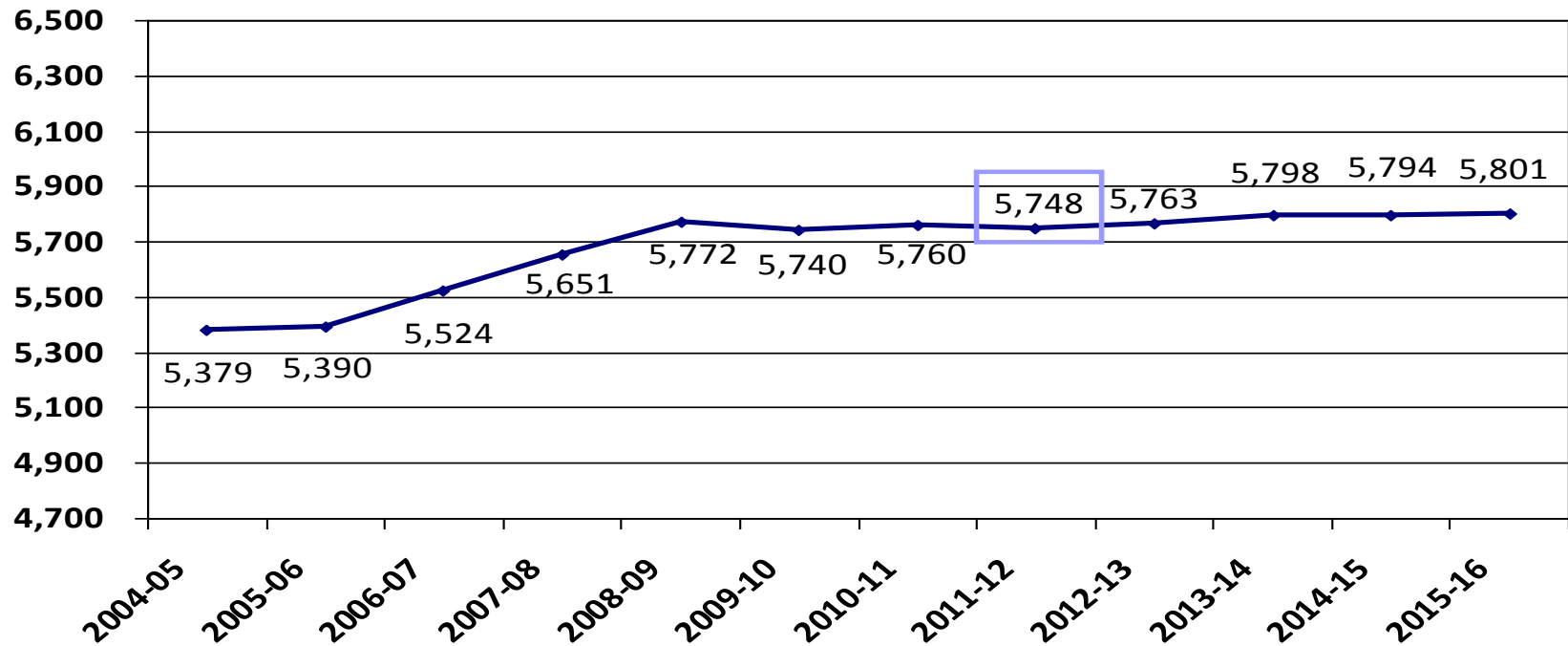
# 2011-12 Enrollment Projection

---

- Factors considered: housing market, economic conditions, Wright County births, open enrollment, and budget reductions
- Merged Method
- K-12 Enrollment 5,748
- Decrease of 12 students or 0.20%



# 2011-12 Enrollment Projection



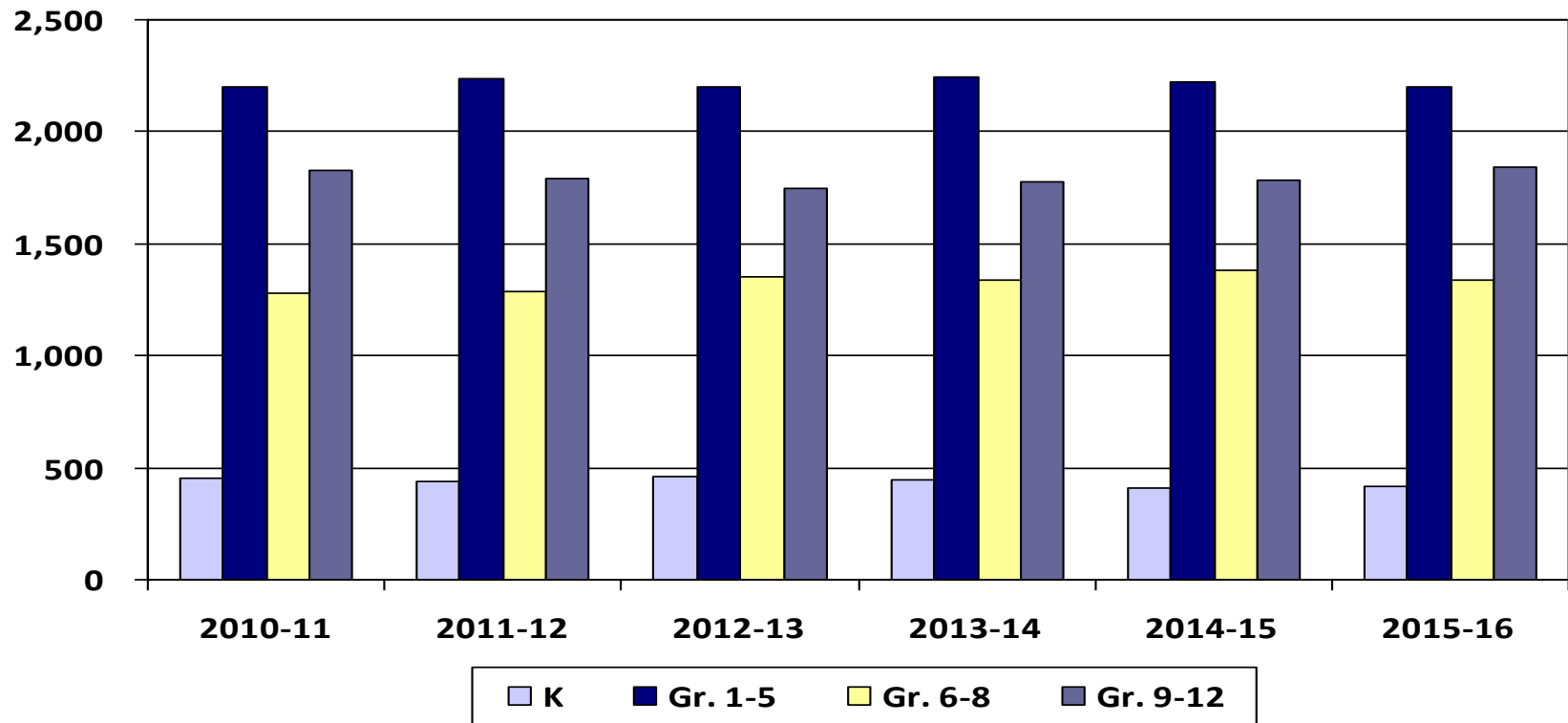


# 2011-12 Enrollment Projection by Grade Groupings

- With future enrollments, need to consider building capacity:
  - BHS – 1,935 PHX – 64 and PRIDE – 25
  - BCMS – 1,375
  - Elementary – 3,200

	2010-11	2011-12	2012-13	2013-14	2014-15	2015-16
<b>K</b>	455	<b>438</b>	464	446	411	416
<b>Gr. 1-5</b>	2,202	<b>2,234</b>	2,199	2,241	2,220	2,200
<b>Gr. 6-8</b>	1,277	<b>1,285</b>	1,353	1,337	1,383	1,341
<b>Gr. 9-12</b>	1,826	<b>1,791</b>	1,747	1,774	1,780	1,844
<b>Total</b>	5,760	<b>5,748</b>	5,763	5,798	5,794	5,801
		<b>-12</b>	15	35	-4	7
		<b>0.20%</b>	0.26%	0.61%	-0.06%	0.12%

# 2011-12 Enrollment Projection by Grade Groupings

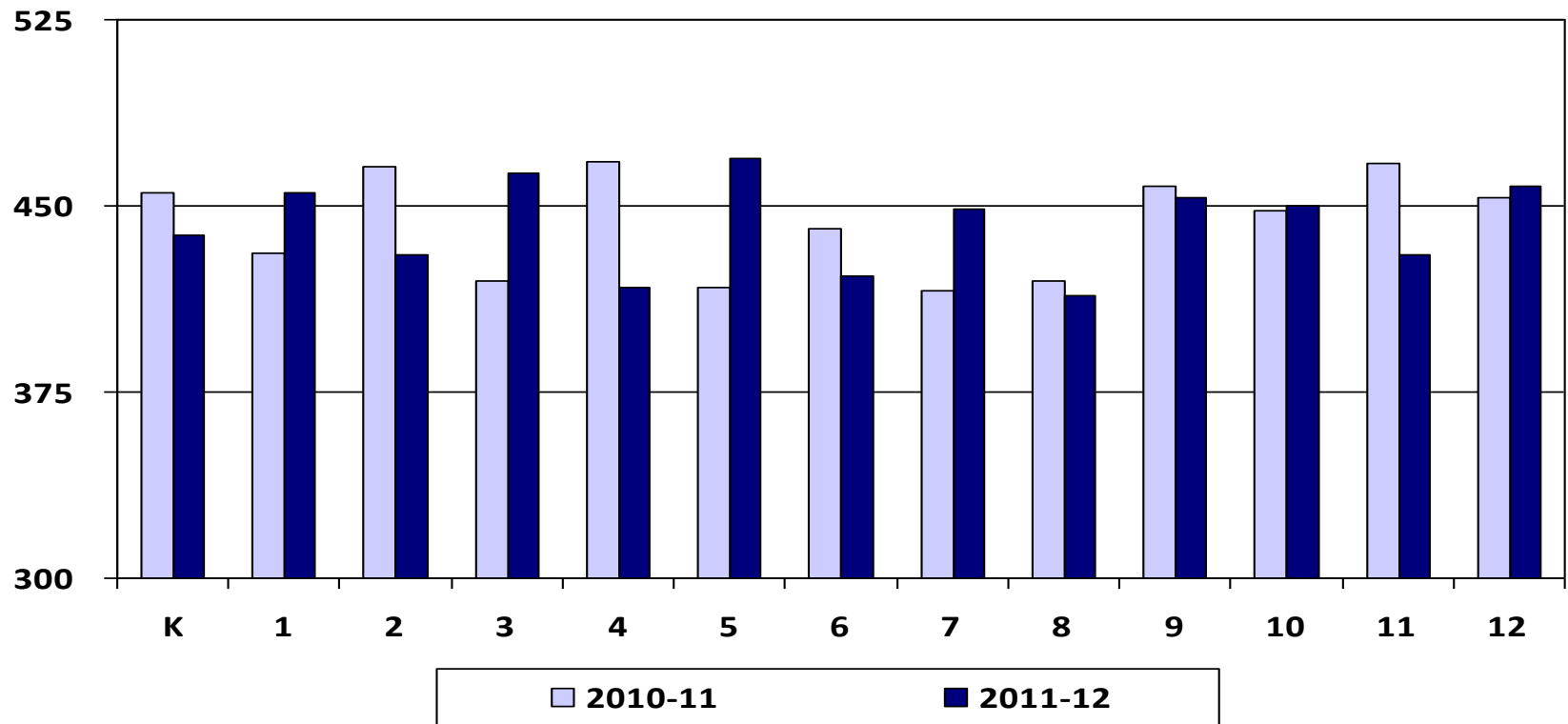




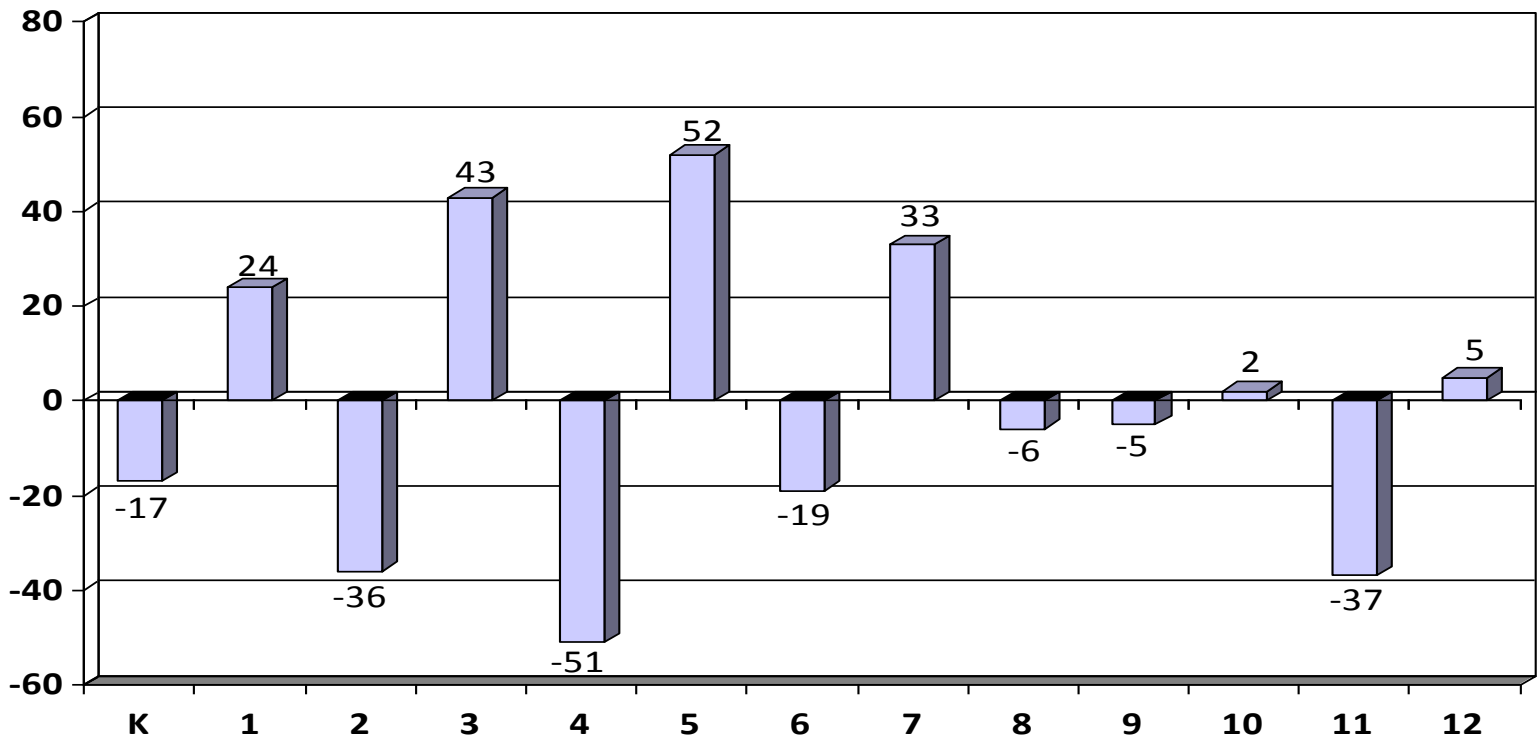
# 2011-12 Enrollment Projection by Grade

	2010-11	2011-12	2012-13	2013-14	2014-15	2015-16
K	455	<b>438</b>	464	446	411	416
1	431	<b>455</b>	438	464	446	411
2	466	<b>430</b>	454	437	463	445
3	420	<b>463</b>	428	452	435	461
4	468	<b>417</b>	461	426	449	433
5	417	<b>469</b>	418	462	427	450
6	441	<b>422</b>	475	424	468	433
7	416	<b>449</b>	431	484	433	477
8	420	<b>414</b>	447	429	482	431
9	458	<b>453</b>	447	482	463	518
10	448	<b>450</b>	446	440	475	456
11	467	<b>430</b>	433	428	422	456
12	453	<b>458</b>	421	424	420	414
<b>Total</b>	5,760	<b>5,748</b>	5,763	5,798	5,794	5,801

# 2010-11 & 2011-12 Enrollment Projection by Grade



# 2011-12 Enrollment Change by Grade



# WADM Report

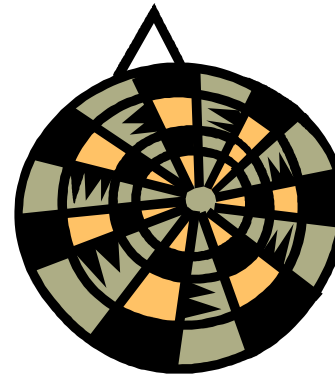
- The weighted average daily membership (WADM) projection shows a relatively flat projection in student aid.
- Keep in mind the district's enrollment history tends to decline from Oct. 1<sup>st</sup> to June 1<sup>st</sup>.

	2011-12		2012-13		2013-14		2014-15	
	Enroll	WADM	Enroll	WADM	Enroll	WADM	Enroll	WADM
HK	33	<b>33</b>	35	<b>35</b>	33	<b>33</b>	31	<b>31</b>
K	405	<b>248</b>	429	<b>263</b>	413	<b>253</b>	380	<b>233</b>
Gr. 1-3	1,348	<b>1,503</b>	1,320	<b>1,472</b>	1,353	<b>1,509</b>	1,344	<b>1,499</b>
Gr. 4-6	1,308	<b>1,386</b>	1,354	<b>1,435</b>	1,312	<b>1,391</b>	1,344	<b>1,425</b>
Gr. 7-8	863	<b>1,122</b>	878	<b>1,141</b>	913	<b>1,187</b>	915	<b>1,190</b>
Gr. 9-12	1,791	<b>2,328</b>	1,747	<b>2,271</b>	1,774	<b>2,306</b>	1,780	<b>2,314</b>
ECSE	114	<b>143</b>	121	<b>151</b>	116	<b>145</b>	107	<b>134</b>
<b>Total</b>	5,862	<b>6,763</b>	5,884	<b>6,768</b>	5,914	<b>6,824</b>	5,901	<b>6,826</b>

# Conclusion

---

- Uncertain economic factors make enrollment projections difficult.
- BHM's enrollment is projected to remain relatively flat for at least the next three to five years.



5,748