

Building Brighter Futures

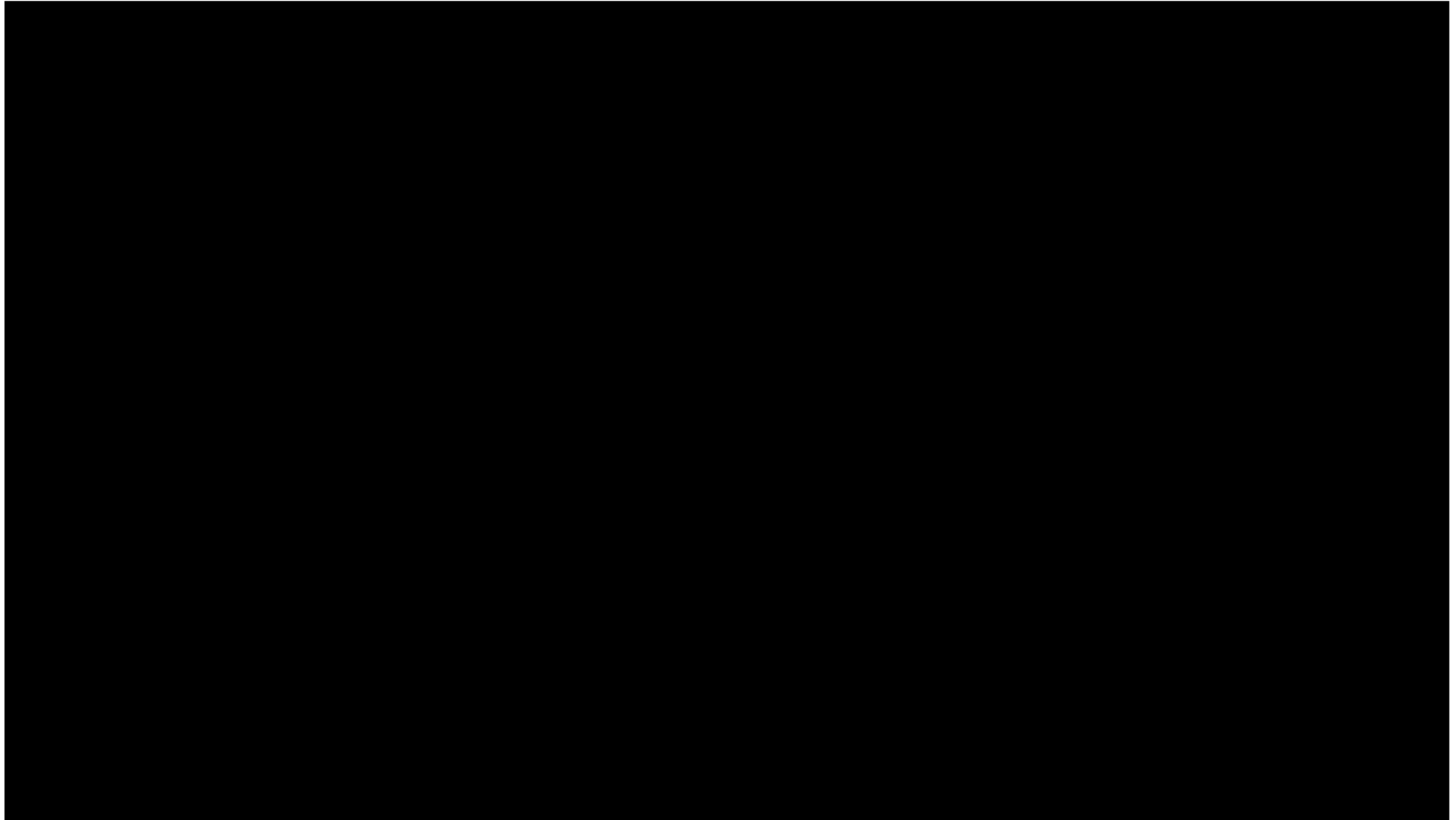
A Vision for Future-Ready Student Success

Apollo High School & 742 Multipurpose Facility
Bond Referendum

St. Cloud Area
School District



We Deliver On Our Promises.





Safety and Security

Our district's mission starts with the commitment to "provide a SAFE and caring climate and culture."

All schools in our district have a controlled entrance except Apollo High School.

To add a permanent controlled entrance, we must build a storm shelter per recent building code.

Additional updates in the referendum plans include life safety systems.

We provide rigorous access to state standards.

2023

4 Year Graduation Rates:

- Tech = 75.3%
- Apollo = 75.3%

7 Year Graduation Rate:

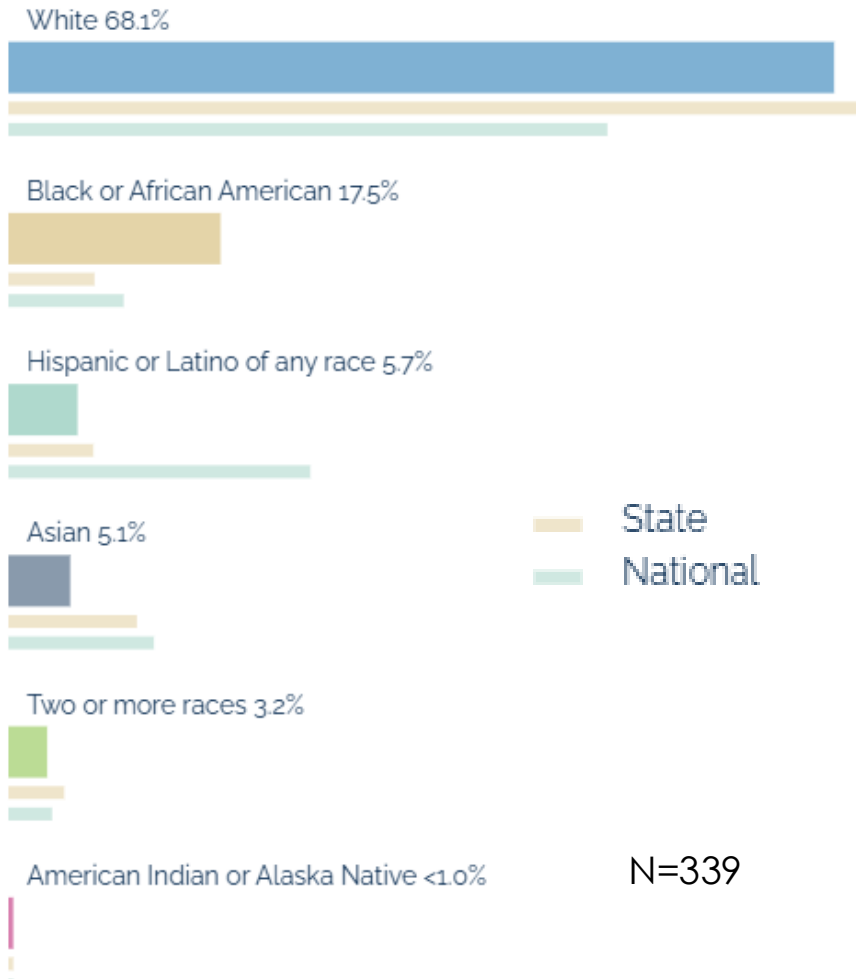
- Districtwide = 78.2%



Academic
Excellence is
the Foundation

Accelerated Learning Provides Avenues to Success

Advanced Placement (AP) Courses

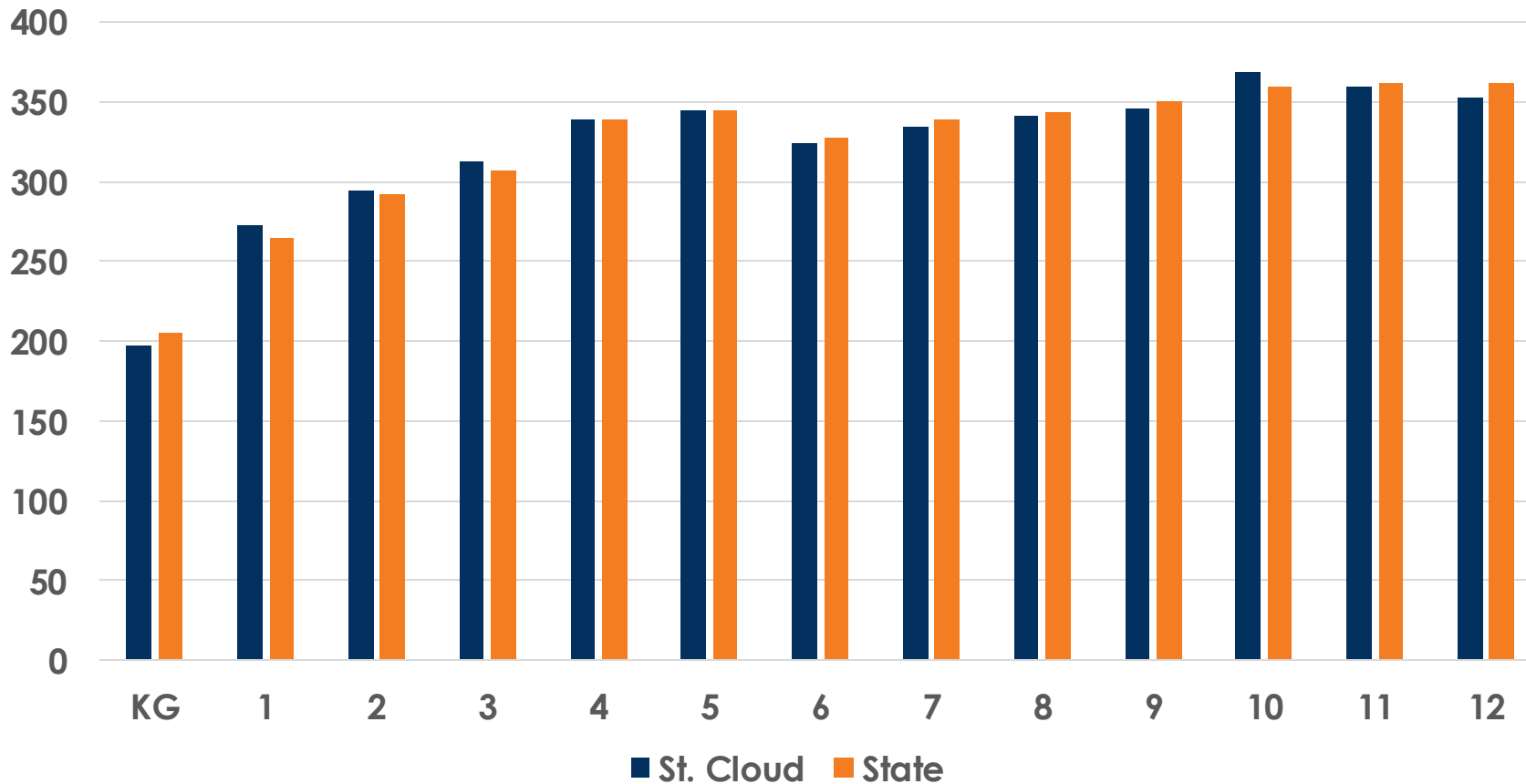


Nearly 80 Awards in 7 Languages - Bilingual Certifications in Spanish, German, Russian, Chinese, Somali, French and Arabic.

Nearly 20% of students currently earning college credit through coursework in AP, College in the Schools, and PSEO.

Quality Bilingual Education is a Pathway to Multilingualism

Comparison of Mean Composite Scale Scores - ACCESS for ELs by Grade Level



St. Cloud to help Minnesota raise the bar for English Language Learners.

When considering mean scores, language learners in St. Cloud mirror performance of all English Language Learners across the state.

Individualized
Learning is a
Priority

87.4 %

Students
Meeting IEP
Reading Goals



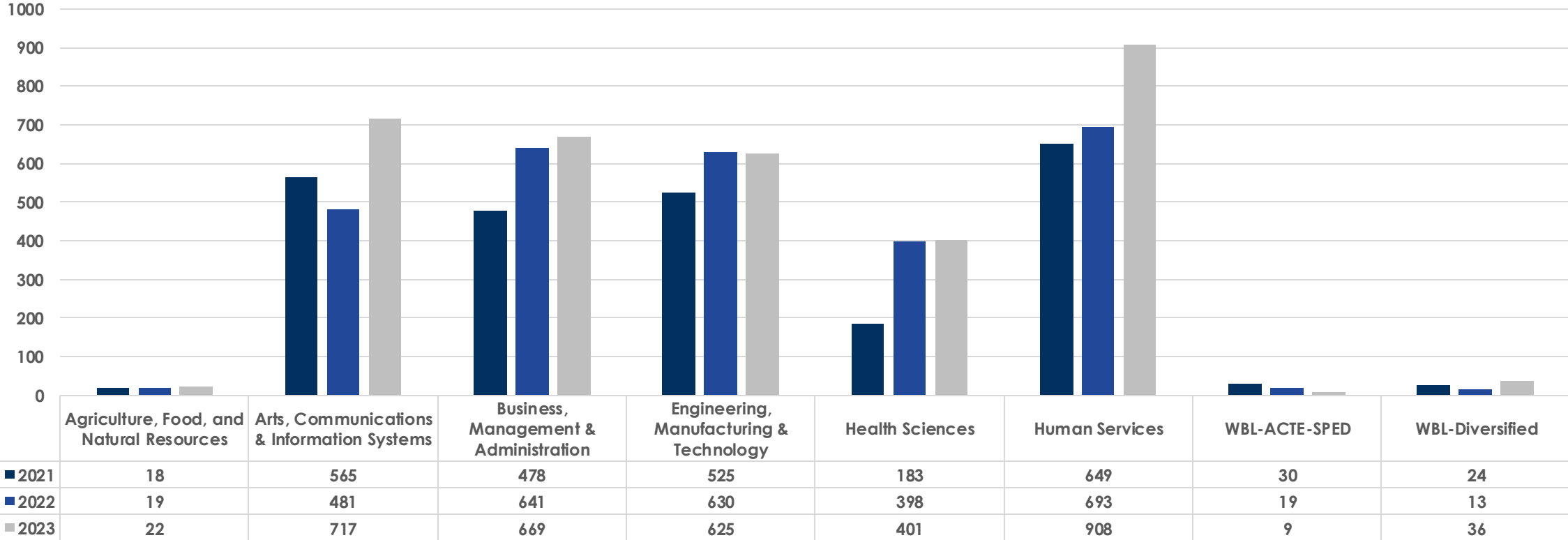
84.7%

Students
Meeting Math
IEP Goals



Access to Career Pathways Provides Real-World Meaning

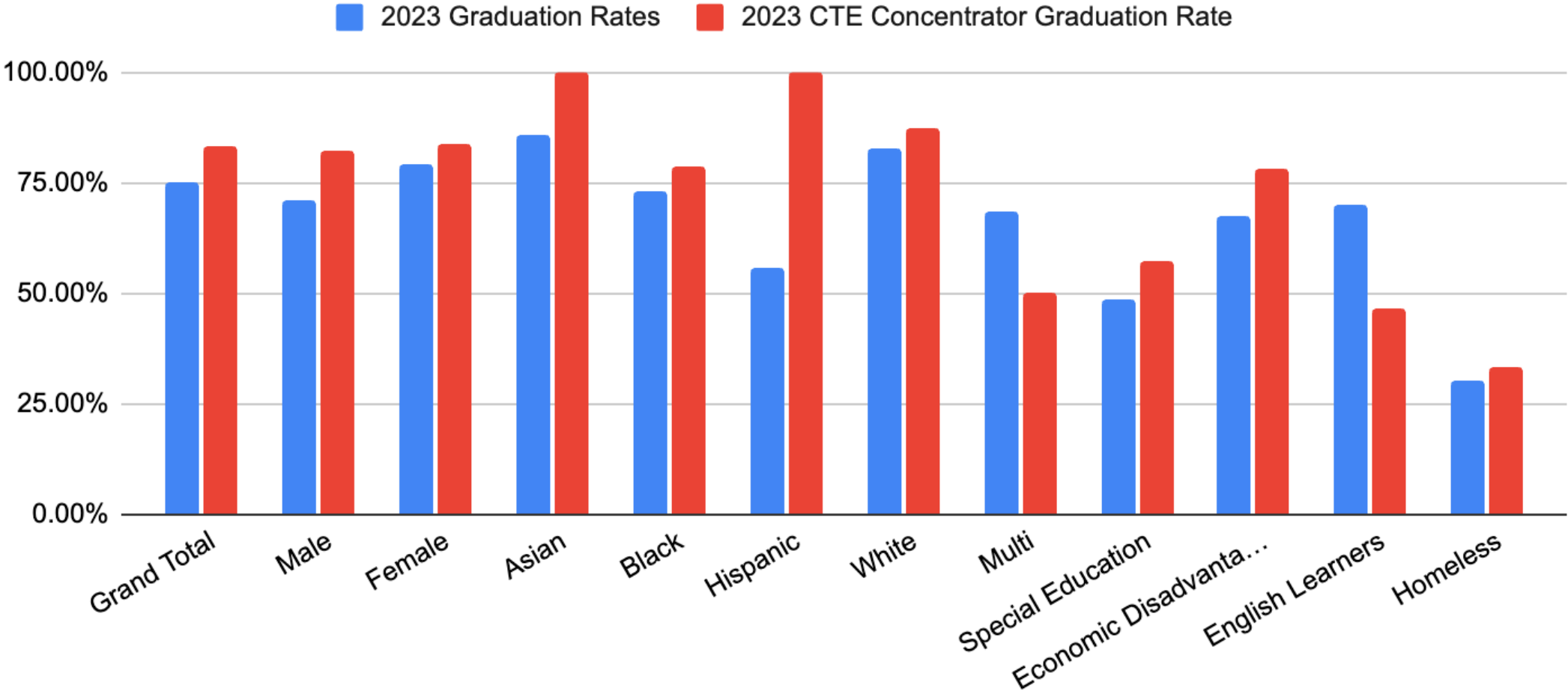
Participation in Career and Technical Education by Category



2021 2022 2023

Career Preparation & High School Success in 742

2023 Graduation Rates vs 2023 CTE Concentrator Graduation Rate



Boundless Opportunities

Apollo Advanced Pathways



Data and Computer Science



Engineering, Manufacturing and Mechanics



Creative and Performing (Fine) Arts



Food Sciences and Culinary Arts



Emergency Management Responses

Tech Advanced Pathways



Communications



Construction and Building Trades



Environmental Sciences



Health Careers



Robotics

Future-Ready
Students
Need More
than Just
Knowledge



Workforce Skills

- Collaboration
- Communication
- Creativity
- Critical Thinking

Character

- Wisdom
- Resilience
- Courage
- Ethics
- Adaptability

Future-Ready Students Need Flexible Learning Environments



The future of learning and work is rapidly changing.

Our community's workforce needs change over time.

Our high schools must have flexible infrastructure to meet these changing demands.

We are a fiscally responsible school district with a history of balanced budgets.

We employed one-time, use-or-lose state and federal funds to update Apollo facilities and technology over the last two years.

Through this careful stewardship of funds, we can reduce the overall cost of the referendum.

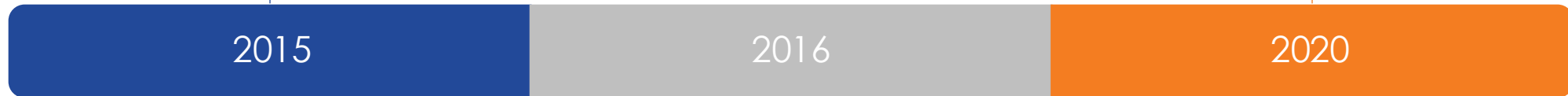


Fiscal
Responsibility

History of Apollo Facilities Referendum

1 Question = \$113.8M for New Tech & \$46.5M for Renovated Apollo totalling \$160.3M – Question Failed

Prepared to bring 1 question for renovated Apollo for \$53.5M, Superintendent Advisory convened Feb, COVID shut-down in March, referendum paused



2 Questions = New Tech \$104.5M and Renovated Apollo for \$38.75M; Q1 passed, Q2 failed



Apollo Facilities Referendum

Administrative Recommendation for
the Facilities Referendum:

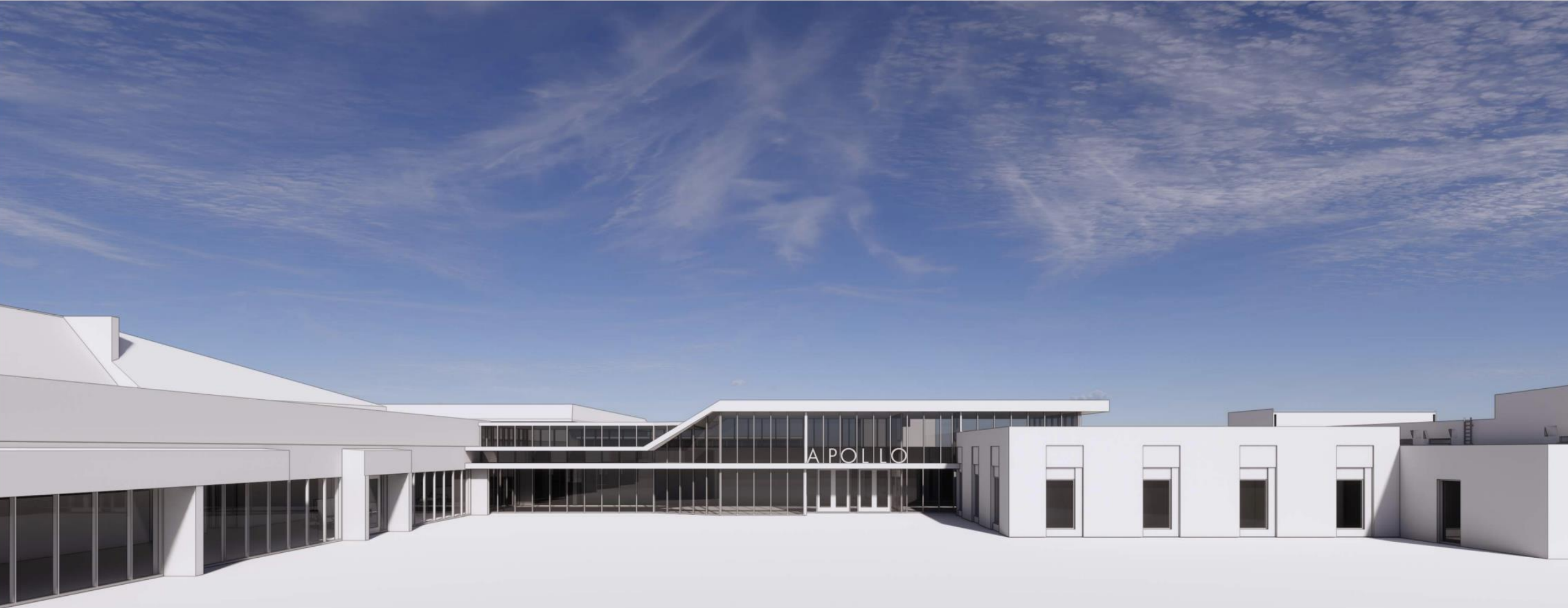
Question 1

Provide necessary updates to Apollo High School including a controlled entrance and flexible learning spaces, totaling \$50M.

A Redesigned Apollo High School: Main Entrance



A Redesigned Apollo High School: Main Entrance



A Redesigned Apollo High School: Activities Entrance

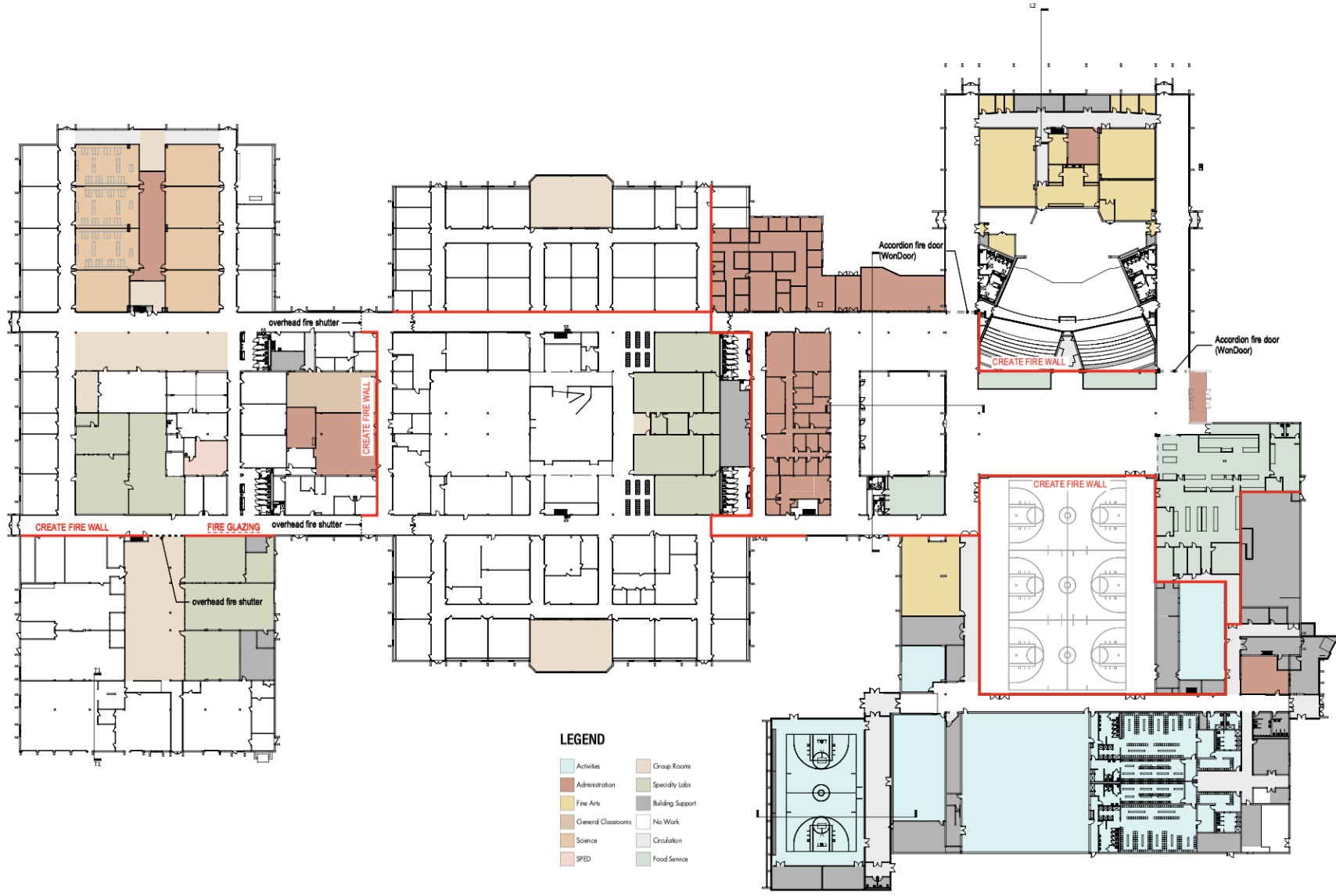


© 2024 JLG ARCHITECTS

APOLLO HIGH SCHOOL IMPROVEMENTS
ACTIVITIES ENTRANCE

11/04/24 | JLG 18230 | © 2024 JLG ARCHITECTS





LEGEND

- | | | | |
|--|--------------------|--|------------------|
| | Activities | | Group Rooms |
| | Administration | | Specialty labs |
| | Fine Arts | | Building Support |
| | General Classrooms | | No Work |
| | Science | | Circulation |
| | SPED | | Food Service |



APOLLO HIGH SCHOOL IMPROVEMENTS

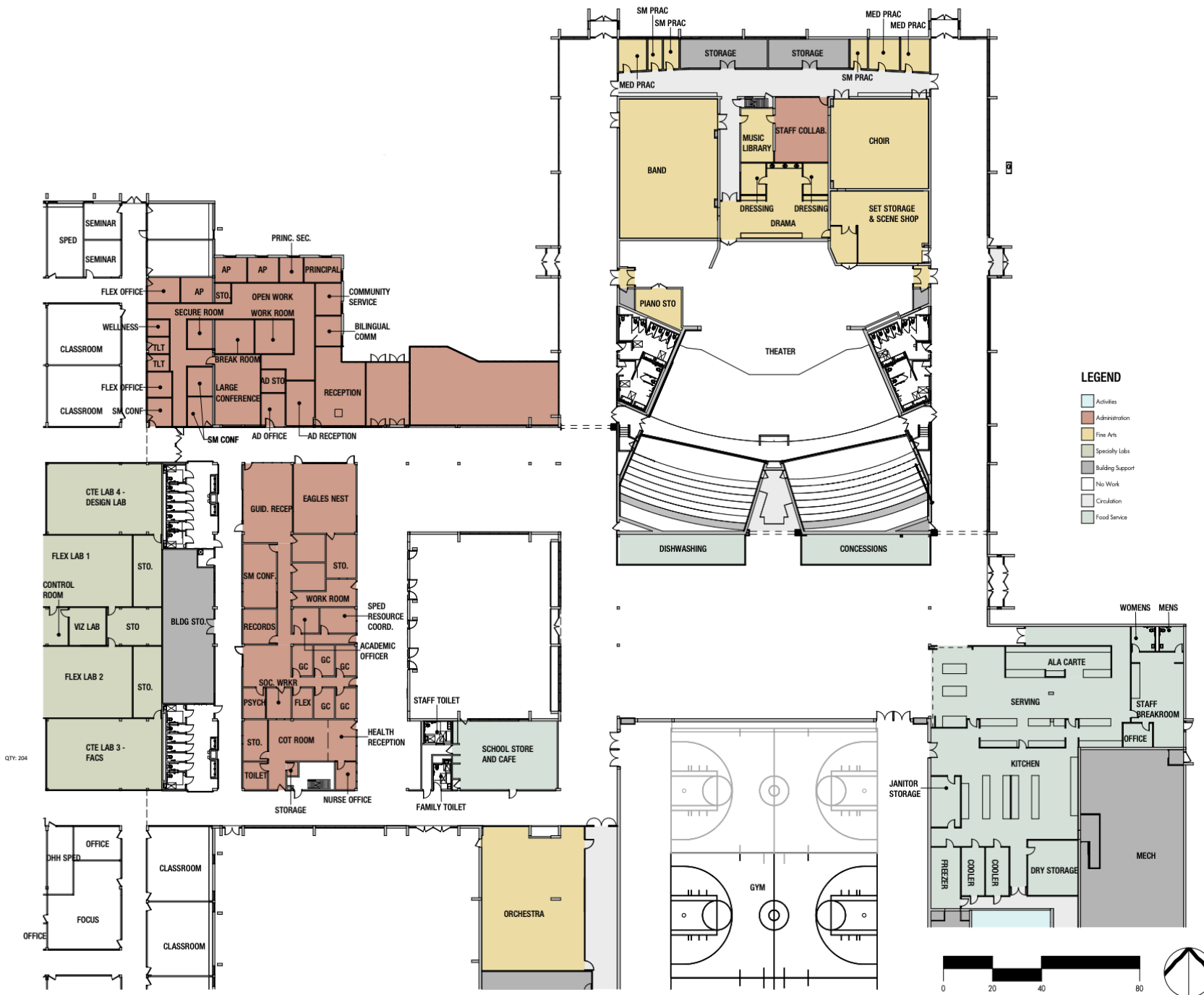
OVERALL FLOOR PLAN



APOLLO HIGH SCHOOL IMPROVEMENTS

KITCHEN & SERVING OPTION

09/20/24 | JLG 19230 | © 2024 JLG ARCHITECTS



LEGEND

- Activities
- Administration
- Fine Arts
- Specialty Labs
- Building Support
- No Work
- Circulation
- Food Service



APOLLO HIGH SCHOOL IMPROVEMENTS

FINE ARTS & ADMIN

09/20/24 | JLG 19230 | © 2024 JLG ARCHITECTS

QTY: 204



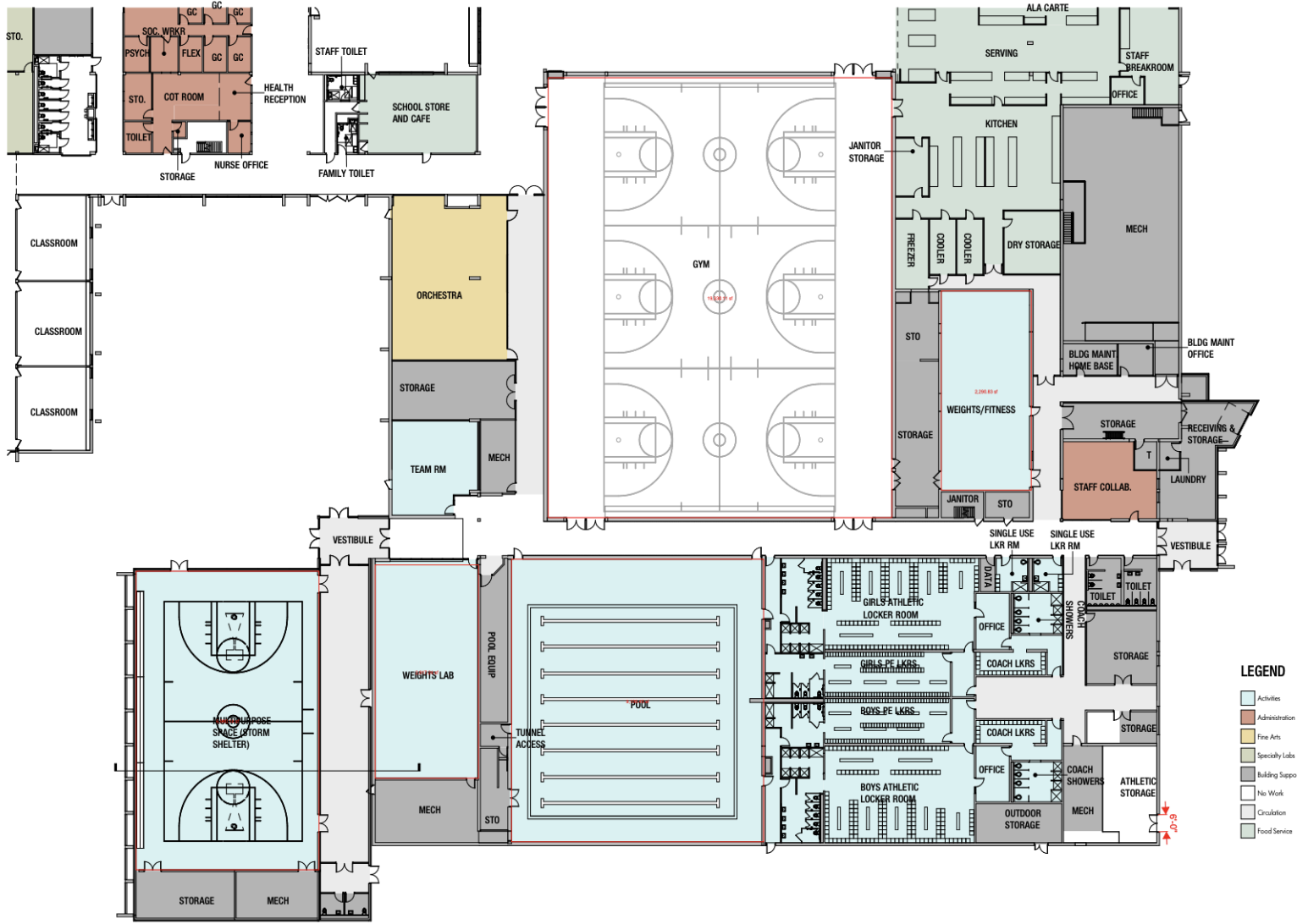
APOLLO HIGH SCHOOL IMPROVEMENTS

LEARNING NEIGHBORHOODS

09/04/24 | JLG 19230 | © 2024 JLG ARCHITECTS

- LEGEND**
- Administration
 - General Classrooms
 - Science
 - SPED
 - Group Rooms
 - Specialty Labs
 - Building Support
 - No Work
 - Circulation



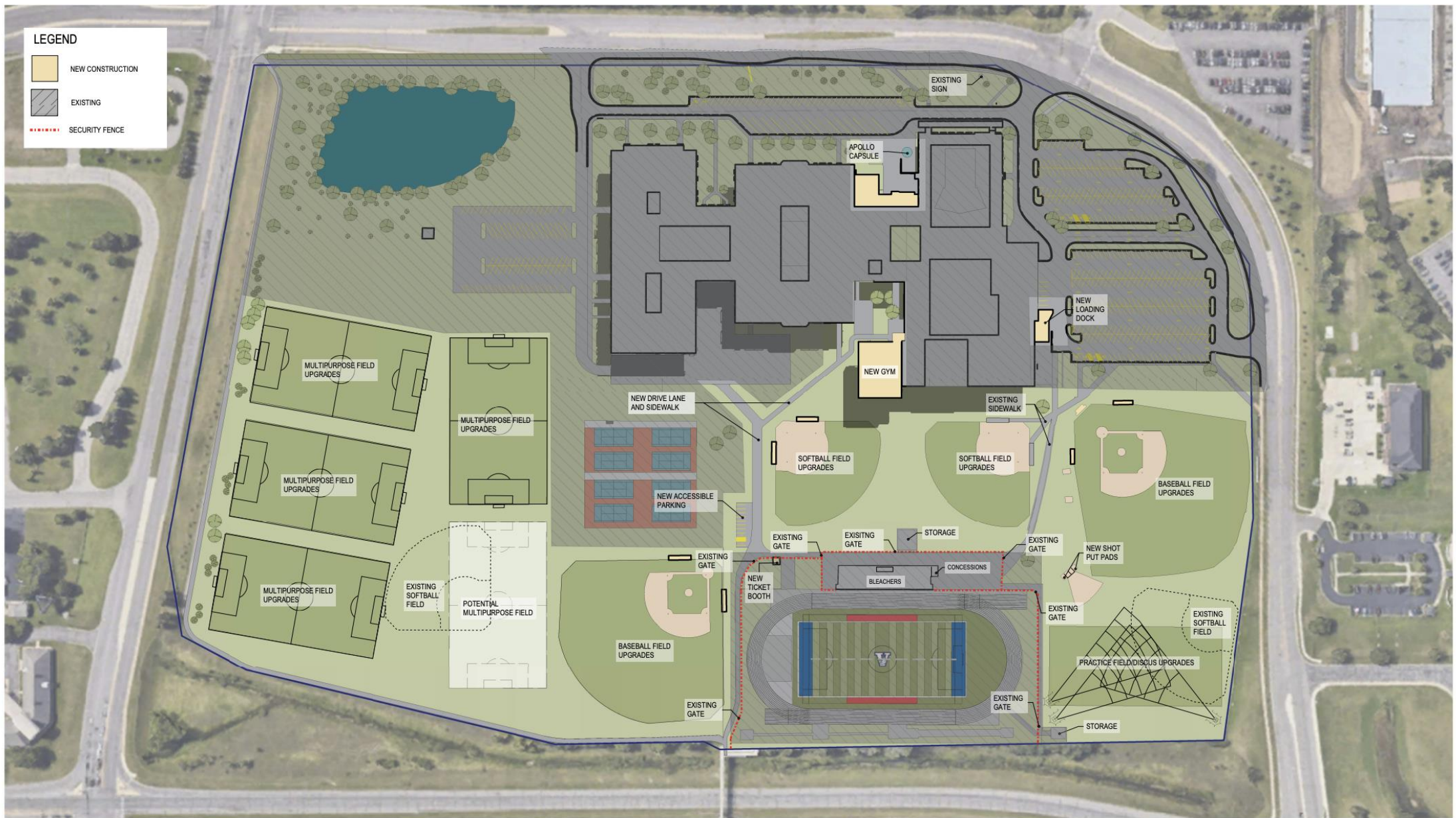


APOLLO HIGH SCHOOL IMPROVEMENTS

ACTIVITIES

09/04/24 | JLG 19230 | © 2024 JLG ARCHITECTS





APOLLO HIGH SCHOOL IMPROVEMENTS

SITE PLAN

09/24/24 | JLG 19230 | © 2024 JLG ARCHITECTS



A decorative graphic on the left side of the slide, consisting of overlapping blue triangles and polygons in various shades of blue, creating a modern, geometric look.

ISD Multi- Purpose Facility Referendum

Administrative Recommendation for
the Facilities Referendum:

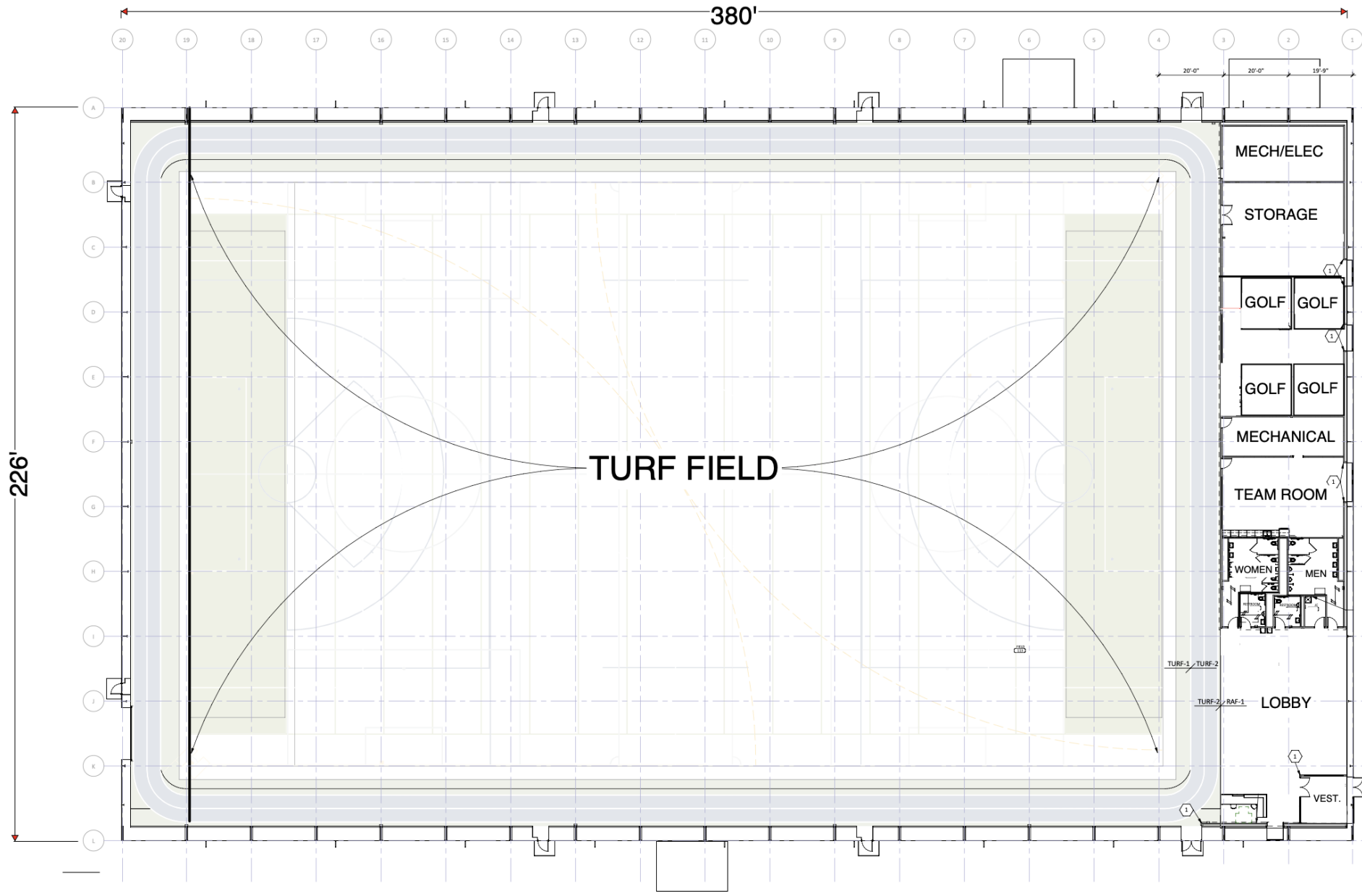
Question 2

Build an ISD742 Indoor Multipurpose Facility on the Apollo grounds to host a variety of physical activities, totaling \$15M.

This facility will be available for public use and rental.

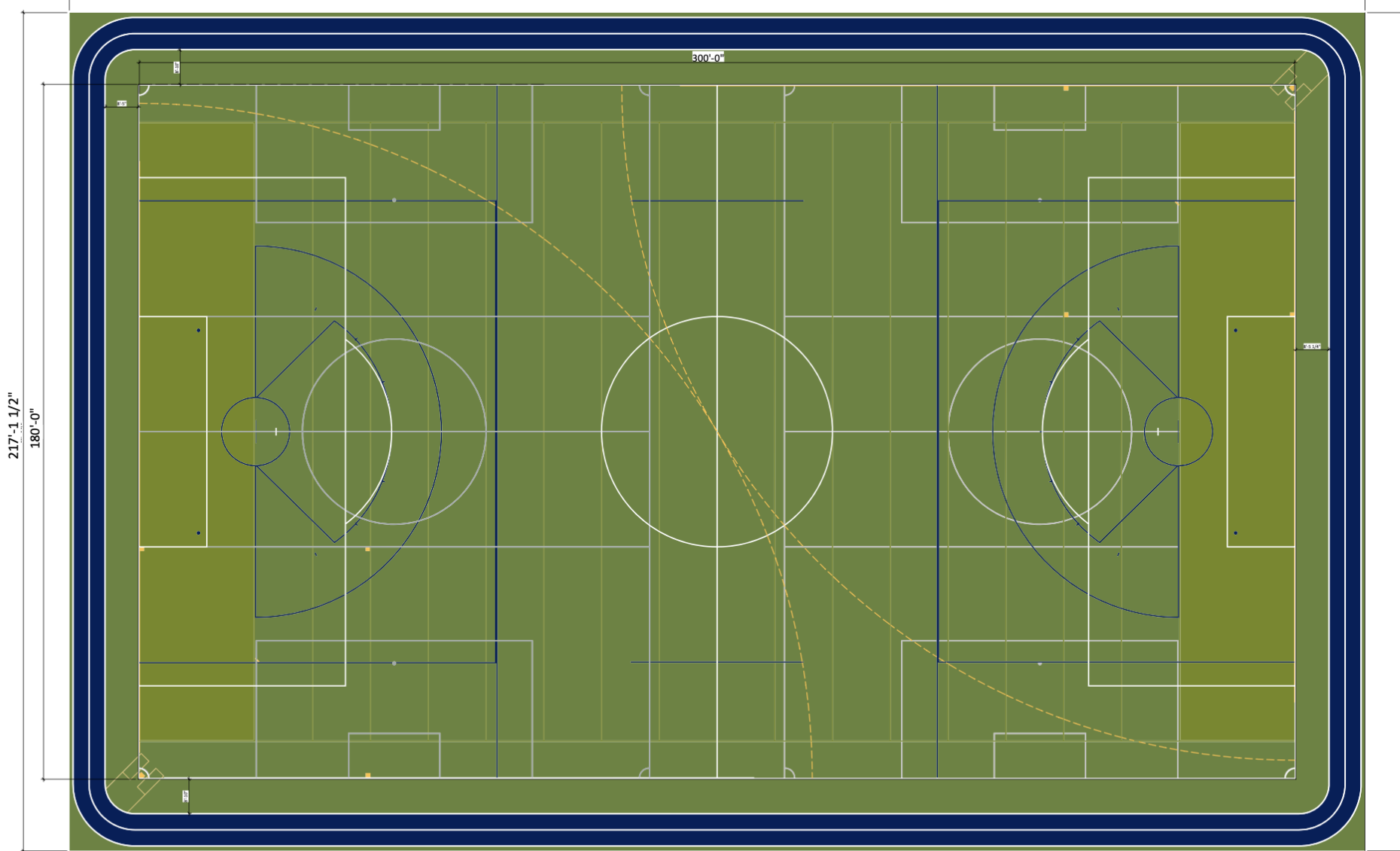


742 Multipurpose Facility



APOLLO HIGH SCHOOL IMPROVEMENTS

742 MULTI-PURPOSE CENTER CONCEPT



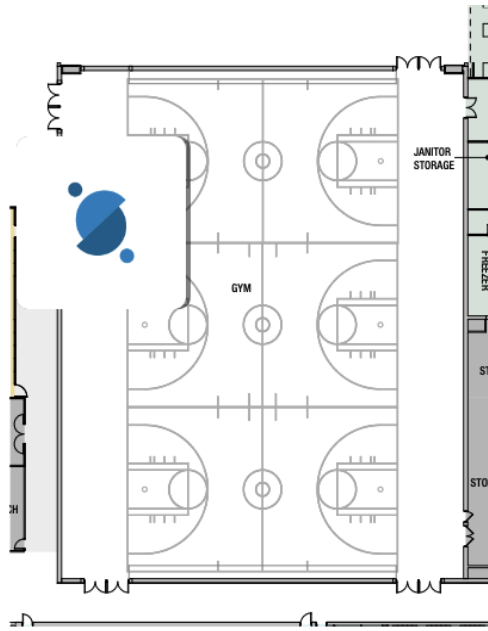
- FIELD STRIPING HIERARCHY**
- PRIMARY SOCCER - White 4" LINE
 - SECONDARY SOCCER - Gray 4" LINE
 - SOFTBALL -Bright Yellow 4" LINE
 - LACROSSE - Florida Blue 4" LINE
 - Field - Field Green 4" LINE
 - Football - Lime Green 4" LINE
 - Walking Track- Florida Blue 4" LINE

APOLLO HIGH SCHOOL IMPROVEMENTS

742 MULTI-PURPOSE CENTER CONCEPT

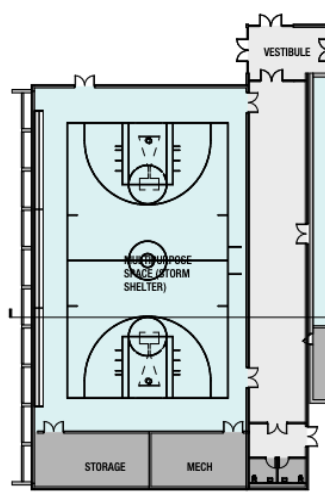
10/22/24 | JLG 19230 | © 2024 JLG ARCHITECTS





MAIN GYM

Wood Floor
 PE, Basketball, Volleyball, Dance, and Wrestling Practice and Performance

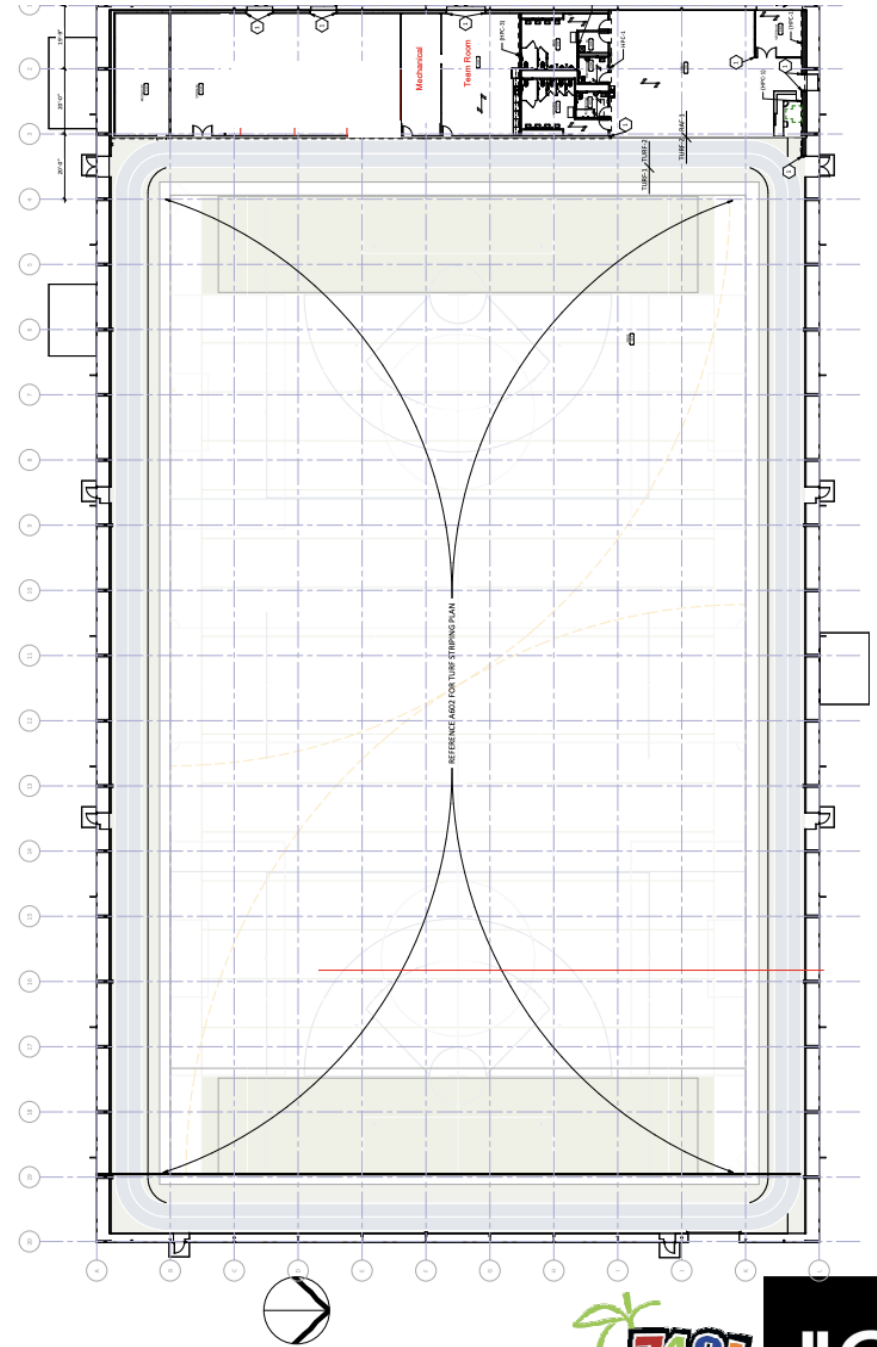


MULTI-PURPOSE/ STORM SHELTER

Synthetic Floor
 PE, Adaptive Athletics, tennis practice/performance
 Basketball practice, Pickleball, Dance

COMMUNITY INDOOR ACTIVITIES

Turf
 PE, Soccer, Football, Softball, Baseball, Lacrosse, Walking, Golf

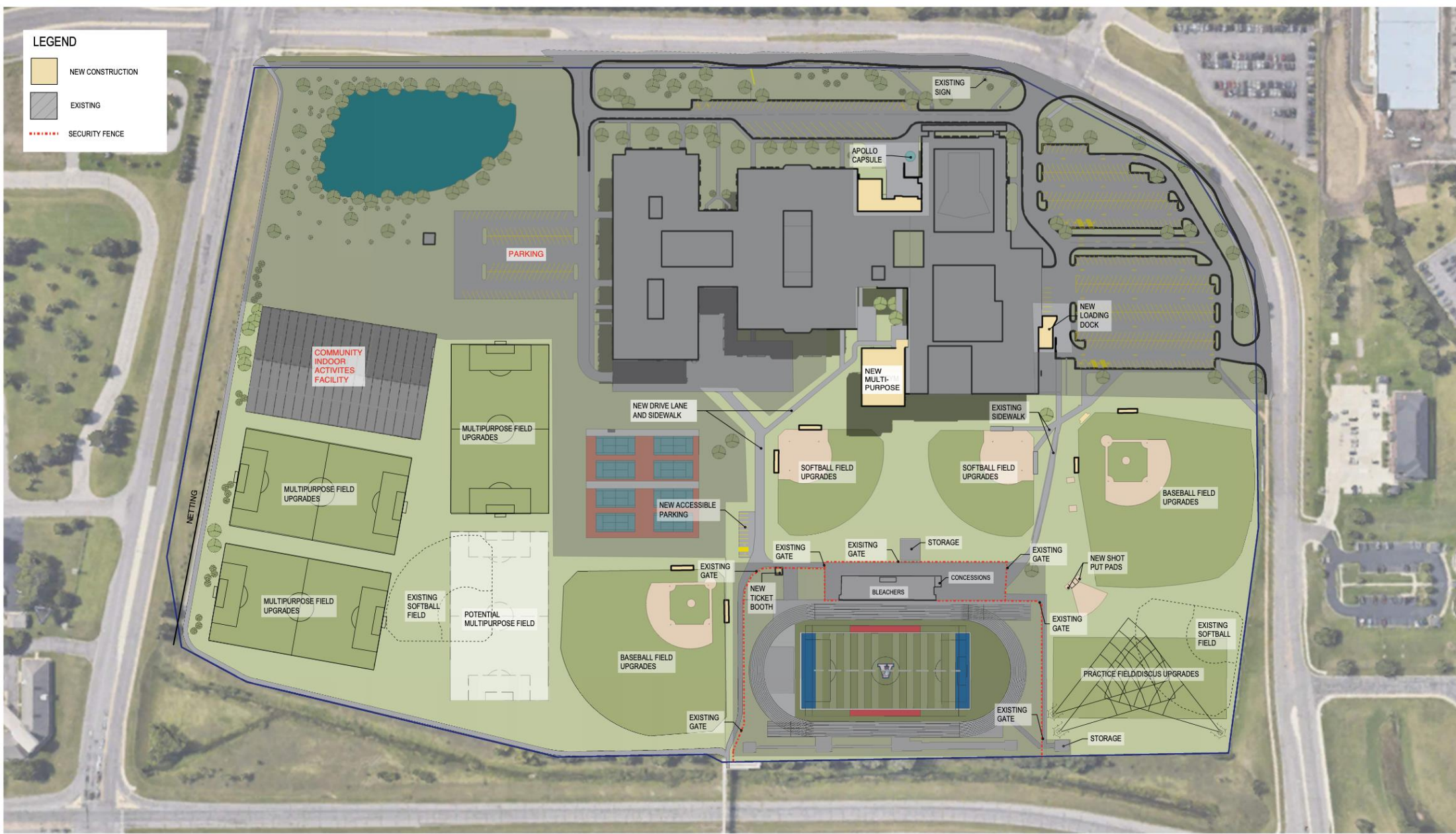


APOLLO HIGH SCHOOL IMPROVEMENTS

ACTIVITIES SPACES AND POTENTIAL USES

10/22/24 | JLG 19230 | © 2024 JLG ARCHITECTS





APOLLO HIGH SCHOOL IMPROVEMENTS

SITE PLAN WITH 742 MULTI-PURPOSE CENTER CONCEPT



Question 1

Provide necessary updates to Apollo High School including a controlled entrance and flexible learning spaces, totaling \$50M.

Question 2

Build an ISD742 Multipurpose Facility on the Apollo grounds to host a variety of physical activities, totaling \$15M.

Total for both Q1 and Q2 = \$65M.



Apollo
Facilities
Referendum

**Tax Impact Commencing
Taxes Payable 2026 / Fiscal Year 2027**

\$50M Question #1	\$15M Question #2	\$65M - Q1+ Q2
------------------------------	------------------------------	-----------------------

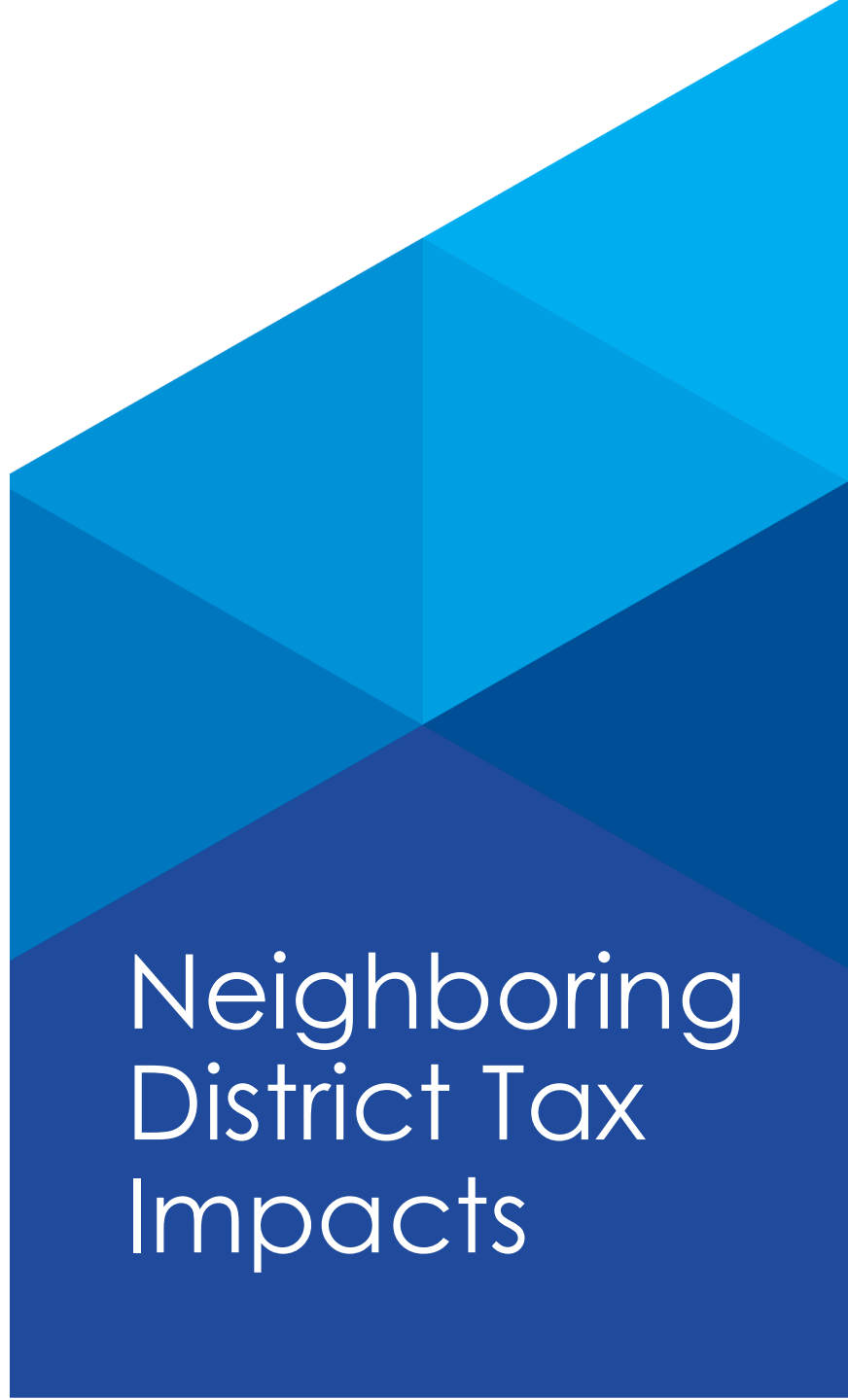
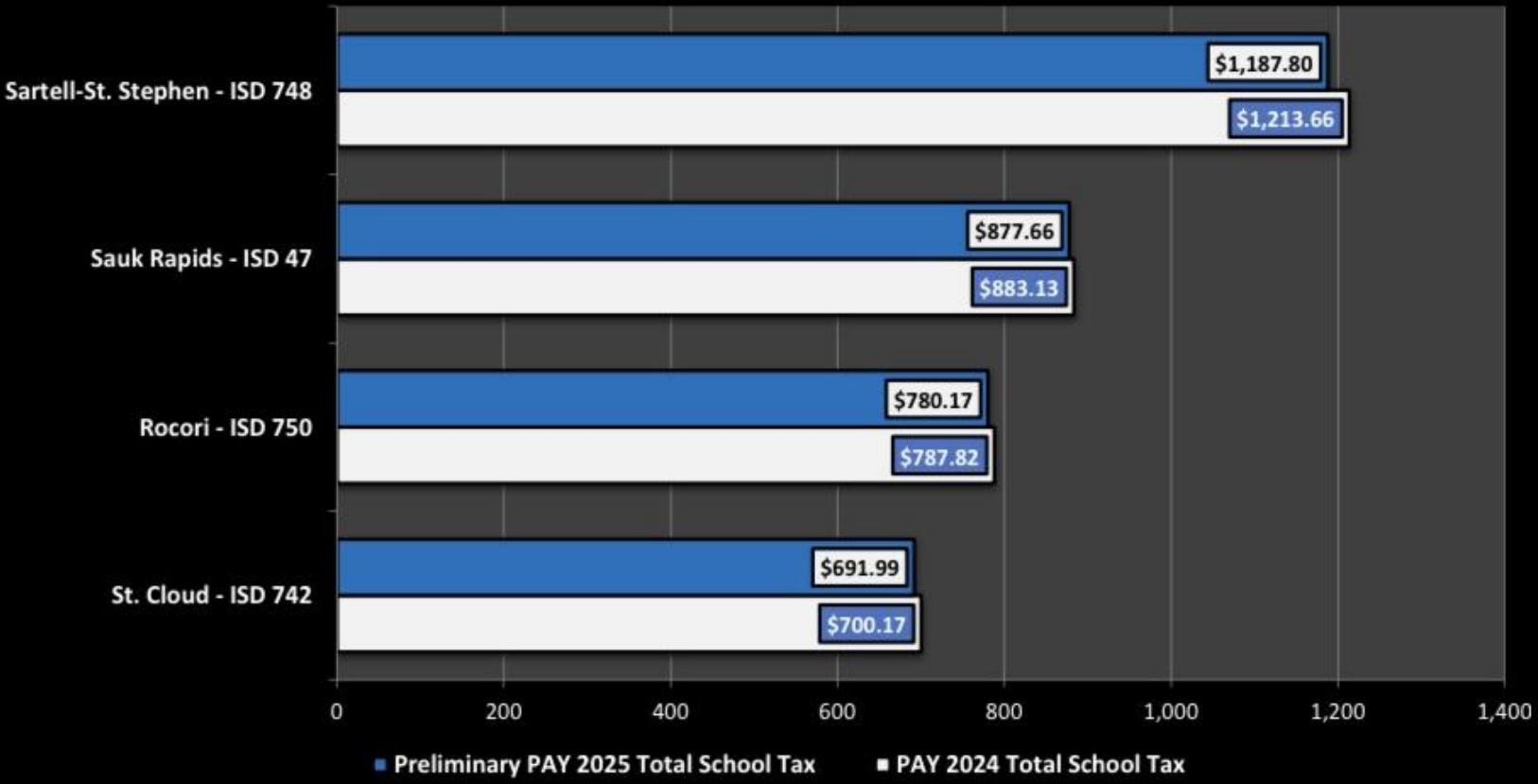
Type of Property	Estimated Market Value
Residential Homestead	100,000
	150,000
	200,000
	250,000
	300,000
	400,000
	500,000
Commercial/ Industrial	250,000
	500,000
	1,000,000
Ag Homestead* (average value per acre)	4,000
	5,000
	6,000
Ag Non-Homestead** (average value per acre)	4,000
	5,000
	6,000

\$65 Million Borrowing / Project		
Est. Annual Tax Impact	Est. Annual Tax Impact	Est. Annual Tax Impact
8.01	3.04	11.05
14.99	5.70	20.69
21.97	8.35	30.33
28.95	11.01	39.96
35.94	13.67	49.60
49.90	18.98	68.87
63.86	24.29	88.15
54.45	20.70	75.15
118.50	45.06	163.57
246.61	93.78	340.39
0.08	0.03	0.11
0.10	0.04	0.13
0.12	0.04	0.16
0.15	0.06	0.21
0.19	0.07	0.27
0.23	0.09	0.32



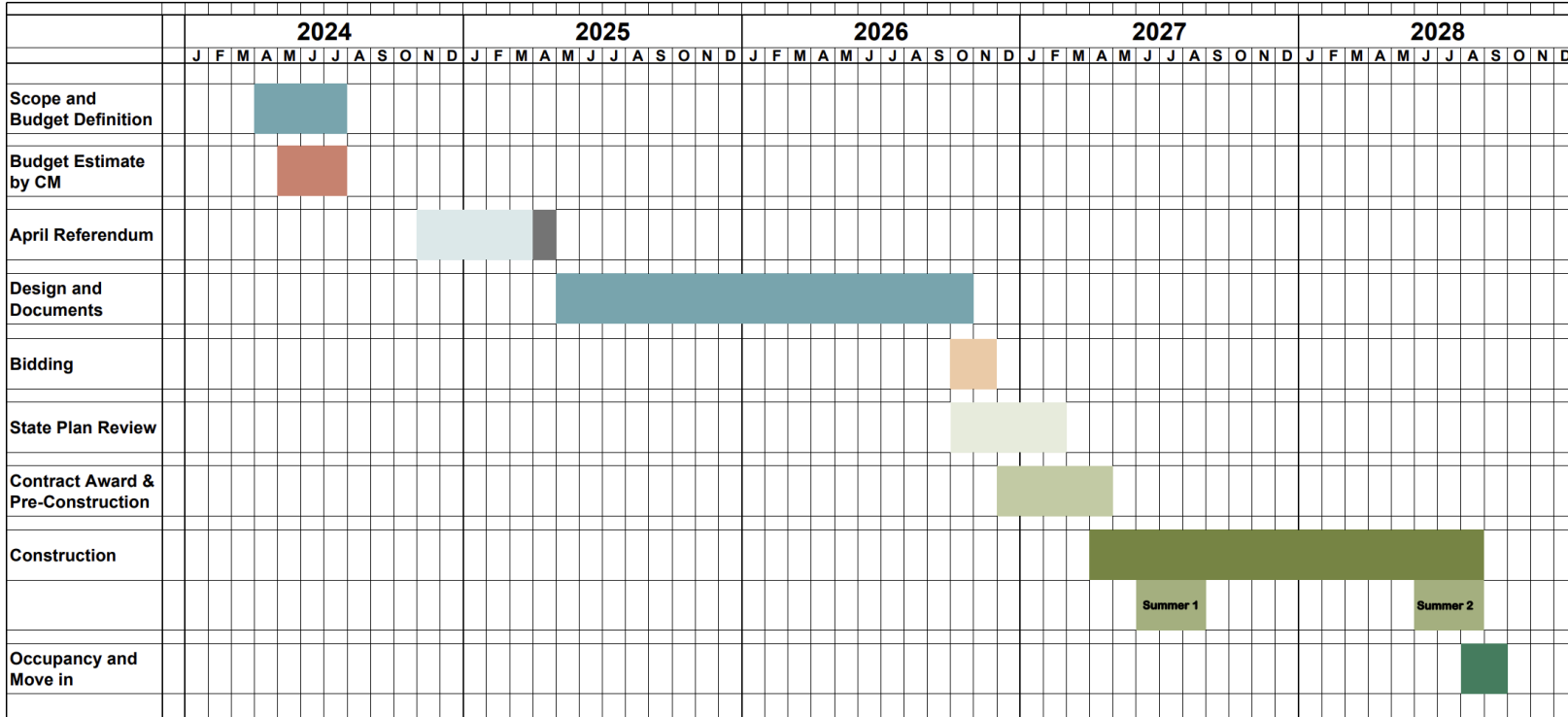
Annual Tax
Impact for a
\$250k
home =
\$39.96

Actual Pay 2024 and Preliminary Pay 2025 Comparison of School Portion of Taxes Paid on \$250,000 Home - Figures below do not include reductions for disparity aid



Neighboring District Tax Impacts

Apollo Project Schedule



Election Date

Administration recommends April 8 as the election date with a completion date of Summer 2028.

APOLLO HIGH SCHOOL IMPROVEMENTS

April Referendum Schedule

09/04/24 | JLG 19230 | © 2024 JLG ARCHITECTS 'S



Thank You!

St. Cloud Area
School District

