

Learning Community

SAC Report

April 2026

Pisigilugit Qitungavut

(In the best interest of our children)

At Kiita, students are re-engaging, earning credits, and reconnecting to school and community. Despite seasonal challenges, attendance trends show overall growth, and students are actively participating in meaningful academic and community-based experiences.

Enrollment & Academic Data

Enrollment: 40

ADA: 66.12%

Credits Earned: 70.50

Credits Attempted: 84.25

Average GPA: 2.46

Incomplete Credits: 1.50

S-TERM: .5 Welding; .5 Cosmetology

CO-OP: 3.00 credits

Independent Study: 25.50 credits

Pass Rate: 84%

Attendance (Year-to-Year Comparison)

Month	2024-25	2025-26	Change
Aug	69.0%	78.0%	+9.0%

Sep	68.7%	76.8%	+8.1%
Oct	64.1%	74.5%	+10.4%
Nov	56.5%	67.9%	+11.4%
Dec	57.6%	70.5%	+12.9%
Jan	67.8%	67.7%	-0.1%
Feb	60.4%	63.3%	+2.8%
Mar	66.9%	65.3%	-1.6%

Celebrations

- Kiita Formal (Prom) – March 28
- 3rd Quarter Awards Ceremony – April 2
- TSP Service Project – Students supported community members by shoveling snow and ice

Growth Opportunities

- Continue to improve attendance consistency
- Increase pass rate back above 90%

Family & Community Collaboration

Kiita completed a Needs Assessment and developed a new School Improvement Plan. Community members participated in all seven meetings, strengthening partnerships and shared ownership in alignment with Pisigilugit Qitungavut.

A Kiita Community

Students engaging in leadership, service, and community connection.

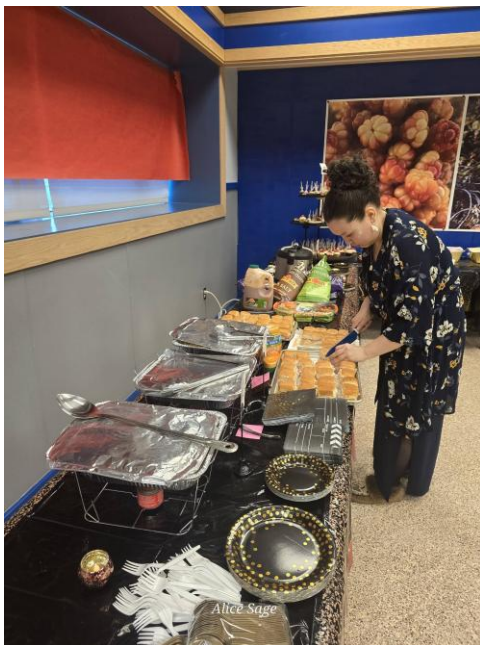
THE FIRST OFFICIAL

Kiita Formal

STUDENTS ARE INVITED TO GET READY WITH THEIR FRIENDS AND TEACHERS AT KIITA PRIOR TO FORMAL, WE WILL HAVE HAIR STYLING AND HAIRCUTS, MAKEUP, AND NAIL SERVICES AVAILABLE.

SATURDAY
MARCH 28 2026

8:00-11:00 PM
Hopson Middle School
Multi-Purpose Room





School & Community Leadership Team (SCLT)
Needs Assessment & Initial School Improvement Plan



All meetings are held in the evening (PM).

Wednesday, January 21, 2026 | 3:30-5:30 PM

Kickoff & Profile Review (Looking Within – Part 1): Establish team roles and norms, review the school improvement process, and begin reviewing student, staff, climate, and facilities data.

Monday, January 26, 2026 | 5:00-7:00 PM

Profile Review (Looking Within – Part 2): Complete analysis of school data, identify strengths and challenges, and finalize Profile Review documentation.

Monday, February 2, 2026 | 5:00-7:00 PM

Practice Review (Looking Within): Review instructional and organizational practices using the Four Domains and identify priority gaps.

Monday, February 9, 2026 | 5:00-7:00 PM

Program Review (Looking Within): Review academic, behavioral, and student support programs to determine effectiveness and needed adjustments.

Monday, February 16, 2026 | 5:00-7:00 PM

Looking Beyond & Bringing It Together: Incorporate community input, synthesize findings, and identify 3-4 priority conclusions.

Monday, February 23, 2026 | 5:00-7:00 PM

Initial School Improvement Plan Development: Develop improvement goals, strategies, success measures, and implementation timelines.

Contact Info: Principal: Shirley Hautala
shirley.hautala@nsbsd.org
907-852-9750

refreshments, child care and transportation available!



Kiita is not a place students fall behind—it is where they re-engage, rebuild, and find their pathway forward.