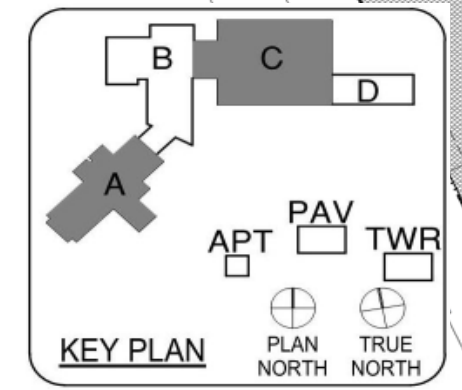
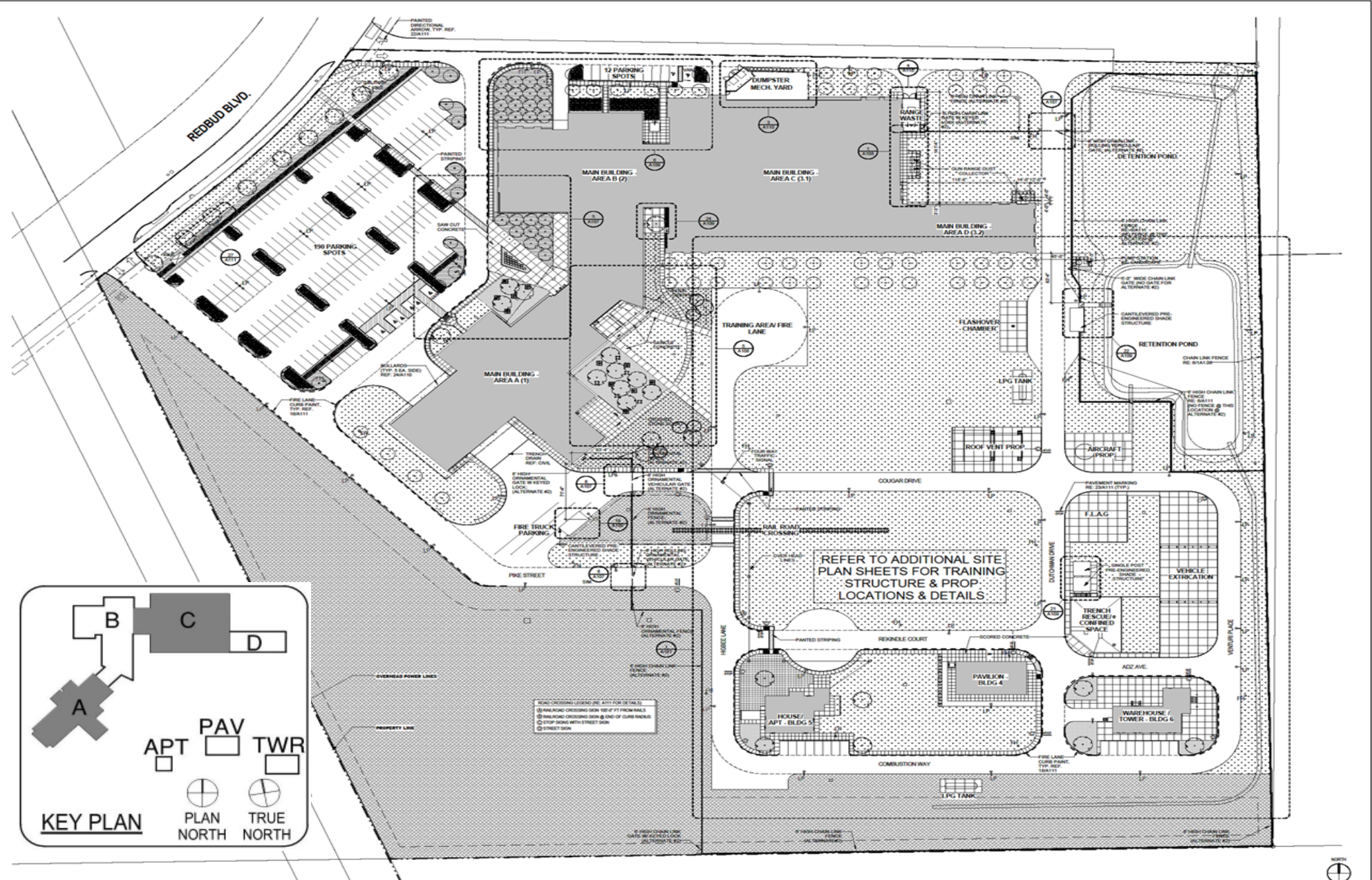


PSTC Construction Update

thru November 2017





Building Aerial – November 30th



Roof Lightweight Concrete in Progress - Fire



Exterior Sheathing, MEP & Interior Wall Framing in Progress - Fire



Brick Veneer in Progress (East & West) - Police



Interior Walls, Door and Frames in Progress- Police



MEP- Police



Interior CMU Progress- Trench Rescue



4th Floor- Burn Tower



CMU in Progress- Pavilion



CMU in Progress- Apartment

