



**Mineola Independent School District  
Long Range Facilities Planning**

# **DISTRICT**

SNAPSHOT

# DISTRICT FACTS

---



4 campuses



1608 students



12 support buildings



220 employees

# DISTRICT FINANCIAL FACTS

---

- **Superior Achievement** from Financial Integrity Rating system of Texas (FIRST Rating) for past 14 years.
- Proposed bonds will be sold with a **AAA bond rating** based on the availability of the state's Permanent School Fund.

# **DISTRICT ACADEMIC FACTS**

---

## **2015-16 STATE ACCOUNTABILITY RATING**

—

**Met Standard**

### **TEA Performance Distinctions in:**

ELA/Reading (HS and MS)

Science (MS)

Top 25% Student Progress (MS)

# DISTRICT FINE ARTS AWARDS

---

## **2016 UIL High School:**

Outstanding Performance Series  
State Finalist  
1<sup>st</sup> Division Marching Award  
UIL Sweepstakes Award



## **2015 UIL High School:**

3A State Marching Contest Bronze Medalist

## **2016 UIL Middle School:**

TMEA Class C State Honor Band  
Outstanding Performance Series State Finalist  
UIL Concert Sight-reading Sweepstakes Award (Division 1)

# 2016 EXTRACURRICULAR AWARDS

- State UIL Cross-X Debate
- State Robotics team
- FFA – Greenhand Chapter
- State Fishing team
- 3<sup>rd</sup> in State Business Professionals of America



# ATHLETIC AWARDS

---

2016 3A Division 1 State Football Champions





# Career and Technical Education (CTE)

---

## Existing Programs:

Construction  
Auto mechanic  
Floral Design  
Hospitality  
Agriculture



## Expansions:

Health Sciences – Phlebotomy and Medical Terminology  
Auto Technology  
Construction and Welding  
Agriculture, Food, and Natural Resources

# **LONG RANGE**

Facilities Planning

# **STRATEGIC PLANNING COMMITTEE**

---

The total committee of 82 diverse community and staff members identified 5 Strategies for Mineola ISD:

- 1. Ensure all students have a safe environment**
2. Ensure a culture of innovation among staff and students
3. Ensure a supportive system that develops exceptional staff
4. Ensure open communication with the community that is timely and relevant
- 5. Ensure that our facilities support a learner-centered environment** (*recommended an facilities audit and committee*)

# FACILITIES COMMITTEE

---

The committee met for 2 months:

1. Campus tours
2. Facilities Audit
3. Financial analysis
4. Project options
5. Prioritizing final project list

# PRIMARY FACILITY 1986

## Appraisal Guide for School Facilities - PRIMARY - COMBINED

Table of Weights and Categories	Maximum Points Allotted	Non-Existent	Very Inadequate 1-29%	Poor 30-49%	Borderline 50-69%	Satisfactory 70-89%	Excellent 90-100%
	5	0	1	2	3	4	5
10	0	2	4	6	8	10	
15	0	3	6	9	12	15	
20	0	4	8	12	16	20	
25	0	5	10	15	20	25	

Appraisal Summary	SECTION	POSSIBLE POINTS	TOTAL EARNED	PERCENT	RATING BY CATEGORY
	1.0 The School Site	100	59	59%	Borderline
	2.0 Structural and Mechanical	200	124	62%	Borderline
	3.0 Plant Maintainability	100	47	47%	Poor
	4.0 School Building Safety & Security	200	112	56%	Borderline
	5.0 Educational Adequacy	200	112	56%	Borderline
	6.0 Environment for Education	200	142	71%	Satisfactory
	<b>TOTAL</b>	<b>1000</b>	<b>596</b>	<b>59%</b>	<b>Borderline</b>



# MIDDLE SCHOOL FACILITY 1986

## Appraisal Guide for School Facilities - MIDDLE SCHOOL - COMBINED

Table of Weights and Categories	Maximum Points Allotted	Non-Existent	Very Inadequate 1-29%	Poor 30-49%	Borderline 50-69%	Satisfactory 70-89%	Excellent 90-100%
	5	0	1	2	3	4	5
10	0	2	4	6	8	10	
15	0	3	6	9	12	15	
20	0	4	8	12	16	20	
25	0	5	10	15	20	25	

Appraisal Summary	SECTION	POSSIBLE POINTS	TOTAL EARNED	PERCENT	RATING BY CATEGORY
	1.0 The School Site	100	59	59%	Borderline
	2.0 Structural and Mechanical	200	124	62%	Borderline
	3.0 Plant Maintainability	100	47	47%	Poor
	4.0 School Building Safety & Security	200	112	56%	Borderline
	5.0 Educational Adequacy	200	112	56%	Borderline
	6.0 Environment for Education	200	142	71%	Satisfactory
	<b>TOTAL</b>	<b>1000</b>	<b>596</b>	<b>59%</b>	<b>Borderline</b>



# HIGH SCHOOL FACILITY 1967

## Appraisal Guide for School Facilities- HIGH SCHOOL - COMBINED

Table of Weights and Categories	Maximum Points Allotted	Non-Existent	Very Inadequate 1-29%	Poor 30-49%	Borderline 50-69%	Satisfactory 70-89%	Excellent 90-100%
	5	0	1	2	3	4	5
10	0	2	4	6	8	10	
15	0	3	6	9	12	15	
20	0	4	8	12	16	20	
25	0	5	10	15	20	25	

Appraisal Summary	SECTION	POSSIBLE POINTS	TOTAL EARNED	PERCENT	RATING BY CATEGORY
	1.0 The School Site	100	45	45%	Poor
	2.0 Structural and Mechanical	200	116	58%	Borderline
	3.0 Plant Maintainability	100	43	43%	Poor
	4.0 School Building Safety & Security	200	91	46%	Poor
	5.0 Educational Adequacy	200	89	45%	Poor
	6.0 Environment for Education	200	129	65%	Borderline
	<b>TOTAL</b>	<b>1000</b>	<b>513</b>	<b>51%</b>	<b>Borderline</b>



# ELEMENTARY FACILITY 1967

## Appraisal Guide for School Facilities - ELEMENTARY - COMBINED

Table of Weights and Categories	Maximum Points Allotted	Non-Existent	Very Inadequate 1-29%	Poor 30-49%	Borderline 50-69%	Satisfactory 70-89%	Excellent 90-100%
	5	0	1	2	3	4	5
10	0	2	4	6	8	10	
15	0	3	6	9	12	15	
20	0	4	8	12	16	20	
25	0	5	10	15	20	25	

Appraisal Summary	SECTION	POSSIBLE POINTS	TOTAL EARNED	PERCENT	RATING BY CATEGORY
	1.0 The School Site	100	41	41%	Poor
	2.0 Structural and Mechanical	200	113	57%	Borderline
	3.0 Plant Maintainability	100	44	44%	Poor
	4.0 School Building Safety & Security	200	80	40%	Poor
	5.0 Educational Adequacy	200	97	49%	Poor
	6.0 Environment for Education	200	111	56%	Borderline
	<b>TOTAL</b>	<b>1000</b>	<b>486</b>	<b>49%</b>	<b>Poor</b>





# CRITICAL NEEDS

---

## SAFETY + SECURITY ACROSS THE DISTRICT

NEW HIGH SCHOOL

UPGRADE EXISTING CAMPUSES

- PRIMARY
- ELEMENTARY
- MIDDLE SCHOOL

NEW PAC – PERFORMING ARTS CENTER

NEW CTE – CAREER AND TECHNOLOGY EDUCATION

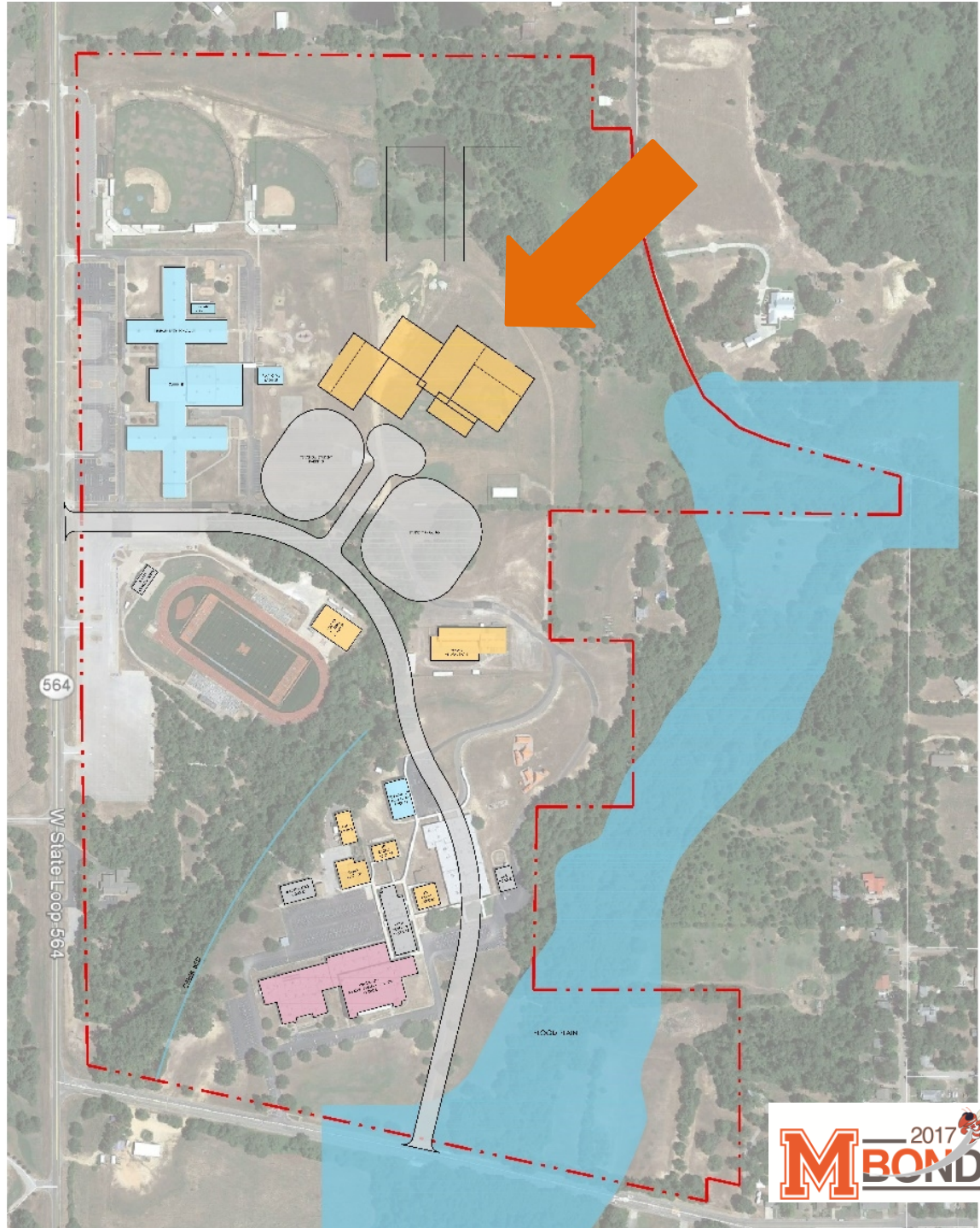
# MINEOLA ISD LONG RANGE PLAN

PHASE	PROJECTS	TARGETED COMPLETION DATE
Phase 1:	Construction of new High School with initial CTE Facility and Performing Arts Center	Fall 2019
	Initial road construction for access to new High School from Loop 564	
Phase 2:	Remodel and update current High School to relocate Middle School	Fall 2020
Phase 3:	Remodel and update current Middle School and Primary School to house students PK-5	Fall 2021
Phase 4:	Removal of Elementary School building and buildings around old High School	Fall 2022
	Completion of road extension out to Patten Street	
Phase 5:	Expansion of Performing Arts Center and CTE Facility	

# MINEOLA ISD LONG RANGE PLAN

## Phase 1

New HS  
New CTE  
New PAC  
New Road (partial)



**BOND**  
ELECTION & PLANNING

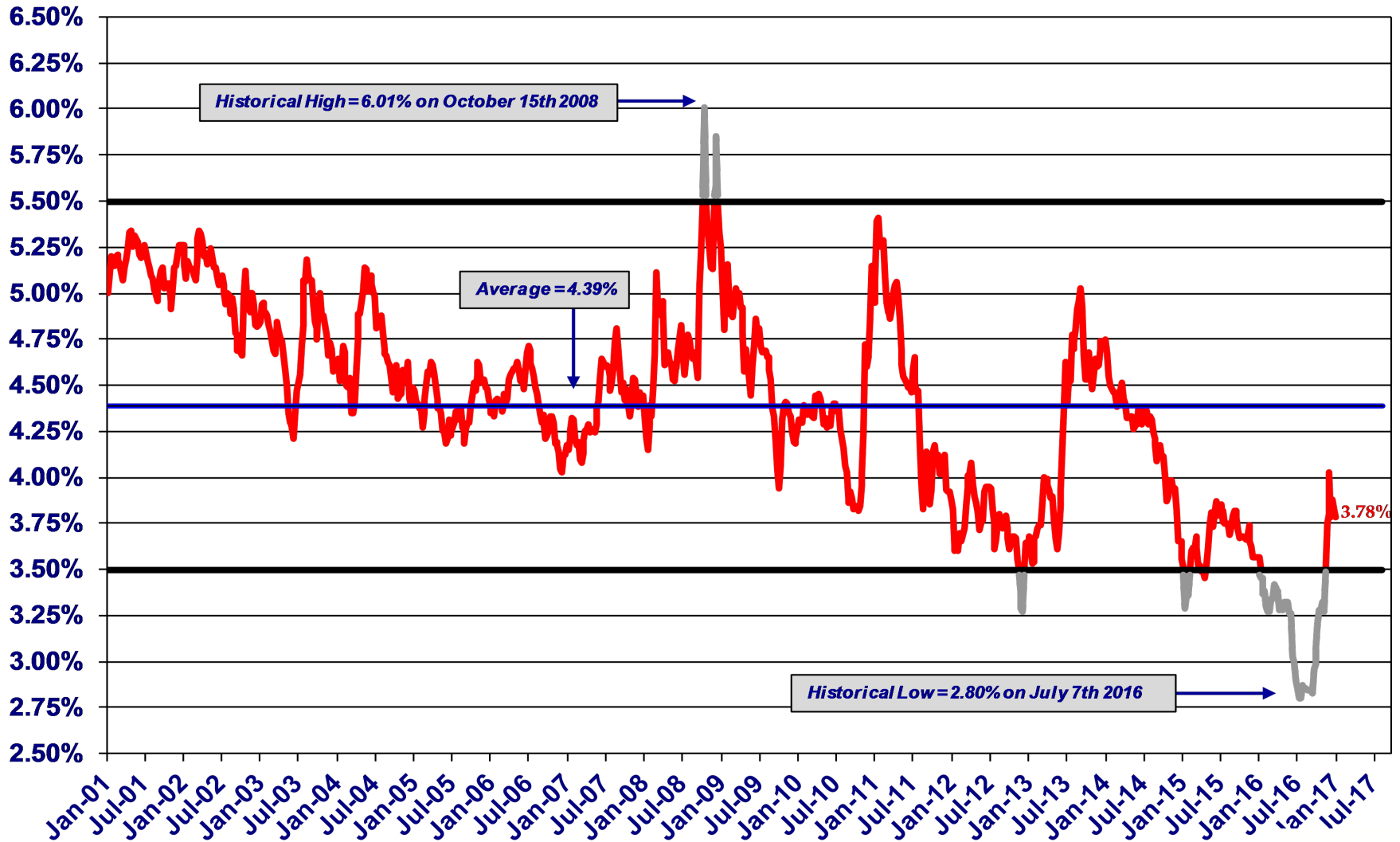
# WHAT IS A BOND ELECTION?

---

- A bond election is how most Texas public schools fund construction and facility improvement projects.
- School districts borrow money in the form of bonds to finance design, construction, renovation, and expansion of facilities.
- This is similar to homeowners borrowing money in the form of a mortgage to finance a home.
- Bonds are approved by voters in a bond election, then sold to investors to raise money to pay for the projects.

# BOND BUYERS INDEX OF MUNICIPAL BONDS

January 2001 - January 2017



# 2017 BOND PROPOSAL

---

COMPONENTS	ESTIMATED COST
New High School Core Facilities	\$27,000,000
Career and Technology Education (CTE)	\$5,000,000
Performing Arts Center (PAC)	\$8,300,000
Road Construction (partial)	\$700,000
<b>TOTAL</b>	<b>\$41,000,000</b>

**TAX**  
IMPACT



# CURRENT MISD TAX RATE

---

## MAINTENANCE & OPERATIONS (M&O)

Salaries, utilities,  
supplies, etc.

**\$1.17**

+

## INTEREST & SINKING (I&S)

New construction,  
renovations,  
expansion, etc.

**\$0.00**

=

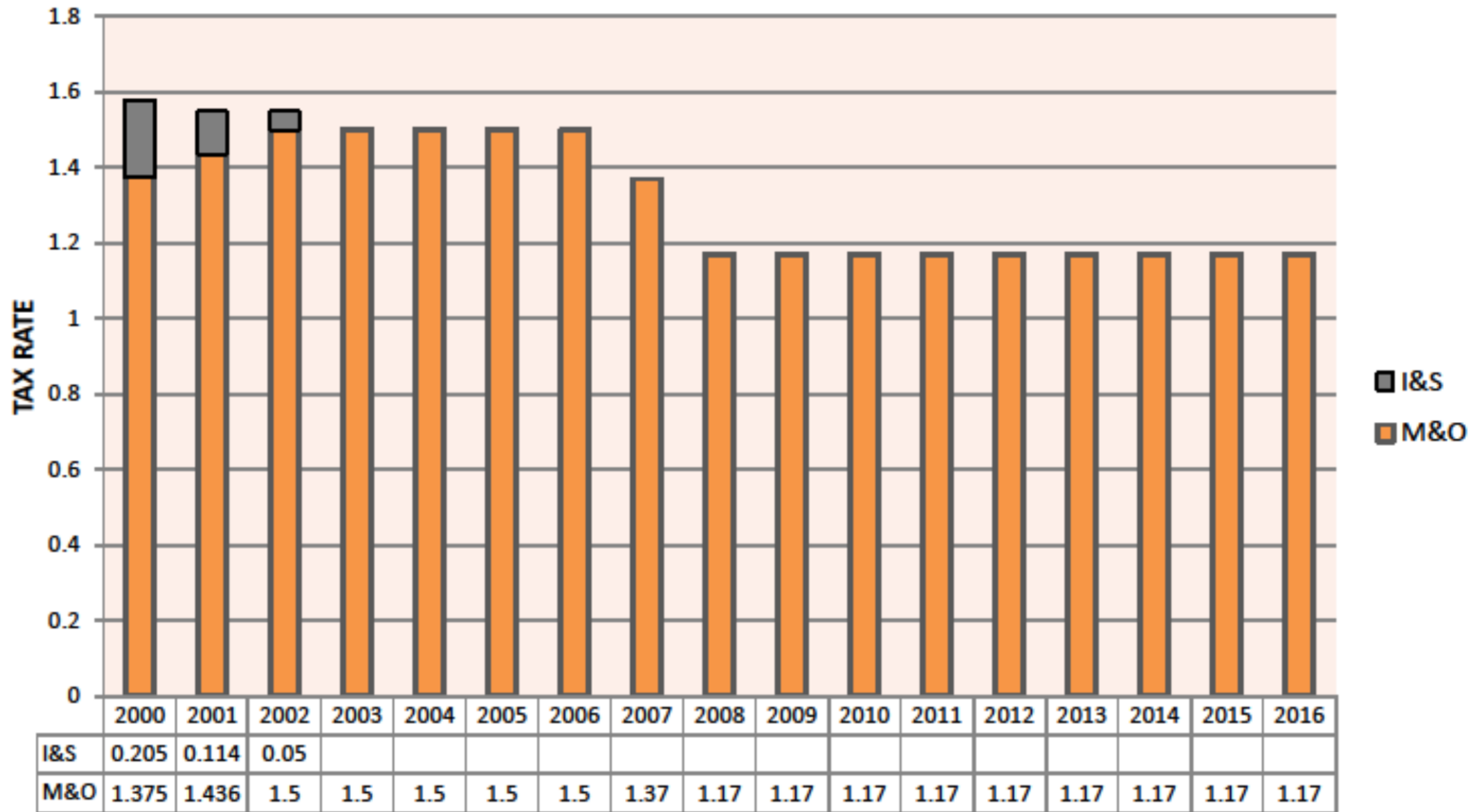
**MISD total  
tax rate:**

**\$1.17**

**No I&S debt  
since 2002 -  
14 years**

**10<sup>th</sup> Year at  
Same Tax Rate**

### Mineola ISD - Tax Rate History 2000-2016



# TAX RATE COMPARISON

## 2016/2017 Comparison

(1)	(2)	(3)	(4)
<b>School District</b>	<b>M&amp;O</b>	<b>I&amp;S</b>	<b>Total</b>
Bullard ISD	\$1.17000	\$0.50000	\$1.67000
Spring Hill ISD	\$1.17000	\$0.50000	\$1.67000
Van ISD	\$1.17000	\$0.39140	\$1.56140
Commerce ISD	\$1.17000	\$0.37360	\$1.54360
Winona ISD	\$1.04000	\$0.44514	\$1.48514
Quitman ISD	\$1.17000	\$0.26500	\$1.43500
Lindale ISD	\$1.08000	\$0.32000	\$1.40000
Farmersville	\$1.17000	\$0.22000	\$1.39000
Grand Saline ISD	\$1.17000	\$0.21000	\$1.38000
Hawkins ISD	\$1.04000	\$0.30000	\$1.34000
Big Sandy ISD	\$1.04000	\$0.25290	\$1.29290
Mount Vernon	\$1.04010	\$0.22880	\$1.26890
Alba-Golden ISD	\$1.17000	\$0.06000	\$1.23000
Winnsboro ISD	\$1.17000	\$0.00000	\$1.17000
Fruitvale ISD	\$1.17000	\$0.00000	\$1.17000
<b>Mineola ISD</b>	<b>\$1.17000</b>	<b>\$0.00000</b>	<b>\$1.17000</b>
Harmony ISD	\$1.04000	\$0.07240	\$1.11240

# TAX IMPACT

---



**\$84,459**

Average MISD homestead  
value per Wood County  
Appraisal District

=



**\$35.19 / month**

Average Home Value  
\$109,459 less \$25,000  
state homestead  
exemption

# TAX INFO FOR SENIOR CITIZENS

---



Property taxes for citizens 65 years and older are not affected over the frozen amount, if the appropriate homestead exemptions are filed and approved by the County Appraisal District and no significant improvements have been made to the homestead.

# VOTING INFORMATION

---

Early voting times and location:

**April 24 – May 2**

**MISD Administration Building**

**8:00 a.m. – 8:00 p.m.**

Election Day location:

**May 6, 2017**

**Mineola City Hall**

**7:00 a.m. – 7:00 p.m.**

# **Community Forums / Tours**

---

Mineola High School  
**6:30 p.m.**

**March 7**

**March 21**

**April 3**

**April 20**

# QUESTIONS?

---

Thank you!



# LONG RANGE PLAN TIMELINE

