



Charter Renewal Presentation

Arkansas Board of Education

December 13, 2022

Agenda

- Overview of eStem Public Charter Schools
- Academics and Student Achievement
- Innovative Approaches to Learning and Impact on Education
- Moving eStem Forward



eStem Public Charter School



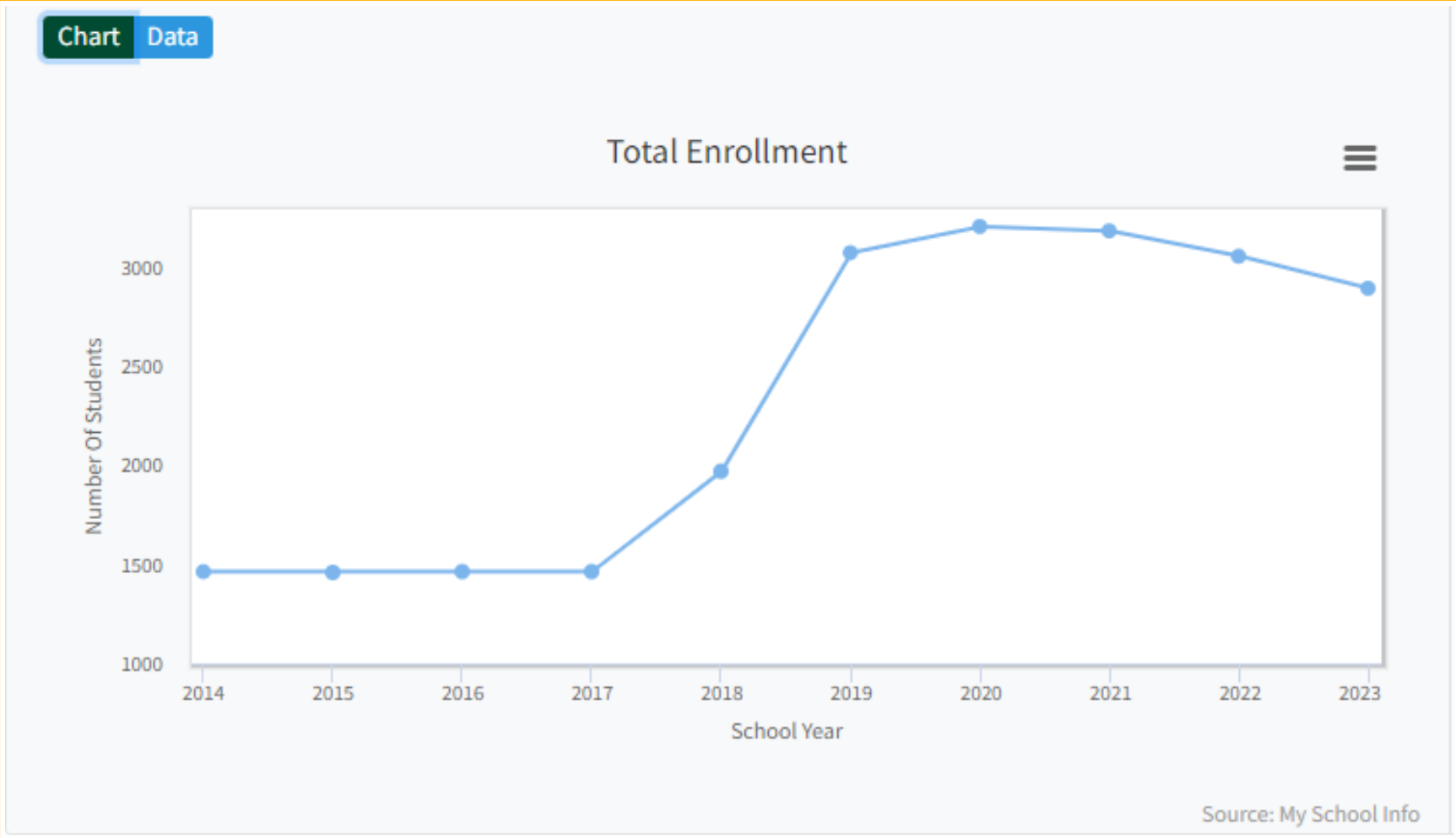
Enrollment History

- eStem Public Charter School, located in Little Rock, Arkansas, is an open enrollment public charter school founded in 2008
- eStem currently serves just under 2,900 students in grades K-12 across five schools on three campuses:
 - eStem Downtown ES and Junior HS
 - eStem East Village ES and Junior HS
 - eStem High School

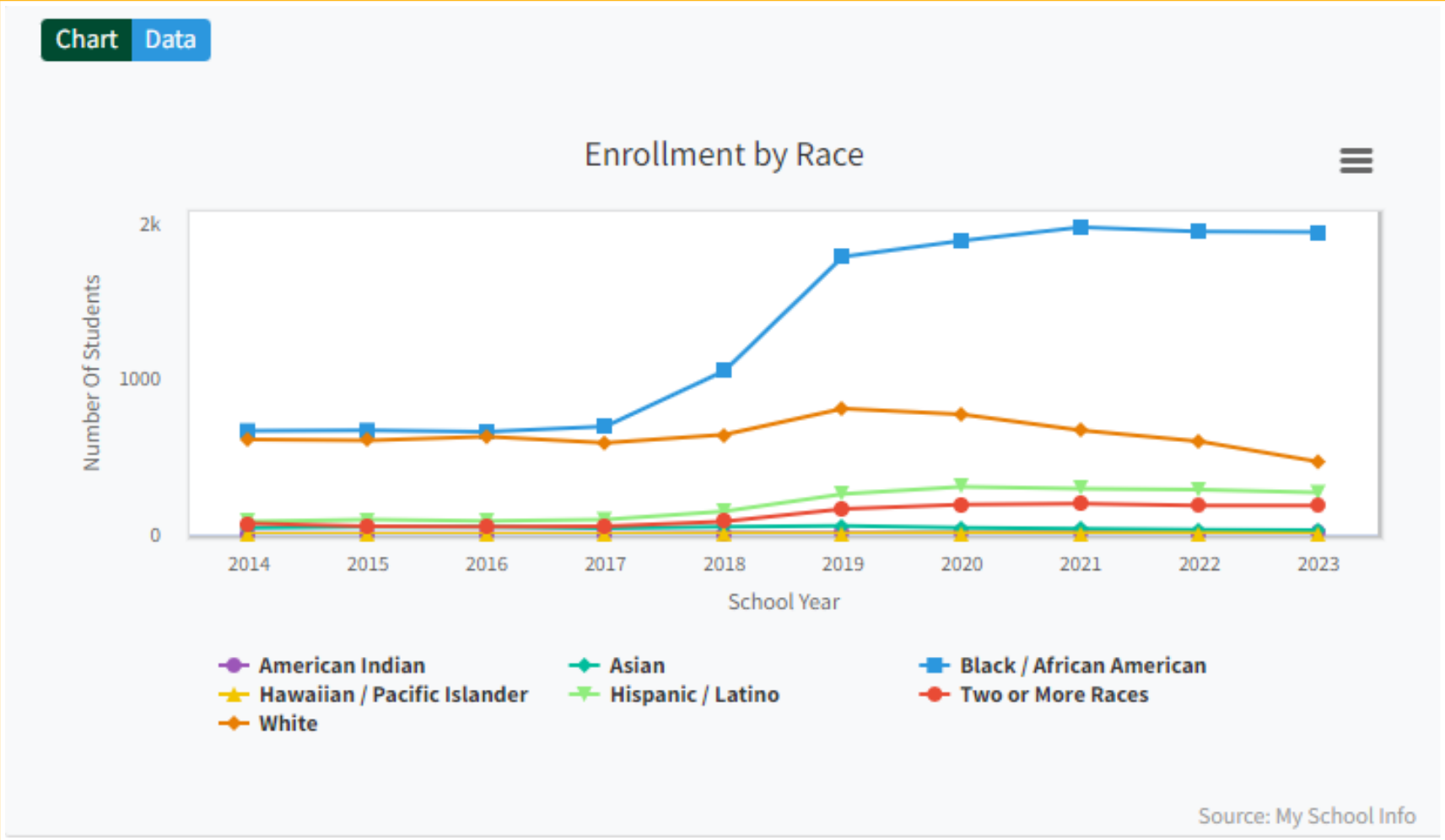
Campus	School	Address	Grades Served	Enrollment FY22	Maximum Capacity
1	eStem Downtown ES	112 W 3rd Street	K-6	944	990
	eStem Downtown Junior HS	123 W 3rd Street	7-9	481	525
2	eStem East Village ES	410 Shall Ave	K-6	798	860
	eStem East Village Junior HS	400 Shall Ave	7-9	330	450
3	eStem HS	2801 S University Ave	10-12	504	1,019



Enrollment History



Enrollment History



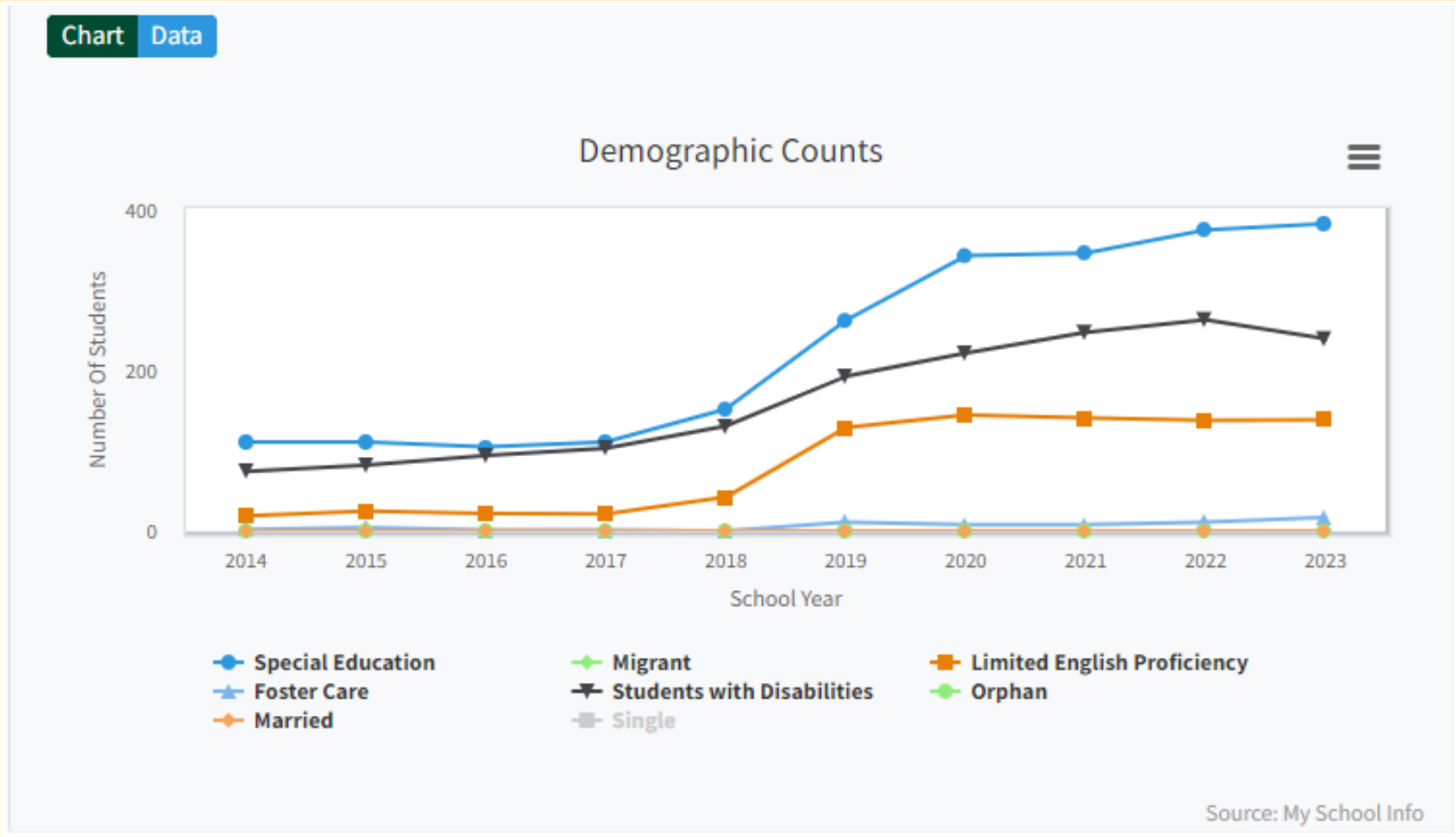


2021-2022 Racial Demographic Comparison

	White Population	Black Population	Other Population
eStem Public Charter Schools	19.6%	63.8%	16.6%
City of Little Rock	49.9%	40.9%	9.2%
Pulaski County	56.5%	38.3%	5.2%
	White Population	Black Population	Other Population
eStem Public Charter Schools	19.6%	63.8%	16.6%
Lighthouse Academies (Jacksonville)	14.3%	76.5%	9.2%
Lisa Academy	21.3%	41.7%	37%
Little Rock School District	19.6%	60%	20.4%
North Little Rock School District	25.8%	57.1%	17.1%
Pulaski County Special School District	38.6%	44.4%	17%

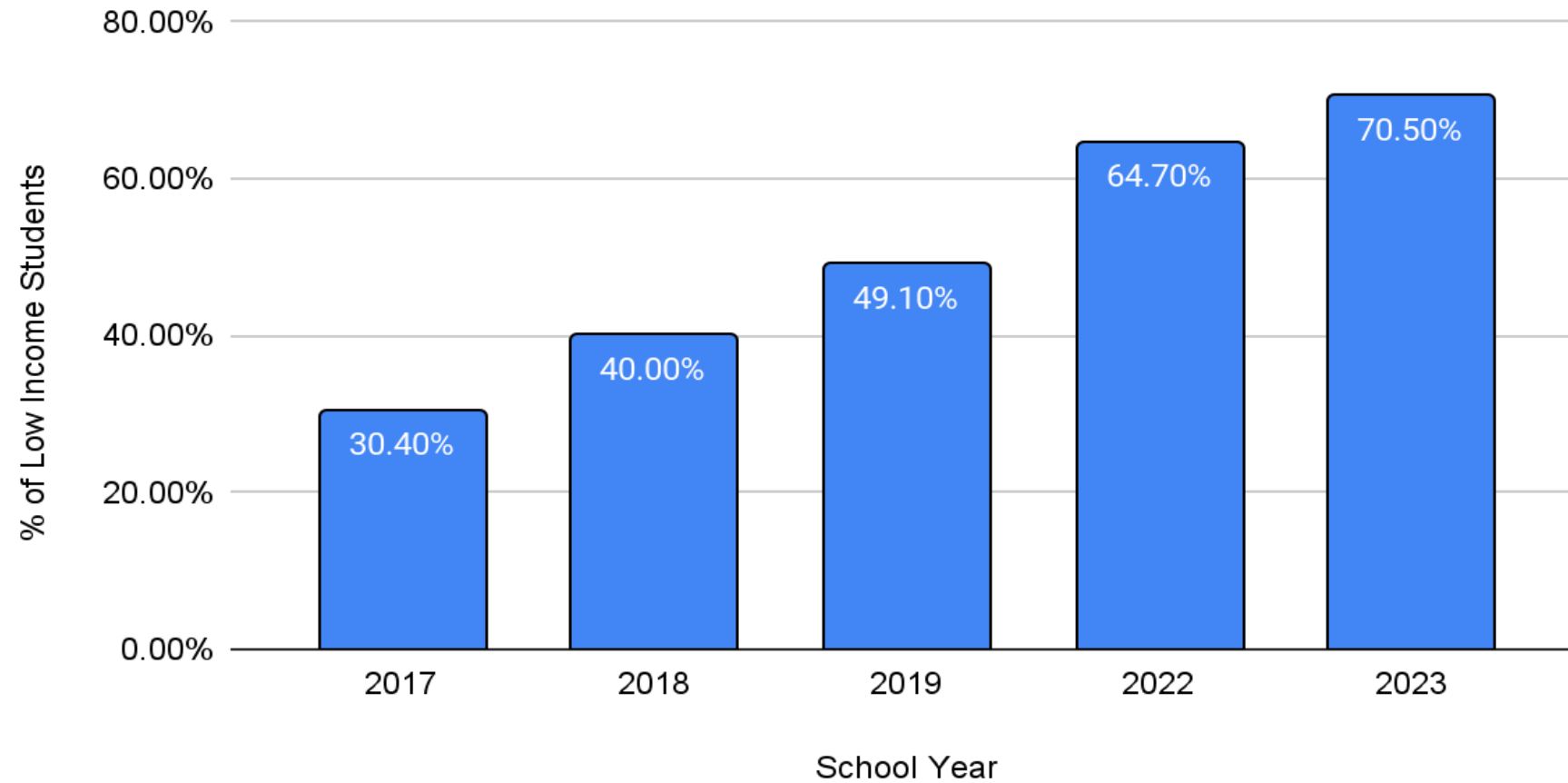
Sources: Myschoolinfo.gov and Census.gov

Enrollment History



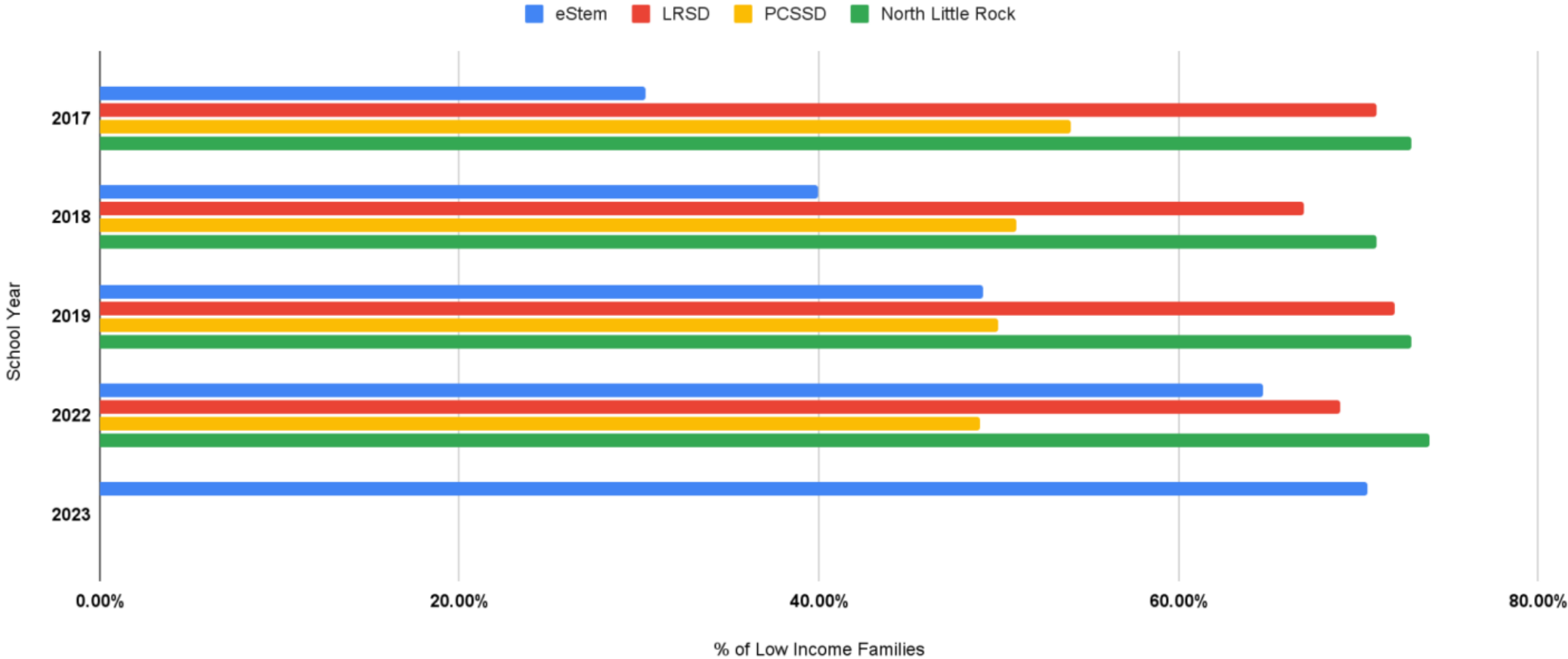
Student Demographics

Percentage of Low Income Students at eStem Over Time



Student Demographics

Percent of Low Income Families by District Over Time

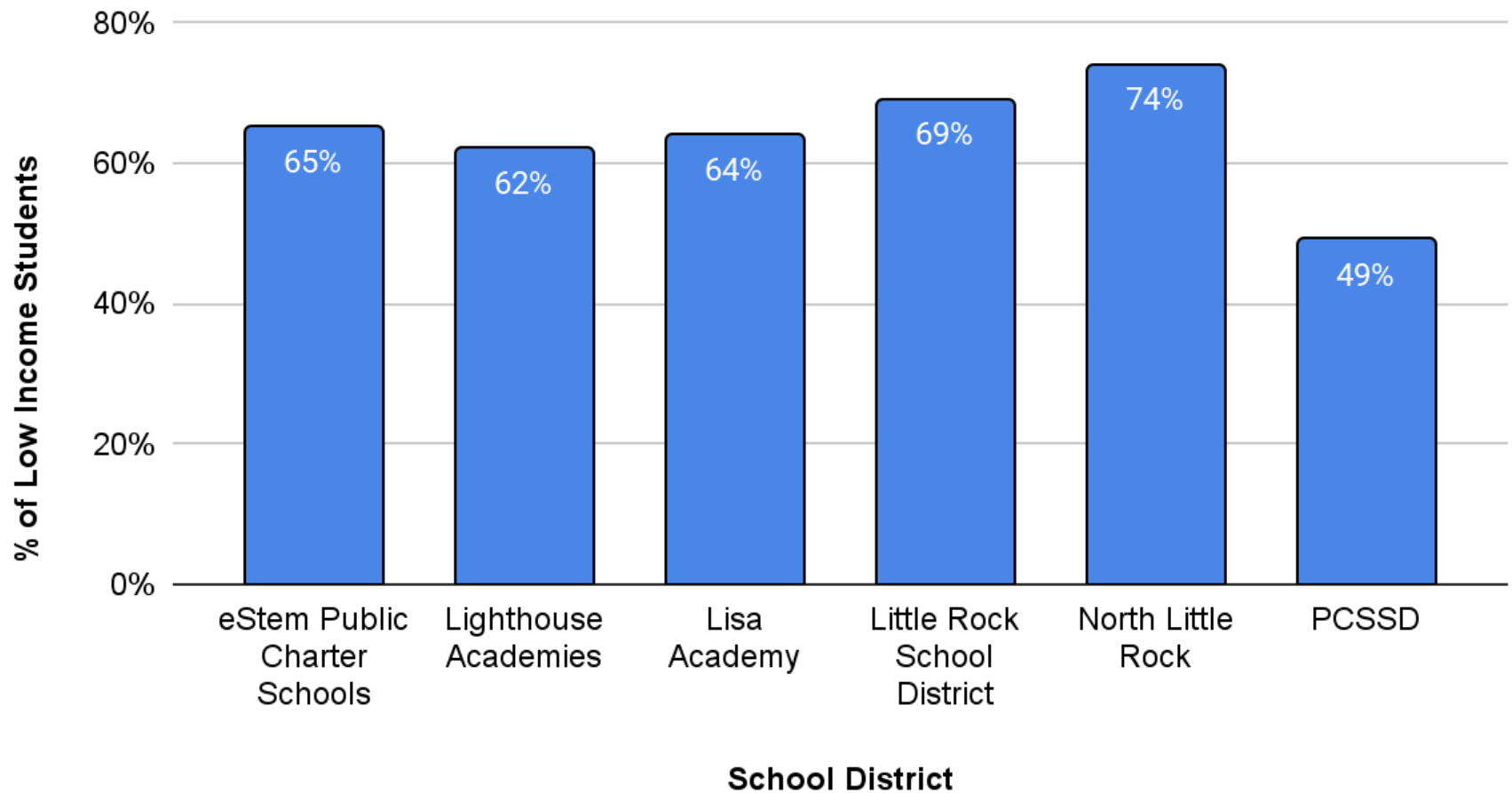


Source: MySchoolInfo.arkansas.gov



Student Demographics

% of Low Income Students by District (SY 21-22)



Source: MySchoolInfo.arkansas.gov



Student Retention

School	FY19	FY20	FY21
eStem Downtown Elementary	76.2%	88.3%	88.1%
eStem Downtown Junior HS	84.3%	82.2%	81.1%
eStem East Village Elementary	-	89.2%	92.2%
eStem East Village Junior HS	-	87.3%	82.5%
eStem High School	89.1%	87.4%	82.3%
Network Retention	91.5%	87.2%	85.8%

- Student retention over the last three years has remained above the 85% target threshold, but has varied year-to-year and by school
- eStem experienced fluctuations in student enrollment during COVID, as family preferences for fully remote solutions also varied



Student Retention

eStem has a full-time employee at the CMO dedicated to retention and recruitment efforts.



Outreach and Recruitment Strategies

1. Parent word of mouth/ Parent referrals
2. Orientations and information sessions for new and prospective parents about academic model with a big emphasis on quality school choice
3. Building relationships with local businesses, nonprofits, faith-based organizations, and community development organizations
4. Digital Marketing & Branding
5. Social media - Increased presence on Instagram, Facebook, Twitter, and the local media
6. Flyers and posters at local businesses, community organizations, social service providers, faith-based organizations, grocery stores, and public libraries



eStem HIGH SCHOOL

Academics and Student Achievement



ESSA Overall Index Scores

SCHOOL	2017-2018	2018-2019	2019-2020	2020-2021	2021 - 2022
eStem Elementary	72.48	68.77	N/A	60.41	63.60
eStem Junior High	71.52	67.79	N/A	64.40	69.55
East Village Elementary	N/A	67.01	N/A	59.61	61.52
East Village Junior High	N/A	63.99	N/A	62.01	69.75
eStem High School	68.88	70.96	N/A	64.68	67.04



Addressing Elementary Learning Loss



Human Capital & Professional Development

- Executive Director of Elementary Schools
- Reading Interventionists
- Instructional Facilitators Master Classes
- Adoption of PLC model with PD through Solution Tree
- Collaboration with DESE Math Specialists
- Collaboration with APSRC for Domains 2 & 3 for selected teachers

Curriculum and Instruction

- Master schedule development aimed at maximizing instructional time
- Implementation & monitoring
 - Common Formative Assessments
 - Pacing Guides/Curriculum Maps
 - Data Trackers
- Full Implementation of Small Group Instruction
- Science of Reading Proficiency Observations
- Common Planning Time for Core Teachers



Intervention and Enrichment

- Summer School
- Ignite Afterschool Program
- Built-in daily intervention

Addressing Secondary Learning Loss



Intervention and Enrichment

- Summer School
- Weekly Content Labs
- Afterschool Programs
- Lexia English for ESOL students
- Reading is Lit

Human Capital & Professional Development

- Instructional Facilitators Master Classes
- Adoption of PLC model with PD through Solution Tree

Curriculum and Instruction

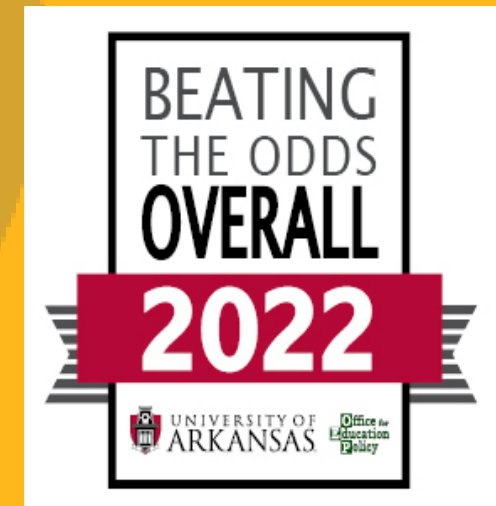
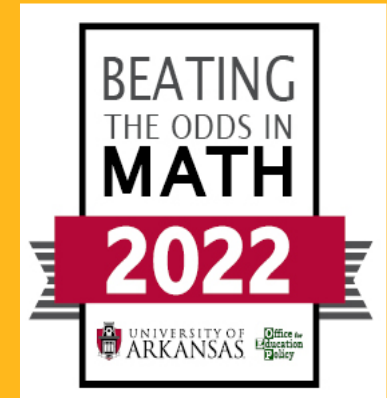
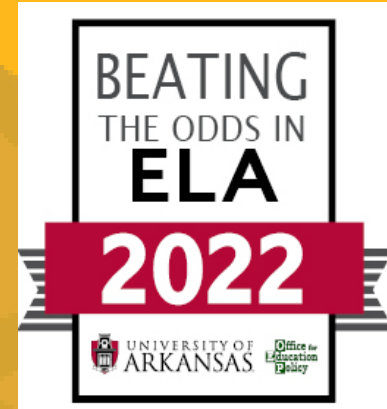
- Master schedule development aimed at maximizing instructional time
 - Double blocked math/reading
 - Implementation of math/reading labs
- Implementation & monitoring
 - Common Formative Assessments (Grades 7-9)
 - Pacing Guides/Curriculum Maps
- Common Planning Time for Core Teachers
- Aligned curriculum (literacy & math) through Savvas/Illustrative Mathematics

ESSA Value-Added Growth

SCHOOL	2017-2018	2018-2019	2019-2020	2020-2021	2021 - 2022
eStem Elementary	79.22	78.09	N/A	76.05	80.31
eStem Junior High	82.44	79.42	N/A	80.80	84.50
East Village Elementary	N/A	78.62	N/A	75.93	78.09
East Village Junior High	N/A	80.79	N/A	80.77	86.14
eStem High School	81.21	82.34	N/A	82.81	83.09



Academic Success



2022 Pulaski County District/Charter School ACT Aspire Performance

DISTRICT	F/RL %	Black %	ELA % Ready/Exceeding	Math % Ready/Exceeding
eStem Charter	65	60	38.20	32.69
Little Rock School District	69	63.80	29.26	25.11
North Little Rock School District	74	57.10	28.35	23.62
Pulaski County Special School District	49	44.40	36.45	35.44
Jacksonville Lighthouse Charter	62	76.50	23.38	18.70
LISA Academy Charter	64	41.70	39.95	40.70



Academic Success

Since 2008, eStem Schools have demonstrated a track record of strong academic performance for K-12 students in Little Rock. Key notable recent highlights include:

eStem schools are regularly recognized by the state through the **Reward Schools** program.

- 2022 - **EHS** Top 5% Growth/Graduation Rate (\$50,500), **EVJH** Top 5% Growth (\$33,200)
- 2021 - **EHS** Top 5% Growth/Graduation Rate (\$54,500)
- 2019 - **EHS** Top 5% Growth/Graduation Rate (\$50,200)

eStem schools have been recently recognized by the state as **Schools on the Move Toward Excellence**

- 2022 - **EVJH, DTJH** Improvement in Overall ESSA Index, **EVJH** Weighted Achievement Increase, **EVJH** Value-Added Growth Increase





Graduation Rates 2018-2022



2017-2018	2018-2019	2019-2020	2020-2021	2021-2022
4 Year = 98.17%	4 Year = 100%	4 Year = 99.32%	4 Year = 97.63%	4 Year = 99.44%
5 Year = 98.40%	5 Year = 98.17%	5 Year = 100%	5 Year = 99.32%	5 Year = 97.63%



Innovative Approaches to Learning and Impact on Education

eStem Advantage

STEM Residency Program

Ignite Afterschool Program

Content Labs

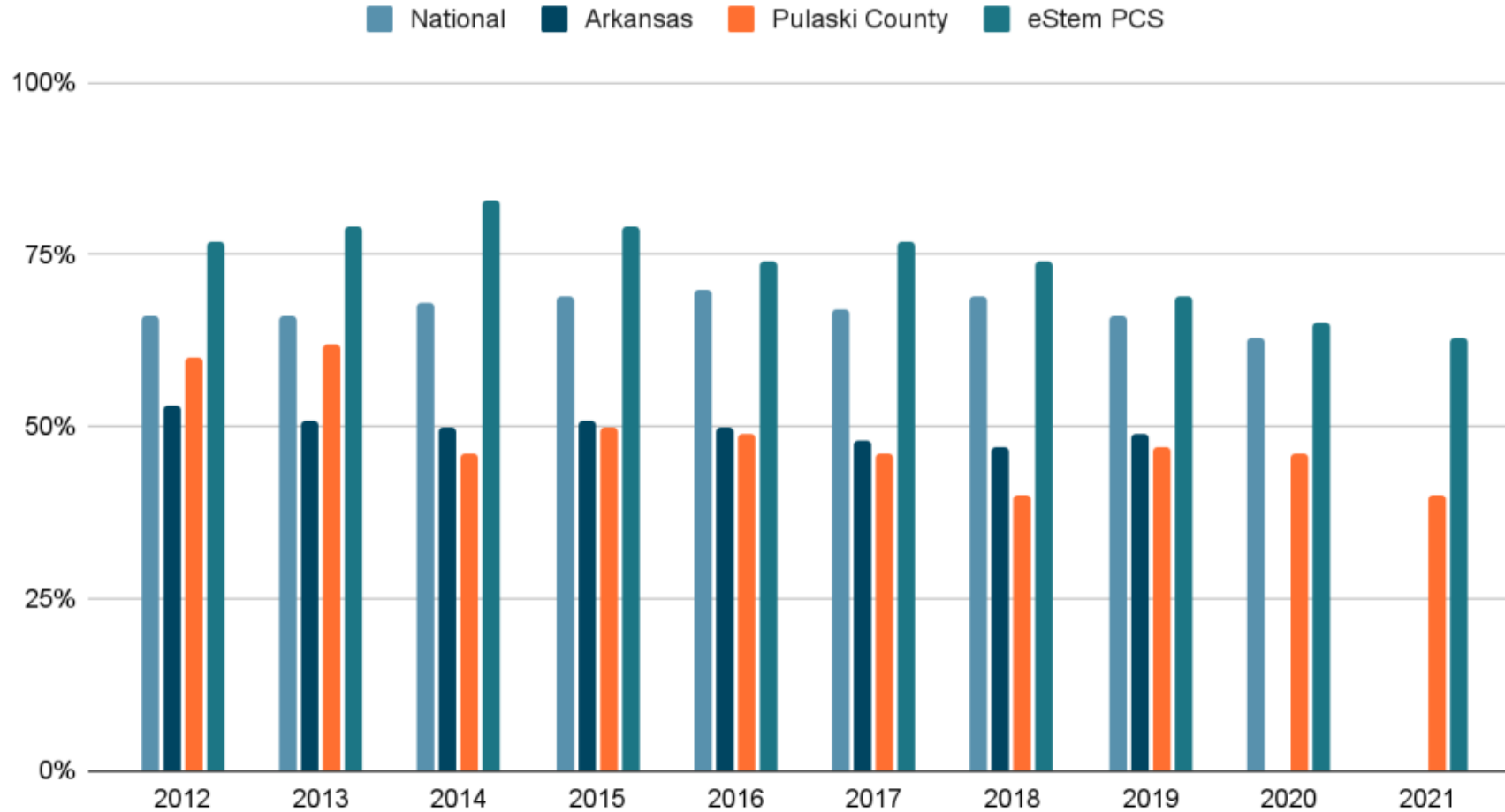
Innovative Grant Program

Educator Performance Awards

Mets Market

College Ready Mets

Percentage of High School Students Entering College



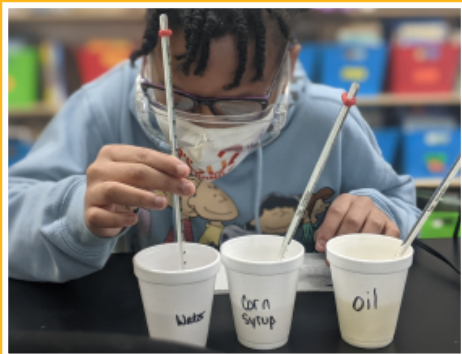
College Ready Mets

College Graduation Year		ARKANSAS	eStem PCS
eStem Cohort 2012	College Graduation 2016	28%	18%
eStem Cohort 2013	College Graduation 2017	31%	39%
eStem Cohort 2014	College Graduation 2018	32%	43%
eStem Cohort 2015	College Graduation 2019	34%	40%
eStem Cohort 2016	College Graduation May 2020	39%	51%
eStem Cohort 2017	College Graduation May 2021	N/A	46%

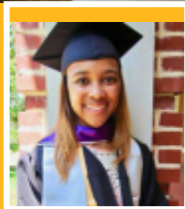
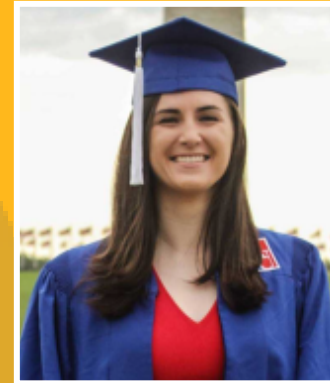


% of Students Completing a College Degree in Four Years

Moving eStem Forward



Moving eStem Forward



Moving eStem Forward



Proud TO BE AN
eStem MET
PUBLIC CHARTER SCHOOLS

Experience the  difference