

Huntsville High School

A decorative teal swoosh consisting of two parallel curved lines, with the top line being slightly longer and ending in a small arrowhead pointing to the right.

December, 2025

A white decorative line starts from the top left corner, curves upwards and to the right, then extends downwards and to the right, ending near the center of the slide.

Student Celebrations

Students of the Week

Week of	Freshmen	Sophomore	Junior	Senior
November 10	Caitlin Coombs	Genesis Juarez	David Diaz	Amy Lira
November 17	Jefferson Perez Salmeron	Aaliyah Garza	Aubrey Jackson	Kamryn Case-Richardson
December 1	Ava Phillips	Ruth Martinez	Oniyah Ledet	Charli Anderson

Signing Day

CHLOE SANDERS - SOFTBALL
LSU Eunice



KOLTON KAUFFMAN - SOCCER
Schreiner University



Signing Day



Signing Day



Saint Nicholas Visits German

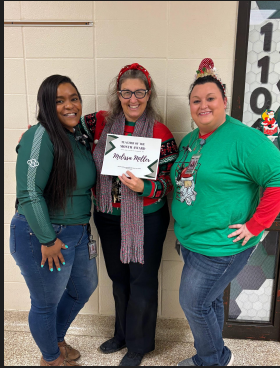


A white decorative line starts from the top left corner, curves upwards and to the right, then extends downwards and to the right, ending near the center of the slide.

Staff

Celebration

Staff of the Month



Teacher of the Month

Melissa Miller
Theater

Office Staff of the Month

Jamie Fullwood
Administrative Assistant



Instructional Assistant of the Month

Debora Byrd
18 + Classroom

Staff Highlights



Time to get SLIMED!!!



A white decorative line starts from the top left corner, curves upwards and to the right, then extends downwards and to the right, ending near the center of the slide.

Teaching & Learning Celebration

Teaching & Learning

COUNTS

Graphing or Elimination?

Ax+By=C

graphing

A $2x - 6y = -2$
 $3x + 2y = -3$

elimination

B $x = 7 + y$
 $2x + y = 26$

graphing

C $y = 2x - 3$
 $y = -x + 3$

For (A/B/C) I would solve by (graphing / elimination) because _____

1:30

I can identify functions

X can't Repeat

I can find the Domain of a function.

-All the X values
 -How far left?
 -How far right?

I can find the Range

-All the y values
 -How far up?
 -How far down?

Less Than $<$ Less Than Equal To \leq

Greater Than $>$ Greater Than Equal To \geq

One arrow - one sign
 Two arrows - All Real Numbers

Rational & Irrational Numbers

Rational / Irrational numbers

Irrational

A number you can't write as a fraction

$\sqrt{2}$ Rational can be written as a fraction

$\frac{1}{2}, \frac{3}{4}, \frac{5}{6}, \frac{7}{8}, \frac{9}{10}$

$3.33333...$

RATIONAL & IRRATIONAL NUMBERS!

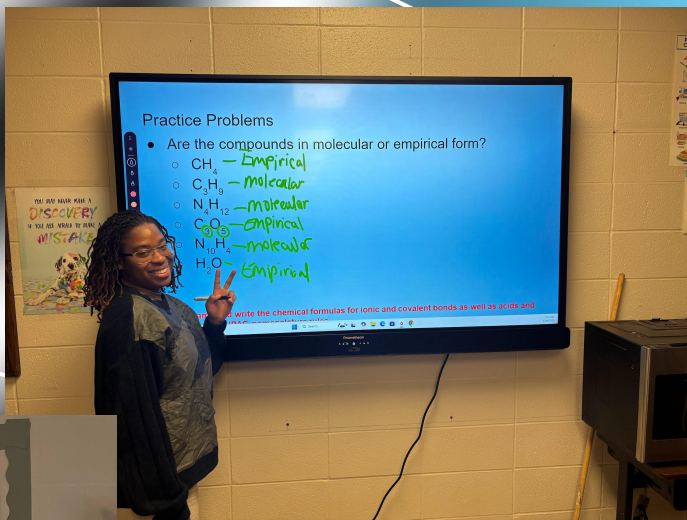
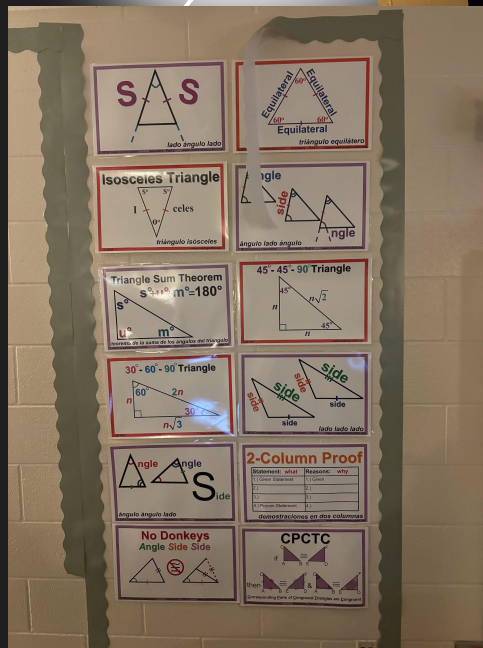
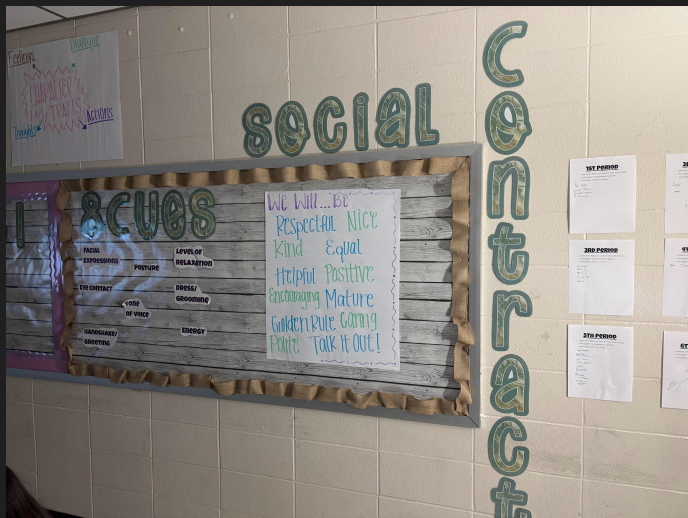
RATIONAL

IRRATIONAL

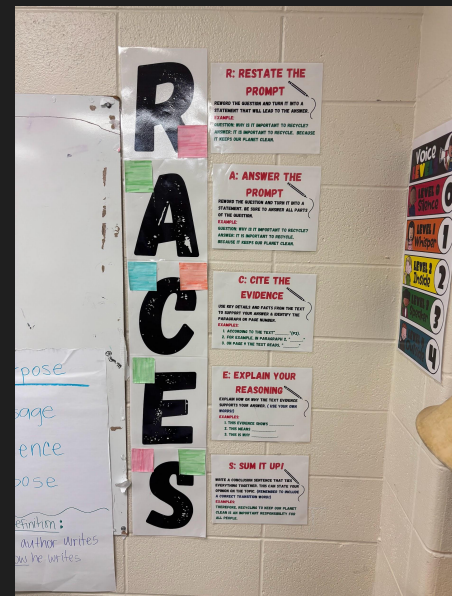
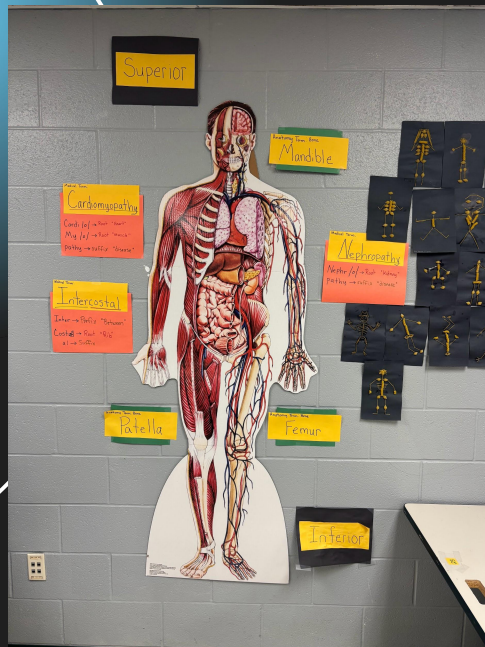
NUMBERS!

NUMBERS!

Teaching & Learning



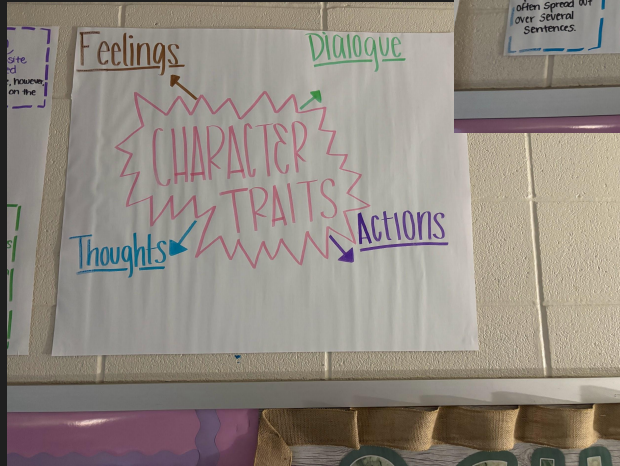
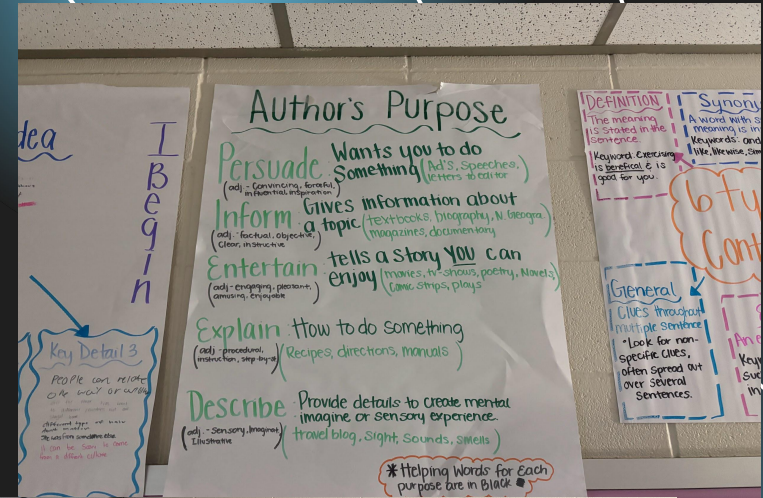
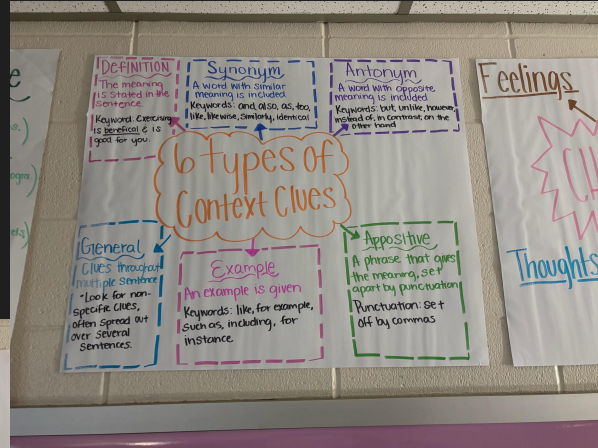
Teaching & Learning



Teaching & Learning



Teaching & Learning





Community Engagement

Hornet Winter Fest



Important Dates

December 4

HHS Choir Concert

December 11

HHS Jazz Band Concert

December
12 & 13

HHS Theatre Production

December 13

Hornet Winter Fest

December 16

HHS Band Concert

December 22
- January 2

Winter Holiday Break



Thank you