



September 3, 2014

To: Mary Larson  
Parkrose School District

From: Glenn Sexton

Subj: Parkrose High School Campus Wireless

Northwest Information Services (NIS) is in receipt of three bids for the Cabling and Infrastructure Implementation in support of campus wide wireless for Parkrose High School. The initial bid package was crafted in a manner that allowed a phase approach to the overall project as well as a value engineering component in the event the bid amounts were beyond budget. The bid package also was constructed in a manner that allows the District to take one or both phases and to use different contractors for each phase if such is in the District's best interest. The initial bids were:

<u>Firm</u>	<u>Phase 1</u>	<u>Phase 2</u>	<u>Total</u>
Christenson	\$199,405.28	\$51,524.05	\$250,929.33
EC	\$117,768.00	\$80,595.00	\$198,363.00
GB Manchester	\$116,300.00	\$58,871.00	\$175,171.00

Upon review of the bid, it was determined that we would exercise the value engineering component which reduced the total number of cables (not the number of access points). This produced the following results:

<u>Firm</u>	<u>Phase 1</u>	<u>Phase 2</u>	<u>Total</u>
Christenson	\$167,226.28	\$46,279.88	\$213,506.33
EC	\$89,349.00	\$78,515.00	\$167,864.00
GB Manchester	\$97,336.00	\$57,819.00	\$155,155.00

Phase 1 (Attachment 1) of the project includes all interior areas of the main building as well the Fine Arts Building. It also includes a new 50/125µm OM3 fiber optic backbone throughout the main building replacing the nearly 20 year-old 62.5/125µm OM1 fiber optic backbone cabling that has been serving the building since day one. This results in a capacity increase from 10Gbps to 100Gbps within the backbone of the facility. The base bid for Phase 1 also includes the construction of a new telecommunications space in the athletic area to address distance limitations.

Phase 2 of the project encompasses all exterior spaces to include the football stadium, baseball fields, tennis courts and parking lots (see Attachment 2 for further detail).

The bid package also included two additive alternates to place additional conduit and cable in support of both wireless connectivity and additional camera on poles in the west-side parking lot.

<u>Firm</u>	<u>Add Alt 1</u>	<u>Add Alt 2</u>	<u>Total</u>
Christenson	Did Not Bid	Did Not Bid	Did Not Bid
EC	\$12,725.00	\$14,225.00	\$26,950.00
GB Manchester	\$16,746.00	\$9,424.00	\$26,170.00

Parkside Business Center The Courtyard Building  
8285 SW Nimbus Ave., Suite 125  
Beaverton, OR 97008



## Recommendations

NIS recommends that the District take the following actions:

1. Award the Phase 1 package to EC
2. Delay Phase 2 until spring of 2015 and revisit pricing in light of then current wireless bridge technology that may allow the District to save the cost of trenching to the field house.
3. Revisit overall coverage to conform to attachment 3. This would eliminate the coverage in:
  - the southwest corner of the campus
  - west parking lot
  - far east parking and area up to NE 122<sup>nd</sup> Avenue
  - baseball fields

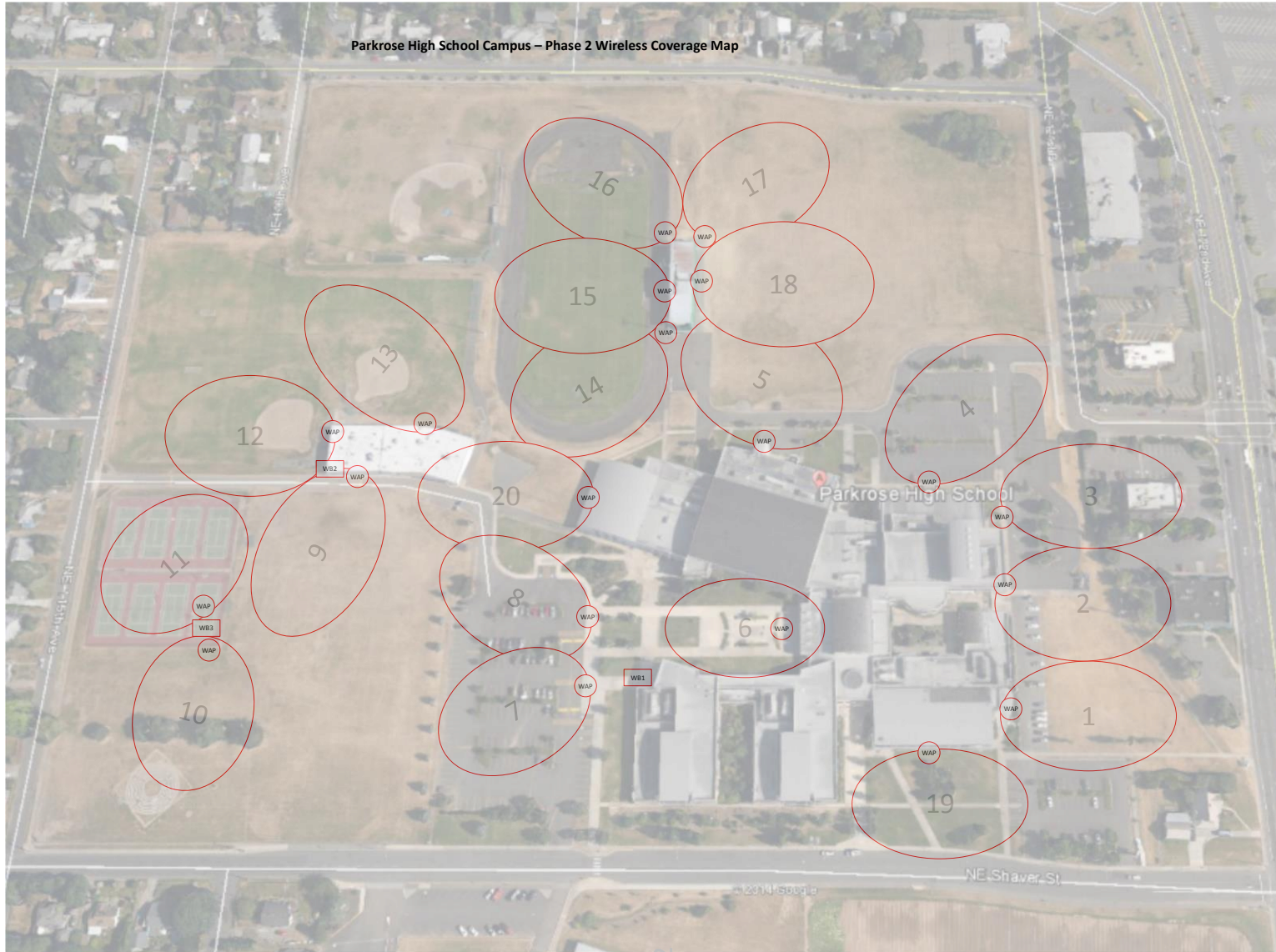
Wireless coverage would still be present in all of the areas of major activity for students and visitors.

Steps 2 and 3 have a potential savings in the \$20-25,000 range while still allowing a generous wireless coverage area.

4. Consider Additive Alternates 1 and 2 as a separate package addressing video surveillance needs in the west parking lot.



Attachment 1



Attachment 2



Attachment 3