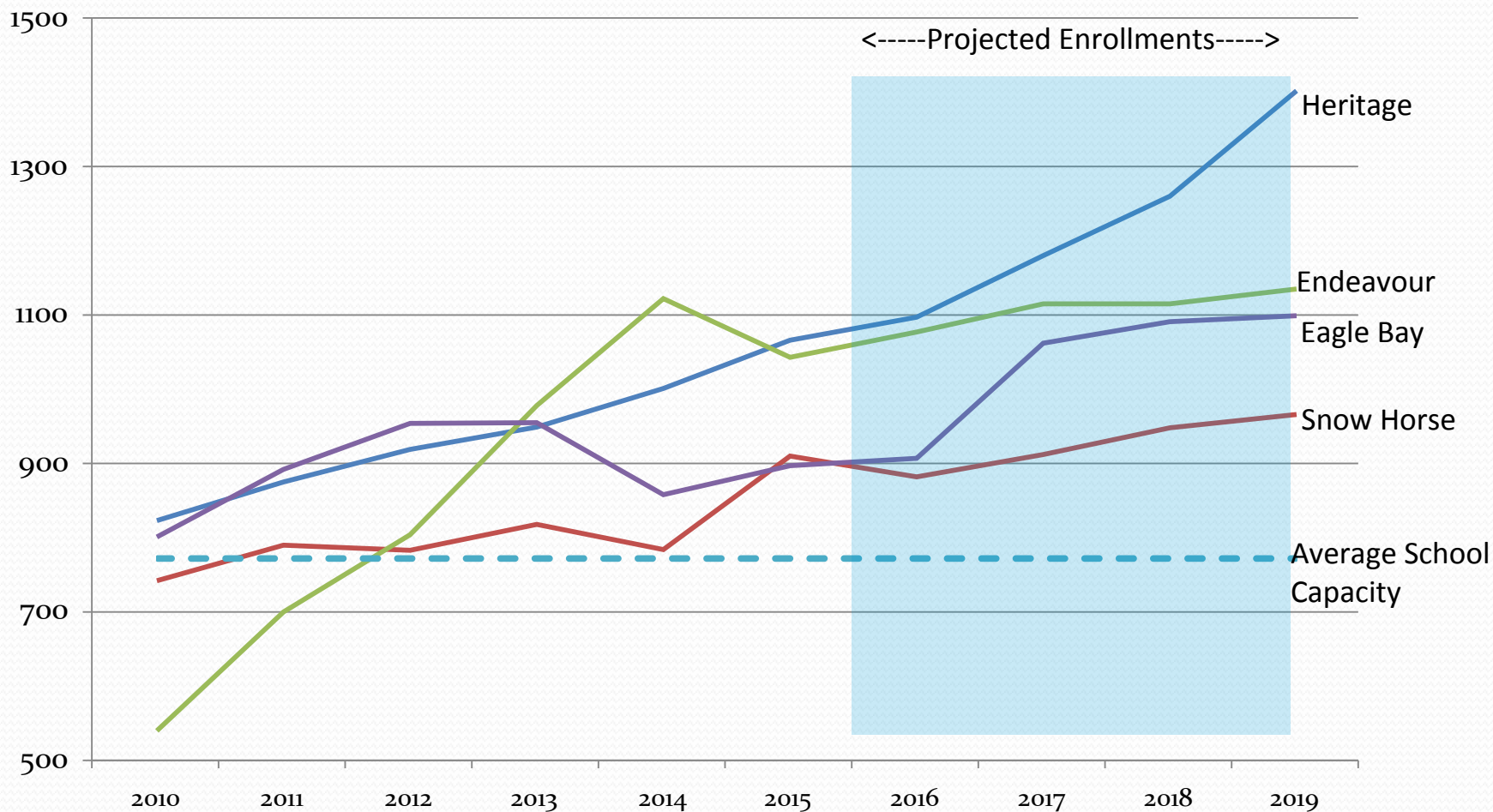


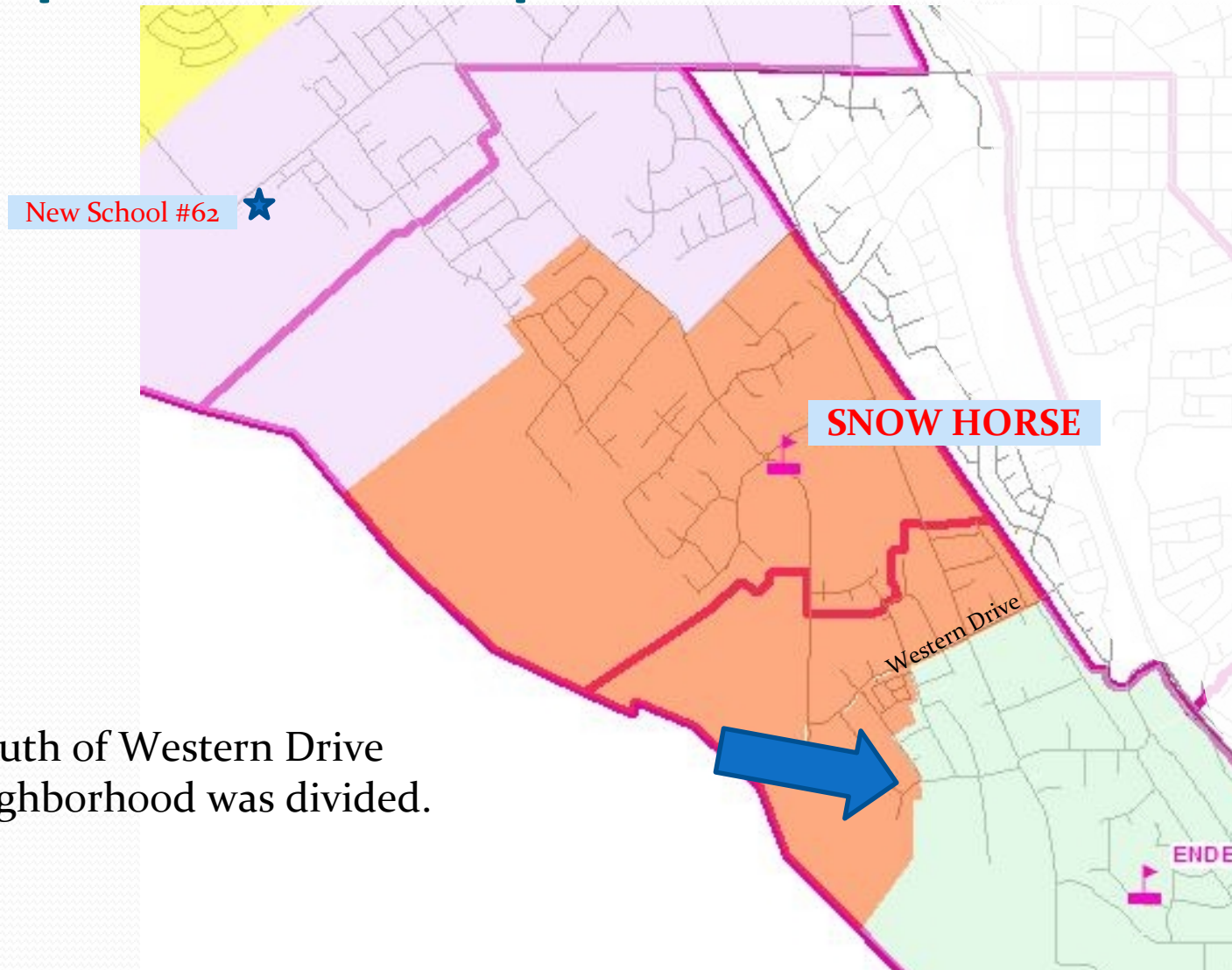
Enrollment History & Projections



Current Students and Projections

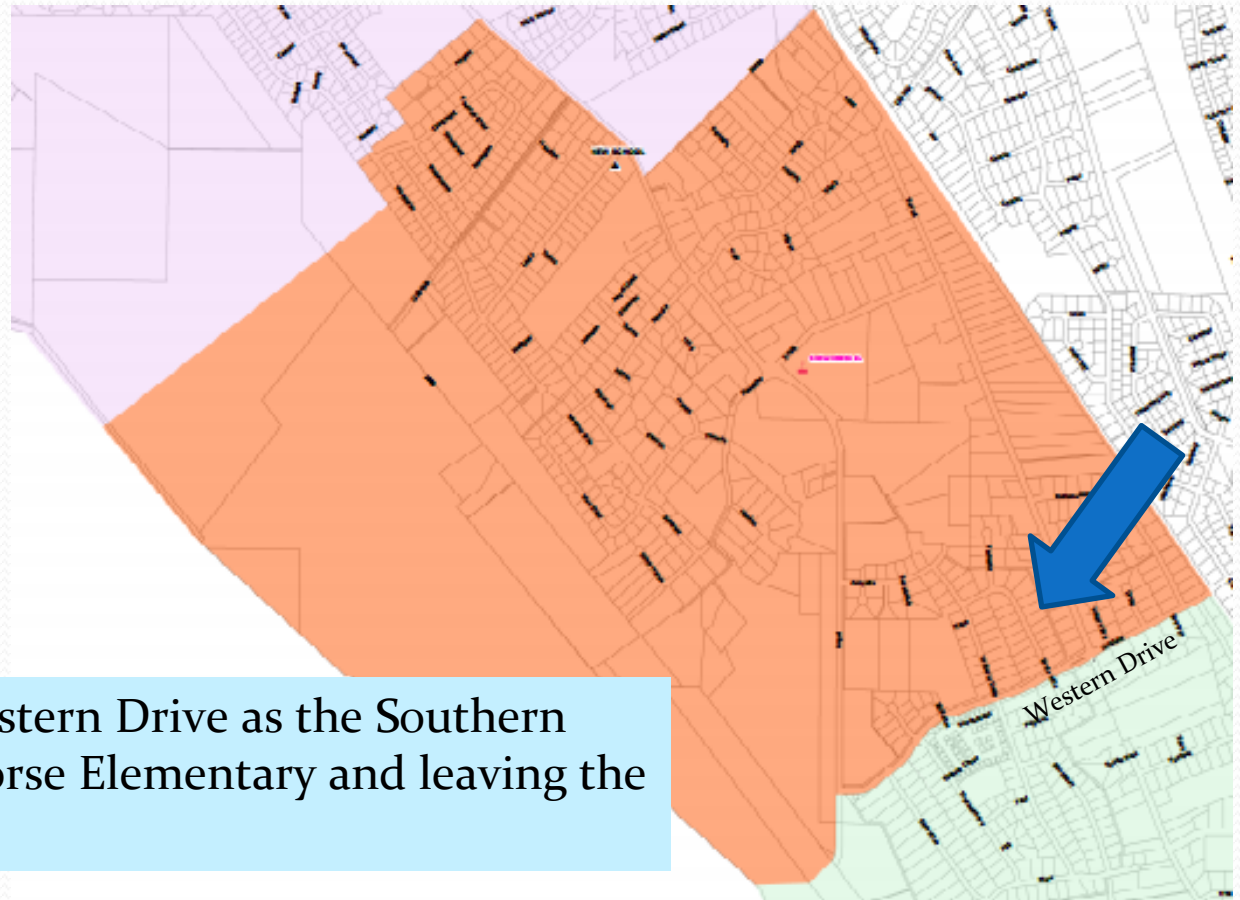
	Oct 2015 Regular Education Only	Potential Growth Estimate	Total Projected Enrollment in Five years
Heritage El	1,020	425	1,445
Snow Horse El	887	115	1,002
Endeavour El	1,038	68	1,106
Eagle Bay El	849	234	1,083
Total	3,794	842	4,636
Average for four :	948.5		1,159
Average for six :	632.3		772
<i>**These averages would be optimal, but not always reasonable within school boundaries</i>			

Proposal at Open House



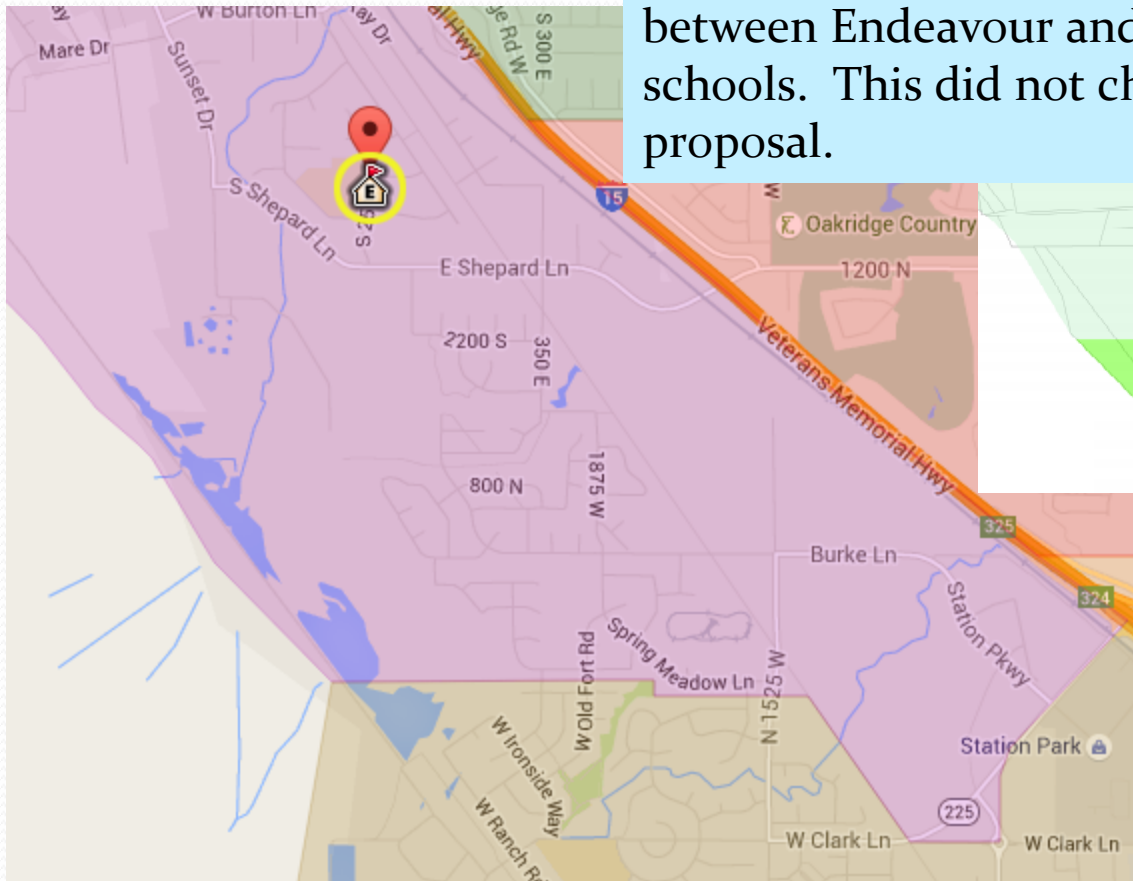
Area just south of Western Drive
where a neighborhood was divided.

New Proposal

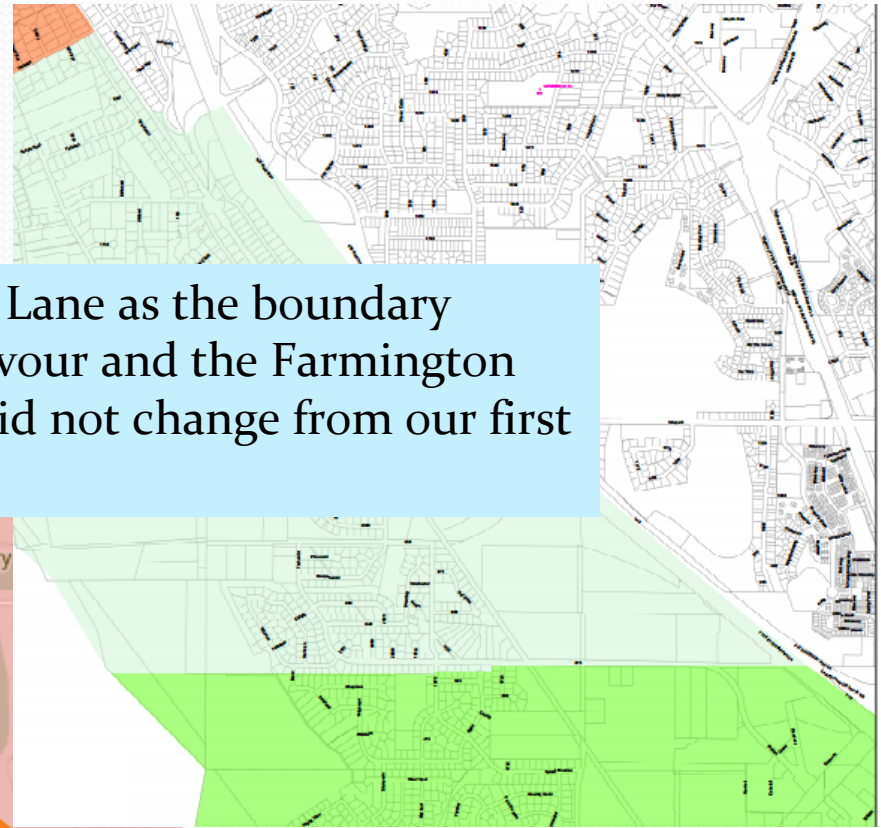


We suggest using Western Drive as the Southern Boundary of Snow Horse Elementary and leaving the Rest at Endeavour

Old Boundary



We used Burke Lane as the boundary between Endeavour and the Farmington schools. This did not change from our first proposal.

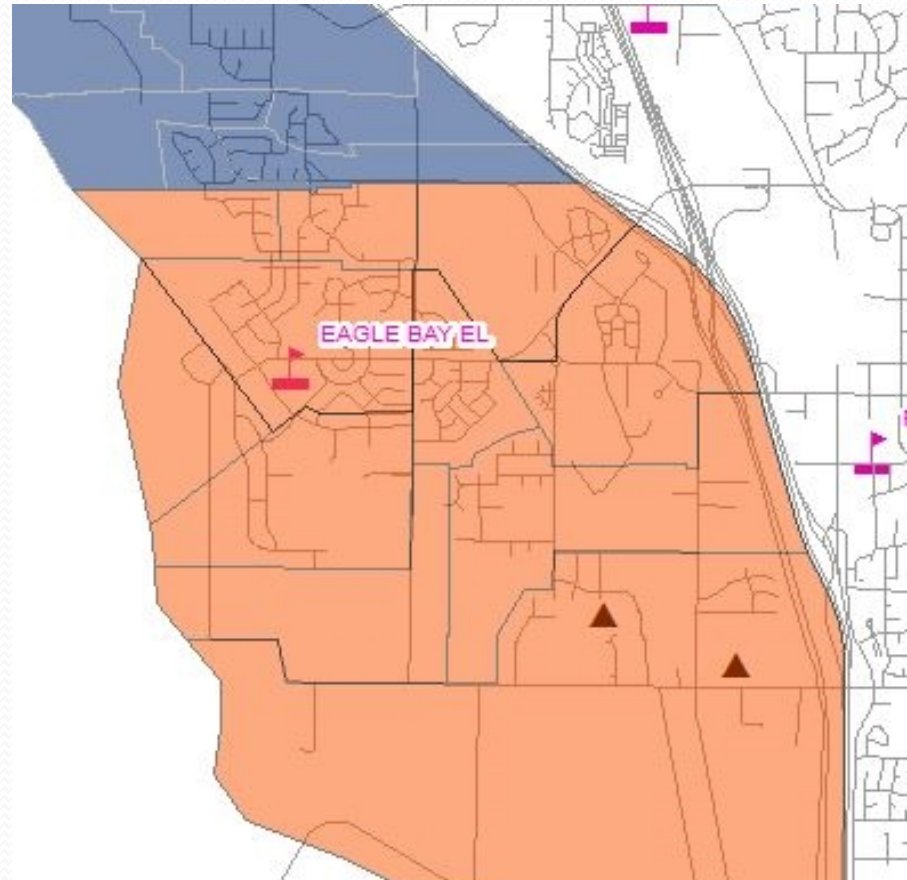


New Boundary

Eagle Bay as a Magnet Immersion School

New School #61 English Only

Former School	Parcel	New Eagle Bay	New School #61
Endeavour	ED00	17	0
Endeavour	ED02	3	0
Endeavour	ED03	3	0
Endeavour	ED04	3	0
Endeavour	ED05	3	64
Endeavour	ED06	2	103
Endeavour	ED08	0	24
Endeavour	ED10	8	0
Eagle Bay	EB00	193	140
Eagle Bay	Var	107	0
Eagle Bay	EB01	42	50
Eagle Bay	EB03	55	42
Eagle Bay	EB05	78	30
Eagle Bay	EB06	10	4
Eagle Bay	EB07	53	42
		577	499
		Immer- sion	English Only



Our first proposal showed Eagle Bay as the English only school.
Our newest proposal is for Eagle Bay be the Magnet Immersion school.

Projections based on the new proposal

	FY2016	FY2017	FY2018	FY2019	FY2020
Heritage	789	833	854	895	983
Elem #62	543	605	694	733	794
Snow					
Horse	536	596	631	667	691
Endeavour	808	815	815	815	835
Eagle Bay	577	607	614	634	644
Elem #61	499	569	611	639	649
	3752	4025	4219	4383	4596

