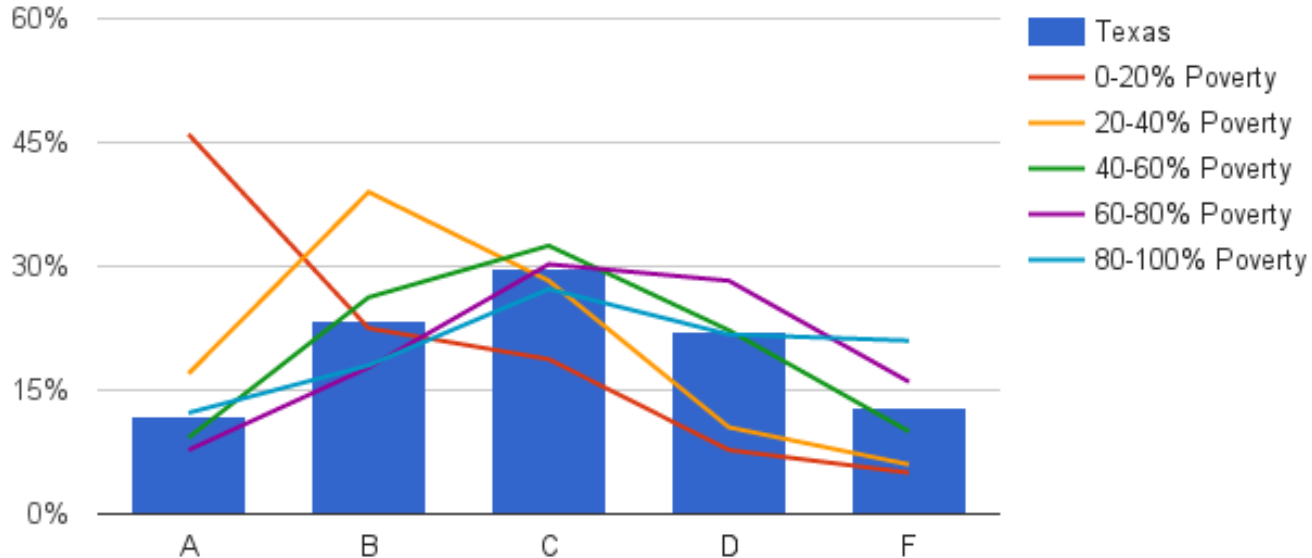


Grade Distribution by Percentage of Economically Disadvantaged by District All Domains Combined

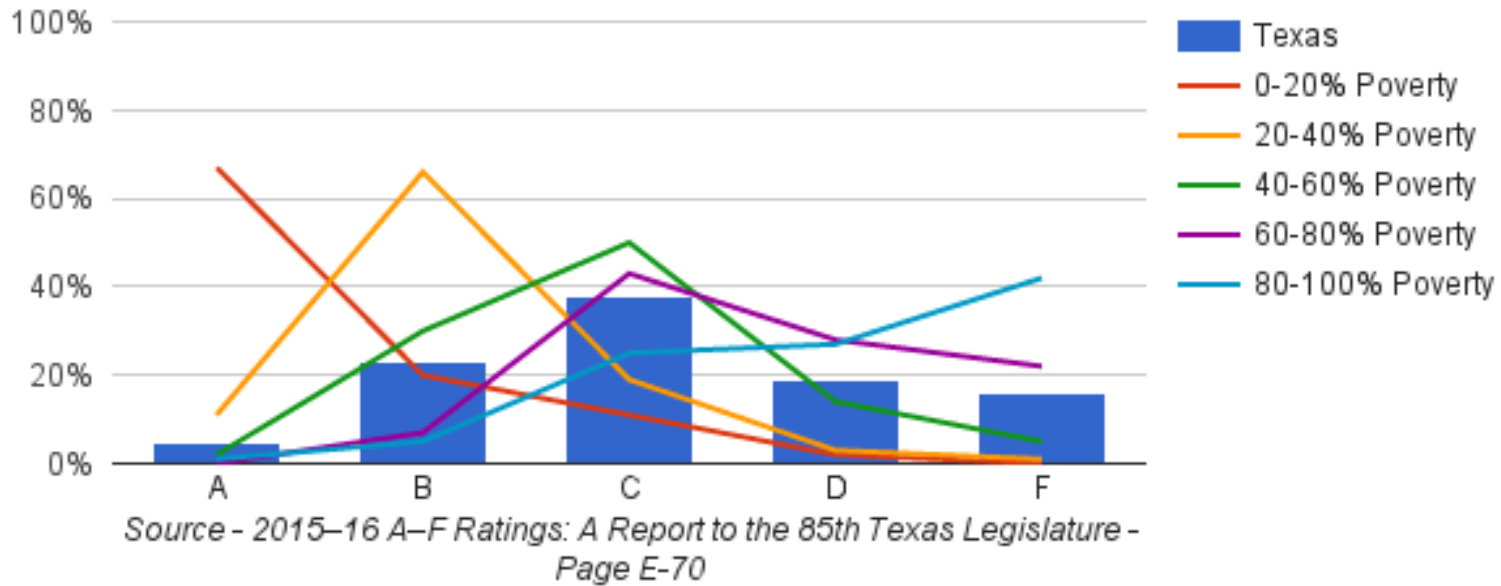


Source - 2015-16 A-F Ratings: A Report to the 85th Texas Legislature
- Page E-70

The assignment of grades in all grades for Texas is a bell curve and shows that the majority of Texas schools earned a C.

- 62% of schools with less than 40% poverty received A's & B's & 5% of these schools received F's.
- 70% of schools with 40+% poverty received C,D & F & 10% of these schools received A's.

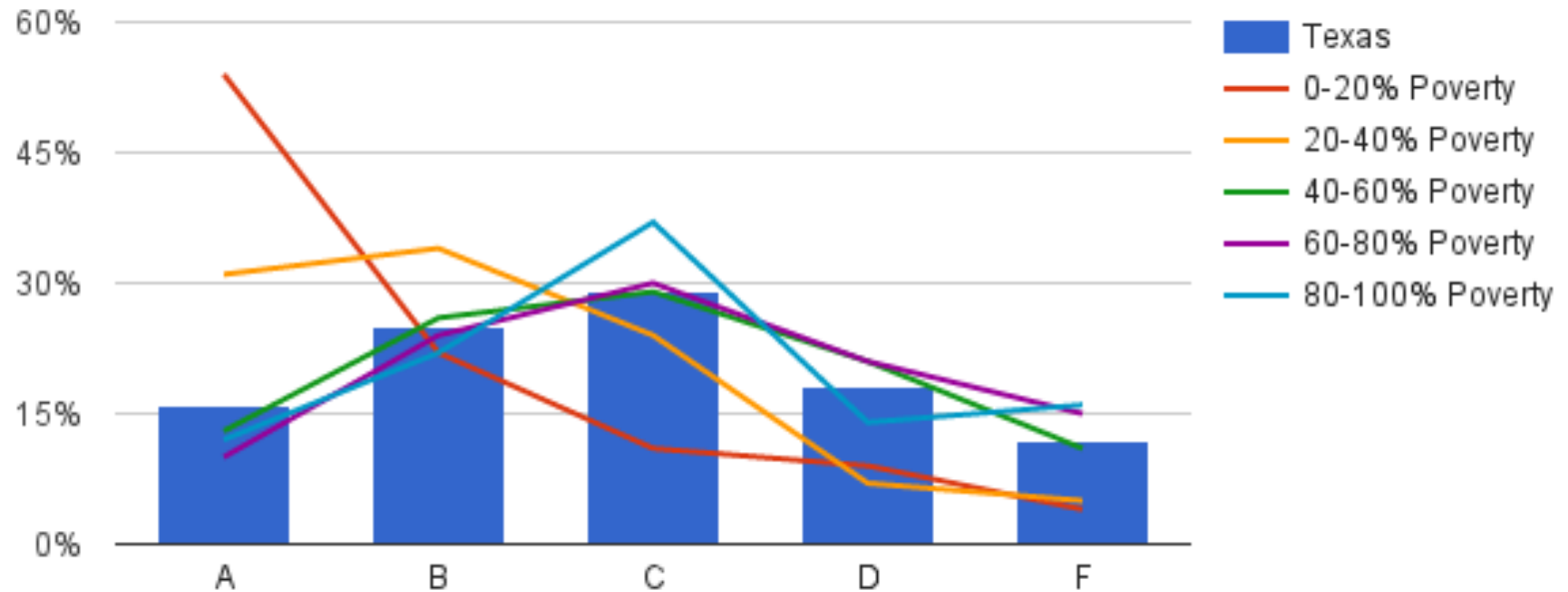
District Domain 1 Ratings based on Poverty



The assignment of grades for Texas is similar to a bell curve and shows performance to correlate level of poverty with lower grades.

- 87% of schools with less than 20% poverty received an A or B with 0% of these schools earning an F.
- 77% of schools with 20-40% poverty received an A or B with 1% of these schools earning an F.
- Less than 10% of schools with 60% poverty or greater received an A or B.

District Domain 2 Ratings based on Poverty

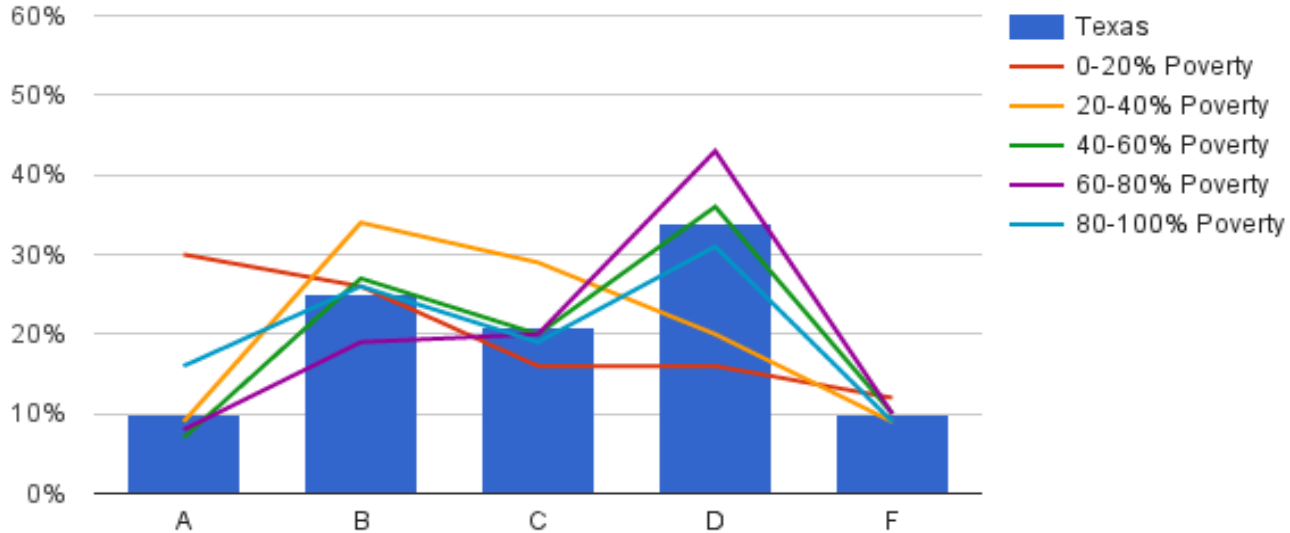


Source - 2015–16 A–F Ratings: A Report to the 85th Texas Legislature - Page E-70

The assignment of grades for Texas is basically a bell curve and shows that the majority of Texas schools received a C.

- 76% of schools with less than 20% poverty received an A or B.
- 64% of schools with 20-40% poverty received an A or B.
- Schools with 40% poverty or greater predominantly earned a the grade of C.

District Domain 3 Ratings based on Poverty

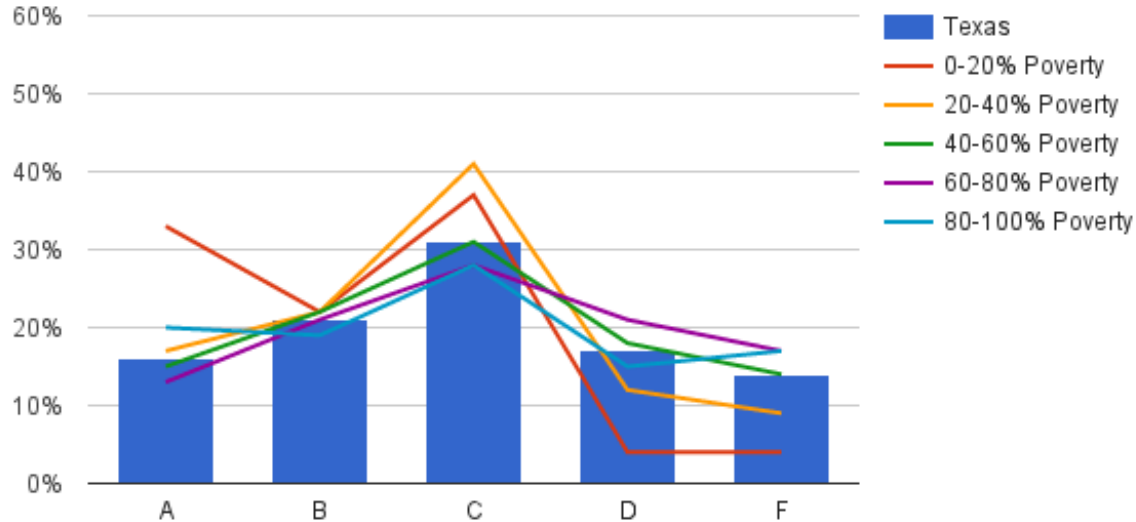


Source - 2015–16 A–F Ratings: A Report to the 85th Texas Legislature - Page E-70

The assignment of grades for Texas shows that the majority of Texas schools earned a D.

- 56% of schools with less than 20% poverty received an A or B.
- 43% of schools with 20-40% poverty received an A or B.
- Schools with 40% poverty or greater predominantly received a D.

District Domain 4 Ratings based on Poverty



Source - 2015–16 A–F Ratings: A Report to the 85th Texas Legislature - Page E-70

The assignment of grades for Texas is basically a bell curve.

- The majority of schools received a C.
- 55% of schools with less than 20% poverty received an A or B.
- 63% of schools with more than 40% poverty receive C, D or F.