



To: Connie Morgenroth, Asst. Superintendent Business & Operations

From: Gwynetheia Shabazz Pope

CC: April Pinkham, Finance Director
John Pruitt, Transportation Director

Date: 12/8/2020

Re: Request for Quote (Informal) 2021 F-750 Diesel Regular Cab Box Truck
Evaluation and Award Recommendation

Enclosed for your review and approval is the award recommendation for quotes obtained on the purchase of a 2021 F-750 Diesel Regular Cab Box Truck.

HISTORY

The objective of the Request for Quotes was to obtain a cost comparison on the truck the District is interested in purchasing. We reached out to three vendors to ensure we were guaranteed the best price and best value for GISD. The quotes are attached.

| | |
|---------------------------------|--|
| Chastang Ford \$78,959.00 | Buyboard contract 601-19 Vehicles, Heavy Duty Trucks |
| Grande Truck Center \$82,360.00 | Buyboard contract 601-19 Vehicles, Heavy Duty Trucks |
| Rush Truck Center \$88,402.52 | Buyboard contract 601-19 Vehicles, Heavy Duty Trucks |

AWARD RECOMMENDATION

The Purchasing Department recommends awarding the contract to Chastang Ford in the amount of \$ 78,959.00 (plus the 800.00 fee to Buyboard) as the Best Value to the District.

Gwynetheia Shabazz Pope, CTPM, CTCM
Purchasing Coordinator

Gwynetheia Shabazz Pope

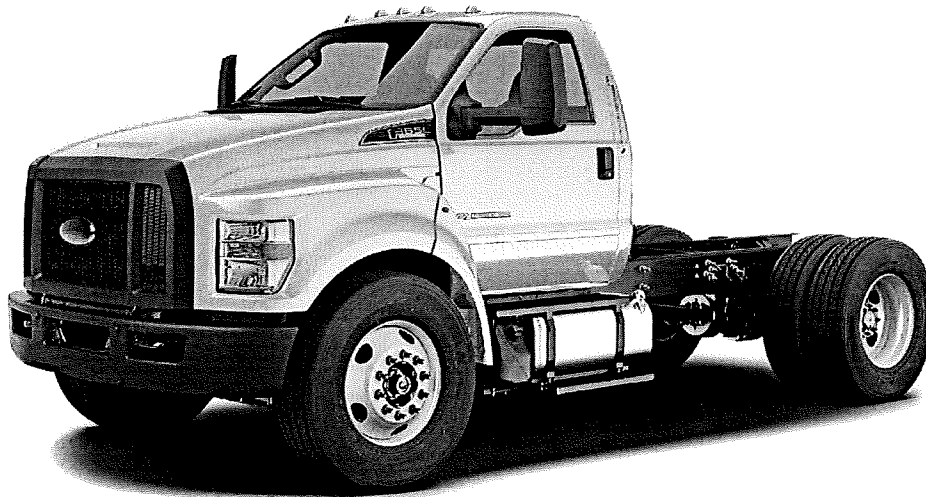
Gwynetheia V. Pope, CTPM, CTCM
Purchasing Coordinator
gwynetheiapope@gisd.org

3904 Avenue T.
Galveston, TX 77550
www.gisd.org

Main: 409.766.5100
Direct: 409.766.5158
Fax: 409.762.8841

2021 F-750 Diesel Regular Cab Base (F7D)

Price Level: 120



Client Proposal

Prepared by:

Ed Miller

Office: 713-678-5007

Email: EMILLER@CHASTANGFORD.COM

Quote ID: GALSD21F7D

Date: 09/18/2020



Chastang Ford | 6200 N. Loop East, Houston, Texas, 770261936

Office: 713-678-5000 | Fax: 713-678-5001



Prepared by: Ed Miller
09/18/2020

Chastang Ford | 6200 N. Loop East Houston Texas | 770261936

2021 F-750 Diesel Regular Cab Base (F7D)

Price Level: 120 | Quote ID: GALSD21F7D

As Configured Vehicle

| Code | Description | MSRP |
|---------------------------------|---|-------------|
| Base Vehicle | | |
| F7D | Base Vehicle Price (F7D) | \$70,945.00 |
| Engines | | |
| 99C | 6.7L Power Stroke V8 Turbo Diesel - 270 HP @ 2400 RPM Includes Engine Exhaust Brake and manual regen capability. Torque: 700 ft.lbs. @ 1500 rpm. <i>Governed RPM: 3200. Includes CARB clean idle label - may be removed if un-necessary.</i> | STD |
| 425 | 50-State Emissions | N/C |
| 41H | Engine Block Heater, Phillips, 120 Volt/750 Watt | \$60.00 |
| Transmissions | | |
| 44G | Ford TorqShift HD 6-Speed Automatic - Double Overdrive, less PTO Provision, less Park Pawl | STD |
| 41A | Transmission Power Take-Off Provision w/LiveDrive Capability and Tow/Haul | \$895.00 |
| Front Wheels & Tires | | |
| 643 | Wheels, Front 22.5x8.25 White Powder Coated Steel, 10-Hole <i>(285.75MM BC) hub piloted, flanged nut, metric mount, 8.25 DC rims; with steel hubs.</i> | STD |
| T2B | Tires, Front Two 11R22.5G Goodyear Fuel Max RSA (497 rev/mile) | STD |
| Rear Wheels & Tires | | |
| 663 | Wheels, Rear 22.5x8.25 White Powder Coated Steel, 10-Hole <i>(285.75MM BC) hub piloted, flanged nut, metric mount, 8.25 DC rims; with steel hubs.</i> | STD |

Prices and content availability as shown are subject to change and should be treated as estimates only. Actual base vehicle, package and option pricing may vary from this estimate because of special local pricing, availability or pricing adjustments not reflected in the dealer's computer system. See salesperson for the most current information.

Note: Prices and content availability as shown are subject to change and should be treated as estimates only. Actual base vehicle, package and option pricing may vary from this estimate because of special local pricing, availability or pricing adjustments not reflected in the dealer's computer system. See salesperson for the most current information.



Prepared by: Ed Miller
09/18/2020

Chastang Ford | 6200 N. Loop East Houston Texas | 770261936

2021 F-750 Diesel Regular Cab Base (F7D)

Price Level: 120 | Quote ID: GALSD21F7D

As Configured Vehicle (cont'd)

| Code | Description | MSRP |
|----------------------------------|--|----------|
| R2B | Tires, Rear Four 11R22.5G Goodyear Fuel Max RSA (497 rev/mile) | STD |
| Brakes | | |
| 67H | Hydraulic Brake System - Bosch HydroMax w/Traction Control <i>Full power with automatic adjustment, 4-channel ABS antilock brake system. Includes 12" x 3" (Bosch) DSSA type rear axle mounted parking brake. Orscheln lever control, right of driver.</i> | STD |
| Front Axle and Suspension | | |
| 43N | 10,000 lb. Cap. Non-Driving - Dana E-1002I - I-Beam Type | STD |
| 61C | Taper-Leaf Springs, Parabolic - 10,000 lb. Cap <i>2-leaf, 62" x 3.15". Also includes, standard duty, dual, double acting shock absorbers.</i> | STD |
| Rear Axle and Suspension | | |
| 475 | 21,000 lb. Single Reduction - Open - Dana / Spicer 21060S <i>NOTE: When specifying an axle ratio, check performance guidelines for startability and gradeability.</i> | STD |
| 18P | Driveshaft Upgrade <i>A heavy duty drive line is optional. Heavy duty drive line components are required in more demanding applications, such as higher torque engines or deep reduction low gear(s). The heavier SPL-140 driveshaft is powertrain dependent and should be used when more durability is required by the vocation or customer.</i> | \$185.00 |
| 68R | Multi-Leaf Springs - 23,000 lb. Cap <i>11-leaf. Includes 2,000 lb auxiliary springs for load stabilization.</i> | \$230.00 |
| X6B | 6.17 Axle Ratio | N/C |
| Wheelbase | | |
| 260WB | 260" Wheelbase/186" CA/120" AF/419" OAL | \$965.00 |
| Frame | | |

Prices and content availability as shown are subject to change and should be treated as estimates only. Actual base vehicle, package and option pricing may vary from this estimate because of special local pricing, availability or pricing adjustments not reflected in the dealer's computer system. See salesperson for the most current information.

Note: Prices and content availability as shown are subject to change and should be treated as estimates only. Actual base vehicle, package and option pricing may vary from this estimate because of special local pricing, availability or pricing adjustments not reflected in the dealer's computer system. See salesperson for the most current information.



Prepared by: Ed Miller
09/18/2020

Chastang Ford | 6200 N. Loop East Houston Texas | 770261936

2021 F-750 Diesel Regular Cab Base (F7D)

Price Level: 120 | Quote ID: GALSD21F7D

As Configured Vehicle (cont'd)

| Code | Description | MSRP |
|--|--|----------|
| 535 | Single Channel - Straight 'C' 15.14 SM, 80,000 PSI <i>1,211,200 RBM. High strength low alloy steel. 10.250" x 3.092" x 0.375" (260.4mm x 78.5mm x 9.5mm).</i> | STD |
| 18D | Special Rating GVWR - Limited to 25,999 lb. GVWR | \$120.00 |
| Exhaust | | |
| 91G | Under Cab, Right Side Outlet, Switchback-Style <i>Single, horizontal muffler, right side, under cab, outside of frame rail with rear discharge.</i> | STD |
| Fuel Tanks | | |
| 65B | Fuel Tank - LH 50 Gallon Rectangular - Aluminum | STD |
| 12 | 12 Gal. Single Tank Fuel Fill. Mandatory Charge Applied, Based On Tank Selection | \$0.00 |
| Electrical / Alternator / Battery | | |
| STDALT | Extra Heavy Duty Alternator - 12-Volt, 200 Amp Denso SC5 | Included |
| 55M | Jump Start Stud - Remote Mounted | \$90.00 |
| STDBAT | Battery - Two 750 CCA, 1500 Total, Includes Steel Battery Box <i>12Volt, Motorcraft.</i> | STD |
| 962 | Daytime Running Lamps | \$45.00 |
| 16V | Voltmeter <i>Available in message center.</i> | \$100.00 |

Seats

Prices and content availability as shown are subject to change and should be treated as estimates only. Actual base vehicle, package and option pricing may vary from this estimate because of special local pricing, availability or pricing adjustments not reflected in the dealer's computer system. See salesperson for the most current information.

Note: Prices and content availability as shown are subject to change and should be treated as estimates only. Actual base vehicle, package and option pricing may vary from this estimate because of special local pricing, availability or pricing adjustments not reflected in the dealer's computer system. See salesperson for the most current information.



Prepared by: Ed Miller
09/18/2020

Chastang Ford | 6200 N. Loop East Houston Texas | 770261936

2021 F-750 Diesel Regular Cab Base (F7D)

Price Level: 120 | Quote ID: GALSD21F7D

As Configured Vehicle (cont'd)

| Code | Description | MSRP |
|----------------------|---|----------|
| 88L | 30/70 Air Ride Driver (Integral Air Pump) & Fixed 2-Passenger Bench - Vinyl | \$440.00 |
| Cab Interior | | |
| 600A | Preferred Equipment Package 600A <i>Includes:</i> - Bumper, Front - Black, Full Width - Wheel Seals, Front - Oil lubricated, SKF ScotSeal PlusXL Seals - Wheel Seals, Rear - Oil lubricated, SKF ScotSeal PlusXL Seals - Manual Regen Initiation - Driver Interface in Message Center - Engine Exhaust Brake - Extra Heavy Duty Alternator - 12-Volt, 200 Amp Denso SC5 - Painted Grille - Plastic - Lights - Roof Marker/Clearance - Amber Lenses, 5 Lights - Tow Hooks, Front (2) - Frame-Mounted, Painted Black - Four Body Builder Switches - Mounted in Center Instrument Panel <i>With connector access located in engine compartment. Amperages vary by switch: 10, 15, 25, 25.</i> - Floor Covering - Black Vinyl - Intelligent Oil Life Monitor - Steering Column - Tilt / Telescoping - Steering Wheel - Black PVC w/Integral Cruise Control Switches, includes Audio Controls - Body Builder Wiring - At Back of Cab, Combined <i>Includes sealed connectors for 2 ground circuits, with combined left/stop, combined right/stop, park lamps, back up lamps. Also includes 2 additional pass through wires to cab.</i> | N/C |
| 90P | Power Equipment Group - (Included in (90A) Appearance Group) <i>Includes power front side windows, power door locks and door trim panel.</i> | \$470.00 |
| 588 | Radio: AM/FM Stereo w/2 Speakers, USB input, Clock Display and Bluetooth | STD |
| Cab Exterior | | |
| 54C | Mirrors, Dual - Heated Rectangular, XL2020 - 102" Width <i>Integral spot mirror, sail type, manual fold, solid black finish.</i> | \$90.00 |
| 165 | Mud Flap Holder Without Flaps | \$95.00 |
| Miscellaneous | | |
| PAINT | Paint Type - Environmentally Friendly, "3 - Wet System" | STD |

Interior Colors

Prices and content availability as shown are subject to change and should be treated as estimates only. Actual base vehicle, package and option pricing may vary from this estimate because of special local pricing, availability or pricing adjustments not reflected in the dealer's computer system. See salesperson for the most current information.

Note: Prices and content availability as shown are subject to change and should be treated as estimates only. Actual base vehicle, package and option pricing may vary from this estimate because of special local pricing, availability or pricing adjustments not reflected in the dealer's computer system. See salesperson for the most current information.



Prepared by: Ed Miller
09/18/2020

Chastang Ford | 6200 N. Loop East Houston Texas | 770261936

2021 F-750 Diesel Regular Cab Base (F7D)

Price Level: 120 | Quote ID: GALSD21F7D

As Configured Vehicle (cont'd)

| Code | Description | MSRP |
|-----------------------|---|--------------------|
| E_01 | Gray | N/C |
| Primary Colors | | |
| YZ_01 | Oxford White | N/C |
| Upfit Options | | |
| 60-140 | INSTALL 2500 LBTOMMY GATE RAIL LIFT GATE | \$6,995.00 |
| Buy Board | Buy Board Fee <i>CONTRACT 601-19</i> | \$400.00 |
| 24 VAN | INSTALL A 24 FOOT VAN BODY | \$11,785.00 |
| SUBTOTAL | | \$93,910.00 |
| Destination Charge | | \$2,095.00 |
| TOTAL | | \$96,005.00 |

Prices and content availability as shown are subject to change and should be treated as estimates only. Actual base vehicle, package and option pricing may vary from this estimate because of special local pricing, availability or pricing adjustments not reflected in the dealer's computer system. See salesperson for the most current information.

Note: Prices and content availability as shown are subject to change and should be treated as estimates only. Actual base vehicle, package and option pricing may vary from this estimate because of special local pricing, availability or pricing adjustments not reflected in the dealer's computer system. See salesperson for the most current information.



Prepared by: Ed Miller
09/18/2020

Chastang Ford | 6200 N. Loop East Houston Texas | 770261936

2021 F-750 Diesel Regular Cab Base (F7D)

Price Level: 120 | Quote ID: GALSD21F7D

Pricing Summary - Single Vehicle

MSRP

Vehicle Pricing

| | |
|--------------------|--------------------|
| Base Vehicle Price | \$70,945.00 |
| Options & Colors | \$3,785.00 |
| Upfitting | \$19,180.00 |
| Destination Charge | \$2,095.00 |
| Subtotal | \$96,005.00 |

Pre-Tax Adjustments

| Code | Description | |
|--------------|-------------------------|--------------------|
| 01 ft | DISCOUNT AND CONCESSION | -\$17,046.00 |
| Total | | \$78,959.00 |

Customer Signature

Acceptance Date

Prices and content availability as shown are subject to change and should be treated as estimates only. Actual base vehicle, package and option pricing may vary from this estimate because of special local pricing, availability or pricing adjustments not reflected in the dealer's computer system. See salesperson for the most current information.

Note: Prices and content availability as shown are subject to change and should be treated as estimates only. Actual base vehicle, package and option pricing may vary from this estimate because of special local pricing, availability or pricing adjustments not reflected in the dealer's computer system. See salesperson for the most current information.



Prepared by: Ed Miller
09/18/2020

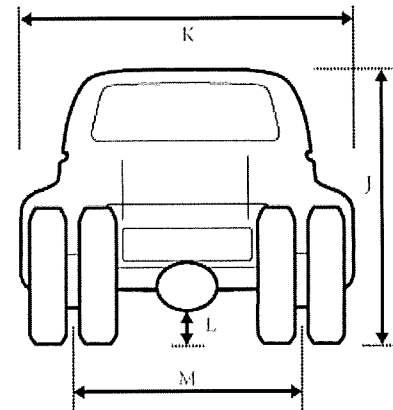
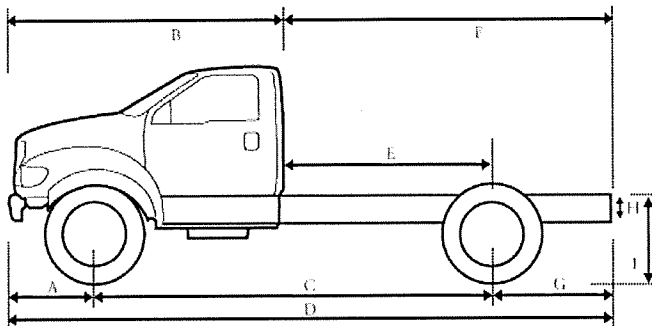
Chastang Ford | 6200 N. Loop East Houston Texas | 770261936

2021 F-750 Diesel Regular Cab Base (F7D)

Price Level: 120 | Quote ID: GALSD21F7D

Vehicle Dimension and Performance Summary

Performance predictions in this report represent an estimate of vehicle performance based on standard operating conditions. Variations in customer equipment, load configuration, ambient conditions, and/or operator driving techniques can cause significant variations in vehicle performance. These values are not representative of results that may be shown in actual dynamometer tests. This report should therefore be used as a guide for comparative vehicle performance.



Dimensions

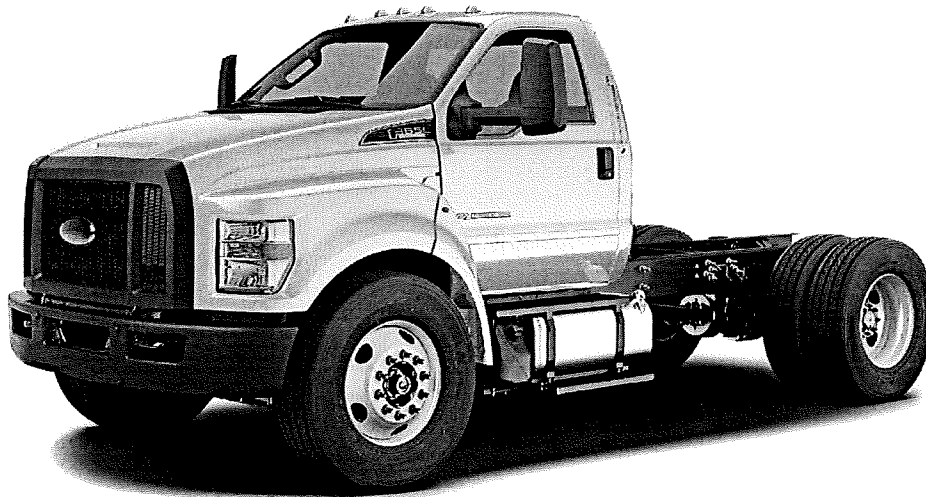
| | | |
|---|-----------------------------------|------------|
| A | Front of Bumper to Front Axle | 39.00 in. |
| B | Front Bumper to Back of Cab (BBC) | 113.00 in. |
| C | Wheelbase (WB) | 260.00 in. |
| D | Overall Length (OAL) | 419.00 in. |
| E | Back of Cab to Rear Axle (CA) | 186.00 in. |
| F | Back of Cab to End of Frame | 306.00 in. |
| G | Rear Axle to End of Frame (AF) | 120.00 in. |
| H | Frame Section Height | 10.30 in. |
| I | Rear Frame Height Unloaded | 38.20 in. |
| I | Rear Frame Height Loaded | 36.80 in. |
| J | Cab Height | 94.30 in. |
| K | Body Width | 96.70 in. |
| L | Maximum Ground Clearance | N/A |
| L | Minimum Ground Clearance | N/A |
| M | Front Tread | 83.80 in. |
| M | Rear Tread | 72.60 in. |

Prices and content availability as shown are subject to change and should be treated as estimates only. Actual base vehicle, package and option pricing may vary from this estimate because of special local pricing, availability or pricing adjustments not reflected in the dealer's computer system. See salesperson for the most current information.

Note: Prices and content availability as shown are subject to change and should be treated as estimates only. Actual base vehicle, package and option pricing may vary from this estimate because of special local pricing, availability or pricing adjustments not reflected in the dealer's computer system. See salesperson for the most current information.

2021 F-750 Diesel Regular Cab Base (F7D)

Price Level: 120



Client Proposal

Prepared by:

Ed Miller

Office: 713-678-5007

Email: EMILLER@CHASTANGFORD.COM

Quote ID: GALSD21F7D

Date: 09/18/2020



Chastang Ford | 6200 N. Loop East, Houston, Texas, 770261936

Office: 713-678-5000 | Fax: 713-678-5001



Prepared by: Ed Miller
09/18/2020

Chastang Ford | 6200 N. Loop East Houston Texas | 770261936

2021 F-750 Diesel Regular Cab Base (F7D)

Price Level: 120 | Quote ID: GALSD21F7D

As Configured Vehicle

| Code | Description | MSRP |
|---------------------------------|---|-------------|
| Base Vehicle | | |
| F7D | Base Vehicle Price (F7D) | \$70,945.00 |
| Engines | | |
| 99C | 6.7L Power Stroke V8 Turbo Diesel - 270 HP @ 2400 RPM Includes Engine Exhaust Brake and manual regen capability. Torque: 700 ft.lbs. @ 1500 rpm. <i>Governed RPM: 3200. Includes CARB clean idle label - may be removed if un-necessary.</i> | STD |
| 425 | 50-State Emissions | N/C |
| 41H | Engine Block Heater, Phillips, 120 Volt/750 Watt | \$60.00 |
| Transmissions | | |
| 44G | Ford TorqShift HD 6-Speed Automatic - Double Overdrive, less PTO Provision, less Park Pawl | STD |
| 41A | Transmission Power Take-Off Provision w/LiveDrive Capability and Tow/Haul | \$895.00 |
| Front Wheels & Tires | | |
| 643 | Wheels, Front 22.5x8.25 White Powder Coated Steel, 10-Hole <i>(285.75MM BC) hub piloted, flanged nut, metric mount, 8.25 DC rims; with steel hubs.</i> | STD |
| T2B | Tires, Front Two 11R22.5G Goodyear Fuel Max RSA (497 rev/mile) | STD |
| Rear Wheels & Tires | | |
| 663 | Wheels, Rear 22.5x8.25 White Powder Coated Steel, 10-Hole <i>(285.75MM BC) hub piloted, flanged nut, metric mount, 8.25 DC rims; with steel hubs.</i> | STD |

Prices and content availability as shown are subject to change and should be treated as estimates only. Actual base vehicle, package and option pricing may vary from this estimate because of special local pricing, availability or pricing adjustments not reflected in the dealer's computer system. See salesperson for the most current information.

Note: Prices and content availability as shown are subject to change and should be treated as estimates only. Actual base vehicle, package and option pricing may vary from this estimate because of special local pricing, availability or pricing adjustments not reflected in the dealer's computer system. See salesperson for the most current information.



Prepared by: Ed Miller
09/18/2020

Chastang Ford | 6200 N. Loop East Houston Texas | 770261936

2021 F-750 Diesel Regular Cab Base (F7D)

Price Level: 120 | Quote ID: GALSD21F7D

As Configured Vehicle (cont'd)

| Code | Description | MSRP |
|----------------------------------|--|----------|
| R2B | Tires, Rear Four 11R22.5G Goodyear Fuel Max RSA (497 rev/mile) | STD |
| Brakes | | |
| 67H | Hydraulic Brake System - Bosch HydroMax w/Traction Control <i>Full power with automatic adjustment, 4-channel ABS antilock brake system. Includes 12" x 3" (Bosch) DSSA type rear axle mounted parking brake. Orscheln lever control, right of driver.</i> | STD |
| Front Axle and Suspension | | |
| 43N | 10,000 lb. Cap. Non-Driving - Dana E-1002I - I-Beam Type | STD |
| 61C | Taper-Leaf Springs, Parabolic - 10,000 lb. Cap <i>2-leaf, 62" x 3.15". Also includes, standard duty, dual, double acting shock absorbers.</i> | STD |
| Rear Axle and Suspension | | |
| 475 | 21,000 lb. Single Reduction - Open - Dana / Spicer 21060S <i>NOTE: When specifying an axle ratio, check performance guidelines for startability and gradeability.</i> | STD |
| 18P | Driveshaft Upgrade <i>A heavy duty drive line is optional. Heavy duty drive line components are required in more demanding applications, such as higher torque engines or deep reduction low gear(s). The heavier SPL-140 driveshaft is powertrain dependent and should be used when more durability is required by the vocation or customer.</i> | \$185.00 |
| 68R | Multi-Leaf Springs - 23,000 lb. Cap <i>11-leaf. Includes 2,000 lb auxiliary springs for load stabilization.</i> | \$230.00 |
| X6B | 6.17 Axle Ratio | N/C |
| Wheelbase | | |
| 260WB | 260" Wheelbase/186" CA/120" AF/419" OAL | \$965.00 |

Frame

Prices and content availability as shown are subject to change and should be treated as estimates only. Actual base vehicle, package and option pricing may vary from this estimate because of special local pricing, availability or pricing adjustments not reflected in the dealer's computer system. See salesperson for the most current information.

Note: Prices and content availability as shown are subject to change and should be treated as estimates only. Actual base vehicle, package and option pricing may vary from this estimate because of special local pricing, availability or pricing adjustments not reflected in the dealer's computer system. See salesperson for the most current information.



Prepared by: Ed Miller
09/18/2020

Chastang Ford | 6200 N. Loop East Houston Texas | 770261936

2021 F-750 Diesel Regular Cab Base (F7D)

Price Level: 120 | Quote ID: GALSD21F7D

As Configured Vehicle (cont'd)

| Code | Description | MSRP |
|--|--|----------|
| 535 | Single Channel - Straight 'C' 15.14 SM, 80,000 PSI <i>1,211,200 RBM. High strength low alloy steel. 10.250" x 3.092" x 0.375" (260.4mm x 78.5mm x 9.5mm).</i> | STD |
| 18D | Special Rating GVWR - Limited to 25,999 lb. GVWR | \$120.00 |
| Exhaust | | |
| 91G | Under Cab, Right Side Outlet, Switchback-Style <i>Single, horizontal muffler, right side, under cab, outside of frame rail with rear discharge.</i> | STD |
| Fuel Tanks | | |
| 65B | Fuel Tank - LH 50 Gallon Rectangular - Aluminum | STD |
| 12 | 12 Gal. Single Tank Fuel Fill. Mandatory Charge Applied, Based On Tank Selection | \$0.00 |
| Electrical / Alternator / Battery | | |
| STDALT | Extra Heavy Duty Alternator - 12-Volt, 200 Amp Denso SC5 | Included |
| 55M | Jump Start Stud - Remote Mounted | \$90.00 |
| STDBAT | Battery - Two 750 CCA, 1500 Total, Includes Steel Battery Box <i>12Volt, Motorcraft.</i> | STD |
| 962 | Daytime Running Lamps | \$45.00 |
| 16V | Voltmeter <i>Available in message center.</i> | \$100.00 |

Seats

Prices and content availability as shown are subject to change and should be treated as estimates only. Actual base vehicle, package and option pricing may vary from this estimate because of special local pricing, availability or pricing adjustments not reflected in the dealer's computer system. See salesperson for the most current information.

Note: Prices and content availability as shown are subject to change and should be treated as estimates only. Actual base vehicle, package and option pricing may vary from this estimate because of special local pricing, availability or pricing adjustments not reflected in the dealer's computer system. See salesperson for the most current information.



Prepared by: Ed Miller
09/18/2020

Chastang Ford | 6200 N. Loop East Houston Texas | 770261936

2021 F-750 Diesel Regular Cab Base (F7D)

Price Level: 120 | Quote ID: GALSD21F7D

As Configured Vehicle (cont'd)

| Code | Description | MSRP |
|----------------------|---|----------|
| 88L | 30/70 Air Ride Driver (Integral Air Pump) & Fixed 2-Passenger Bench - Vinyl | \$440.00 |
| Cab Interior | | |
| 600A | Preferred Equipment Package 600A <i>Includes:</i> - Bumper, Front - Black, Full Width - Wheel Seals, Front - Oil lubricated, SKF ScotSeal PlusXL Seals - Wheel Seals, Rear - Oil lubricated, SKF ScotSeal PlusXL Seals - Manual Regen Initiation - Driver Interface in Message Center - Engine Exhaust Brake - Extra Heavy Duty Alternator - 12-Volt, 200 Amp Denso SC5 - Painted Grille - Plastic - Lights - Roof Marker/Clearance - Amber Lenses, 5 Lights - Tow Hooks, Front (2) - Frame-Mounted, Painted Black - Four Body Builder Switches - Mounted in Center Instrument Panel <i>With connector access located in engine compartment. Amperages vary by switch: 10, 15, 25, 25.</i> - Floor Covering - Black Vinyl - Intelligent Oil Life Monitor - Steering Column - Tilt / Telescoping - Steering Wheel - Black PVC w/Integral Cruise Control Switches, includes Audio Controls - Body Builder Wiring - At Back of Cab, Combined <i>Includes sealed connectors for 2 ground circuits, with combined left/stop, combined right/stop, park lamps, back up lamps. Also includes 2 additional pass through wires to cab.</i> | N/C |
| 90P | Power Equipment Group - (Included in (90A) Appearance Group) <i>Includes power front side windows, power door locks and door trim panel.</i> | \$470.00 |
| 588 | Radio: AM/FM Stereo w/2 Speakers, USB input, Clock Display and Bluetooth | STD |
| Cab Exterior | | |
| 54C | Mirrors, Dual - Heated Rectangular, XL2020 - 102" Width <i>Integral spot mirror, sail type, manual fold, solid black finish.</i> | \$90.00 |
| 165 | Mud Flap Holder Without Flaps | \$95.00 |
| Miscellaneous | | |
| PAINT | Paint Type - Environmentally Friendly, "3 - Wet System" | STD |

Interior Colors

Prices and content availability as shown are subject to change and should be treated as estimates only. Actual base vehicle, package and option pricing may vary from this estimate because of special local pricing, availability or pricing adjustments not reflected in the dealer's computer system. See salesperson for the most current information.

Note: Prices and content availability as shown are subject to change and should be treated as estimates only. Actual base vehicle, package and option pricing may vary from this estimate because of special local pricing, availability or pricing adjustments not reflected in the dealer's computer system. See salesperson for the most current information.



Prepared by: Ed Miller
09/18/2020

Chastang Ford | 6200 N. Loop East Houston Texas | 770261936

2021 F-750 Diesel Regular Cab Base (F7D)

Price Level: 120 | Quote ID: GALSD21F7D

As Configured Vehicle (cont'd)

| Code | Description | MSRP |
|-----------------------|---|--------------------|
| E_01 | Gray | N/C |
| Primary Colors | | |
| YZ_01 | Oxford White | N/C |
| Upfit Options | | |
| 60-140 | INSTALL 2500 LBTOMMY GATE RAIL LIFT GATE | \$6,995.00 |
| Buy Board | Buy Board Fee <i>CONTRACT 601-19</i> | \$400.00 |
| 24 VAN | INSTALL A 24 FOOT VAN BODY | \$11,785.00 |
| SUBTOTAL | | \$93,910.00 |
| Destination Charge | | \$2,095.00 |
| TOTAL | | \$96,005.00 |

Prices and content availability as shown are subject to change and should be treated as estimates only. Actual base vehicle, package and option pricing may vary from this estimate because of special local pricing, availability or pricing adjustments not reflected in the dealer's computer system. See salesperson for the most current information.

Note: Prices and content availability as shown are subject to change and should be treated as estimates only. Actual base vehicle, package and option pricing may vary from this estimate because of special local pricing, availability or pricing adjustments not reflected in the dealer's computer system. See salesperson for the most current information.



Prepared by: Ed Miller
09/18/2020

Chastang Ford | 6200 N. Loop East Houston Texas | 770261936

2021 F-750 Diesel Regular Cab Base (F7D)

Price Level: 120 | Quote ID: GALSD21F7D

Pricing Summary - Single Vehicle

MSRP

Vehicle Pricing

| | |
|--------------------|--------------------|
| Base Vehicle Price | \$70,945.00 |
| Options & Colors | \$3,785.00 |
| Upfitting | \$19,180.00 |
| Destination Charge | \$2,095.00 |
| Subtotal | \$96,005.00 |

Pre-Tax Adjustments

| Code | Description | |
|--------------|-------------------------|--------------------|
| 01 ft | DISCOUNT AND CONCESSION | -\$17,046.00 |
| Total | | \$78,959.00 |

Customer Signature

Acceptance Date

Prices and content availability as shown are subject to change and should be treated as estimates only. Actual base vehicle, package and option pricing may vary from this estimate because of special local pricing, availability or pricing adjustments not reflected in the dealer's computer system. See salesperson for the most current information.

Note: Prices and content availability as shown are subject to change and should be treated as estimates only. Actual base vehicle, package and option pricing may vary from this estimate because of special local pricing, availability or pricing adjustments not reflected in the dealer's computer system. See salesperson for the most current information.



Prepared by: Ed Miller
09/18/2020

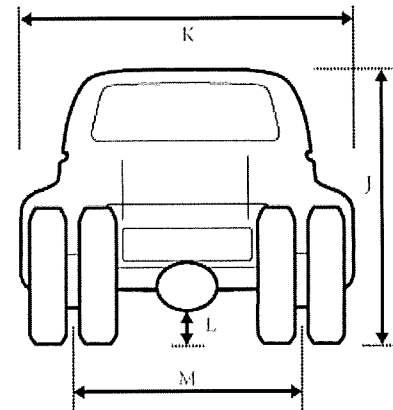
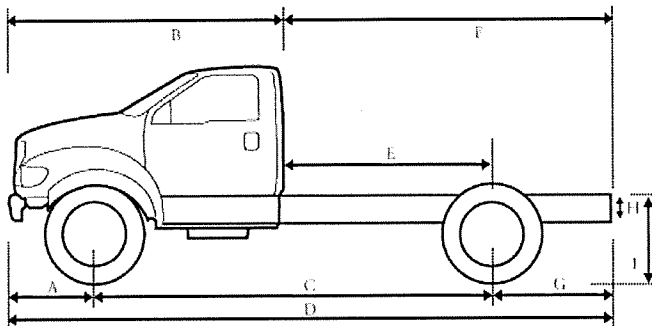
Chastang Ford | 6200 N. Loop East Houston Texas | 770261936

2021 F-750 Diesel Regular Cab Base (F7D)

Price Level: 120 | Quote ID: GALSD21F7D

Vehicle Dimension and Performance Summary

Performance predictions in this report represent an estimate of vehicle performance based on standard operating conditions. Variations in customer equipment, load configuration, ambient conditions, and/or operator driving techniques can cause significant variations in vehicle performance. These values are not representative of results that may be shown in actual dynamometer tests. This report should therefore be used as a guide for comparative vehicle performance.



Dimensions

| | | |
|---|-----------------------------------|------------|
| A | Front of Bumper to Front Axle | 39.00 in. |
| B | Front Bumper to Back of Cab (BBC) | 113.00 in. |
| C | Wheelbase (WB) | 260.00 in. |
| D | Overall Length (OAL) | 419.00 in. |
| E | Back of Cab to Rear Axle (CA) | 186.00 in. |
| F | Back of Cab to End of Frame | 306.00 in. |
| G | Rear Axle to End of Frame (AF) | 120.00 in. |
| H | Frame Section Height | 10.30 in. |
| I | Rear Frame Height Unloaded | 38.20 in. |
| I | Rear Frame Height Loaded | 36.80 in. |
| J | Cab Height | 94.30 in. |
| K | Body Width | 96.70 in. |
| L | Maximum Ground Clearance | N/A |
| L | Minimum Ground Clearance | N/A |
| M | Front Tread | 83.80 in. |
| M | Rear Tread | 72.60 in. |

Prices and content availability as shown are subject to change and should be treated as estimates only. Actual base vehicle, package and option pricing may vary from this estimate because of special local pricing, availability or pricing adjustments not reflected in the dealer's computer system. See salesperson for the most current information.

Note: Prices and content availability as shown are subject to change and should be treated as estimates only. Actual base vehicle, package and option pricing may vary from this estimate because of special local pricing, availability or pricing adjustments not reflected in the dealer's computer system. See salesperson for the most current information.



Prepared by: Ed Miller
09/18/2020

Chastang Ford | 6200 N. Loop East Houston Texas | 770261936

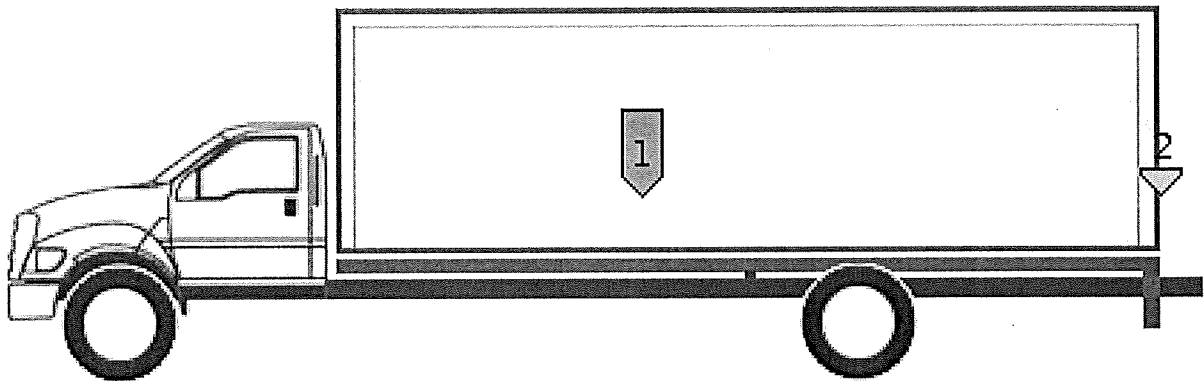
2021 F-750 Diesel Regular Cab Base (F7D)

Price Level: 120 | Quote ID: GALSD21F7D

Vehicle Dimension and Performance Summary (cont'd)

Body Specs

| | |
|-----------------------------------|------------|
| Truck body style: | Van |
| Cab to body gap: | 3.00 in. |
| Body length: | 24.00 ft |
| Body tare weight: | 3,600 lbs |
| Body width: | 102 in. |
| Body height from ground: | 150 in. |
| Body Centre gravity (from front): | 144.00 in. |



Prices and content availability as shown are subject to change and should be treated as estimates only. Actual base vehicle, package and option pricing may vary from this estimate because of special local pricing, availability or pricing adjustments not reflected in the dealer's computer system. See salesperson for the most current information.

Note: Prices and content availability as shown are subject to change and should be treated as estimates only. Actual base vehicle, package and option pricing may vary from this estimate because of special local pricing, availability or pricing adjustments not reflected in the dealer's computer system. See salesperson for the most current information.



Prepared by: Ed Miller
09/18/2020

Chastang Ford | 6200 N. Loop East Houston Texas | 770261936

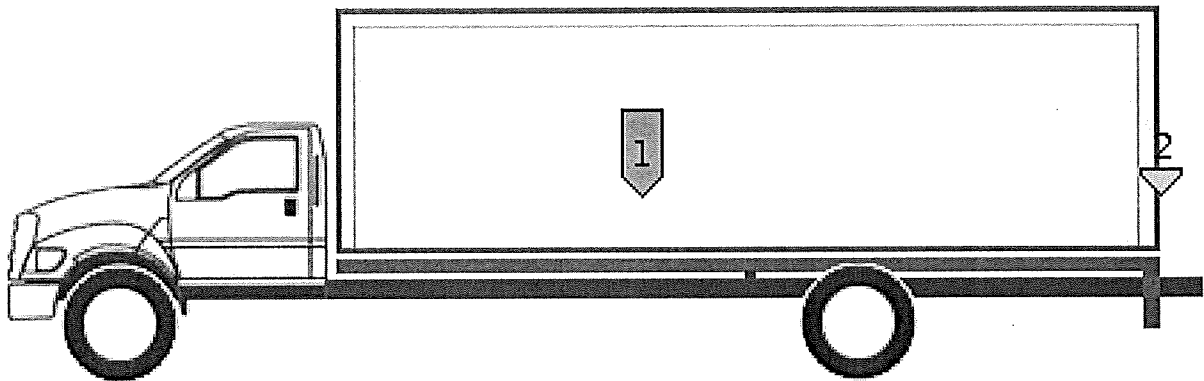
2021 F-750 Diesel Regular Cab Base (F7D)

Price Level: 120 | Quote ID: GALSD21F7D

Vehicle Dimension and Performance Summary (cont'd)

Body Specs

| | |
|-----------------------------------|------------|
| Truck body style: | Van |
| Cab to body gap: | 3.00 in. |
| Body length: | 24.00 ft |
| Body tare weight: | 3,600 lbs |
| Body width: | 102 in. |
| Body height from ground: | 150 in. |
| Body Centre gravity (from front): | 144.00 in. |



Prices and content availability as shown are subject to change and should be treated as estimates only. Actual base vehicle, package and option pricing may vary from this estimate because of special local pricing, availability or pricing adjustments not reflected in the dealer's computer system. See salesperson for the most current information.

Note: Prices and content availability as shown are subject to change and should be treated as estimates only. Actual base vehicle, package and option pricing may vary from this estimate because of special local pricing, availability or pricing adjustments not reflected in the dealer's computer system. See salesperson for the most current information.



Prepared by: Ed Miller
09/18/2020

Chastang Ford | 6200 N. Loop East Houston Texas | 770261936

2021 F-750 Diesel Regular Cab Base (F7D)

Price Level: 120 | Quote ID: GALSD21F7D

Vehicle Dimension and Performance Summary (cont'd)

Weight

| GVW | Front Axle | Rear Axle | Totals |
|-------------------------------|-------------------|-------------------|-------------------|
| Chassis | 6,325 lbs | 3,792 lbs | 10,117 lbs |
| Body | 540 lbs | 3,060 lbs | 3,600 lbs |
| Occupants Weight | 200 lbs | 100 lbs | 300 lbs |
| 1 Max Payload - (Max Payload) | 3,257 lbs | 7,925 lbs | 11,182 lbs |
| 2 Point Load - (Point Load) | -322 lbs | 1,122 lbs | 800 lbs |
| TOTAL | 10,000 lbs | 15,999 lbs | 25,999 lbs |

| Ratings | Front Axle | Rear Axle | GVWR |
|------------------|-------------------|-------------------|-------------------|
| GAWR | 10,000 lbs | 21,000 lbs | 25,999 lbs |
| Wheels/Tires | 12,350 lbs | 23,360 lbs | |
| Suspension | 10,000 lbs | 23,000 lbs | |
| Axle | 10,000 lbs | 21,000 lbs | |
| Legal Axle Limit | 0 lbs | 0 lbs | |

Front And Rear GAWR Total Will Exceed Overall GVWR

Prices and content availability as shown are subject to change and should be treated as estimates only. Actual base vehicle, package and option pricing may vary from this estimate because of special local pricing, availability or pricing adjustments not reflected in the dealer's computer system. See salesperson for the most current information.

Note: Prices and content availability as shown are subject to change and should be treated as estimates only. Actual base vehicle, package and option pricing may vary from this estimate because of special local pricing, availability or pricing adjustments not reflected in the dealer's computer system. See salesperson for the most current information.



Prepared by: Ed Miller
09/18/2020

Chastang Ford | 6200 N. Loop East Houston Texas | 770261936

2021 F-750 Diesel Regular Cab Base (F7D)

Price Level: 120 | Quote ID: GALSD21F7D

Vehicle Dimension and Performance Summary (cont'd)

Start, Grade and Speed

Shift Indicator

Vehicle equipped without Park Pawl. Shift indicator will display RNDM.

| Start | Ratio | Desired | Calculated |
|---|-------|---------|------------|
| Start grade capability in 1st gear | 3.97 | 15.00 % | 28.36 % |
| Start grade capability in reverse | 3.13 | 15.00 % | 22.33 % |
| Grade | Ratio | Desired | Calculated |
| Maximum grade in 4th gear | 1.15 | 3.00 % | 8.87 % |
| Maximum grade in 5th gear | 0.86 | 3.00 % | 6.62 % |
| Maximum grade in 6th gear | 0.67 | 3.00 % | 5.20 % |
| Speed | | Desired | Calculated |
| Top Speed (level grade) | | 75 mph | 93 mph |
| <i>To meet your requirement you need a maximum axle ratio of 7.64</i> | | | |
| Top Speed on 3.0% grade | | 55 mph | |
| <i>To meet your requirement you need a maximum of 166 hp</i> | | | |
| Cruise Speed | | 60 mph | 67 mph |
| Engine RPM at desired cruise speed | | | 2,067 rpm |

Variables in Use

| | | | |
|-----------------------------|------------------------|--------------------|-----------------|
| Rear axle ratio: | 6.17/6.17 | Governed RPM: | 3,200 rpm |
| Tire size: | 11R22.5 (497 rev/mile) | Frontal Area: | 57.28 Sq.Ft. |
| Gross Vehicle Weight (GVW): | 25,999 lbs | Cruising RPM | 2,300 rpm |
| Clutch engagement torque: | 350 ft.lbs. | Worst road surface | Typical Highway |
| Torque conversion ratio: | 1.85 | Final Drive Ratio: | 0.67 |
| Peak engine torque: | 700 ft.lbs. | Drag Coefficient | 0.80 |
| Engine Power: | 270 hp @ 2,400 rpm | | |

Prices and content availability as shown are subject to change and should be treated as estimates only. Actual base vehicle, package and option pricing may vary from this estimate because of special local pricing, availability or pricing adjustments not reflected in the dealer's computer system. See salesperson for the most current information.

Note: Prices and content availability as shown are subject to change and should be treated as estimates only. Actual base vehicle, package and option pricing may vary from this estimate because of special local pricing, availability or pricing adjustments not reflected in the dealer's computer system. See salesperson for the most current information.



Prepared by: Ed Miller
09/18/2020

Chastang Ford | 6200 N. Loop East Houston Texas | 770261936

2021 F-750 Diesel Regular Cab Base (F7D)

Price Level: 120 | Quote ID: GALSD21F7D

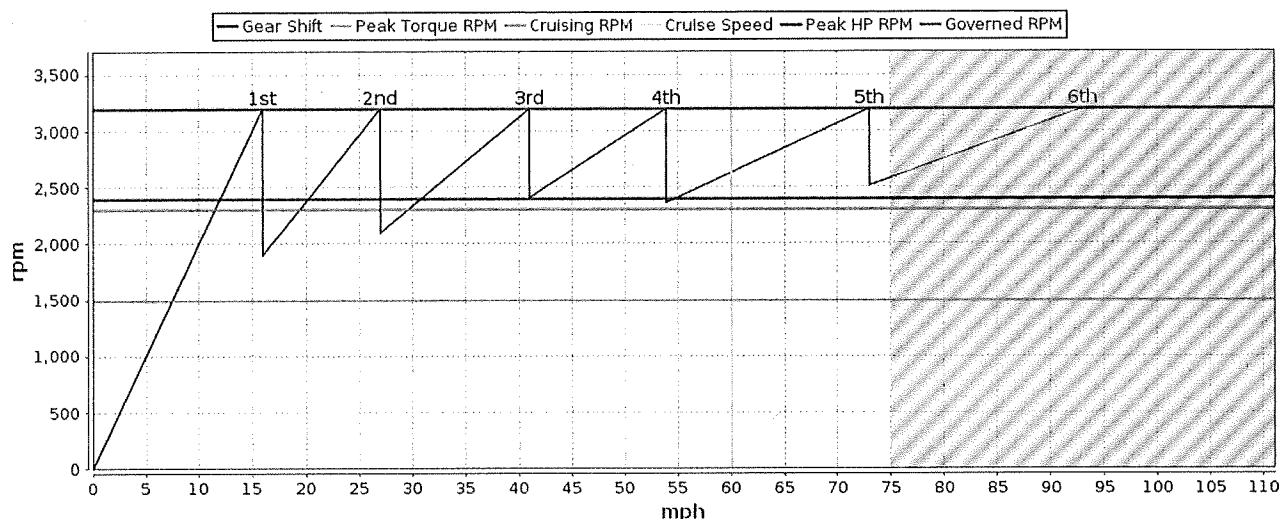
Vehicle Dimension and Performance Summary (cont'd)

Shift Chart

Shift Chart displays mathematical geared speed.

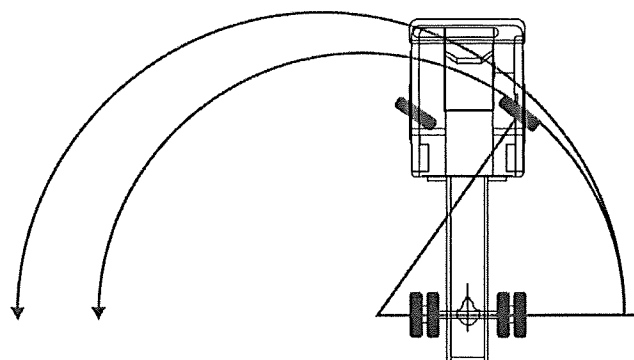
Diesel engines use Governed RPM for shift points.

Gas engines use Peak Torque RPM for shift points.



Turning Radius

Turning radius to curb: 33.79 ft
 Turning radius to bumper: 35.50 ft



Prices and content availability as shown are subject to change and should be treated as estimates only. Actual base vehicle, package and option pricing may vary from this estimate because of special local pricing, availability or pricing adjustments not reflected in the dealer's computer system. See salesperson for the most current information.

Note: Prices and content availability as shown are subject to change and should be treated as estimates only. Actual base vehicle, package and option pricing may vary from this estimate because of special local pricing, availability or pricing adjustments not reflected in the dealer's computer system. See salesperson for the most current information.



Prepared by: Ed Miller
09/18/2020

Chastang Ford | 6200 N. Loop East Houston Texas | 770261936

2021 F-750 Diesel Regular Cab Base (F7D)

Price Level: 120 | Quote ID: GALSD21F7D

Selected Equip & Specs

Dimensions

- * **Exterior length: 419.0"**
- Exterior width: 96.7"
- * **Wheelbase: 260.0"**
- Rear track: 72.6"
- Front legroom: 41.4"
- Front hiproom: 67.6"
- * **Cab to axle: 186.0"**
- Exterior height: 94.3"
- Front track: 83.8"
- Rear tire outside width: 96.0"
- Front headroom: 40.7"
- Front shoulder room: 68.0"

Powertrain

- 270hp 6.7L OHV 32 valve intercooled turbo V-8 engine with diesel direct injection
- federal
- Rear-wheel drive
- Fuel Economy Highway: N/A
- Fuel/water separator
- Standard rear differential
- Right mounted horizontal tailpipe
- Recommended fuel : diesel
- 6 speed automatic transmission with overdrive
- Fuel Economy Cty: N/A
- 50.0 gal. rectangular Left front fuel tank
- * **Transmission PTO provision**
- Right mounted horizontal muffler

Suspension/Handling

- Front non-independent leaf spring suspension
- Hydraulic power-assist re-circulating ball Steering
- 11.0R22.5 AS front and rear tires
- Rubber auxiliary rear springs
- Rear rigid axle leaf spring suspension
- Front and rear 22.5 x 8.25 wheels
- Dual rear wheels

Body Exterior

- 2 doors
- Black door mirrors
- Side steps
- Straight front bumper ends
- Front and rear 22.5 x 8.25 white steel wheels with 10 wheel studs
- * **Driver and passenger heated, manual folding door mirrors**
- Black bumpers
- Clearcoat paint
- Hood mounted grille
- 2 front tow hook(s)

Convenience

- Manual air conditioning
- * **Power front windows**
- * **Power door locks**
- Manual telescopic steering wheel
- Cruise control with steering wheel controls
- * **Driver and passenger 1-touch down**
- Manual tilt steering wheel
- Wireless phone connectivity

Prices and content availability as shown are subject to change and should be treated as estimates only. Actual base vehicle, package and option pricing may vary from this estimate because of special local pricing, availability or pricing adjustments not reflected in the dealer's computer system. See salesperson for the most current information.

Note: Prices and content availability as shown are subject to change and should be treated as estimates only. Actual base vehicle, package and option pricing may vary from this estimate because of special local pricing, availability or pricing adjustments not reflected in the dealer's computer system. See salesperson for the most current information.



Prepared by: Ed Miller
09/18/2020

Chastang Ford | 6200 N. Loop East Houston Texas | 770261936

2021 F-750 Diesel Regular Cab Base (F7D)

Price Level: 120 | Quote ID: GALSD21F7D

Selected Equip & Specs (cont'd)

- Front cupholders
- Dual electric horn
- * **Driver and passenger door bins**
- Passenger visor mirror
- Automatic gearshift steering column lever
- Upfitter switches

Seats and Trim

- * **Seating capacity of 3**
- Fixed passenger seat
- * **Bucket driver seat, two person bench passenger seat**
- * **High back seats**
- Driver seat with 4 way direction control, passenger seat with 2 way direction control
- * **Fixed headrests**
- Fixed driver seat
- * **Driver centre front armrest**
- * **Driver seat folding back,**
- * **Driver seat air suspension,**
- Manual fore/aft seats

Entertainment Features

- AM/FM stereo radio
- Steering wheel mounted radio controls
- Streaming audio
- Auxiliary audio input
- 2 speakers
- Fixed antenna

Lighting, Visibility and Instrumentation

- Halogen aero-composite headlights
- Variable intermittent front windshield wipers
- Front reading lights
- * **Voltmeter**
- Trip computer
- RNDM
- Fully automatic headlights
- Light tinted windows
- Tachometer
- Oil pressure gauge
- Trip odometer

Safety and Security

- 4-wheel ABS brakes
- Hydraulic disc brakes
- * **Power door locks**
- Hill hold control
- ABS traction control
- With stolen vehicle tracking system

Dimensions

General Weights

| | | | |
|---------------|--------------------|------------|------------|
| * Curb | 10,117 lbs. | Front GAWR | 10000 lbs. |
| Rear GAWR | 21000 lbs. | GVWR | 25999 lbs. |
| GCWR | 50000 lbs. | | |

Prices and content availability as shown are subject to change and should be treated as estimates only. Actual base vehicle, package and option pricing may vary from this estimate because of special local pricing, availability or pricing adjustments not reflected in the dealer's computer system. See salesperson for the most current information.

Note: Prices and content availability as shown are subject to change and should be treated as estimates only. Actual base vehicle, package and option pricing may vary from this estimate because of special local pricing, availability or pricing adjustments not reflected in the dealer's computer system. See salesperson for the most current information.



Prepared by: Ed Miller
09/18/2020

Chastang Ford | 6200 N. Loop East Houston Texas | 770261936

2021 F-750 Diesel Regular Cab Base (F7D)

Price Level: 120 | Quote ID: GALSD21F7D

Selected Equip & Specs (cont'd)

Front Weights

| | | | |
|---------------------|-------------|---------------------------|-------------|
| * Front curb weight | 6,325 lbs. | Front axle capacity | 10,000 lbs. |
| Front spring rating | 10,000 lbs. | Front tire/wheel capacity | 12,350 lbs. |

Rear Weights

| | | | |
|----------------------|-------------|--------------------------|-------------|
| * Rear curb weight | 3,792 lbs. | Rear axle capacity | 21,000 lbs. |
| * Rear spring rating | 23,000 lbs. | Rear tire/wheel capacity | 23,360 lbs. |

Fuel Tank type

| | |
|-------------------------------|------------|
| Left front Fuel tank capacity | 50.01 gal. |
|-------------------------------|------------|

Front Frame

| | | | |
|---------------|------|-----------------|------|
| Height loaded | 35 " | Height unloaded | 37 " |
|---------------|------|-----------------|------|

Rear Frame

| | | | |
|-----------------|------|-----------------|------|
| * Height loaded | 37 " | Height unloaded | 38 " |
|-----------------|------|-----------------|------|

Front And Rear GAWR Total Will Exceed Overall GVWR

Powertrain

Engine Type

| | | | |
|---------------------|-------------------------|------------------|-------------|
| Block material | Iron | Cylinders | V-8 |
| Head material | Aluminum | Ignition | Compression |
| Injection | Diesel direct injection | Liters | 6.7L |
| Orientation | Longitudinal | Recommended fuel | Diesel |
| Valves per cylinder | 4 | Valvetrain | OHV |
| Forced induction | Intercooled turbo | | |

Engine Spec

| | | | |
|--------------|------------|-------------------|--------|
| Bore | 3.90" | Compression ratio | 16.2:1 |
| Displacement | 406 cu.in. | Stroke | 4.25" |

Engine Power

| | | | |
|--------------|--------------------|--------|------------------------|
| Output | 270 HP @ 2,400 RPM | Torque | 700 ft.-lb @ 1,500 RPM |
| Governed RPM | 3,200 | | |

Alternator

| | | | |
|------|----|------|-----|
| Type | HD | Amps | 200 |
|------|----|------|-----|

Battery

| | | | |
|--------------------|-------|----------|---------------|
| Cold cranking amps | 1,500 | Location | Forward right |
| Step | Yes | Type | Dual |

Prices and content availability as shown are subject to change and should be treated as estimates only. Actual base vehicle, package and option pricing may vary from this estimate because of special local pricing, availability or pricing adjustments not reflected in the dealer's computer system. See salesperson for the most current information.

Note: Prices and content availability as shown are subject to change and should be treated as estimates only. Actual base vehicle, package and option pricing may vary from this estimate because of special local pricing, availability or pricing adjustments not reflected in the dealer's computer system. See salesperson for the most current information.



Prepared by: Ed Miller

09/18/2020

Chastang Ford | 6200 N. Loop East Houston Texas | 770261936

2021 F-750 Diesel Regular Cab Base (F7D)

Price Level: 120 | Quote ID: GALSD21F7D

Selected Equip & Specs (cont'd)

Engine Extras

* Block heater Yes

Transmission

| | | | |
|--------------------|-----------|---------|-----|
| Electronic control | Yes | Lock-up | Yes |
| Overdrive | Yes | Speed | 6 |
| Type | Automatic | | |

Transmission Gear Ratios

| | | | |
|---------------------|-------|-----|-------|
| 1st | 3.974 | 2nd | 2.318 |
| 3rd | 1.516 | 4th | 1.149 |
| 5th | 0.858 | 6th | 0.674 |
| Reverse Gear ratios | 3.128 | | |

Transmission Torque Converter

Stall ratio 1.85

Transmission Extras

| | | | |
|------------------------|--------------|--------------------------|-----|
| Driver selectable mode | Yes | Sequential shift control | Yes |
| Oil cooler | Regular duty | * PTO provision | Yes |

Drive Type

Type Rear-wheel

Drive Feature

Traction control ABS

Drive Axle

* Ratio 6.17

Exhaust

| | | | |
|----------|------------------|-------------|--------|
| Material | Aluminized steel | System type | Single |
|----------|------------------|-------------|--------|

Emissions

CARB Federal

Engine Retarder

Type Yes

Driveability

Brakes

| | | | |
|------|----------------|--------------|----------------|
| ABS | 4-wheel | ABS channels | 4 |
| Type | Hydraulic disc | Vented discs | Front and rear |

Prices and content availability as shown are subject to change and should be treated as estimates only. Actual base vehicle, package and option pricing may vary from this estimate because of special local pricing, availability or pricing adjustments not reflected in the dealer's computer system. See salesperson for the most current information.

Note: Prices and content availability as shown are subject to change and should be treated as estimates only. Actual base vehicle, package and option pricing may vary from this estimate because of special local pricing, availability or pricing adjustments not reflected in the dealer's computer system. See salesperson for the most current information.



Prepared by: Ed Miller
09/18/2020

Chastang Ford | 6200 N. Loop East Houston Texas | 770261936

2021 F-750 Diesel Regular Cab Base (F7D)

Price Level: 120 | Quote ID: GALSD21F7D

Selected Equip & Specs (cont'd)

Brake Assistance

Hill hold control Yes

Suspension Control

Ride Regular

Front Suspension

Independence Non-independent Type Leaf

Front Spring

Type Tapered leaf Grade Regular

Front Shocks

Type Regular

Rear Suspension

Independence Rigid axle Type Leaf

Rear Spring

Type Multi-leaf Grade Regular

Auxiliary Rubber

Steering

Activation Hydraulic power-assist Type Re-circulating ball

Steering Specs

of wheels 2

Exterior

Front Wheels

Diameter 22.5" Width 8.25"

Rear Wheels

Diameter 22.5" Width 8.25"

Dual Yes

Front Tires

Aspect 82 Diameter 22.5"

Sidewalls BSW Tread AS

Width 11.0" LT load rating G

RPM 497

Rear Tires

Aspect 82 Diameter 22.5"

Prices and content availability as shown are subject to change and should be treated as estimates only. Actual base vehicle, package and option pricing may vary from this estimate because of special local pricing, availability or pricing adjustments not reflected in the dealer's computer system. See salesperson for the most current information.

Note: Prices and content availability as shown are subject to change and should be treated as estimates only. Actual base vehicle, package and option pricing may vary from this estimate because of special local pricing, availability or pricing adjustments not reflected in the dealer's computer system. See salesperson for the most current information.



Prepared by: Ed Miller
09/18/2020

Chastang Ford | 6200 N. Loop East Houston Texas | 770261936

2021 F-750 Diesel Regular Cab Base (F7D)

Price Level: 120 | Quote ID: GALSD21F7D

Selected Equip & Specs (cont'd)

| | | | |
|-----------|-------|----------------|----|
| Sidewalls | BSW | Tread | AS |
| Width | 11.0" | LT load rating | G |
| RPM | 497 | | |

Wheels

| | | | |
|-----------------------------------|---------------|-------------------------------------|------------|
| Front track | 83.8" | Rear track | 72.6" |
| * Turning radius (to curb) | 34' | * Turning radius (to bumper) | 35' |
| * Wheelbase | 260.0" | Rear tire outside width | 96.0" |

Body Features

| | | | |
|---------------------|----------------------------|-----------------------------|---------------------|
| Front splash guards | Yes | * Rear splash guards | Holders only |
| Body material | Composite/galvanized steel | Side steps | Yes |
| Front tow hook(s) | 2 | | |

Body Doors

| | |
|------------|---|
| Door count | 2 |
|------------|---|

Exterior Dimensions

| | | | |
|-------------------------------|---------------|------------------------|---------------|
| * Length | 419.0" | Body width | 96.7" |
| Body height | 94.3" | * Cab to axle | 186.0" |
| * Axle to end of frame | 120.0" | Frame section modulus | 15.1cu.in. |
| Frame yield strength (psi) | 80000.0 | Frame rail depth | 10.3" |
| Frame rail width | 3.1" | Frame rail thickness | 0.4" |
| Max RBM (in.-lbs.) | 1,275,200.0 | Frame rail section | 9.5" |
| Front bumper to Front axle | 39.0" | Nominal RBM (in.-lbs.) | 1,211,200.0 |

Seating

Passenger Capacity

| | |
|-------------------|----------|
| * Capacity | 3 |
|-------------------|----------|

Driver Seat

| | | | |
|-----------------------|-------------|---------------------|------------|
| Type | Bucket | Back | Folding |
| * Back type | High | * Suspension | Air |
| Way direction control | 4 | Fore/aft | Manual |

Driver Headrest

| | |
|---------------|--------------|
| * Type | Fixed |
|---------------|--------------|

Passenger Seat

| | | | |
|---------------|-------------------------|--------------------|-------------|
| * Type | Two person bench | * Back type | High |
|---------------|-------------------------|--------------------|-------------|

Prices and content availability as shown are subject to change and should be treated as estimates only. Actual base vehicle, package and option pricing may vary from this estimate because of special local pricing, availability or pricing adjustments not reflected in the dealer's computer system. See salesperson for the most current information.

Note: Prices and content availability as shown are subject to change and should be treated as estimates only. Actual base vehicle, package and option pricing may vary from this estimate because of special local pricing, availability or pricing adjustments not reflected in the dealer's computer system. See salesperson for the most current information.



Prepared by: Ed Miller
09/18/2020

Chastang Ford | 6200 N. Loop East Houston Texas | 770261936

2021 F-750 Diesel Regular Cab Base (F7D)

Price Level: 120 | Quote ID: GALSD21F7D

Selected Equip & Specs (cont'd)

Way direction control 2 Fore/aft Manual

Passenger Headrest

* Type Fixed

Front Armrest

Driver Yes * Centre Yes

Front Seat Trim

Material Vinyl Back material Carpet

Convenience

AC And Heat Type

Air conditioning Manual

Audio System

Auxiliary audio input Yes Radio AM/FM stereo
Radio grade Regular Seek-scan Yes

Audio Speakers

Speaker type Regular Speakers 2

Audio Controls

Steering wheel controls Yes Streaming audio Bluetooth yes

Audio Antenna

Type Fixed

Cruise Control

Cruise control With steering wheel controls

Convenience Features

12V DC power outlet 2 Wireless phone connectivity Bluetooth
Horn Dual electric Upfitter switches Yes

Door Lock Activation

* Type Power

Instrumentation Type

Display Analog

Instrumentation Gauges

Tachometer Yes Oil pressure Yes
Engine temperature Yes * Voltmeter Yes

Prices and content availability as shown are subject to change and should be treated as estimates only. Actual base vehicle, package and option pricing may vary from this estimate because of special local pricing, availability or pricing adjustments not reflected in the dealer's computer system. See salesperson for the most current information.

Note: Prices and content availability as shown are subject to change and should be treated as estimates only. Actual base vehicle, package and option pricing may vary from this estimate because of special local pricing, availability or pricing adjustments not reflected in the dealer's computer system. See salesperson for the most current information.



Prepared by: Ed Miller
09/18/2020

Chastang Ford | 6200 N. Loop East Houston Texas | 770261936

2021 F-750 Diesel Regular Cab Base (F7D)

Price Level: 120 | Quote ID: GALSD21F7D

Selected Equip & Specs (cont'd)

| | | | |
|---------------------------------|-----------------------|-------------------------|--------|
| Transmission fluid temp | Yes | Engine hour meter | Yes |
| <i>Instrumentation Warnings</i> | | | |
| Battery | Yes | Lights on | Yes |
| Key | Yes | Service interval | Yes |
| Brake fluid | Yes | Transmission fluid temp | Yes |
| <i>Instrumentation Displays</i> | | | |
| Clock | In-radio display | | |
| <i>Instrumentation Feature</i> | | | |
| Trip computer | Yes | Trip odometer | Yes |
| Shift indicator | RNDM | | |
| <i>Steering Wheel Type</i> | | | |
| Material | Urethane | Tilting | Manual |
| Telescoping | Manual | | |
| <i>Front Side Windows</i> | | | |
| * Window 1st row activation | Power | | |
| <i>Window Features</i> | | | |
| * 1-touch down | Driver and passenger | Tinted | Light |
| <i>Front Windshield</i> | | | |
| Wiper | Variable intermittent | | |
| <i>Rear Windshield</i> | | | |
| Window | Fixed | | |
| <i>Automatic Gearshift</i> | | | |
| Location | Steering column lever | | |

Interior

| | | | |
|------------------------|------|----------|--------------|
| <i>Passenger Visor</i> | | | |
| Mirror | Yes | | |
| <i>Headliner</i> | | | |
| Coverage | Full | Material | Cloth |
| <i>Floor Trim</i> | | | |
| Coverage | Full | Covering | Vinyl/rubber |
| <i>Trim Feature</i> | | | |

Prices and content availability as shown are subject to change and should be treated as estimates only. Actual base vehicle, package and option pricing may vary from this estimate because of special local pricing, availability or pricing adjustments not reflected in the dealer's computer system. See salesperson for the most current information.

Note: Prices and content availability as shown are subject to change and should be treated as estimates only. Actual base vehicle, package and option pricing may vary from this estimate because of special local pricing, availability or pricing adjustments not reflected in the dealer's computer system. See salesperson for the most current information.



Prepared by: Ed Miller
09/18/2020

Chastang Ford | 6200 N. Loop East Houston Texas | 770261936

2021 F-750 Diesel Regular Cab Base (F7D)

Price Level: 120 | Quote ID: GALSD21F7D

Selected Equip & Specs (cont'd)

| | | | |
|-----------------------|----------|--------------------------|-----|
| Gear shifter material | Urethane | | |
| <i>Lighting</i> | | | |
| Dome light type | Delay | Front reading | Yes |
| Variable IP lighting | Yes | | |
| <i>Storage</i> | | | |
| * Driver door bin | Yes | Front Beverage holder(s) | Yes |
| Glove box | Yes | * Passenger door bin | Yes |
| Instrument panel | Bin | Dashboard | Yes |
| <i>Legroom</i> | | | |
| Front | 41.4" | | |
| <i>Headroom</i> | | | |
| Front | 40.7" | | |
| <i>Hip Room</i> | | | |
| Front | 67.6" | | |
| <i>Shoulder Room</i> | | | |
| Front | 68.0" | | |

Prices and content availability as shown are subject to change and should be treated as estimates only. Actual base vehicle, package and option pricing may vary from this estimate because of special local pricing, availability or pricing adjustments not reflected in the dealer's computer system. See salesperson for the most current information.

Note: Prices and content availability as shown are subject to change and should be treated as estimates only. Actual base vehicle, package and option pricing may vary from this estimate because of special local pricing, availability or pricing adjustments not reflected in the dealer's computer system. See salesperson for the most current information.



Prepared by: Ed Miller
09/18/2020

Chastang Ford | 6200 N. Loop East Houston Texas | 770261936

2021 F-750 Diesel Regular Cab Base (F7D)

Price Level: 120 | Quote ID: GALSD21F7D

Warranty

Standard Warranty

Basic

| | | | |
|----------|-----------------|--------|-----------|
| Distance | Unlimited miles | Months | 24 months |
|----------|-----------------|--------|-----------|

Powertrain

| | | | |
|----------|-----------------|--------|-----------|
| Distance | Unlimited miles | Months | 24 months |
|----------|-----------------|--------|-----------|

Corrosion Perforation

| | | | |
|----------|-----------------|--------|-----------|
| Distance | Unlimited miles | Months | 36 months |
|----------|-----------------|--------|-----------|

Roadside Assistance

| | | | |
|----------|-----------------|--------|-----------|
| Distance | Unlimited miles | Months | 24 months |
|----------|-----------------|--------|-----------|

Diesel Engine

| | | | |
|----------|---------------|--------|-----------|
| Distance | 250,000 miles | Months | 60 months |
|----------|---------------|--------|-----------|

Transmission

| | | | |
|----------|---------------|--------|-----------|
| Distance | 250,000 miles | Months | 60 months |
|----------|---------------|--------|-----------|

Frame Rail

| | | | |
|----------|-----------------|--------|-----------|
| Distance | Unlimited miles | Months | 60 months |
|----------|-----------------|--------|-----------|

Prices and content availability as shown are subject to change and should be treated as estimates only. Actual base vehicle, package and option pricing may vary from this estimate because of special local pricing, availability or pricing adjustments not reflected in the dealer's computer system. See salesperson for the most current information.

Note: Prices and content availability as shown are subject to change and should be treated as estimates only. Actual base vehicle, package and option pricing may vary from this estimate because of special local pricing, availability or pricing adjustments not reflected in the dealer's computer system. See salesperson for the most current information.

November 5, 2020

Sent via email to: emiller@chastangford.com

Ed Miller
Chastang Enterprises, Inc.
6200 North Loop East
Houston TX 77026

Re: Vehicles, Heavy Duty Trucks, Police Motorcycles, Parts, and Service Labor
BuyBoard Contract 601-19

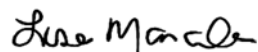
The Local Government Purchasing Cooperative (BuyBoard) awarded your company a contract under Vehicles, Heavy Duty Trucks, Police Motorcycles, Parts, and Service Labor, Contract 601-19 effective December 1, 2019 through November 30, 2020 with two possible one-year renewals. At this time, the BuyBoard is renewing your contract through November 30, 2021.

All discounts, terms, and conditions of your contract will remain the same. If you agree to this renewal, there is nothing you need to do. However, if you do not agree to this renewal, you must notify me via email at lisa.maraden@tasb.org prior to the start of the renewal term.

Reminder: Once a BuyBoard contract is awarded, vendors must generate a minimum of \$15,000 annually or they may not be offered a contract renewal.

If you have questions or comments concerning this renewal, please contact me as soon as possible at lisa.maraden@tasb.org. We appreciate your interest in The Local Government Purchasing Cooperative.

Sincerely,



Lisa Maraden
Contract Administrator

1st renewal v.02.13.2020

DEALER 52E 909

VIN 1FDWF7DE4KDF12522

| | Suggested Retail Price | Invoice Price |
|------------------------------------|------------------------|---------------|
| F75E REGULAR CAB DOCK HGT | 69455 00 | 60553 00 |
| 260" WHEELBASE | 965 00 | 852 00 |
| 2019 MODEL YEAR | | |
| YZ OXFORD WHITE | | |
| GE STEEL GRAY VINYL 30/70 | | |
| PREFERRED EQUIPMENT PKG.600A | | |
| .SINGLE, 21K CAP OPEN | | |
| .ENGINE EXHAUST BRAKE | | |
| .FUEL TANK - 50 GALS ALUMINUM | | |
| .REAR SEAT DELETE | | |
| .ARGENT GRILLE | | |
| .AIR CONDITIONING | | |
| .AUXILIARY SWITCH (4) | | |
| .PT WH 22.5X8.25 10H PWD CT DS | | |
| .RR WH 22.5X8.25 10H PT STL DS | | |
| 99E 6.7L POWER STROKE DSL 300 HP | 1995 00 | 1761 00 |
| .6 SPEED AUTO TRANS DSL | | |
| TCG GDYR 11R22.5G ENDURAM RSA | NC | NC |
| X6D 6.50 AXLE RATIO | NC | NC |
| 15V VOLTMETER | 100 00 | 88 00 |
| 163 RP MARKER/CLRNC LIGHTS AMBER | NC | NC |
| 17M BACKUP ALARM, ELECTRIC | 110 00 | 97 00 |
| 18D DE-RATE GVWR TO 25,999 | 120 00 | 106 00 |
| 18P DRIVESHAFT UPGRADE | 185 00 | 164 00 |
| 21D SYNC MEDIA SYSTEM | 395 00 | 349 00 |
| 41A TRANS POWER TAKE OFF DIESEL | 895 00 | 790 00 |
| 41H ENGINE BLOCK HEATER | 60 00 | 53 00 |
| 425 50 STATE EMISSIONS | NC | NC |
| 43P FRONT AXLE - 12K CAPACITY | 525 00 | 464 00 |
| 538 FRAME RAILS 10.25 120 PSI | 650 00 | 574 00 |
| 54R XL2020 PWR/HTD BLACK 102" | 275 00 | 242 00 |
| 55M JUMP START STUD | 90 00 | 80 00 |
| 586 PREM ELEC AM/FM/CD/MP3 | 290 00 | 247 00 |
| 59A AIR HORN | 90 00 | 80 00 |
| 59C BODY BUILDER WIRING | 135 00 | 119 00 |
| 60A SYNTHETIC FRT WHL BEARING LUBE | 50 00 | 45 00 |
| 607 SYN LUBE, REAR AXLE | 100 00 | 88 00 |
| 61D FRONT SUSPENSION - 12K CAP | 305 00 | 269 00 |
| 62B AIR COMPRESSOR - BENDIX 13.2CF | NC | NC |
| 62D AIR DRYER | 460 00 | 406 00 |
| 63B BATTERY - 2 - 12V 1800 CCA | 60 00 | 53 00 |
| 67C AIR BRAKES | 1770 00 | 1562 00 |
| G 30/70 AIR RIDE DRIVER VINYL | 395 00 | 349 00 |
| 90P POWER EQUIPMENT GROUP | 470 00 | 415 00 |
| 961 REAR SHOCK ABSORBERS | 165 00 | 146 00 |
| 962 DAYTIME RUNNING LIGHTS | 45 00 | 39 00 |
| DISCOUNTED EQUIPMENT | | |
| GDYR 11R22.5G G182 | 120 00 | 106 00 |
| TOTAL OPTIONS/OTHER | 10810 00 | 9544 00 |
| TOTAL VEHICLE & OPTIONS/OTHER | 80265 00 | 70097 00 |
| DESTINATION & DELIVERY | 2095 00 | 2095 00 |
| TOTAL FOR VEHICLE | 82360 00 | |
| FUEL CHARGE | | 37 08 |

197115

This invoice may not reflect the final cost of the vehicle in view of the possibility of future rebates, allowances, discounts and incentive awards from Ford Motor Company to the dealer.

| | | | | | |
|-----------------------------------|---------------|----------------------|-----------|-----------------------------|--------------|
| Sold to | | | | | |
| | | Order Type | Ramp Code | Batch ID | Price Level |
| Ship to (if other than above) | | Date Inv. Prepared | | Item Number | Transit Days |
| | | Ship Through | | | |
| Invoice & Unit Identification NO. | | Final Assembly Point | | Finance Company and/or Bank | |
| HB | Invoice Total | A & Z Plan | D Plan | X Plan | FPA |
| | | | | | AA |

This invoice to be used for the billing of vehicles only

Dealer's copy

DEALER 52E 909

VIN 1FDWF7DE4KDF12522

| | | |
|----------------------------|------------------------|----------------|
| SHIPPING WEIGHT: 11819 LBS | Suggested Retail Price | Invoice Amount |
| TOTAL | 82360.00 | 72229.08 |

197115
STK

This invoice may not reflect the final cost of the vehicle in view of the possibility of future rebates, allowances, discounts and incentive awards from Ford Motor Company to the dealer.

| | | | | | | | |
|--|---------------|------------------------------|--------|---|-------------------|------------------------|--------------------|
| Sold to Grande Truck Center P.O. BOX 201210 San Antonio | | 52E909 TX 78220 | | Order Type 1 | Ramp Code CR07 | Batch ID KG301 | Price Level 950 |
| Ship to (if other than above) Grande Truck Center 4562 IH 10 East San Antonio | | 52909 TX | | Date Inv. Prepared 07 30 19 | | Item Number 52-7115 | Transit Days 01 |
| Invoice & Unit Identification NO. 1FDWF7DE4KDF12522 | | Final Assembly Point OHIO | | Finance Company and/or Bank Ford Motor Credit 000001 | | | |
| HB | Invoice Total | A & Z Plan | D Plan | X Plan | FPA | AA | |
| 2411 | 72229.08 | | | | 995.00 | | |

This invoice to be used for the billing of vehicles only

Dealer's copy

Invoice

Number 042412



GRANDE TRUCK CENTER
4562 IH 10 EAST
SAN ANTONIO, TX 78219
USA

Smyrna Truck & Cargo
2158 Atlanta Road
Smyrna, Georgia 30080

Telephone: 770-433-0112
Fax: 770-438-1504

Invoice Date 11/15/2019
Due Date 12/15/2019 NET30
Sales order SO-045276
VIN: 1FDWF7DE6KDF12523
Requisition PO# 23562
Your reference
Our reference Marshall Hale
Payment NET 30 DAYS
Invoice account 71468

| Item number | Description | Quantity | Unit | Unit price | Discount | Amount |
|-----------------|---|----------|------|------------|----------|------------|
| 000186_202 | BODY, DRY FREIGHT Quantity: 1.00 Serial number: SO-045276 | 1.00 | ea | 14,655.00 | 0 | \$14655.00 |
| BODY | Aluminum Sheet and Post Dry Freight Van Body 24' Length - 102" Height - 102" Width .040" Pre-painted Aluminum Sides Extruded Aluminum Corner Post Galvannealed Steel Rear Frame with Integral Rain Gutter Aluminum Tread-Brite Front Radius Cast Aluminum Corner Caps Galvanized Anti-Snag Roof Bows on 24" Centers FMVSS 108 Exterior LED Lights & Reflectors Asphaltic Undercoat -FURNISH & INSTALL A 2500LB. TUCKUNDER LIFTGATE WITH 48X80 STEEL PLATFORM | 1.00 | | | | |
| ROOFING | Aluminum 24" x 102" | 1.00 | | | | |
| DOOR | 102X102 BODY PREMIUM PLASTIC 94 INCH WIDE X 96.875 INCH HIGH 2132 DOOR | 1.00 | | | | |
| FLOORING | 1.125" Laminated Hardwood Floor 24' Length 102" Width | 1.00 | | | | |
| POST | Front Wall 1.375 Galvanized Steel Z-Post | 1.00 | | | | |
| SIDE WALL POSTS | 1.375" Galvanized Steel 16" Centers for 24'L x 102"H Body | 1.00 | | | | |
| LIGHT KIT | RECESSED LIGHT KIT | 1.00 | | | | |
| LINING | E-Track 2 Rows 24' Length -MOUNT AT 30" & 48" C/L | 1.00 | | | | |

Invoice

Number: 042412



| | | |
|----------------------|---|------|
| POST | 2 LIGHT 12GA X 11.1875 X 106.25 CURBSIDE GALVANNEALED CORNER POST | 1.00 |
| POST | 2 LIGHT 12GA X 11.1875 X 106.25 ROADSIDE GALVANNEALED CORNER POST | 1.00 |
| SIDE LIN. PLY UNI 3/ | SIDE LIN. PLY UNI 3/8X102X20 | 1.00 |
| FRONT LINING | PLYWOOD 1/2 INCH 102" Height 102" Width | 1.00 |
| SUB FRAME | Forklift Package 102" Width | 1.00 |
| THRESHOLD | WIDE 1 INCH GALVANIZED THRESHOLD | 1.00 |
| LIGHT KIT | RECESSED LIGHT KIT | 1.00 |
| BACK UP ALARM | STANDARD BACK UP ALARM | 1.00 |
| LIGHT | DOMELIGHT W/ REAR MOUNT SWITCH | 2.00 |
| GRAB HANDLE | CURBSIDECHROME GRAB HANDLE | 1.00 |
| GRAB HANDLE | ROADSIDECHROME GRAB HANDLE | 1.00 |
| MUD FLAP | 24 INCH X 36 INCH SMYRNA CARGO MUD FLAP -WEIGHT TICKET & CERTIFICATION -DELIVERY TO GRANDE FORD | 1.00 |

| Sales subtotal amount | Total discount | Total charges | Net amount | Sales tax | Round-off | Total |
|-----------------------|----------------|---------------|------------|-----------|-----------|---------------|
| 14,655.00 | 0.00 | 250.00 | 14,905.00 | 0.00 | 0.00 | 14,905.00 USD |

Invoice

Number 042411



GRANDE TRUCK CENTER
4562 IH 10 EAST
SAN ANTONIO, TX 78219
USA

Smyrna Truck & Cargo
2158 Atlanta Road
Smyrna, Georgia 30080

Telephone: 770-433-0112
Fax: 770-438-1504

Invoice Date 11/15/2019
Due Date 12/15/2019 NET30
Sales order SO-045275
VIN: 1FDWF7DE4KDF12522
Requisition PO# 23561
Your reference
Our reference Marshall Hale
Payment NET 30 DAYS
Invoice account 71468

197115
13210

| Item number | Description | Quantity | Unit | Unit price | Discount | Amount |
|-----------------|---|----------|------|------------|----------|------------|
| 000186_202 | BODY, DRY FREIGHT Quantity: 1.00 Serial number: SO-045275. | 1.00 | ea | 14,655.00 | 0 | \$14655.00 |
| BODY | Aluminum Sheet and Post Dry Freight Van Body 24' Length - 102" Height - 102" Width .040" Pre-painted Aluminum Sides Extruded Aluminum Corner Post Galvannealed Steel Rear Frame with Integral Rain Gutter Aluminum Tread-Brite Front Radius Cast Aluminum Corner Caps Galvanized Anti-Snag Roof Bows on 24" Centers FMVSS 108 Exterior LED Lights & Reflectors Asphaltic Undercoat -FURNISH & INSTALL A 2500LB. TUCKUNDER LIFTGATE WITH 48X80 STEEL PLATFORM | 1.00 | | | | |
| ROOFING | Aluminum 24" x 102" | 1.00 | | | | |
| DOOR | 102X102 BODY PREMIUM PLASTIC 94 INCH WIDE X 96.875 INCH HIGH 2132 DOOR | 1.00 | | | | |
| FLOORING | 1.125" Laminated Hardwood Floor 24' Length 102" Width | 1.00 | | | | |
| POST | Front Wall 1.375 Galvanized Steel Z-Post | 1.00 | | | | |
| SIDE WALL POSTS | 1.375" Galvanized Steel 16" Centers for 24' L x 102" H Body | 1.00 | | | | |
| LIGHT KIT | RECESSED LIGHT KIT | 1.00 | | | | |
| LINING | E-Track 2 Rows 24' Length -MOUNT AT 30" & 48" C/L | 1.00 | | | | |

Invoice

Number 042411



| | | |
|----------------------|---|------|
| POST | 2 LIGHT 12GA X 11.1875 X 106.25 CURBSIDE GALVANNEALED CORNER POST | 1.00 |
| POST | 2 LIGHT 12GA X 11.1875 X 106.25 ROADSIDE GALVANNEALED CORNER POST | 1.00 |
| SIDE LIN. PLY UNI 3/ | SIDE LIN. PLY UNI 3/8X102X20 | 1.00 |
| FRONT LINING | PLYWOOD 1/2 INCH 102" Height 102" Width | 1.00 |
| SUB FRAME | Forklift Package 102" Width | 1.00 |
| THRESHOLD | WIDE 1 INCH GALVANIZED THRESHOLD | 1.00 |
| LIGHT KIT | RECESSED LIGHT KIT | 1.00 |
| BACK UP ALARM | STANDARD BACK UP ALARM | 1.00 |
| LIGHT | DOMELIGHT W/ REAR MOUNT SWITCH | 2.00 |
| GRAB HANDLE | CURBSIDECHROME GRAB HANDLE | 1.00 |
| GRAB HANDLE | ROADSIDECHROME GRAB HANDLE | 1.00 |
| MUD FLAP | 24 INCH X 36 INCH SMYRNA CARGO MUD FLAP -WEIGHT TICKET & CERTIFICATION -DELIVERY TO GRANDE FORD | 1.00 |
| LIFTGATE | Maxon TE-25 Tuck-A-Way 2500lbs. Capacity 48" x 78.5" +Wedge Steel Platform Serial Number: 1910526106 | 1.00 |

| Sales subtotal amount | Total discount | Total charges | Net amount | Sales tax | Round-off | Total |
|-----------------------|----------------|---------------|------------|-----------|-----------|---------------|
| 14,655.00 | 0.00 | 250.00 | 14,905.00 | 0.00 | 0.00 | 14,905.00 USD |



Rush Truck Center - Dallas Medium Duty

4000 Irving Boulevard
 Dallas, TX 75247
 214-631-2050

Retail Sales Order

rushtruckcenters.com

| | | | |
|---|---------------------|--|--|
| SALES ORDER | | Date 12/07/2020 | |
| Please enter my order for the following: <input checked="" type="checkbox"/> New <input checked="" type="checkbox"/> F.E.T. Applicable <input type="checkbox"/> Used <input type="checkbox"/> F.E.T. Exempt | | Galveston ISD Customer's Name 3904 Ave T Galveston TX 77550 Street City State Zip (409) 789-6002 Federal Tax ID # Business Phone Fax | |
| Make Ford | Series F-750 | Purchaser's Name | |
| Year 2021 | Body Type | Street City State Zip | |
| Color OXFORD WHITE | Trim | Federal Tax ID # Business Phone Fax | |
| Serial # 1FDNF7DC6MDF00238 | | Purchaser's Name | |
| Stock # 1149112 | | Street City State Zip | |
| To be delivered on or about | | Federal Tax ID # Business Phone Fax | |
| BUY BOARD CONTRACT 601-19/ | | Aaron Davis | |
| | 400.00 | By Salesman | |
| 2021 FORD F-750 REGULAR CAB, 6.7L DIESEL, | | Truck Will be Titled in _____ County. | |
| AUTO TRANS, HYD BRAKES, BACK UP ALARM, | | LIENHOLDER INFORMATION | |
| 25,999 GVWR, POWER EQUIPMENT, | | Date of Lien | |
| | 80,210.00 | Lien Holder | |
| KEYLESS ENTRY, | | Draft Through | |
| 26' DRY VAN BODY, 10' SCUFF, 2 ROWS E-TRACK, | | | |
| MAXON 3,00 LB TUCK UNDER LIFT GATE ALUMINUM, | | | |
| | 20,090.00 | | |
| GOVERNMENT DISCOUNTS | | | |
| | (12,297.48) | | |
| Sales Price | | | |
| | 88,402.52 | | |
| Factory Paid F.E.T. | | | |
| | 0.00 | | |
| F.E.T. Tire Credit | | | |
| | 0.00 | | |
| Total Factory Paid F.E.T. | | | |
| | 0.00 | | |
| Optional Extended Warranties | | | |
| | 0.00 | | |
| Sub-Total | | | |
| | 88,402.52 | | |
| Dealer Paid F.E.T. * | | Manufacturer Rebate | |
| | 0.00 | | |
| Local Taxes | | Total Used Vehicle Allowance * | |
| | 0.00 | 0.00 | |
| License, Transfer, Title, Registration Fee | | Less Total Balance Owed | |
| | 0.00 | 0.00 | |
| Dealer's Inventory Tax | | Total Net Allowance on Used Vehicle(s) | |
| | 0.00 | 0.00 | |
| Documentary Fee | | Deposit or Credit Balance | |
| | 0.00 | 0.00 | |
| Total Cash Delivered Price | | Cash with Order | |
| | 0.00 | 0.00 | |
| Total Down Payment | | ←..... 0.00 | |
| Unpaid Cash Balance Due on Delivery | | *See Trade-In details on page 4 | |
| <p>A DOCUMENTARY FEE IS NOT AN OFFICIAL FEE. A DOCUMENTARY FEE IS NOT REQUIRED BY LAW, BUT MAY BE CHARGED TO CUSTOMERS FOR HANDLING DOCUMENTS RELATING TO THE SALE. A DOCUMENTARY FEE MAY NOT EXCEED A REASONABLE AMOUNT AGREED TO BY PARTIES. THIS NOTICE IS REQUIRED BY LAW.</p> <p>The Dealer's Inventory Tax charge is intended to reimburse the Dealer for ad valorem taxes on its motor vehicle inventory. The charge, which is paid by the Dealer to the county tax assessor-collector, is not a tax imposed on a Customer by the government, and is not required to be charged by the Dealer to the Customer.</p> | | Customer, by the execution of this Order, offers to purchase the Product(s) described above upon the Terms and Conditions contained herein. Customer acknowledges that Customer has read the Terms and Conditions of this Order on Page 2 and has received a true copy of this Order and the Terms and Conditions. | |
| <p>*SUBJECT TO ADJUSTMENT - FINAL F.E.T. MAY VARY ANY F.E.T. VARIANCE RESPONSIBILITY OF DEALER</p> | | Customer's Signature _____ Date _____ | |
| <p>NOTICE: THE FOLLOWING ARE IMPORTANT PROVISIONS OF THIS ORDER</p> <p>THIS ORDER CANCELS AND SUPERCEDES ANY PRIOR AGREEMENTS AND, AS OF THE DATE HEREOF, COMPRISES THE COMPLETE AND EXCLUSIVE STATEMENT OF THE TERMS OF THE AGREEMENT BETWEEN THE PARTIES.</p> <p>IF ANY REPRESENTATIONS, SPECIFICATIONS OR OTHER AGREEMENTS ARE RELIED UPON BY CUSTOMER, THEY MUST BE IN WRITING AND SPECIFICALLY IDENTIFIED AND REFERENCED IN THIS ORDER; OTHERWISE, THEY WILL NOT BE BINDING ON OR ENFORCEABLE AGAINST DEALER.</p> <p>THERE ARE NO UNWRITTEN ORAL AGREEMENTS BETWEEN THE PARTIES.</p> | | OFFER RECEIVED BY: _____ Date _____ SALES REPRESENTATIVE | |
| | | OFFER ACCEPTED BY: _____ Date _____ AUTHORIZED REPRESENTATIVE | |