



ECISD CTE CENTER

OUR students...THE future

NEW CTE CENTER

BOARD WORKSHOP PRESENTATION

November 12, 2024 : 6:00pm

PRK

TODAY'S AGENDA

We are so excited to update you on the design for the New CTE Center

1. PROJECT SCOPE AND SCHEDULE
2. RECAP OUR JOURNEY
3. SITE PLAN
4. FLOOR PLAN
5. EXTERIOR DESIGN
6. INTERIOR DESIGN
7. ANIMATION
8. DISCUSSION

1. PROJECT SCOPE & SCHEDULE

PROJECT SCOPE

NEW CTE CENTER

DESIGNED FOR 400 FULL-TIME STUDENTS AND
2,000 ADDITIONAL STUDENTS THROUGHOUT THE DAY

OPENING OF JANUARY 2027

PROGRAMS INCLUDED

WELDING

OIL AND GAS

SUPPLY CHAIN / LOGISTICS

MANUFACTURING

AUTOMATION

ARCHITECTURE AND CONSTRUCTION

ADMINISTRATION

GENERAL AREAS

AUTO COLLISION

FUTURE TEACHERS OF ODESSA (FTO)

HEALTH SCIENCE

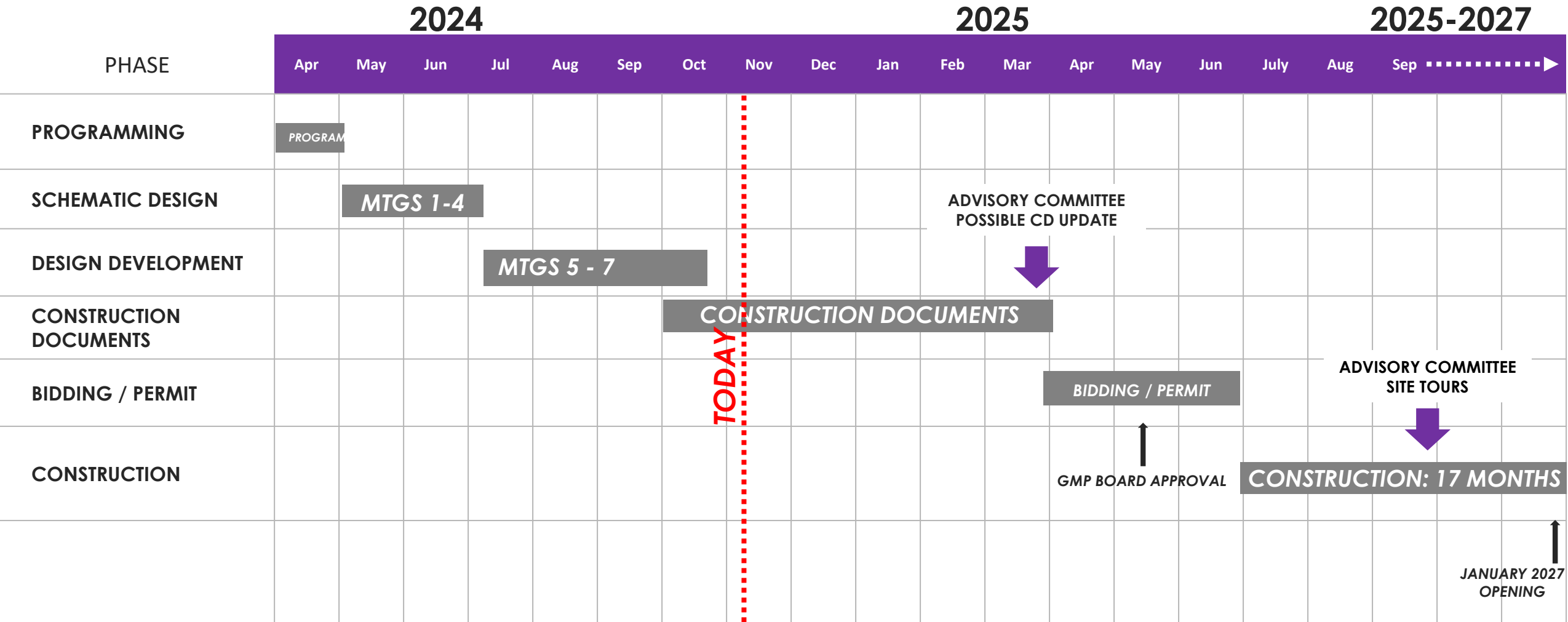
CULINARY ARTS

INTERDISCIPLINARY STUDIES

LIBRARY / RESOURCE ACADEMY

FOOD SERVICES

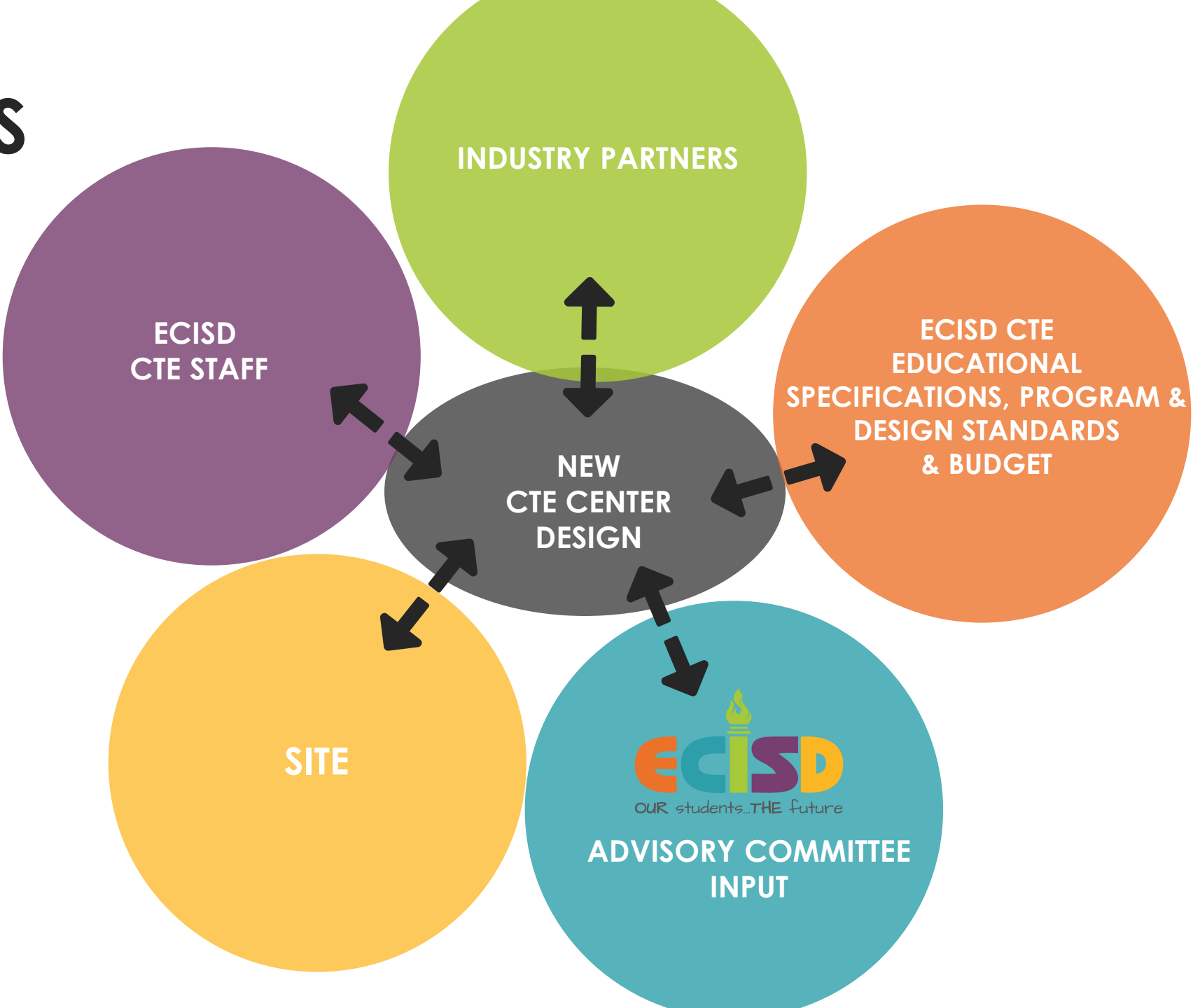
PROPOSED PROJECT SCHEDULE



DECEMBER 2026 COMPLETION

DESIGN PROCESS

WHO HAS had INPUT



DESIGN PROCESS: WHAT WE HAVE COVERED

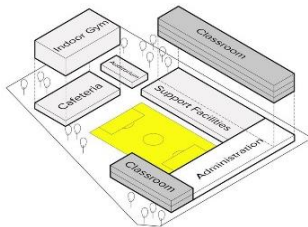
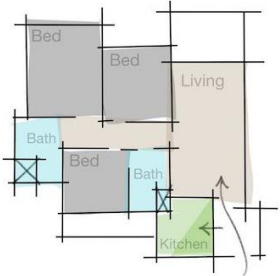
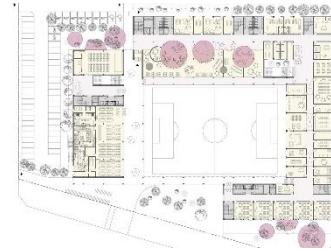
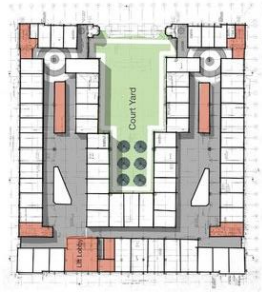
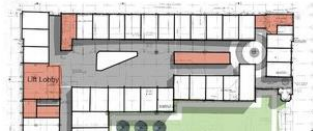
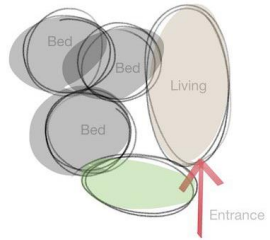
GOALS

CONCEPTUALIZE

EXPLORE

DEVELOP

REFINE



MTG 1 – MTG 3

MTG 4

MTG 5 – MTG 6

MTG 7



SCHEMATIC DESIGN

DESIGN DEVELOPMENT

ECISD CTE Center Design Guiding Principles

- 1. EMULATE THE WORKPLACE** to provide students with an authentic professional environment and bridge the gap between education and industry.
- 2. CREATE AN ENVIRONMENT WHERE COLLABORATION THRIVES** physically and visually. Create synergies generated by collaboration between programs and allow opportunities for integrated teaching and learning experiences.
- 3. ENGAGE AND WELCOME THE COMMUNITY, INDUSTRY, AND BUSINESS** through industry partnerships, business opportunities, and community events.
- 4. INSPIRE INNOVATION AND DISCOVERY IN A FLEXIBLE AND ADAPTABLE BUILDING** through state-of-the-art learning spaces that are relevant and support current and future careers.

2. RECAP OUR JOURNEY

MEETING #1 RECAP: TOUR OF INDUSTRY



CENTER FOR ADVANCED CAREERS ALIEF ISD



J.B. HENSLER COLLEGE & CAREER ACADEMY ALVINE ISD



ANGLETON NEW CTE CENTER ANGLETON ISD



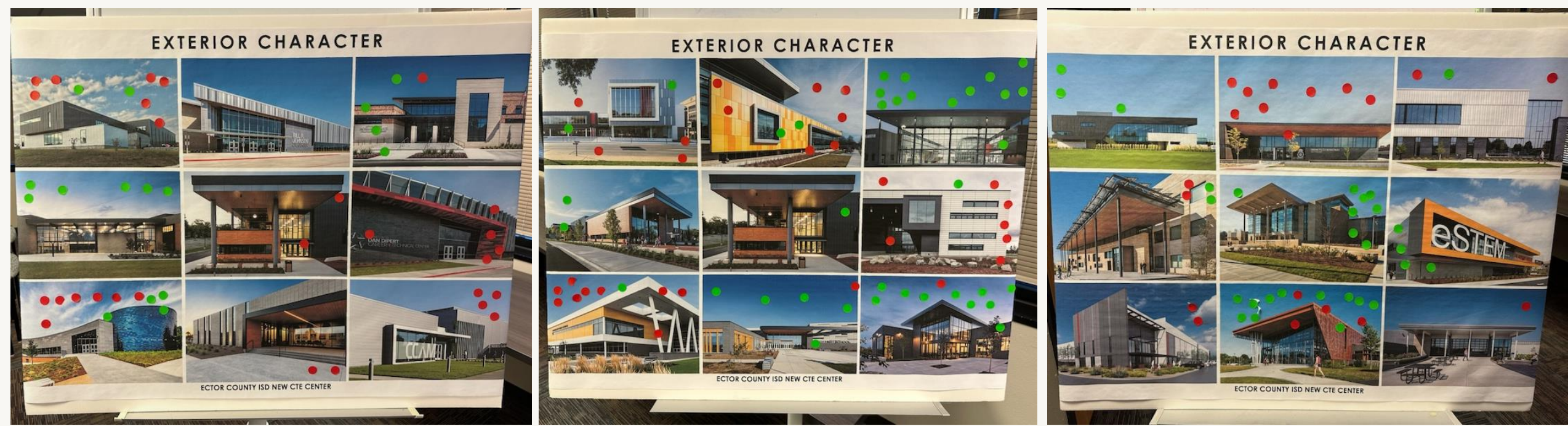
THE GUTHRIE CENTER SPRING BRANCH ISD



PFLUGERVILLE ISD NEW CTE CENTER PFLUGERVILLE ISD



MEETING #1 RECAP: EXTERIOR CHARACTER EXERCISE




BEACON FOR THE COMMUNITY
BUILDING BRANDING
MODERN
GLASS BOX
IDENTIFIABLE ENTRANCE

MEETING #2 RECAP: BUILDING ORGANIZATION



MEETING #2 RECAP: BUILDING ORGANIZATION

TABLE 1 TABLE 2 TABLE 3 TABLE 4



COMMON THEME: MAIN ENTRY FACING EAST MURPHY ST.
TAKEAWAY:

- MAIN ENTRY TO BE VISIBLE FROM EAST MURPHY ST.
- STRONG PRESENCE ON SOUTH SIDE OF BUILDING

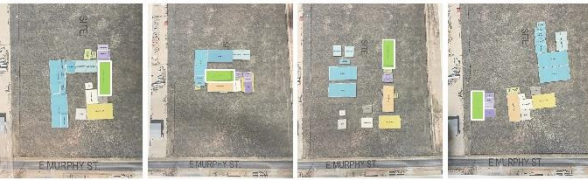
TABLE 1 TABLE 2 TABLE 3 TABLE 4



COMMON THEME: HIGH BAY AREAS TOGETHER
TAKEAWAY:

- HIGH BAY AREAS GROUPED TOGETHER WITH SHARED ACCESS TO OUTDOOR SPACE
- HIGH BAY AREAS ON THE SOUTH AND EAST SIDES


TABLE 1 TABLE 2 TABLE 3 TABLE 4



COMMON THEME: INTERDISCIPLINARY ON SECOND FLOOR
TAKEAWAY:

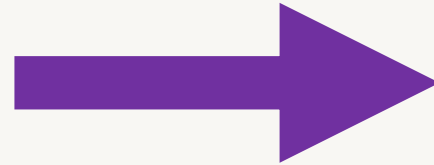
- PRIORITIZE FIRST FLOOR DOR CTE SPACES
- GENERAL CLASSROOMS AND SCIENCE LABS ON SECOND FLOOR

TABLE 1 TABLE 2 TABLE 3 TABLE 4



COMMON THEME: STUDENT HUB CENTRALLY LOCATED
TAKEAWAY:

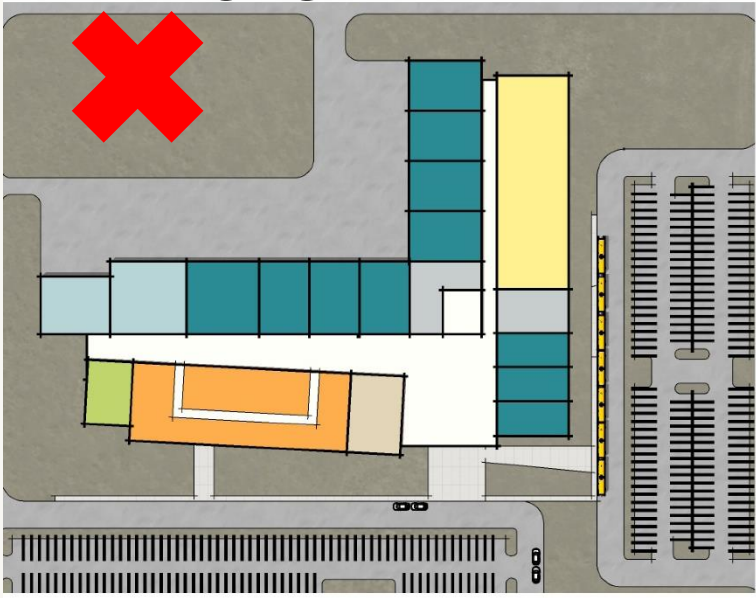
- VISIBILITY AND EASY ACCESS TO THE CENTRAL HUB/CAFETERIA
- VISIBILITY OF CENTRAL HUB FOR THE COMMUNITY AND STUDENTS



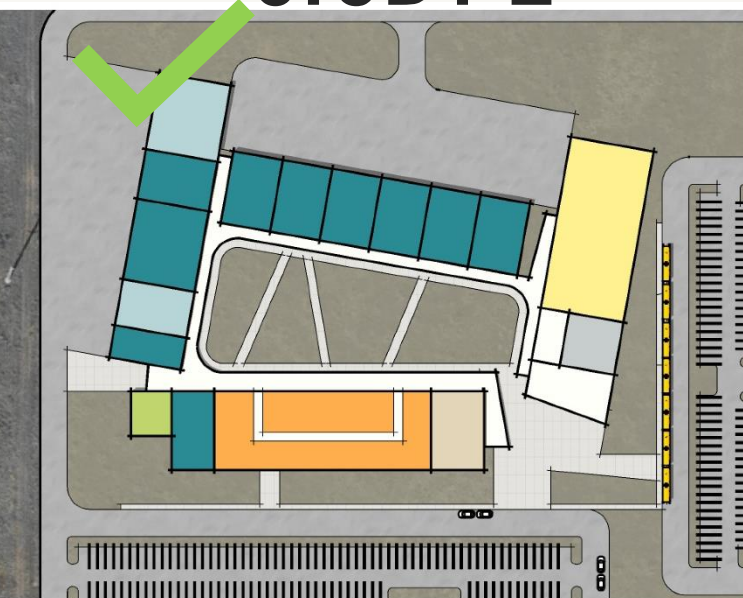
WITH YOUR FEEDBACK WE HAVE
CREATED A CONCEPTUAL
BUILDING FORM

MEETING #3 RECAP: BUILDING ORGANIZATION

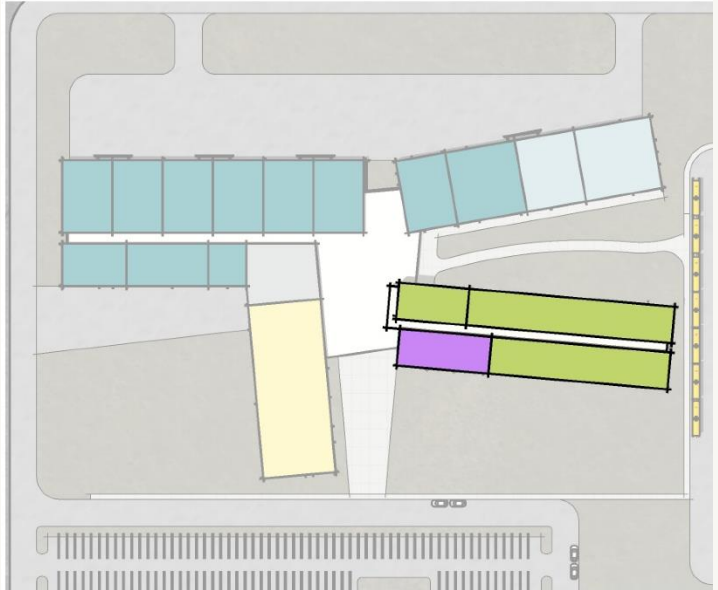
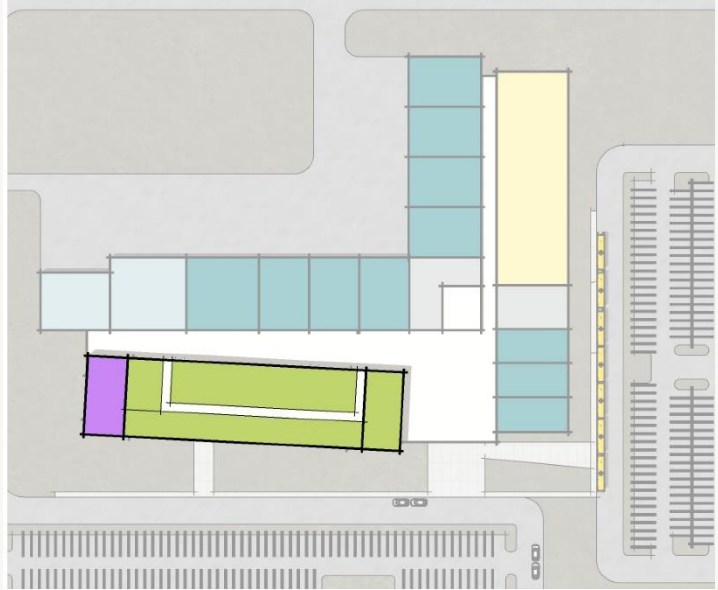
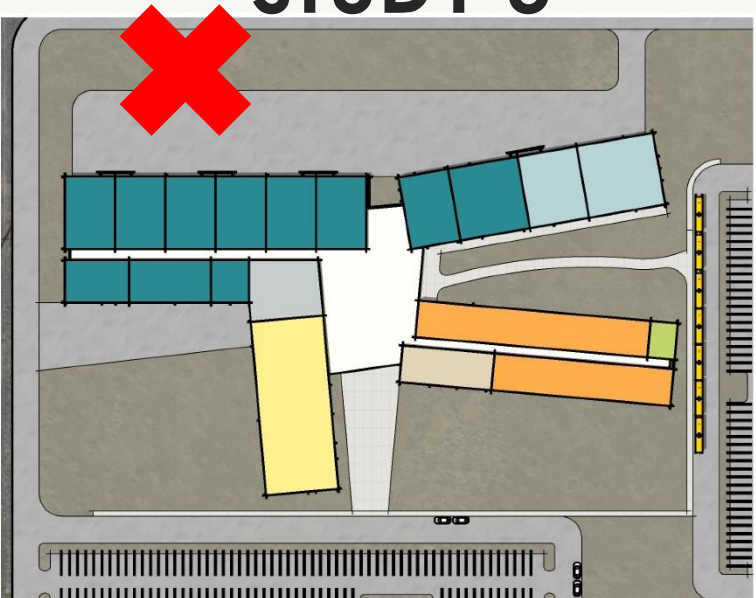
STUDY 1



STUDY 2



STUDY 3



MEETING #3 RECAP: GUIDING PRINCIPLES

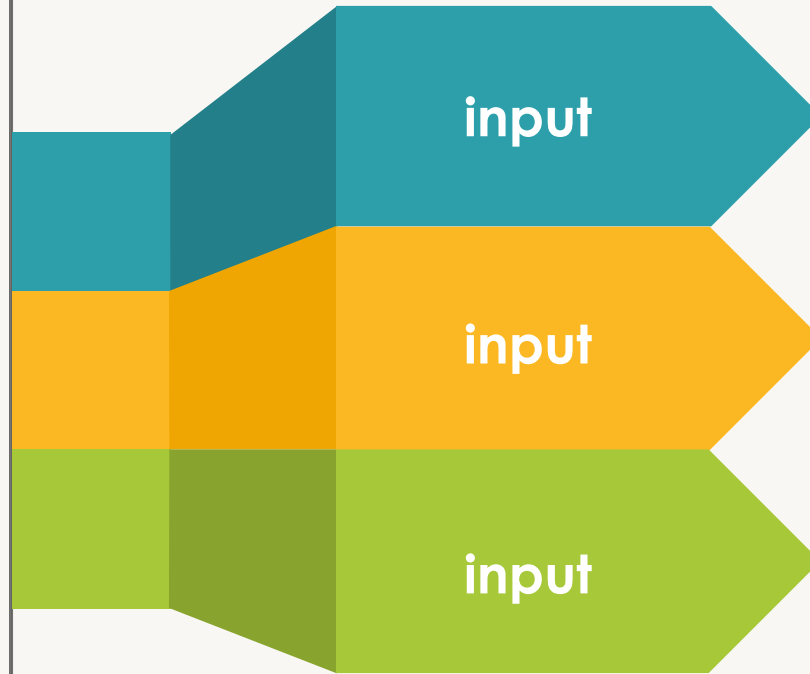
QUESTION 1: Describe your goal for the **overall feel** of the new ECISD CTE Center. what you said...



QUESTION 2: As you consider a new CTE Center for ECISD, what are some of the **building attributes** that you think would allow for student success and engagement? what you said...



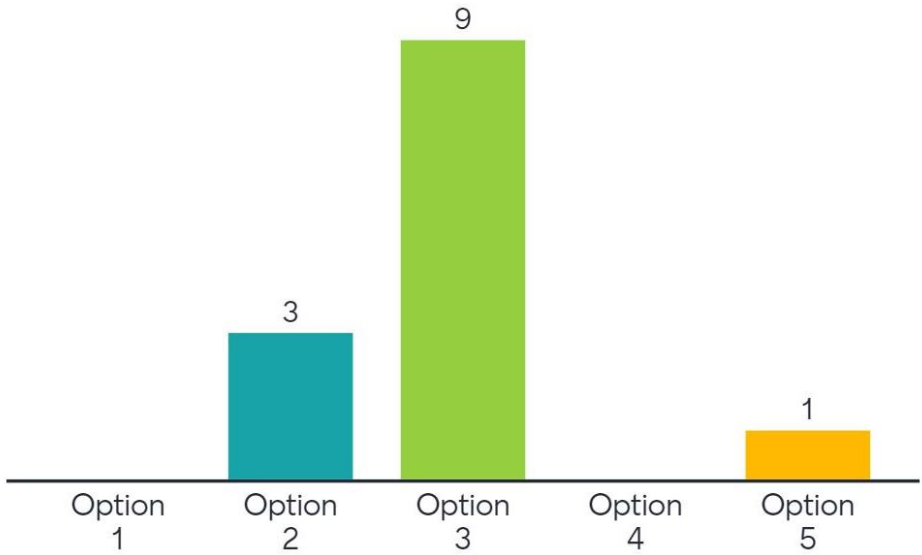
QUESTION 3: Describe what can make the new ECISD CTE Center a **special and unique experience** for students and staff. what you said...



what you said...

ECISD CTE Design
Guiding Principles

MEETING #4 RECAP: EXTERIOR CHARACTER

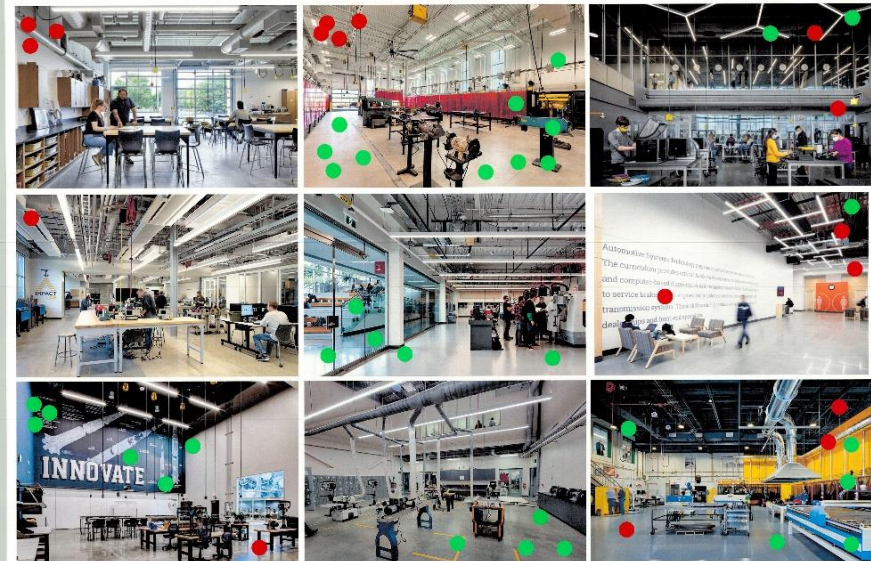


EXTERIOR: **FEEDBACK**



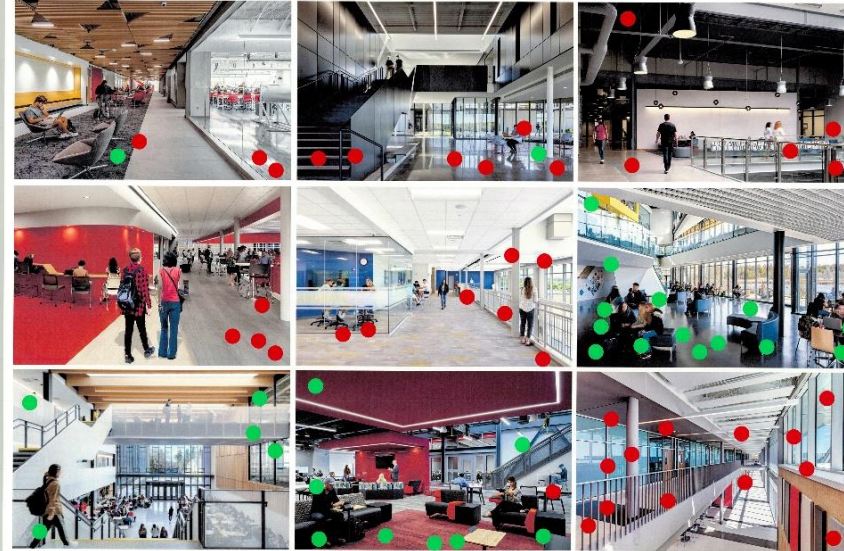
MEETING #4 RECAP: INTERIOR CHARACTER EXERCISE

LABS



ECTOR COUNTY ISD NEW CTE CENTER

SHARED SPACES

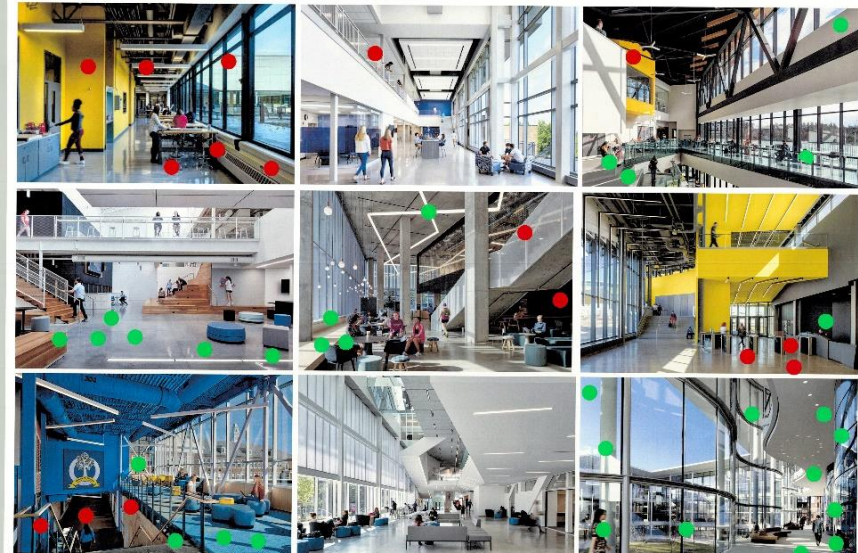


ECTOR COUNTY ISD NEW CTE CENTER

COMMITTEE FEEDBACK

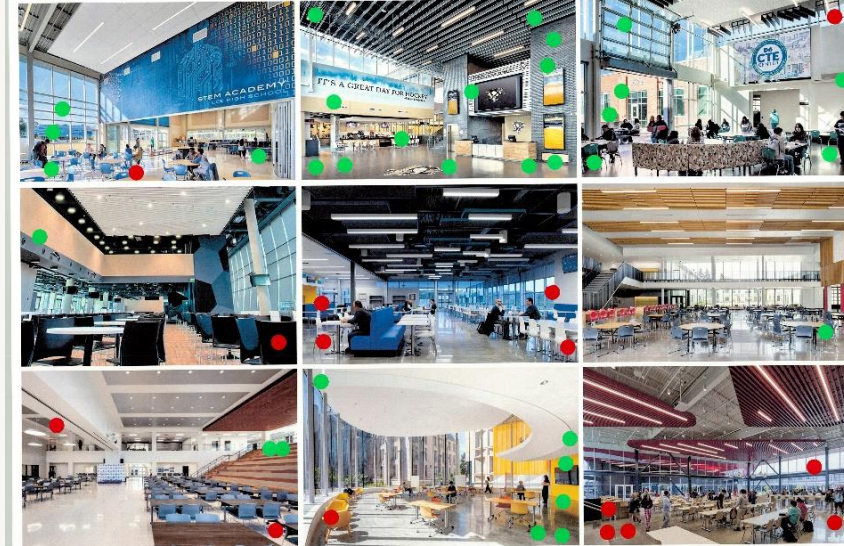
- LIKE THE BRIGHT SPACES
- LIKE A LOT OF NATURAL LIGHT
- LIKED SOME OF THE ANGLES
- CURVES OF SOME OF THE IMAGES
- DO NOT LIKE THE DARK CEILINGS
- LIKE THE VIEWS TO THE OUTSIDE

SHARED SPACES



ECTOR COUNTY ISD NEW CTE CENTER

COMMUNITY SPACE



ECTOR COUNTY ISD NEW CTE CENTER

MEETING #5 RECAP: EXTERIOR CHARACTER



COMMITTEE FEEDBACK

- LIKE ENTRY COLUMNS FROM STUDY 1



COMMITTEE FEEDBACK

- LIKE OVERALL LOOK OF THIS OPTION
- LIKE THAT THE MAIN ENTRY IS HIGHLIGHTED WITH LIGHTER COLOR



COMMITTEE FEEDBACK

- GROUP DID NOT CARE FOR THIS STUDY

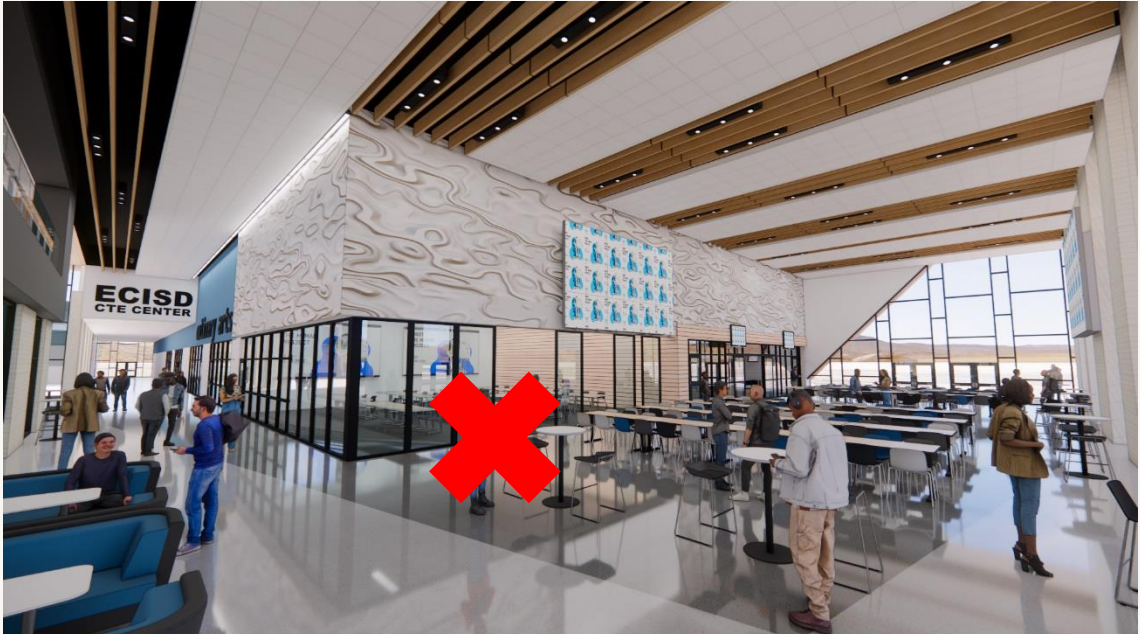
MEETING #5 RECAP: INTERIOR STUDIES



1

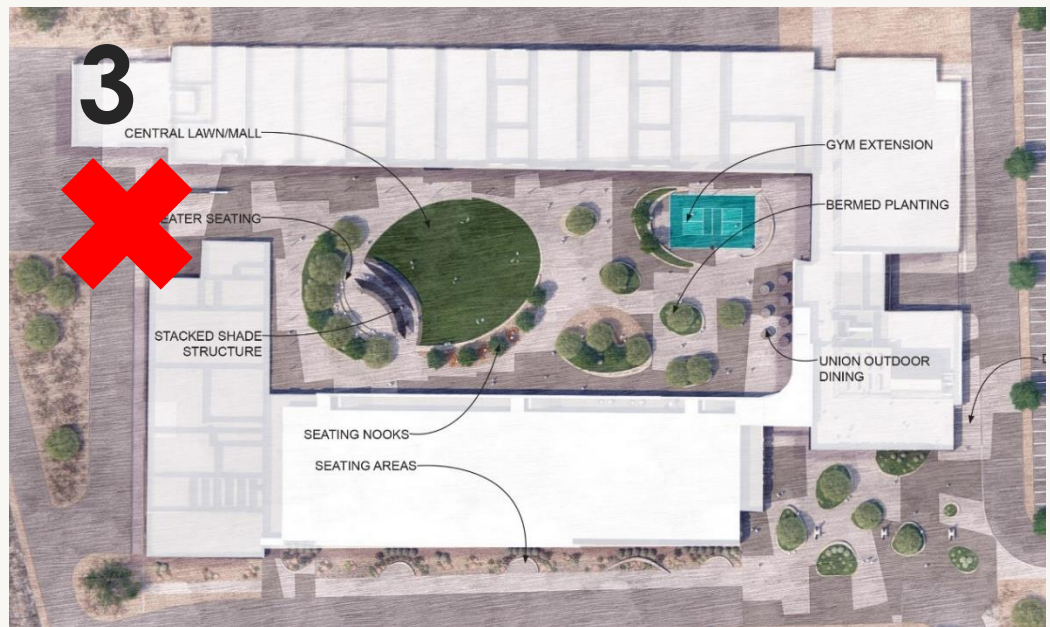
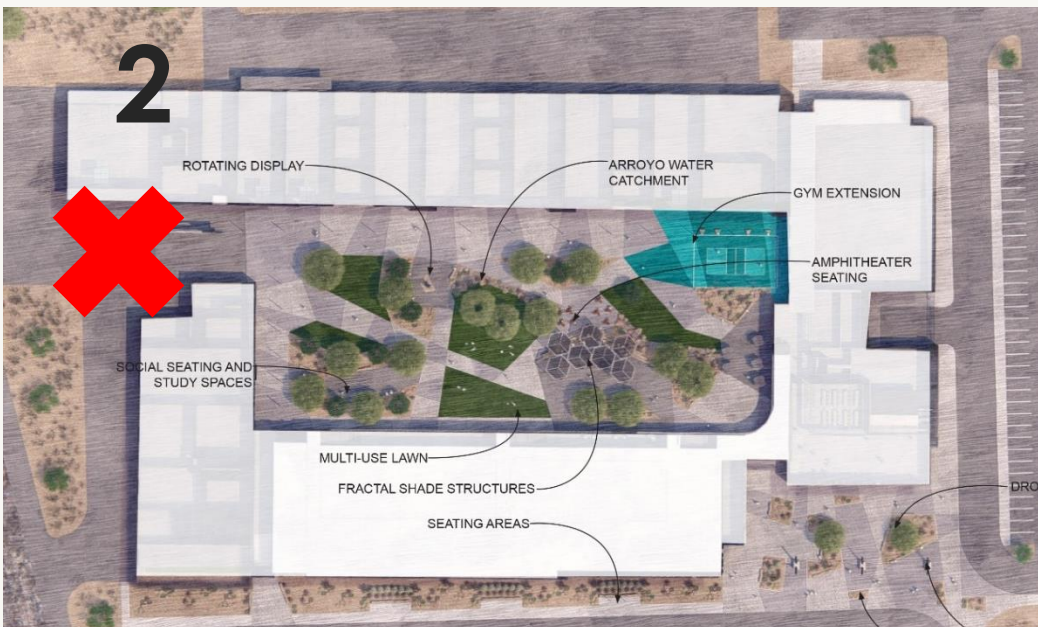
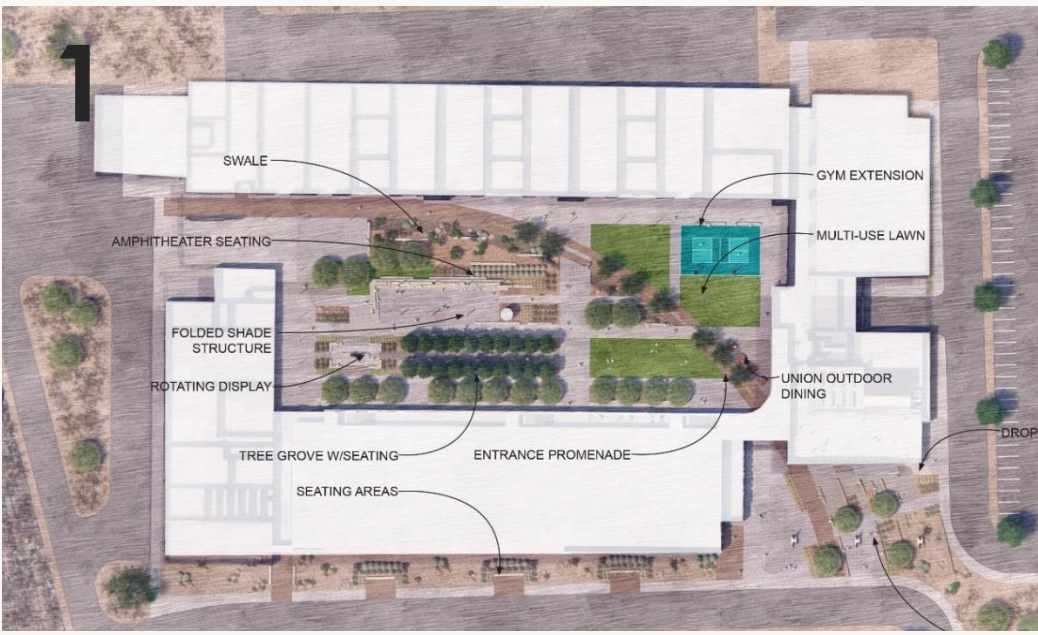


2



3

MEETING #6 RECAP: LANDSCAPE STUDIES



3. SITE PLAN

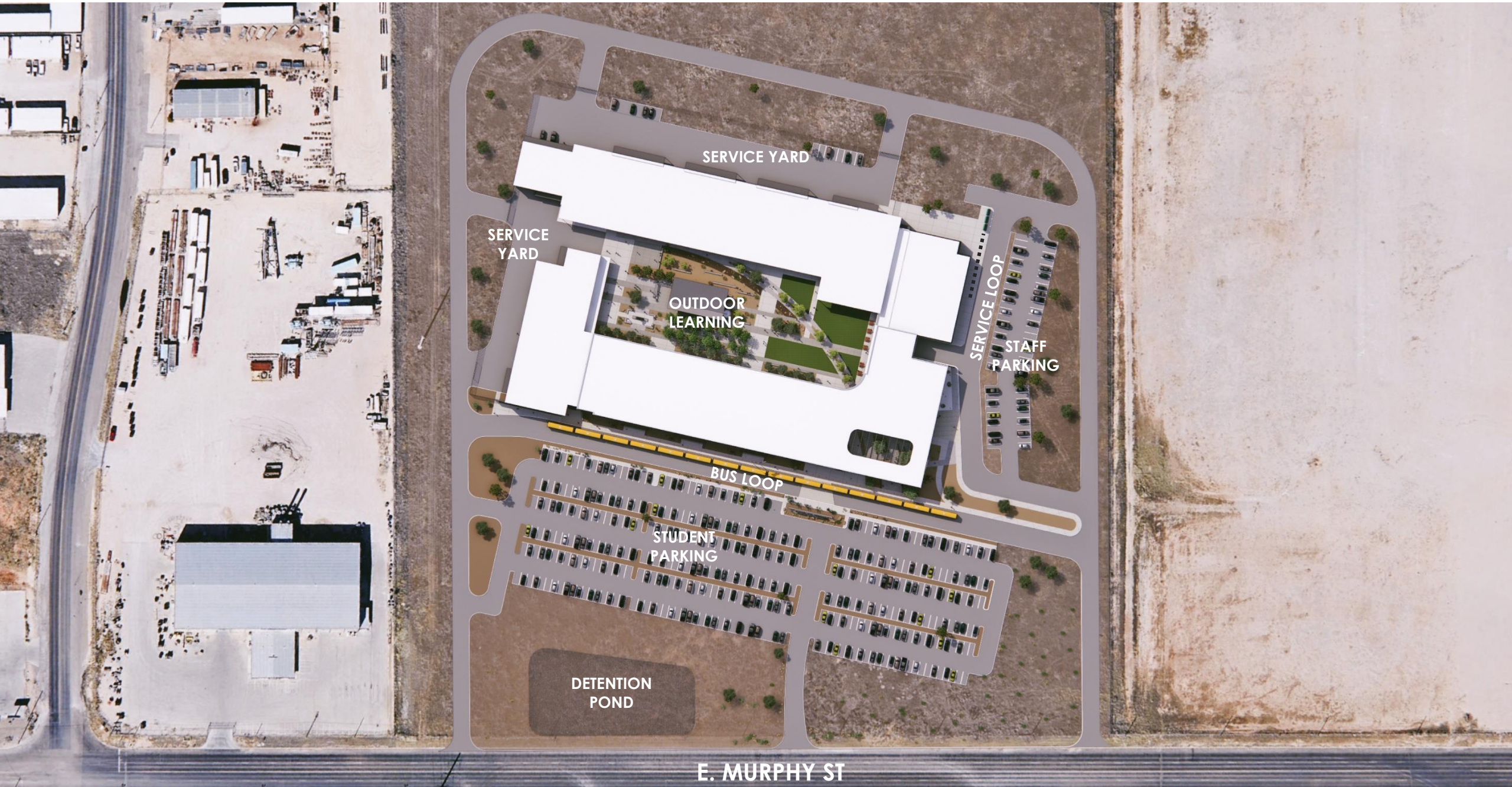
SITE PLAN: COMPOSITE



NEW CTE
CENTER

E. MURPHY ST

SITE PLAN: ENLARGED



SERVICE YARD

SERVICE YARD

OUTDOOR LEARNING

SERVICE LOOP

STAFF PARKING

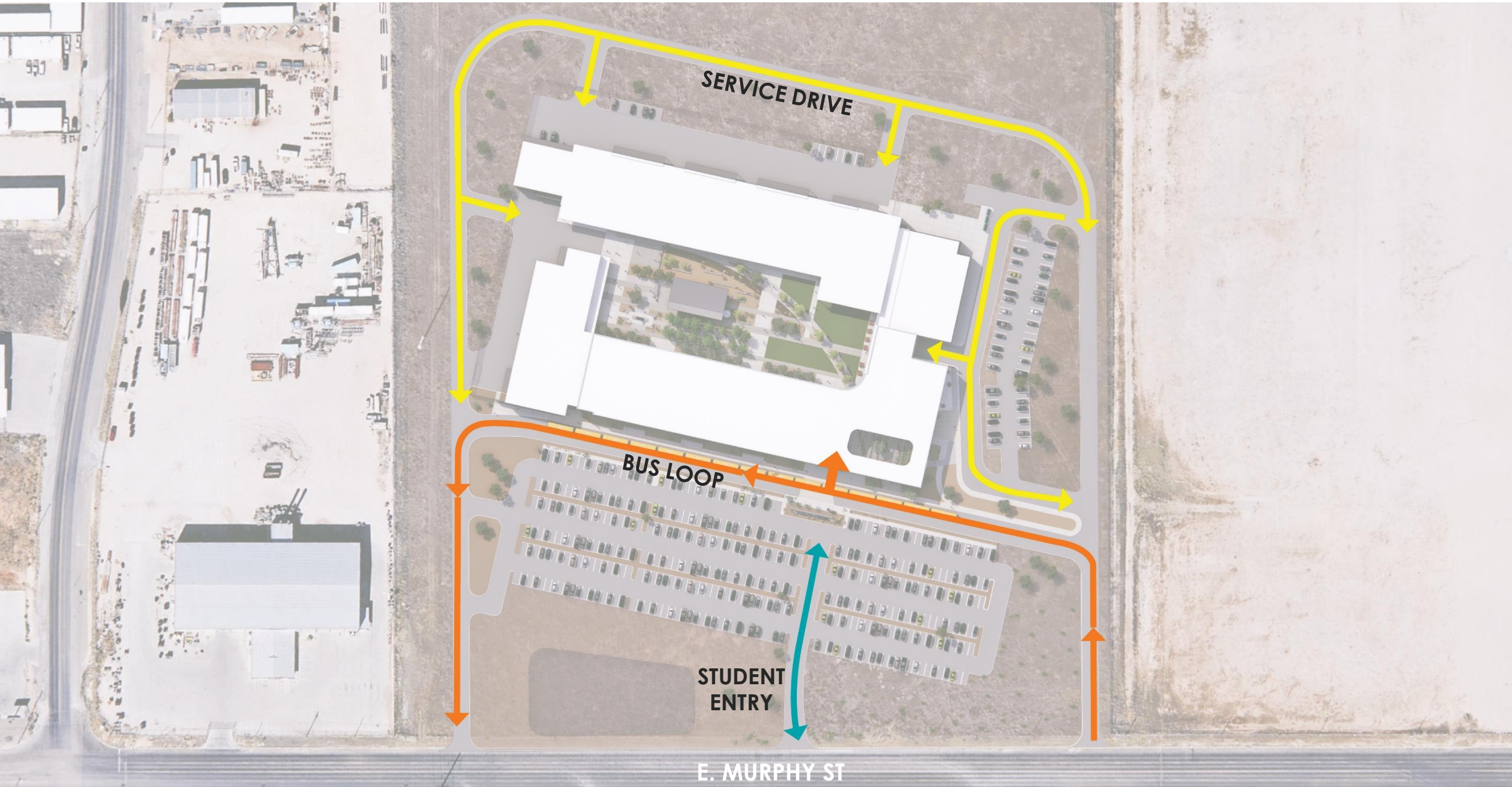
BUS LOOP

STUDENT PARKING

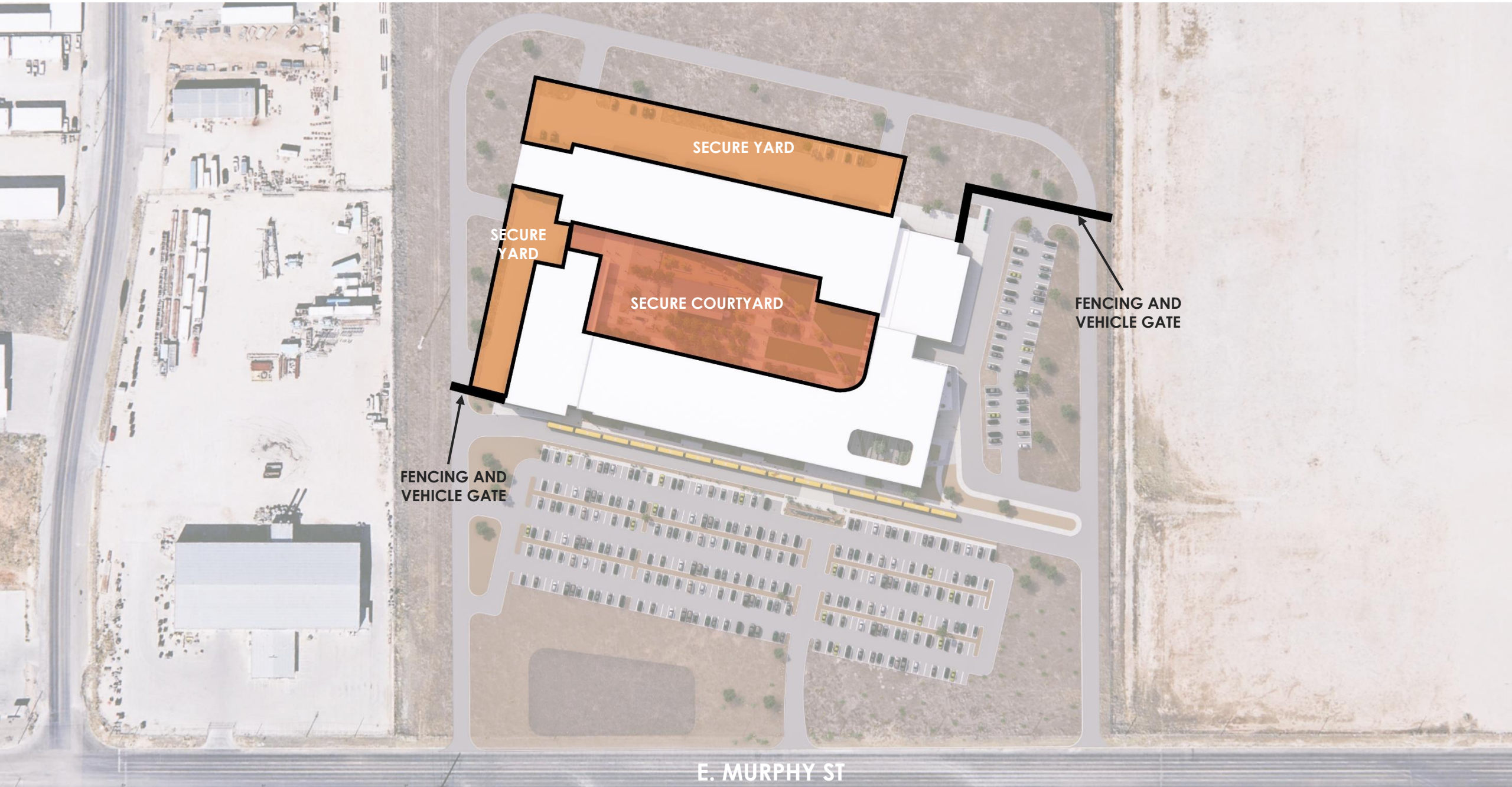
DETENTION POND

E. MURPHY ST

SITE PLAN: CIRCULATION



SITE PLAN: SECURE ZONES



SECURE YARD

SECURE YARD

SECURE COURTYARD

FENCING AND VEHICLE GATE

FENCING AND VEHICLE GATE

E. MURPHY ST

SITE PLAN: AERIAL VIEW



SITE PLAN: COURTYARD



SITE PLAN: COURTYARD



SITE PLAN: COURTYARD

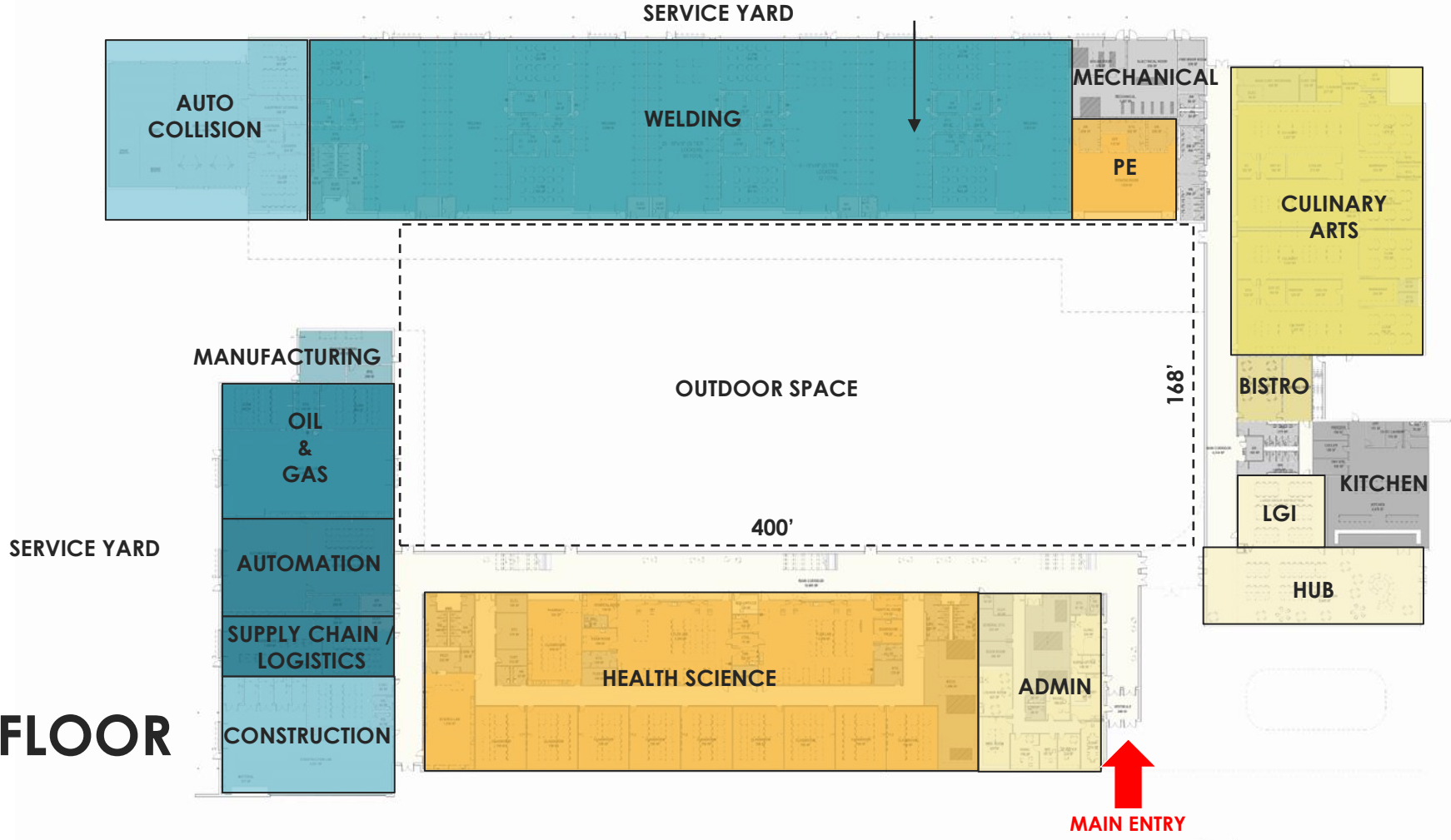


SITE PLAN: COURTYARD

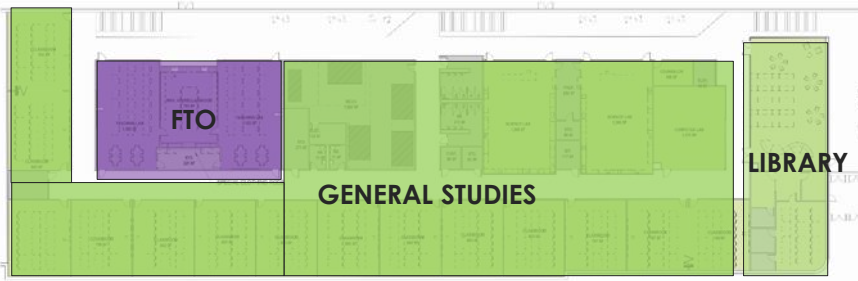


4. FLOOR PLANS

FIRST FLOOR



SECOND FLOOR



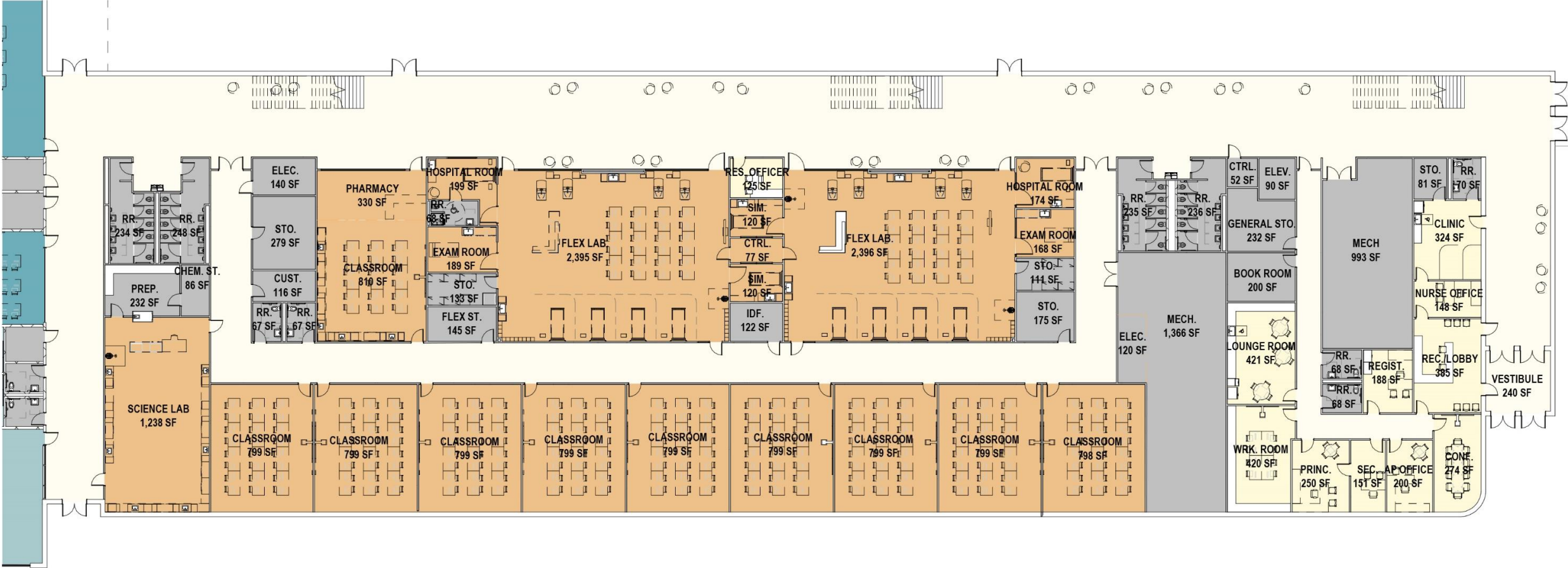


NEW CTE CENTER
ECTOR COUNTY ISD

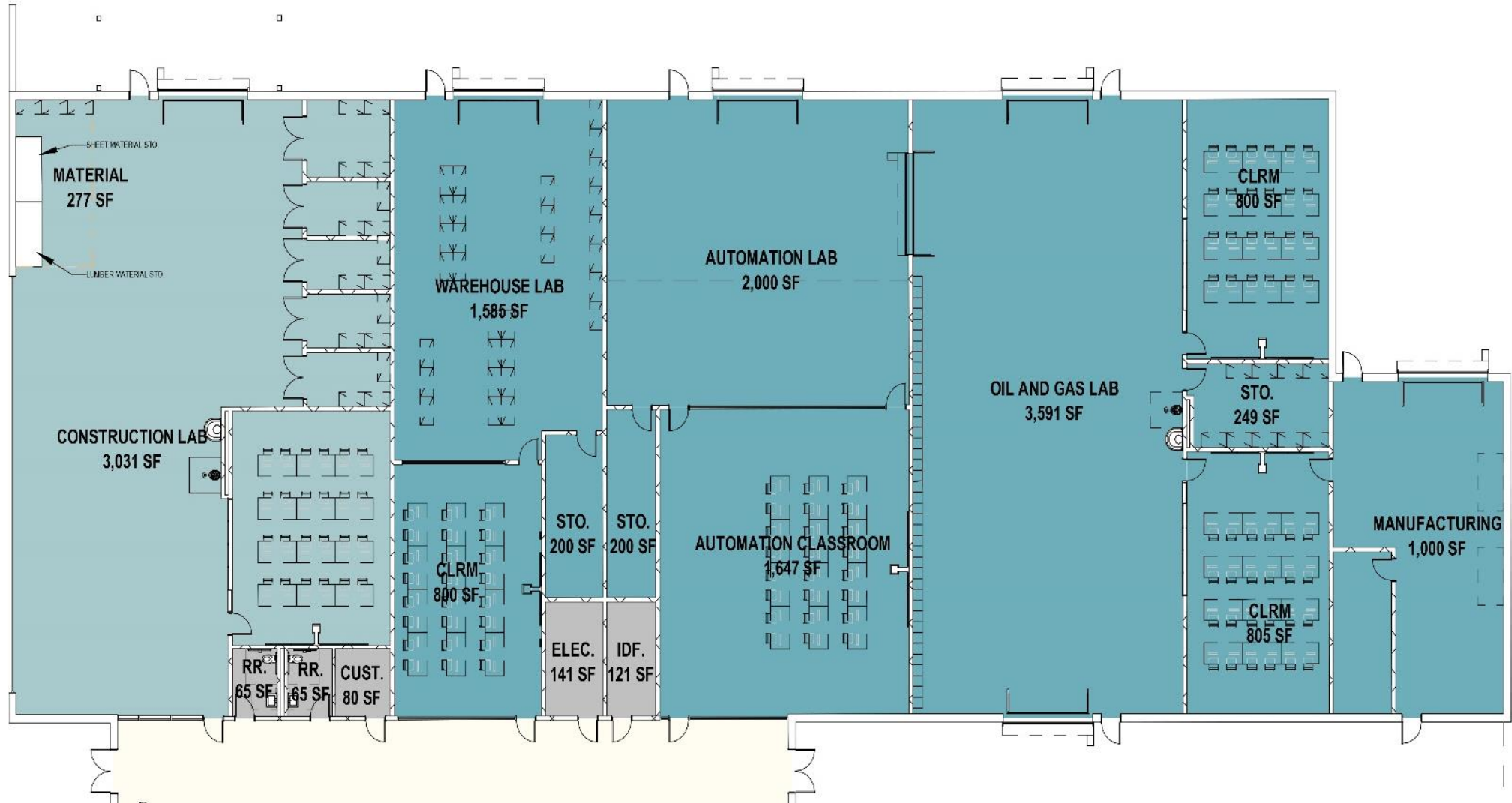
OVERALL FLOOR PLANS



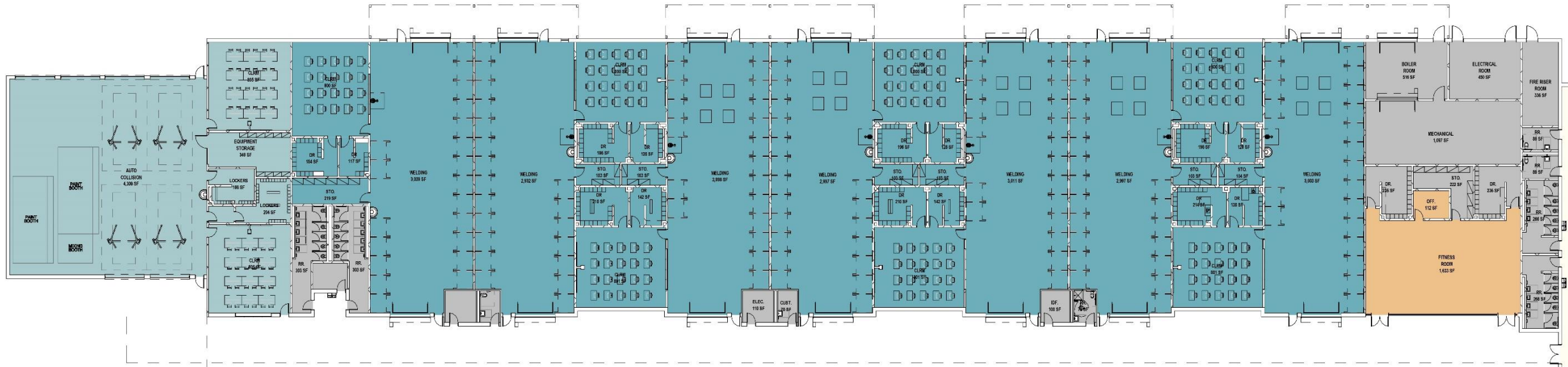
FLOOR PLAN: HEALTH SCIENCE / ADMIN



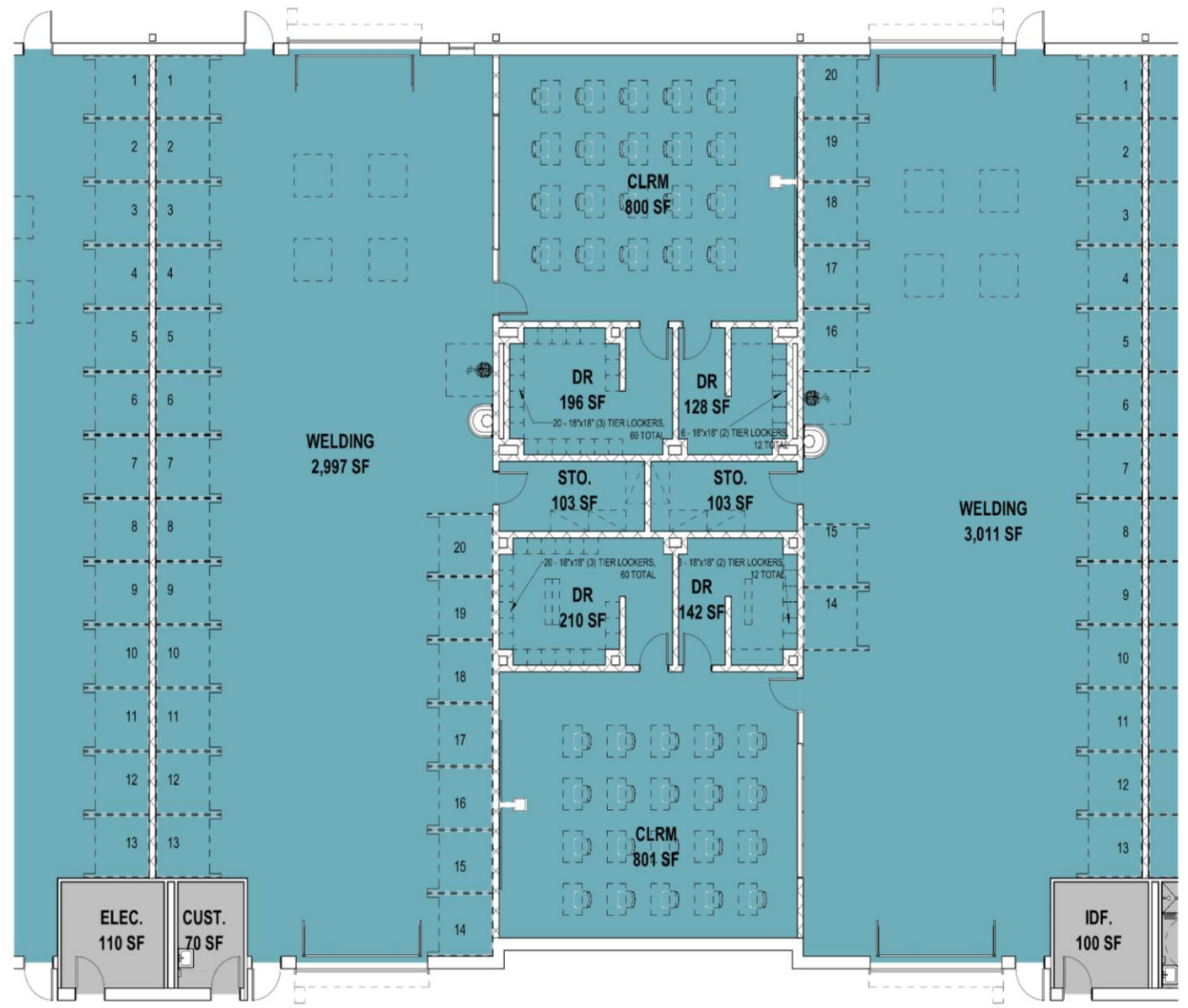
FLOOR PLAN: ENERGY WING



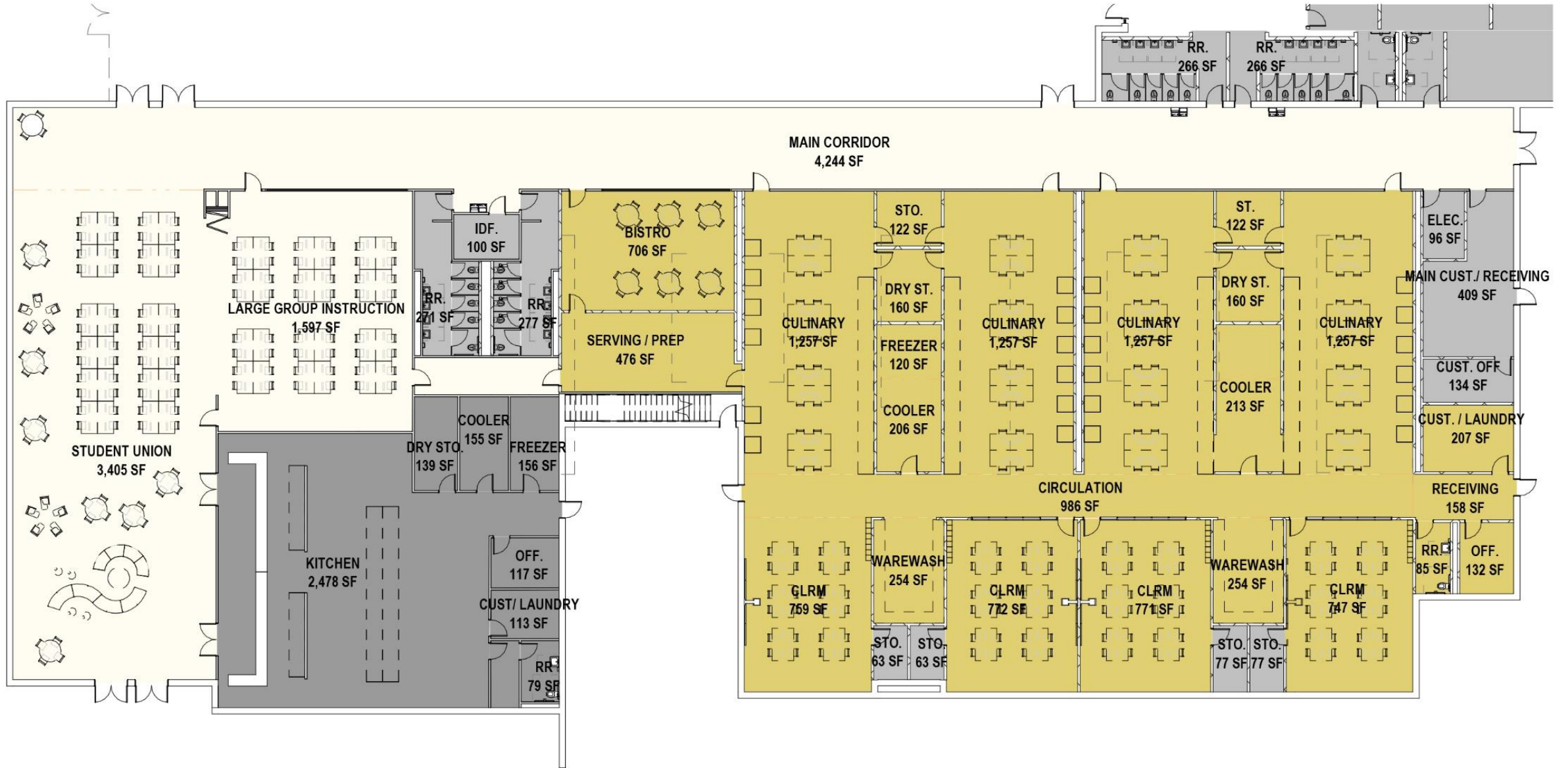
FLOOR PLAN: AUTO COLLISION AND WELDING



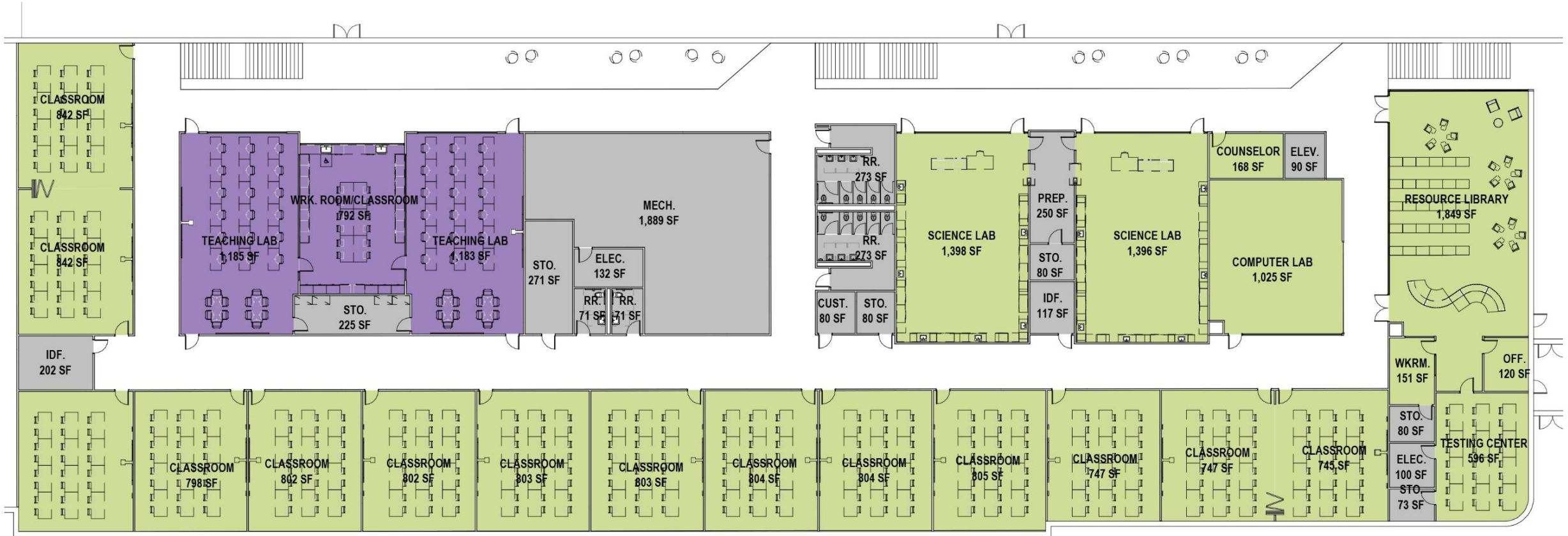
FLOOR PLAN: ENLARGED WELDING



FLOOR PLAN: CULINARY ARTS



FLOOR PLAN: GENERAL STUDIES



5. EXTERIOR DESIGN



exterior : **OVERALL FRONT**



exterior : **OVERALL FRONT**



exterior. **OVERALL FRONT**



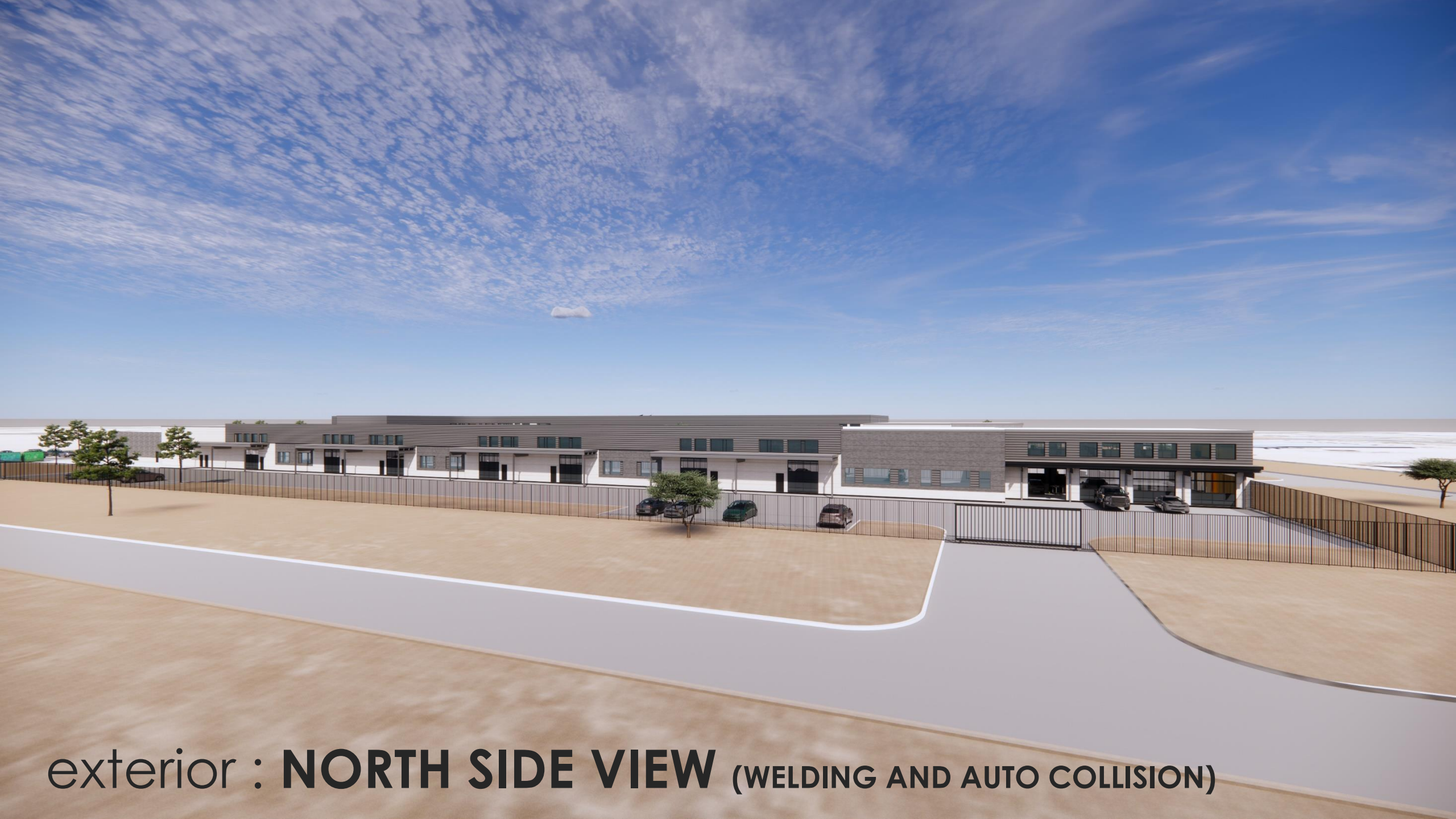
exterior : **OVERALL FRONT**



exterior : **OVERALL FRONT**



exterior : **WEST SIDE VIEW**



exterior : **NORTH SIDE VIEW** (WELDING AND AUTO COLLISION)

exterior : **NORTH SIDE VIEW** (WELDING AND AUTO COLLISION)



exterior : COURTYARD VIEW



exterior : COURTYARD VIEW

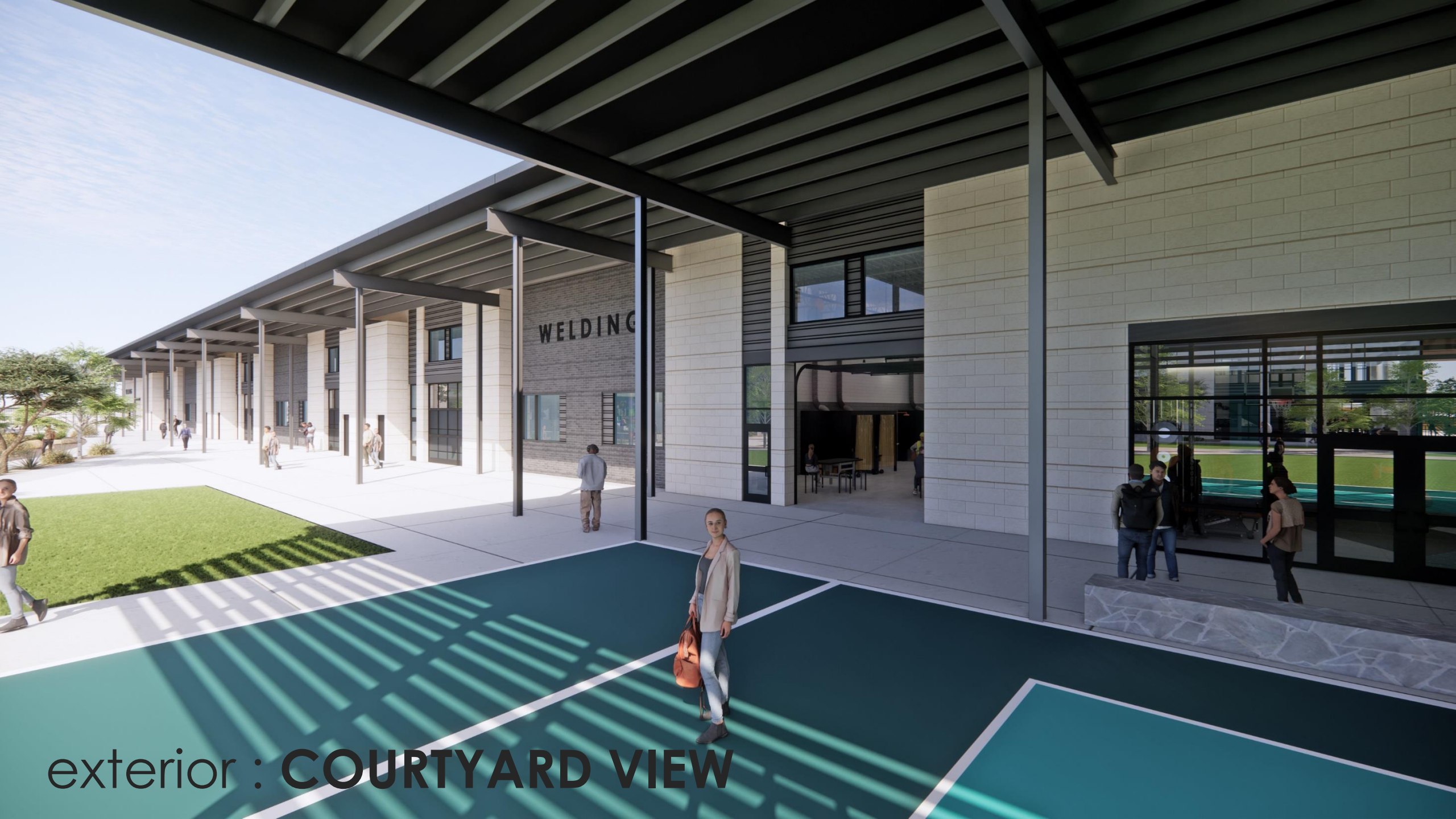




exterior : **COURTYARD VIEW**



exterior : **COURTYARD VIEW**



exterior : **COURTYARD VIEW**

6. INTERIOR DESIGN



ECTOR COUNTY ISD career and technical center

interior: MAIN ENTRY CORRIDOR



interior: **MAIN CORRIDOR**

HEALTH SCIENCE



interior: **MAIN CORRIDOR**



interior: **HEALTH SCIENCE LAB**



interior: **STUDENT UNION**



interior: **STUDENT UNION**

ECISD
CTE CENTER

culinary
arts

Bistro

interior: CORRIDOR AT CULINARY ARTS



E C I S D B I S T R O

interior: CULINARY ARTS BISTRO



interior: **CULINARY ARTS BISTRO**



interior: **FLEX ATHLETICS SPACE**



interior: **AUTO COLLISION REPAIR**



interior: OIL AND GAS LAB



interior: **CONSTRUCTION LAB**



interior: **WAREHOUSE/LOGISTICS LAB**



interior: **AUTOMATION LAB**



interior: **WELDING LAB**



interior: **WELDING LAB**

7. ANIMATION

8. DISCUSSION

THANK YOU!



OUR students...THE future

PRK