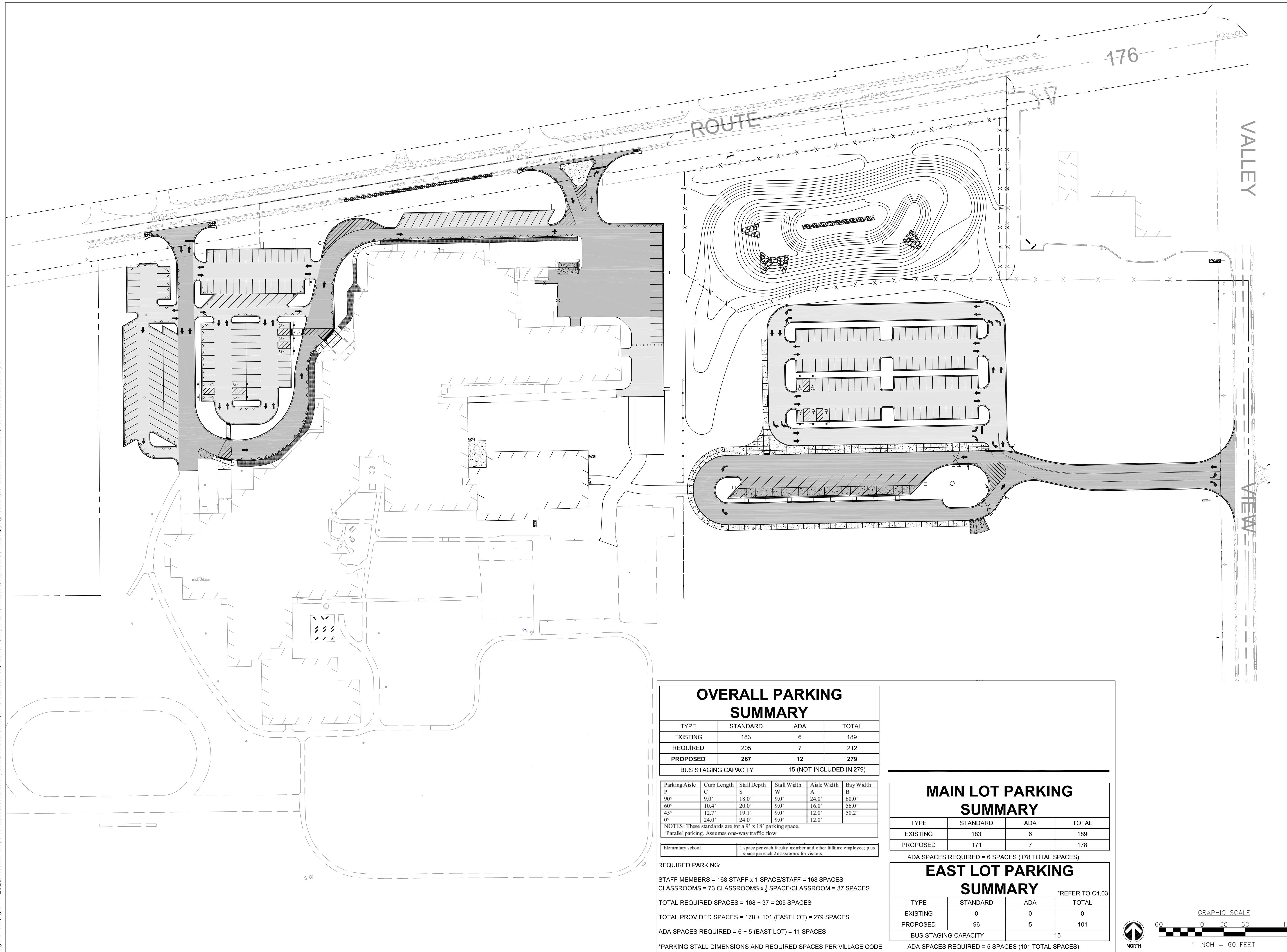


S:\Darlen\Prairie Grove CSD 46\230084_Phase 2B Summer 2024 Additions_Renovations\01 Drawings\02 CD EXHIBITS\230084 C2.EX Overall SITE PLAN.dwg kback Oct 21, 2025 9:33:59 pm

Wight © Copyright All rights reserved. No part of these documents may be reproduced, stored, or transmitted in any form or by any means, electronic, mechanical, photocopying, recording or otherwise, without the prior written consent of Wight.



OVERALL PARKING SUMMARY

TYPE	STANDARD	ADA	TOTAL
EXISTING	183	6	189
REQUIRED	205	7	212
PROPOSED	267	12	279
BUS STAGING CAPACITY		15 (NOT INCLUDED IN 279)	

Parking Aisle	Curb Length	Stall Depth	Stall Width	Aisle Width	Bay Width
P	C	S	W	A	B
90°	9.0'	18.0'	9.0'	24.0'	60.0'
60°	10.4'	20.0'	9.0'	16.0'	56.0'
45°	12.7'	19.1'	9.0'	12.0'	50.2'
0°	24.0'	24.0'	9.0'	12.0'	

NOTES: These standards are for a 9' x 18' parking space.
 1 Parallel parking. Assumes one-way traffic flow.

Elementary school 1 space per each faculty member and other fulltime employee; plus 1 space per each 2 classrooms for visitors.

REQUIRED PARKING:
 STAFF MEMBERS = 168 STAFF x 1 SPACE/STAFF = 168 SPACES
 CLASSROOMS = 73 CLASSROOMS x 1/2 SPACE/CLASSROOM = 37 SPACES
 TOTAL REQUIRED SPACES = 168 + 37 = 205 SPACES
 TOTAL PROVIDED SPACES = 178 + 101 (EAST LOT) = 279 SPACES
 ADA SPACES REQUIRED = 6 + 5 (EAST LOT) = 11 SPACES
 *PARKING STALL DIMENSIONS AND REQUIRED SPACES PER VILLAGE CODE

MAIN LOT PARKING SUMMARY

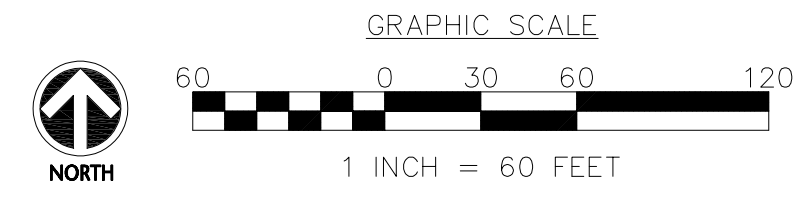
TYPE	STANDARD	ADA	TOTAL
EXISTING	183	6	189
PROPOSED	171	7	178

ADA SPACES REQUIRED = 6 SPACES (178 TOTAL SPACES)

EAST LOT PARKING SUMMARY

TYPE	STANDARD	ADA	TOTAL
EXISTING	0	0	0
PROPOSED	96	5	101
BUS STAGING CAPACITY		15	

ADA SPACES REQUIRED = 5 SPACES (101 TOTAL SPACES)



Prairie Grove Consolidated School District 46



Wight & Company
 wightco.com
 2500 North Frontage Road
 Darien, IL 60561
 P 630.969.7000
 F 630.969.7979

REV DESCRIPTION DATE

PRAIRIE GROVE SCHOOL- SUMMER 2025 IMPROVEMENTS

OVERALL SITE PLAN -

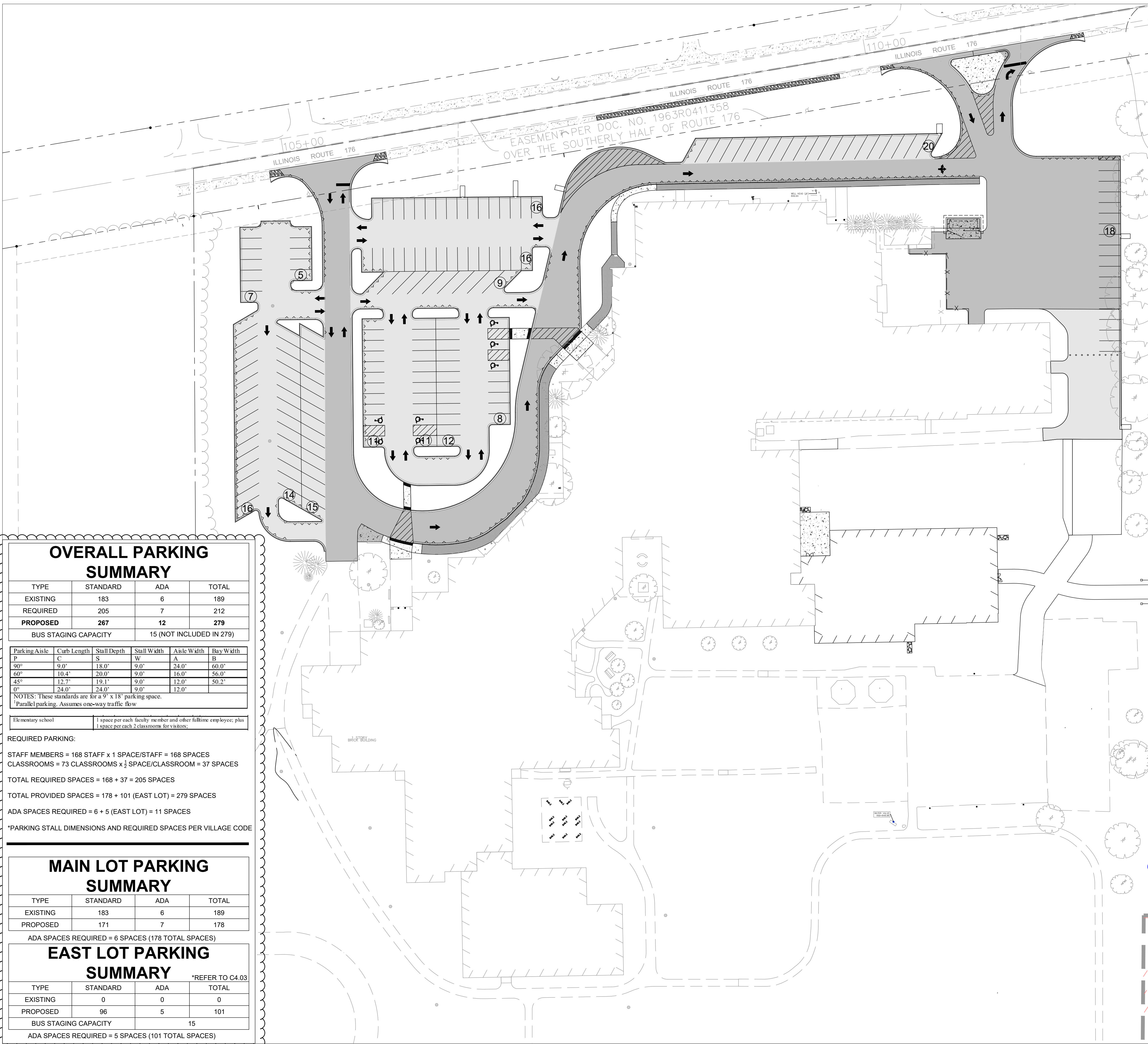
Project Number:
 230084
 Drawn By:
 ZM

Sheet:

C2.EXH

S:\Darien\prairie grove csd 46\230084_phase 2b summer 2024 additions_renovations\011 drawings\02 CD\230084 C2.00 SITE PLAN.dwg kbbuck Aug 29, 2025 10:27:37 am

Wight & Company, Inc. All rights reserved. No part of these documents may be reproduced, stored, or transmitted in any form or by any means, electronic, mechanical, photocopying, recording, or otherwise, without the prior written consent of Wight & Company, Inc.



LEGEND

- HMA PAVEMENT
- HEAVY DUTY HMA PAVEMENT
- HEAVY DUTY CONCRETE PAVEMENT
- CONCRETE SIDEWALK PAVEMENT
- AGGREGATE SHOULDER, TYPE B, 6"
- EROSION CONTROL STONE
- ADD ALTERNATE #1 - CONCRETE SIDEWALK AND STONE BASE REPLACEMENT
- SINGLE FIXTURE LIGHT POLE (SEE ELECTRICAL PLANS)
- DOUBLE FIXTURE LIGHT POLE (SEE ELECTRICAL PLANS)
- PROPERTY LINE
- IDOT RIGHT-OF-WAY
- EASEMENT
- REVERSE PITCHED CURB

SITE KEY NOTES

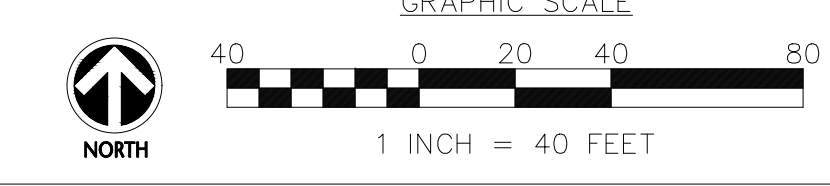
- 1 B6.12 CURB AND GUTTER
- 2 MOUNTABLE CURB
- 3 CURB CUT WITH EROSION CONTROL STONE
- 4 4" SOLID PARKING STRIPE, YELLOW, TYP.
- 5 4" SOLID PARKING STRIPE, 4' O.C., 45° ANGLE, YELLOW, TYP.
- 6 4" SOLID PARKING STRIPE, 4' O.C., 60° ANGLE, YELLOW, TYP.
- 7 ADA PARKING STRIPING, TYP.
- 8 ADA PARKING SYMBOL, REFER TO DETAIL
- 9 CROSSWALK STRIPING, WHITE, 4" SOLID STRIPE, 4' O.C., 45 DEGREE ANGLE
- 10 24" STOP BAR, TRAFFIC WHITE PAINT
- 11 ADA SIGN IN MOVABLE BASE
- 12 ADA SIGN IN POST
- 13 ADA RAMP AND DETECTIBLE WARNINGS
- 14 6' HEIGHT DECORATIVE METAL FENCE WITH PRIVACY PANELS, SEE 1/C5.07
- 15 6' HEIGHT 4' WIDE SINGLE SWING GATE, SEE 2/C5.07
- 16 TRASH/RECYCLING ENCLOSURE, REFER TO ARCHITECTURAL
- 17 TRAFFIC ARROW, TRAFFIC WHITE PAINT
- 18 AGGREGATE SHOULDER TYPE B, 6", ALONG IL 176; MAINTAIN CONSTANT WIDTH
- 19 PARKING LOT BOLLARDS, MAXIFORCE MCSW-SS1-S OR APPROVED EQUAL, WITH FOUNDATION, SEE 3/C5.09
- 20 IDOT TYPE B GUTTER OUTLET 606201
- 21 12LF DOUBLE 4" SOLID YELLOW THERMOPLASTIC PAVEMENT MARKING THROUGH BLACK OUT CROSSWALK
- 22 REPLACE PAVEMENT MARKINGS ACROSS ENTRANCE; 4" SOLID WHITE THERMOPLASTIC
- 23 STOP SIGN; R1-1, 24x24; ON POST
- 24 NO RIGHT TURN SIGN; R3-1, 36x36; ON POST
- 25 NO LEFT TURN SIGN; R3-2, 36x36; ON POST
- 26 RIGHT TURN ONLY SIGN; R3-5, 30x36; ON POST
- 27 DO NOT ENTER SIGN; R5-1, 30x30; ON POST
- 28 FENCE MASONRY PIER, TYP. SEE C4.03
- 29 6' HEIGHT DECORATIVE METAL FENCE, TYP. SEE C4.03
- 30 WAY FINDING SIGNAGE (BY OWNER)

SITE PLAN NOTES

1. ALL EXISTING CURB TO REMAIN UNLESS OTHERWISE SPECIFIED. ANY CURB DAMAGED DURING DEMOLITION SHALL BE REPLACED IN KIND.
2. ALL DIMENSIONS ARE TO THE BACK OF CURB/EDGE OF PAVEMENT UNLESS OTHERWISE SHOWN. ALL RADIUS DIMENSIONS ARE TO THE BACK OF CURB/EDGE OF PAVEMENT.
3. ALL DISTURBED AREAS ON-SITE AND IN THE RIGHT-OF-WAY SHALL BE RESTORED TO EXISTING CONDITION. ALL ITEMS DISTURBED SHALL BE REPLACED INCLUDING ALL LANDSCAPING, CURB, SIDEWALK, PAVEMENT, ETC.
4. ALL EXISTING TREES TO REMAIN AND TO BE PROTECTED UNLESS OTHERWISE NOTED.

LAYOUT NOTE:

1. ALL LAYOUT FOR SITE IMPROVEMENTS SHALL BE COMPLETED BY A PROFESSIONAL LAND SURVEYOR HIRED BY THE CONTRACTOR. LAYOUT SHALL BE COMPLETED USING THE ELECTRONIC CAD FILES PROVIDED BY THE ENGINEER.



OVERALL PARKING SUMMARY

TYPE	STANDARD	ADA	TOTAL
EXISTING	183	6	189
REQUIRED	205	7	212
PROPOSED	267	12	279
BUS STAGING CAPACITY		15 (NOT INCLUDED IN 279)	

Parking Asile	Curb Length	Stall Depth	Stall Width	Asile Width	Bay Width
C	S	W	A	B	
90°	9.0'	18.0'	9.0'	24.0'	60.0'
60°	10.4'	20.0'	9.0'	16.0'	56.0'
45°	12.7'	19.1'	9.0'	12.0'	50.2'
0°	24.0'	24.0'	9.0'	12.0'	

NOTES: These standards are for a 9' x 18' parking space.
 *Parallel parking. Assumes one-way traffic flow.

Elementary school	1 space per each faculty member and other fulltime employee; plus 1 space per each 2 classrooms for visitors.
-------------------	---

REQUIRED PARKING:

STAFF MEMBERS = 168 STAFF x 1 SPACE/STAFF = 168 SPACES
 CLASSROOMS = 73 CLASSROOMS x 1/2 SPACE/CLASSROOM = 37 SPACES

TOTAL REQUIRED SPACES = 168 + 37 = 205 SPACES

TOTAL PROVIDED SPACES = 178 + 101 (EAST LOT) = 279 SPACES

ADA SPACES REQUIRED = 6 + 5 (EAST LOT) = 11 SPACES

*PARKING STALL DIMENSIONS AND REQUIRED SPACES PER VILLAGE CODE

MAIN LOT PARKING SUMMARY

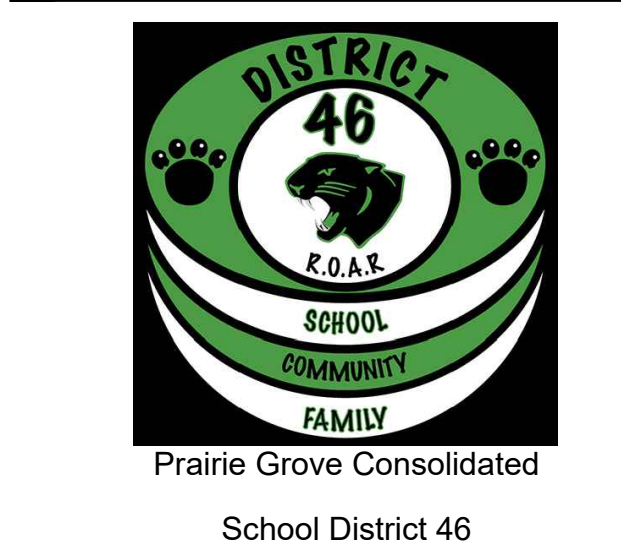
TYPE	STANDARD	ADA	TOTAL
EXISTING	183	6	189
PROPOSED	171	7	178

ADA SPACES REQUIRED = 6 SPACES (178 TOTAL SPACES)

EAST LOT PARKING SUMMARY

TYPE	STANDARD	ADA	TOTAL
EXISTING	0	0	0
PROPOSED	96	5	101
BUS STAGING CAPACITY		15	

ADA SPACES REQUIRED = 5 SPACES (101 TOTAL SPACES)



Wight & Company
 wightco.com
 2500 North Frontage Road
 Darien, IL 60561
 P 630.969.7000
 F 630.969.7979

REV	DESCRIPTION	DATE
-----	-------------	------

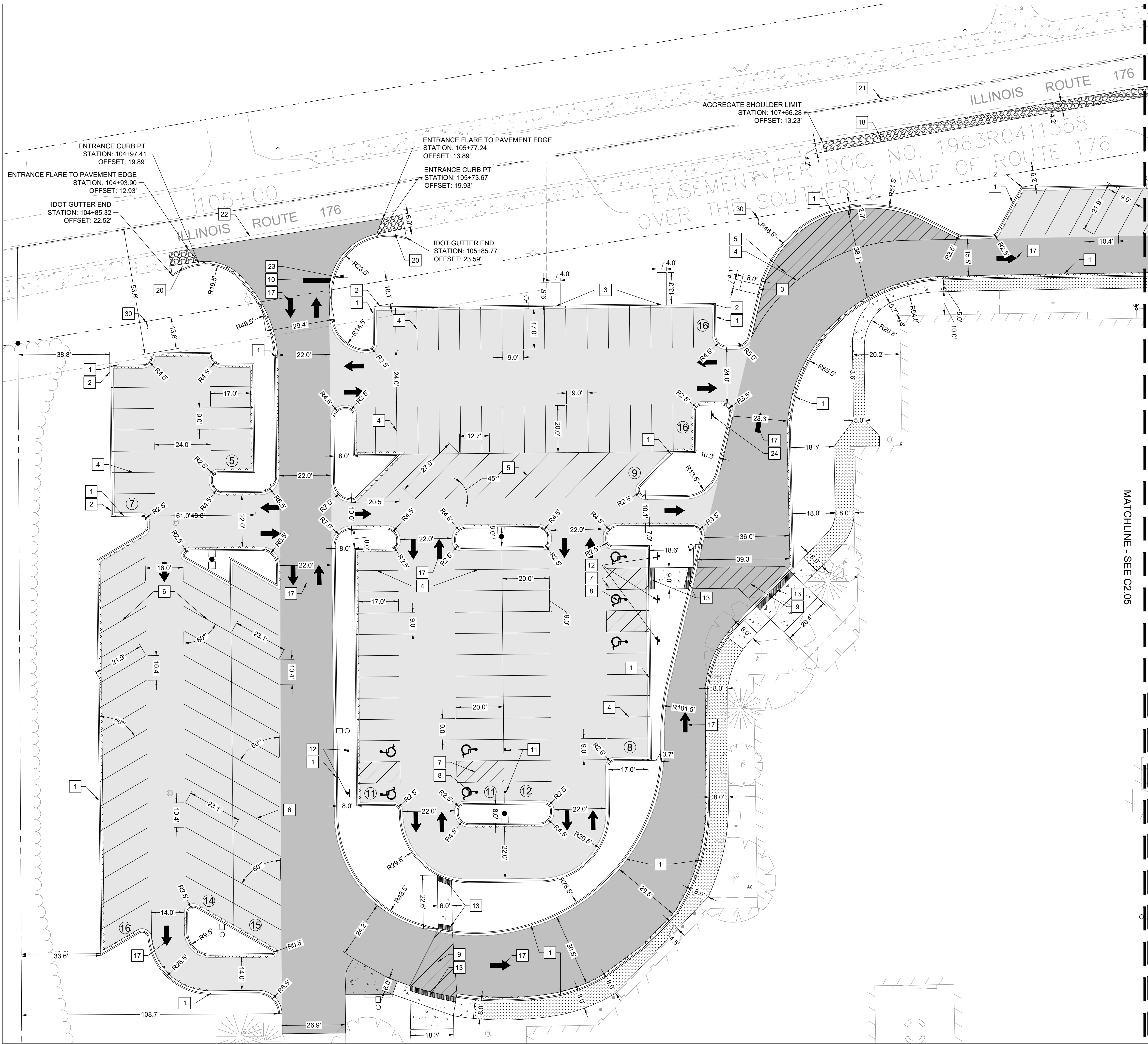
PRAIRIE GROVE SCHOOL- SUMMER 2025 IMPROVEMENTS

OVERALL SITE PLAN - PARKING LOT RENOVATION

Project Number:
 230084
 Drawn By:
 ZM
 Sheet:

C2.03

S:\Darien\prairie grove csd 46\230084_phase 2b summer 2024 additions_renovations\011 drawings\02 CD\230084 C2.00 SITE PLAN.dwg kbbuck Aug 29, 2025 10:27:42 am
 Wight © Copyright All rights reserved. No part of these documents may be reproduced, stored, or transmitted in any form or by any means, electronic, mechanical, photocopying, recording or otherwise, without the prior written consent of Wight.



LEGEND

	HMA PAVEMENT
	HEAVY DUTY HMA PAVEMENT
	HEAVY DUTY CONCRETE PAVEMENT
	CONCRETE SIDEWALK PAVEMENT
	AGGREGATE SHOULDER, TYPE B, 6"
	EROSION CONTROL STONE
	ADD ALTERNATE #1 - CONCRETE SIDEWALK AND STONE BASE REPLACEMENT
	SINGLE FIXTURE LIGHT POLE (SEE ELECTRICAL PLANS)
	DOUBLE FIXTURE LIGHT POLE (SEE ELECTRICAL PLANS)
	PROPERTY LINE
	IDOT RIGHT-OF-WAY
	EASEMENT
	REVERSE PITCHED CURB

SITE KEY NOTES

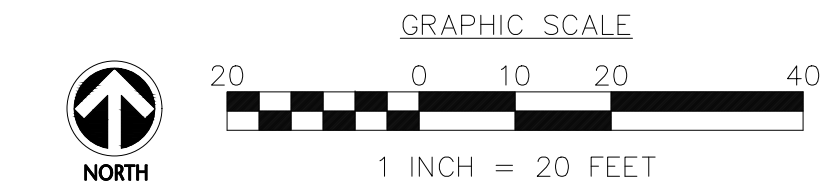
1	B6.12 CURB AND GUTTER
2	MOUNTABLE CURB
3	CURB CUT WITH EROSION CONTROL STONE
4	4" SOLID PARKING STRIPE, YELLOW, TYP.
5	4" SOLID PARKING STRIPE, 4" O.C., 45° ANGLE, YELLOW, TYP.
6	4" SOLID PARKING STRIPE, 4" O.C., 60° ANGLE, YELLOW, TYP.
7	ADA PARKING STRIPING, TYP.
8	ADA PARKING SYMBOL, REFER TO DETAIL
9	CROSSWALK STRIPING, WHITE, 4" SOLID STRIPE, 4" O.C., 45 DEGREE ANGLE
10	24" STOP BAR, TRAFFIC WHITE PAINT
11	ADA SIGN IN MOVABLE BASE
12	ADA SIGN IN POST
13	ADA RAMP AND DETECTIBLE WARNINGS
14	6' HEIGHT DECORATIVE METAL FENCE WITH PRIVACY PANELS, SEE 1/C5.07
15	6' HEIGHT 4" WIDE SINGLE SWING GATE, SEE 2/C5.07
16	TRASH/RECYCLING ENCLOSURE, REFER TO ARCHITECTURAL
17	TRAFFIC ARROW, TRAFFIC WHITE PAINT
18	AGGREGATE SHOULDER TYPE B, 6", ALONG IL 176; MAINTAIN CONSTANT WIDTH
19	PARKING LOT BOLLARDS, MAXIFORCE MCSW-SS1-S OR APPROVED EQUAL, WITH FOUNDATION, SEE 3/C5.09
20	IDOT TYPE B GUTTER OUTLET 606201
21	12LF DOUBLE 4" SOLID YELLOW THERMOPLASTIC PAVEMENT MARKING THROUGH BLACK OUT CROSSWALK
22	REPLACE PAVEMENT MARKINGS ACROSS ENTRANCE; 4" SOLID WHITE THERMOPLASTIC
23	STOP SIGN; R1-1, 24x24; ON POST
24	NO RIGHT TURN SIGN; R3-1, 36x36; ON POST
25	NO LEFT TURN SIGN; R3-2, 36x36; ON POST
26	RIGHT TURN ONLY SIGN; R3-5, 30x36; ON POST
27	DO NOT ENTER SIGN; R5-1, 30x30; ON POST
28	FENCE MASONRY PIER, TYP. SEE C4.03
29	6' HEIGHT DECORATIVE METAL FENCE, TYP. SEE C4.03
30	WAY FINDING SIGNAGE (BY OWNER)

SITE PLAN NOTES

1. ALL EXISTING CURB TO REMAIN UNLESS OTHERWISE SPECIFIED. ANY CURB DAMAGED DURING DEMOLITION SHALL BE REPLACED IN KIND.
2. ALL DIMENSIONS ARE TO THE BACK OF CURB/EDGE OF PAVEMENT UNLESS OTHERWISE SHOWN. ALL RADII DIMENSIONS ARE TO THE BACK OF CURB/EDGE OF PAVEMENT.
3. ALL DISTURBED AREAS ON-SITE AND IN THE RIGHT-OF-WAY SHALL BE RESTORED TO EXISTING CONDITION. ALL ITEMS DISTURBED SHALL BE REPLACED INCLUDING ALL LANDSCAPING, CURB, SIDEWALK, PAVEMENT, ETC.
4. ALL EXISTING TREES TO REMAIN AND TO BE PROTECTED UNLESS OTHERWISE NOTED.

LAYOUT NOTE:

1. ALL LAYOUT FOR SITE IMPROVEMENTS SHALL BE COMPLETED BY A PROFESSIONAL LAND SURVEYOR HIRED BY THE CONTRACTOR. LAYOUT SHALL BE COMPLETED USING THE ELECTRONIC CAD FILES PROVIDED BY THE ENGINEER.



Wight

Wight & Company
 wightco.com
 2500 North Frontage Road
 Darien, IL 60561
 P 630.969.7000
 F 630.969.7979

REV DESCRIPTION DATE

PRAIRIE GROVE SCHOOL- SUMMER 2025 IMPROVEMENTS

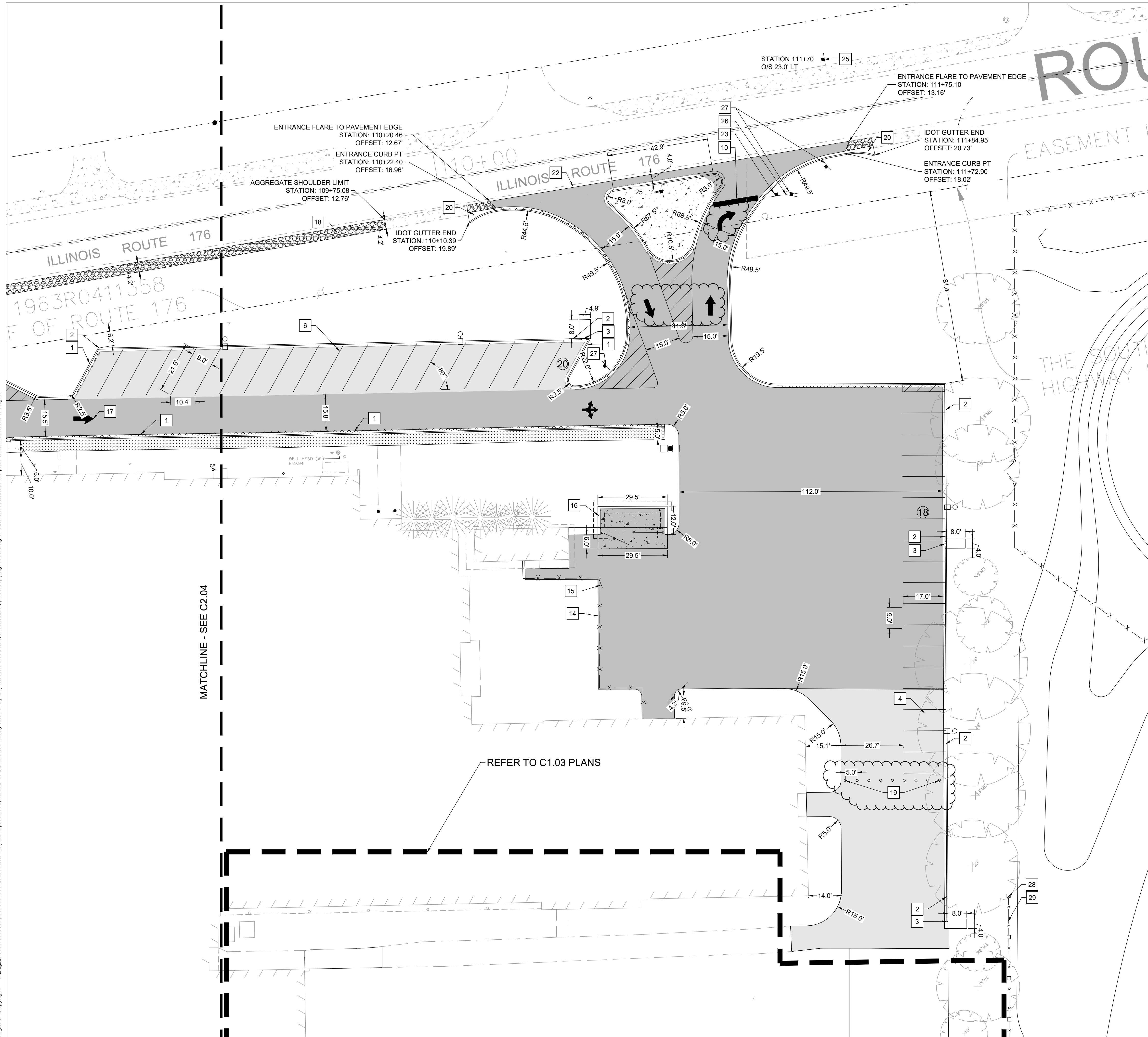
SITE PLAN - PARKING LOT RENOVATION WEST

Project Number:
 230084
 Drawn By:
 ZM
 Sheet:

C2.04

S:\Darien\prairie grove csd 46\230084_phase 2b summer 2024 additions_renovations\011 drawings\02 CD\230084 C2.00 SITE PLAN.dwg kbuck Aug 29, 2025 10:27:47 am

Wight & Company All rights reserved. No part of these documents may be reproduced, stored, or transmitted in any form or by any means, electronic, mechanical, photocopying, recording or otherwise, without the prior written consent of Wight.



LEGEND

	HMA PAVEMENT
	HEAVY DUTY HMA PAVEMENT
	HEAVY DUTY CONCRETE PAVEMENT
	CONCRETE SIDEWALK PAVEMENT
	AGGREGATE SHOULDER, TYPE B, 6"
	EROSION CONTROL STONE
	ADD ALTERNATE #1 - CONCRETE SIDEWALK AND STONE BASE REPLACEMENT
	SINGLE FIXTURE LIGHT POLE (SEE ELECTRICAL PLANS)
	DOUBLE FIXTURE LIGHT POLE (SEE ELECTRICAL PLANS)
	PROPERTY LINE
	IDOT RIGHT-OF-WAY
	EASEMENT
	REVERSE PITCHED CURB

SITE KEY NOTES

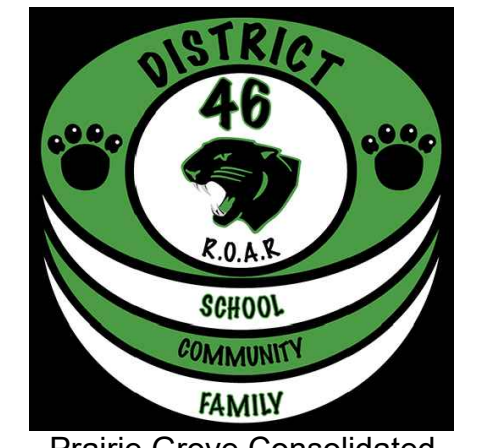
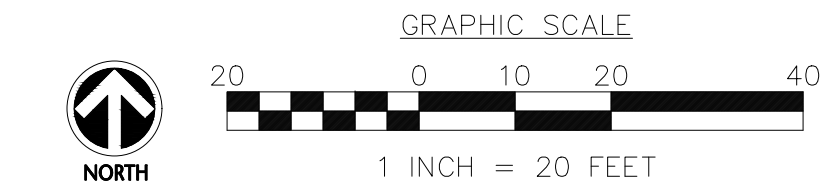
1	B6.12 CURB AND GUTTER
2	MOUNTABLE CURB
3	CURB CUT WITH EROSION CONTROL STONE
4	4" SOLID PARKING STRIPE, YELLOW, TYP.
5	4" SOLID PARKING STRIPE, 4" O.C., 45° ANGLE, YELLOW, TYP.
6	4" SOLID PARKING STRIPE, 4" O.C., 60° ANGLE, YELLOW, TYP.
7	ADA PARKING STRIPING, TYP.
8	ADA PARKING SYMBOL, REFER TO DETAIL
9	CROSSWALK STRIPING, WHITE, 4" SOLID STRIPE, 4" O.C., 45 DEGREE ANGLE
10	24" STOP BAR, TRAFFIC WHITE PAINT
11	ADA SIGN IN MOVABLE BASE
12	ADA SIGN IN POST
13	ADA RAMP AND DETECTIBLE WARNINGS
14	6' HEIGHT DECORATIVE METAL FENCE WITH PRIVACY PANELS, SEE 1/C5.07
15	6' HEIGHT 4" WIDE SINGLE SWING GATE, SEE 2/C5.07
16	TRASH/RECYCLING ENCLOSURE, REFER TO ARCHITECTURAL
17	TRAFFIC ARROW, TRAFFIC WHITE PAINT
18	AGGREGATE SHOULDER TYPE B, 6", ALONG IL 176; MAINTAIN CONSTANT WIDTH
19	PARKING LOT BOLLARDS, MAXIFORCE MCSW-SS1-S OR APPROVED EQUAL, WITH FOUNDATION, SEE 3/C5.09
20	IDOT TYPE B GUTTER OUTLET 606201
21	12LF DOUBLE 4" SOLID YELLOW THERMOPLASTIC PAVEMENT MARKING THROUGH BLACK OUT CROSSWALK
22	REPLACE PAVEMENT MARKINGS ACROSS ENTRANCE; 4" SOLID WHITE THERMOPLASTIC
23	STOP SIGN; R1-1, 24x24; ON POST
24	NO RIGHT TURN SIGN; R3-1, 36x36; ON POST
25	NO LEFT TURN SIGN; R3-2, 36x36; ON POST
26	RIGHT TURN ONLY SIGN; R3-5, 30x30; ON POST
27	DO NOT ENTER SIGN; R5-1, 30x30; ON POST
28	FENCE MASONRY PIER, TYP. SEE C4.03
29	6' HEIGHT DECORATIVE METAL FENCE, TYP. SEE C4.03
30	WAY FINDING SIGNAGE (BY OWNER)

SITE PLAN NOTES

- ALL EXISTING CURB TO REMAIN UNLESS OTHERWISE SPECIFIED. ANY CURB DAMAGED DURING DEMOLITION SHALL BE REPLACED IN KIND.
- ALL DIMENSIONS ARE TO THE BACK OF CURB/EDGE OF PAVEMENT UNLESS OTHERWISE SHOWN. ALL RADII DIMENSIONS ARE TO THE BACK OF CURB/EDGE OF PAVEMENT.
- ALL DISTURBED AREAS ON-SITE AND IN THE RIGHT-OF-WAY SHALL BE RESTORED TO EXISTING CONDITION. ALL ITEMS DISTURBED SHALL BE REPLACED INCLUDING ALL LANDSCAPING, CURB, SIDEWALK, PAVEMENT, ETC.
- ALL EXISTING TREES TO REMAIN AND TO BE PROTECTED UNLESS OTHERWISE NOTED.

LAYOUT NOTE:

- ALL LAYOUT FOR SITE IMPROVEMENTS SHALL BE COMPLETED BY A PROFESSIONAL LAND SURVEYOR HIRED BY THE CONTRACTOR. LAYOUT SHALL BE COMPLETED USING THE ELECTRONIC CAD FILES PROVIDED BY THE ENGINEER.



Prairie Grove Consolidated School District 46



Wight & Company
wightco.com
2500 North Frontage Road
Darien, IL 60561
P 630.969.7000
F 630.969.7979

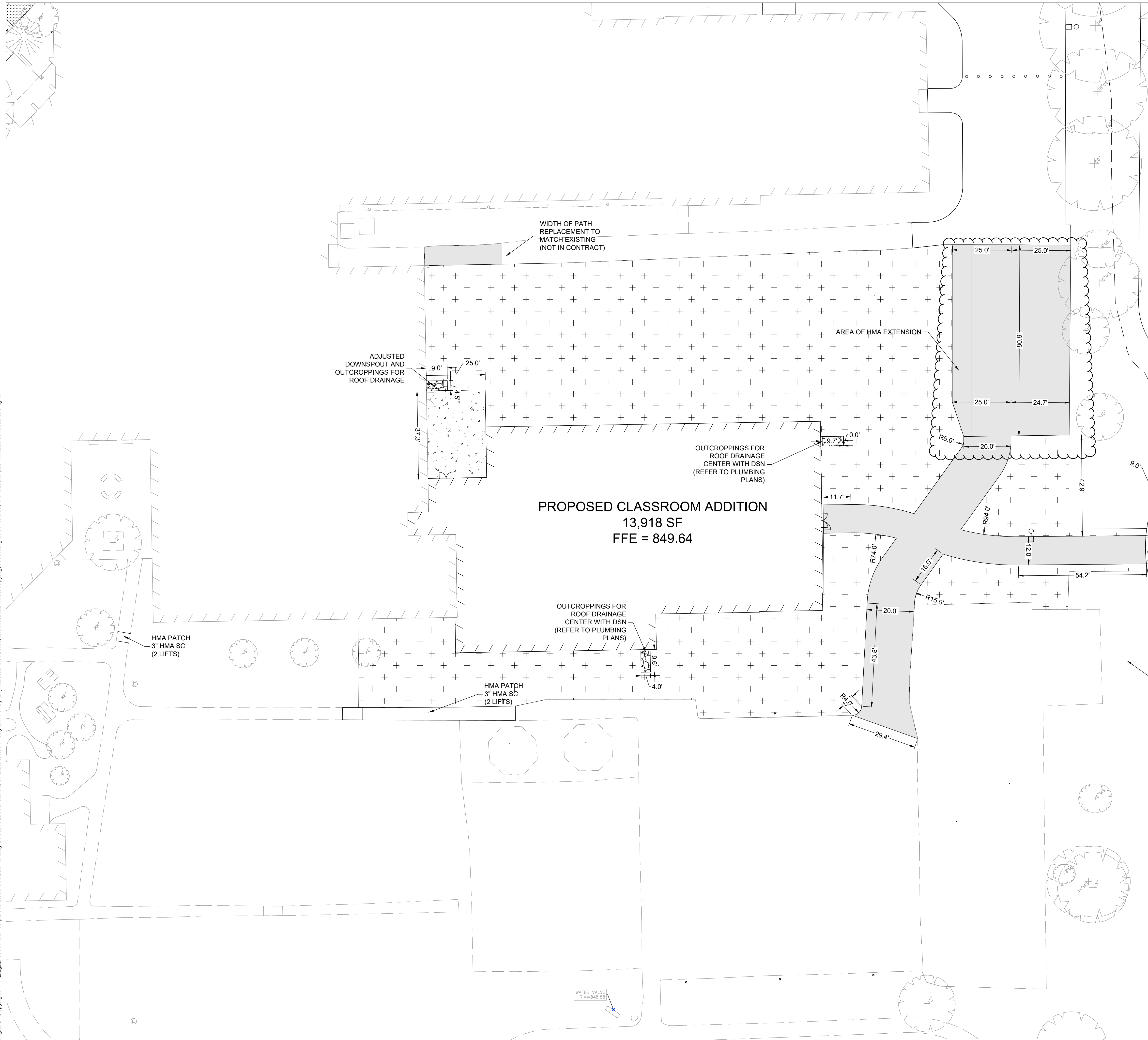
REV	DESCRIPTION	DATE

PRAIRIE GROVE SCHOOL- SUMMER 2025 IMPROVEMENTS




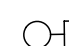

SITE PLAN - PARKING LOT RENOVATION EAST

Project Number:
230084
Drawn By:
ZM
Sheet:

C2.05

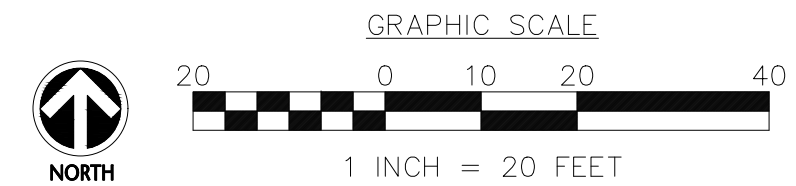


LEGEND

-  HMA PAVEMENT
-  RESTORATION - REFER TO LANDSCAPE PLANS
-  PROPERTY LINE
-  SINGLE FIXTURE LIGHT POLE (SEE ELECTRICAL PLANS)
-  DOUBLE FIXTURE LIGHT POLE (SEE ELECTRICAL PLANS)

- SITE PLAN NOTES**
- ALL EXISTING CURB TO REMAIN UNLESS OTHERWISE SPECIFIED. ANY CURB DAMAGED DURING DEMOLITION SHALL BE REPLACED IN KIND.
 - ALL DIMENSIONS ARE TO THE BACK OF CURB/EDGE OF PAVEMENT UNLESS OTHERWISE SHOWN. ALL RADII DIMENSIONS ARE TO THE BACK OF CURB/EDGE OF PAVEMENT.
 - ALL DISTURBED AREAS ON-SITE AND IN THE RIGHT-OF-WAY SHALL BE RESTORED TO EXISTING CONDITION. ALL ITEMS DISTURBED SHALL BE REPLACED INCLUDING ALL LANDSCAPING, CURB, SIDEWALK, PAVEMENT, ETC.
 - ALL EXISTING TREES TO REMAIN AND TO BE PROTECTED UNLESS OTHERWISE NOTED.

- LAYOUT NOTE:**
- ALL LAYOUT FOR SITE IMPROVEMENTS SHALL BE COMPLETED BY A PROFESSIONAL LAND SURVEYOR HIRED BY THE CONTRACTOR. LAYOUT SHALL BE COMPLETED USING THE ELECTRONIC CAD FILES PROVIDED BY THE ENGINEER.



Wight

Wight & Company
 wightco.com
 2500 North Frontage Road
 Darien, IL 60561
 P 630.969.7000
 F 630.969.7979

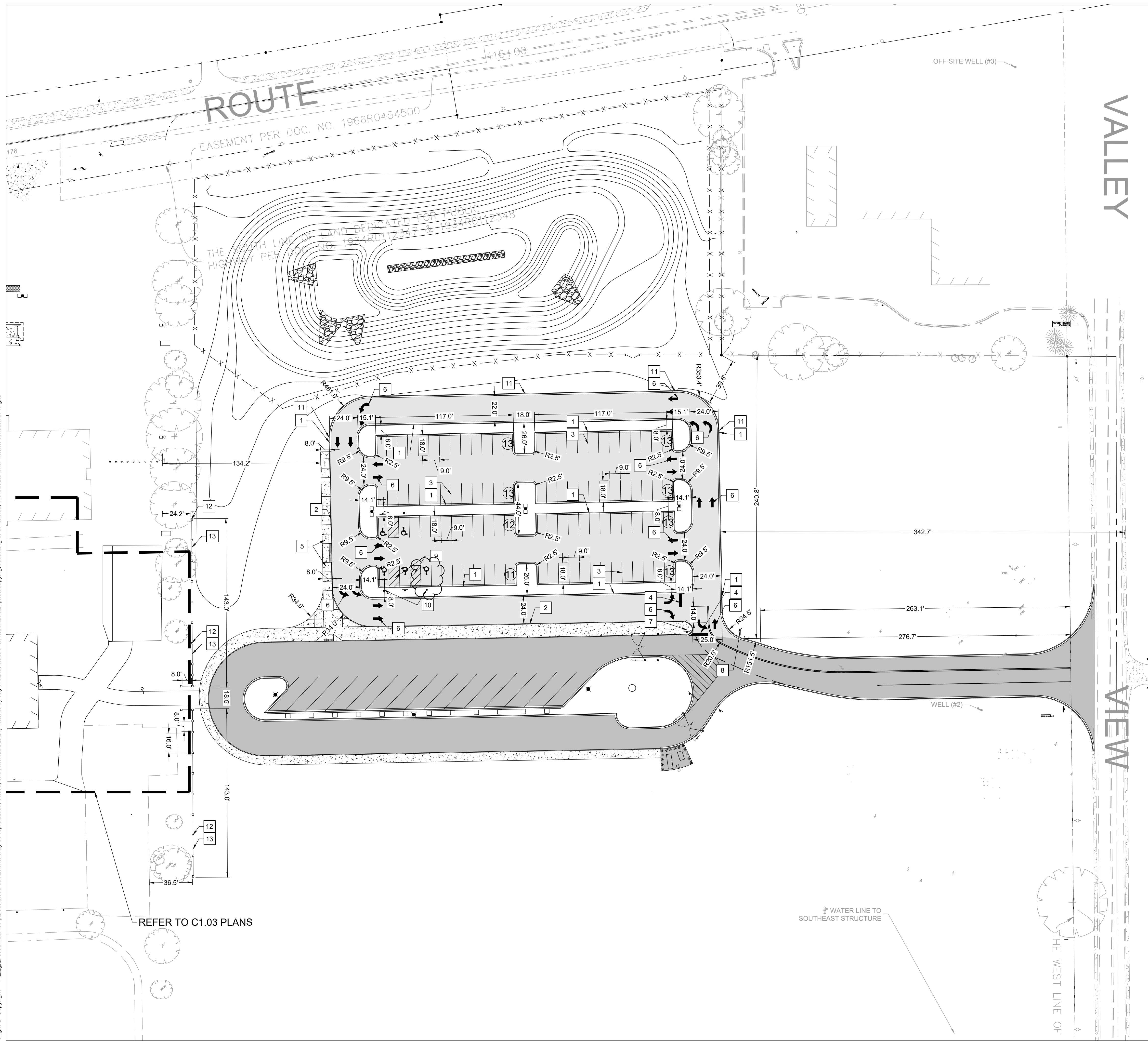
REV	DESCRIPTION	DATE
PRAIRIE GROVE SCHOOL- SUMMER 2025 IMPROVEMENTS		

SITE PLAN - BUILDING ADDITION

Project Number:
 230084
 Drawn By:
 EN
 Sheet:

C1.03

S:\Darien\prairie grove csd 46\230084_phase 2b summer 2024 additions_renovations\011 drawings\02 CD\230084 C2.00 SITE PLAN.dwg kbbuck Aug 29, 2025 10:35:51 am
 Wight © Copyright All rights reserved. No part of these documents may be reproduced, stored, or transmitted in any form or by any means, electronic, mechanical, photocopying, recording or otherwise, without the prior written consent of Wight.



LEGEND

- HMA PAVEMENT
- CONCRETE SIDEWALK PAVEMENT
- PROPERTY LINE
- SINGLE FIXTURE LIGHT POLE (SEE ELECTRICAL PLANS)
- DOUBLE FIXTURE LIGHT POLE (SEE ELECTRICAL PLANS)

SITE KEY NOTES

- 1 B6.12 CURB AND GUTTER
- 2 INTEGRAL CURB AND SIDEWALK
- 3 4" SOLID PARKING STRIPE, 4" O.C., YELLOW, TYP.
- 4 24" STOP BAR, TRAFFIC WHITE PAINT
- 5 ADA RAMP AND DETECTIBLE WARNINGS
- 6 TRAFFIC ARROW, TRAFFIC WHITE PAINT
- 7 STOP SIGN, R1-1
- 8 BUS AND PARENTS DIRECTION SIGN
- 9 ADA PARKING STRIPING, TYP.
- 10 ADA PARKING SIGN AND POST, TYP.
- 11 MOUNTABLE CURB AND GUTTER WITH 3' TRANSITION TO B6.12 (REFER TO GRADING PLAN)
- 12 FENCE MASONRY PIER, TYP. SEE 1/C5.09
- 13 6' HEIGHT DECORATIVE FENCE, TYP.; SEE 2/C5.09

SITE PLAN NOTES

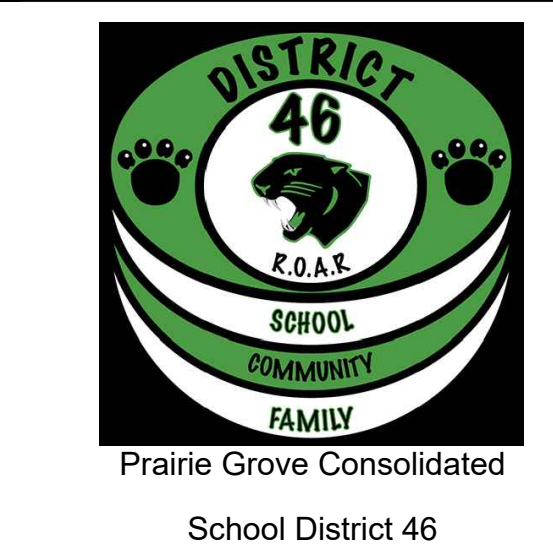
1. ALL EXISTING CURB TO REMAIN UNLESS OTHERWISE SPECIFIED. ANY CURB DAMAGED DURING DEMOLITION SHALL BE REPLACED IN KIND.
2. ALL DIMENSIONS ARE TO THE BACK OF CURB/EDGE OF PAVEMENT UNLESS OTHERWISE SHOWN. ALL RADIUS DIMENSIONS ARE TO THE BACK OF CURB/EDGE OF PAVEMENT.
3. ALL DISTURBED AREAS ON-SITE AND IN THE RIGHT-OF-WAY SHALL BE RESTORED TO EXISTING CONDITION. ALL ITEMS DISTURBED SHALL BE REPLACED INCLUDING ALL LANDSCAPING, CURB, SIDEWALK, PAVEMENT, ETC.
4. ALL EXISTING TREES TO REMAIN AND TO BE PROTECTED UNLESS OTHERWISE NOTED.

LAYOUT NOTE:

1. ALL LAYOUT FOR SITE IMPROVEMENTS SHALL BE COMPLETED BY A PROFESSIONAL LAND SURVEYOR HIRED BY THE CONTRACTOR. LAYOUT SHALL BE COMPLETED USING THE ELECTRONIC CAD FILES PROVIDED BY THE ENGINEER.

PARKING SUMMARY TABLE

	STANDARD	ADA	TOTAL
PROPOSED	96	5	101

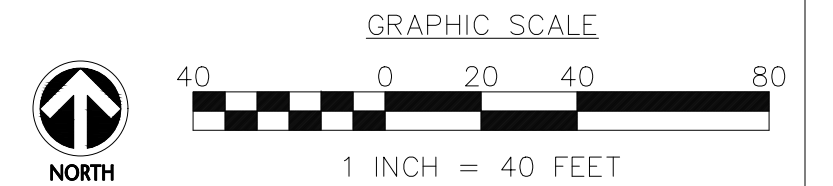


Wight & Company
 wightco.com
 2500 North Frontage Road
 Darien, IL 60561
 P 630.969.7000
 F 630.969.7979

PRAIRIE GROVE SCHOOL- SUMMER 2025 IMPROVEMENTS

SITE PLAN - NEW PARKING LOT

Project Number:
 230084
 Drawn By:
 ZM
 Sheet:



C4.03