

SCHEMATIC DESIGN PRESENTATION

ELEMENTARY SCHOOL #25 – SANDBROCK RANCH DEVELOPMENT

SEPTEMBER 22, 2020

ESTABLISHMENT OF GMP: JANUARY 2021

AGENDA / MAIN TOPICS

- Design Motivation & Influences
- Design Response

DESIGN MOTIVATION & INFLUENCES




- Design Principles
- Context & Identity
- Aesthetic

DESIGN PRINCIPLES

CORE OBJECTIVES

- Create a school that promotes equity within the district, meets budget and timeline expectations, and is a good neighbor to the community
- Maintain a low maintenance and low-operational cost facility
- Continue to improve on the building's energy performance
- Develop a consistent architectural & interior design response that complements the Sandbrock Ranch development
- Implement strategies to mitigate the spread of COVID-19 and other viral infections
- Incorporate measures to improve safety & security for occupants
- Improve on daylighting systems compared to previous iterations of same school prototype
- Develop landscape design approach to improve views to nature, block glare and filter light
- Implement a simple and restrained selection of materials. Develop a design approach that will promote consistency between the exterior architectural expression and interior design

SITE

-  Main entry / exit points to development
-  Sandbrock Ranch Community / Amenity Center
-  DISD Elementary School #25 Site

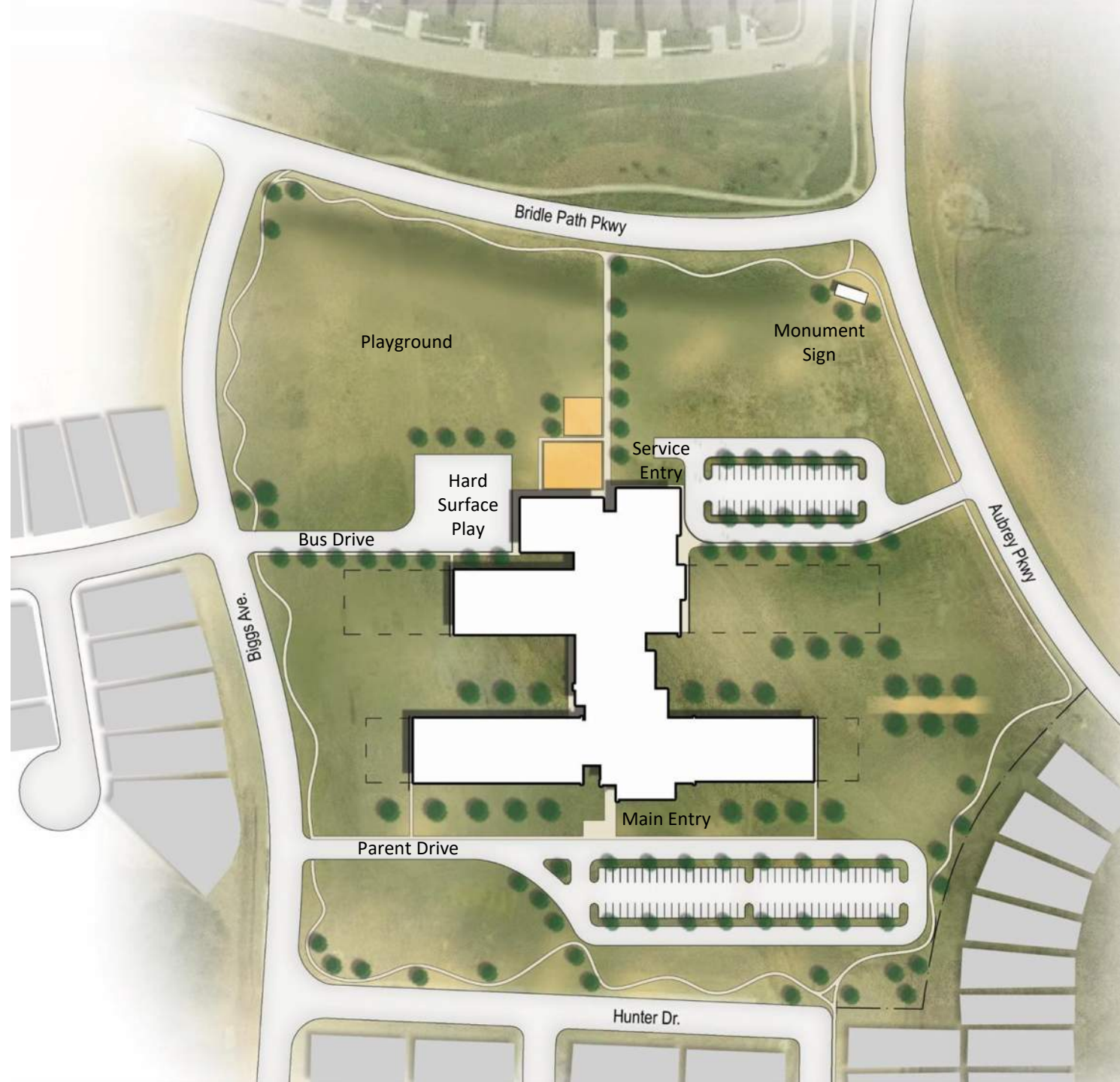


DEVELOPMENT PLAN



SITE LAYOUT & BUILDING ORIENTATION

- Main school entry facing south to place playground nearest community
- Library & Dining facing east toward main public drive
- Main vehicular access to campus:
 - east on Bridle Path Parkway
 - south on Aubrey Parkway



FLOOR PLAN & BUILDING ORIENTATION

- **Building Area: 87,800 SF**
- Maintain overall building organization
- Mirror building so that public spaces address community
- Repurpose excess storage areas to accommodate paraprofessionals and support pullout programs
- Like Union Park Elementary, provide storm shelter to serve building occupants



COMMUNITY & CONTEXT IDENTITY

SANDBROCK RANCH DEVELOPMENT COMMUNITY / AMENITY CENTER





- Gable roof profile
- Prominence or presence of roof planes
- Layering of building & roof planes
- Roof lantern



- Gable roof profile
- Prominence or presence of roof planes
- Layering of building & roof planes
- Roof lantern



- Light tower as development icon
- Fencing displaying equestrian "x" motif



- Grey-Blue standing seam metal roof
- Light grey & tan Lueders limestone
- White fiber cement siding & battens
- Dark aluminum frame windows



- Grey-Blue standing seam metal roof
- Light grey & tan Lueders limestone
- White fiber cement siding & battens
- Black / dark aluminum frame windows



- Warm color material palette inside & out



- Grey-Blue color on selected surfaces
- Exposed timber trusses
- Skylight / roof lanterns

COMMUNITY & CONTEXT IDENTITY

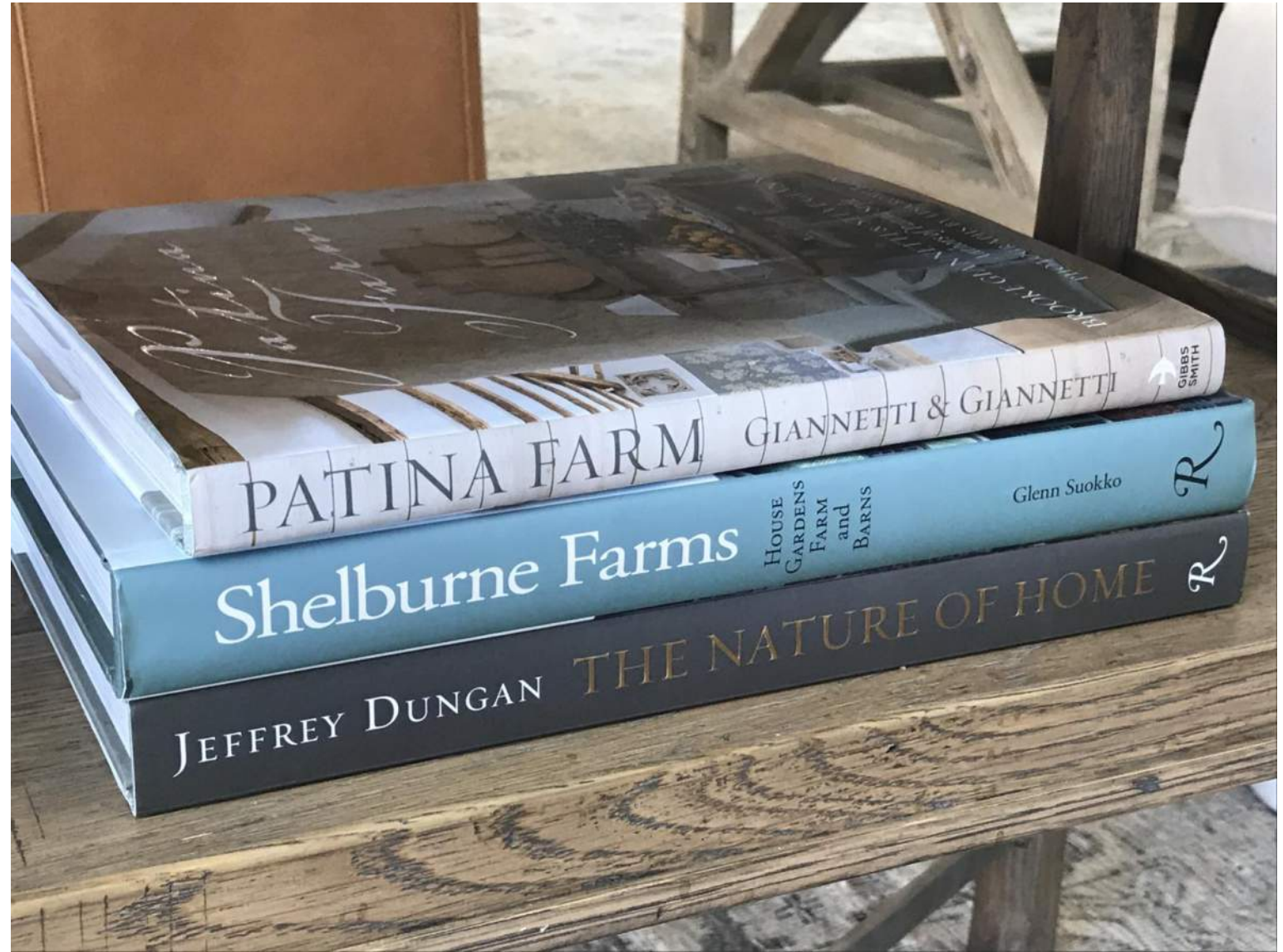
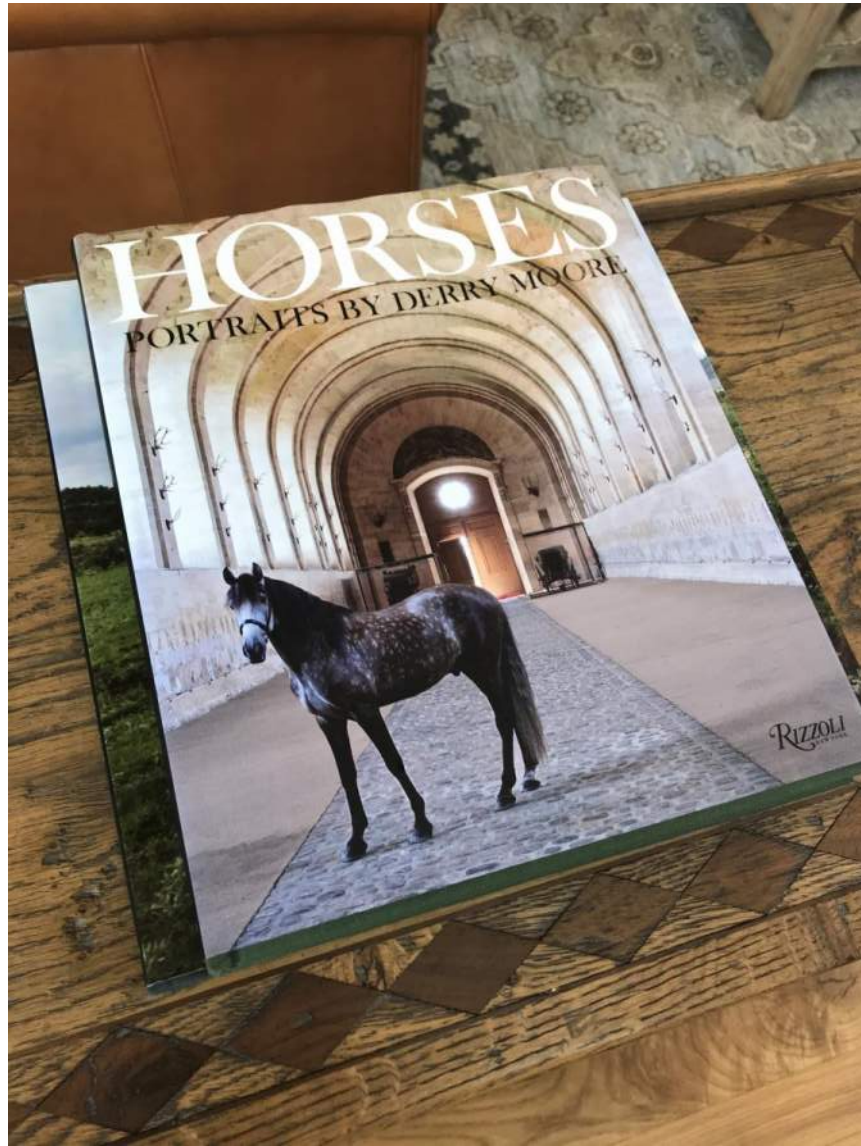
SANDBROCK RANCH DEVELOPMENT COMMUNITY / AMENITY CENTER

- Gable roof profile
- Prominence or presence of roof planes
- Layering of building & roof planes
- Roof lanterns (icons)
- Fencing displaying equestrian “x” motif
- Simplicity and limited selection of materials
 - Exterior:
 - Grey-Blue standing seam metal roof
 - Light grey & tan Lueders limestone
 - White fiber cement siding & battens
 - Black / dark aluminum frame windows
 - Interior:
 - Warm color material palette inside & out
 - Grey-Blue feature color on selected interior surfaces
 - Exposed timber trusses
 - Skylight / roof lanterns

AESTHETIC

EQUESTRIAN RANCHES & FACILITIES

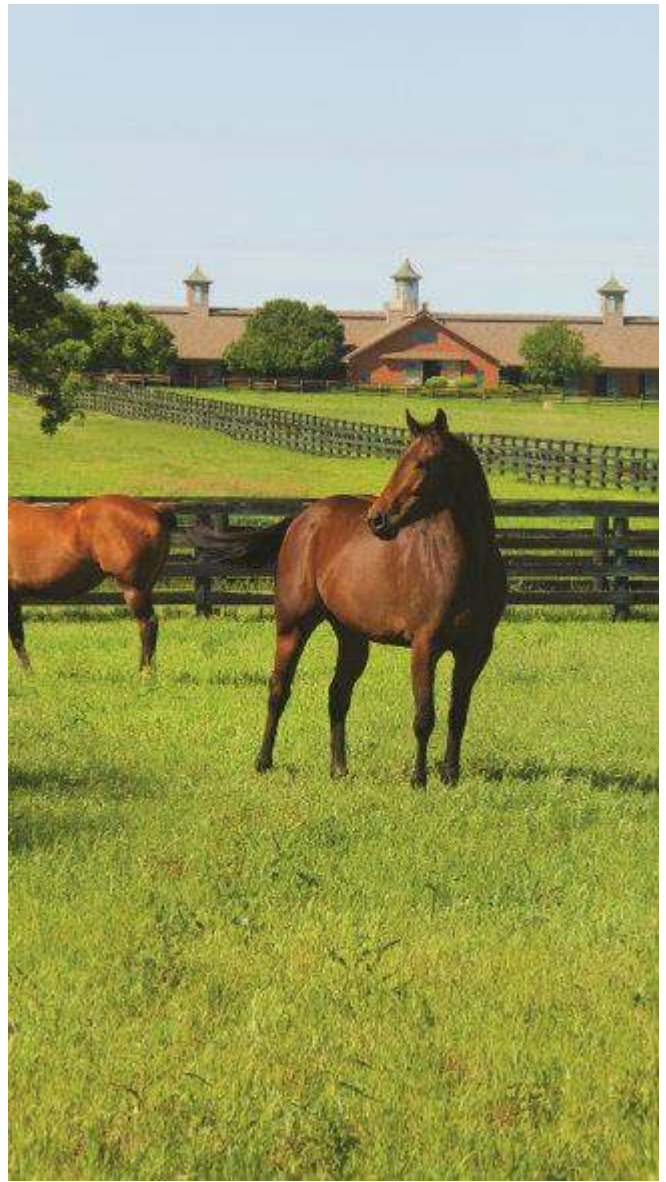




- Strong equestrian references



- Simplicity of building form
- Gable roof profile
- Simple articulation of roof planes
- Roof lanterns & spires as equestrian reference



- Simplicity of building form
- Gable roof profile
- Simple articulation of roof planes
- Roof lanterns & spires as equestrian reference



- Exposed roof framing structure
- Simple articulation of roof planes
- Simple material palette
- Durable material selection



- Exposed roof framing structure
- Simple articulation of roof planes
- Simple material palette
- Durable material selection



- Exposed roof framing structure
- Simple & durable material palette
- Distinct circulation & transition floor patterns



- Warm color material selection
- Exposed roof framing structure
- Distinct circulation & transition floor patterns
- Use of skylights

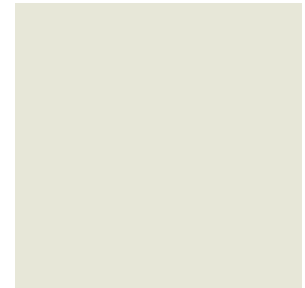
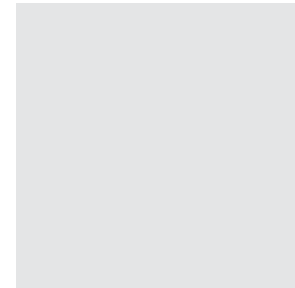
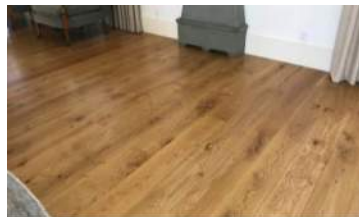
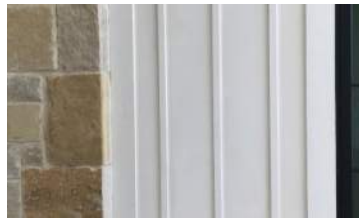
AESTHETIC

EQUESTRIAN RANCHES & FACILITES

- Equestrian references
- Simplicity of building form
- Gable roof profile
- Simple articulation of roof planes
- Exposed (celebration) roof framing
- Durable material selection
- Simple exterior material palette:
 - Stone
 - Wood
 - Metal panels
- Warm interior colors & material selection
- Distinct circulation & transition floor patterns
- Use of skylights

DESIGN RESPONSE

- Exterior Material Palette



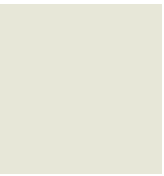
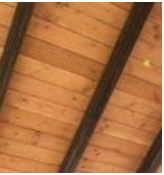
DESIGN RESPONSE

- Building Entry
- Exterior Design





Exterior View – Main Entry



Exterior View – Academic Wing (End Wall)



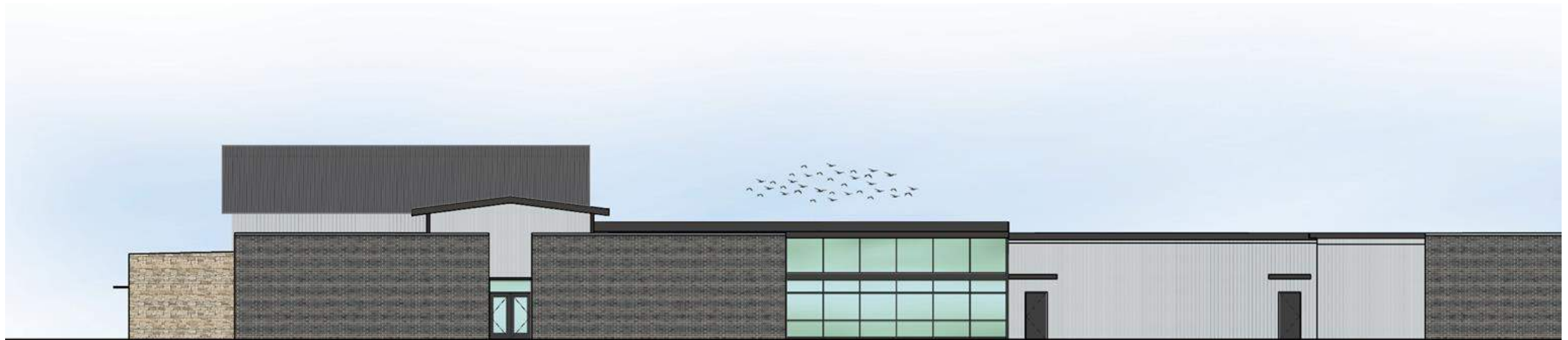
South Elevation (Main Entry)



East Elevation (Library & Dining Side)



Partial South Elevation (Main Entry Close-Up)



Partial South Elevation (Library Close-Up)



Interior View – Main Lobby / Corridor



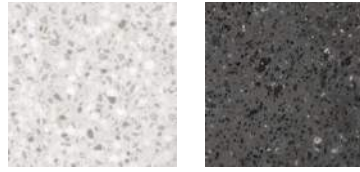
DESIGN RESPONSE

- Simple building form: Gable roof profile
- Building that wants to be discovered
- Exposed roof structure / framing:
 - Combination of wood beams and steel rods
 - Exposed wood decking
- Exterior material palette:
 - Brick: Ebonite Velour (gray-blue tone)
 - Stone: Lueders Chopped Stone
 - Metal (wall): Wall metal panels Pac-Clad, Stone White
 - Metal (roof): Pac-Clad Snap-Clad Standing Seam
 - Glass
- Warm interior colors & material selection

INTERIOR FINISH PALETTE



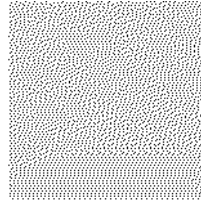
Restroom Accent Wall Tile



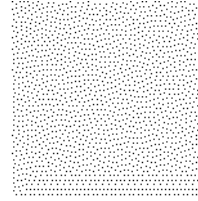
Solid Surface Counter



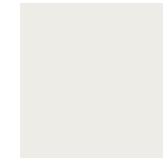
RR Partition



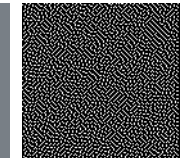
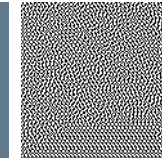
ES 24 Admin Field
PPG Fog



ES 24 Field Paint
PPG Gypsum



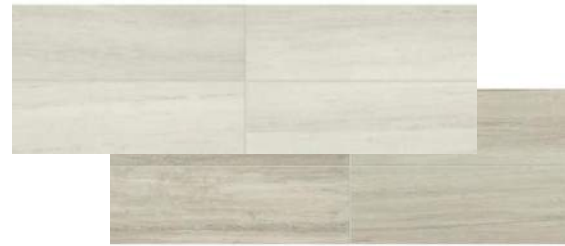
Accent Paints



Restroom Floor Tile



Sink Wall Mosaic Tile



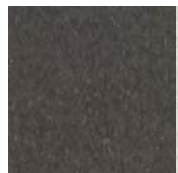
Corridor Wainscot/Restroom Wall Tile



Plastic Laminate Casework



Plastic Laminate Countertops



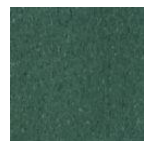
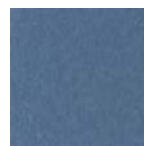
Vestibule



Corridor



Classroom

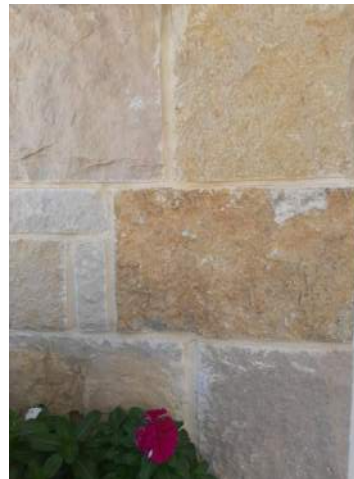


Classroom
Corridor Accents



Main Corridor

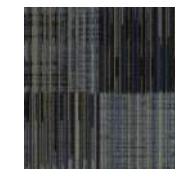
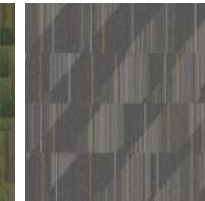
Vestibule



Sandbrock Amenity Building - Reference Materials



Carpet Options



Carpet - Union Park



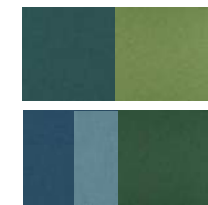
Tackboard



Rubber Base



Gym Floor



Acoustical Panels



Kitchen Quarry Tile

INTERIOR FINISH MATERIALS



FLOOR FINISH PLAN

