

## Conceptual Engineer's Opinion of Probable Costs

### William Hatch Elementary School

Oak Park, IL

September 15, 2014



#### Division A - Site Demolition

Item	Description	Unit	Quantity	Unit Price	Extended Price
	Remove Existing Vegetation & Landscaping	LS	1	\$750.00	\$750.00
	Saw Cut (Full Depth)	LF	130	\$4.50	\$585.00
	Bit. Pavement Removal (Bit. Layer Only)	SY	115	\$15.00	\$1,725.00
	Bit. Pavement Removal (Full Depth)	SY	300	\$25.00	\$7,500.00
	Re-Grade Existing Subgrade	SY	300	\$15.00	\$4,500.00
	Remove Handrail & Dispose	LF	40	\$10.00	\$400.00
	Concrete Curb Removal	LF	45	\$10.00	\$450.00
	Concrete Sidewalk Removal	SY	100	\$20.00	\$2,000.00
	Remove Existing Signage	Ea.	1	\$200.00	\$200.00
	Off Site Disposal	LS	1	\$2,000.00	\$2,000.00
	<b>Subtotal</b>				<b>\$20,110.00</b>

#### Division B - Site Pavement Improvements

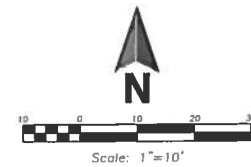
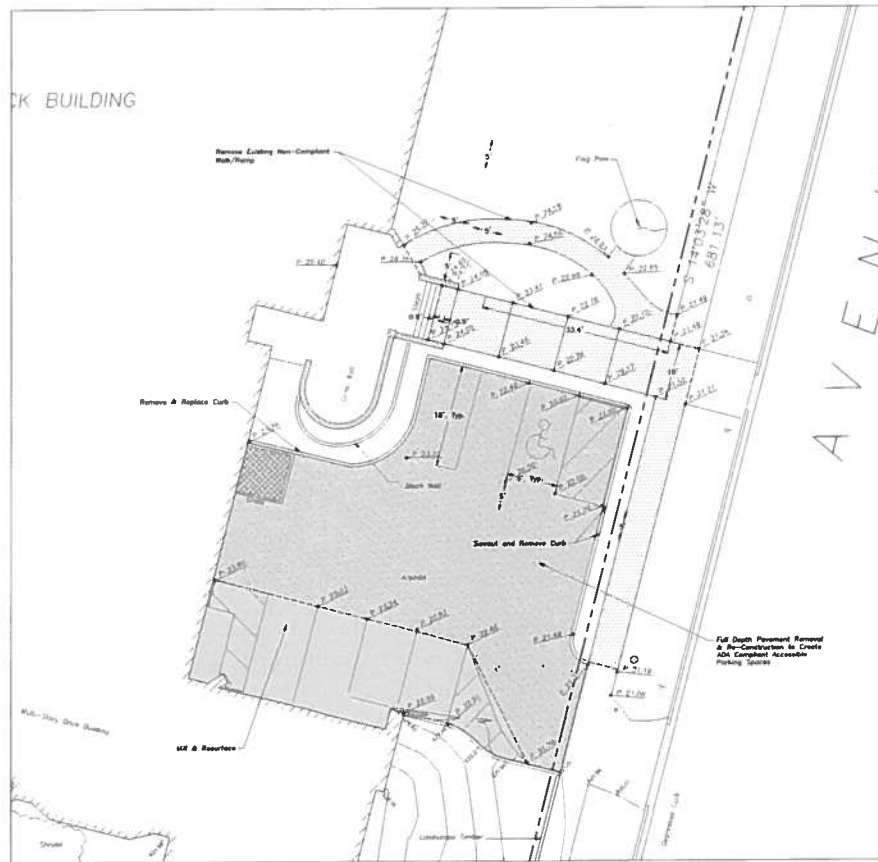
Item	Description	Unit	Quantity	Unit Price	Extended Price
	Bituminous Surface Course Only	SY	115	\$20.00	\$2,300.00
	Full Depth Pavement Section	SY	300	\$50.00	\$15,000.00
	Pavement Striping	LS	1	\$2,000.00	\$2,000.00
	Concrete Curb	LF	45	\$20.00	\$900.00
	Concrete Sidewalk	SY	110	\$65.00	\$7,150.00
	Concrete Steps	LS	1	\$1,000.00	\$1,000.00
	Retaining Wall (Pour in Place)	LF	21	\$175.00	\$3,675.00
	Handrail Free Standing	LF	115	\$175.00	\$20,125.00
	<b>Subtotal</b>				<b>\$52,150.00</b>

#### Division C - Misc.

Item	Description	Unit	Quantity	Unit Price	Extended Price
	Accessible Parking Space Sign And Installation	Ea.	2	\$750.00	\$1,500.00
	Seeding & Landscape Restoration	LS	1	\$5,000.00	\$5,000.00
	Erosion Control Measures	LS	1	\$1,200.00	\$1,200.00
	<b>Subtotal</b>				<b>\$7,700.00</b>

Total Costs from Above	\$79,960.00
10% General Conditions	\$7,996.00
15% Contingency	\$11,994.00
Subtotal	\$99,950.00
12% A/E Fees	\$11,994.00
<b>Opinion of Total Construction Costs</b>	<b>\$111,944.00</b>

Note: This opinion of probable construction costs is based on quantities and unit prices assumed by the engineer based on data from previous construction projects, and will not necessarily reflect actual bid prices.



#### LEGEND

EXISTING	NOTED	PROPOSED
○	Manhole	
⊙	Clean Out	
△	Area Drain	
○ <sub>1/2</sub>	Clean Out	
△ <sub>1/2</sub>	Fire Hydrant	
—	Top	
—	Fence	
—	Asphalt Paving Mat	
—	Curb & Gutter	
—	Depressed Curb	
—	Curb Elevation	— 751.20
—	Gutter Elevation	— 751.20
—	Pavement Elevation	— 751.15
—	Storm Elevation	— 751.10
—	Ground Elevation	— 751.0
—	Top of Retaining Wall Elevation	— 751.20
—	Center Line	—
—	Division Tree	—
—	Division Tree	—
—	Tree Protection	—
—	Fencing at Dry Line	—

#### DEMOLITION LEGEND

	Bituminous Pavement Removal (Full Depth)
	Bituminous Pavement Removal (MS & Resurface)
	Concrete Pavement Removal (Full Depth)
	Pavement Seccut
	Curb & Gutter Removal



**ERIKSSON  
ENGINEERING  
ASSOCIATES, LTD.**

148 BONNER DRIVE, SUITE A  
 GRAYSLAKE, ILLINOIS 60050  
 Phone: (847) 898-0004  
 Fax: (847) 898-0004  
 Email: INFO@ERIKS-LLC.COM  
 Professional Engineer, Design Firm  
 License No. 184-002880  
 Expires: 04/20/2018

**WILLIAM HATCH  
ELEMENTARY SCHOOL  
ORLAND PARK SCHOOL DISTRICT 97  
1000 N. Ridgeland Ave,  
Oak Park, Illinois**

Reserved for Seal:

Expiration Date:

No.	Date	Description

Design By:	Date:
Approved By:	Project No.:

Sheet Title:  
**CONCEPTUAL  
DEMOLITION  
PLAN**

Sheet No.:  
**C-1**

**NOT FOR CONSTRUCTION**





## Conceptual Engineer's Opinion of Probable Costs

### Lincoln Elementary School

Oak Park, IL

September 15, 2014



Division A - Site Demolition					
Item	Description	Unit	Quantity	Unit Price	Extended Price
	Saw Cut (Full Depth)	LF	35	\$4.50	\$157.50
	Concrete Sidewalk Removal	SY	30	\$20.00	\$600.00
	Remove Existing Ramp Walls / Footings / Handrail	LF	38	\$100.00	\$3,800.00
	Off Site Disposal	LS	1	\$500.00	\$500.00
	<b>Subtotal</b>				<b>\$5,057.50</b>

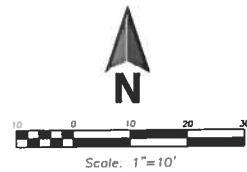
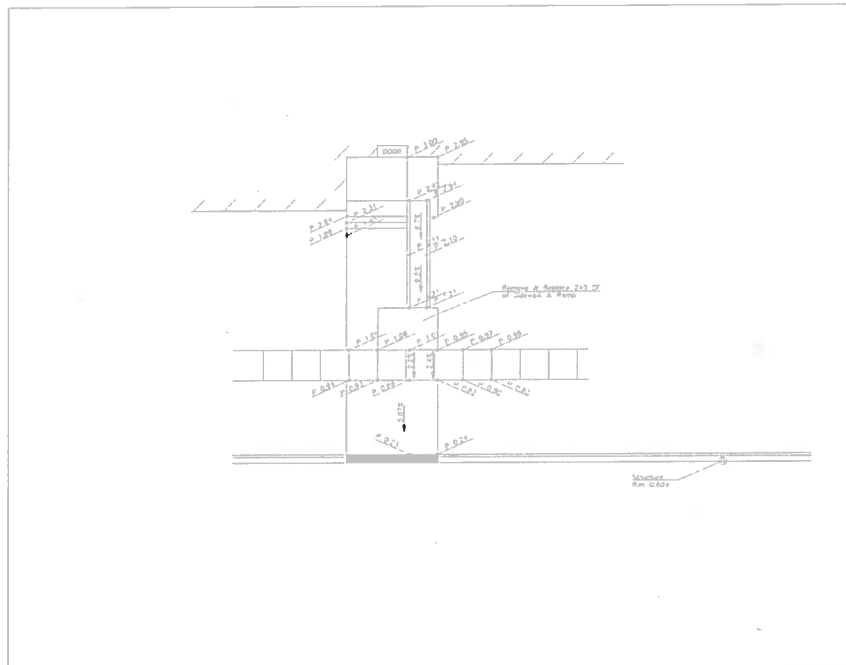
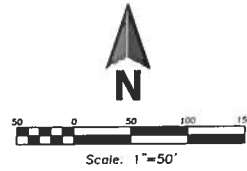
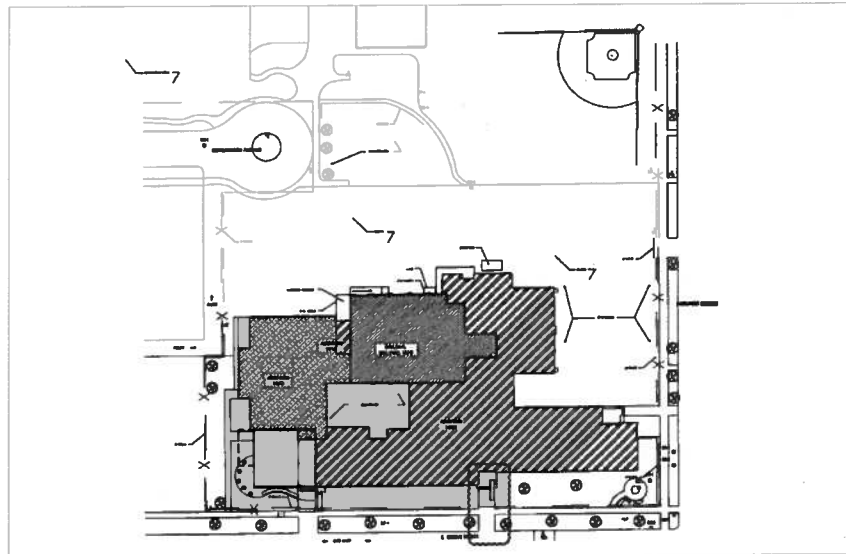
Division B - Site Pavement Improvements					
Item	Description	Unit	Quantity	Unit Price	Extended Price
	Concrete Sidewalk	SY	30	\$65.00	\$1,950.00
	Ramp Retaining Wall (Pour in Place)	LF	48	\$175.00	\$8,400.00
	Handrail	LF	50	\$175.00	\$8,750.00
	<b>Subtotal</b>				<b>\$19,100.00</b>

Division C - Misc.					
Item	Description	Unit	Quantity	Unit Price	Extended Price
	Seeding & Landscape Restoration	LS	1	\$750.00	\$750.00
	Erosion Control Measures	LS	1	\$500.00	\$500.00
	<b>Subtotal</b>				<b>\$1,250.00</b>

	Total Costs from Above				\$25,407.50
	10% General Conditions				\$2,541.00
	15% Contingency				\$3,811.00
	Subtotal				\$31,759.50
	12% A/E Fees				\$3,811.14
	<b>Opinion of Total Construction Costs</b>				<b>\$35,571.00</b>

Note: This opinion of probable construction costs is based on quantities and unit prices assumed by the engineer based on data from previous construction projects, and will not necessarily reflect actual bid prices.

EA - n:\gmp\04\_Park\_Schools\_Accessibility\Drawings\04\_Park\_Schools\_Accessibility\_2014-03-03.dwg  
 Plotted: 9/22/14 @ 11:34am By: chappin



NOT FOR CONSTRUCTION



**ERIKSSON  
ENGINEERING  
ASSOCIATES, LTD.**

148 COMMERCE DRIVE, SUITE A  
 BRYAN, ILLINOIS 62502  
 TEL: (618) 553-4804  
 FAX: (618) 553-4804  
 WWW: INFO@EEA-LTD.COM  
 PROFESSIONAL DESIGN FIRM  
 LICENSE NO. 154-000000  
 EXPIRATION: 04/30/2015

**LINCOLN ELEMENTARY SCHOOL  
 ORLAND PARK SCHOOL DISTRICT 97  
 1111 S. Grove Ave,  
 Oak Park, Illinois**

Reserved for Sheet:

Expiration Date:

No.	Date	Description

Design No:	05/28/14
Approved By:	Project No:

Sheet Title:

**CONCEPT  
SKETCH**

Sheet No:

**EX-3**

## Preliminary Engineer's Opinion of Probable Costs

### Whittier Elementary School

Oak Park, IL

September 15, 2014



Division A - Site Demolition					
Item	Description	Unit	Quantity	Unit Price	Extended Price
	Saw Cut (Full Depth)	LF	35	\$4.50	\$157.50
	Concrete Sidewalk Removal	SY	65	\$20.00	\$1,300.00
	Off Site Disposal	LS	1	\$500.00	\$500.00
	<b>Subtotal</b>				<b>\$1,957.50</b>

Division B - Site Pavement Improvements					
Item	Description	Unit	Quantity	Unit Price	Extended Price
	Concrete Sidewalk	SY	65	\$65.00	\$4,225.00
	ADA Tactile Warning Surface	LS	2	\$250.00	\$500.00
	<b>Subtotal</b>				<b>\$4,725.00</b>

Division C - Misc.					
Item	Description	Unit	Quantity	Unit Price	Extended Price
	Seeding & Landscape Restoration	LS	1	\$750.00	\$750.00
	Erosion Control Measures	LS	1	\$500.00	\$500.00
	<b>Subtotal</b>				<b>\$1,250.00</b>

	Total Costs from Above				\$7,932.50
	10% General Conditions				\$793.00
	25% Contingency				\$1,983.00
	Subtotal				\$10,708.50
	12% A/E Fees				\$1,285.02
	<b>Opinion of Total Construction Costs</b>				<b>\$11,994.00</b>

Note: This opinion of probable construction costs is based on quantities and unit prices assumed by the engineer based on data from previous construction projects, and will not necessarily reflect actual bid prices.





## Preliminary Engineer's Opinion of Probable Costs

### Longfellow Elementary School

Oak Park, IL

September 15, 2014



#### Division A - Site Demolition

Item	Description	Unit	Quantity	Unit Price	Extended Price
	Saw Cut (Full Depth)	LF	50	\$4.50	\$225.00
	Concrete Sidewalk Removal	SY	80	\$20.00	\$1,600.00
	Remove Existing Ramp Walls / Footings / Handrail	LF	42	\$100.00	\$4,200.00
	Off Site Disposal	LS	1	\$1,000.00	\$1,000.00
	<b>Subtotal</b>				<b>\$7,025.00</b>

#### Division B - Site Pavement Improvements

Item	Description	Unit	Quantity	Unit Price	Extended Price
	Concrete Sidewalk	SY	80	\$65.00	\$5,200.00
	ADA curb cuts at street	Allow	1	\$800.00	\$800.00
	Ramp Retaining Wall (Pour in Place)	LF	42	\$175.00	\$7,350.00
	Handrail - Free Standing	LF	44	\$175.00	\$7,700.00
	ADA Tactile Warning Surface	LS	1	\$250.00	\$250.00
	<b>Subtotal</b>				<b>\$21,300.00</b>

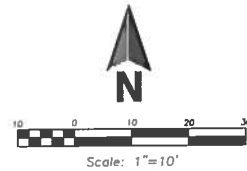
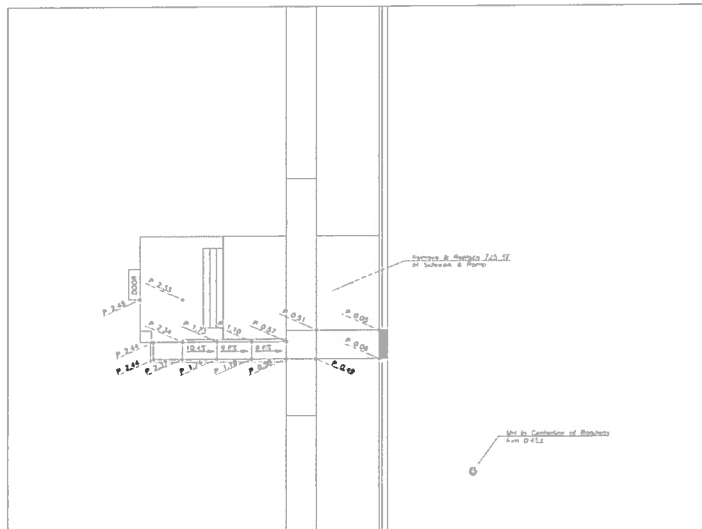
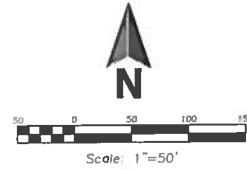
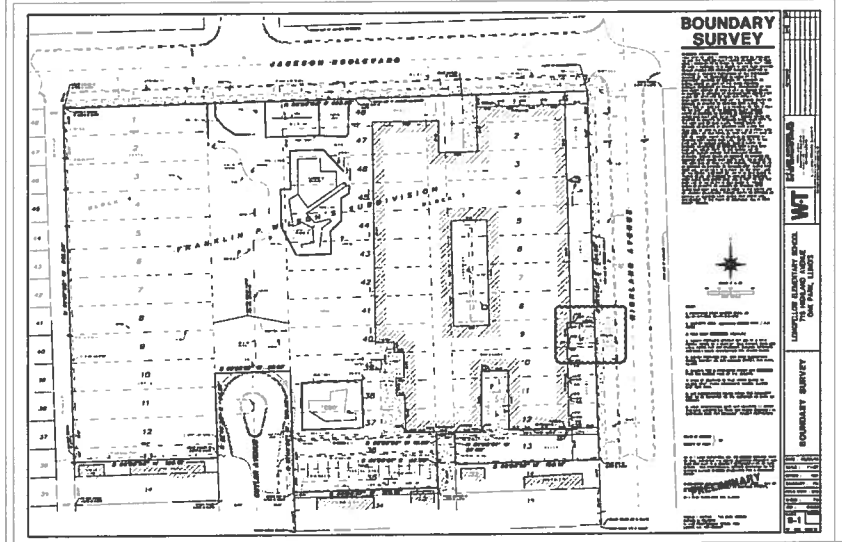
#### Division C - Misc.

Item	Description	Unit	Quantity	Unit Price	Extended Price
	Seeding & Landscape Restoration	LS	1	\$750.00	\$750.00
	Erosion Control Measures	LS	1	\$500.00	\$500.00
	<b>Subtotal</b>				<b>\$1,250.00</b>

	Total Costs from Above	\$29,575.00
	10% General Conditions	\$2,958.00
	15% Contingency	\$4,436.00
	Subtotal	\$36,969.00
	12% A/E Fees	\$4,436.28
	<b>Opinion of Total Construction Costs</b>	<b>\$41,405.00</b>

Note: This opinion of probable construction costs is based on quantities and unit prices assumed by the engineer based on data from previous construction projects, and will not necessarily reflect actual bid prices.

ECN - n:\plan\Oak Park School Accessibility\Drawings\Oak Park School Accessibility\_2014-03-03.dwg  
 Plotted: 9/22/14 @ 11:35am By: chappin



**ERIKSSON  
ENGINEERING  
ASSOCIATES, LTD.**

148 DORRANCE DRIVE, SUITE A  
 GRAYSLAKE, ILLINOIS 60030  
 Phone: (847) 533-8804  
 Fax: (847) 533-8864  
 Email: INFO@EEA-LTD.COM  
 Project/Contract, Design Firm  
 License No. 184-023830  
 Expires: 04/30/2018

**LONGFELLOW ELEMENTARY SCHOOL  
 ORLAND PARK SCHOOL DISTRICT 97  
 715 N. Highland Ave.,  
 Oak Park, Illinois**

Reserved for Best:

Expiration Date:

No.	Date	Description

© Eriksson Engineering Associates, Ltd. and  
 ERIKSSON ENGINEERING ASSOCIATES, LTD.  
 Design By: Date: 05/28/14  
 Approval By: Project No.

Sheet Title:

**CONCEPT  
SKETCH**

Sheet No:

**EX-4**

**NOT FOR CONSTRUCTION**