

An aerial photograph of a city skyline, likely Chicago, with a dark, semi-transparent rectangular overlay in the center. The overlay contains the main title and subtitle. Several white location pin icons are scattered across the image, some overlapping the dark overlay and others on the city background. The sky is overcast with grey clouds.

CRISGO ECHO BADGE SOLUTION

Powered by LoRaWAN

FAST, RELIABLE & DISCREET EMERGENCY COMMUNICATION

Simple Clicks to Activate Alerts

Precision Location Tracking

Instant Multi-Channel Notifications

TrueSignal™ Mechanism – Minimizing False Alarms

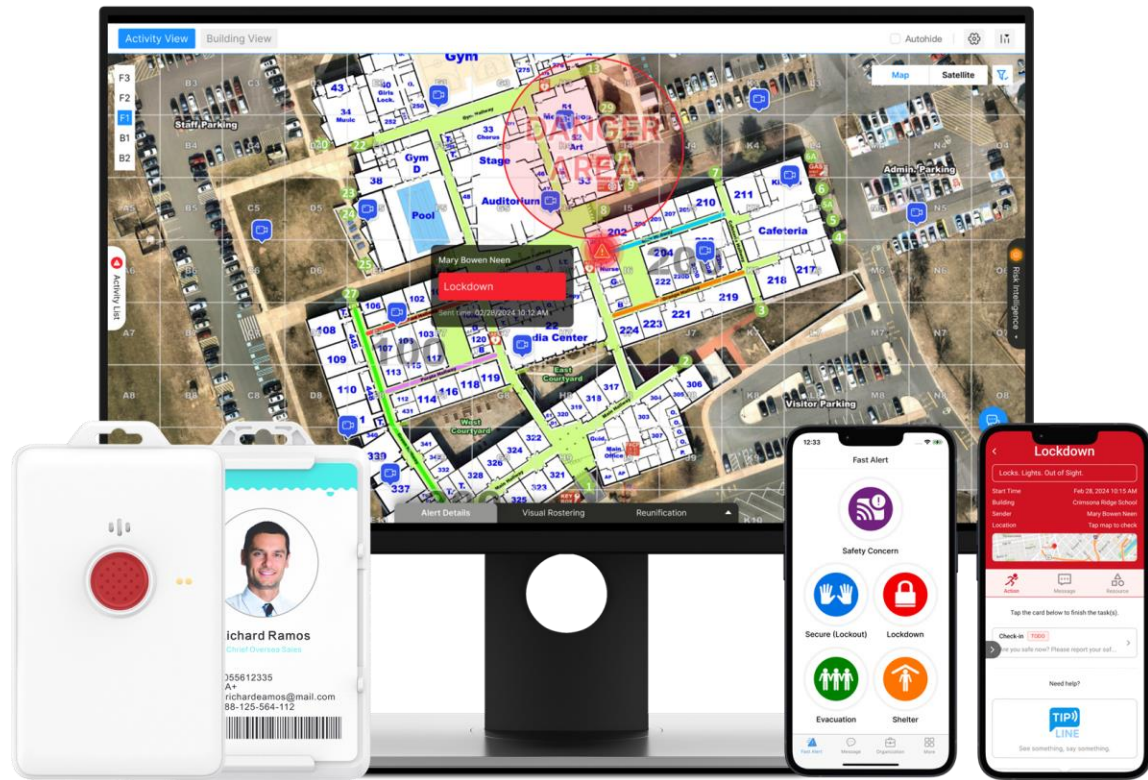
App-Free Student Accountability & Communication



3-clicks for Staff Assist; 7-clicks for Lockdown
Alert sender receives SMS/Email confirmation



SMART BADGE – WEARABLE PANIC BUTTON WITH NOTIFICATION



Empower Schools to Meet Alyssa's Law Compliance

ECHO Multi-functional Smart Badge

Empowers staff to both trigger panic alerts and receive them through sound and vibration, ensuring rapid awareness and response.

Advanced, Secure Network for Critical Events

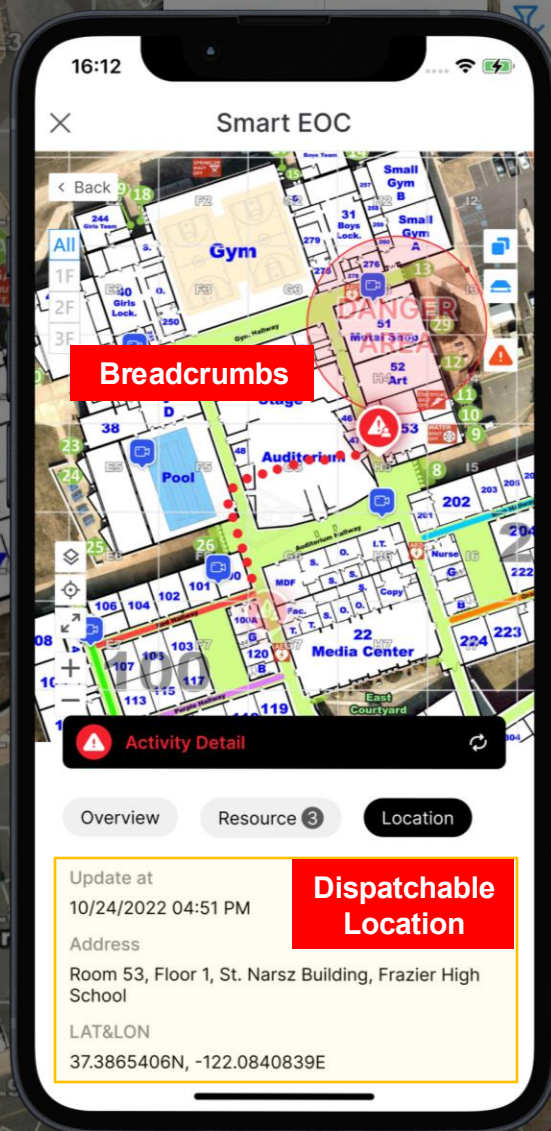
Built on a secure, interference-resistant LoRaWAN local network - with optional FirstNet backbone.

Affordable Safety at Scale

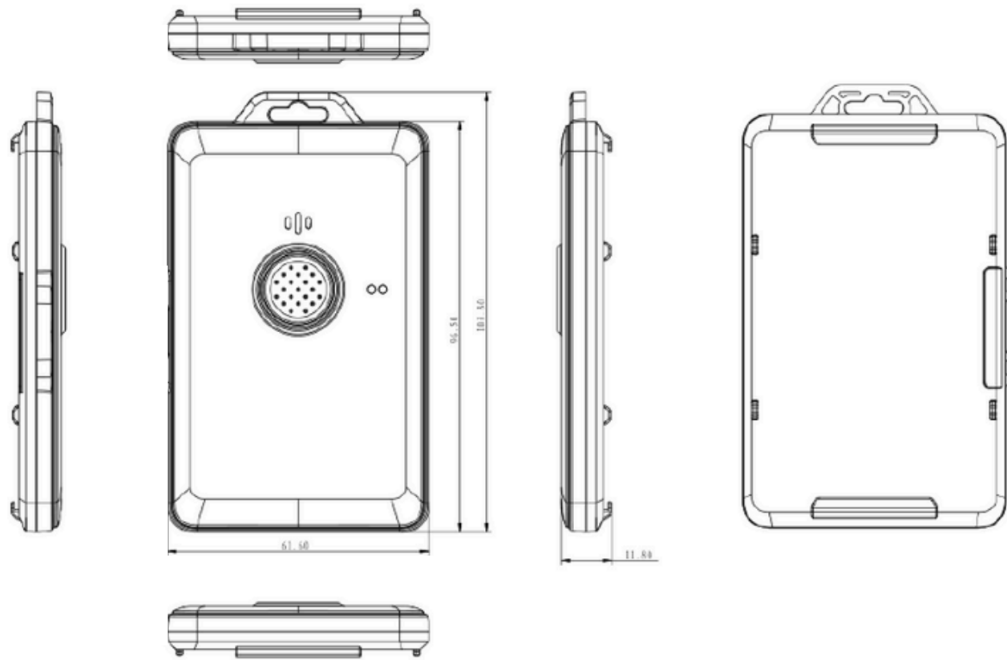
Designed to leverage your existing school network infrastructure, offers a cost-effective safety solution accessible to every school.

HOW IT WORKS

- Leverage existing WiFi Access Points.
- No Hardware required.
- CrisisGo ATLS scanning nearby WiFi APs and provide location with 9ft accuracy.
- ATLS available for ECHO Badge, Smartphones, Smartwatches, Tablets



ECHO BADGE SPECIFICATIONS



Features	Description
LoRaWan	LoRaWAN V1.0.3, EU868/AU915/US915/AS923/IN865/KR920/EU433/CN470/CN779/RU8 64/AS923-1/AS923-2/AS923-3/AS923-4
BLE Wireless Specification	Bluetooth 5.0, BLE Broadcast Distance - up to 50m, BLE Scan Distance (1M PHY) - 150M, BLE Scan Distance (Coded PHY) - up to 300m
Weight, Dimensions	Around 70g, 103.3*68.4*11.8mm(Includes lugs)
Power Consumption	1500mAH Rechargeable battery
IP Rating	IP67
Certifications	CE/FCC/Reach/RoHS

CRISISGO ECHO BADGE SYSTEM – SECURE NETWORK, EASY DEPLOYMENT, COST SAVING

Advanced IoT Network for Reliable Coverage

The LoRaWAN network ensures campus-wide coverage with stable, penetrating signals and robust encryption, resisting attacks and disruptions in open environments.

Cost-Effective Infrastructure

The CrisisGo ECHO badge system cuts hardware, deployment, and maintenance costs by leveraging schools' existing network infrastructure.

Effortless Deployment & Scalable Maintenance

LoRaWAN covers large campuses with few gateways. BLE beacons enable indoor tracking, reusing existing WiFi BLE modules to avoid extra devices/maintenance.

Test & Drill Modes for Safe, Effective Practice

Drill Mode lets schools conduct full-scale drills on real devices without alerting 911, while Test Mode enables staff to practice with panic buttons privately.

Two-Tier Network Monitoring for Proactive Safety

CrisisGo's IoT Dashboard offers real-time network health views and instant alerts, with 24/7 monitoring via the Operations System for school protection.



ALERT EVERYWHERE

