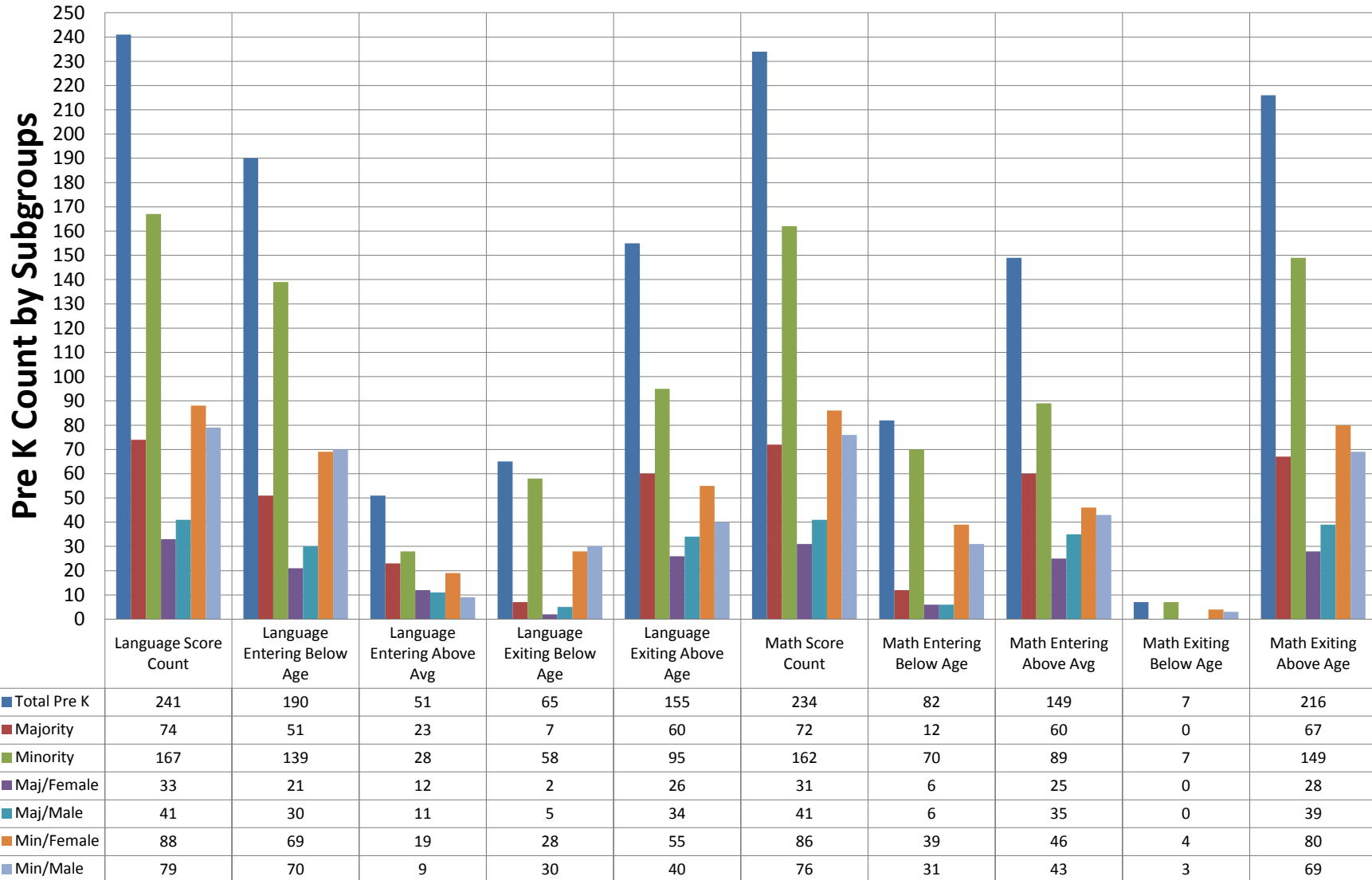
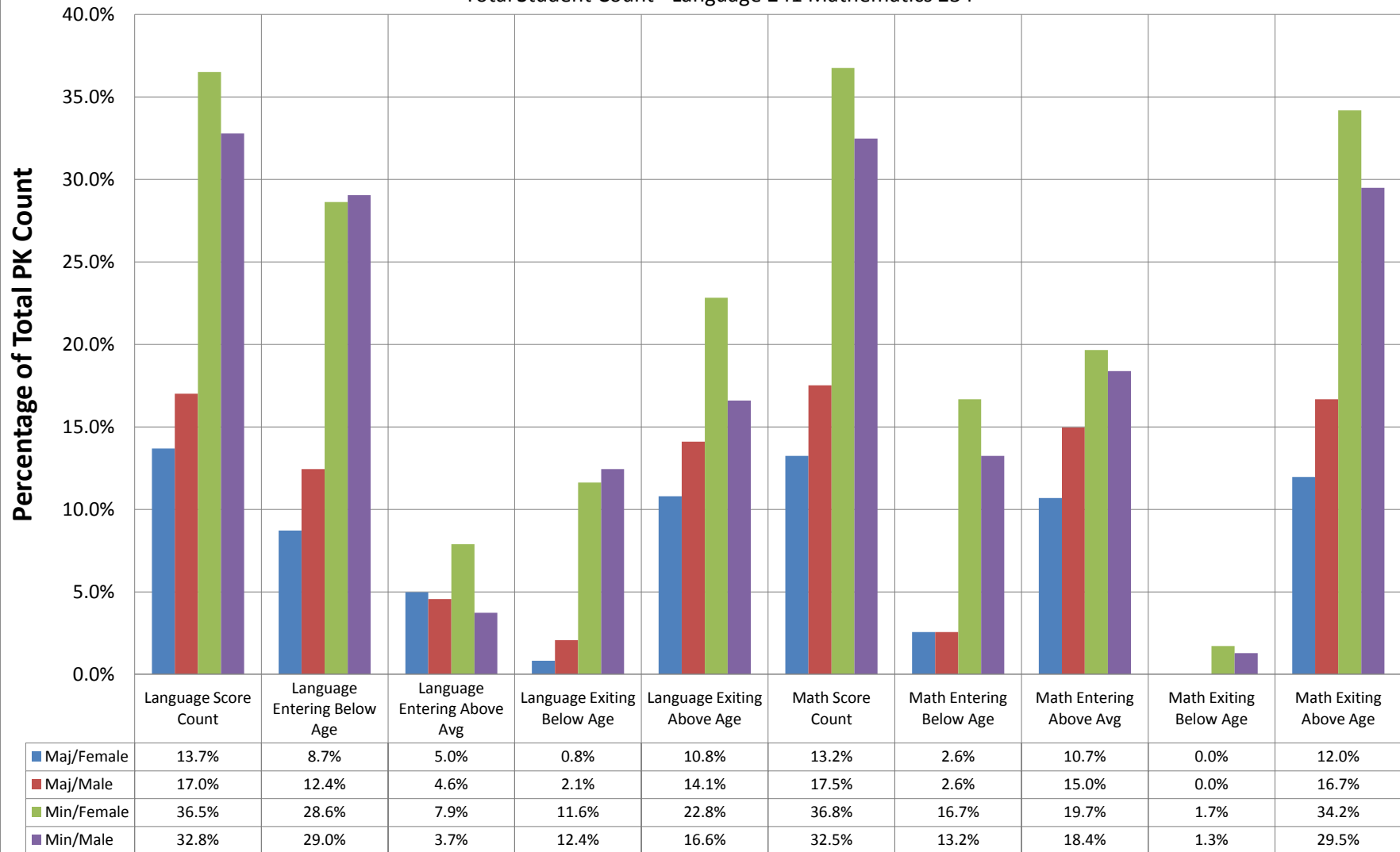


Language Pre/Post (EPSF) and Mathematics Pre/Post (CA) Test Results for Pre K Students Tested in 2011-2012



Language Pre/Post (EPSF) and Mathematics Pre/Post (CA) Test Results for Pre K Students Tested in 2011-2012

Total Student Count - Language 241 Mathematics 234



Language Pre/Post (EPSF) and Mathematics Pre/Post (CA) Test Results for Pre K Students Tested in 2011-2012 by Total of Each Subgroup

